

6'-0" x 9'-0" x 10'-0" LONG TUNNEL INTERCEPT MANHOLE

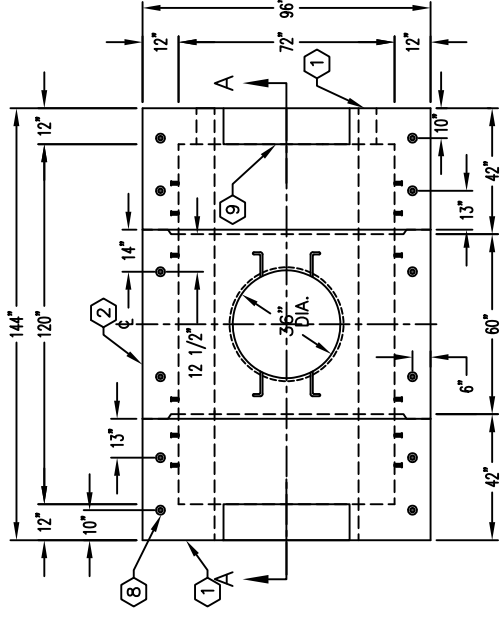
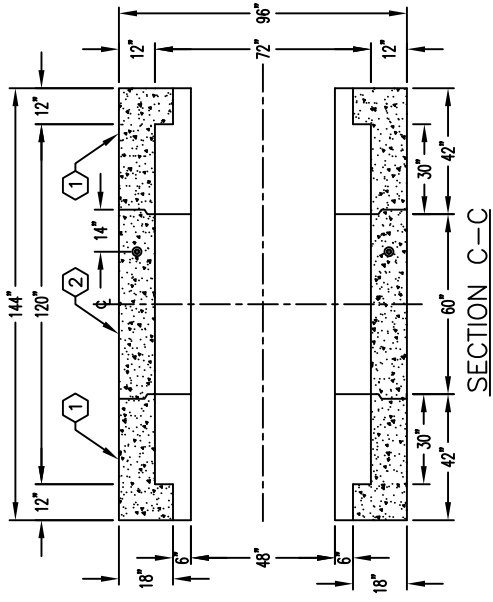
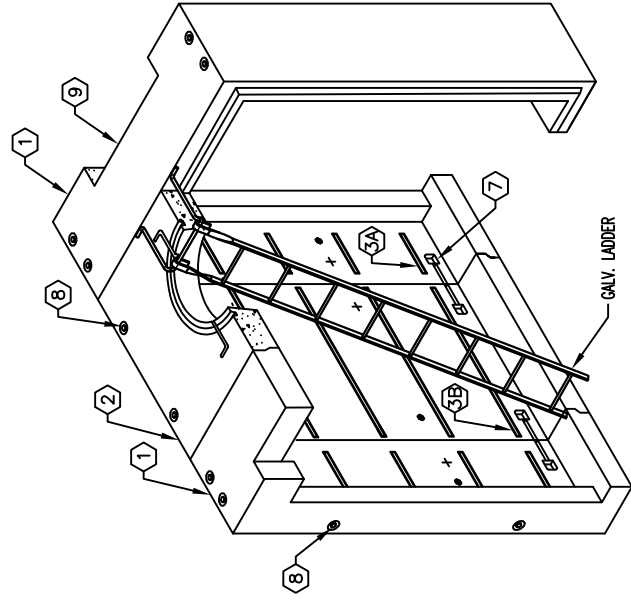
MATERIAL LIST		
ITEM PART NO.	DESCRIPTION	WEIGHT/MOUNT
1	TV69X-E30-INT-LA-14 (2) 30" END SECTION INTERCEPT	16,650 lbs
2	TV69X-C60-INT-LA-14 60" CENTER SECTION WITH OPENING INTERCEPT	21,700 lbs
3A	55-21-022 1 5/8" x 1 5/8" "UNISTRUT" x 22" CAST-IN	(10) CORE
3B	55-21-057 1 5/8" x 1 5/8" "UNISTRUT" x 57" CAST-IN	(10) CORE
4	FOR DOWEL LOCATIONS SEE REF DWG DWL-69X-TV10-INT-LA-14	
5	55-10-215 1/4" DIA. x 1-11/16" THREADED BRASS GROUND INSERT WELD TO REBAR "GRD" TO BE STENCILED IN RED LETTERS	(2) CORE
6	55-10-210 INSERT, 1/4"x 1 1/2" P-15T CLOSED FOR BONDING RIBBON	(2) CORE
7	BRK-TV BOLT UP CASTING	(2) CORE
8	55-20-813 8 TON x 13 3/8" GALV. DOGBONE ANCHOR FOR HANDLING	(4) CORE
9	SLOT 42" WD x 15" HT SLOT-EA. END FOR POURING CONC. IN FIELD	(4) SHELL & SURFACE (6) SHELL (1) SURFACE

NOTES:
THE FOLLOWING MATERIALS ARE TO BE SHIPPED WITH THE MANHOLE.

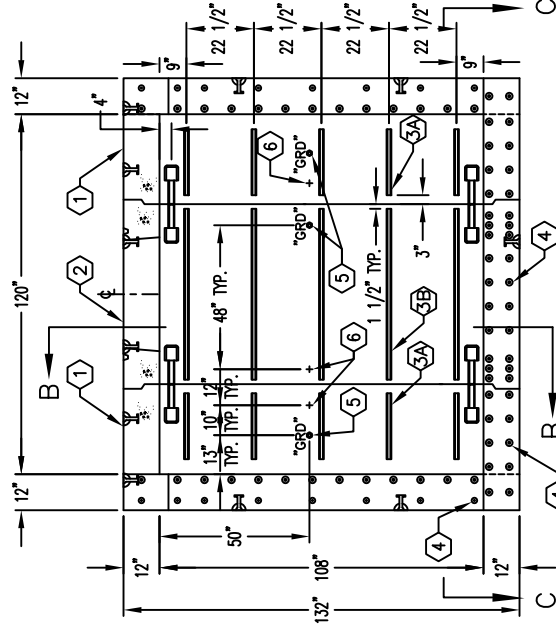
- STANDARDS, AASHTO LRFD BRIDGE DESIGN SPECIFICATIONS, 6TH EDITION, WITH 2014 CALTRANS AMENDMENTS, CITY OF LOS ANGELES BUREAU OF ENGINEERING STANDARD PLAN S-601, LATEST, MANUAL PART H, ASTM C-857.
- MATERIAL CONCRETE, F_c=5,500 PSI, MIX 17 OR 30 INCLUDE ELY ASH AND DCI. REINFORCEMENT PER ASTM A-706, F_y=60,000 PSI.
- LOADS, VERTICAL LIVE LOAD: AASHTO HL-93. LIVE LOAD SURCHARGE: LA BOE PART H, FIGURE H 374.2A, MINIMUM 80 PSF (TO BOTTOM OF VAULT). SOIL LATERAL LOADS: 40 PCF (DRY), 81 PCF (SATURATED), SATURATED SOIL CONDITIONS 3'-0" BELOW GRADE. SOIL BEARING CAPACITY = 1500 PSF. DESIGN SOIL DENSITY IS 120 PCF.
- LOADS NOT INCLUDED, DESIGN DOES NOT INCLUDE COOPER E-80 RAILROAD LOADS OR LATERAL OR SURCHARGE LOADS THAT ARE PRODUCED BY FOOTING OR FOUNDATIONS ADJACENT TO THE STRUCTURE. THIS SUBSTRUCTURE SHALL BE KEPT AT LEAST IN A 1:1 RATIO AWAY FROM ALL FOOTINGS AND FOUNDATIONS, UNLESS THE ENGINEER OF RECORD APPROVES IN WRITING.
- INSTALLATION LIMITS, VAULT SHALL HAVE A MINIMUM COVER OF 1'-6" AND A MAXIMUM COVER OF 5'-0".
- EACH CONCRETE SECTION SHALL BE MARKED ON THE INSIDE & OUTSIDE WITH "JENSEN PRECAST-FONTANA", AT&T OIN# AND THE DATE OF POUR.
- EACH CONCRETE SECTION SHALL HAVE CAST-IN ON THE INSIDE "JENSEN", AND THE YEAR.
- ALL WALLS AND CEILING SHALL BE PAINTED WHITE.
- EACH PIECE TO BE STENCILED WITH ITS PART NO.
- INSTALLATION: VAULT TO BE PLACED ON A MIN. 6" BASE OF CRUSHER RUN FOR EASE OF INSTALLATION AND EVEN LOAD DISTRIBUTION. BASE MATERIAL IN ACCORDANCE WITH SECTION 200-2 OF THE SSPWC (GREEN BOOK).
- ADDITIONAL SUBMITTAL, PERMIT AND CONSTRUCTION PLAN REVIEW WILL BE REQUIRED FOR EACH PROJECT LOCATION. SUBMIT TO CITY ENGINEER FOR APPROVAL PRIOR TO START OF ANY CONSTRUCTION.
- ALL INSTALLATIONS SHALL COMPLY WITH ALL OTHER LOCAL GOVERNING CODES AND REGULATIONS INCLUDING CALIFORNIA PUBLIC UTILITIES COMMISSION REGULATIONS.

RIGGING EQUALIZER REQUIRED TO EQUALIZE LOAD TO (4) FOUR LIFTING POINTS WITH 60° MIN. SLING ANGLE, MEASURED FROM HORIZONTAL.

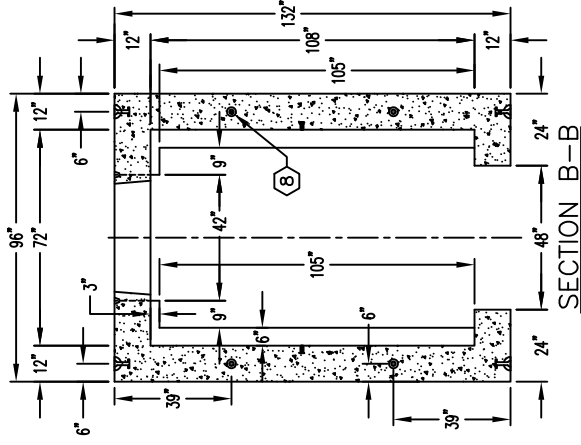
MINIMUM EXCAVATION SIZE:
9'-0" x 17'-0" x DEPTH REQD.



PLAN VIEW



SECTION A-A



SECTION B-B

DESCRIPTION	AT&T OIN#
69x2-6 MODULAR MANHOLE INTERCEPT END CAP W/RACKING	100061969-LA
69x2-6 MODULAR MANHOLE INTERCEPT END CAP W/RACKING	100061970-LA
69x5 MODULAR MANHOLE INTERCEPT CENTER W/ACCESS & RACKING	100061971-LA

DATE	DRAWN BY	ORIGIN:	SALES REP.	CHECKED BY	
01-03-18	DF	K69X-TV10-INT-LA-14	P.E.	-	
#	DATE	DESCRIPTION	BY	CHK	SHEET
-	-	-	-	-	- OF -