

# 6'-0" x 9'-0" x 10'-0" LONG FLAT WALL TUNNEL MANHOLE

MATERIAL LIST	
ITEM PART NO.	DESCRIPTION
1	TV69XE30-LA-14COLA (2) 30" END SECTION
2	TV69XC60-LA-14COLA 60" CENTER SECTION WITH OPENING
3	KNOCK OUT 13" x 12" DIA. SUMP x 4 1/2" DEEP
4	55-35-03 7/8" DIA x 3 3/8" GALV. PULL IRON
5	50-30-43 4" DIA. CONDUIT CENTER SLEEVE 4.35" x 4.5" I.D. STEPPED
6A	55-21-015 1 5/8" x 1 5/8" UNISTRUT x 15"
6B	55-21-022 1 5/8" x 1 5/8" UNISTRUT x 22"
6C	55-21-057 1 5/8" x 1 5/8" UNISTRUT x 57"
7	BRK-TV BOLT UP CASTINGS
8	55-10-215 1/4" THREADED BRONZE GROUND INSERT WELD TO REBAR "GRD" TO BE STENCILED IN RED LETTERS
9	55-10-210 INSERT, 1/4" x 1 1/2" P-15T CLOSED FOR BONDING RIBBON
10	55-20-813 8 TON x 13 3/8" GALV. DOGBONE ANCHOR FOR HANDLING

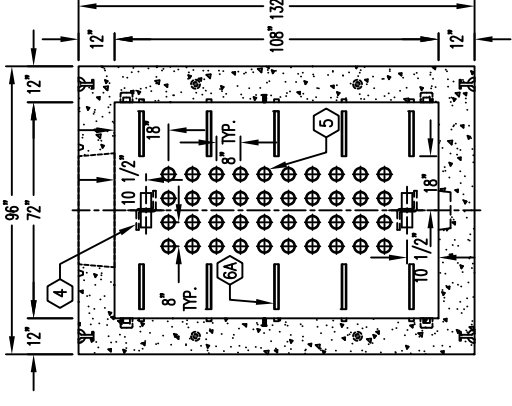
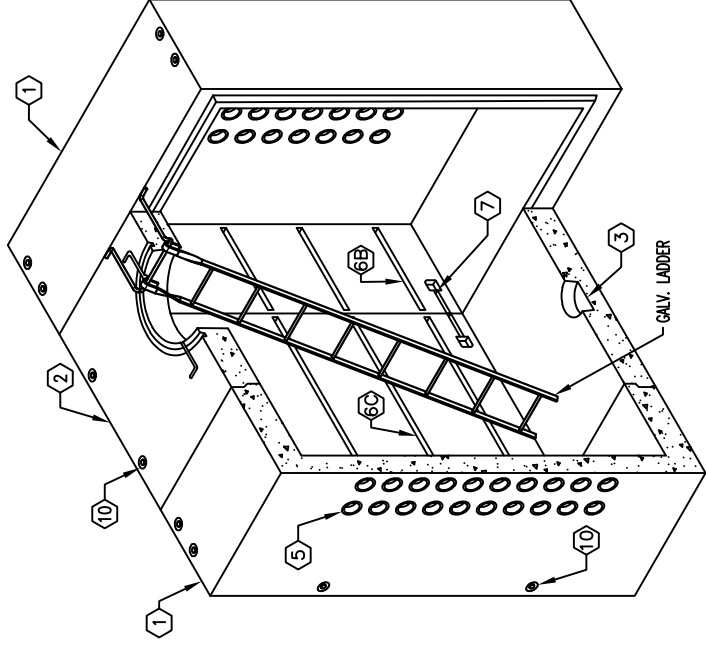
### NOTES:

- STANDARDS, AASHTO LRFD BRIDGE DESIGN SPECIFICATIONS, 6TH EDITION, WITH 2010 CALTRANS AMENDMENTS, CITY OF LOS ANGELES BUREAU OF ENGINEERING STANDARD PLAN S-601, LATEST, MANUAL PART H, ASTM C-857. STRUCTURAL CALCS. #34109.
- MATERIAL CONCRETE, F<sub>c</sub>=5,500 PSI, MIX 17 OR 30 INCLUDES FLY ASH AND DCI REINFORCEMENT PER ASTM A-706, F<sub>y</sub>=60,000 PSI.
- LOADS, VERTICAL LIVE LOAD: AASHTO HL-93. LIVE LOAD SURCHARGE: LA BOE PART H, FIGURE H 374.2A, MINIMUM 80 PSF (TO BOTTOM OF VAULT). SOIL LATERAL LOADS: 40 PCF (DRY), 81 PCF (SATURATED), SATURATED SOIL CONDITIONS 3'-0" BELOW GRADE. SOIL BEARING CAPACITY = 1500 PSF. DESIGN SOIL DENSITY IS 120 PCF.
- LOADS NOT INCLUDED, DESIGN DOES NOT INCLUDE COOPER E-80 RAILROAD LOADS OR LATERAL OR SURCHARGE LOADS THAT ARE PRODUCED BY FOOTING OR FOUNDATIONS ADJACENT TO THE STRUCTURE. THIS SUBSTRUCTURE SHALL BE KEPT AT LEAST IN A 1:1 RATIO AWAY FROM ALL FOOTINGS AND FOUNDATIONS, UNLESS THE ENGINEER OF RECORD APPROVES IN WRITING.
- INSTALLATION LIMITS, VAULT SHALL HAVE A MINIMUM COVER OF 1'-6" AND A MAXIMUM COVER OF 5'-0".
- EACH CONCRETE SECTION SHALL BE MARKED ON THE INSIDE & OUTSIDE WITH "JENSEN PRECAST-FONTANA", AT&T OIN# AND THE DATE OF POUR.
- EACH CONCRETE SECTION SHALL HAVE CAST-IN ON THE INSIDE "JENSEN", AND THE YEAR.
- EACH PIECE TO BE STENCILED WITH ITS PART NO.
- ALL WALLS AND CEILING SHALL BE PAINTED WHITE.
- INSTALLATION, VAULT TO BE PLACED ON A MIN. 6" BASE OF CRUSHER RUN FOR EASE OF INSTALLATION AND EVEN LOAD DISTRIBUTION. BASE MATERIAL IN ACCORDANCE WITH SECTION 200-2 OF THE SSPWC (GREEN BOOK).
- ADDITIONAL SUBMITTAL, PERMIT AND CONSTRUCTION PLAN REVIEW WILL BE REQUIRED FOR EACH PROJECT LOCATION. SUBMIT TO CITY ENGINEER FOR APPROVAL PRIOR TO START OF ANY CONSTRUCTION.
- ALL INSTALLATIONS SHALL COMPLY WITH ALL OTHER LOCAL GOVERNING CODES AND REGULATIONS INCLUDING CALIFORNIA PUBLIC UTILITIES COMMISSION REGULATIONS.

THE FOLLOWING MATERIALS ARE TO BE SHIPPED WITH THE MANHOLE.

- 12B31 LADDER STEPS, OR EQUAL
- 1-3600 LADDER 10", OR EQUAL
- SEE CABLE RACKING DWG'S 69-E24.30-CR14COLA & 69-R60-CR14COLA
- SEE GRADE RING DWG K36X-MN12-LA-09COLA

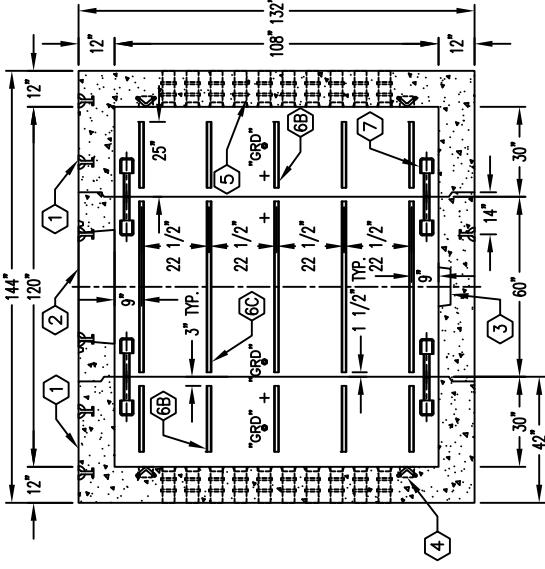
MINIMUM EXCAVATION SIZE:  
9'-0" x 13'-0" x DEPTH REQ'D.



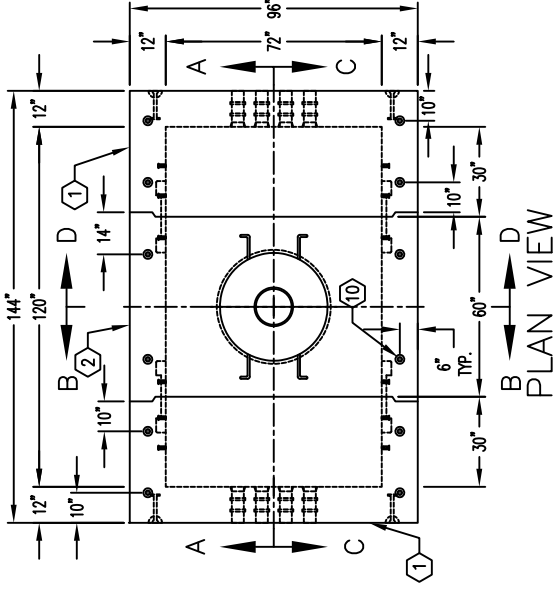
SECTION B-B

DESCRIPTION	AT&T OIN#
6x9x2-6 MODULAR MANHOLE	XXXXXXXXXX
END CAP W/RACKING	100061966-LA
6x9x2-6 MODULAR MANHOLE	100061966-LA
END CAP W/RACKING	100061967-LA
6x9x5 MODULAR MANHOLE	100061967-LA
CENTER W/ACCESS & RACKING	

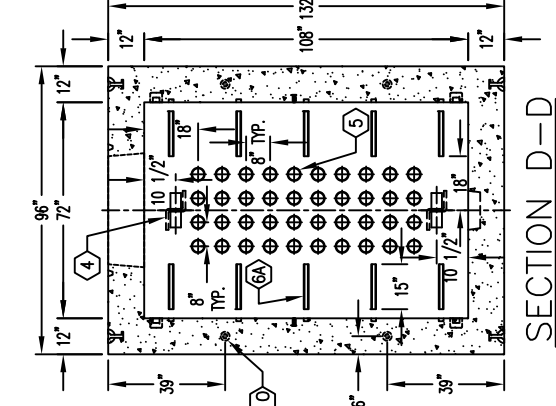
RIGGING EQUALIZER REQUIRED TO EQUALIZE LOAD TO (4) FOUR LIFTING POINTS WITH 60° MIN. SLING ANGLE, MEASURED FROM HORIZONTAL.



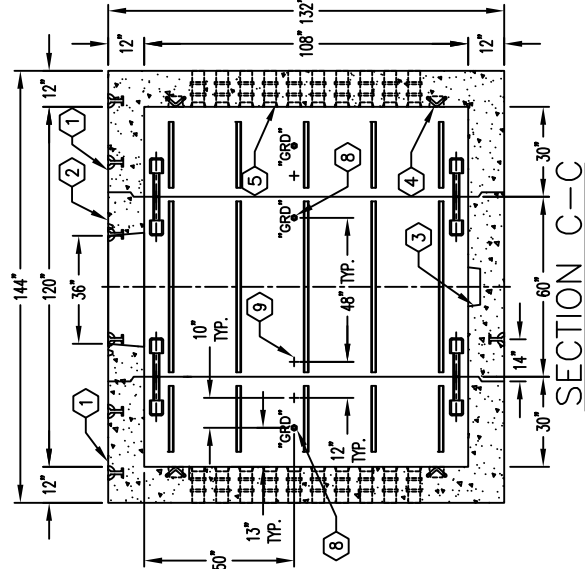
SECTION A-A



PLAN VIEW



SECTION D-D



SECTION C-C

DATE	DRAWN BY	ORIGIN:	SALES REP.	CHECKED BY	
01-03-18	DF	K69X-TV10-LA-14	P.E.	-	
#	DATE	DESCRIPTION	BY	CHK	SHEET
-	-	REVISION HISTORY	-	-	- OF -

STOCKPILE - JENSEN PRECAST  
CITY OF LOS ANGELES INSPECTION  
REQUIRED WO# C0034604

**JENSEN PRECAST**  
14221 SAN BERNARDINO AVE.  
FONTANA, CA 92335

K69X-TV10-LA-14COLA  
PER AT&T SPECS.