

6'-0" x 9'-0" TUNNEL INTERCEPT MANHOLE x 20'-0" LONG

ITEM PART NO.	DESCRIPTION	CAGE NO./ LOCATE	WEIGHT/ MOUNT
1 TV69X-E30-INT-LA-14	(2) 30" END SECTION INTERCEPT	CG-69X-E30-INT-LA-14	16,650 lbs
2 TV69X-C60-INT-LA-14	60" CENTER SECTION WITH OPENING INTERCEPT	CG-69X-C60-INT-LA-14	21,700 lbs
3 TV69X-R60-INT-LA-14	60" EXTENSION SECTION INTERCEPT	CG-69X-R60-INT-LA-14	22,550 lbs
4 TV69X-R60-INT-LA-14O	60" EXTENSION SECTION WITH OPENING INTERCEPT	CG-69X-R60-INT-LA-14O	21,700 lbs
5A 55-21-022	1 5/8" x 1 5/8" "UNISTRUT" x 22" CAST-IN	END SECTION	(10) CORE
5B 55-21-057	1 5/8" x 1 5/8" "UNISTRUT" x 57" CAST-IN	CENT. & EXT. w/OPNG SECT EXTENSION SECTION	(10) CORE
6	FOR DOWEL LOCATIONS SEE REF DWG	DWL-69X-TV20-INT-LA-14	(10) CORE
7 55-10-215	1/4" DIA. x 1-11/16" THREADED BRASS GROUND INSERT WELD TO REBAR "GRD" TO BE STENCILED IN RED LETTERS	CENT. & EXT. SECTION END SECTION	(2) CORE (2) CORE
8 55-10-210	INSERT, 1/4" x 1 1/2" P-15T CLOSED FOR BONDING RIBBON	CENT. & EXT. SECTION END SECTION	(2) CORE (2) CORE
9 BRK-TV	BOLTUP CASTING	END SECTION	(4) CORE
10 55-20-813	8 TON x 13 3/8" GALV. DOGBONE ANCHOR FOR HANDLING	CENT. & EXT. SECTION END SECTION	(8) CORE (4) SHELL & SURFACE (6) SHELL
11 SLOT	42" WD x 15" HT SLOT-EA. END FOR POURING CONC. IN FIELD	END SECTION	(2) SURFACE

NOTES:

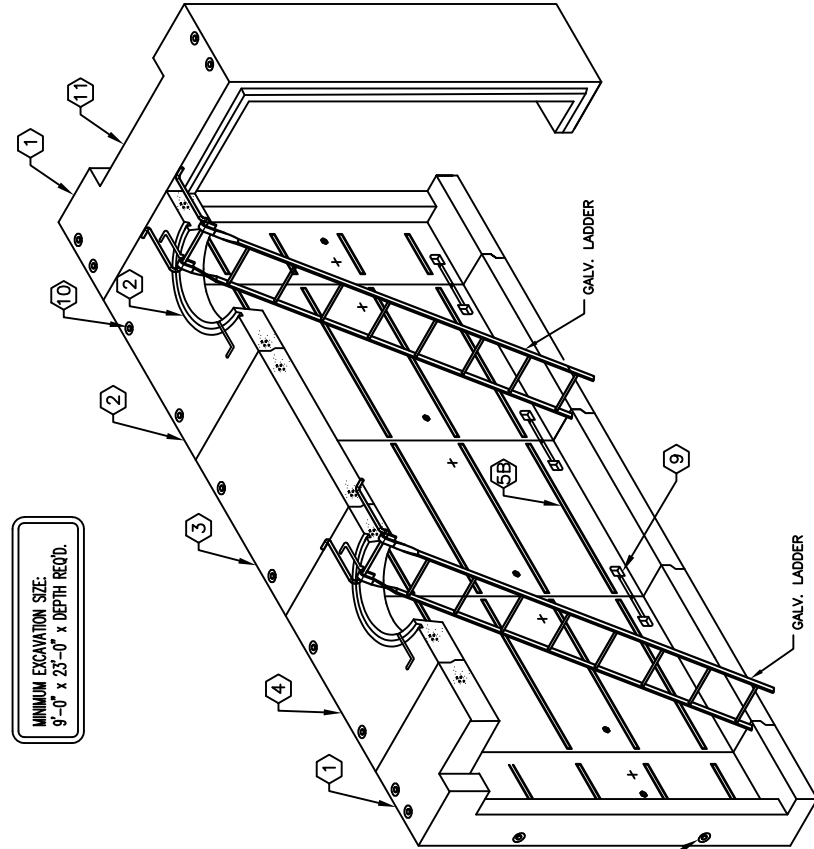
- STANDARDS. AASHTO LRFD BRIDGE DESIGN SPECIFICATIONS, 6TH EDITION, WITH 2014 CALTRANS AMENDMENTS, CITY OF LOS ANGELES BUREAU OF ENGINEERING STANDARD PLAN S-601, LATEST, MANUAL PART H, ASTM C-857. STRUCTURAL CALCS. #34104A.
- MATERIAL. CONCRETE, F_c=5,500 PSI. MIX 17 OR 30 INCLUDE FLY ASH AND DCI. REINFORCEMENT PER ASTM A-706, F_y=60,000 PSI.
- LOADS. VERTICAL LIVE LOAD: AASHTO HL-93. LIVE LOAD SURCHARGE: LA BOE PART H, FIGURE H 374.2A, MINIMUM 80 PSF (TO BOTTOM OF VAULT). SOIL LATERAL LOADS: 40 PCF (DRY), 81 PCF (SATURATED), SATURATED SOIL CONDITIONS 3'-0" BELOW GRADE. SOIL BEARING CAPACITY = 1500 PSF. DESIGN SOIL DENSITY IS 120 PCF.
- LOADS NOT INCLUDED. DESIGN DOES NOT INCLUDE COOPER E-80 RAILROAD LOADS OR LATERAL OR SURCHARGE LOADS THAT ARE PRODUCED BY FOOTING OR FOUNDATIONS ADJACENT TO THE STRUCTURE. THIS SUBSTRUCTURE SHALL BE KEPT AT LEAST IN A 1:1 RATIO AWAY FROM ALL FOOTINGS AND FOUNDATIONS, UNLESS THE ENGINEER OF RECORD APPROVES IN WRITING.
- INSTALLATION LIMITS. VAULT SHALL HAVE A MINIMUM COVER OF 1'-6" AND A MAXIMUM COVER OF 5'-0".
- EACH CONCRETE SECTION SHALL BE MARKED ON THE INSIDE & OUTSIDE WITH "JENSEN PRECAST-FONTANA", AT&T OIN# AND THE DATE OF POUR.
- EACH CONCRETE SECTION SHALL HAVE CAST-IN ON THE INSIDE "JENSEN", AND THE YEAR.
- ALL WALLS AND CEILING SHALL BE PAINTED WHITE.
- EACH PIECE TO BE STENCILED WITH ITS PART NO.
- INSTALLATION. VAULT TO BE PLACED ON A MIN. 6" BASE OF CRUSHER RUN FOR EASE OF INSTALLATION AND EVEN LOAD DISTRIBUTION. BASE MATERIAL IN ACCORDANCE WITH SECTION 200-2 OF THE SSPWC (GREEN BOOK).
- ADDITIONAL SUBMITTAL. PERMIT AND CONSTRUCTION PLAN REVIEW WILL BE REQUIRED FOR EACH PROJECT LOCATION. SUBMIT TO CITY ENGINEER FOR APPROVAL PRIOR TO START OF ANY CONSTRUCTION.
- ALL INSTALLATIONS SHALL COMPLY WITH ALL OTHER LOCAL GOVERNING CODES AND REGULATIONS INCLUDING CALIFORNIA PUBLIC UTILITIES COMMISSION REGULATIONS.

THE FOLLOWING MATERIALS ARE TO BE SHIPPED WITH THE MANHOLE.

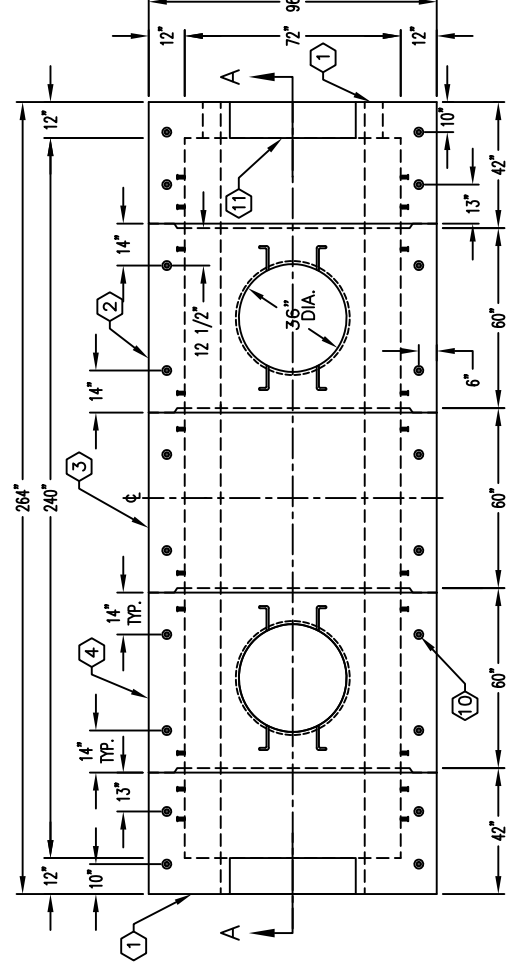
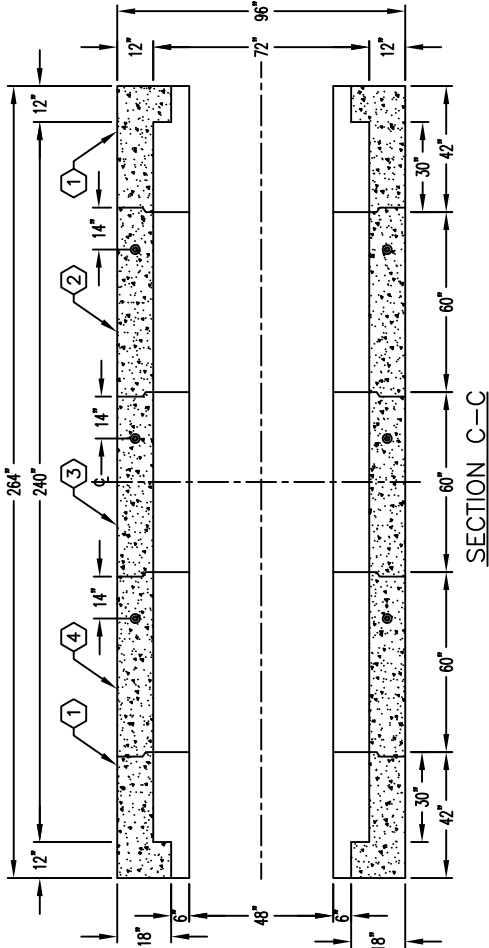
- 12B31 LADDER STEPS, OR EQUAL
- 1-3600 LADDER 10", OR EQUAL
- 4" DIA. CONTERM
- SEE CABLE RACKING DWG'S 69-E24,30-CR14 & 69-R60-CR14
- SEE GRADE RING DWG K36X-MN12-LA-09
- SEE INTERCEPT PACKAGE DWG KPKINT-69X-TV20-LA-14.
- 7/8" GALV. PULL IRON (4 REQ'D.), CONTRACTOR TO CAST-IN PLACE @ END WALLS, 12" FROM TOP & BOTTOM.

RIGGING EQUALIZER REQUIRED TO EQUALIZE LOAD TO (4) FOUR LIFTING POINTS WITH 60° MIN. SLING ANGLE, MEASURED FROM HORIZONTAL.

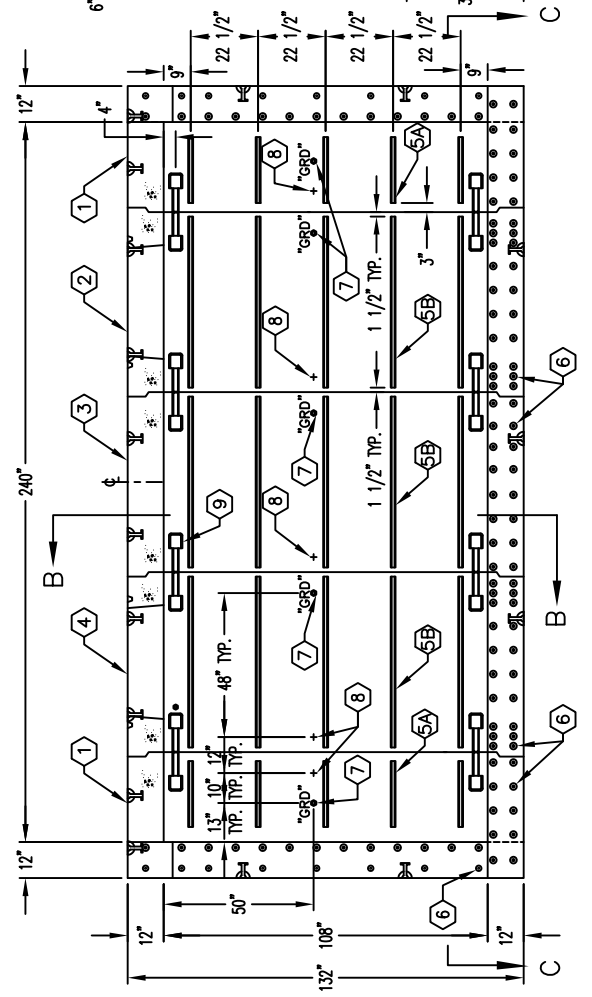
MINIMUM EXCAVATION SIZE:
9'-0" x 23'-0" x DEPTH REQ'D.



DESCRIPTION	AT&T OIN#
6692-6 MODULAR MANHOLE INTERCEPT END CAP W/RACKING	100061969-LA
6692-6 MODULAR MANHOLE INTERCEPT END CAP W/RACKING	100061970-LA
6695 MODULAR MANHOLE INTERCEPT CENTER W/ACCESS & RACKING	100061971-LA
6695 MODULAR MANHOLE INTERCEPT CENTER W/O ACCESS & W/RACKING	100061972-LA



PLAN VIEW



DATE	DRAWN BY	CHECKED BY
-	-	-

#	DATE	DESCRIPTION	BY	CHK
D	01-04-18	REMOVED ALL OTHER LENGTHS	DF	-
C	10-18-17	REV NOTES, TITLE, B.O.M. FOR TWO	EO	SMG



K69X-TV20-INT-LA-14

PER AT&T SPECS.



K69X-TV20-INT-LA-14

PER AT&T SPECS.