

8'-0" x 10'-0" TRANSFORMER PAD W/6'-0" x 8'-0" ENCLOSURE x 3'-6" DEEP

MATERIAL LIST- K810-SB42-N-12

ITEM PART NO.	DESCRIPTION	QTY	WEIGHT/ MOUNT
1 SB88-B42-N-12	42" BOTTOM SECTION	1	9,725 lbs
2 PD96-120-16-12	6" TRANSFORMER PAD	1	4,750 lbs
3 SC-30-18-PAGV	(1) PECE PARKWAY DIAMOND PLATE COVER GALV AFTER BEAD WELDING "LADWP-E" (1" HT.)	1	129 lbs
4 20-10-413	(4) 1/2" x 1-1/2" PENTA HEAD BOLTS (NON-CORROSIVE)	4	
5 55-30-52	5" DIA. TERMINATOR WITH MEMBRANE	1	
6 55-10-416	1/2" P-35-T OPEN BTM INSERT WITH CLEAN-OUT HOLE	1	
7 55-10-830	1" GALVANIZED COIL THREAD INSERT	1	
8 55-20-203	2 TON x 3-3/8" GALV. RISS FOR HANDLING	1	
9 55-21-092	1-5/8" x 1-5/8" x 12 GAUGE STRUT x 92" LONG	1	
10 SC88-GV-12	2" DIA. SCH.40 TERMINATOR FOR GROUND WIRE	1	
20-10-413	(1) PECE PARKWAY DIAMOND PLATE TEMPORARY COVER GALV AFTER BEAD WELDING "LADWP-E" (1" HT.)	1	
20-10-413	(4) 1/2" x 1-1/2" PENTA HEAD BOLTS (NON-CORROSIVE)	4	

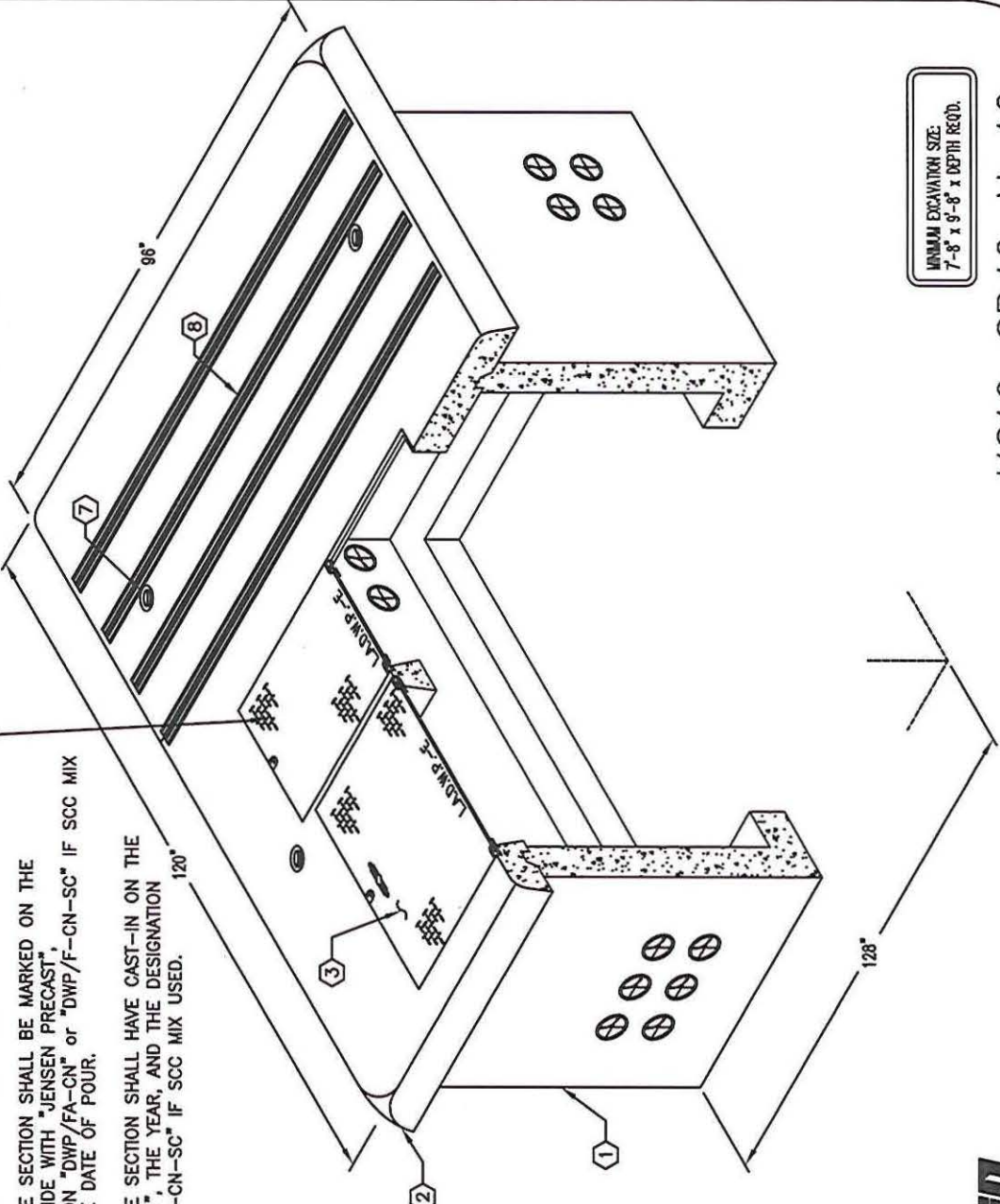
NOTES:

- CONCRETE DESIGNED IN ACCORDANCE WITH L.A.D.W.P. SPEC. P178-RB, ACI 318, AND ASTM C857, USING 5,500 PSI COMPRESSIVE STRENGTH CONCRETE AT 28 DAYS AND 60,000 PSI YIELD STRENGTH ASTM A-706 STEEL REINFORCEMENT PER CALC. #33364 & #33633.
- TRANSFORMER PAD DESIGNED FOR 100 PSF LIVE LOAD AND 1600 PSF DEAD LOAD.
- COVER IS DESIGNED FOR PARKWAY LOADING PER CALCS. #32215.
- VAULT TO BE PLACED ON A MIN. 6" COMPACTED CRUSHED ROCK 1", GRADE A or CONCRETE AGGREGATE #3, GRADE B (SSPWC, SUBSECTIONS 200-1.2 & 200-1.4), INSTALLATION AND EVEN LOAD DISTRIBUTION.
- CONCRETE MIX USED IN POURING THIS PRODUCT SHALL USE FLY ASH AND DCI AS AN ADMIXTURE.
- EACH CONCRETE SECTION SHALL BE MARKED ON THE INSIDE & OUTSIDE WITH "JENSEN PRECAST", THE DESIGNATION "DWP/FA-CN" or "DWP/F-CN-SC" IF SOC MIX USED, AND THE DATE OF POUR.
- EACH CONCRETE SECTION SHALL HAVE CAST-IN ON THE INSIDE "JENSEN", THE YEAR, AND THE DESIGNATION "FA-CN" or "F-CN-SC" IF SOC MIX USED.

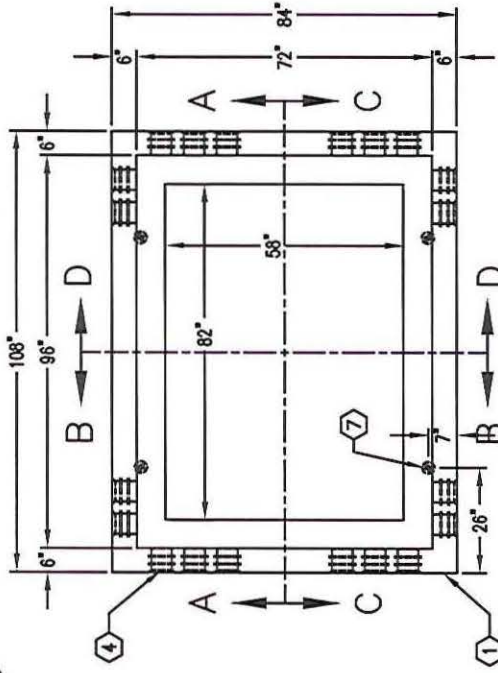
ORDERING INFORMATION:

K810-SB42-N-12 FOR ASSEMBLY AS SHOWN. APPROVED FOR L.A.D.W.P. SPEC. UB721-07. TOTAL WEIGHT OF ASSEMBLY AS SHOWN IS 12,300 Lbs.

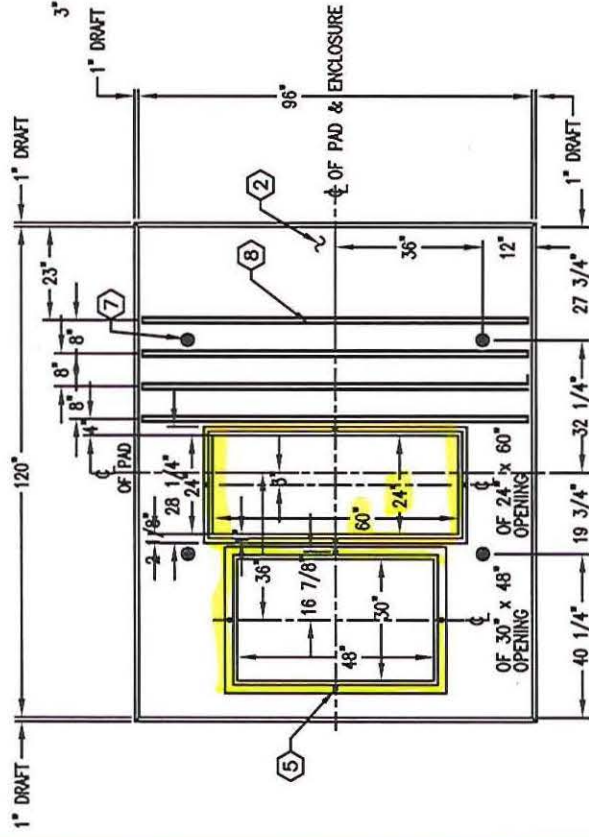
(10) OPTIONAL 3/16" DIAMOND PLATE COVER TO BE PROVIDED UPON REQUEST WITH NON-CORROSIVE FASTENING DEVICE ON THE CENTER LINE OF EACH SIDE. (4) 1/2" NON-CORROSIVE PENTA HEAD BOLTS ON THE CENTER LINE OF EACH SIDE (4 SIDES).



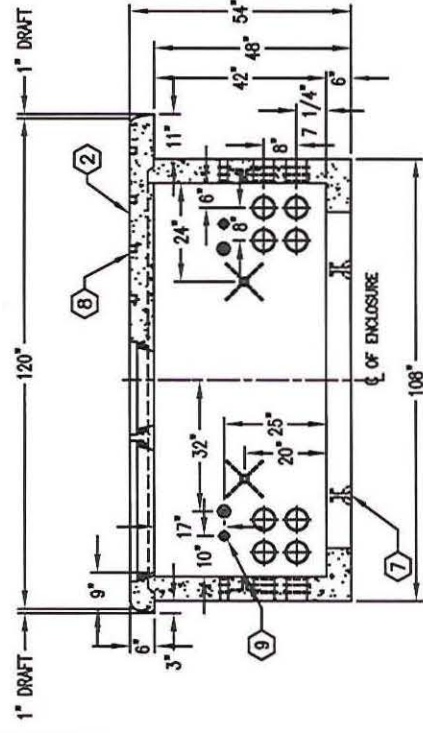
MINIMUM EXCAVATION SIZE:
7'-8" x 9'-8" x DEPTH REQD.



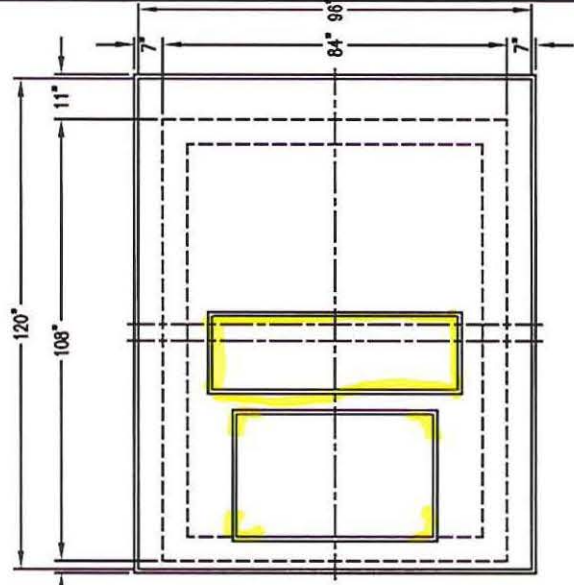
PLAN VIEW W/O TRANSFORMER PAD



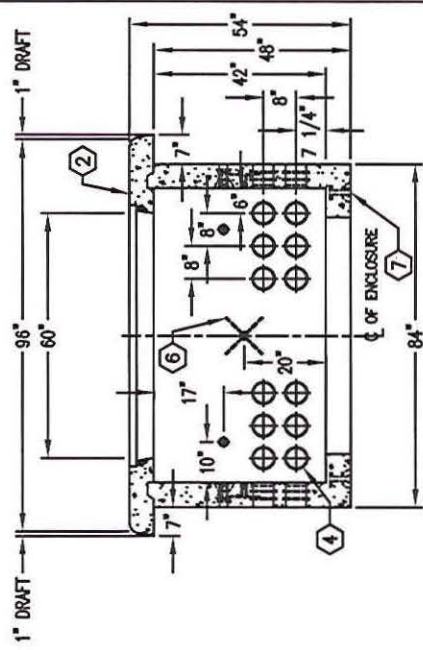
PLAN VIEW OF TRANSFORMER PAD



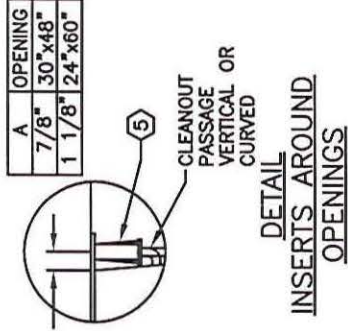
SECTION A-A



PLAN VIEW OF TRANSFORMER PAD W/ BOX



SECTION B-B



DETAIL INSERTS AROUND OPENINGS

#	DATE	DESCRIPTION	BY
A	11-14-14	REV PER LADWP DWG UB721-07 R13	EO