

5' x 10'-6" x 7' MANHOLE

MODEL K5106-FM84-12

L.A.D.W.P. SPEC.
G-354

NOTES:

STRUCTURE DESIGNED IN ACCORDANCE WITH:

AASHTO H-20 TRAFFIC BRIDGE LOADING

ASTM C-857 STANDARD PRACTICE FOR MINIMUM STRUCTURAL DESIGN LOADING FOR UNDERGROUND PRECAST CONCRETE UTILITY STRUCTURES

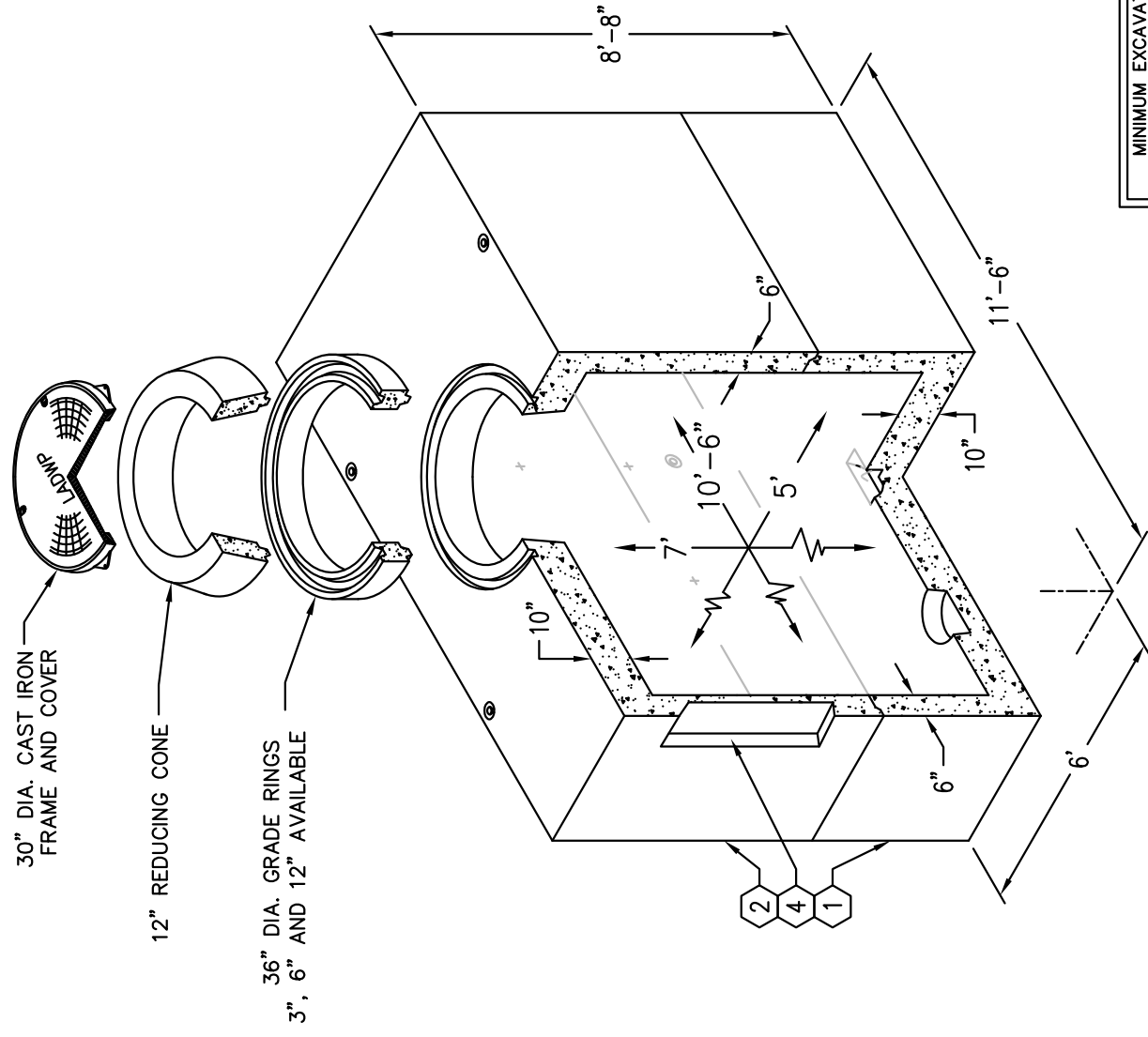
AMERICAN CONCRETE INSTITUTE ACI 318-05

CONCRETE COMPRESSIVE STRENGTH $F'_c = 5500$ PSI

REINFORCEMENT IN ACCORDANCE WITH ASTM A-706 WITH A YIELD STRENGTH OF $F_y = 60,000$ PSI.

6" MINIMUM COMPACTED GRANULAR MATERIAL RECOMMENDED FOR SUB-BASE FOR EASE OF INSTALLATION AND EVEN LOAD DISTRIBUTION.

1. UV5106-B30-12, 30" BOTTOM SECTION, 12,225 lbs
2. UV5106-T54-12, 54" TOP SECTION, 15,389 lbs
3. 12"x13" DIA. SUMP x 4-1/2" DEEP
4. 24" x 42" KNOCKOUT x 4-1/2" DEEP
5. 18"x18" KNOCKOUT x 4-1/2" DEEP
6. 7/8" DIA. GALV. PULL IRON.
7. 1/2" PLASTIC INSERT.
8. 12" DIA. RECESS.
9. 2" DIA. TERMS FOR GROUND ROD.

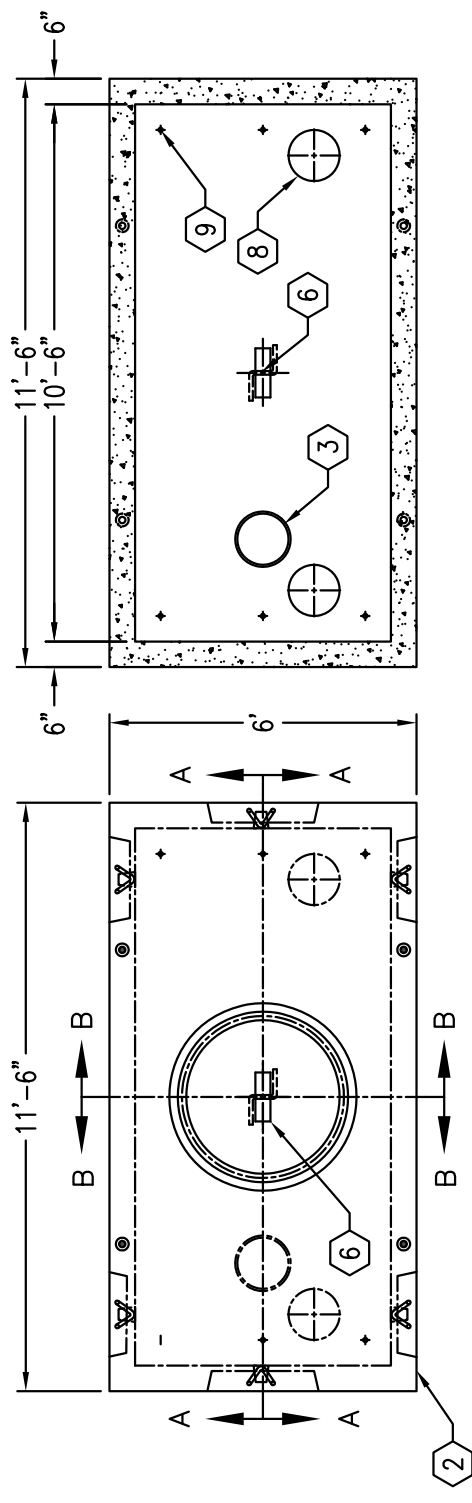


MINIMUM EXCAVATION SIZE:
7'-0" x 12'-6" x REQ'D DEPTH

5' x 10'-6" x 7' MANHOLE

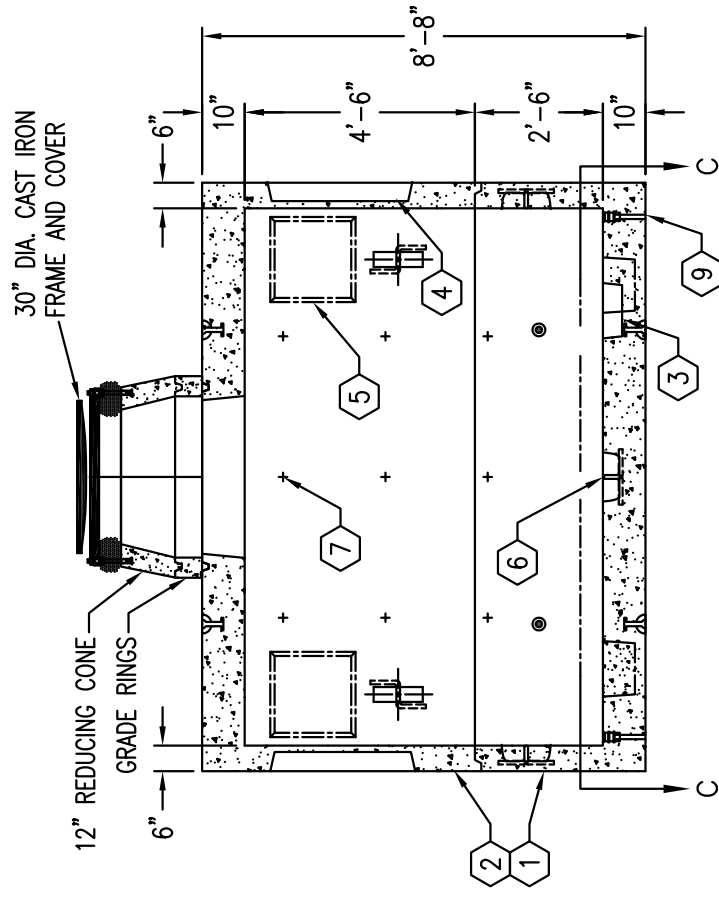
MODEL K5106-FM84-12

L.A.D.W.P. SPEC.
G-354

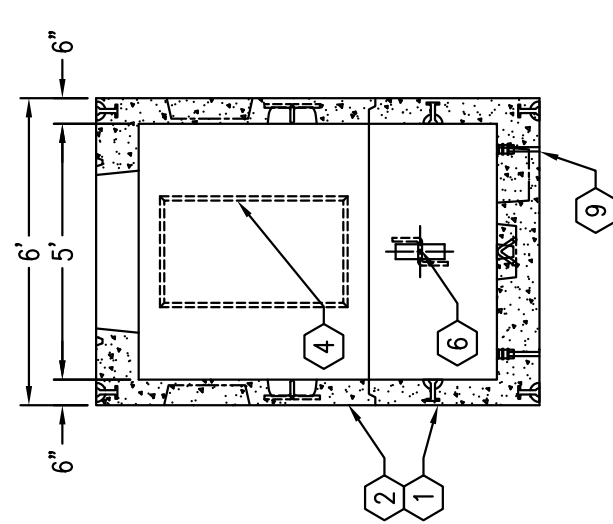


PLAN VIEW

SECTION C-C



SECTION A-A



SECTION B-B