

6' x 10' x 7' INTERCEPT PANEL VAULT

NOTES:

STRUCTURE DESIGNED IN ACCORDANCE WITH:

AASHTO H-20 TRAFFIC BRIDGE LOADING

ASTM C-857 STANDARD PRACTICE FOR MINIMUM STRUCTURAL DESIGN LOADING FOR UNDERGROUND PRECAST CONCRETE UTILITY STRUCTURES

AMERICAN CONCRETE INSTITUTE ACI 318-05

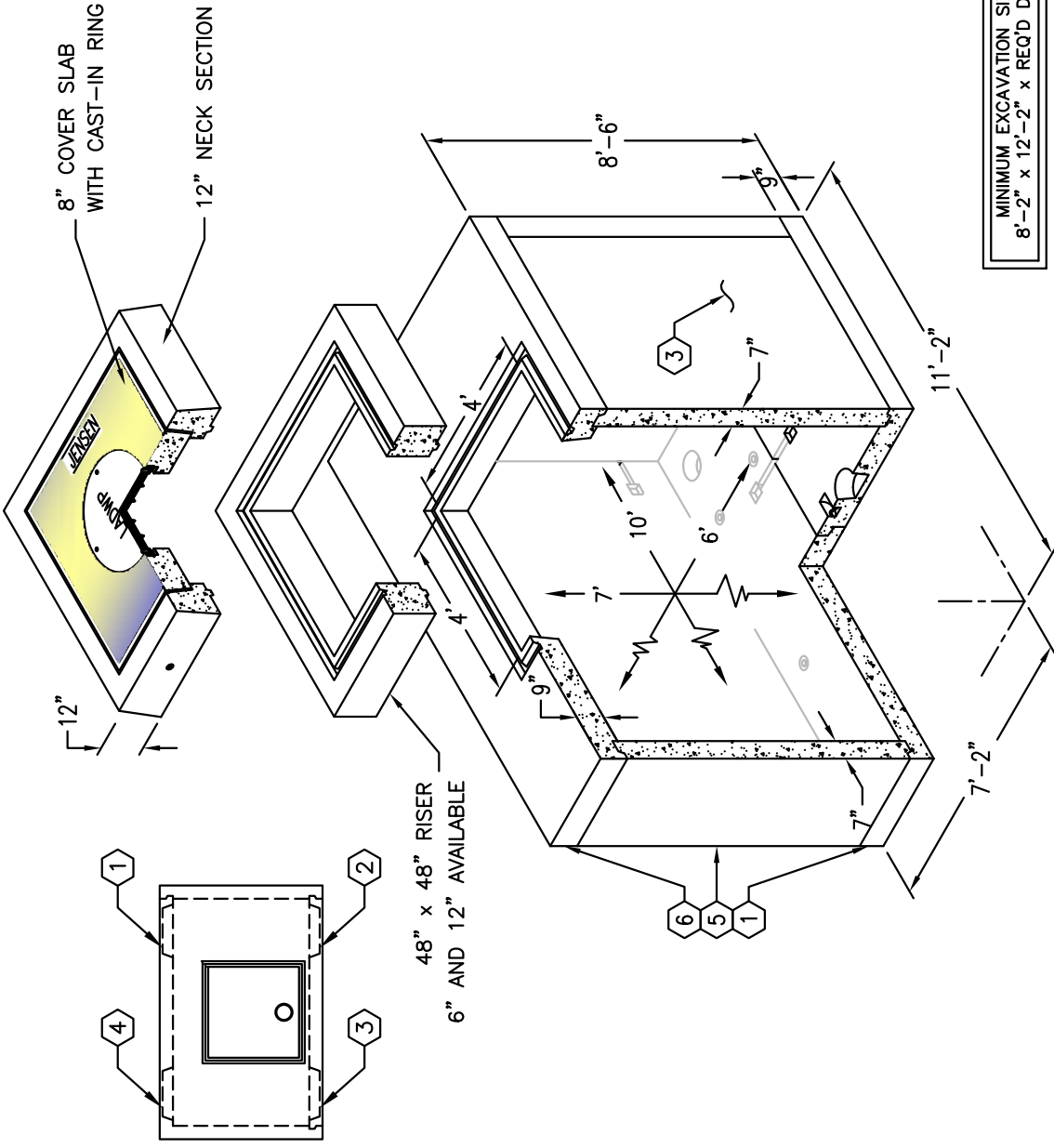
CONCRETE COMPRESSIVE STRENGTH F'_c = 5500 PSI

REINFORCEMENT IN ACCORDANCE WITH ASTM A-706 WITH A YIELD STRENGTH OF F_y = 60,000 PSI.

6" MINIMUM COMPACTED GRANULAR MATERIAL RECOMMENDED FOR SUB-BASE FOR EASE OF INSTALLATION AND EVEN LOAD DISTRIBUTION & INTERCEPT SLOT ORDERING DIAGRAM

WHEN ORDERING SPECIFY DESIRED KNOCKOUT(S) & INTERCEPT SLOT PER DIAGRAM NOTATIONS. KNOCKOUTS OMITTED WHEN NOT ORDERED.

1. PV610-B-12, 9" THICK SPLIT BASE SLAB. WT. 9,224 Lbs.
2. PV610-S1-12, 7" THICK SIDE WALL. WT. 6,636 Lbs.
3. PV610-S2-12, 7" THICK SIDE WALL. WT. 6,636 Lbs.
4. PV610-E1-12, 7" END WALL 1. WT. 3,576 Lbs.
5. PV610-E2-12, 7" END WALL 2. WT. 3,576 Lbs.
6. PV610-T-12, 9" ROOF SLAB. WT. 7,649 Lbs.
7. 8" x 9" DIA. SUMP x 5" DEEP.
8. 14" x 15" DIA. VENT KNOCKOUT X 5" DEEP. OPTIONAL SIDE VENT K.O.'S LOCATION OMIT IF NOT ORDERED.
- 8A. ORDERING DIAGRAM
9. 7/8" DIA. GALVANIZED PULL IRON.
10. 1/2" PLASTIC INSERTS.
11. 12" DIA. RECESS.
12. 2" DIA. TERMS FOR 1" DIA. GROUND ROD.

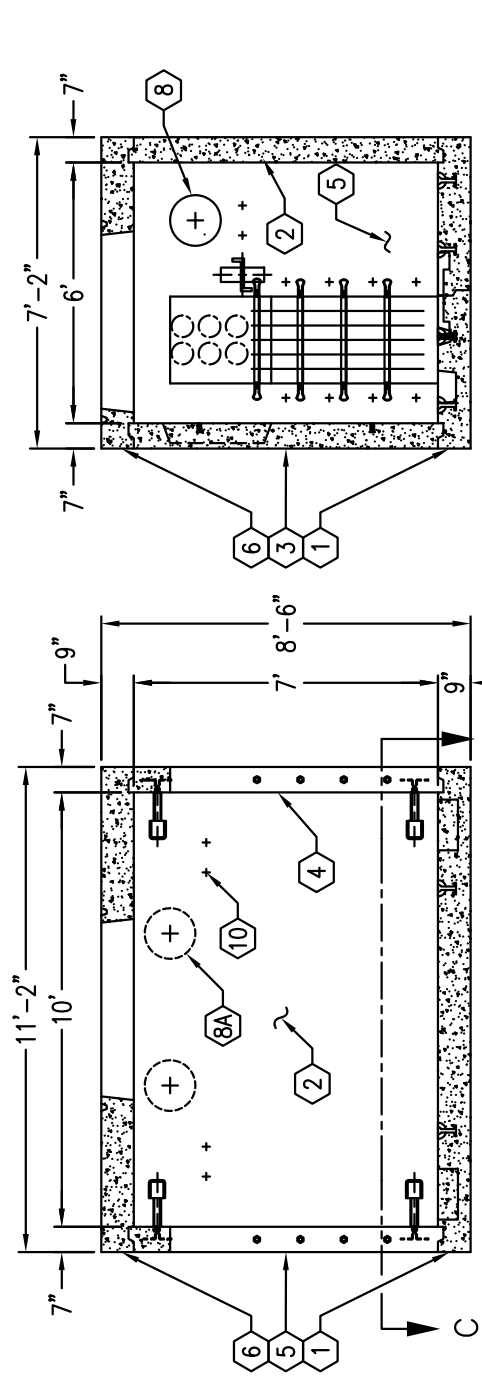


MINIMUM EXCAVATION SIZE:
8'-2" x 12'-2" x REQ'D DEPTH

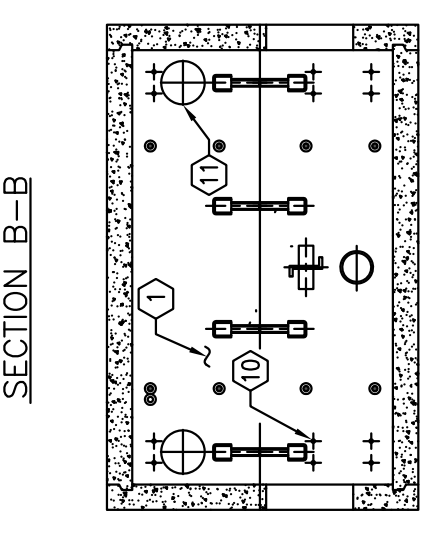
6' x 10' x 7' INTERCEPT PANEL VAULT

MODEL K610-PVF84-12

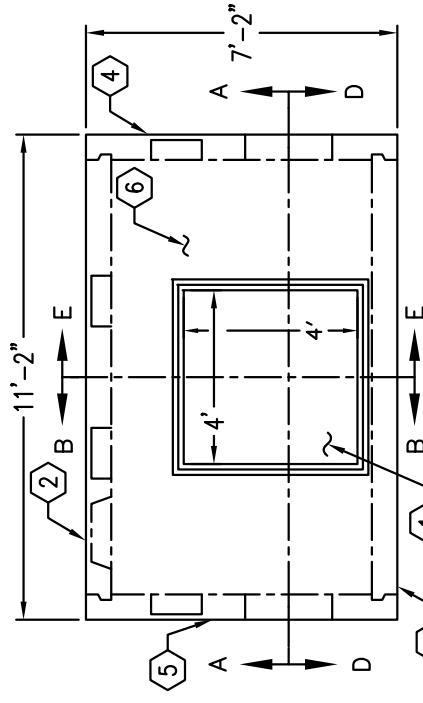
L.A.D.W.P. SPEC.
H-231 G2



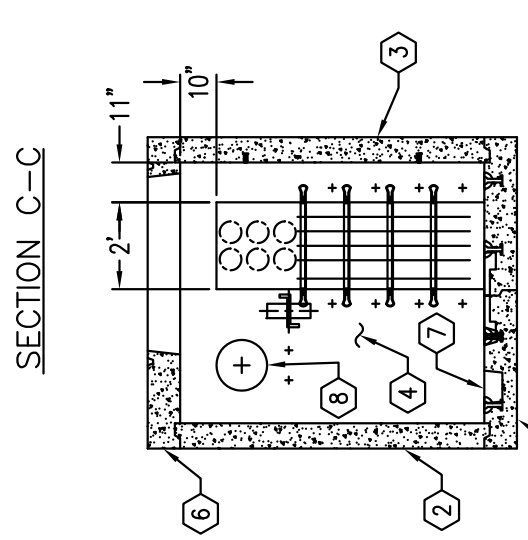
SECTION A-A



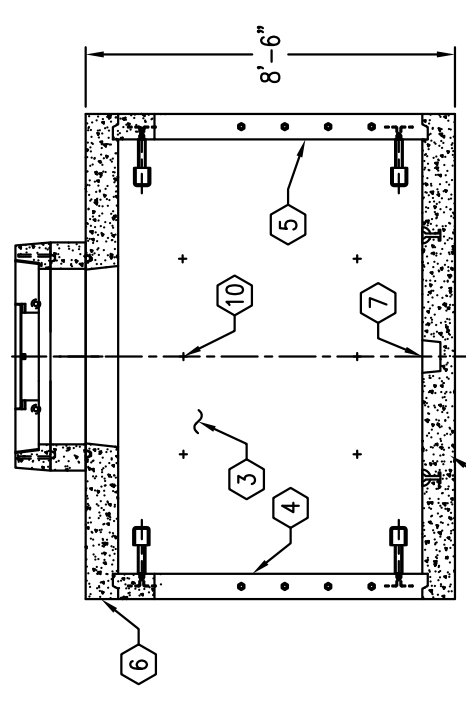
SECTION B-B



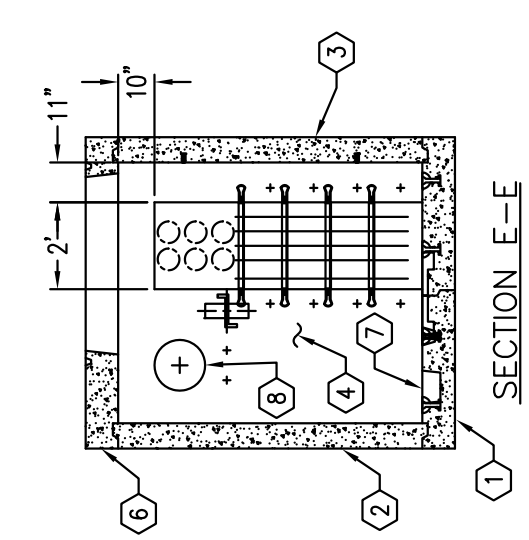
PLAN VIEW (BASE SLAB NOT SHOWN)



SECTION C-C



SECTION D-D



SECTION E-E