

8' x 16' x 9'-6" VAULT (202)

MODEL K816X-FV114-12202

L.A.D.W.P. SPEC
H-202 G2

NOTES:

STRUCTURE DESIGNED IN ACCORDANCE WITH:

AASHTO H-20 TRAFFIC BRIDGE LOADING

ASTM C-857 STANDARD PRACTICE FOR MINIMUM STRUCTURAL DESIGN LOADING FOR UNDERGROUND PRECAST CONCRETE UTILITY STRUCTURES

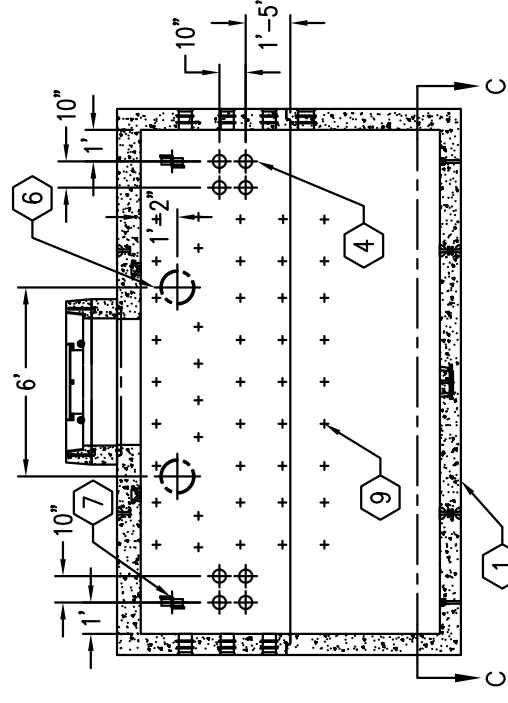
AMERICAN CONCRETE INSTITUTE ACI 318-05

CONCRETE COMPRESSIVE STRENGTH $F'_c = 5500$ PSI

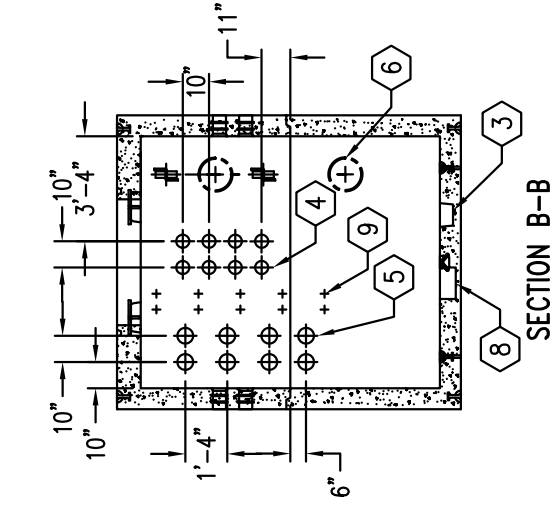
REINFORCEMENT IN ACCORDANCE WITH ASTM A-706 WITH A YIELD STRENGTH OF $F_y = 60,000$ PSI.

6" MINIMUM COMPACTED GRANULAR MATERIAL RECOMMENDED FOR SUB-BASE FOR EASE OF INSTALLATION AND EVEN LOAD DISTRIBUTION.

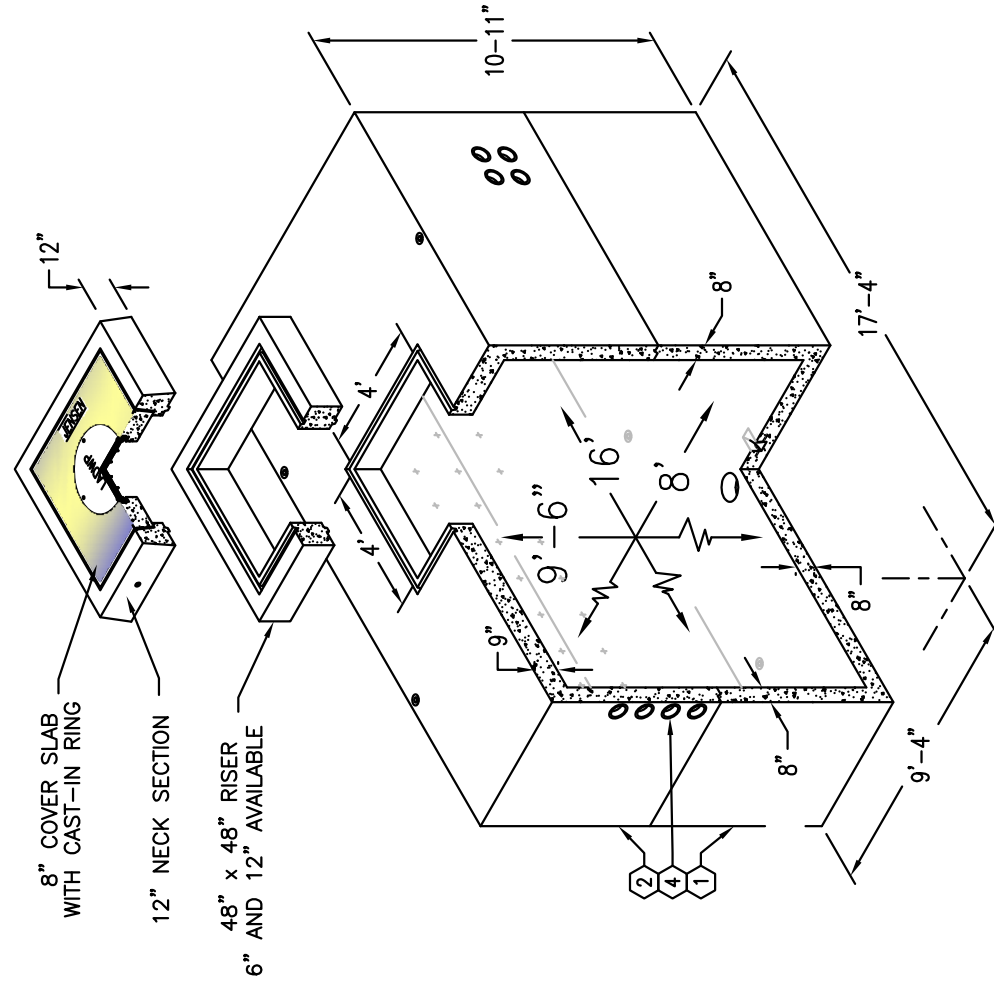
1. UV816X-B57-12202, 57" BOTTOM SECTION. WT. 40,250 lbs.
2. UV816X-T57-12202, 57" TOP SECTION. WT. 40,475 lbs.
3. 8" x 9" DIA. SUMP x 6" DEEP.
4. 5" DIA. TERMINATOR, TOP SECTION (32); BOTTOM SECTION (4).
5. 6" DIA. TERMINATOR, TOP SECTION (12); BOTTOM SECTION (4).
6. 14" x 15" DIA. VENT KNOCKOUT x 6 1/2" DEEP.
7. 7/8" DIA. GALV. FLUSH PULL IRON.
8. 12" DIA. RECESS.
9. 1 1/2" DIA. PLASTIC INSERTS BOLT ON FOR BOLT ON UNISTRUT.
10. 2" DIA. TERM FOR GROUND ROD.
11. 7/8" STAINLESS STEEL PULL IRON (4) TOP CEILING.



SECTION A-A



SECTION B-B



8" COVER SLAB WITH CAST-IN RING

12" NECK SECTION

48" x 48" RISER 6" AND 12" AVAILABLE



8" COVER SLAB WITH CAST-IN RING

12" NECK SECTION

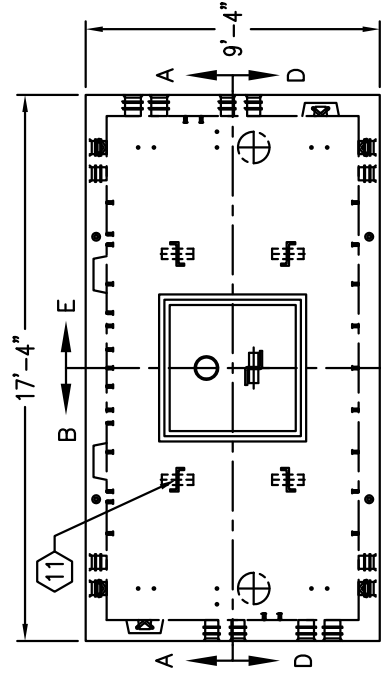
48" x 48" RISER 6" AND 12" AVAILABLE

MINIMUM EXCAVATION SIZE:
10'-1" x 18'-1" x REQ'D DEPTH

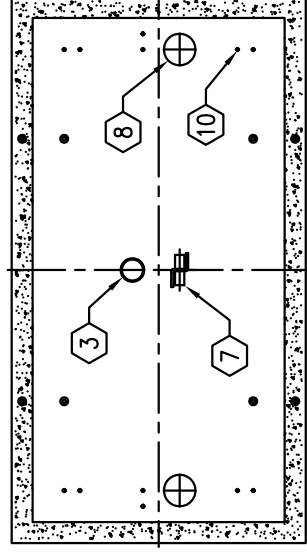
8' x 16' x 9'-6" VAULT (202)

MODEL K816X-FV114-12202

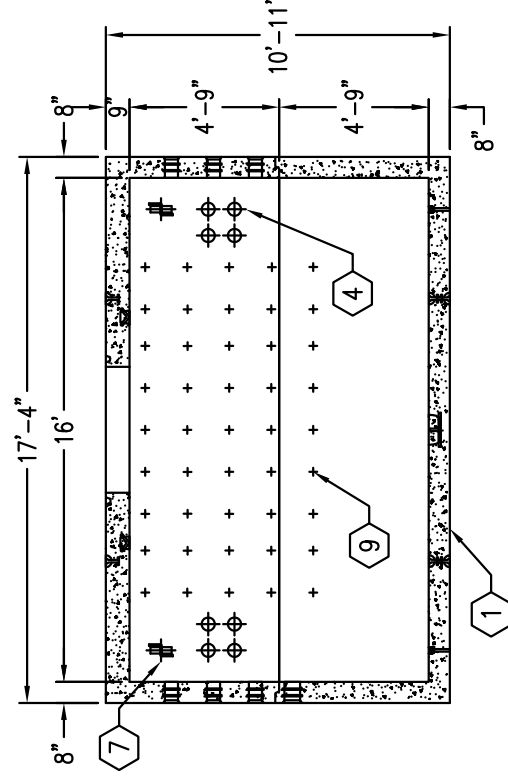
L.A.D.W.P. SPEC
H-202 G2



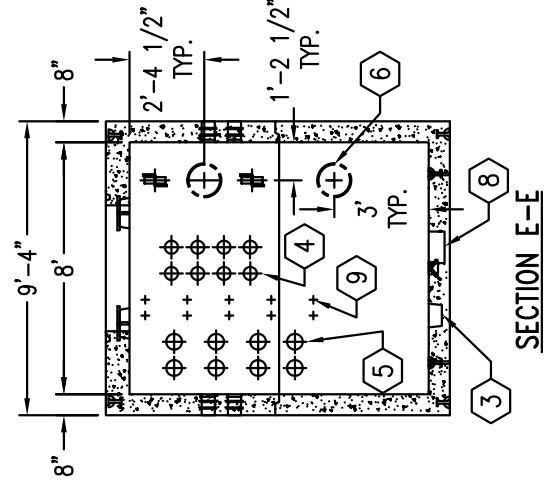
PLAN VIEW



SECTION C-C



SECTION D-D



SECTION E-E