

# 8' x 16' x 9'-6" VAULT (222)

MODEL K816X-FV114-12222

L.A.D.W.P. SPEC.  
H-222

**NOTES:**  
STRUCTURE DESIGNED IN ACCORDANCE WITH:  
ASHTO H-20 TRAFFIC BRIDGE LOADING  
ASTM C-857 STANDARD PRACTICE FOR MINIMUM STRUCTURAL DESIGN LOADING FOR UNDERGROUND PRECAST CONCRETE UTILITY STRUCTURES  
AMERICAN CONCRETE INSTITUTE ACI 318-05

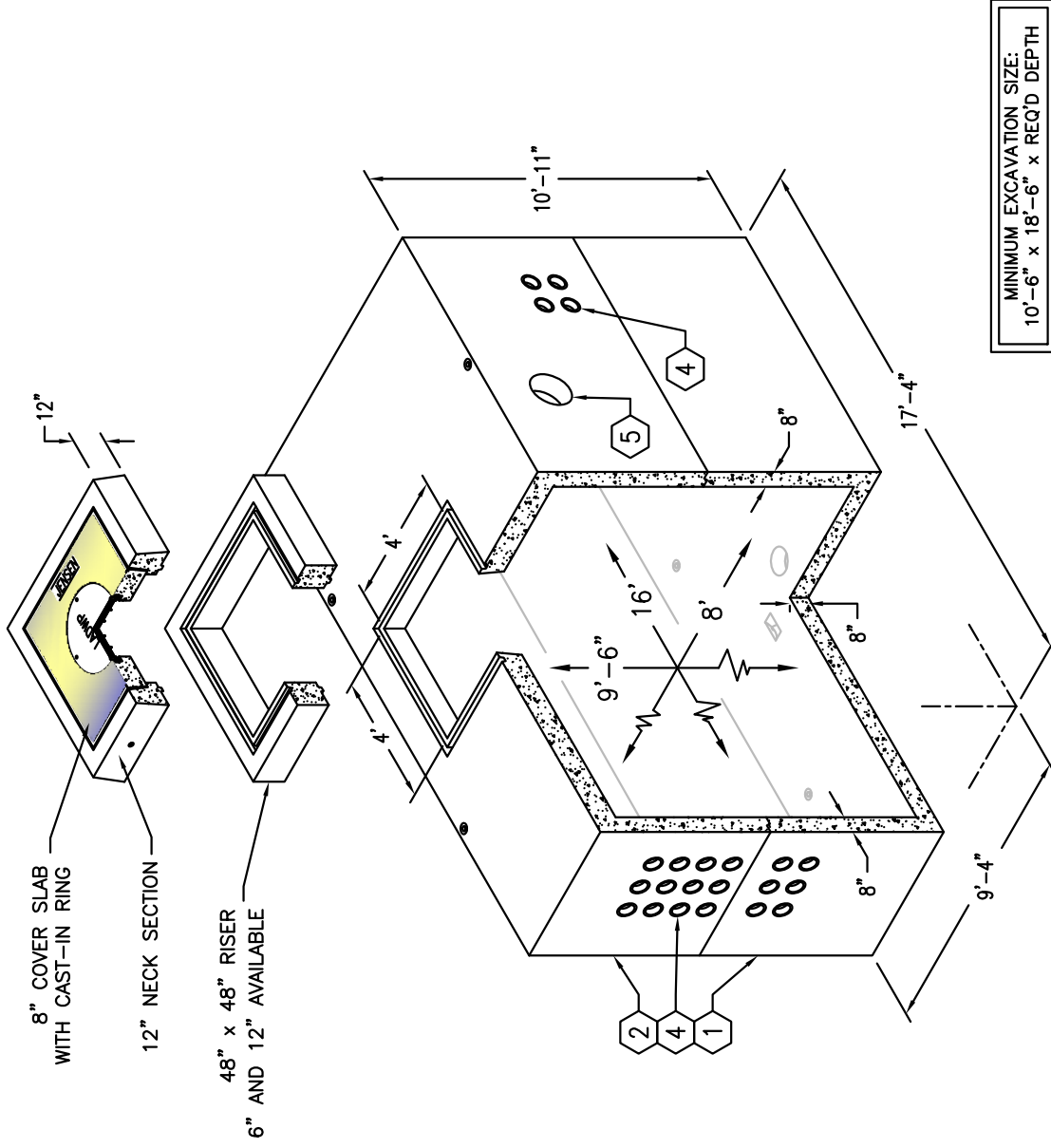
CONCRETE COMPRESSIVE STRENGTH  $F'_c = 5500$  PSI  
REINFORCEMENT IN ACCORDANCE WITH ASTM A-706 WITH A YIELD STRENGTH OF  $F_y = 60,000$  PSI.

6" MINIMUM COMPACTED GRANULAR MATERIAL RECOMMENDED FOR SUB-BASE FOR EASE OF INSTALLATION AND EVEN LOAD DISTRIBUTION.

**ORDERING INFORMATION**

K816X-FV114-12222 FOR ASSEMBLY AS SHOWN.  
APPROVED FOR L.A.D.W.P. SPEC. H-222, R5  
TOTAL WEIGHT OF ASSEMBLY AS SHOWN IS 80,725 lbs.

1. UV816X-B57-12222, 57" BOTTOM SECTION. WT. 40,250#.
2. UV816X-T57-12222, 57" TOP SECTION. WT. 40,475#.
3. 8" x 9" DIA. SUMP x 6" DEEP.
4. 5" DIA. TERMINATOR. BOTTOM SECTION (12); TOP SECTION (40).
5. 14" x 15" DIA. VENT KNOCKOUT x 6 1/2" DEEP.
6. 7/8" DIA. GALV. FLUSH PULL IRON.
7. 12" DIA. RECESS.
8. 1 1/2" PLASTIC INSERTS FOR BOLT ON UNISTRUT.
9. 2" DIA. TERM FOR GROUND ROD.
10. 7/8" RECESSED STAINLESS STEEL PULL IRON.



# 8' x 16' x 9'-6" VAULT (222)

MODEL K816X-FV114-12222

L.A.D.W.P. SPEC.  
H-222

