

MISSION CRITICAL



TRAINING

REDEFINED

CAPABILITIES STATEMENT

The Mission Critical training ranch, located near Gatesville (Fort Hood), Texas is a privately owned and operated 2300 acre facility, developed for the express purpose of providing both individuals and teams with the ideal training arena required to take their current skill-set to the next level.



POINT OF CONTACT

Brooks Wilson

Chief Executive Officer

(830) 534-3110

brooksw77@protonmail.com

CAGE: 8ELA8

DUNS: 113393924

TIN: 814476491

WWW.MISSIONCRITICALTX.COM

CORE COMPETENCIES

Rogers Range (six reactive shooting bays)
Flat Range (handgun / carbine / vehicle work)
Nine Precision Long Ranges (500 yards – 1 mile)
100+ Portable AR-500 UKD Steel Targets
Reactive and Running Man Long Range Targets
Multiple Heli Sniping Courses of Fire
2300 Acres of Native Land for RECCE / Land Nav

DIFFERENTIATORS

Discrete training location, by invitation only.
Not open to the public. No memberships or day passes.
Parallel multi-range training capabilities, whereby discerning units may operate autonomously on the various ranges, well outside visual range of others.

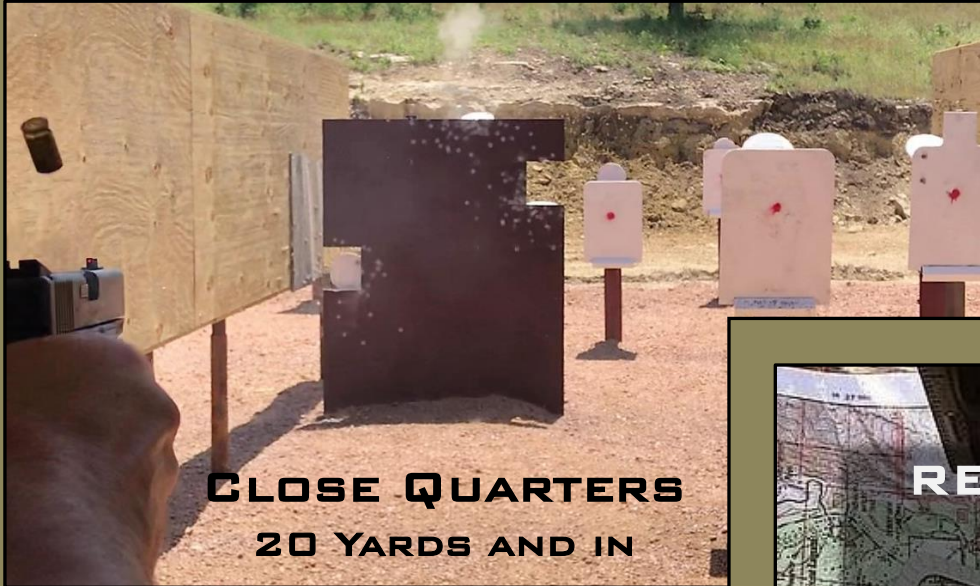
Rogers Range

A computer driven reactive target shooting system once reserved for the top 1% of American war-fighters is now available to all military & law enforcement units.



ENGAGEMENT DISTANCE CAPABILITIES

CLOSE QUARTERS TO ONE MILE



ROGERS RANGE

CLOSE QUARTERS BATTLE SIMULATOR



MISSION CRITICAL



ROGERS RANGE





ROGERS RANGE



Retired FBI agent and renowned firearms instructor Bill Rogers originally developed the venerable “Rogers Range” as a close quarters battle simulator for tip of the spear special operations MIL and LE units. This computer driven, pneumatic target system runs courses of fire based upon the science of human reaction and action times, as well as shot split and target transition times.

All courses of fire are programmed to maintain this strict neurological and physical timing standard.

To date, no other live-fire target system in the world comes close to mimicking the incredible capabilities of the Rogers Range.





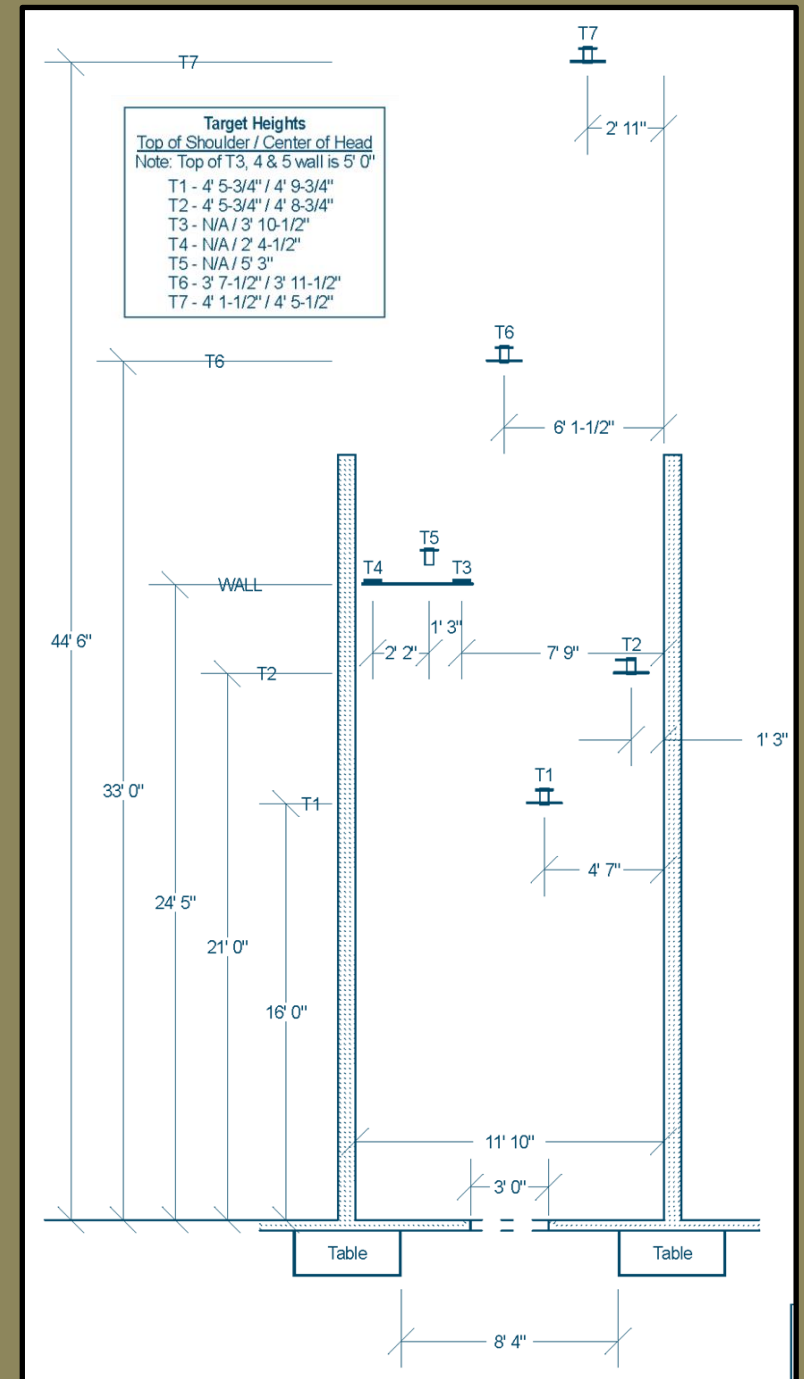
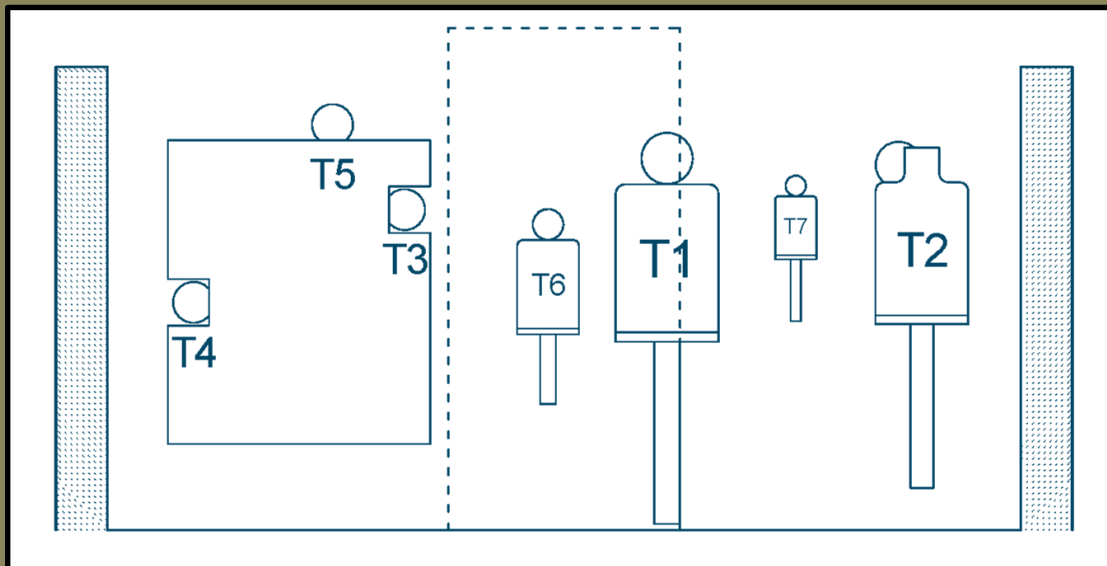
ROGERS RANGE



Mastery of time, space and distance along with the ability to rapidly navigate angles and layers are critical to winning the fight.

The Mission Critical Rogers Range is comprised of six separate, yet mirrored bays or lanes. Shooters are confronted with seven, 8" concealed targets which lie in wait at different elevations, ranging in distance from 6 to 16 yards (one yard is added to each target setback dimension to account for the required doorway standoff).

Target exposures running in random sequences, at a multitude of elevations, coupled with a wide variety of transition widths from target to target presses the shooters mental and physical abilities to the extreme.





ROGERS RANGE

PISTOL TRAINING



Shooting and reloading is broken up equally into thirds: two hands, strong hand only and support hand only.

Presentation of the pistol is conducted from the extended ready position (low ready), transition position (compressed high thoracic) and the holster.

With LEO's reporting a large percentage of engagements being performed as single-handed events, one handed operation and proficiency is clearly critical to survival.

Unlike static steel targets on a flat range, the Rogers Range is unforgiving. If the shooters timing is even slightly behind the curve, hesitation sets in, or minor mistakes are made, the targets will have withdrawn long before there is time to recover.





ROGERS RANGE PISTOL - DARKNESS



FBI statistics describe a high percentage of engagements occurring from low-light to no-light conditions. As the sun begins to set on the range, training begins with handheld and weapon mounted light presentation techniques. The daylight training emphasis on single handed shooting and reloading proficiency now becomes quite relevant as handheld flashlights enter the equation.

The range is purpose built for night operation, offering a multitude of lighting conditions including target back and side lighting simulations. All six bays are equipped with individually operated overhead police cruiser light bars to simulate this oftentimes disorienting condition. Red light “cold range” indicators are employed as an additional layer of safety for students, allowing them to move down range to assess hits and re-paint targets, without compromising their night adapted vision.





ROGERS RANGE

SUB-GUN & CARBINE

TRAINING



The Close Quarters Carbine (and sub-gun) course is based upon the original Rogers POI, with modifications made to account for faster transition/split times and slower reload times. All shooting is performed strong side, from both the low and high ready positions. As part of the program, M4 style rifles chambered in 9mm, outfitted with a red dot sight and co-witnessed iron sights, and a sling are provided by Mission Critical. Students/agencies are welcome to bring their own pistol caliber carbines and/or sub-guns for the course as well. Both day and night training options are available.



ALPHA RANGE

500 YARD MULTIPURPOSE



MISSION CRITICAL



ALPHA RANGE

500 YARD MULTIPURPOSE



With raised berms every 100 yards and outfitted with a variety of portable paper target stands and AR-500 steel targets, Alpha Range is the perfect setting for establishing zero with infantry/patrol rifles equipped with optics & iron sights, Designated Marksman Rifles (DMR), Special Purpose Rifles (SPR) and Precision Long Range (PLR) platforms.



- 1) Rogers Range
- 2) Classroom
- 3) 500 Yard Berm



- 4) 0 Yard Line Berm



ALPHA RANGE

500 YARD MULTIPURPOSE



Designated Marksman Rifles (DMR)
Special Purpose Rifles (SPR)
Precision Long Range (PLR)





ALPHA RANGE

500 YARD MULTIPURPOSE



Pistol
Carbine
Vehicle





ALPHA RANGE

DARKNESS

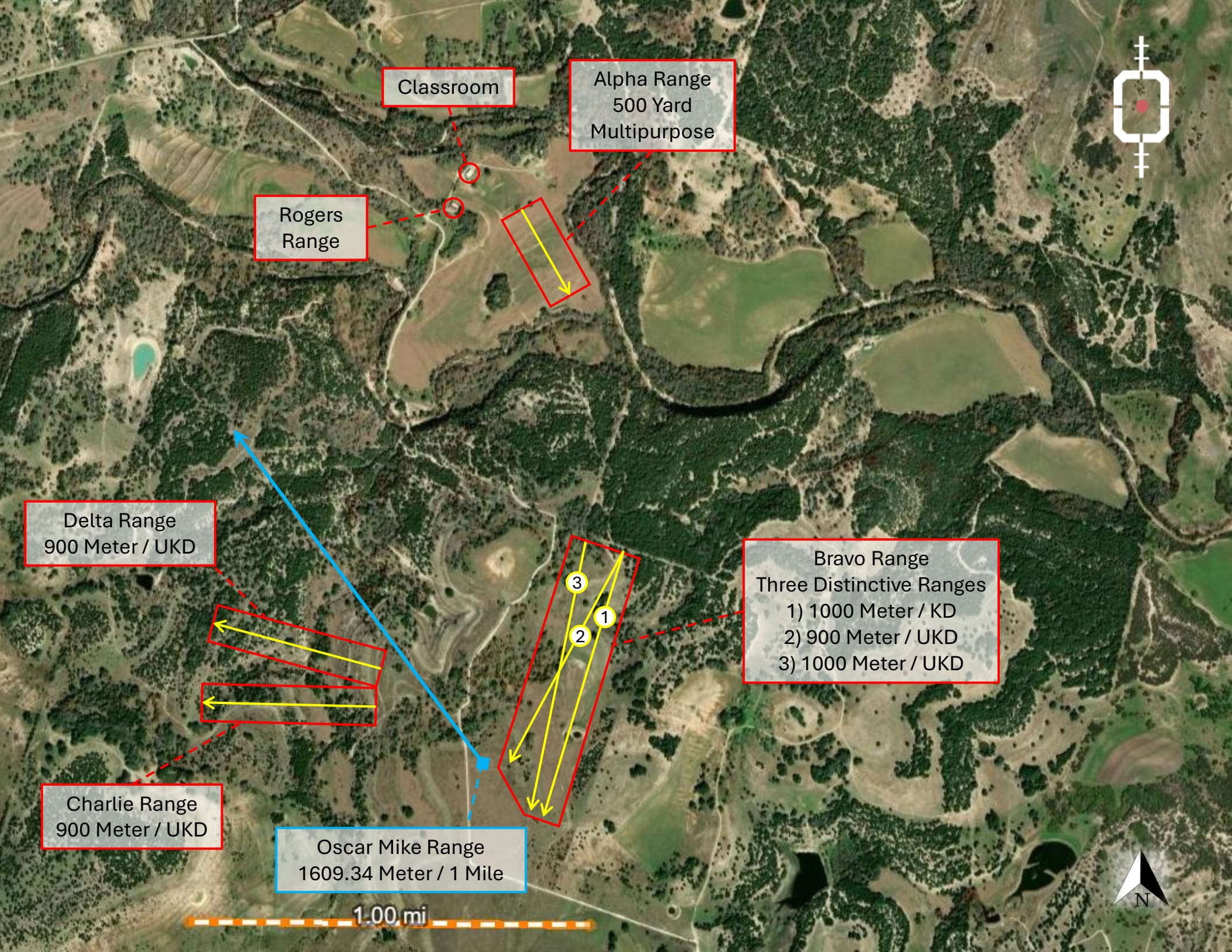


Pistol
Carbine
Vehicle



**DESIGNATED MARKSMAN
PRECISION LONG RANGE
RECCE
LAND NAVIGATION**





Classroom

Alpha Range
500 Yard
Multipurpose

Rogers
Range

Delta Range
900 Meter / UKD

Bravo Range
Three Distinctive Ranges
1) 1000 Meter / KD
2) 900 Meter / UKD
3) 1000 Meter / UKD

Charlie Range
900 Meter / UKD

Oscar Mike Range
1609.34 Meter / 1 Mile

1.00 mi





Alpha Range
500 Yard
Multipurpose

Rogers
Range

Delta Range
900 Meter / UKD

Charlie Range
900 Meter / UKD

Oscar Mike Range
1609.34 Meter / 1 Mile

Bravo Range
Three Distinctive Ranges

- 1) 1000 Meter / KD
- 2) 900 Meter / UKD
- 3) 1000 Meter / UKD

BRAVO 1 RANGE

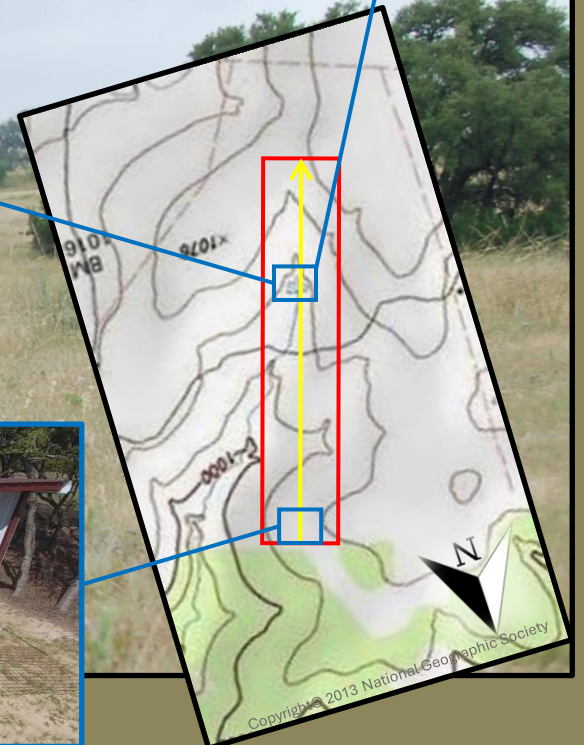
1000 METER KNOWN DISTANCE

- 6 BENCH COVERED ZERO SHACK
- 14 PORTABLE AR-500 TARGETS PLACED IN 100M INTERVALS FROM 400M TO 1000M
- 50 BMG RATED AR-500 TARGET LOCATED AT 1000M
- PORTABLE RUNNING MAN TARGET TRACK SYSTEM ALLOWS FOR RAPID MODIFICATION OF TARGET LOCATION AND DISTANCE



Portable Running Man Target

MISSION CRITICAL



BRAVO 2 RANGE

900 METER UNKNOWN DISTANCE

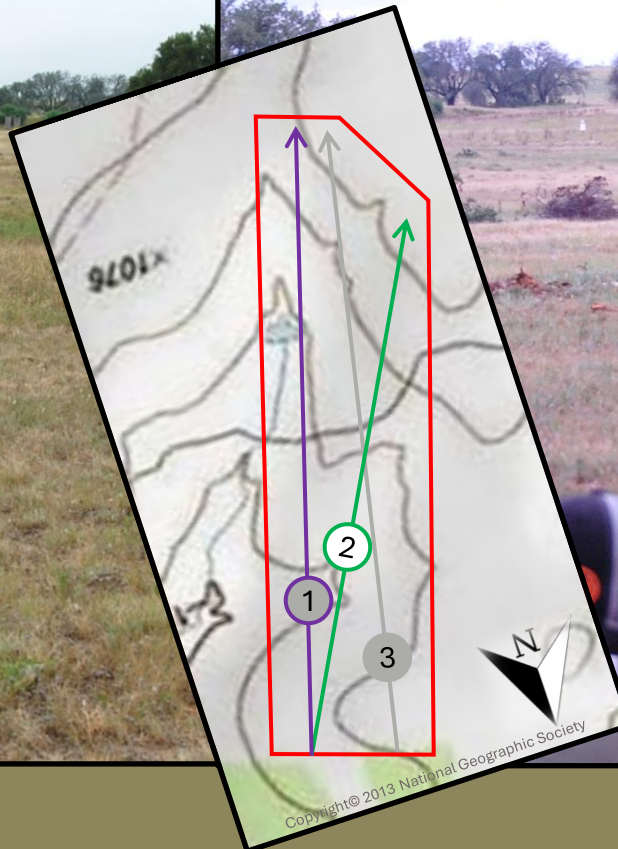
- 20+ PORTABLE AR-500 TARGETS
- ALLOWS FOR IMMEDIATE SHIFTING OF FIRE BETWEEN BRAVO 1 KD AND BRAVO 2 UKD TARGET ARRAYS

MISSION CRITICAL

BRAVO 1



BRAVO 2

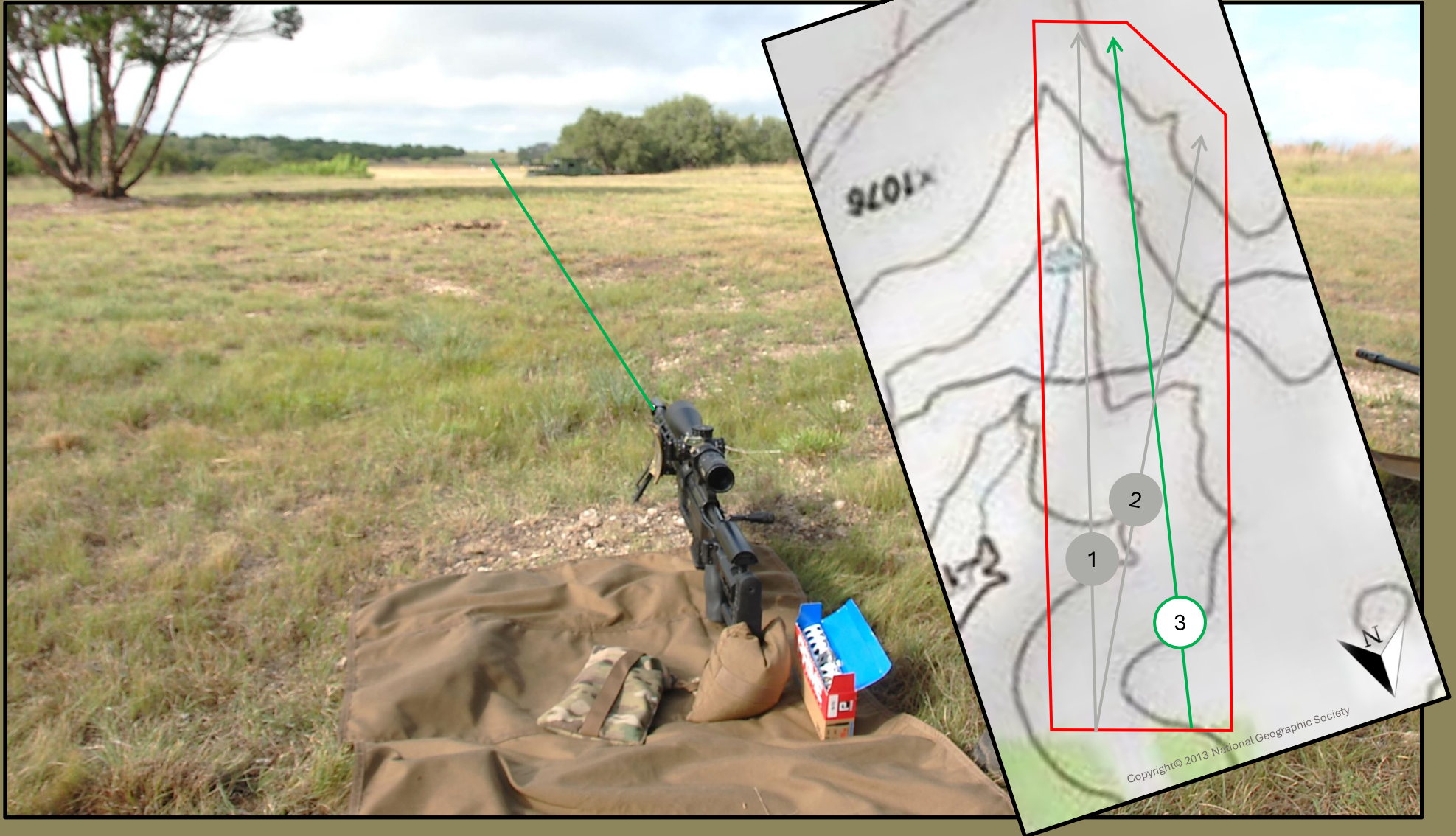


BRAVO 3 RANGE

1 000 METER UNKNOWN DISTANCE

- 20+ PORTABLE AR-500 TARGETS
- EQUIPPED WITH SWINGING PLATFORM

MISSION CRITICAL



CHARLIE RANGE

900 METER UNKNOWN DISTANCE

- 20+ PORTABLE AR-500 TARGETS
- ELEVATED PLATFORM AND/OR GROUND-BASED SHOOTING POSITIONS

MISSION CRITICAL



DELTA RANGE

900 METER UNKNOWN DISTANCE

- 20+ PORTABLE AR-500 TARGETS

MISSION CRITICAL





- 20+ INTERMITTENT PORTABLE AR-500 STEEL TARGETS RANGING FROM 600 TO 1609.34M
- SUPPORTS PLATFORMS UP TO 50 BMG

OSCAR MIKE (ONE MILE) RANGE



RECCE



2300 ACRES
of native land, comprised
of wide-ranging terrain
features, delivers an
unparalleled
environment for
reconnaissance,
surveillance, and
land navigation
operations.

MISSION CRITICAL



The Mission Critical ranch is a privately owned and operated premier training facility.

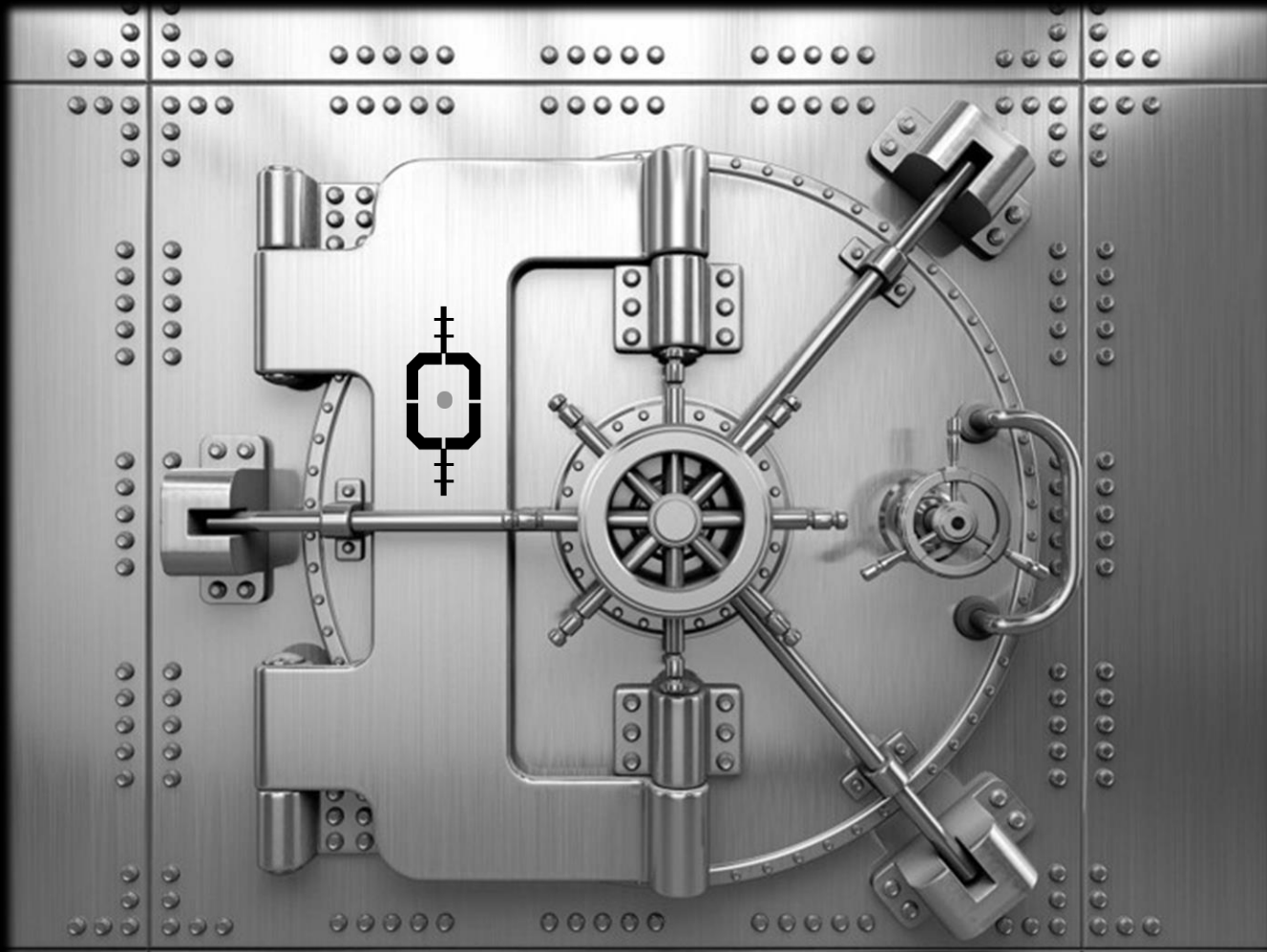
It is not open to the public.

Restricted access is by invitation only.

Monitored and secured ALPR (automatic license plate reader) equipped gated entry points.

Motion detecting and tracking video surveillance and monitoring systems are located at key points throughout the facility

MISSION CRITICAL ARMORY



SOT BATF Approved Secure Storage Facility

MISSION CRITICAL

WWW.MISSIONCRITICALTX.COM

BROOKS WILSON

(830) 534-3110

BROOKSW77@PROTONMAIL.COM

CAGE: 8ELA8 DUNS: 113393924

