

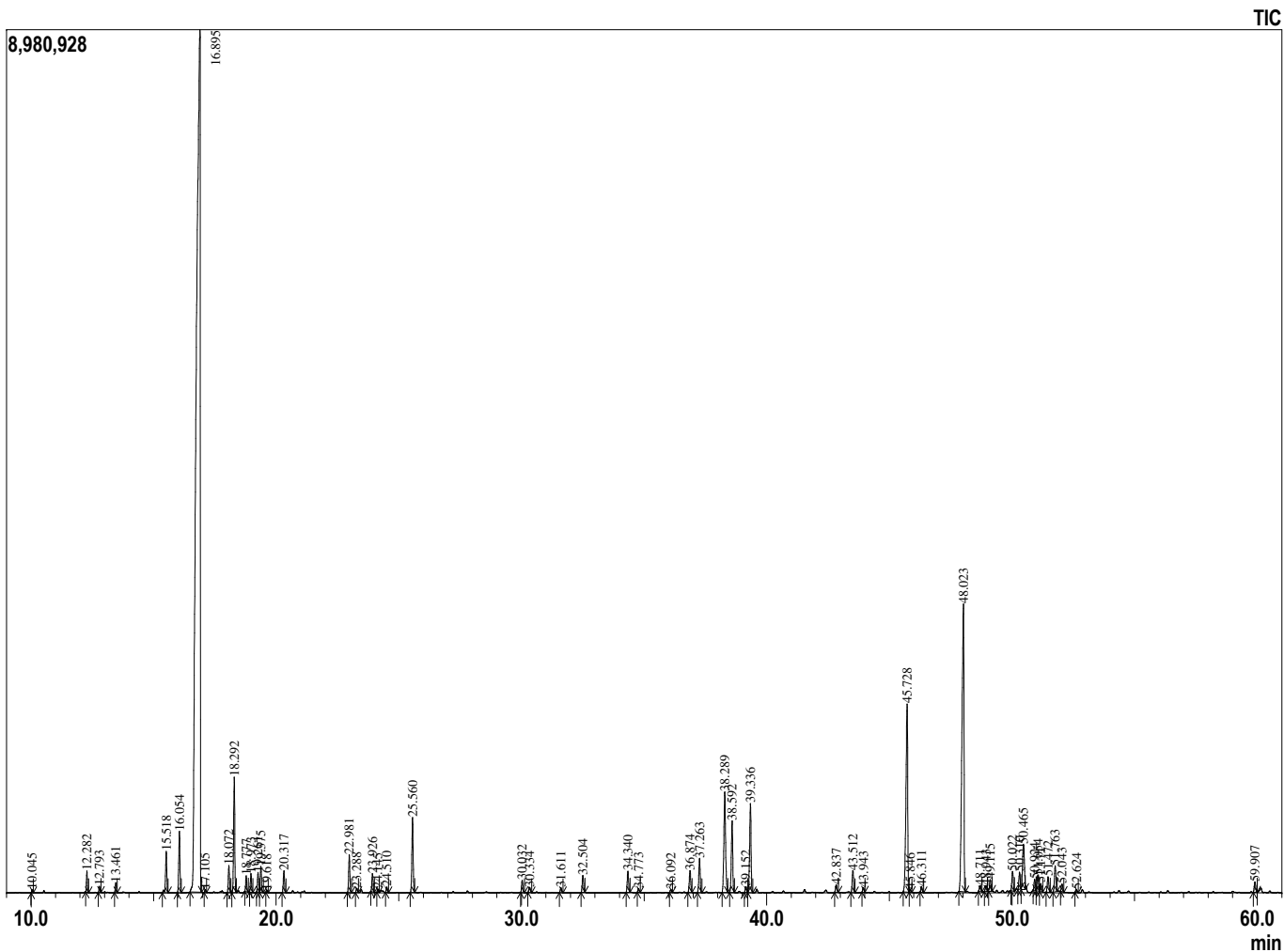
**Analyzed by** : Dr. Prabodh Satyal  
**Analyzed** : 10/1/2019 4:44:14 AM  
**Sample Type** : Essential Oil  
**Sample Name** : CV\_12  
**Company Name** : CV Hops LLC  
**Lot#** : NA  
**Injection Volume** : 0.30

**Sample Information**



Peak Report TIC

R.Time	Name	Area%
10.045	3-Hexanone, 4-methyl-	0.04
12.282	Isobutyl isobutyrate	0.34
12.793	Methyl hexanoate	0.10
13.461	Pinene <alpha>	0.17
15.518	Isoamyl propionate	0.89
16.054	Pinene <beta>	1.25
16.895	Myrcene	57.66
17.105	Unidentified	0.05
18.072	Isoamyl isobutyrate	0.52
18.292	2-Methylbutyl isobutyrate	2.31
18.777	Methyl heptanoate	0.30
18.973	Unidentified	0.37
19.261	Limonene	0.38
19.375	Phellandrene <beta>	0.51
19.618	Ocimene <Z-beta>	0.05
20.317	Ocimene <E-beta>	0.44
22.981	Methyl 6-methyl heptanoate	0.78
23.288	Nonanone <2->	0.09
23.926	Linalool	0.37
24.145	Methyl butyl-2-methyl butyrate<2->	0.06
24.510	Methyl butyl isovalerate<2->	0.11
25.560	Methyl octanoate	1.63
30.032	Nonanoic acid, methyl ester	0.27
30.334	Methyl 6-methyloctanoate	0.14
31.611	4-Nonenoic acid, methyl ester	0.11
32.504	Methyl nonanoate	0.38
34.340	Geraniol	0.47
34.773	Undecanone <4->	0.08
36.092	Cyclooctyl acetate	0.07
36.874	Unidentified	0.54
37.263	Undecanone <2->	0.80
38.289	Methyl decenoate<4> Z	2.94
38.592	Unidentified	1.72
39.152	Geranate <methyl->	0.13
39.336	Methyl decanoate	2.17
42.837	Copaene <alpha>	0.18
43.512	Unidentified	0.54
43.943	Dodecanone<2>	0.11
45.728	Caryophyllene <beta>	5.61
45.846	Methyl undecanoate	0.07
46.311	Copaene <beta>	0.13
48.023	Humulene <alpha>	9.89
48.711	Undecenyl acetate	0.16
48.943	Cadina-1(6),4-diene <cis->	0.16
49.115	Cadina-1(6),4-diene <trans->	0.29
50.022	Selinene <beta>	0.48
50.310	Tridecan-2-one	0.36
50.465	Unidentified	1.43
50.924	Methyl 3,6-dodecadienoate	0.24
51.054	Geranyl isobutyrate	0.39
51.171	Unidentified	0.19
51.472	Amorphene <delta>	0.40
51.763	Cadinene <delta>	0.63
52.043	Zonarene+Methyl dodecanoate	0.19
52.624	Cadine-1,4-diene <trans->	0.06
59.907	Unidentified	0.25
		100.00



Copyright © 2019 by Aromatic Plant Research Center (APRC). All rights reserved.  
 The information contained in this document may not be used, published or  
 redistributed, including online, without the prior written consent of APRC.

**Reviewed by: Ambika Poudel**