

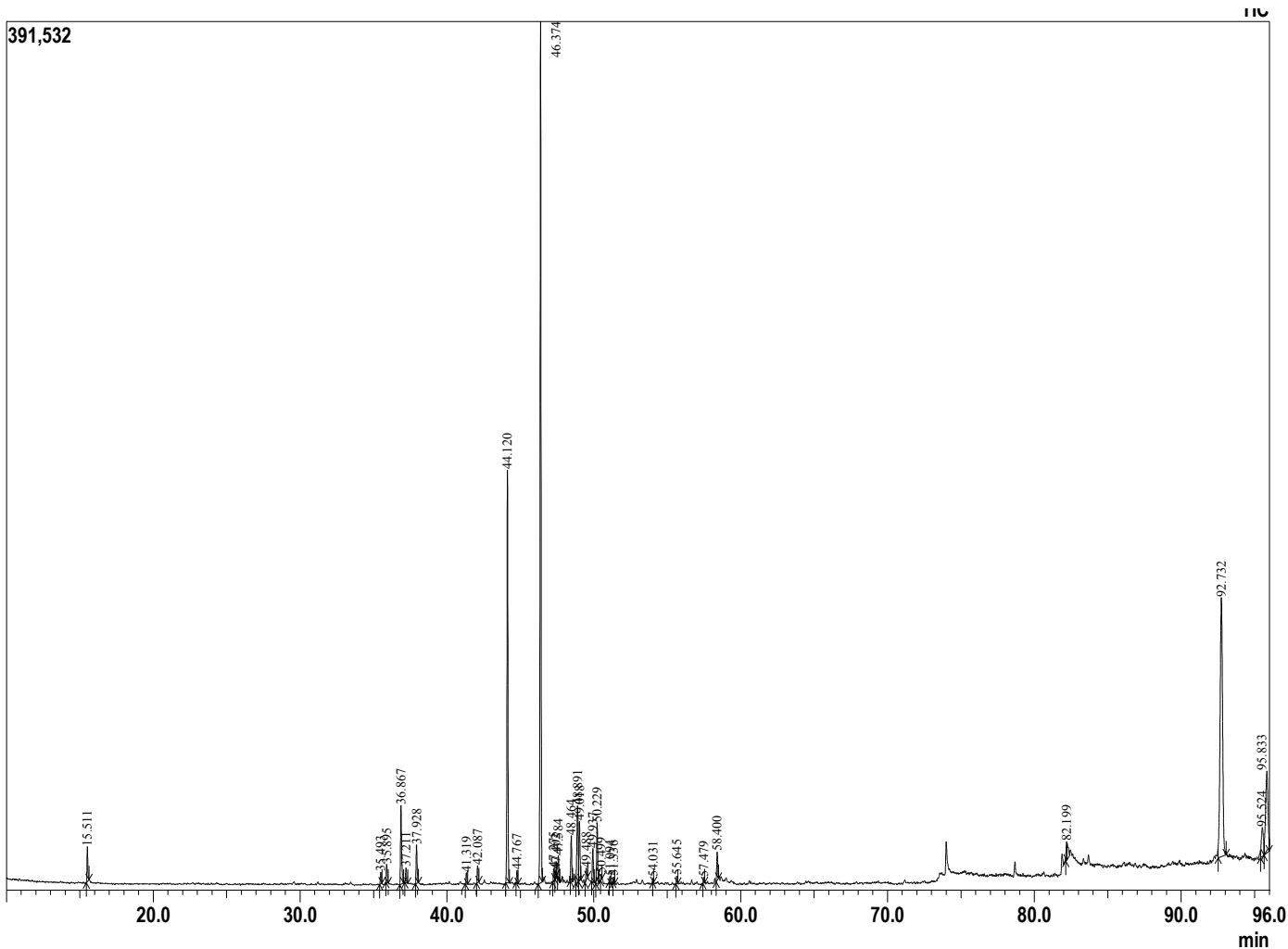
Sample Information

Analyzed by : Dr. Prabodh Satyal
 Analyzed : 9/5/2019 2:31:04 PM
 Sample Type : Essential Oil
 Sample Name : CV_C
 Lot# : NA
 Injection Volume : 0.30



Peak Report TIC

R.Time	Name	Area%
15.511	Myrcene	1.05
35.493	Decanoic acid, methyl ester	0.39
35.895	Undecanone<2->	0.65
36.867	Methyl decanoate<4> Z	3.08
37.211	Unidentified	0.62
37.928	Methyl decanoate	1.38
41.319	Copaene<alpha->	0.36
42.087	Undecanoate <methyl->	0.57
44.120	Caryophyllene <beta->	14.60
44.767	Copaene <beta->	0.42
46.374	Humulene <alpha->	29.35
47.275	Unidentified	0.38
47.402	Cadina-1(6),4-diene<cis->	0.16
47.584	Cadina-1(6),4-diene <trans->	0.71
48.464	Selinene <beta->	1.59
48.891	Selinene <alpha->	3.47
49.018	cis-5-Dodecenoic acid, methyl ester	2.36
49.488	3,6-Dodecadienoic acid, methyl ester	0.44
49.937	Amorphene <delta>	1.21
50.229	Cadinene <delta>	2.13
50.499	Zonarene	0.14
51.094	Cadina-1,4-diene<trans->	0.21
51.336	Cadinene <alpha>	0.15
54.031	Caryophyllene oxide	0.09
55.645	Humulene epoxide II	0.25
57.479	Muurolol <alpha>	0.18
58.400	Aplotaxene	1.01
82.199	Unidentified	0.64
92.732	Colupulone	23.27
95.524	Adlupulone	2.19
95.833	Lupulon	6.94
		100.00



Comments:
 Lupulones are present in significant quantities.
 This sample represents a true type of hop.

Copyright © 2018 by Aromatic Plant Research Center (APRC). All rights reserved.
 The information contained in this document may not be used, published or redistributed, including online, without the prior written consent of APRC.

Reviewed by: Ambika Poudel