

In and Around Naples

# Audubon Corkscrew Swamp Sanctuary

Copyright © Paul Pacter

www.PaulVisits.com

**What:** Visitor center:  
Check in. Exhibits.  
Nature Store.



**Boardwalk:** 13,000 acres of wetlands. 2.25 miles of boardwalk through pine flatwood, wet prairie, marsh, and the largest old growth Bald Cypress forest in North America. Alligators, otters, deer, cottonmouth snakes, turtles, wading birds, owls, songbirds, raccoons, etc.

**Corkscrew Swamp – “Audubon Corkscrew Swamp Sanctuary”**

**Website:** [corkscrew.audubon.org/](http://corkscrew.audubon.org/)

**Where:** 375 Sanctuary Rd W, Naples 34120.

**Get There:** East on Immokalee Road. 15 miles East of I-75, turn left onto Sanctuary Rd. Follow signs.

**When:** Daily 8:00 am to 3:00 pm.

**Admission:** \$17. College students \$10. Children 6-14 \$6. Book online.



## Audubon Corkscrew Swamp Sanctuary

### WELCOME TO CORKSCREW SWAMP

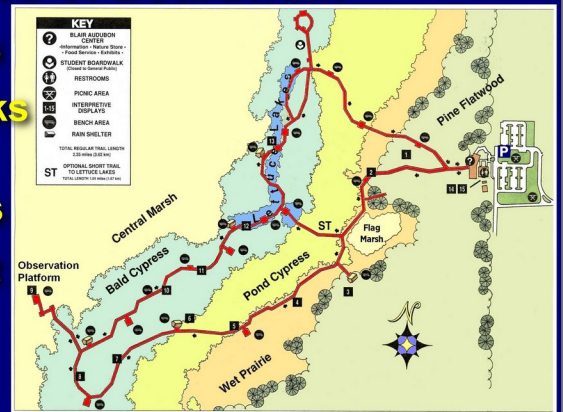
#### Planning Your Visit



"Most people don't need mosquito repellent."  
I DISAGREE. NEED repellent for other bugs.

## 2.2 Miles of Boardwalk

Benches  
Overlooks  
Rain  
Shelters  
Shortcut



## Audubon Corkscrew Swamp Sanctuary

### 2.2 miles of boardwalk.

Through pine flatwoods, marshes, swamps, stands of ancient cypresses, lettuce lakes.

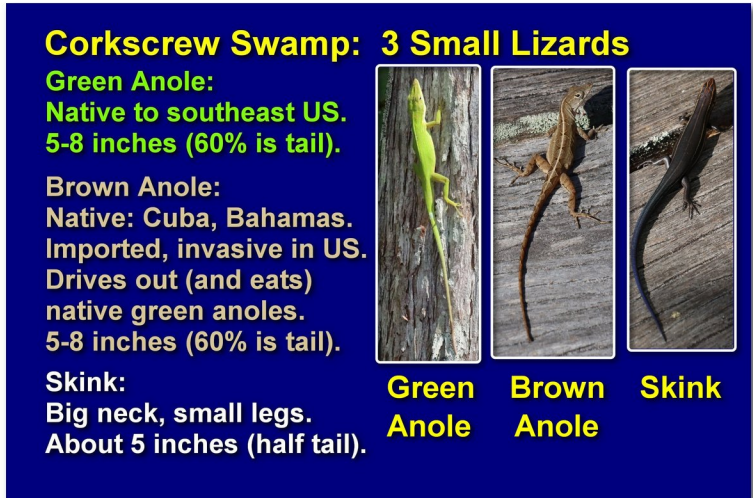
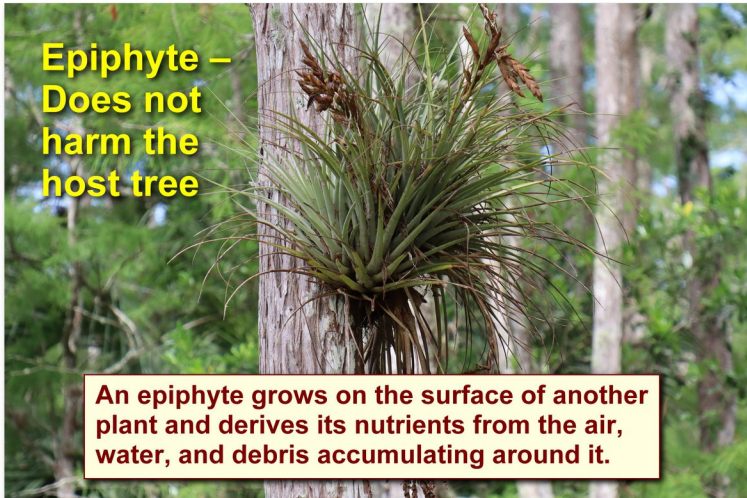
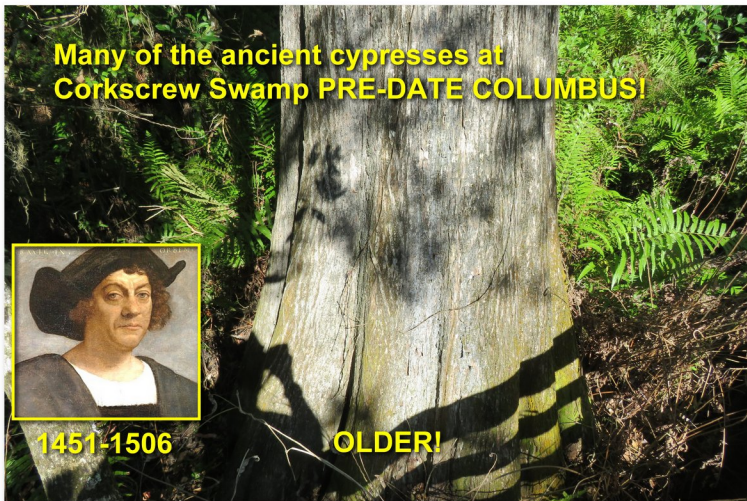
## Audubon Corkscrew Swamp Boardwalk and Pond Cypress















Alligator at Corkscrew Swamp Sanctuary



Alligator Sunning - Corkscrew Swamp



Audubon Corkscrew Swamp  
Two Juvenile Alligators

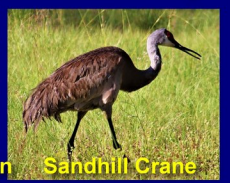
Several of the Many Birds at Corkscrew Swamp



Ibis



Yellow-crowned Night Heron



Sandhill Crane



Anhinga



Roseate Spoonbill



Barred Owl



Audubon Corkscrew Swamp  
Red-tailed Hawk and a Skink



Roseate Spoonbill



Audubon Corkscrew Swamp  
Wood Stork



Egrets, Ibises, Wood Storks, Spoonbills  
North Lettuce Lake - Corkscrew Swamp





**Audubon Corkscrew Swamp had a lot of damage from Hurricane Irma**



**Lookout Over the Central Marsh**



**View of Marshland from Lookout  
Audubon Corkscrew: 13,000 acres = 20 sq miles.  
Wetlands. Wildlife sanctuary.**



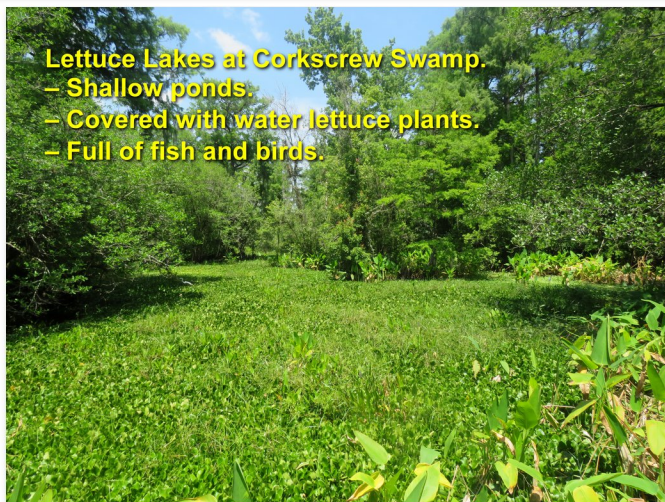
**Time for a QUIZ!**

1. What kind of plant?

2. What kind of bird?

4. What kind of bird?

3. What kind of reptile?



**Lettuce Lakes at Corkscrew Swamp.**  
– Shallow ponds.  
– Covered with water lettuce plants.  
– Full of fish and birds.



**Alligator - South Lettuce Lake**



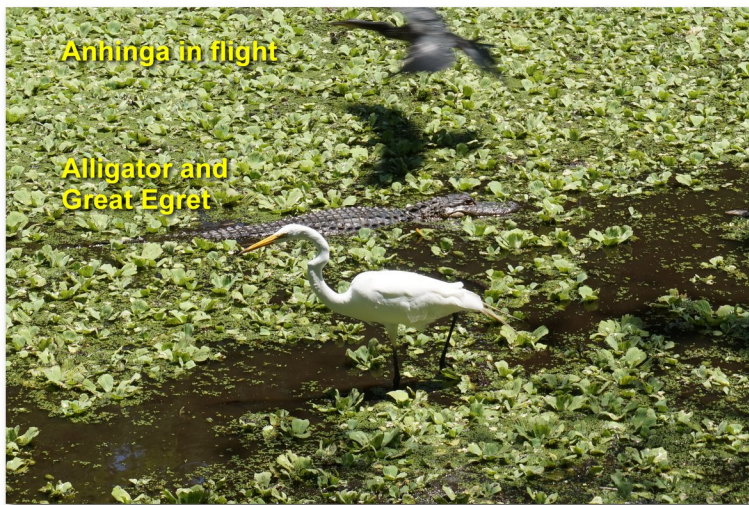
**Red-Bellied Cooter Turtle**

- Herbivorous.
- Up to 14" long.
- Lifespan 30 years.



**Alligator in a Lettuce Lake**



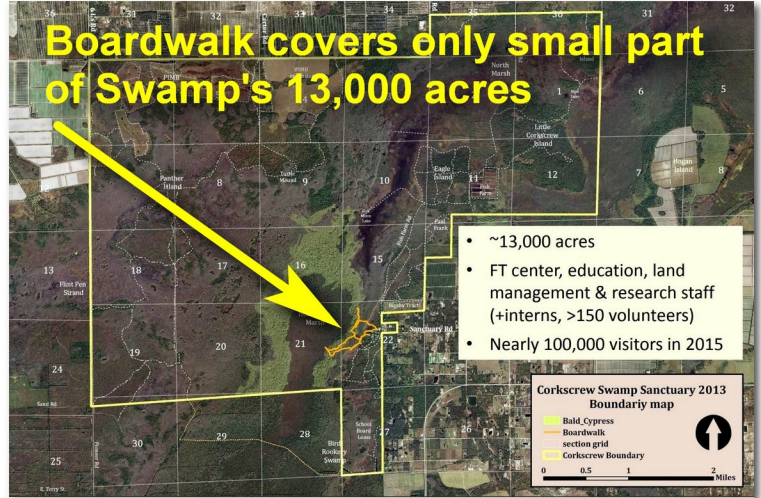




**Raccoon in a Tree Searching for Berries**



**Bing Image of the Day  
November 18, 2021**



**Back-Country Tour by Swamp Buggy**



**Back-Country Restoration Area**  
Controlled burning and cutting.

- Reduces wildfire risk.
- Eliminates invasives.
- Improves water flow.
- Opens area to migratory birds.



**Corkscrew Swamp Back-Country  
Wild Boar**



**Red-Shouldered Hawk**





