



Collier-Seminole State Park

Website: www.floridastateparks.org/parks-and-trails/collier-seminole-state-park

Where: 20200 Tamiami Trail E., Naples
Another entrance at Old Marco Road.

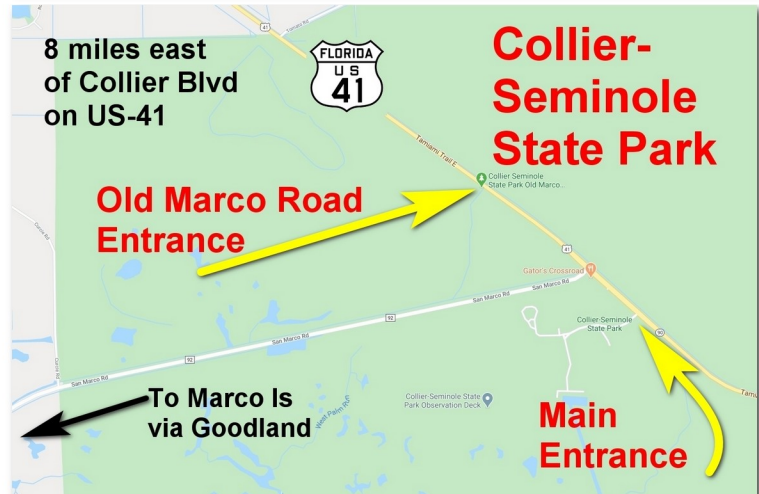
Get There: US-41 Tamiami Trail East, 8 miles east of Collier Blvd/SR-951.

When: 5am to sunset.

Admission: \$5 per vehicle, or annual pass.

What: 7,271-acres in one of the largest mangrove swamps in the world.

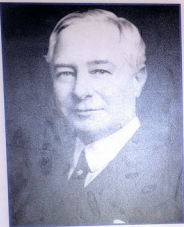
- Wide variety of wildlife and vegetation typical of Florida's Everglades.
- Park includes one of three original stands of royal palm in Florida, co-existing with large areas of mangrove swamp.
- Camping, boat rentals, bicycling, hiking.
- Observation Deck.



Barron Collier's Impossible Dream Building the Tamiami Trail - 1920s

The Dream

Barron Collier came to Florida in 1911 and fell in love with the beauty of the area. This region was Florida's last frontier and its potential for development awakened a dream of bringing people to this tropical paradise.



Collier was born in Memphis, Tennessee. At the age of 20, he began a career in streetcar advertisement that would make him a millionaire. By the early 1920s his wealth enabled him to purchase over 900,000 acres in South Florida that would become Collier County.

The Challenges

In Collier's time, most people traveled to South Florida by rail. The coming of the automobile prompted schemes to connect cities and towns by highways. In 1915 a highway was planned from Tampa to Miami. Each county along the route was responsible for funding construction in its jurisdiction.



Lee county, which included Ft. Myers, Naples and land further south, soon ran out of money for the project. The difficulty and cost of building a road across the Everglades had been underestimated. Many said it was impossible! Barron Collier offered to fund the highway construction across the Everglades if a new county was created and named after him.

The Achievement

The 50-mile section of road across the Everglades took four years to complete. Workers built over a mile a month. The Bay City Walking Dredge located here was one of the machines used to help build the road. In 1928, the 273-mile Tampa to Miami road (Tamiami Trail) officially opened.



The Tamiami Trail completed, Collier envisioned developing a national park here, but failed to rally support for his idea. The land first became a county park and then in 1947, a state park. Collier-Seminole State Park represents a part of the tropical paradise that Collier loved.

Bay City Walking Dredge

The park is the site of a **National Historic Mechanical Engineering Landmark**, the last existing Bay City Walking Dredge.

Built in 1924, it was used to build the Tamiami Trail Highway (US-41) through the Everglades and Big Cypress Swamp, linking Tampa and Miami.

Opened southwest Florida to travelers.

Bay City Walking Dredge - 1924



Bay City Walking Dredge - 1924 Dredge One Mile Per Month

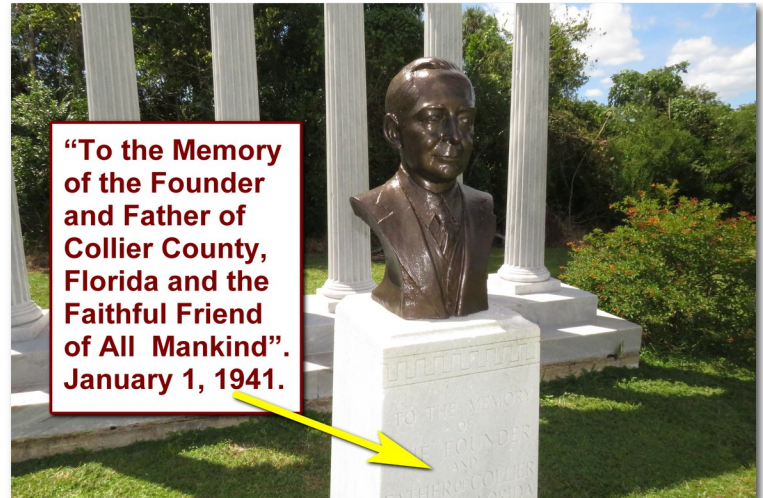


Tamiami Trail Finally Opens - 1928



BARRON COLLIER MEMORIAL

IN THE 1920'S BARRON COLLIER OWNED A MILLION ACRES. THIS SPOT WAS A SMALL HARDWOOD FOREST KNOWN AS ROYAL PALM HAMMOCK BECAUSE OF A MAGNIFICENT STRAND OF NATIVE ROYAL PALM TREES. COLLIER RESERVED 150 ACRES HERE FOR WHAT HE HOPED TO HAVE DESIGNATED "LINCOLN-LEE" NATIONAL PARK. THOUGH COLLIER ADDED ENOUGH ADDITIONAL LANDS FOR A NATIONAL PARK, THE FEDERAL GOVERNMENT DID NOT ACCEPT. THE LAND BECAME A COUNTY PARK AND WAS TURNED OVER TO THE STATE IN 1944.



"To the Memory of the Founder and Father of Collier County, Florida and the Faithful Friend of All Mankind". January 1, 1941.

Barron Collier Memorial Collier-Seminole State Park



Dugout Canoe - Carved from a Cypress Tree Transportation through the Everglades



Collier-Seminole State Park Blackwater River Kayaking and Canoeing



Brackish water (mix of salt and fresh) Collier-Seminole State Park Gators are typically fresh water animals



University Kayaking Group



Collier-Seminole State Park has a boat ramp into the Blackwater River



Collier-Seminole State Park
Canoe and Kayak Rentals
Bicycles Too



Collier-Seminole State Park
Blockhouse - 1940



Collier-Seminole State Park
Salt Marshes



Collier-Seminole State Park
Salt Marshes



Apple Snail - Freshwater
Often used in aquariums



Collier-Seminole State Park
Vulture



Monitoring Water Quantity and Quality
Collier-Seminole State Park





**Monitoring Panthers and Other Wildlife
Collier-Seminole State Park**



**Collier-Seminole State Park
Raccoon Tracks**



**Collier-Seminole
State Park
Campsites
October 2021**

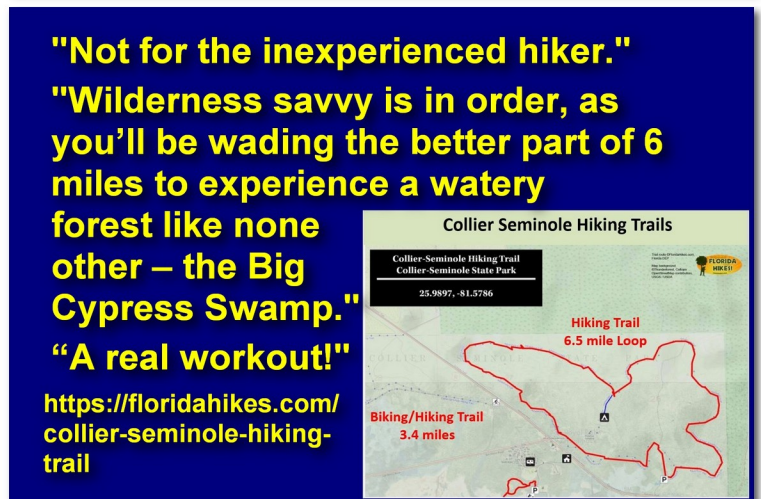
**All the campers seem to
be in trailers, not tents**



**Collier-Seminole State Park
Handicap Canoe and Kayak
Launching**



**Collier-Seminole State Park
Handicap Canoe and Kayak Launching**



**"Not for the inexperienced hiker."
"Wilderness savvy is in order, as
you'll be wading the better part of 6
miles to experience a watery
forest like none
other – the Big
Cypress Swamp."
"A real workout!"**

**[https://floridahikes.com/
collier-seminole-hiking-
trail](https://floridahikes.com/collier-seminole-hiking-trail)**



HISTORIC OLD MARCO ROAD

THIS ABANDONED ROAD BED WAS THE FIRST ROAD IN THE AREA FOR AUTOS. BUILT AROUND 1916 IT RAN FROM ROYAL PALM HAMMOCK TO MARCO JUNCTION AT SHELL ISLAND ROAD. FURTHER TRAVEL TO MARCO ISLAND WAS BY FERRY.

**Old Marco Road Entrance to
Collier-Seminole State Park**



**Collier-Seminole State Park
Hiking Along Old Marco Road**