

In and Around Naples
**A Series of Presentations
 for the Collier County Library
 by Paul Pacter**

**Audubon Corkscrew
 Swamp Sanctuary**

Copyright © Paul Pacter
 All Rights Reserved

www.paulvisits.com

**Corkscrew Swamp – “Audubon
 Corkscrew Swamp Sanctuary”**

Website: corkscrew.audubon.org/

Where: 375 Sanctuary Rd W, Naples
 34120.

Get There: East on Immokalee Road.
 15 miles East of I-75, turn left onto
 Sanctuary Rd. Follow signs.

When: Daily 8:00 am to 3:00 pm.

Admission: \$17. College students \$10.
 Children 6-14 \$6. Book online.

What: Visitor center:
 Check in. Exhibits.
 Nature Store.



Boardwalk: 13,000 acres of wetlands. 2.25
 miles of boardwalk through pine flatwood,
 wet prairie, marsh, and the largest old
 growth Bald Cypress forest in North
 America. Alligators, otters, deer,
 cottonmouth snakes, turtles, wading birds,
 owls, songbirds, raccoons, etc.



Audubon Corkscrew Swamp Sanctuary

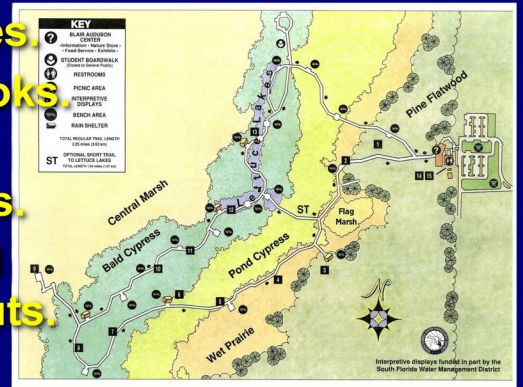
**WELCOME TO
 CORKSCREW SWAMP**
Planning Your Visit



**"Most people don't need mosquito repellent."
 I DISAGREE. NEED repellent for other bugs.**

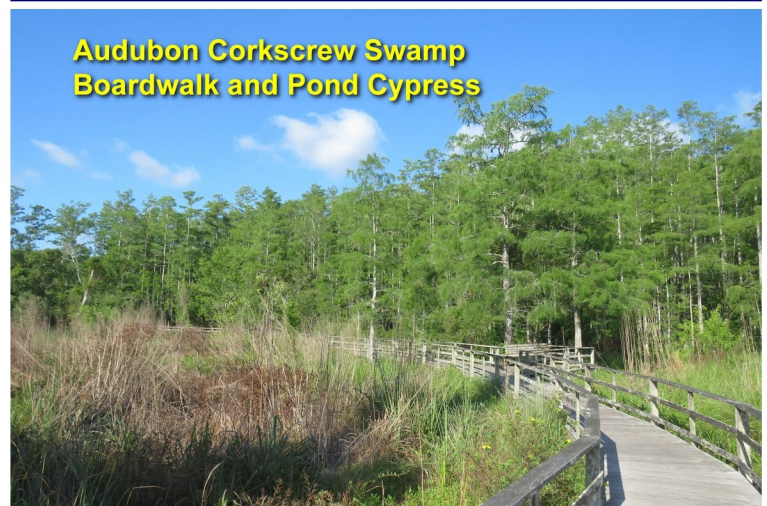
2.2 Miles of Boardwalk

- Benches.
- Overlooks.
- Rain shelters.
- Several shortcuts.



Audubon Corkscrew Swamp Sanctuary
 2.25 Miles of Boardwalk
 Through pinewood, marshes, stands of
 ancient cypress, lettuce lakes

**Audubon Corkscrew Swamp
 Boardwalk and Pond Cypress**



At that same place on the boardwalk in October, a spectacular sunflower display



Corkscrew Swamp Boardwalk
Across the Prairie to the Cypresses - May
Cypress Needles Are Green - Summer



Corkscrew Swamp Boardwalk
Across the Prairie to the Cypresses - November



Cypress is a conifer. But its needles change color and fall off each autumn.



Two kinds of cypress trees:
Pond cypress **Bald cypress**
40-80' tall, Max 20' wide, tapered shape. 70-130' tall, 20-30' wide, Oval shape.



Audubon Corkscrew Swamp
Wet Prairie (Marsh)



Audubon Corkscrew Swamp
Alligator Flag (Plant) Marsh



Corkscrew Swamp Sanctuary has the largest old-growth bald cypress forest left in the entire US.

- Related to west coast giant redwoods.
- Some in Sanctuary > 100 feet tall.
- 60 bald cypresses in the Sanctuary are at least 17 feet circumference.
- One measures 24 feet around.
- Some are over 535 years old.

Many of the ancient cypresses at Corkscrew Swamp PRE-DATE COLUMBUS!



1451-1506

OLDER!

Several of the Many Flowers at Corkscrew Swamp



Swamp Lily



Buttonbush



Elderberry



Virginia Iris



Cardinal Airplant



Pickerelweed

Bromeliad
"Air Plant"
or "Epiphyte"

An epiphyte grows on the surface of another plant and derives its moisture and nutrients from the air, rain, water, or from debris accumulating around it.

Corkscrew Swamp: 3 Small Lizards

Green Anole:
Native to southeast US.
5-8 inches (60% is tail).



Green Anole

Brown Anole:
Native: Cuba, Bahamas.
Imported, invasive in US.
Drives out (and eats) native green anoles.
5-8 inches (60% is tail).



Brown Anole

Skink:
Big neck, small legs.
About 5 inches (half tail).



Skink

Eastern Lubber Grasshopper
Cannot Fly - Harmless
Up to 3 inches



Dolomedes
Fishing Spider
Pregnant -
Green Egg Sac



Eastern gray squirrel.
Scatter-hoarders.
Several thousand caches per season, each location remembered!



Great Egrets

Alligator

Alligator:
Rounded snout.
Dark gray color.
No teeth show when jaw is closed.
Crocodile:
Pointed snout.
Brownish color.
Teeth protrude when jaw is closed.





Alligator at Corkscrew Swamp Sanctuary



Alligator Sunning - Corkscrew Swamp



Audubon Corkscrew Swamp
Two Juvenile Alligators



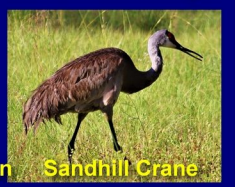
Several of the Many Birds at Corkscrew Swamp



Ibis



Yellow-crowned Night Heron



Sandhill Crane



Anhinga



Roseate Spoonbill



Barred Owl



Audubon Corkscrew Swamp
Red-tailed Hawk and a Skink



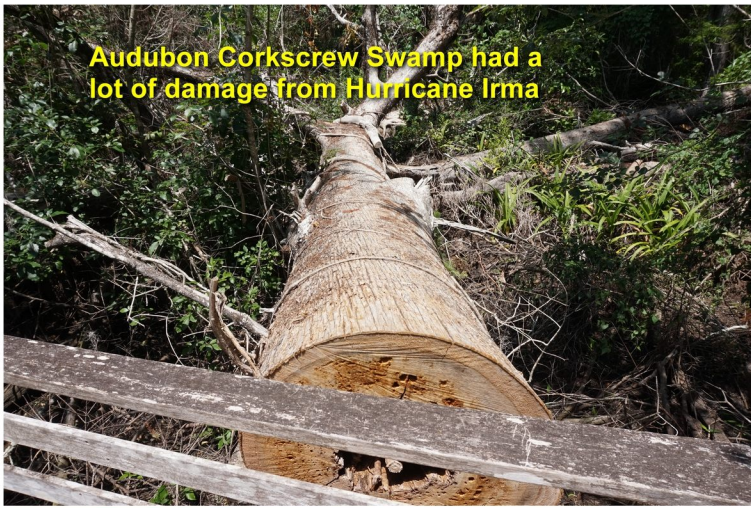
Roseate Spoonbill



Audubon Corkscrew Swamp
Wood Stork



Egrets, Ibises, Wood Storks, Spoonbills
North Lettuce Lake - Corkscrew Swamp



Audubon Corkscrew Swamp had a lot of damage from Hurricane Irma



Lookout Over the Central Marsh



**View of Marshland from Lookout
Audubon Corkscrew: 13,000 acres = 20 sq miles.
Wetlands. Wildlife sanctuary.**



Time for a QUIZ!

1. What kind of plant?

2. What kind of bird?

4. What kind of bird?

3. What kind of reptile?



Lettuce Lakes at Corkscrew Swamp.
– Shallow ponds.
– Covered with water lettuce plants.
– Full of fish and birds.



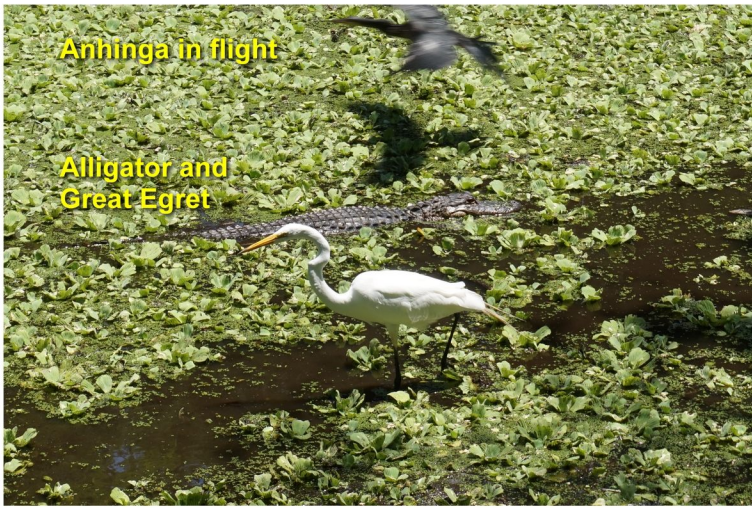
Alligator - South Lettuce Lake



Red-Bellied Cooter Turtle
– Herbivorous.
– Up to 14" long.
– Lifespan 30 years.



Alligator in a Lettuce Lake



Anhinga in flight

Alligator and Great Egret



Alligator



Corkscrew Swamp
Sitting in the Sun to Get Warm



Corkscrew Swamp - River Otter

Good hearing and sense of smell.
But poor vision. Whiskers help guide.



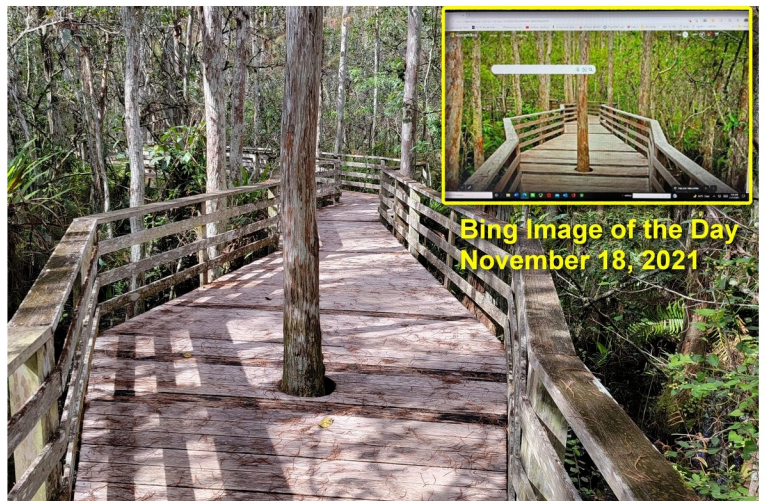
Adult and Juvenile Water Snakes



Raccoon on Corkscrew Swamp Boardwalk



Raccoon in a Tree Searching for Berries



Bing Image of the Day
November 18, 2021

Southern Live Oak Tree



Resurrection Ferns - turn brown and "die" in dry season but come back to life with rain.

**Corkscrew Swamp
Many Alligators Sunning
Spring 2023**

