



This is my #3 Thailand presentation for Collier Library.

- This one covers: Chiang Rai and Mae Salong.
- Presentation #1: Bangkok and Ayutthaya.
- Presentation #2: Chiang Mai and Lamphun.



Brief History of Thailand

- Before 1238: Collection of city-states with their own kings.
- 1238 United by King Sri Indraditya.
- 1238 to 1700s prosperity.
 - 1700 Ayutthaya is largest city in the world!
- 1767 Conquered by Burma.
- 1782 Kingdom reunited.
- 1932 Constitutional monarchy.

Political History of Thailand

- 1238 to 1932 Absolute monarchy. No parliament.
- 1932 Democratic revolution. First constitution plus monarchy.
- 1933 Uprisings by communists, poor, students. Military coup.
- 1932 to today: 20 constitutions each following military coups.

US has generally supported the military coups because they brought stability.





Grocery store across from Guest House



Some of the sights in central Chiang Rai (many others not shown) and Baan Pordeedin Guest House



Monument to King Mengrai the Great Reigned 1262-1311 Founded Lanna Kingdom Founded Chiang Rai



Golden Clock Tower - 2008 Centre of Chiang Rai - Honours King Bhumbhol Designed by Chalermchai Kositpipat, who built the White Temple.



Sound and light shows nightly



Chiang Rai centre of town - Most sidewalks covered. - Lots of motor bikes. - Signs are not in English, but many people speak some English.



Chiang Rai "downtown"

Tuk-tuk taxi



Chiang Rai Overbrook Hospital Where the "Cave Boys" recuperated

In 1895, congregation of Overbrook Presbyterian Church in Philadelphia, sent money and a medical missionary to establish a hospital in Chiang Rai. Chiang Rai people named it Overbrook Hospital in thanks.



Many Thai boys become monks for at least several years. Intellectual and spiritual education.



Grocery store. Yes, there are supermarkets. But not in the centre of town. 7-11s and similar in town.



Chiang Rai Municipal Market

Mostly indoors. A maze of hundreds of shops.



Market shops sell everything, including:

- Produce
- Meat and fish
- Pastries
- Clothing
- Cosmetics
- Hardware
- Spices
- Decorative items
- Religious items



Chiang Rai Municipal Market Spices



Chiang Rai Municipal Market

Fried dough

Jewelry

Pastries

Apples



Thai Moon Cakes Remember: ๕ 33 = US\$ 1



Lunar New Year Decorations



Municipal Market Cakes and pastries



Municipal Market Glutinous Rice Pastries



Municipal Market Crabs and Prawns



Municipal Market Prawns



Municipal Market Chickens Liver



Municipal Market

Noodle Shop



Municipal Market Thai Sausage



Municipal Market

Tamarind

Papaya



Municipal Market Produce

Water spinach

Pea eggplant

Petai beans



Municipal Market Prepared desserts



Municipal Market Quail eggs



Mini-pineapples Just 30 US cents each

10



Municipal Market Crabs



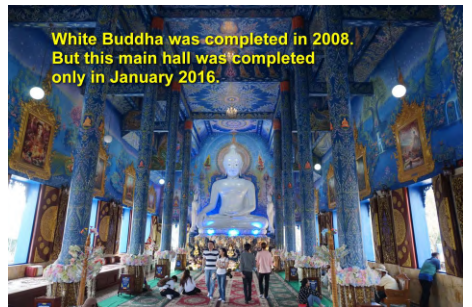
Municipal Market Chillies

70

80

70

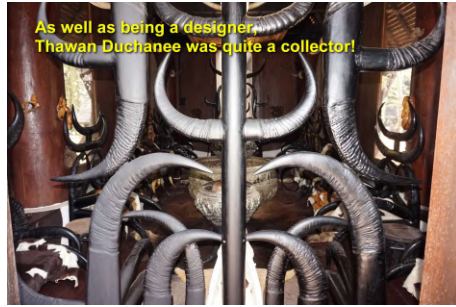






**Baan Dam Museum
Chiang Rai Black Temple**

Lanna temples are characterized by steeply pitched, multi-tiered roofs. Windows and doors are small, allowing little light in.



As well as being a designer, Thawan Duchanee was quite a collector!



Lanna style building



Thawan Duchanee had a good sense of humor. (There were many similar things.)



A small part of Thawan Duchanee's collection of "stuff" on display at the Baan Dam Museum.



**Baan Dam Museum
Lanna style buildings**



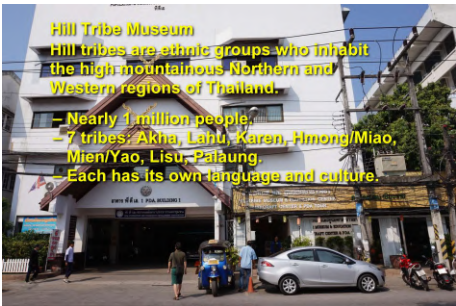
**Baan Dam Museum
Lanna style buildings**



Baan Dam Museum



**Baan Dam Museum
aka Black Temple
aka Black House Museum**



Hill Tribe Museum
Hill tribes are ethnic groups who inhabit the high mountainous Northern and Western regions of Thailand.

- Nearly 1 million people
- 7 tribes: Akha, Lahu, Karen, Hmong/Miao, Mien/Yao, Lisu, Palaung.
- Each has its own language and culture.



A section of the museum focuses on each Hill Tribe

In comparison:
Maori in New Zealand: 730,000
Aboriginals in Australia: 760,000
Hill tribe people in Thailand: 1,000,000



The Karen
One of the Hill Tribes



Hill Tribe Museum



Night Bazaar - Mostly prepared food and crafts
Outdoors, Every Night
Downtown Chiang Rai

ไนท์บาซาร์
Night Bazaar
清菜夜市



Chiang Rai Night Bazaar
Starts 7:00pm

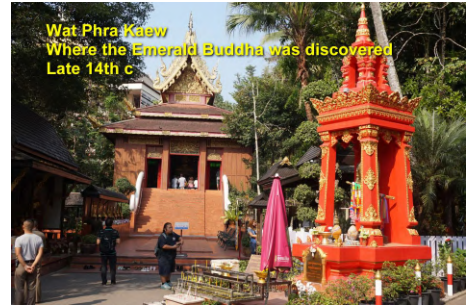




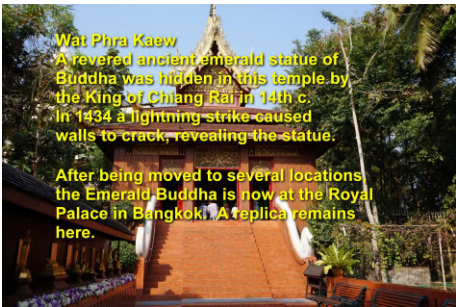
Reclining Buddha at Wat Phra Singh



Head Monk's Chair



Wat Phra Kaew
Where the Emerald Buddha was discovered
Late 14th c



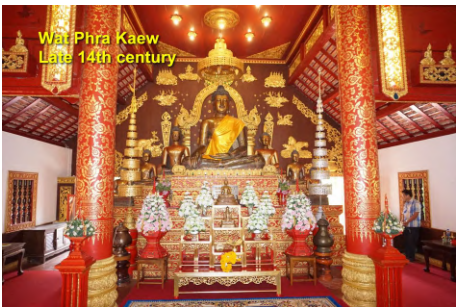
Wat Phra Kaew
A revered ancient emerald statue of Buddha was hidden in this temple by the King of Chiang Rai in 14th c. In 1434 a lightning strike caused walls to crack, revealing the statue.
After being moved to several locations the Emerald Buddha is now at the Royal Palace in Bangkok. A replica remains here.



Wat Phra Kaew
Réplica of the ancient Emerald Buddha.



Wat Phra Kaew
Late 14th century



Wat Phra Kaew
Late 14th century



Wat Phra Kaew
Museum



Wat Phra Kaew
Museum



Jade Buddha



Walk to Wat Prathat Doi



Walk to Wat Prathat Doi



Wat Phra That Doi
This golden chedi is said to have been built in 940 AD.



Wat Phra That Doi



Wat Phra That Doi





City Navel Pillar
Commemorates
founding of
Chiang Rai



Darunaman Mosque
Chiang Rai
2009



Chiang Rai
First Church
Christian
1914



Chiang Rai
First Church
Christian
1914

คริสตจักรที่ ๑
เวียงเชียงราย
ค.ศ. 1914
CHIANGRAI FIRST CHURCH



Ear Cleaning!



2-hour Thai Massage 350 Baht = US\$10.50



It was so good I went three different
times, two hours each



Oub Kham Museum - Chiang Rai
One man's lifetime effort to preserve
Lanna artefacts
Lanna Kingdom 1292-1558



Oub Kham Museum - Chiang Rai
Lanna artefacts



Oub Kham Museum
Lanna artefacts



Oub Kham Museum - Chiang Rai
Lanna artefacts



Oub Kham Museum - Chiang Rai
Lanna artefacts



Oub Kham Museum - Chiang Rai
Lanna artefacts



Rai Mae Fah Luang
Art and Cultural Park
West of city 3mi



Rai Mae Fah Luang (west of centre - need tuk
tuk) Art and Cultural Park

- Stunning landscaped gardens.
- Museums of Lanna artefacts.
- Many traditional teak Lanna pavilions that
have been relocated here.

A "hidden gem"



Rai Mae Fah Luang Gardens



Lanna Pavilion at Rai Mae Fah Luang



Rai Mae Fah Luang Lanna carving



Rai Mae Fah Luang Gardens



Rai Mae Fah Luang Museum of Lanna Art and Folk Items



Rai Mae Fah Luang Museum



Rai Mae Fah Luang Museum Teak Carriage



Rai Mae Fah Luang Museum - Erotic Monkeys



Wat Huai Pla Kung 3 mi NW of city centre



Wat Huai Pla Kung has - 9-floor pagoda. - 25-story Buddha (Guanyin). - 12 surrounding structures (this is one).



Wat Huai Pla Kung 9 stories Chinese style 2005



Wat Huai Pla Kung 9 story pagoda Naga Staircase



You can buy a bag of rice as a donation for the monks at the temple

Shoes off in Thai temples



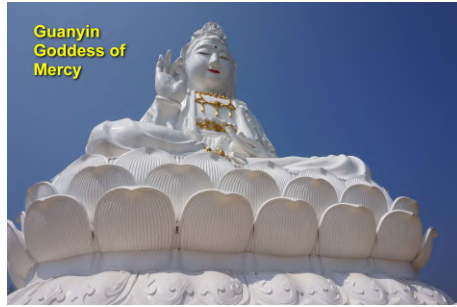
Interior of the 9-story pagoda



Statue of Guanyin Goddess of Mercy - 25 stories high. - Elevator 40 Baht. - Some construction is still not done.



Inside Guanyin's head



Guanyin Goddess of Mercy



Wat Huai Pla Kung View from base of Guanyin Statue



At Wat Huai Pla Kung, all meals are free for visitors. **ฟรี!**

เชิวยทาน ฟรี!
FOOD FREE / 免費



At Wat Huai Pla Kung, all meals are free for visitors! An example: Soup -- you choose the broth and other ingredients



Street Sign in Chiang Rai Our next visit is to Wat Jed Yod.



Wat Jed Yod Recent: 1944



Wat Jed Yod Chiang Rai



Wat Jed Yod Chiang Rai



Wat Klang Wiang In heart of Chiang Rai 1432 Very ornate Lanna style



Wat Klang Wiang



Wat Klang Wiang - Donation Bowls



Wat Klang Wiang Typically women may not step on stupas

ประเพณี
สุภาพสตรีไม่นิยมขึ้น
LADIES NO ENTRY

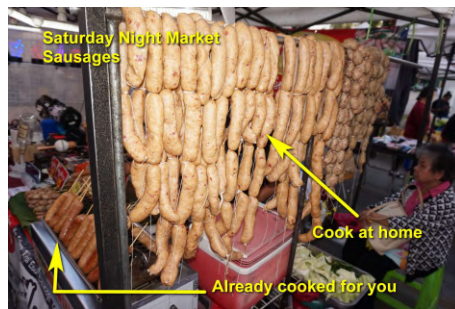


Wat Klang Wiang Stupa - 15th c



Wat Klang Wiang







Saturday Night Market
Fried fish



Saturday Night Market
Fish steamed in banana leaf



Saturday Night Market



Saturday Night Market



Looked beautiful but seemed out of place!



Saturday Night Market
Skewers - and some fruit too



Live CRICKETS! Take them home. Fry them up!



Or we can fry the crickets for you!



Saturday Night Market
Squids



Saturday Night Market
Roasted chickens



Saturday Night Market
Thai Salads



Saturday Night Market
Different kinds of fish in banana leaf



Traditional Lanna Musical Instruments



Saturday night Market
Making sugar cane juice



Unusual skewers!
Crocodile
Deer



The Story of Mae Salong - 1

- 1949 – Communists win Chinese Civil War. Nationalists (Kuomintang under Chiang Kai Shek) retreat to Taiwan.
- Except for two KMT regiments, which remained in Yunnan Province, China, fighting the Communists.
- 1950 – KMT regiments (12,000 troops led by General Tuan Shi-wen,) escape from China to Burma jungles.
- 1950-1961 – Burma army fought KMT soldiers to get them out of Burma. 2,000 fled to Taiwan.

The Story of Mae Salong - 2

- 1961 – Remaining 4,000 KMT retreat from Burma to northern Thailand Mae Salong. Thailand offers sanctuary and land in exchange for KMT fighting Communist insurgents in Thailand.
- To support themselves, KMT Chinese become opium growers and dealers.
- 1961-1982 – Fierce battles continued between KMT and Communist insurgents. KMT still led by General Tuan Shi-wen (died 1980).
- Area remained closed to visitors until 1980s.
- 1982 – Finally KMT soldiers give up their arms.



The Mountains of Mae Salong
Where KMT Chinese fled from Burma 1961

Mae Salong →



Chinese Martyrs' Memorial Museum
History of Kuomintang settlers of Mae Salong



Chinese Martyrs' Memorial Museum
History of Chinese settlers of Mae Salong



The Chinese refugees helped the Thai government fight against Thai communists 1940s and 1950s



King Bhumibol and Queen Sirikit greeting a wounded Chinese refugee

พระบาทสมเด็จพระเจ้าอยู่หัวและสมเด็จพระนาง



Mae Salong - monument to Chinese insurgents who died fighting communists



Mae Salong Guanyin Temple



Mae Salong Guanyin Temple



Mae Salong Guanyin Temple



Mae Salong Guanyin Temple Chedi (mausoleum monument)



Phra Boromathat Chedi Temple honoring the late Princess Srinagarindra (1900-1995) Mother of King Bhumibol



Phra Boromathat Temple honoring King Bhumibol's mother



Terraced Tea Plantations



Terraced tea plantation Mountains near Mae Salong



Terraced tea plantation



Terraced tea plantation



Oolong tea growing on terraces near Mae Salong



Bales of tea packed for shipping



Bales of tea packed for shipping



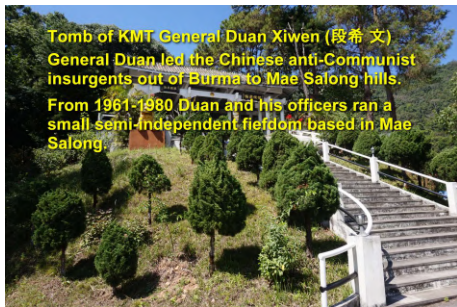
Pineapple plantation in the hills near Mae Salong



Pineapples



Pineapples



Tomb of KMT General Duan Xiwen (段希文)
General Duan led the Chinese anti-Communist insurgents out of Burma to Mae Salong hills.
From 1961-1980 Duan and his officers ran a small semi-independent fiefdom based in Mae Salong



View of Mae Salong from Tomb of KMT General Duan Xiwen



Tomb of General Duan (aka Tuan) Xiwen



Events in General Duan Xiwen's life



Mae Salong Village
Settled by Chinese anti-communist insurgents who had first fled to Burma



Mae Salong
Chinese village in northern Thailand



Mae Salong Market



Some sort of traditional Chinese
New Year Display



Thai cuisine:

- lightly prepared dishes.
- aromatic.
- spicy.

In 2017, seven Thai dishes were on a list of the "World's 50 Best Foods" (CNN Travel).

Some photos of Chiang Rai food:



