

In and Around Naples  
**A Series of Presentations**  
 for the Collier County Library  
 by Paul Pacter

**Everglades City  
 Everglades National Park  
 Gulf Coast Visitor Center**

Copyright © Paul Pacter  
 All Rights Reserved

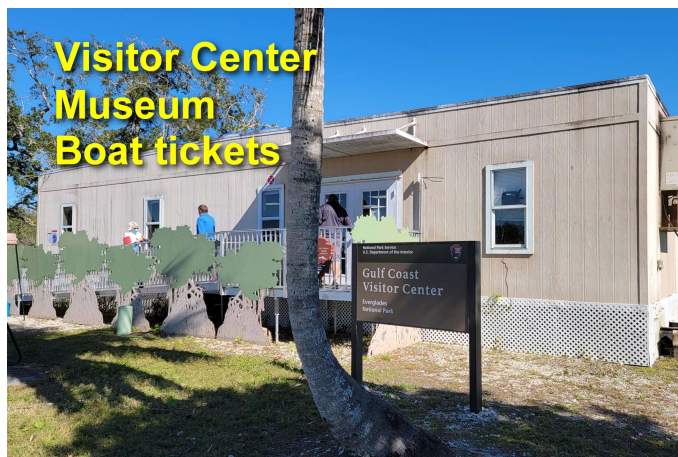
[www.paulvisits.com](http://www.paulvisits.com)



**Everglades National Park  
 Gulf Coast Visitor Center**  
 815 Oyster Bar Lane  
 Everglades City, Florida 34139  
 (239) 695-3311  
 Daily from 8:00 AM - 5:00 PM  
 Small museum. Walking and kayak tours.  
 Tickets for boat tour.  
 – Boat tour of 10,000 Islands - next slide.  
 – Departs hourly (if 6 or more people).

**Everglades National Park Gulf Coast Visitor Center**  
 Drive South through Everglades City on Copeland Blvd.  
 Visitor Center is opposite Ernest Hamilton Tower.

**Chokoloskee Bay Boat Tour**  
 Everglades Florida Adventures  
 (855) 793-5542  
<https://evergladesfloridaadventures.com/>  
 Adult \$40. Senior \$36. Children \$20.  
 (+vehicle entrance fee \$30.00 – but they do not ask.)  
 90-minute excursion across Chokoloskee Bay on a 45 ft passenger catamaran.  
 Into Indian Key Pass, and through the mangrove islands of Everglades National Park. Birds, dolphins, manatees.  
 Narrated by Ranger or Naturalist.



**Examples of Ranger Programs**  
 Fees apply

Information →

↑

**Today's Ranger Programs**

Ranger Guided Paddle Trip 2 1/4 - 2 hour  
 2 1/5 - 4 hour  
 Reservations REQUIRED

Scavenging By 2 1/5 - 7:30pm  
 the Bay! Reservations REQUIRED

Ranger Guided Boat Tour 10am  
 2pm

Nature Walk 3:00 PM

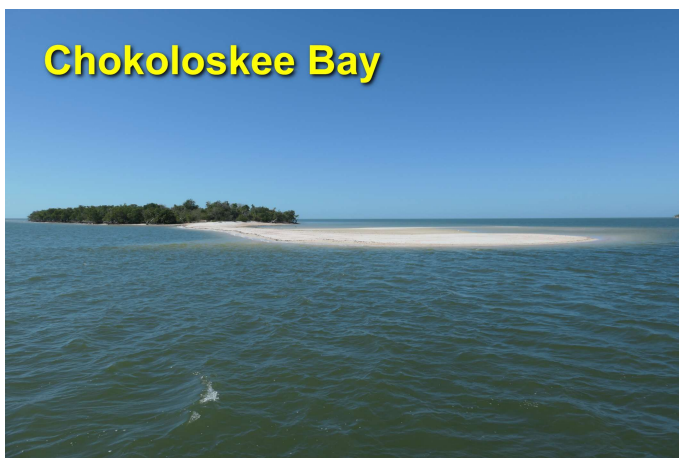
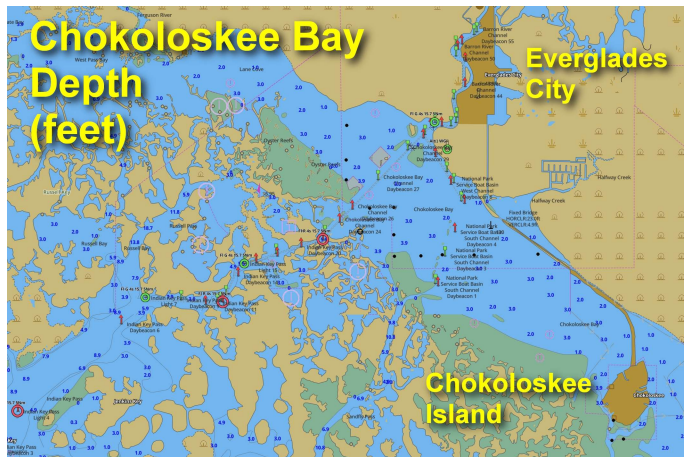
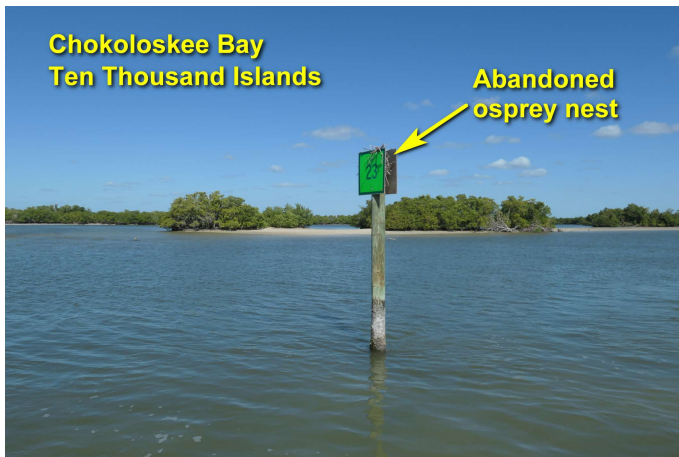
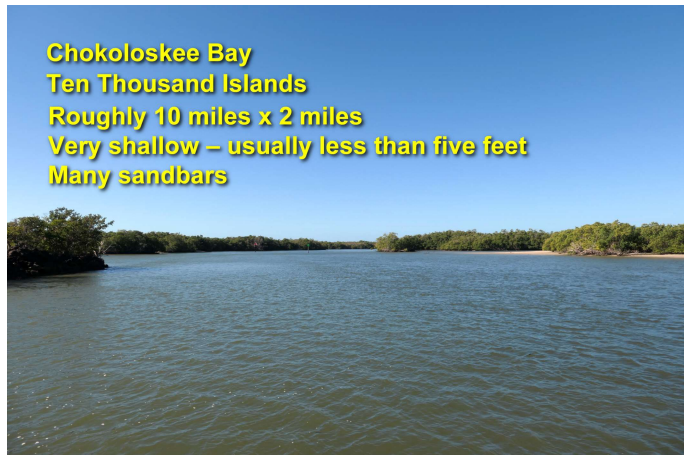
Riverine Chat with a Ranger 10:30am  
 4:15pm

**Small Museum at Visitor Center**

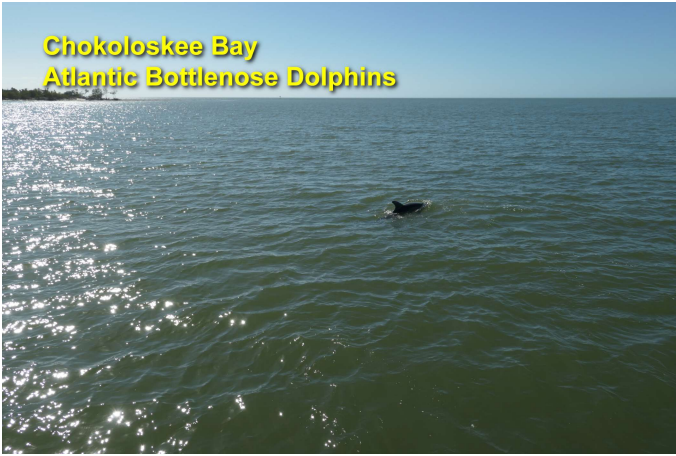
Sea Turtles

DO NOT DISTURB SEA TURTLE NESTS

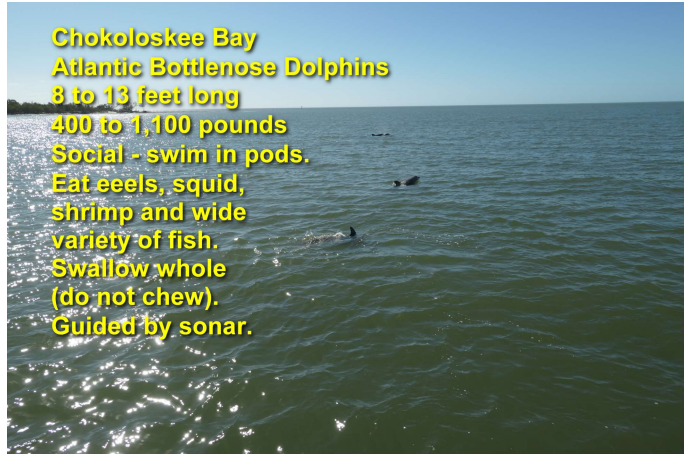
Sea Turtles of the Everglades



**Chokoloskee Bay  
Atlantic Bottlenose Dolphins**



**Chokoloskee Bay  
Atlantic Bottlenose Dolphins**  
8 to 13 feet long  
400 to 1,100 pounds  
Social - swim in pods.  
Eat eels, squid,  
shrimp and wide  
variety of fish.  
Swallow whole  
(do not chew).  
Guided by sonar.



**Curious. Following our boat.**



**Everglades National Park  
Chokoloskee Bay**

