

In and Around Naples  
A Series of Presentations  
for the Collier County Library  
by Paul Pacter

**Fakahatchee Strand  
Preserve State Park**

Copyright © Paul Pacter  
All Rights Reserved

[www.paulvisits.com](http://www.paulvisits.com)

**Fakahatchee Strand Preserve State Park**

**Website:** [www.floridastateparks.org/parks-and-trails/fakahatchee-strand-preserve-state-park](http://www.floridastateparks.org/parks-and-trails/fakahatchee-strand-preserve-state-park)

**Where:** Off SR-29 in Copeland, FL.

**Get There:** (1) I-75 to Exit 80 SR-29. South 14 miles on SR-29. Right on Janes Memorial Scenic Dr (paved part). (2) US-41 East of Collier Blvd 24 miles to SR-29. Turn left and go 3 miles on SR-29. Turn left on Janes Memorial Scenic Dr (paved part).

**When:** 8am to sunset.

**Admission:** \$3 per car.

**What:** Largest state park in Florida. "Florida's Amazon." Wild orchid capital of the US.

- **Big Cypress Bend Boardwalk.** Separately described.
- **Janes Memorial Scenic Drive.** 11-mile dirt road extending from the park visitor center in Copeland to Fakahatchee's border with Picayune Strand State Forest.



**Fakahatchee Strand Preserve State Park  
Florida's Largest State Park**



**Fakahatchee Strand Preserve State Park**



**Fakahatchee Strand Preserve State Park**



**Fakahatchee Strand Preserve State Park  
Lake Gloria**



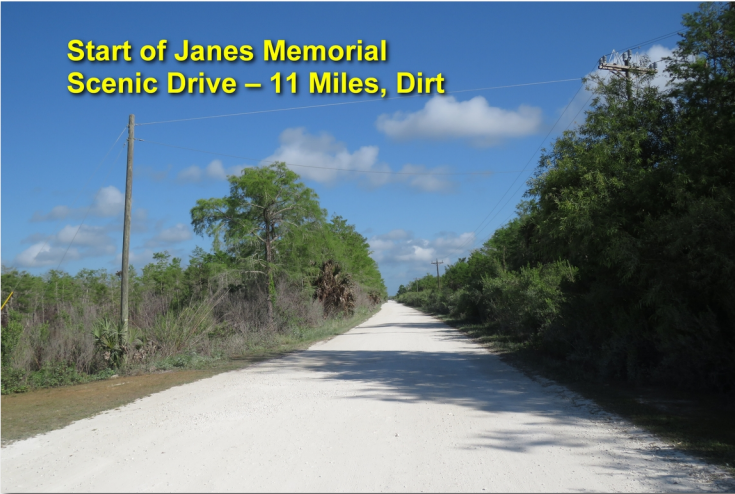
**Fakahatchee Strand Preserve State Park  
Copeland Tower**



**American Black Vulture**



**Start of Janes Memorial  
Scenic Drive – 11 Miles, Dirt**



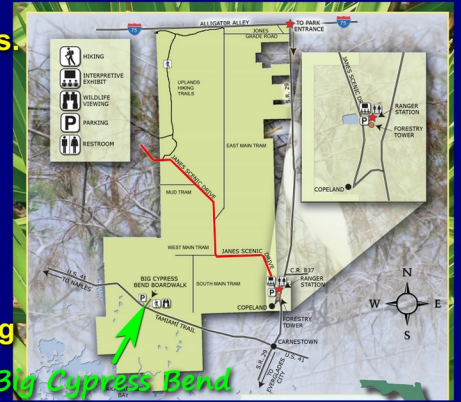
**Janes Scenic Drive  
11 mile dirt road.  
Ruts and potholes.**

**Goes through  
subtropical  
wilderness,  
swamp, prairie.**

**Along the road,  
basking alligators  
and snakes.**

**Hiking trails. Bring  
bug repellent.**

*Not for your pampered  
BMW or Mercedes!*



**Two main hiking trails (former logging roads):**

- **West Main Tram:** 4 miles down Janes from the visitor center.
- **East Main Tram:** 2 miles farther down Janes.

**Orchid and bromeliad capital of the USA: 44 native orchids and 14 native bromeliad species.**

**Fakahatchee Strand Preserve State Park  
Trees Full of White Ibis**



**White Ibis**



**Turkey Vultures**





**Turkey Vultures**



**Fakahatchee Strand Preserve State Park  
Lake Gloria**



**These were all in one place.  
Not sure what happened.**



**Fakahatchee Strand Preserve State Park**



**Fakahatchee Strand Preserve State Park**



**Fakahatchee Strand Preserve State Park  
Black Vulture**



**Eastern Lubber Grasshopper  
Up to 3" in Size.  
Harmless.  
Cannot fly.**



**2-Pound Largemouth Bass – Lake Gloria**