

Taiwan Facts:
Population: 24,000,000
Area: 14,000 sq mi (FL = 66,000)
Capital: Taipei
Time Zone: UTC+8
 Same as Mainland China
Language: Taiwanese Mandarin
Writing: Traditional characters

GDP 2018 Nominal: \$25,534
GDP 2018 PPP: \$52,960
Unemployment: 3.8%

Main export partners	Main import partners
Mainland China 26.3%	Mainland China 19.1%
Hong Kong 13.7%	Japan 17.6%
United States 12.0%	United States 12.5%
Japan 7.0%	European Union 10.6%
European Union 8.8%	South Korea 6.3%



Some more facts:
President: Tsai Ing-wen
Ethnicity: 95% Han Chinese
Currency: New Taiwan dollar NT\$31 = US\$1
Drive: On right
Religions: Buddhist 35%, Taoist 33%, Non-religious 19%, Christian 4%, Others 9%

Why NEW Taiwan Dollar?
 Because during Japanese occupation in WW2, inflation was rampant. OLD Taiwan Dollar lost most of its value.
1949: 40,000 OLD Taiwan Dollars became 1 NEW Taiwan Dollar.



Brief History of Taiwan - 1
 17th c and before: Taiwan was aboriginal.
 1620s: Dutch and Spanish settlements.
 1662-1682: Independent Kingdom of Tungning.
 1683: Qing dynasty annexed Taiwan. Thereafter Taiwan was part of China.

Brief History of Taiwan - 2
 1895 Japan defeated China in First Sino-Japanese War. China ceded Taiwan to Japan by treaty.
 1895-1945 Japan ruled Taiwan as a colony.
 1927-1950 Meanwhile, China Civil War. Republicans (Chiang Kai Shek) vs Communists (Mao Zedong).

Japanese Occupation of Taiwan 1895-1945
 1600s-1800s Japan tried several times to obtain Taiwan by force. Unsuccessful.
 1871 Japanese ship with 69 people washed ashore by storm in Southern Taiwan (independent kingdom not controlled by Chinese Qing). Taiwanese killed most of them. Japan demanded compensation. Taiwan (Qing) refused.
 1874 Japan sent 3,000 soldiers to Taiwan. Qing sent soldiers to Taiwan. Standoff for 20 years.
 War finally happened 1894-1895. China lost. 50,000 total casualties. China ceded Taiwan to Japan.
 – Some call 1895-1945 the "Colonial Period".
 – Others call it "Occupation Period".

Brief History of Taiwan - 3
 World War 2 Cut short Japan's harsh efforts to impose its culture, language, names in Taiwan.
 – 1945 Japan surrendered.
 – 300,000 Japanese expelled from Taiwan.
 – Japan renounced sovereignty over Taiwan.
But to this day it is debatable who got sovereignty over Taiwan.

Brief History of Taiwan - 4
 1927-1950 While WW2 battles raged in China, China was in a Civil War!
 – **Republicans under Chiang vs. Communists under Mao.**
 – **Estimated 15,000,000 casualties.**
 – **1949 Communists chased Chiang and his army onto Taiwan.**
 – **From Taiwan, Chiang proclaimed he was still leader of all of China.**

Brief History of Taiwan - 5 Sovereignty over Taiwan

- A few say Japan's 1945 surrender created a new country: Taiwan.
- PRC says Communist victory in 1949 gave it control of all of historic China, including Taiwan.
- Others say no. In 1949 ROC had control of Taiwan (and a few other islands) and it remains a separate Republic of China.

Brief History of Taiwan - 6

- 1971: ROC lost its United Nations seat as "China" - replaced by PRC.
- Jan 1, 1979: US broke relations with ROC. Embassy closed.
- But maintains relations through a "representative office".
- Formed a nonprofit to issue visas, accept passport applications, and assist Americans in Taiwan.

Only 17 countries today recognize ROC:

- | | |
|--------------------|------------------------------|
| Africa | Caribbean |
| - Eswatini | - Haiti |
| - (Swaziland) | - Saint Kitts and Nevis |
| Europe | - Saint Lucia |
| - Holy See | - Saint Vincent & Grenadines |
| Oceania | Central America |
| - Kiribati | - Belize |
| - Marshall Islands | - Guatemala |
| - Nauru | - Honduras |
| - Palau | - Nicaragua |
| - Solomon Islands | South America |
| - Tuvalu | - Paraguay |

57 more countries have "representative offices" that function like embassies.

Blue = Countries with representative offices that function like embassies.

Green = Countries that recognize Taiwan as the rightful government of China.



Today, 148 countries plus Hong Kong accept the ROC passport for entry without need for a visa.

Some of the 148 do not stamp the ROC passport to avoid implying that ROC is a "country".

Mainland China (PRC) does not accept ROC passport for entry. But ROC "citizens" can get a special "Mainland Travel Permit" to travel to PRC. And vice versa.

ROC's traditional political and military allies are:

- United States of America.
- Canada.
- Japan.
- Australia.
- New Zealand.

Military Budgets

- USA \$575 billion
- China \$131 billion
- Russia \$69 billion
- UK \$57 billion
- Japan \$47 billion
- India \$40 billion
- Taiwan \$11 billion

"The government of President Tsai Ing-wen (centre), has approved a 5.6% increase in military spending next year, to US\$11.34 billion, with plans for further incremental rises over the next 10 years, mainly in response to threats from mainland China." South China Morning Post 15 Apr 2019.

In 2005, PRC (Mainland China) passed a controversial Anti-Secession Law" stating conditions for military invasion of Taiwan:

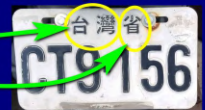
- Change of ROC name to eliminate the word "China".
- Political action by Taiwan to demonstrate separation from China.
- If all possibility of peaceful unification is lost.

That's the status quo today.

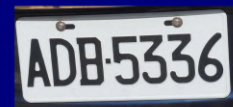
Even License Plates are political!
Prior to 2008 Taiwan license plate said "Taiwan Province".

Taiwan

Province (Sheng)



But reference to Taiwan Province is now removed.



But Taiwan government argued:

- We were NOT acknowledging that Taiwan was a province of mainland China.
- Rather, by saying "Taiwan Province (Sheng)" we were saying that we are the rightful government of China and Taiwan is one of our provinces.
- Nonetheless, to avoid the issue "Taiwan Province" was removed from the license plate.

Taiwan's 2020 Presidential Election

Two main parties:

- Incumbent: Democratic Progressive Party (DPP). Traditionally pro Taiwan independence.
- Historically main party: Kuomintang (KMT). Also nationalist.

But now commentators speak of a "massive gravity shift toward China" in both parties.

Leading candidates:

- DPP: Foxconn chief Terry Gou (Foxconn is TW company that makes 40% of electronic devices sold worldwide. 500,000 employees in China.)
- KMT: Han Kuo-yu, popular mayor of Kaohsiung. US\$5 billion trade deal with China.

Air China vs China Airlines...



What's the difference?

Air China

Mainland China
AIR CHINA
中國國際航空公司

Code CA
Planes in service 405

Affiliation:
Star Alliance



China Airlines

Taiwan (Republic of China)

Code CI
Planes in service 88
service B8

Affiliation: Skyteam



Taipei

One building stands out:
Taipei 101.
We will visit.



New Taiwan Dollar

Currency of Taiwan since 1949, when it replaced the Old Taiwan dollar, at a rate of 40,000 old dollars per one new dollar. Inflation under Japanese rule had made the old dollar nearly worthless.



How to write "Taiwan" in Chinese:

Simplified 台湾 Used Mainland China

Traditional 台灣 Used HK and Taiwan

Telephone Country Codes:

Taiwan 886

Mainland China 86

Hong Kong 852

Macau 853

TAIPEI

Population 2.7 million

Taipei Facts 1

Population:

– Taipei City itself: 2,704,810.

– Taipei-New Taipei-Keelung metropolitan area: 7,047,559.

Area:

– Taipei City itself: 105 sq miles.

– Metro Area: 440 sq miles.

Political, economic, educational, and cultural center of Taiwan.

Taipei Facts 2

– Settled 1709 by Han Chinese immigrants from mainland.

– 1887 Qing made Taipei capital of the Fukien-Taiwan Province.

– 1895 Japanese control of Taiwan.

– 1945 Japanese surrender. China (KMT under Chiang Kai Shek) control.

– 1947 February 28 incident. Harsh KMT rule until 1960s.

– Since WW2 strong economic growth.

Humid Sub-tropical Climate

Month	Climate Data for Taipei												
	Jan	Feb	Mar	Apr	May	Jun	Jul	Aug	Sep	Oct	Nov	Dec	Year
Record high (°F)	93	89	95	97	101	102	102	103	102	98	94	89	103
Average high (°F)	66	67	72	78	85	90	94	93	88	82	76	69	80
Daily mean (°F)	61	62	65	71	77	82	85	85	81	76	71	64	73
Average low (°F)	57	58	60	66	72	76	79	79	77	72	67	60	69
Record low (°F)	32	32	35	41	50	60	67	66	66	56	50	34	35
Average rainfall (inches)	3	7	7	7	9	13	10	13	14	6	3	3	95
Average rainy days (≥ 0.1)	14	15	16	15	15	16	12	14	14	12	12	12	166
Average relative humidity (%)	79	81	80	78	77	77	73	74	76	75	75	75	77
Mean monthly sunshine hours	81	71	90	93	114	122	179	189	154	124	99	91	1405

Taipei Metro

– 5 lines.

– 117 stations.

– 800 million passengers a year.

– Opened 1996



Taipei Metro



Taipei Metro



Taipei Metro



Stop Sexual Harassment



Earthquakes

Taiwan is in a seismically active zone, on the Pacific Ring of Fire.

Date	Deaths	Injuries
2019 thru Apr		17
2018	17	277
2017		4
2016	117	550
2013	6	115
2010		96
2009		6
2004		2
2002		8
2000		5
1999	2,415	

42 active faults in Taiwan.
Injuries in past 20 years:

National Palace Museum

In the hills about 3 miles north of central Taipei



National Palace Museum

Largest collection of Chinese artifacts and artwork in the world.

Nearly 700,000 items:

– Bronzes, statues, jade carvings, calligraphy, lacquerware, porcelains, paintings, and other historical pieces.

– Collection covers 8,000 years of Chinese history. From Neolithic to modern.

Most artifacts were collected by Emperors.

Even with a huge, expanded building, only a fraction of the collection is on display:

– No more than 10,000 items at any one time.
– Rotated several times a year.

National Palace Museum History – 1

1925 – National Palace Museum established in Forbidden City by China's new Republican government. To hold former Imperial collections.

1931 – Japan invades China.

1933 – To prevent the artefacts from falling to Japanese hands, collection was moved to Shanghai in 20,000 crates. Included some items from other museums.

National Palace Museum History – 2

1936 – Collection moved to new warehouse in Nanjing.

1940s – As Japanese advanced, collection moved to 3 other locations.

1945 – Japan surrendered.

1947 – Shipped back to Nanjing.

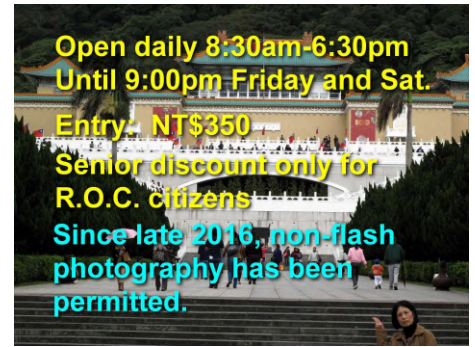
1948 – Communists pushed Republicans to Taiwan in China's Civil War. They took with them 3,000 crates with over 600,000 of the most prized items. Thus Taiwan National Palace Museum was created.

Open daily 8:30am-6:30pm
Until 9:00pm Friday and Sat.

Entry- NT\$350

Senior discount only for
R.O.C. citizens

Since late 2016, non-flash
photography has been
permitted.



Pillow in shape of a recumbent boy
Northern Song Dynasty – 960-1127



Artifacts are Internet photos, not my own.

Ritual Dou Vessel – Qing 1723-1735



Mao Gong Ding Cauldron
Western Zhou Dynasty -
1047-772 BCE



Wine - Water Vessel
Western Zhou
1100BC - 771BC



Flower Vase
Ming 1368-1644



Qing Dynasty



1744

Porcelain Vases



Meat-shaped
stone
Qing Dynasty
1644-1912



Ming Dynasty Vase
1368-1644

Southern Song Dynasty
1195-1224



Kublai Kahn
Reigned 1260-1294
Painted shortly after his death



Important News!

The National Palace Museum in
Taipei will be CLOSING
in 2020 for 3 years
for major renovations.

Parts of the Taipei
collection will be
exhibited at the
Museum's existing
branch in Chiayi.



Grand Hotel - Opened 1973



Grand Hotel (Taipei)

- Owned by Government.
- 490 rooms.
- Each level decorated in different dynasty.
- 285 feet high.
- Rooms US\$110 and up.



Grand Hotel (Taipei)



Famous Guests at Grand Hotel (Wikipedia)

- Dwight D. Eisenhower
- Richard Nixon
- Ronald Reagan
- Bill Clinton
- Warren Christopher - His arrival from the airport in 1978 was delayed several hours by crowds throwing eggs and screaming protests over U.S. President Jimmy Carter's decision to break relations with Taiwan
- Benigno Aquino - President of Philippines - Stayed at hotel the night before his assassination on Aug 21, 1983
- Nelson Mandela
- Margaret Thatcher
- Shah of Iran Mohammad Reza Pahlavi
- King Hussein of Jordan
- Lee Kuan Yew - Singapore
- King Bhumibol of Thailand and his wife, Queen Sirikit

Grand Hotel Taipei Fire 1995

Top floors and roof. Caused by renovation work.
Fire truck ladders could not reach.
Hotel was closed until 1998.



Secret tunnels under Grand Hotel to let dignitaries escape in case of political emergency. Now can tour.

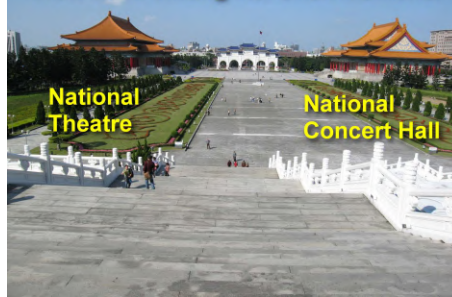


Internet Photo

Gateway to Chiang Kai Shek Memorial



View from Chiang Kai Shek Memorial



National Theatre

National Concert Hall

National Theatre



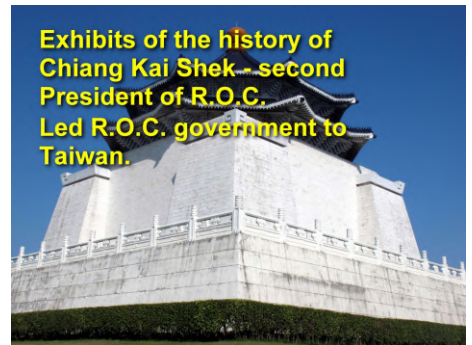
National Concert Hall



Chiang Kai Shek Memorial Hall Opened 1980



Exhibits of the history of Chiang Kai Shek - second President of R.O.C. Led R.O.C. government to Taiwan.



Wikipedia: "In February 2017 Taiwan's Ministry of Culture announced plans to transform the hall into a national center for 'facing history, recognizing agony, and respecting human rights' A corresponding de-emphasis of the Chiang personality cult is underway as proposals for transforming the hall are reviewed."



Why is Chiang controversial today?

Critics say:

- Dictator. Authoritarian autocrat.
 - Suppressed and purged (killed) opponents and critics.
 - Arbitrarily incarcerated opponents.
- Taiwan natives say: "Invader".**

Did you know his picture was on Forbidden City before Mao?



Chiang Kai Shek Memorial Hall



Chiang



Chiang and Sun Yat Sen



Sun's (third) wife's sister married Chiang. So Chiang and Sun were brothers-in-law.

Chiang leading troops during China's Civil War





Chiang, Roosevelt, and Churchill

Cairo Conference Nov. 1943 to discuss defeating Japan and post-war Asia.



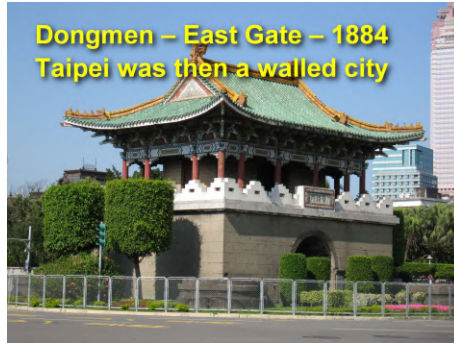
Chiang Kai Shek's limo



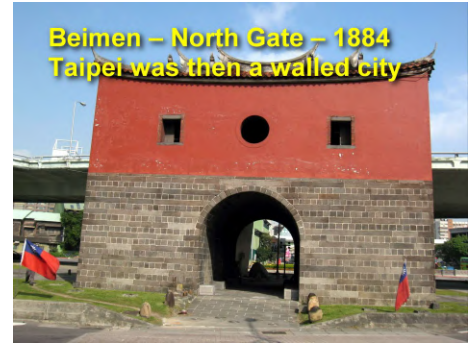
License Plate: Why the 8s? In Chinese, 8 is "Ba", which sounds like "Fa" – which means to make a fortune, prosperity, success, and high social status. So 8 is Chinese Lucky Number.



Chiang Kai Shek's Presidential Office



Dongmen – East Gate – 1884 Taipei was then a walled city



Beimen – North Gate – 1884 Taipei was then a walled city



Shilin Night Market MRT Jiantan station 15 blocks long 4pm to midnight



Shilin Night Market Food, clothing, crafts, etc.



Cixian Temple - 1796 at Shilin Night Market



Cixian Temple - 1796 at Shilin Night Market

Dedicated to Tin Hau (Mazu) Goddess of the Sea



Friend I met at Cixian Temple



Shilin Night Market Skewers: You choose - they will cook



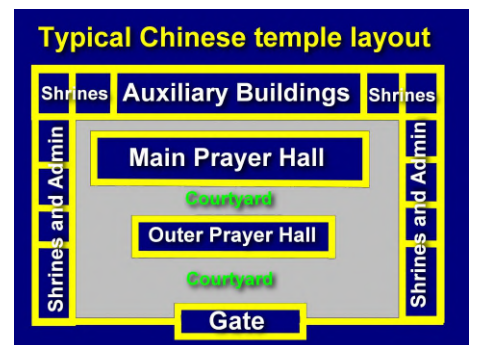
Shilin Night Market Squid



Shilin Night Market Lime "Slurpee"



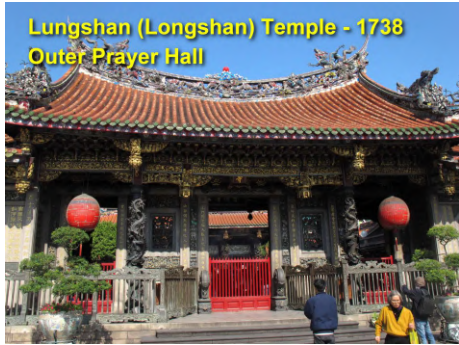
Shilin Night Market





Lungshan Temple - 1738
Also spelled Longshan

Outer Prayer Hall



Lungshan (Longshan) Temple - 1738
Outer Prayer Hall



Lungshan Temple Main Hall

Dedicated to deities including Guanyin (mercy), Mazu (sea), and Guan Yu (war).



Lungshan Temple - 1738



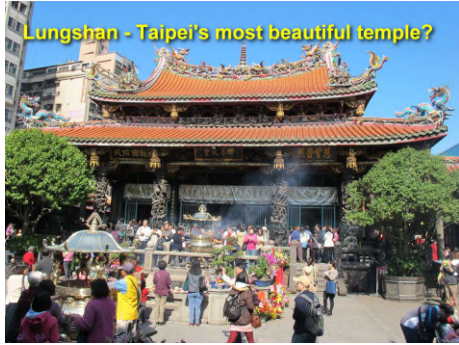
Lungshan Temple



Lungshan Temple



Lungshan Temple
Worshippers' offerings



Lungshan - Taipei's most beautiful temple?



Longshan Market
Near Lungshan Temple



Longshan Market
10am to 8pm Daily



Longshan Market
10am to 8pm Daily



Longshan Market



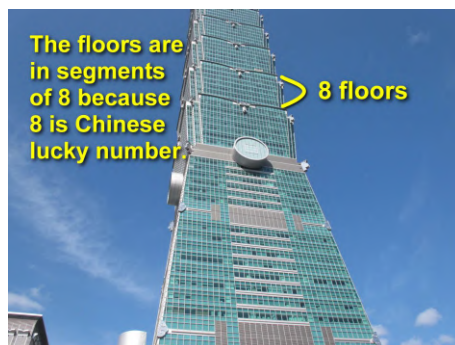
Longshan Market
"Drive In"



Huaxi Street Night Market
Also called Snake Alley



Huaxi Street Night Market -
"Delicacies including snake blood and meat, turtle blood and meat, and deer penis wine." Wikipedia.





Funny way to advertise



Taipei Main Railway Station

- Trains
- High-speed trains
- Metro
- Local buses
- Long-distance buses

220 million train passengers per year



Fire Station



Fire Station



Modern Taipei City



Taipei Street Art



Taipei Street Art



Taiwan Post Box 限時郵件



Taipei Farmers' Market



Taipei Farmers' Market Taro



Taipei Farmers' Market

Pork Jerky

Preserved Garlic



Taipei Farmers' Market Chinese Pears

NT\$100 for 5 (US\$3.25)



Did you ever hear of asparagus juice?



Taipei Farmers' Market Pomelos



Taipei Farmers' Market Dried persimmon



Taipei Farmers' Market
Ginger



Taipei Farmers' Market
Persimmons



Japanese Toilet
Common in Taiwan because
of Japanese occupation
1895-1945

Seat is heated

Water squirts out
from here

Controls --
next slide



Rhythm =
Pulsating

Water squirts
on your
behind
(family =
men and
women)

For women

Water
pressure

Water
temp

The seat
is heated
too

Braille markings



Taipei Confucius Temple
1879



Confucianism is an ethical system,
not really a religion

- 5 ethical pillars of Confucianism:
- Benevolence (the golden rule).
 - Righteousness or justice (fairness).
 - Proper ritual (observe tradition).
 - Knowledge (study).
 - Personal integrity



Probably at Confucius Temple
because of Japanese influence
during the occupation 1895-1945
"Ema" in Japanese

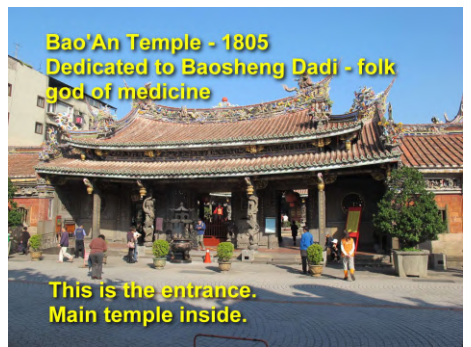


Confucius
encouraged
scholarship

All Pass!

I wish to enter a successful
graduate school.

I wish that
become an
engineering
major



Bao'An Temple - 1805
Dedicated to Baosheng Dadi - folk
god of medicine

This is the entrance.
Main temple inside.



Taipei Bao'An Temple - 1805



Bao'An Temple - 1805
Main temple



Bao'An Temple - 1805



Symbolism: Infinite cycle of nature's endless
creation and destruction, life, and death



Bao'An Temple - 1805



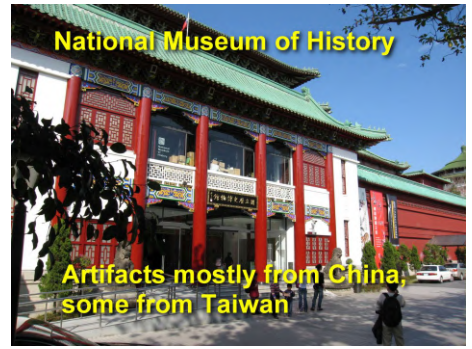
Bao'An Temple - 1805



Taiwan Postal Museum
7 stories of postal memorabilia and philately



Taiwan Postal Museum



National Museum of History

Artifacts mostly from China, some from Taiwan



National Museum of History - Taipei



National Taiwan Museum - 1908

- Anthropology
- Earth sciences
- Zoology
- Botany.



Wellcome (similar to Publix)
Branch of HK supermarket chain



Beitou Hot Springs
Mineral Baths and Museum



Beitou Hot Springs
Temperature 176 to 200 deg F
In Taipei near an MRT station



Beitou Hot Springs
Beautiful walk around the pool



One of many small hotels near
Beitou Hot Springs



Tea Eggs (cooked in tea)

Small spotted ones are
quail eggs



A common form of
advertising in Taipei



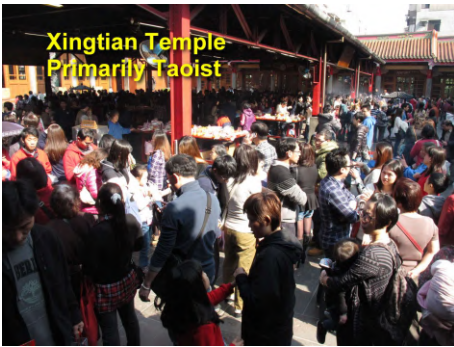
Typical Taipei Street



Typical Taipei Street



Xingtian Temple - 1967
Dedicated to Guan Yu - folk god of
war and business



**Xingtian Temple
Primarily Taoist**



Offerings at Xingtian Temple



Temple officials in blue robes offer free service for rituals to eliminate disasters or pray for safety and good fortune.



To say Xingtian Temple is popular is an understatement!



**National 228 Memorial Museum
Daily except Monday 10-5**

In 1945 Republican government of China took over rule of Taiwan from the Japanese. Republican Governor (Chen Yi) was brutal to the Taiwan natives who had survived Japanese rule.



Museum of the February 28, 1947 "incident". (Some call it a massacre)

Battles between Taipei natives and immigrants who came with Chiang Kai Shek. Estimated 18,000 to 28,000 Taiwanese were slaughtered.



Chiang Kai Shek ruled with an iron hand. Discussion of February 28 Incident was taboo for decades.



For shoppers: Taipei branch of major Japanese department store



I'm lovin' it in Taipei

**Harry Potter Studios
Sat May 18 2:00-3:30pm
Downtown
Kids
Parents
Grands**



**Then, last presentation until the Autumn...
Hong Kong Off the Beaten Track #4
Tuesday, May 21, 2019,
3:00-4:30 pm.
Downtown. *All New***

**THE END
Thanks for joining me in Taiwan.
ppacter@gmail.com
Copyright © Paul Pacter
All Rights Reserved**

