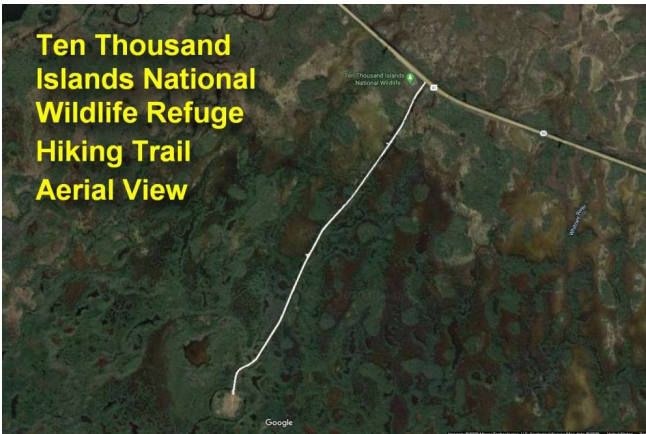


**Ten Thousand Islands Nat'l Wildlife Refuge**  
**Website:**  
[www.fws.gov/refuge/ten\\_thousand\\_islands/](http://www.fws.gov/refuge/ten_thousand_islands/)  
**Get there by boat (best):** Ramps at Goodland and Port-of-the-Islands. Guided boat tours from Marco Island and Everglades City.  
**Get to Marsh Trail by car:** US-41 11 miles east of Collier Blvd. *Careful... no sign!*  
**Managed by:** US Fish & Wildlife Service, National Wildlife Refuge System, Department of the Interior.

**What:** Established 1996. Covers 35,000 acres.  
 A maze of mangrove islands and narrow waterways that serve as nursery grounds for countless plants, animals, and fish.  
 One of 545 national wildlife refuges.  
 Approximately two thirds of the refuge is mangrove forest.  
**Mile-long hiking trail, canoe and kayak trails, and an observation tower overlooking the marsh.**



**Boat Tours from Everglades City:**  
**Everglades National Park Boat Tours**  
<https://www.evergladesnationalparkboattours.gulfcoast.com/>  
 Quiet boats. Narrated by naturalists. Tours every 30 minutes, 9am to 5pm, Dec. to mid-April. Less frequent April to Dec.  
 Tours depart from the Tower Docks on Chokoloskee Causeway on Rt. 29, 1/2-mile south of Traffic Circle in Everglades City.  
**\$37 adults, \$19 under 12.**

**Boat Tours from Marco Island**  
**Eco Endeavors**  
<https://ecoendeavors.org/>  
**3 Hour Tour. 25 miles round-trip.**  
 Through the mangrove forests and barrier islands.  
 Stop at a quiet barrier island only accessible by boat. Shelling. Swimming.  
 9am-noon. 12:30pm-3:30pm. 4pm-7pm.  
**Adult: \$68.50 Under 12: \$42.50.**



**Wikipedia:**

"Some of the Ten Thousand Islands are suitable for overnight visits, as dictated by the United States Fish and Wildlife Service. Since this is a wilderness area where wind, weather and lack of fresh water can become threatening, the Wildlife Service recommends only seasoned canoeists and sea kayakers attempt the trip."

The refuge is home to a wide variety of plants and animals

**Fish:** Nearly 200 species, including tarpon, snook, red drum, spotted sea trout, goliath grouper, smalltooth sawfish.

**Birds:** More than 200 species, including least tern, black skimmer, bald eagle, peregrine falcon, wood stork, brown pelican, mangrove cuckoo, red knot.

**Reptiles:** Including anoles, loggerhead sea turtles, green turtles, Kemp's Ridley sea turtles, alligators.

**Animals:** Including raccoon, river otter, bottlenose dolphin, Florida manatee.

**Plants:** Innumerable species, including mangroves, sea oats, cordgrass.

**Invasive plants:** Including latherleaf and Brazilian pepper.

Ten Thousand Islands National Wildlife Refuge  
Start of Marsh Trail 1.2 miles.  
First 1,000' paved. Then gravel.



Ten Thousand Islands Natl Wildlife Refuge  
Gumbo Limbo (Tourist) Tree



Ten Thousand Islands National Wildlife Refuge  
Marsh Trail



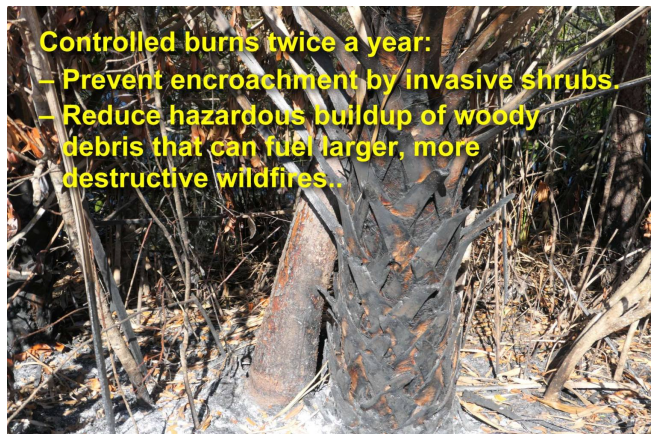
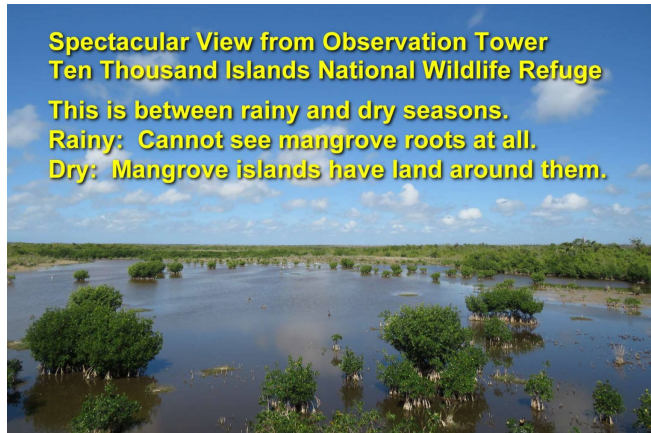
Ten Thousand Islands National Wildlife Refuge  
Ripples from fresh water carp



Ten Thousand Islands NWR  
Blue Heron Alligator









In addition to the tower, there are several benches where you can sit and watch.



10,000 Islands NWR  
Brown Pelicans



Today's Lunch Menu: Tilapia



True Story: On April 6, 2022, I was sitting on this bench when...



Notice the turtle in its mouth.

Ten Thousand Islands  
National Wildlife Refuge  
Marsh Trail



Cormorant Eating  
A Fish



Blue Heron



Ten Thousand Islands NWR  
Anhinga





