

# Naples + Amalfi Coast May 2026

• Naples • Pompeii • Sorrento • Capri  
• Positano • Amalfi • Ravello



**Embark on a Mediterranean tour along the stunning Amalfi Coast,** where breathtaking vistas meet mouthwatering cuisine. Explore ancient cliffside villages and turquoise waters by day, then savor the region's culinary treasures by night. From the tangy flavors of fresh seafood to the rich aromas of handmade pasta, every meal is a celebration of Italy's culinary heritage. Don't miss out on this unforgettable journey for the senses. **Secure your spot now for May 2026 before it's too late!**



[info@MedFoodieTours.com](mailto:info@MedFoodieTours.com) | Scan for Itinerary & Information

This is an exclusive travel program presented by Mediterranean Foodie Tours LLC

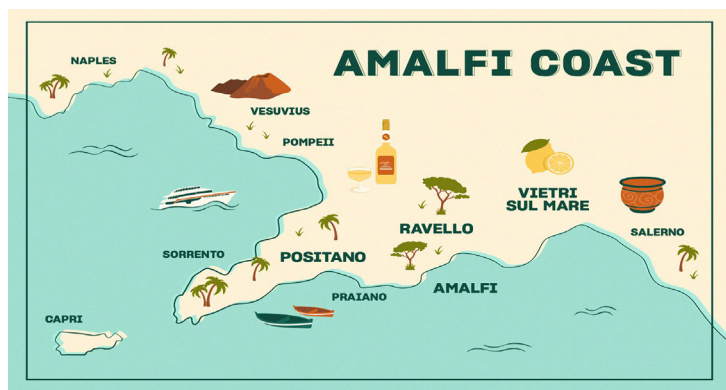




# Naples + Amalfi Coast May 2026

• Naples • Pompeii • Sorrento • Capri  
• Positano • Amalfi • Ravello

## See the Sights With an Appetite!®



Join us for a culinary adventure along the stunning Amalfi Coast. From the vibrant streets of Naples and Sorrento to the elegant charm of Positano, the historic beauty of Amalfi, and the hilltop paradise of Ravello, our tour promises to immerse you in the authentic flavors of each destination. Enjoy hands-on cooking classes, private tours of local markets, and unforgettable dinner parties showcasing the best of Italian cuisine. Led by well-traveled guides, our tours offer a fun and immersive cultural experience, where every dish tells a story and every view takes your breath away.

Come along on a journey of food, exploration, and unforgettable memories along the Amalfi Coast.

### This 10-day Culinary Adventure Includes:

- Economy-Class Air transportation by scheduled airline service
- Transportation by **deluxe private motor coach/Ferries** with **Private Local Expert/Guide(s)**
- First-Class hotel accommodations
- 13 Unique Food Experiences
- Local breakfast each morning at the hotels, and other food and meals as indicated in the itinerary
- Entrance fees for included sightseeing tours, wine tasting, cooking class(es)—see itinerary for full details
- MFT App Access: Pre-Travel, Daily Itinerary and Free-Time Suggestions, Travel Resources
- Taxes for included ground service, departure taxes, Customs service charges and airline security fees



**The Vacation Price Does not Include:** Items of a personal nature such as passport fees and destination entry requirements; laundry and cleaning; telephone calls; optional tours and excursions; tips to Driver/Guide and local guides; tips to hotel and breakfast staff; luggage handling at airports or ground porters at hotel destinations; personal travel protection; meals other than those stated within the full itinerary, and drinks with some meals.

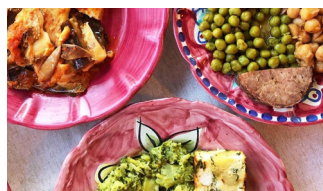
*\*We can accommodate departures from any airport. This tour requires a twenty-person minimum booking. Please contact us for full details.*



SEE THE SIGHTS WITH AN APPETITE®

MedFoodieTours.com

MedFoodieTours





# Naples + Amalfi Coast May 2026

• Naples • Pompeii • Sorrento • Capri  
• Positano • Amalfi • Ravello

## Day-by-Day Itinerary

### Day 1: Chicago—En Route

Today we depart Chicago's O'Hare International Airport on our non-stop flight to Naples, Italy. (IF)

### Day 2: Naples—Italy (Arrive+Check-in)

This afternoon we arrive in Naples and change planes for our connecting flight to Naples, Italy. On arrival, we'll meet our Italian Tour Guide who will accompany us throughout our vacation. Leaving the airport, we'll make the short journey into Naples for an evening at leisure. As we'll soon learn, Naples is a stunning city - from its charming waterfront under the shadow of Vesuvius, to its beautiful and bustling historic center. Its position as a meeting place for various peoples since ancient times has had a profound impact on Naples. Enjoy a leisurely night out on the town with a nightcap on us! Overnight: Naples, Italy (FE)

### Day 3: Naples—Italy (Sightseeing)

Enjoy breakfast provided in your hotel. We start the tour at SPACCANAPOLI which splits the center of the historic old town (centro storico) in half. We'll begin at Piazza San Domenico Maggiore. The street is not only an attraction in itself but is conveniently close to many of the city's top attractions like Santa Chiara, Santa Maria and San Biagio Maggiore. We will stroll past palaces, churches, shrines, stores, bars, restaurants and artists' workshops. Spaccanapoli is a foodies heaven, there are many authentic restaurants as well as excellent pastry stores like Scaturchio known for its sfogliatelle and babba. We continue on to PIO MONTE DELLA MISERICORDIA this church holds several valuable works of art. Its most famous piece is The Seven Works of Mercy by Caravaggio. FREETIME: Take some free time to browse, shop and explore. Dinner: No trip to Naples is complete without eating the city's signature pizza. We'll learn how to make the pizza—in addition to eating it hot from the oven. Overnight: Naples, Italy (B,FE,D)



Cantina del Vesuvio Winery + Cooking Class • Via Panoramica, Trecase (NA) - Italy

### Day 4: Pompeii/Vesuvius/Sorrento—Italy

Enjoy breakfast provided in your hotel. Depart for Sorrento, stopping on the way for a guided tour of Pompeii to view the excavated ruins of a Roman city buried in ash in AD 79 and lost before its rediscovery in 1748. Enjoy an authentic lunch on your own. No need for dinner plans because you'll be joining Chef Esther, of Cantina del Vesuvio Winery, for a winery tour with samples and cooking-class and dinner in her home on the location of the vineyard. This published chef will teach you how to prepare authentic, local recipes and you will dine and enjoy their finest wines for an unforgettable night. Continue to the beautiful Campanian seaside town of Sorrento to check into our hotel and enjoy an evening at your leisure. Overnight: Sorrento, Italy (B,FE, D)



Island of Capri • Blue Grotto

### Day 5: Sorrento/Capri—Italy

Enjoy breakfast provided at the hotel. Spend an unforgettable day on the island of Capri. Embark on the hydrofoil and receive a guided orientation around the Island with leisure time to explore. Options include stepping aboard a motorboat to visit the Blue Grotto or take the gondola from Anacapri up Mount Solaro. With some free time for lunch, shopping and exploring, you'll have a perfect day as you browse the most unique shops in the region. When you are ready, you will go to Capri's main square for more shopping and a walking tour through the Caesar Augustus Garden to see the beautiful view of the bay in Salerno. Lunch at your leisure during break time from the Capri tour. Hydrofoil back to Sorrento (where a Surprise Food Experience awaits) for a delicious dinner of your choosing. Overnight: Sorrento, Italy (B, FE)



MedFoodieTours.com



Info@MedFoodieTours



Log on to [MedFoodieTours.com](https://www.MedFoodieTours.com) For Regular Updates & Information

This is an exclusive travel program presented by Mediterranean Foodie Tours LLC



MedFoodieTours



# Naples + Amalfi Coast May 2026

• Naples • Pompeii • Sorrento • Capri  
• Positano • Amalfi • Ravello

## Day-by-Day Itinerary



### Day 6: Ravello/Amalfi—Italy

Enjoy breakfast provided in your hotel. Your day begins with a coach or water tour on the Amalfi Coast. Relax and enjoy your visit while our driver or captain takes you along the beautiful coastline for a visit to Ravello and Amalfi. The Italian village of Ravello is one of the quietest along the Amalfi Coast, set a bit away from the busy beaches. Known as the “City of Music”, Ravello has always been a favorite retreat for artists and intellectuals looking for inspiration from the sweeping vistas.

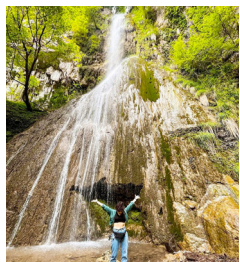
We'll stay in Ravello for lunch with a breath-taking view of the Mediterranean and the dramatic Amalfi coastline. We travel to The town of Amalfi next, For Dinner we'll visit a terraced lemon grove bearing the region's famous Sfusato Amalfitano trees. Here, enjoy a tour of the grove and taste lemon treats, and a tour at a local limoncello producer. Back to Sorrento for evening of FREETIME. Overnight: Sorrento, Italy (B,FE,D)

### Day 7: Positano—Italy

Enjoy breakfast provided in your hotel. Enjoy the entire day to explore the famous cliffside village of Positano, with its steep narrow streets lined with boutiques and cafes and amazing beaches including the Marina Grande. We'll enjoy a Sweet Treat at Buca di Bacco pastry shop—an unforgettable taste that you will never forget. On the return to Sorrento, freshen up for an Authentic Pasta Making Dinner at a local restaurant in Sorrento. Overnight: Sorrento, Italy (B,FE,D)



Prodica Island



Valle delle Ferriere



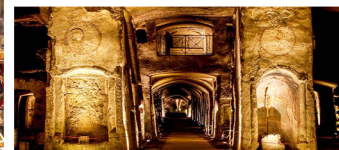
Atrani

### Day 8: Day Trips/Excursions Via Sorrento, Italy

Enjoy breakfast provided in your hotel. Venture beyond the tour group and explore the hidden treasures of the Amalfi Coast with free-time and day trips. Embark on a journey to the glamorous island of Procida, where rugged cliffs meet crystal-clear waters, or discover the lush landscapes of Ischia, known for its thermal spas and natural beauty. Explore the charming villages of Praiano, and Atrani, each offering a unique glimpse into local life and culture. And of course, no excursion is complete without indulging in the authentic flavors of Italian cuisine. Immerse yourself in history, culture, and culinary delights on these unforgettable day trips. Lunch & dinner of your choosing. On the return to Sorrento, be treated to an Olive Oil Tasting Experience and a Surprise Food Experience later in the evening. Overnight: Sorrento, Italy (B,FE)



Via San Gregorio Armeno • The Pulcinella Statue • Underground Tour (Sotterranea)



### Day 9: Sorrento to Naples, Italy

Breakfast at hotel. LUNCH ON OWN. After lunch we get down at NAPLES SOTTERRANEA and travel back 2400 years to the heart of where Naples began. The historic site is situated underground beneath the Naples old town. The subterranean world tells the story of Naples' history and is full of legends and myths. Running beneath the city are geothermal zones originating at Mt. Vesuvius. Next up...VIA SAN GREGORIO ARMENO where artists' workshops and stores spill out onto the sidewalk making a very colorful and welcoming scene. Take some free time to browse, shop and explore. Matteo's Gelato Demo and Samples! FAREWELL DINNER. Overnight: Naples, Italy (B,FE,D)



### Day 10: Naples—Chicago/En Route

Breakfast at hotel. All too soon, our Italian vacation has come to an end. We check in at the Naples Airport for our return journey home. (B,IF)  
**Welcome Home!**

### Meal Codes:

IF=In-Flight; B=Breakfast; D=Dinner  
FE=Food Experience



SEE THE SIGHTS WITH AN APPETITE®

MedFoodieTours.com Info@MedFoodieTours



Log on to [MedFoodieTours.com](https://www.MedFoodieTours.com) For Regular Updates & Information

This is an exclusive travel program presented by Mediterranean Foodie Tours LLC








## RESERVATION FORM

Please reserve \_\_\_\_ places for me/us on the **Mediterranean Foodie Tour: Naples+Amalfi Coast 26**

Enclosed is my/our payment in the amount of \$ \_\_\_\_ (\$500 deposit per person).

**IMPORTANT:** Please see the included flyer for information regarding Travel Protection, and please complete the Insurance Enrollment Form and return with your tour reservation application.

### PAY BY CREDIT CARD:

Card Number:	Expiration Date:
Billing Address:	Amount to charge:
Signature:	 Payments by credit card will incur a 4% service fee

We did the  
deposit math  
for you:

\$500 for 1  
\$1000 for 2  
\$1500 for 3  
\$2000 for 4

### PAY BY CHECK: Please make checks payable to: **MEDITERRANEAN FOODIE TOURS LLC**

☐ Mr. ☐ Mrs. ☐ Ms.

☐ Mr. ☐ Mrs. ☐ Ms.

\_\_\_\_\_  
PLEASE PRINT NAME IDENTICAL TO PASSPORT

\_\_\_\_\_  
PLEASE PRINT NAME IDENTICAL TO PASSPORT

\_\_\_\_\_  
Address

\_\_\_\_\_  
City

\_\_\_\_\_  
State

\_\_\_\_\_  
Zip

\_\_\_\_\_  
Email Address

\_\_\_\_\_  
Phone

\_\_\_\_\_  
I will room with (if other than spouse)

\_\_\_\_\_  
Name(s) of other people you'll be traveling with

Wheelchair at airport and/or special dietary needs: \_\_\_\_\_

☐ I do not have a roommate but will share. If a roommate cannot be found, I will pay the single supplement.

☐ I desire single accommodation (subject to availability) at the supplementary charge of \$690.



PLEASE ENCLOSE A COPY OF THE PHOTO PAGE OF YOUR PASSPORT

**MAIL FORM/PAYMENT TO: 3606 Main Ave • Sheboygan, WI 53083**

**EMAIL FORM/PAYMENT TO: Clay@MedFoodieTours.com**



**TOUR DEPOSIT AND PAYMENT:** Reservations may be made by check or major credit card. Credit cards can be accepted for payment(s); however, the vacation price reflects a 4% cash discount. Please call MFT at +1 888.302.8119 to arrange payment by credit card; 4% of the payment amount will be assessed on credit card payments. You will be invoiced for the balance of payment due 90 days prior to departure. Payment plans are available.

**ARRANGEMENTS:** The tour price is based on a minimum participation of 30 persons and includes planning, and operational charges and is quoted on the current rate of exchange, tariff rates and airfares in effect as of December 1, 2023. In the event of a marked increase in foreign currency or in tariff rates, the cost is subject to revision.

**TOUR PRICING:** This is a package tour in which group airfares and land tour costs have been combined in the most advantageous way. Should you wish to deviate from the package tour by changing your departure and/or return dates of travel, this will eliminate the advantages of the package tour price. There will be a service charge of \$100 per person for altering the airline itinerary, plus any additional charges assessed by the airlines.

**CANCELLATION:** If after making your initial deposit you find it necessary to cancel from the tour for any reason, there is a cancellation charge equal to the per person deposit up to 90 days prior to departure. For cancellation between 89 and 60 days prior to departure, there is a cancellation charge equal to 50% of the tour cost. For cancellation within 59 days of departure, the cancellation charge is 100% of the tour cost. **IMPORTANT:** Cancellations will not be accepted by telephone and must be sent in writing to: 3606 Main Ave, Sheboygan, WI 53083, or emailed to [Clay@MedFoodieTours.com](mailto:Clay@MedFoodieTours.com).

**TRAVEL PROTECTION:** For your convenience, we offer a Traveler Insurance Services protection plan to help protect you and your travel investment against the unexpected. For more information and rates, please review the product flyer enclosed. If you would like to enroll, fill out the enrollment form and return it with your tour reservation form. The full coverage terms and details, including limitations and exclusions, are contained in the insurance Policy. To view/download the policy, go to: <https://policy.travelexinsurance.com/GPZ-1023>. Traveler Insurance Services, Inc. CA Agency License #0D10209. Insurance coverages underwritten by individual member companies of Zurich in North America, including Zurich American Insurance Company (NAIC # 16535).

**PASSPORTS AND VISAS:** Your tour requires a passport valid for the duration of your travel. If you do not already have your passport, or it will expire before your return date, we suggest you apply for it immediately. No visas are required for your tour. However, if you are a citizen of a country other than the United States, you must advise us in writing with your Reservation Application, as other travel documents may be required.

### RESPONSIBILITY

MEDITERRANEAN FOODIE TOURS LLC (MFT) 3606 Main Ave, Sheboygan, WI 53083, and its employees, shareholders, agents, and representatives (MFT) uses third party suppliers to arrange tours, transportation, sightseeing, lodging, and all other services related to this tour. MFT is an independent contractor and is not an employee, agent, or representative of any of these suppliers. MFT does not own, manage, operate, supervise, or control any transportation, vehicle, airplane, hotel or restaurants, or any other entity that supplies services related to your tour. MFT is not affiliated with any other tour operator. All suppliers are independent contractors and are not agents or employees or representatives of MFT. All tickets, receipts, coupons, and vouchers are issued subject to the terms and conditions specified by each supplier, and by accepting the coupons, vouchers, and tickets, or utilizing the services, all customers agree that neither MFT, nor its employees, agents, or representatives are or shall not be responsible or become liable for any delay incurred or change in schedule by any person in connection with any means of transportation; nor for any loss, damage or injury to person or property or otherwise, in connection with any service supplied or not supplied resulting directly or indirectly from any occurrence beyond the control of MFT by reason of any event beyond the control of any agency or supplier, or occurring without the fault or negligence of such agency or supplier. MFT assumes no responsibility or liability for any loss, injury or damage or loss of any traveler that may result from any act or omission on the part of others; MFT assumes no responsibility or liability for personal property; and MFT shall be relieved of any obligations under these terms and conditions in the event of any strike, labor dispute, act of God, or of government, fire, war, whether declared or not, terrorism, insurrection, riot, theft, pilferage, epidemic, pandemic, illness, physical injury, quarantine, medical or customs or immigration regulation, delay, or cancellation. MFT accepts no responsibility for lost or stolen items. MFT reserves the right to refuse any participant or potential participant at its sole discretion. No refund will be made for voluntary absence from the tour unless arrangements are made at the time of booking.

The above tour conditions are provided in addition to the full terms and conditions of travel which can be found here [grouptripsandtravel.com/booking-agreement-terms-conditions/](http://grouptripsandtravel.com/booking-agreement-terms-conditions/). By booking this trip you are agreeing to be bound by the full terms and conditions of travel in addition to the tour conditions above. It is therefore vital that you read the full terms and conditions before making any booking. Making a booking is indicative of your agreement to be bound by all of the terms and conditions.





### Next steps:

If you elected to purchase travel insurance, please complete this enrollment form and return it to your travel provider.



## Enrollment Form | 360° Group Travel Protection

### Is travel protection for me?

Travel insurance is recommended to help protect you and your trip investment for events such as cancellations, delays, and emergencies.

Please read the following travel insurance purchase options and return the completed form to your travel provider. Contact Travelex Insurance Services if you have any coverage questions.

☐ I/we have been advised that a Travelex group protection plan is available at an additional cost. I/we have read and understand the policy, including exclusions and limitations, as well as the fraud warning and important consumer information contained in the attached flyer. I/we **do** wish to purchase trip protection. (Sign and date below and return this form and your payment to your travel provider.)

☐ I/we have been advised that a Travelex protection plan is available at an additional cost. I/we **do not** wish to purchase trip protection. (Sign and date below and return this form to your travel provider.)

### Enrollment Form

Please complete the enrollment form below to purchase travel insurance.

#### Traveler

Traveler 1 name \_\_\_\_\_

Traveler 2 name \_\_\_\_\_

#### Trip details

Tour name \_\_\_\_\_

Destination \_\_\_\_\_

Departure date \_\_\_\_\_ Return date \_\_\_\_\_

#### Travel insurance plan calculation

##### Travel protection plan rate

(calculate rate below using full trip cost and current age for each traveler)

\$ \_\_\_\_\_ \$ \_\_\_\_\_  
Traveler 1 Traveler 2

Total amount due \_\_\_\_\_  
(and authorized as payment) \$ \_\_\_\_\_

Please submit payment to your travel provider.

Signature \_\_\_\_\_ Date \_\_\_\_\_

Signature \_\_\_\_\_ Date \_\_\_\_\_

The product descriptions provided here are only brief summaries and may be changed without notice. The full coverage terms and details, including limitations and exclusions, are contained in the insurance policy. Travel insurance is underwritten by Zurich American Insurance Company, (NAIC #16535). Any person who knowingly presents a false or fraudulent claim for payment of a loss or benefit, or who knowingly presents false information in an application for insurance, is guilty of a crime and may be subject to fines and confinement in prison. Please visit [travelexinsurance.com/company/fraud-warning](http://travelexinsurance.com/company/fraud-warning) to view the state-specific fraud warnings, or call +1.888.574.7026. 10.23 GRPEFF1



A company of ZURICH





Group tours are an exciting way to explore the world, and a Travelex travel protection plan can help ensure that you stay safe during your next tour. Our 360° Group Premier plan provides maximum travel protection for all ages at competitive group rates. Benefits include trip cancellation and interruption, emergency medical coverage, and 24/7 travel assistance services.



## 360° Group Premier | Group Travel Protection

### Plan highlights

- Trip cancellation/interruption benefit includes:
  - Sickness, injury, or death<sup>1</sup>
  - Inclement weather & natural disasters
  - Financial insolvency<sup>2</sup> & labor strike
  - Involuntary unemployment

- Primary coverage, no deductibles<sup>3</sup>
- Medical evacuation
- 5-hour travel delay benefit
- 3-hour missed connection benefit
- 12-hour baggage delay benefit
- Fast online claims<sup>4</sup>

### 360° Group Premier plan rates<sup>3</sup>

Trip cost	0-59	60-74	75+
\$0	\$36	\$47	\$64
\$1 - \$250	\$44	\$58	\$81
\$251 - \$500	\$57	\$74	\$105
\$501 - \$1,000	\$86	\$114	\$168
\$1,001 - \$1,500	\$109	\$143	\$211
\$1,501 - \$2,000	\$149	\$191	\$215
\$2,001 - \$2,500	\$191	\$245	\$277
\$2,501 - \$3,000	\$234	\$300	\$338
\$3,001 - \$3,500	\$276	\$354	\$400
\$3,501 - \$4,000	\$319	\$409	\$461
\$4,001 - \$4,500	\$361	\$463	\$523
\$4,501 - \$5,000	\$404	\$518	\$584
\$5,001 - \$5,500	\$446	\$572	\$646
\$5,501 - \$6,000	\$489	\$627	\$707
\$6,001 - \$6,500	\$531	\$681	\$769
\$6,501 - \$7,000	\$574	\$736	\$830
\$7,001 - \$8,000	\$638	\$818	\$923
\$8,001 - \$9,000	\$723	\$927	\$1,046
\$9,001 - \$10,000	\$808	\$1,036	\$1,169
\$10,001 - \$11,000	\$893	\$1,145	\$1,292
\$11,001 - \$12,000	\$978	\$1,254	\$1,415
\$12,001 - \$13,000	\$1,063	\$1,363	\$1,538
\$13,001 - \$14,000	\$1,148	\$1,472	\$1,661
\$14,001 - \$15,000	\$1,233	\$1,581	\$1,784
\$15,001 - \$16,000	\$1,318	\$1,690	\$1,907
\$16,001 - \$17,000	\$1,403	\$1,799	\$2,030
\$17,001 - \$18,000	\$1,488	\$1,908	\$2,153
\$18,001 - \$19,000	\$1,573	\$2,017	\$2,276
\$19,001 - \$20,000	\$1,658	\$2,126	\$2,399

### 360° Group Premier plan benefits<sup>3</sup>

Benefits	Coverage
Trip cancellation	100% of trip cost (up to \$20,000)
Trip interruption	150% of trip cost (up to \$30,000)
Trip interruption—return air only <sup>5</sup>	\$1,000
Travel delay	\$1,000 (\$250/day)
Missed connection	\$1,000
Baggage & personal effects	\$1,500
Sporting equipment delay <sup>3</sup>	\$600
Baggage delay	\$250
Emergency medical expenses <sup>6</sup>	\$50,000
Emergency dental expenses <sup>6</sup>	\$500
Emergency evacuation & repatriation	\$250,000
Accidental death & dismemberment	\$10,000
Travel assistance services <sup>7</sup>	Included

<sup>1</sup>Of you, a traveling companion, family member, or business partner. <sup>2</sup>Coverage when plan is purchased at or before the final trip payment. <sup>3</sup>All coverage per insured up to the limits listed. Pre-existing medical conditions waiver may vary by state. Coverages may vary and may not be available in all states. Please see the policy for details, or call +1.888.574.7026. Rates are subject to change. <sup>4</sup>Based on industry average. Fastest payment on approved claims is based on electronic payment of claim. <sup>5</sup>Coverage for trip interruption and trip interruption—return air only cannot be combined. <sup>6</sup>\$50 deductible in CT, IN, KS, MO, MT, VT, and WA. <sup>7</sup>Provided by the designated provider listed in the policy. 10.23 GRPFY3







## Questions about plan benefits?

Call +1.888.574.7026 and use Plan GPZ-1023, or email [360Group@travelexinsurance.com](mailto:360Group@travelexinsurance.com).

### Trip cancellation & trip interruption

Protect travel investments and recover nonrefundable prepaid costs if your trip is canceled or interrupted for a covered reason. Popular covered reasons include:

- Sickness, injury, or death<sup>1</sup>
- Residence or destination uninhabitable
- Strike
- Inclement weather
- Cancel for business reasons
- Traffic accident en route
- Quarantine
- Jury duty/subpoena
- Military duty
- Financial insolvency<sup>2</sup>
- Terrorist incident
- Theft of passport/visa
- Involuntary termination

### Travel delay

Reimbursement for reasonable additional costs — such as accommodations, local transportation, and meals — if travel is delayed five hours or longer.

### Baggage & personal effects

Reimbursement for personal articles and expenses if bags are lost, stolen, or damaged.

### Baggage delay

Reimbursement for reasonable additional personal articles and expenses if bags are delayed for 12 hours or more.

### Emergency medical & dental expenses<sup>6</sup>

Emergency medical treatment if sickness or injury occurs while traveling.

### Emergency medical evacuation

Includes emergency medical evacuation to the nearest suitable medical facility, help returning home if medically necessary, and repatriation expenses.

### Accidental death & dismemberment

Reimbursement for permanent loss of life, limbs, or sight from a covered accidental injury during travel.

### Pre-existing medical condition exclusion waiver<sup>3</sup>

Pre-existing medical conditions are eligible for coverage when:

- The traveler is medically able to travel at the time of plan purchase
- The plan is purchased at or before the final trip payment

A pre-existing condition is an injury, sickness, or other condition (excluding any condition from which death ensues) of an insured, traveling companion, or family member traveling with the insured within the 60-day period immediately preceding the insured's plan purchase date.

### Plan details

View policy at [policy.travelexinsurance.com/GPZ-1023](http://policy.travelexinsurance.com/GPZ-1023)

Unless otherwise stated in the plan, this plan will not pay for any loss arising directly or indirectly out of, or as a result of, or from, or that occur to, or are as a result of the actions of, the insured or the insured's family member, or traveling companion, or business partner for the following: suicide, attempted suicide, or intentionally self-inflicted injury, while sane or insane (while sane in CO and MO); mental, nervous, or psychological disorders; being under the influence of drugs or intoxicants, unless prescribed by a physician; normal pregnancy, resulting childbirth, and elective abortion; participation as a professional in athletics while on a covered trip; participation in organized amateur or interscholastic athletic or sports competition or related practice events; riding or driving in any motor competition; off-road driving, whether as a driver or as a passenger; declared or undeclared war, or any act of war; civil disorder; service in the armed forces of any country; nuclear reaction, radiation or radioactive contamination; operating or learning to operate any aircraft, as pilot or crew; mountain climbing, bungee jumping, snow skiing, skydiving, parachuting, free falling, cliff diving, B.A.S.E. or base jumping, hang gliding, parasailing, travel on any air-supported device other than on a regularly scheduled airline or air charter company, or extreme sports; mountaineering where ropes or guides are commonly used including ascending and descending a mountain requiring specialized equipment, including but not limited to anchors, bolts, carabiners, crampons, lead/top-rope anchoring equipment and pick-axes; scuba diving if the depth of the water exceeds 75 feet; the insured's commission of or attempt to commit a felony; elective medical or holistic treatment or procedures; failure of any tour operator, common carrier, other travel supplier, person or agency to provide the bargained-for travel arrangements/services; a loss that results from a sickness, disease, or other condition, event, or circumstance that occurs at a time when this policy is not in effect for the insured; a diagnosed sickness (if insurance is purchased after such diagnosis) from which no recovery is expected and that only palliative treatment is provided and that carries a prognosis of death within 12 months of the effective date of the applicable coverage under this policy; sickness, injury or death if the plan is purchased after entering a hospice facility or receiving hospice treatment; any trip taken outside the advice of a physician; or a pre-existing medical condition, including death, that results therefrom (within the stated look-back period within your insurance policy). Additionally, this plan will not pay for any loss arising directly or indirectly out of, or as a result of, or from, or that occur to, or are as a result of the actions of, the following that occur to the insured: any amount paid or payable under any worker's compensation, disability benefit or similar law; a loss or damage caused by detention, confiscation, or destruction by customs; or medical treatment during a covered trip, or arising from a covered trip undertaken for the purpose or intent of securing medical treatment. The following additional exclusion applies to accidental death and dismemberment benefits: We will not pay for loss caused by or resulting from sickness of any kind. Please refer to your plan documents for a complete list of plan exclusions and limitations, as well as the definitions of capitalized terms used herein. The purchase of this product is not required in order to purchase any other travel product or service. Your travel retailer might not be licensed to sell travel insurance and will only be able to provide general information about the product. An unlicensed travel retailer may not answer questions about the terms and conditions of the insurance offered and may not evaluate the adequacy of your existing insurance coverage. The products offered provide insurance coverage that only applies during your covered trip. You may have insurance coverage from other sources that provide similar benefits but may be subject to different restrictions depending on the coverage. You may wish to compare the terms of the travel policy offered through Travelex with any existing life, health, home, and automobile insurance policies you may have. If you have questions about your coverage under your existing insurance policies, contact your insurer or insurance agent or broker. Any inquiry regarding claims may be directed to Zurich Travel Assist at [claims@zurichtravelassist.com](mailto:claims@zurichtravelassist.com), P.O. Box 968019, Schaumburg, IL 60196-8019; +1.800.501.4781. Inquiries regarding new, existing, or denied claims and any other claims questions may also be directed to this address. Consumers in California may also contact the California Department of Insurance Hotline +1.800.927.4357 or +1.213.897.8921. Travelex Insurance Services, Inc. CA Agency License #0D10209. Consumers in Maryland may contact the Maryland Insurance Administration +1.800.492.6116 or +1.410.468.2340. Insurance coverages underwritten by Zurich American Insurance Company, a New York domiciled company with its principal place of business at 1299 Zurich Way, Schaumburg, IL 60196 (NAIC # 16535). The terms and conditions of the policy described in this brief summary are governed by the individual policy document that contains the complete terms. In the event of any discrepancy between the information in this brief summary and the policy, the policy document shall govern. This is intended as a general description of certain types of insurance available to qualified customers, provided solely for informational purposes. Policy Form Series #U-TIIV-100-A CW, #U-TIIN-100/110-A CW, #U-TIGV-100-A CW, #U-TIGV-100-A CW; in DC #U-TIIV-100-A DC & #U-TIGV-100-A DC; in IN #U-TIIN-100/110-A IN & #U-TIGV-100-A IN; in KS #U-TIIN-110-A KS; in MN #U-TIIV-100-B MN & #U-TIGV-100-B MN; in MO #U-TIIN-110-A MO; in MT #U-TIIN-100/110 MT & #U-TIGV-100-A CW; in NH #U-TIIV-100-A NH; #U-TIIV-101-B NY, #U-TIIN-100 NY; in OR #U-TIIV-100-A OR; in VA #U-TIIV-100-A VA and #U-TIGV-100-A VA; in VT #U-TIIN-100/110-A VT. 10.23 GRPFLY3



Dream. Explore. Travel On.