

COMPANION PLANTING GUIDE

7 POPULAR FOODS TO GROW

With detailed information on
their best companion plants.

19 COMPANION PLANTING CHARTS

Also includes an additional companion
planting chart for 12 edible garden plants.

LET'S GROW
TOGETHER!
#organicbuildslife

CONTENT



19

Plants to Grow in your Garden

With companion plants to grow with them and those to avoid.

4
Companion Planting

8
Tomato Companion Plants
Chart, detailed description on plant benefits, and planting resources.

15
Carrot Companion Plants
Chart, detailed description on plant benefits, and planting resources.

20
Zucchini Companion Plants
Chart, detailed description on plant benefits, and planting resources.

25
Potato Companion Plants
Chart, detailed description on plant benefits, and planting resources.

29
Onion Companion Plants
Chart, detailed description on plant benefits, and planting resources.

35
Herb Companion Plants
Chart, detailed description on plant benefits, and planting resources.

40
Strawberry Companion Plants
Chart, detailed description on plant benefits, and planting resources.

47
Companion Planting Chart for 12 Additional Plants.

Organic Gardening:

Companion Planting

Give your plants the best possible environment to grow by implementing companion planting in your vegetable garden. Companion planting is an excellent way to improve the health and fruitfulness of your plants. Planting compatible plants near each other is mutually beneficial for your crops, as they can reap the rewards from each other's attributes.

In addition to adding benefits to your plants, companion planting makes for more efficient use of garden space, organically deters harmful pests, and acts as a living mulch to protect and feed the soil of your garden bed. The bio-diversity that companion planting provides is also excellent for pollinators, wildlife, and overall soil health.



Discerning what works well together and learning about the ways that individual plants can bolster others can significantly improve the productivity in your organic garden.

Organic Gardening:

Overall Garden Care

There are endless benefits to companion planting. It is important to note that companion planting does not replace the need for proper garden preparation and maintenance. Any successful garden thrives best with regular watering, regular feeding, essential light requirements, and nutrient-rich soil.

Remember that healthy soil means healthy roots for your plants, so it's best to put the time in to amend the soil in your garden before planting your companion garden to give it the best beginning. Raised bed mixes are available at your local garden center, which can be used to quickly fill your raised beds with the essential organic soil formula.

You can utilize your knowledge of companion planting in any garden method. Container gardening, backyard gardens, and raised beds are all ideal locations to implement this practice. The more you learn about what works well together, the more fun that you will have working to get the very best out of your overall garden.



Organic Gardening:

Plan For Your Planting Zone

Some of your vegetable garden's success will be directly related to what you plant in your garden and when you plant it. It is vital to know what grows best in your USDA grow zone and what will not thrive where you live.



The United States Department of Agriculture (USDA) Plant Hardiness Zone Map provides an informative view of average temperature trends across The United States and Canada. Zone Hardiness maps are based on the average yearly extremes for minimum temperatures in a given area.

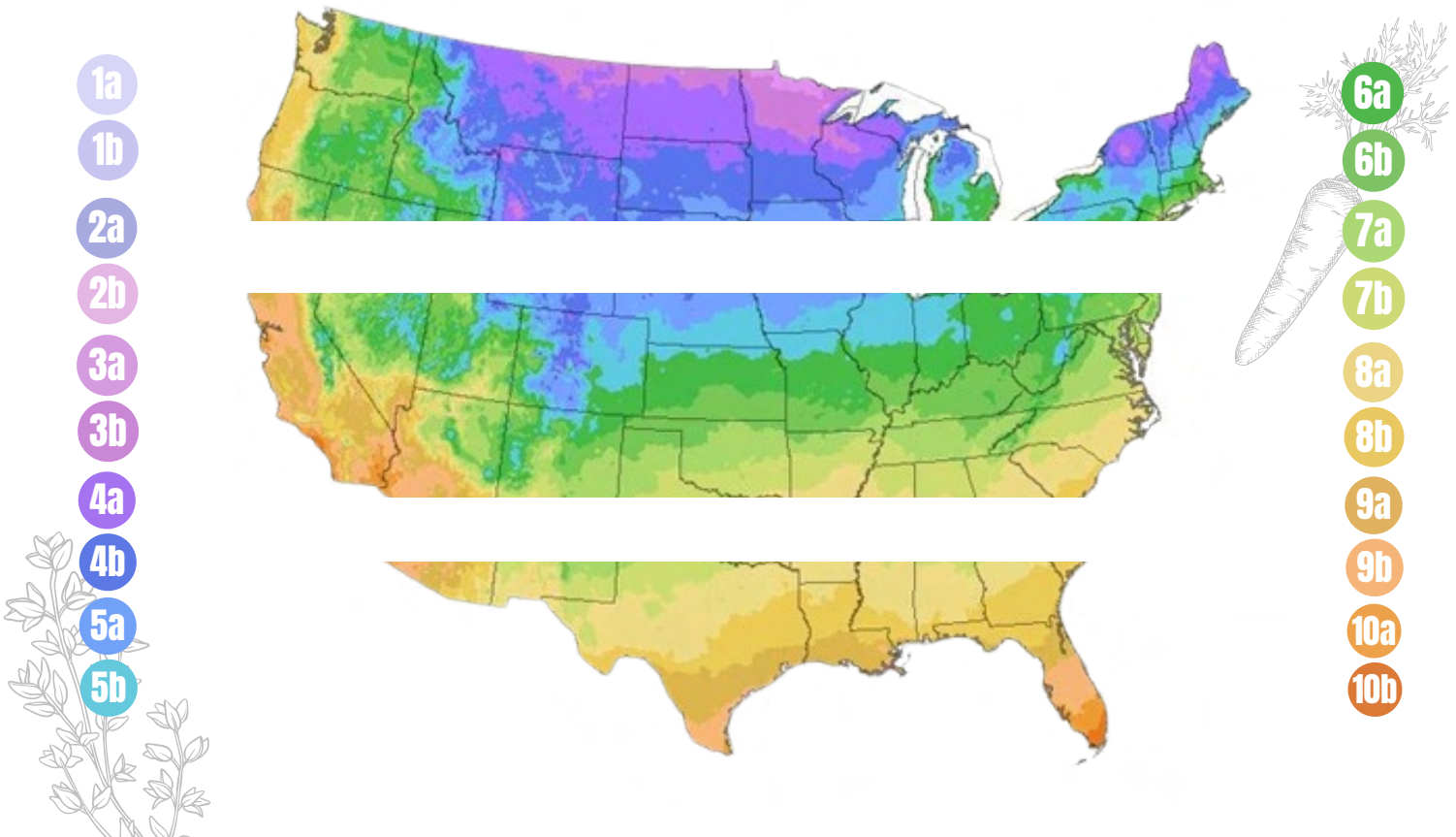
[CLICK HERE TO FIND YOUR ZONE](#)

The USDA Zone Hardiness Map is divided up into 13 planting zones. They are sectioned off by a 10-degree Fahrenheit differential for the average annual minimum temperatures. The larger the number is, the warmer the temperature is in the corresponding garden zone. For added clarity, zones are broken down into subsets of a and b, which represents a 5-degree differential in which a is colder than b is.

Organic Gardening:

Plan For Your Planting Zone

Whether you're growing vegetables, herbs, or flowers it's crucial to plan for your growing zone. Our Planting Charts for Zones 1-10 provide information on planning, planting, and harvesting specific to your region.



Organic Gardening:
Planting Chart - Vegetables

Plant	Zone	Start	End	Plant	Zone	Start	End	Plant	Zone	Start	End
Asparagus	1-10	Apr	May	Broccoli	1-10	Jul	Aug	Carrots	1-10	Jul	Aug
Beans	1-10	Apr	May	Cauliflower	1-10	Jul	Aug	Corn	1-10	Jun	Jul
Brussels Sprouts	1-10	Jul	Aug	Cucumbers	1-10	Jul	Aug	Cress	1-10	Jul	Aug
Cabbage	1-10	Jul	Aug	Eggplant	1-10	Jul	Aug	Fennel	1-10	Jul	Aug
Carrots	1-10	Jul	Aug	Kale	1-10	Jul	Aug	Garlic	1-10	Jul	Aug
Cauliflower	1-10	Jul	Aug	Leeks	1-10	Jul	Aug	Green Beans	1-10	Jul	Aug
Corn	1-10	Jun	Jul	Onions	1-10	Jul	Aug	Herbs	1-10	Jul	Aug
Cress	1-10	Jul	Aug	Parsnips	1-10	Jul	Aug	Peas	1-10	Jul	Aug
Fennel	1-10	Jul	Aug	Spinach	1-10	Jul	Aug	Pumpkins	1-10	Jul	Aug
Garlic	1-10	Jul	Aug	Squash	1-10	Jul	Aug	Tomatoes	1-10	Jul	Aug
Green Beans	1-10	Jul	Aug	Swiss Chard	1-10	Jul	Aug	Winter Squash	1-10	Jul	Aug
Herbs	1-10	Jul	Aug	Turnips	1-10	Jul	Aug				
Peas	1-10	Jul	Aug								
Pumpkins	1-10	Jul	Aug								
Tomatoes	1-10	Jul	Aug								
Winter Squash	1-10	Jul	Aug								

NOTES

RESOURCES

www.kelloggarden.com 28

Organic Gardening:
Planting Chart - Herbs

Plant	Zone	Start	End	Plant	Zone	Start	End
Basil	1-10	Apr	May	Chives	1-10	Apr	May
Chives	1-10	Apr	May	Cilantro	1-10	Apr	May
Cilantro	1-10	Apr	May	Dill	1-10	Apr	May
Dill	1-10	Apr	May	Garlic Chives	1-10	Apr	May
Garlic Chives	1-10	Apr	May	Herbs	1-10	Apr	May
Herbs	1-10	Apr	May	Leeks	1-10	Apr	May
Leeks	1-10	Apr	May	Onions	1-10	Apr	May
Onions	1-10	Apr	May	Parsnips	1-10	Apr	May
Parsnips	1-10	Apr	May	Spinach	1-10	Apr	May
Spinach	1-10	Apr	May	Swiss Chard	1-10	Apr	May
Swiss Chard	1-10	Apr	May	Turnips	1-10	Apr	May
Turnips	1-10	Apr	May				

NOTES

RESOURCES

www.kelloggarden.com 26

Organic Gardening:
Planting Chart - Companion Flowers

Plant	Zone	Start	End	Plant	Zone	Start	End
Alfalfa	1-10	Apr	May	Chives	1-10	Apr	May
Chives	1-10	Apr	May	Cilantro	1-10	Apr	May
Cilantro	1-10	Apr	May	Dill	1-10	Apr	May
Dill	1-10	Apr	May	Garlic Chives	1-10	Apr	May
Garlic Chives	1-10	Apr	May	Herbs	1-10	Apr	May
Herbs	1-10	Apr	May	Leeks	1-10	Apr	May
Leeks	1-10	Apr	May	Onions	1-10	Apr	May
Onions	1-10	Apr	May	Parsnips	1-10	Apr	May
Parsnips	1-10	Apr	May	Spinach	1-10	Apr	May
Spinach	1-10	Apr	May	Swiss Chard	1-10	Apr	May
Swiss Chard	1-10	Apr	May	Turnips	1-10	Apr	May
Turnips	1-10	Apr	May				

NOTES

RESOURCES

www.kelloggarden.com 27

Vegetable Planting Chart for Zones 1-10

Herb Planting Chart for Zones 1-10

Flower Planting Chart for Zones 1-10

COMPANION PLANTING GUIDE



TOMATO COMPANION PLANTS

- BASIL, BEANS, CARROTS, ONIONS, PEPPERS, CELERY, LEAF LETTUCE
- ROOT VEGETABLES, PARSLEY, BORAGE, MARIGOLDS
- AVOID - CABBAGE, BROCCOLI, FENNEL, CORN

PLANT	DAYS TO MATURITY	PLANT SPACING	PLANT DEPTH	MIN. SOIL TEMP.	DIRECT SOW OR TRANSPLANT	WHEN TO PLANT
Carrots	70 - 80	12 - 18 in.	2 in.	60° F.	DS	Soil is workable
Lettuce	60 - 85	10 - 12 in.	1/2 in.	50° F.	TP	After last frost
Onion	100 - 120	4 - 6 in.	3/4 in.	50° F.	DS	After last frost
Bean - Bush	50 - 60	2 - 4 in.	1 - 1.5 in.	70° F.	DS	After last frost
Bean - Pole	65 - 75	6 - 12 in.	1 - 1.5 in.	70° F.	DS	After last frost
Peppers	65 - 80	18 - 24 in.	1/4 in.	65° F.	TP	After last frost

HERB	GROWTH TYPE	PROPOGATION METHOD	PLANT SPREAD	MIN. SOIL TEMP	DIRECT SOW OR TRANSPLANT	WHEN TO PLANT
Parsley	Biennial	Seeds	6 - 8 in.	70°F.	DS or TP	Soil is workable
Basil	Annual	Seed, Transplants	12 in.	70° F.	DS or TP	After last frost
Borage	Annual, Biennial	Seed, Cuttings	12 in.	60° F.	DS	After last frost
Chives	Perennial	Seed, Division	18 in.	65° F.	DS or TP	Soil is workable

RESOURCES

[BEST WAY TO PLANT TOMATOES: TIPS FOR NEW TOMATO GROWERS](#)

[BEST WAYS TO PLANT TOMATOES IN BUCKETS AND GROW BAGS](#)

[THE WORLD OF COLORFUL CHERRY TOMATOES](#)

[DIFFERENCE BETWEEN GARDEN SOIL AND RAISED BED SOIL](#)

[WHAT IS THE BEST ORGANIC FERTILIZER FOR MY VEGETABLE GARDEN?](#)

[TIPS FOR HARVESTING & STORING SUMMER SQUASH & SUMMER CROPS](#)

Best Tomato Companion Plants

Basil

Plant several plants of basil around the base of your tomato plants. Not only does this delicious and fragrant herb naturally repel destructive pests like aphids, hornworms, and spider mites, but basil will actually enhance the flavor of your juicy tomato crop.

Beans

Beans make a great companion plant for tomatoes because they can climb up the tomato plant stalk. Beans also release nitrogen back into the soil as they grow. This is ideal because tomato plants are heavy feeders of nitrogen, and the bean plants act as a natural fertilizer in the garden.



Carrots

Carrots grow deep into the soil, and as they grow, they can break up the soil, allowing essential nutrients, water, and oxygen to permeate the roots of the tomato plants.

Best Tomato Companion Plants

Onions

These pungent vegetables make great tomato companion plants. Their unappealing odor is a natural deterrent of many garden pests that feed on tomato plants.

Peppers

Tomatoes and peppers are really like sister plants in the garden. Intermixing these two high yielding producers in your vegetable garden eases your gardening work because they have very similar requirements for light, water, fertilization, and pest control.

Celery

The loose root system of celery plants encourages earthworms and other beneficial insects to permeate the garden soil around the roots of your tomato plants. Consequently, the worms release nutrients back into the soil as they thrive in the garden, which improves the overall health of the soil in your tomato garden.



Organic Gardening:

Best Tomato Companion Plants

Leaf Lettuce

Plant lettuce varieties in the vacant spots in your garden bed. The shade-loving plants will enjoy the cover that tall tomato plant provide and the low growing lettuce will act as a living mulch, protecting the soil from erosion, nutrient depletion, and regulate soil moisture.



Root Vegetables

A wide variety of root vegetables make ideal tomato companion plants because they rely heavily on phosphorous to develop strong root systems. With tomato plants feeding heavily on nitrogen from the garden soil, the root vegetables can focus more on root development than on greenery. Root vegetables coexist well in the garden together because they do not compete with each other for soil nutrients.

Parsley

Attract hoverflies to your vegetable garden by inserting some parsley plants around the bed. These beneficial insects feed on many of the destructive garden pests that seek out and destroy tomato crops.

Organic Gardening:

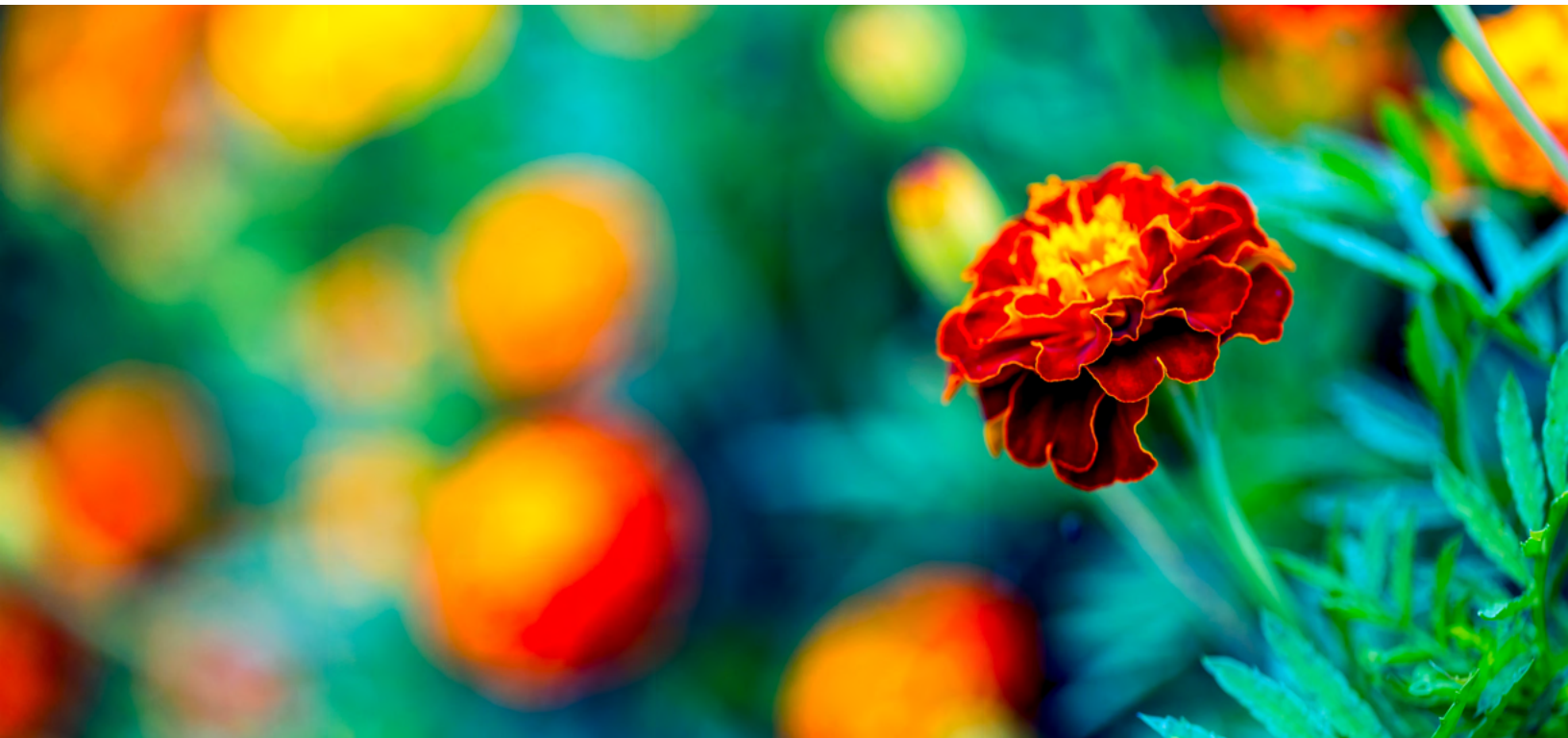
Best Tomato Companion Plants

Borage

Plant some borage as a tomato companion plant in your garden to bolster the overall health of your garden which, like basil, can add superior flavor quality to your ripened tomatoes. As an added bonus, borage is an organic repellent of hornworms and cabbage worms.

Marigolds

Scatter vibrant marigolds in your vegetable garden. Not only do they add color and cheer, but they can counteract root rot on tomato vines caused by destructive nematodes, tomato worms, and slugs.





Plants to Avoid in a Tomato Garden

As important as it is to know what plants work cohesively in a vegetable garden, it is equally important to understand what plants do not make good tomato companion plants.

Tomatoes just do not work well with all crops, and a poor combination might diminish your yield and affect the health of your tomatoes.

Avoid this short list of plants that can bestow adverse effects on your hard-earned tomato crop.

Cabbage and Broccoli

Cabbage and members of the Cabbage family of plants can inhibit the growth of tomato plants.

Fennel

This tricky plant releases a substance from its root system that impeded the growth of tomatoes and many other plants. It's best to plant this plant in a pot instead of placing them in a companion bed with other crops.

Corn

The destructive earworm pest is the equivalent of the tomato fruit-worm. Planting plants together that are susceptible to the same pests can decimate an entire garden.



Organic Gardening:

Gardening Videos

Take a deeper dive into organic gardening by visiting the Kellogg Garden Youtube channel. Learn about the different types of tomatoes to grow, how to start seeds successfully, and how to build a DIY tomato cage plus other versatile trellises.



[11 GARDEN TRELLIS IDEAS](#)



[5 SEED STARTING HACKS](#)



[HOW I GREW 150 POUNDS OF TOMATOES](#)



[HOW TO BUILD A TOMATO CAGE](#)

VIEW MORE VIDEOS

Join us on  YouTube

COMPANION PLANTING GUIDE



CARROT COMPANION PLANTS

- LEEKS, FLAX, ONION, ROSEMARY, SAGE, CHIVES
- AMARANTH, LETTUCE, LEAFY GREENS, TOMATOES
- AVOID - DILL, CILANTRO, PARSNIPS

PLANT	DAYS TO MATURITY	PLANT SPACING	PLANT DEPTH	MIN. SOIL TEMP.	DIRECT SOW OR TRANSPLANT	WHEN TO PLANT
Tomatoes	70 - 85	24 - 36 in.	2 in.	60° F.	TP	After last frost
Lettuce	60 - 85	10 - 12 in.	1/2 in.	50° F.	TP	After last frost
Onion	100 - 120	4 - 6 in.	3/4 in.	50° F.	DS	After last frost
Leafy Greens	50 - 60	2 - 4 in.	1 - 1.5 in.	60° F.	DS	After last frost
Leeks	50 - 75	6 in.	1/4 in.	60° F.	DS or TP	After last frost
Flax	65 - 80	18 - 24 in.	1/4 in.	65° F.	TP	After last frost

HERB	GROWTH TYPE	PROPOGATION METHOD	PLANT SPREAD	MIN. SOIL TEMP	DIRECT SOW OR TRANSPLANT	WHEN TO PLANT
Rosemary	Perennial	Seed, Cuttings	48 in.	70° F.	DS or TP	Soil is workable
Sage	Perennial	Seed, Transplants	30 in.	60° F.	DS or TP	After last frost
Amaranth	Annual	Seed	6 ft. tall	60° F.	DS or TP	After last frost
Chives	Perennial	Seed, Division	18 in.	65° F.	DS or TP	Soil is workable

RESOURCES

[HOW TO GROW CARROTS: TIPS FOR NEW CARROT GROWERS](#)

[BLACK CARROTS, CIRCLE CARROTS, PURPLE CARROTS GALORE!](#)

[ROOT VEGETABLES AND GREENS FOR THE CHEF'S GARDEN](#)

[BENEFITS OF GROWING YOUR OWN FOOD](#)

[SOIL STRUCTURE FOR A HEALTHY GARDEN](#)

[FUN FOODS TO FERMENT](#)

Best Companion Plants for Carrots

Here is a robust list of plants that will offer some pest protection for your carrot plants and help you grow the very best carrots. Plant them alongside carrot plants and enjoy the many benefits of companion planting.

Leeks

Leeks release an odor that helps to repel carrot flies. Carrot flies are a nemesis of carrot plants. They lay their eggs on carrot leaves, and the eggs hatch into larvae that feed on carrots.

Flax

Flax plants produce an oil that has been said to protect root vegetables such as carrots from some harmful garden pests.



Onion

These pungent vegetables make great carrot companion plants. Their unappealing odor is a natural deterrent of many garden pests that feed on carrots. Onions can be a useful deterrent of a common carrot seeking pest called the carrot fly.

Herb Companion Plants for Carrots

Rosemary

Rosemary is an herb that also has a strong scent. This aromatic plant can mask the smell of carrots in the garden and make it harder for carrot flies to find carrot plants to lay their eggs on.

Sage

Sage is another one of those herbs that emits a strong odor and has also been successful in masking the sweet scent of carrots in the garden, making it more difficult for carrot flies to find carrot plants.



Chives

Chives are a herb that does double the work of most companion plants. Not only can growing chives in close proximity to your carrots improve their flavor, but they also shield carrots from unwanted destructive pests.



More Companion Plants for Carrots

Lettuce and Other Salad Greens

Lettuce and other leafy greens can help to loosen the soil, forging a path for its companion plant, carrots. Carrots and lettuce can also thrive in similar cool-weather times of the year, making these garden partners perfect for harvesting salads.

Tomatoes

There is some debate about whether tomato plants help or hurt the carrot plant when planted together in the garden bed. While it is true that tomatoes may release high amounts of nitrogen into the soil and can potentially stunt the growth of carrots, it can also be said that they also can make friendly neighbors. Tomato plants are tall growing plants that can protect lower growing, cool growing, carrots from the intense heat of the summer sun. Tomato plants have also been known to enhance the flavor of carrots. Lastly, they release a natural substance called solanine that may target pests that afflict their carrot neighbors.

Conversely, carrots give back to their neighboring tomato plants by aerating the garden soil around tomato plant roots. This assists the plant in moisture and nutrient absorption, leading to more vigorous plants and more productive yields.



Organic Gardening:

Plants to Avoid in your Carrot Bed



Just as some plants make great companions in the garden, some plants are not the best of friends in the garden. Luckily for carrots, there are only a few that don't make the cut when it comes to companion plants.

Dill and Cilantro

Unfortunately, dill and cilantro produce certain compounds that can harm your carrot plants, so it is best to avoid them in the garden.

Parsnips

When it comes to parsnips, they attract similar pests and diseases that carrots do. It is best to separate these crops to protect your carrots from an infestation of these garden pests.

COMPANION PLANTING GUIDE



ZUCCHINI COMPANION PLANTS

- BORAGE, BEANS, PEAS, RADISH, GARLIC, CORN
- SPINACH, PARSLEY, MINT, NASTURTIUMS
- AVOID - PUMPKINS, POTATOES

PLANT	DAYS TO MATURITY	PLANT SPACING	PLANT DEPTH	MIN. SOIL TEMP.	DIRECT SOW OR TRANSPLANT	WHEN TO PLANT
Corn	80 - 100	12 - 18 in.	2 in.	60° F.	DS or TP	Soil is 55° F
Peas	60 - 80	1 - 6 in.	1.5 - 2 in.	50° F.	DS	Soil is workable
Spinach	40 - 45	2 - 4 in.	1/8 - 1/4 in.	45° F.	DS	Soil is workable
Garlic	100 - 120	6 in.	3 - 4 in.	55° F.	DS	After last frost
Bean - Bush	50 - 60	2 - 4 in.	1 - 1.5 in.	70° F.	DS	After last frost
Bean - Pole	65 - 75	6 - 12 in.	1 - 1.5 in.	70° F.	DS	After last frost
Radish	25 - 30	1 in.	1/2 in.	55° F.	DS	Soil is workable

HERB	GROWTH TYPE	PROPOGATION METHOD	PLANT SPREAD	MIN. SOIL TEMP	DIRECT SOW OR TRANSPLANT	WHEN TO PLANT
Parsley	Biennial	Seed, Cuttings	6 - 8 in.	70° F.	DS or TP	Soil is workable
Mint	Perennial	Seed, Transplants	12 in.	70° F.	DS or TP	After last frost
Borage	Annual, Biennial	Seed, Division	12 in.	60° F.	DS	After last frost
Nasturtiums	Perennial	Seed	10 - 12 in.	55° F.	DS	After last frost

RESOURCES

[HOW TO GROW ZUCCHINI: TIPS FOR NEW ZUCCHINI GROWERS](#)

[HOW TO GROW SQUASH: PLUS 6 SQUASH VARIETIES YOU HAVE TO TRY](#)

[7 WAYS TO CREATE A VERTICAL GARDEN](#)

[ATTRACT POLLINATORS WITH A WILDFLOWER GARDEN](#)

[HOW TO WATER YOUR GARDEN WITHOUT A HOSE](#)

[ORGANIC PEST CONTROL: BRINGING IN THE GOOD BUGS](#)

Best Zucchini Companion Plants

Borage

Borage is an herb that works double duty as zucchini companion plants in the garden. Not only does borage repel voracious insects, but it also attracts beneficial bugs and honeybees to pollinate your zucchini flowers.

Beans

Bush beans work well to repel garden beetles and other pests that bore into zucchini plants and vines. Beans also release beneficial nitrogen back into the soil as they grow, which feeds nearby zucchini and boosts their fruit production.



Radishes

Radishes make a great companion to zucchini because they deter squash vine borers and beetles from making their way into the zucchini patch. These destructive pests will quickly cause demise in your crop if not kept at bay.

Best Zucchini Companion Plants

Garlic

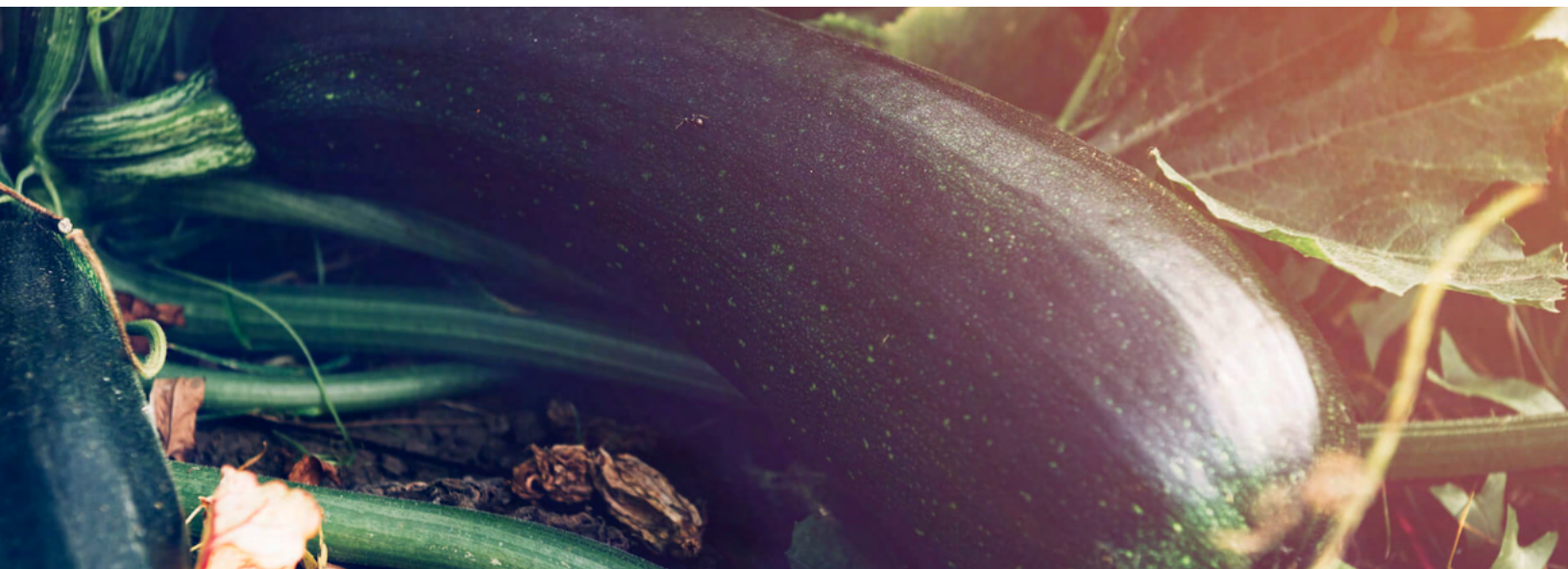
Garlic dissuades damaging aphids from the garden area, which have been known to wreak havoc on zucchini and their leaves.

Parsley

Parsley is a fragrant herb that works to deter pests that tend to plague the zucchini garden.

Spinach

Spinach and zucchini are mutually beneficial to each other. Zucchini provides protection and shade from the heat of summer, and zucchini reaps the benefits of the nutrients that spinach releases back into the soil.



Best Zucchini Companion Plants

Peas

Peas, much like bean plants, release beneficial nitrogen back into the soil, which helps zucchini grow because they are heavy feeders. This exchange helps to counteract soil depletion.

Corn

Corn assists in keeping destructive vine borers out of the garden.

Mint

Mint can drive away tiny aphids that feed on zucchini and other veggies.



Nasturtiums

Nasturtiums are a colorful and vibrant addition to any garden, and they attract beneficial pollinators to the garden. The nasturtium plant is adored by the highly destructive pest, the aphid. Through smart companion planting, you can purposefully use the nasturtium plant as a host and sacrifice them to help protect nearby plants that are bothered by aphids..

Organic Gardening:

Poor Zucchini Companion Plants



Pumpkins

Pumpkins and squash are from the same family and can cross-pollinate with each other, resulting in poorly formed fruit.

Potatoes

It is not a good idea to plant potatoes with zucchini plants because both plants are prone to the same garden pests, and interplanting them makes them more susceptible to infestation. In addition, potatoes are heavy feeders that can deplete large amounts of nutrients from the soil.



COMPANION PLANTING GUIDE



POTATO COMPANION PLANTS

- SPINACH, LETTUCE, BASIL, PARSLEY
- CABBAGE, CORN, BEANS, THYME, CORRIANDER
- AVOID - ROOT CROPS

PLANT	DAYS TO MATURITY	PLANT SPACING	PLANT DEPTH	MIN. SOIL TEMP.	DIRECT SOW OR TRANSPLANT	WHEN TO PLANT
Corn	80 - 100	12 - 18 in.	2 in.	60° F.	DS or TP	Soil is 55° F
Lettuce	60 - 85	10 - 12 in.	1/2 in.	50° F.	TP	After last frost
Spinach	40 - 45	2 - 4 in.	1/8 - 1/4 in.	45° F.	DS	Soil is workable
Cabbage	65 - 80	10 - 18 in.	1/2 in.	60° F.	DS or TP	After last frost
Bean - Bush	50 - 60	2 - 4 in.	1 - 1.5 in.	70° F.	DS	After last frost
Bean - Pole	65 - 75	6 - 12 in.	1 - 1.5 in.	70° F.	DS	After last frost

HERB	GROWTH TYPE	PROPOGATION METHOD	PLANT SPREAD	MIN. SOIL TEMP	DIRECT SOW OR TRANSPLANT	WHEN TO PLANT
Parsley	Biennial	Seed, Cuttings	6 - 8 in.	70° F.	DS or TP	Soil is workable
Basil	Annual	Seed, Transplants	12 in.	70° F.	DS or TP	After last frost
Thyme	Perennial	Seed, Cuttings	7 - 12 in.	70° F.	DS or TP	After last frost
Nasturtiums	Perennial	Seed	10 - 12 in.	55° F.	DS or TP	After last frost

RESOURCES

[BEST WAYS TO PLANT POTATOES IN A GARDEN](#)

[BEST AND EASIEST WAYS TO PLANT CORN](#)

[TOP 5 HEALTHY GREENS TO GROW](#)

[HOW TO START A SUSTAINABLE GARDEN](#)

[HOW AND WHEN TO TEST YOUR SOIL PH](#)

[HOW TO PROPERLY WATER YOUR GARDEN WITH WATER SYSTEMS](#)

Best Potato Companion Plants

Knowing what are good neighbors in your garden is a vital part of both planning and success when it comes to gardening. Potatoes are no exception to this. While we know that they like to be moved around each year in order to promote a healthy crop, it is also important to know who they prefer to live next door to and how to best promote healthy conditions for everything involved as well as know what plants to avoid having nearby.

Potatoes are deep-rooting plants, thus many gardeners prefer to pair them with plants that will not interfere with their root system. Excellent choices in that vein would include:

Spinach
Lettuce

Basil
Parsley

Other plants to include on this list are those that are believed to enhance the flavor profile of the potatoes such as:

Cabbage

Corn

Beans



Organic Gardening:

Best Potato Companion Plants

And still, other plants are considered good neighbors because they help to increase the nitrogen level of the soil, aiding in the success of the potato crop. Plants that fit this description include:

Beans

Legumes

While potatoes do not generally like to compete with other root crops, horseradish is actually considered an excellent companion plant for potatoes. Because it is a natural pest and disease repellent, **horseradish** aids in maintaining a healthy potato crop as well as lending a helping hand with soil pH.



Always remember that gardening is as much trial and error as it is expertise and experience. You may find that one companion plant does very well with your potato crop one year, and the next year it fails. Trying different rotations and plants every year will increase the potential for success as well as keep your soil healthy year after year.

Organic Gardening:



Best Herb & Flower Potato Companion Plants

While basil and parsley already made the list previously, several other flowers and herbs make the cut when it comes to companion planting for potatoes. Often, a variety of nearby herbs and flowers attract helpful bugs and repel harmful ones (isn't Mother Nature brilliant in that way!). The best flower and herb options near potatoes are:

Chamomile

Marigold

Coriander

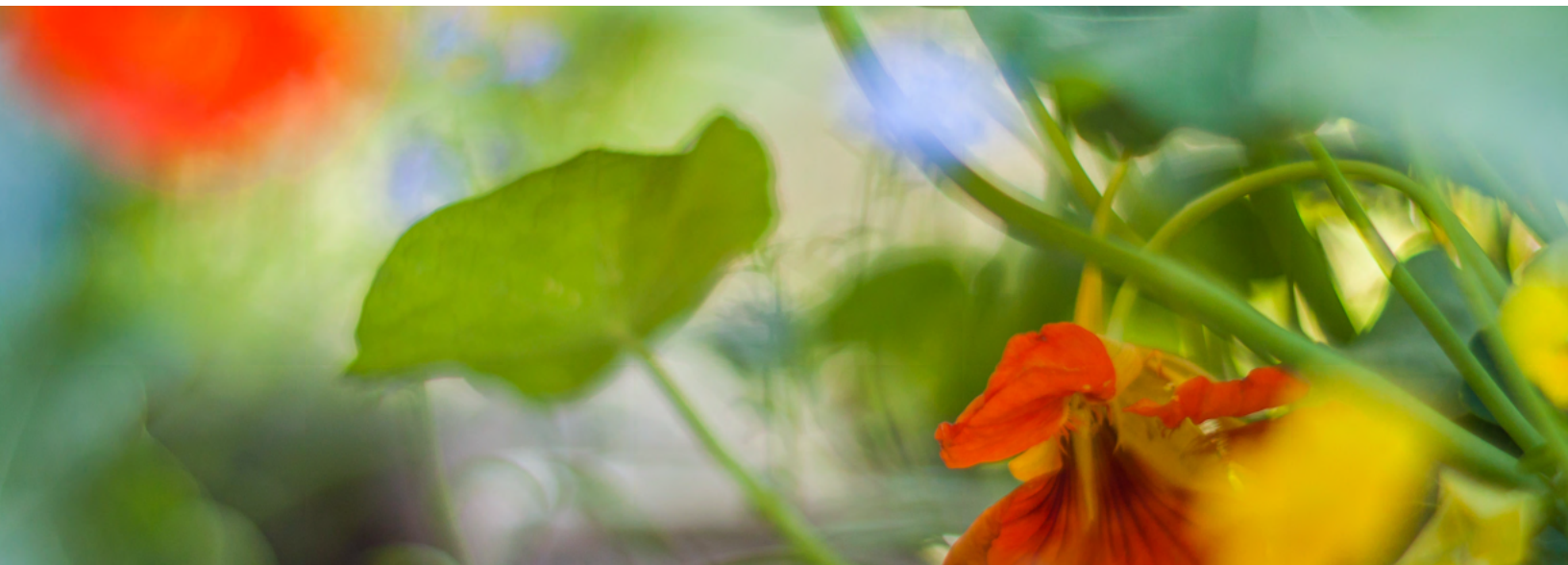
Catnip

Thyme

Petunias

Nasturtium

Not only will these companion flowers and herbs aid in a healthy and bountiful potato crop, they will add visual appeal and several savory herb options to your garden.



COMPANION PLANTING GUIDE



ONION COMPANION PLANTS

- KALE, BRUSSELS SPROUTS, CABBAGE, BROCCOLI
- SPINACH, PEPPERS, PARSLEY, MINT, NASTURTIUMS
- AVOID - PEAS, BEANS, LEEKS, GARLIC

PLANT	DAYS TO MATURITY	PLANT SPACING	PLANT DEPTH	MIN. SOIL TEMP.	DIRECT SOW OR TRANSPLANT	WHEN TO PLANT
Kale	50 - 70	10 - 18 in.	1/4 - 1/2 in.	70° F.	DS or TP	After last frost
Brussels Sprouts	50 - 70	18 - 24 in.	1/4 - 1/2 in.	65° F.	DS or TP	Soil is workable
Cabbage	65 - 80	10 - 18 in.	1/2 in.	60° F.	DS or TP	After last frost
Broccoli	60 - 80	10 - 16 in.	1/4 - 1/2 in.	65° F.	DS or TP	After last frost
Spinach	60 - 85	2 - 4 in.	1/8 - 1/4 in.	45° F.	DS	Soil is workable
Peppers	65 - 80	18 - 24 in.	1/4 in.	65° F.	TP	After last frost

HERB	GROWTH TYPE	PROPOGATION METHOD	PLANT SPREAD	MIN. SOIL TEMP	DIRECT SOW OR TRANSPLANT	WHEN TO PLANT
Parsley	Biennial	Seed, Cuttings	6 - 8 in.	70° F.	DS or TP	Soil is workable
Mint	Perennial	Seed, Transplants	12 in.	70° F.	DS or TP	After last frost
Nasturtiums	Perennial	Seed	10 - 12 in.	55° F.	DS	After last frost

RESOURCES

[BEST WAYS TO PLANT ONION BULBS AND SETS](#)

[PICK A PEPPER! UNIQUE PEPPERS TO GROW](#)

[BEST WAY TO PLANT PEPPERS](#)

[USING FABRIC GROW BAGS FOR CONTAINER GARDENING](#)

[THE IMPORTANCE OF GARDEN WORMS](#)

[FUN FOODS TO FERMENT](#)

Best Onion Companion Plants

Starting with the very best options for onion companion plants are the many options available in the cabbage family. Some of the most popular and versatile cabbage family members are:

Kale
Brussels Sprouts

Broccoli
Cabbage

Each of these options, or all of them, are perfect companions for onions. Similar to onions, these vegetables prefer being rotated each year. Plants in the cabbage family do their best work in similar soil conditions as onions. Most cruciferous plants prefer sunny garden spots with well-drained soil, just like onions. They also benefit from a quality organic nitrogen rich fertilizer.

Additionally, because onions are so wonderful at acting as natural pest repellents, they serve as guardians for those in the cabbage family, which are often susceptible to pests like:

Cabbage Worms

Loopers

Cabbage Maggots



Organic Gardening:

Companion Plants to Deter Pests



Other good neighbor options for onions include: tomatoes, lettuces, strawberries (strange but true! And no, it will not make your strawberries taste like onions or vice versa!), **peppers**, **parsnip** and **spinach**. Because onions naturally deter pests like **aphids**, **beetles** and even **rabbits**, they offer organic protection to those listed above.

If you begin to notice these visible above ground pests, consider spraying your plants with a natural and organic pest repellent. These can be found at almost any garden supply store, but they are also easy to make in your own kitchen.

Spraying your plants with a homemade mixture of emulsified garlic, onion and water can drastically reduce the invasion of many garden pests. Others are faithful to a simple combination of two tablespoons of hot pepper flakes steeped in one cup of water in a spray bottle.

Whatever method of pest repellent you subscribe to, always approach your applications with the mantra “less is more” as you can easily burn (similar to a chemical burn) your plants, especially the more delicate leaf plants.

Organic Gardening:

Herb Companion Plants

Another consideration for excellent onion partnerships are herbs. Adding herbs to any garden elevates neighboring plants. When it comes to onions, the list of herbs that play nicely next door is certainly more extensive than those that don't.

Chives are also not advised near onions. Chives are close relatives of the onion/garlic family and for the same reasons other members of the family aren't good neighbors, chives fall into that category as well.

That said, there are many popular and easy to grow herbs that thrive with onions.

Dill
Savory

Parsley
Chamomile

(yes, those delicate, sweet chamomile flowers love living with onions!) are all excellent choices for your onion beds.)



Organic Gardening:

Plants that will not Thrive with Onions



As a natural pest deterrent, onions have a fairly long list of good companion plants. In fact, it may be better to first consider those plants that will not thrive near onions, or in the reverse, will impact an onion's success.

Overall, onions are very good neighbors, however other onion plants such as **leeks**, **garlic** and **shallots** can attract **onion maggots**.

Onion maggots travel easily from plant to plant, so planting these like species in near proximity can give these pesky pests a multi-lane highway throughout your onion patch.

Additionally, most varieties of **peas** and **beans** can be harmful when planted in close proximity to onions.

Lastly, it is wise to avoid **sage** and **asparagus** for the same reasons.

Organic Gardening: Gardening Videos

Take a deeper dive into organic gardening and companion planting by visiting the Kellogg Garden Youtube channel. Learn more about the best ways to companion plant in the garden, how to successfully use row covers, and the most effective ways to plan and plant your garden each year.



[BEGINNERS GUIDE TO COMPANION PLANTING](#)



[GROW FOOD & COMPANION PLANT IN CONTAINERS](#)



[PROTECTING PLANTS WITH ROW COVERS](#)



[CROP ROTATION & GARDEN PLANNING FOR PLANT HEALTH & PEST CONTROL](#)

VIEW MORE VIDEOS

[Join us on](#)  **YouTube**

COMPANION PLANTING GUIDE



POTTED HERB COMPANION PLANTS

- THYME ROSEMERRY, SAGE
- BASIL, PARSLEY, CHIVES
- CILANTRO, PARSLEY, LEMON BALM

HERB	GROWTH TYPE	PROPOGATION METHOD	PLANT SPREAD	MIN. SOIL TEMP	DIRECT SOW OR TRANSPLANT	WHEN TO PLANT
Basil	Annual	Seed, Transplants	12 in.	70° F.	DS or TP	After last frost
Caraway	Biennial	Seed, Cuttings	8 - 12 in.	60° F.	DS or TP	After last frost
Catnip	Perennial	Seed, Cuttings	18 - 24 in.	60° F.	DS or TP	After last frost
Chervil	Annual, Biennial	Seed	8 in.	55° F.	DS	After last frost
Chives	Annual, Perennial	Seed, Division	18 in.	60° F.	DS or TP	After last frost
Cilantro	Perennial	Seeds, Dividing	6 - 8 in.	50° F.	DS or TP	After last frost
Curry	Perennial	Seeds, Cutting	6 - 8 in.	65° F.	DS or TP	After last frost
Hyssop	Perennial	Seed, Division, Cuttings	6 - 12 in.	65° F.	DS or TP	After last frost
Lemon Balm	Perennial	Seed, Division, Cuttings	18 in.	70° F.	DS or TP	After last frost
Marjoram	Perennial	Seed, Division, Cuttings	15 - 18 in.	70° F.	DS or TP	After last frost
Mint	Perennial	Seed, Transplants	12 in.	70° F.	DS or TP	After last frost
Oregano	Perennial	Seed, Division, Cuttings	18 in.	70° F.	DS or TP	After last frost
Parsley	Biennial	Seed, Cuttings	6 - 8 in.	70° F.	DS or TP	Soil is workable
Rosemary	Perennial	Seed, Division, Cuttings	48 in.	70° F.	DS or TP	After last frost
Sage	Perennial	Seed, Division, Cuttings	30 in.	60° F.	DS or TP	After last frost
Savory	Annual	Seed	8 in.	60° F.	DS or TP	After last frost
Thyme	Perennial	Seed, Cuttings	7 - 12 in.	70° F.	DS or TP	After last frost

RESOURCES

[HOW TO GROW CARROTS: TIPS FOR NEW CARROT GROWERS](#)

[BLACK CARROTS, CIRCLE CARROTS, PURPLE CARROTS GALORE!](#)

[ROOT VEGETABLES AND GREENS FOR THE CHEF'S GARDEN](#)

[BENEFITS OF GROWING YOUR OWN FOOD](#)

[SOIL STRUCTURE FOR A HEALTHY GARDEN](#)

[FUN FOODS TO FERMENT](#)

Organic Gardening:

Potted Herb Beginnings

Many of us have received those adorable windowsill herb garden kits as holiday gifts or have simply been experimental countertop herb growers for years, but did you know there can be a method to the madness of herbs in pots?

Before you have trails of thyme taking over your kitchen and choking out the delicate dill it is potted with, consider some of these points and tips as you plan your potted herbs.

Optimal Herb Planting

Before you start to map out who lives where in your herb pots, whether you plan to place the pots outdoors or indoors, keep these basics in mind. While most herbs prefer slightly arid soil, some are water lovers.

For the majority, a layer of rock or other drainage material in the bottom of your pot before topping it with a quality organic potting soil is essential to maintain optimal moisture levels. Those that love moisture won't like being planted with dry loving herbs.

Herbs, especially the culinary ones we are most likely to plant, are sun lovers. If you plan to place your pots on a shady back deck, your outcome won't be as successful as full sun exposure. Likewise, if you are planting your potted herbs indoors, look for your most sun-drenched window areas.



Organic Gardening:

Potted Herb Companion Plants

Herbs that tend to prefer moist soil over arid are:

Basil

Parsley

Catnip

Chervil

Chives

Cilantro

Lemon Balm

Mint

Herbs that tend to prefer dryer soil include:

Thyme

Sage

Savory

Hyssop

Curry

Caraway

Rosemary

Marjoram

Oregano



Taking into consideration the size of your containers, planting two to five varieties in the same container can not only lead to wonderful, fresh, ready to use herbs for cooking, but can also add a beautiful aesthetic to your home or planter garden.

Organic Gardening:

Potted Herb Companion Plants

When thinking about herb pairings, you will want to plant herbs together that not only have the same soil requirements, but that also tend to vary in height. In other words, plant herbs that grow taller with those that tend to bush out a bit and/or trailing herbs.

Excellent pairings for this approach could include:

**Creeping Thyme, Rosemary, Sage
Basil, Italian Parsley, Chives**

**Oregano, Lemon Thyme, Savory
Cilantro, Parsely, Lemon Balm**

Really, the pairings largely depend on what you want to grow and the soil content. The sky is the limit once you know what you want and will use.



Organic Gardening:

Potted Herb Companion Plants



Things to Keep in Mind:

Most **Mint** varieties have a tendency to take over a pot, and therefore may do best potted alone.

Consider **flavor** profiles when companion planting. Common sense prevails here. A great rule of thumb is: If you would not combine them in cooking, don't plant them together either.

Harvesting your potted herbs only as you need them will help your herbs continue to grow. Think of it like pruning. As you cut what you need, new growth ensues. If you begin to notice one herb choking out its neighbors, cut the overzealous herb back by at least half in order to prevent a takeover.

Potted herbs can last through more than one season if properly cared for. In warmer climates, many potted herbs will last outdoors year round, as several are somewhat frost tolerant. If grown indoors, many varieties can last for two years or more, depending on care.

COMPANION PLANTING GUIDE



STRAWBERRY COMPANION PLANTS

- ASPARAGUS, BEANS, BORAGE, CHIVES, ONIONS
- SPINACH, THYME, SAGE
- AVOID - CABBAGE, POTATOES, TOMATOES

PLANT	DAYS TO MATURITY	PLANT SPACING	PLANT DEPTH	MIN. SOIL TEMP.	DIRECT SOW OR TRANSPLANT	WHEN TO PLANT
Asparagus	360 - 730	30 - 36 in.	6 in.	50° F.	DS or TP	Soil is workable
Spinach	40 - 45	2 - 4 in.	1/8 - 1/4 in.	45° F.	DS	Soil is workable
Onion	100 - 120	4 - 6 in.	3/4 in.	50° F.	DS	After last frost
Bean - Bush	50 - 60	2 - 4 in.	1 - 1.5 in.	70° F.	DS	After last frost
Bean - Pole	65 - 75	6 - 12 in.	1 - 1.5 in.	70° F.	DS	After last frost

HERB	GROWTH TYPE	PROPOGATION METHOD	PLANT SPREAD	MIN. SOIL TEMP	DIRECT SOW OR TRANSPLANT	WHEN TO PLANT
Parsley	Biennial	Seed, Cuttings	6 - 8 in.	70° F.	DS or TP	Soil is workable
Mint	Perennial	Seed, Transplants	12 in.	70° F.	DS or TP	After last frost
Borage	Annual, Biennial	Seed, Division	12 in.	60° F.	DS	After last frost
Chives	Annual, Perennial	Seed, Division	18 in.	60° F.	DS or TP	After last frost
Yarrow	Perennial	Seed, Division	12 - 24 in.	60° F.	DS or TP	After last frost

RESOURCES

[GROWING STRAWBERRIES: IN-GROUND VS RAISED BEDS](#)

[HOW TO START A FRUIT GARDEN](#)

[EDIBLE GROUND COVER PLANTS](#)

[FLOWERS TO ATTRACT BEES AND BUTTERFLIES TO YOUR GARDEN](#)

[DIFFERENCE BETWEEN POTTING MIX AND RAISED BED SOIL](#)

[HOW AND WHEN TO MULCH A GARDEN](#)

Organic Gardening:

Strawberry Companion Plants

When it comes to the sweet plump, succulent fruit of strawberry plants, garden pests are just as enamored with them as humans are. Luckily, there are lots of plants that repel these parasitic insects and also attract beneficial ones to the garden bed.

Interplanting vegetables with strawberries can also conceal succulent berries from birds and other garden pests. Many plants can also produce profound scents that can mask the fragrance of strawberries, which also protects them. Vegetables and herbs are excellent at attracting beneficial insects that will prey on destructive insects.

Strawberries can also help other plants through companion planting. The low-lying spread of strawberry plants makes them an optimal as a ground cover to control weeds around plants like rhubarb, asparagus, and horseradish.



Organic Gardening:

Strawberry Companion Plants

Here is a robust list of plants that will offer some pest protection for your strawberry plants and help you grow a hardy bumper crop of strawberries. Plant these garden friends alongside strawberry plants and enjoy the extraordinary benefits of companion planting.



Asparagus

Asparagus and strawberries are natural interplanting partners in the garden bed. They spread their roots on alternate planes of the soil, and they both emerge from the ground soon after the last frost. These two garden mates use the soil effectively without competing with one another and contributes to nutrient return.

Bush Beans

Bush beans work well to repel garden beetles and other pests that feed on strawberry plants. Beans also release beneficial nitrogen back into the soil as they grow, which feeds nearby strawberries and boosts their fruit production.

Strawberry Companion Plants

Borage

Borage is an herb that works double duty for strawberries in the garden bed. Not only does borage repel damaging insects, but it also attracts beneficial insects and pollinators to the strawberry patch.

Caraway

Caraway attracts insects that feed on pests that can cause significant damage to strawberries. Such insects included parasitic flies and wasps that will protect strawberries from fruit seeking pests like aphids and mites.



Catnip

Catnip deters damaging insects such as aphids and mites from destroying the leaves of strawberry plants. Strawberry plants are particularly prone to attracting both of these garden pests.

Chives

Chives are an herb that does double the work of most companion plants. Not only can growing chives close to your strawberries improve their flavor, but they also shield your plump red berries from unwanted destructive pests.

Strawberry Companion Plants

Yarrow

Yarrow attracts beneficial pollinators to your garden, which can boost the yield of your strawberries.

Onions

These pungent vegetables make great strawberry companion plants. Their unappealing odor is a natural deterrent of many garden pests that feed on the leaves and fruits of the strawberry plant.

Sage

Sage is another one of those herbs that emit a strong odor and has also been successful in masking the sweet scent of your strawberries in the garden, making it more difficult for destructive pests to find your berry plant.

Spinach

Not only do spinach and strawberries make an excellent combination in the salad bowl, but they are also super compatible in the garden. Spinach contains saponins, which act as a natural repellent of destructive garden pests.

Thyme

Thyme is a scented herb that repels certain varieties of parasitic worms that seek to destroy strawberry plants.

Plants to Avoid in the Strawberry Patch

Unfortunately, some plants are not meant to be interplanted and can cause the demise of your strawberries if they are used as companions. In this case, strawberry plants are prone to a disease called verticillium.

Plants like **tomatoes, eggplant, potatoes, melons, peppers, roses, mint,** and **okra** may actually contribute to this deadly disease in strawberry plants.

It is essential to note that strawberries should not even be planted in beds that have recently housed those plants on this list.

Strawberries are also not the best companions for plants that are in the **cabbage family**. Not only are they not good neighbors, but they are destructive neighbors, as they hamper the growth of cabbage family members.

Common cabbage groupings include collard greens, kale cauliflower, kohlrabi, bok choy, and brussel sprouts.



Organic Gardening:

Edible Flower Power Companions



Nasturtium

[Read More](#)

Nasturtiums aside from being tasty, vitamin-rich, and beautiful, are plants that are often used as trap crops, attracting aphids or squash, drawing these pests away from vegetable plants.



Calendula

[Read More](#)

Calendula is an herbaceous plant with healing properties that attracts beneficial pollinators to the garden, repels garden pests, and is even an edible plant.



Marigold

[Read More](#)

Marigolds are an edible plant, and they also have a unique scent that makes them a sought-after companion plant, deterring pests while accenting the garden landscape.



Borage

[Read More](#)

Borage is an all-around best friend in any garden. It attracts beneficial pollinators which are essential for plant reproduction. Borage also attracts beneficial insects for natural pest control of common garden pests.

COMPANION PLANTING GUIDE

PLANTS THAT GROW WELL TOGETHER

LETTUCE

Broccoli, Carrots, Cauliflower, Cucumber, Dill, Garlic, Onion, Spinach, Squash, Strawberry, Tomatoes, Sage, Thyme



SPINACH

Broccoli, Cauliflower, Cilantro, Leeks, Lettuce, Peas, Strawberry, Sage, Thyme



SWISS CHARD

Beans, Broccoli, Cauliflower, Onion, Peppers, Sage, Thyme



PEPPERS

Basil, Carrots, Cucumber, Oregano, Parsley, Peas, Rosemary, Squash, Swiss Chard, Tomatoes, Sage, Thyme

Avoid: Beans, Broccoli, Cauliflower



BEANS

Broccoli, Carrots, Cauliflower, Corn, Cucumber, Peas, Rosemary, Sage, Strawberry, Swiss Chard, Thyme, Tomatoes

Avoid: Chives, Garlic, Leeks, Marigold, Onion, Peppers



PEAS

Beans, Carrots, Corn, Cucumber, Parsley, Peppers, Sage, Spinach, Squash, Strawberry, Thyme

Avoid: Chives, Garlic, Leeks, Onion



COMPANION PLANTING GUIDE

PLANTS THAT GROW WELL TOGETHER

BROCCOLI

Beans, Carrots, Chives, Cucumber, Dill, Garlic, Lettuce, Nasturtium, Onion, Oregano, Rosemary, Sage, Spinach, Swiss Chard, Thyme

Avoid: Peppers, Squash, Strawberry, Tomatoes



CAULIFLOWER

Beans, Carrots, Chives, Cucumber, Dill, Garlic, Lettuce, Nasturtium, Onion, Oregano, Rosemary, Sage, Spinach, Swiss Chard, Thyme

Avoid: Peppers, Squash, Strawberry, Tomatoes



CUCUMBER

Beans, Broccoli, Cauliflower, Corn, Dill, Lettuce, Nasturtium, Onions, Peas, Peppers, Tomatoes, Thyme

Avoid: Sage



CORN

Beans, Cucumber, Dill, Melon, Parsley, Peas, Sage, Squash, Sunflower, Thyme

Avoid: Tomatoes



SQUASH

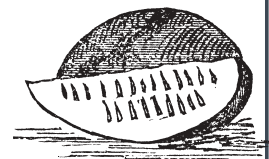
Corn, Lettuce, Marigold, Melon, Nasturtium, Peas, Peppers, Sage, Thyme

Avoid: Broccoli, Cauliflower



MELON

Corn, Marigold, Nasturtium, Sage, Squash, Sunflower, Thyme



WEEKLY TO-DOS

FRIDAY

SATURDAY

MONDAY / TUESDAY

SUNDAY

WEDNESDAY / THURSDAY

Organic Gardening:

Gardening Guides & Charts:



Additional Guides:

Guides for Children:



Kellogg Garden Organics

Kellogg Garden Products, family-owned and operated since its establishment in 1925 by our founder, H. Clay Kellogg, now spans four generations. The company continues its success as a steadfast business, guided by Mr. Kellogg's original core values: innovation, loyalty, experience, commitment, and generosity.

These values have led our company to seek the highest level of organic rigor in all its branded products.

In 2012, Kellogg Garden Products committed to strictly follow the USDA's National Organic Program (NOP) guidelines for manufacturing all Kellogg Garden Organics and G&B Organics branded soils and fertilizers.

Every ingredient and every process used to produce our branded products has been verified 100% compliant as organic, all the way back to the source, meeting all federal guidelines.



All our branded products are approved by the California Department of Food and Agriculture's stringent Organic Input Materials (OIM) program, as well as the Organic Materials Review Institute (OMRI) – the leading independent review agency accredited by the USDA NOP.

Kellogg is still the first and only manufacturer to have all our branded organic soils and fertilizers OIM approved and OMRI Listed, making Kellogg the first to offer Proven Organic soils and fertilizers that build life in the soil. Since 1925, we continue to strive to be the leading organic source helping people grow beautiful and healthy gardens - organically.



Organic Gardening:

Product Recommendations



ORGANIC SOIL



ORGANIC LIQUID FERTILIZER



ORGANIC GRANULAR FERTILIZER

**G&B Organics Only Available in the Western United States

