

LOWRANCE

ON THE WATER TRAINING



Lowrance On The Water Training on Your Boat

- go through all Lowrance settings and menus
- show screen selection and overlays so they display what you want them to show
- explain basic installation information and verify installation is correct on your boat
- waypoint and trail management
- cover all power requirements and verify
- complete demo of all features that are installed on the boat

*Three hours (1-2) people: \$235.00 | \$75.00 deposit required
14 day cancellation notice required for refund | Price based on travel within 45 mile radius of Algonquin, IL*

Lowrance On The Water Training on My Ranger 620FS

- go through all Lowrance settings and menus
- show screen selection and how to setup overlays so they display what you want them to show
- explain basic installation information
- waypoint and trail management
- cover all power requirements
- complete demo of all features of different Lowrance units

*Three hours (1-2) people: \$280.00 | \$75.00 deposit required,
14 day cancellation notice required for refund | Price based on travel within 45 mile radius of Algonquin, IL*

System Check – System Reconfigure on Your Boat

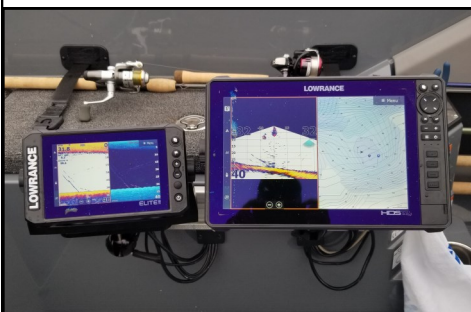
- check complete system and reconfigure for upgraded installations, added units, updated software, transferred units from previous boat or similar

*First hour: \$135.00 - \$50.00 for each additional hour | \$50.00 deposit required,
7 day cancellation notice required for refund | Price based on travel within 45 mile radius of Algonquin, IL*

Virtual Lowrance On The Water Training

- go through all Lowrance settings and menus
- show screen selection and overlays so they display what you want them to show
- explain basic installation information and do my best to verify installation is correct on your boat
- waypoint and trail management
- complete demo of all features that are installed on the boat

First hour: \$75.00 - \$50.00 for each additional hour | \$50.00 deposit required – Internet Connection and PC/Laptop required,



Contact: Mark O'Neill

<http://www.structure-fishing.com/>

mark@structure-fishing.com

Cell 773-330-9702