

GENERAL NOTES

1. APPLICABLE CODES:

1.1. FLORIDA FIRE PREVENTION CODE – (2023)

1.2. FLORIDA ACESSIBILITY CODE – 8th. EDITION (2023)

1.3. FLORIDA MECHANICAL CODE: – 8th. EDITION (2023)

1.4. FLORIDA FUEL GAS CODE: – 8th. EDITION (2023)

1.6. FLORIDA ENERGY CONSERVATION CODE: – 8th. EDITION (2023)

1.7. FLORIDA BUILDING CODE – 8th. EDITION (2023)

1.8. FLORIDA FIRE PREVENTION CODE – (2023)

1.9. FLORIDA FIRE PREVENTION CODE – 8th EDITION

1.10. LIFE SAFETY CODE: N.F.P.A. 101. (2021 EDITION) WITH FLORDA AMEMDMENTS

1.11. FIRE ALARM AND SIGNALING CODE: N.F.P.A. 72. (2016 EDITION)

1.12. NFPA 1 UNIFORM CODE (2021) WITH FLORIDA AMENDMENTS

1.13. NATIONAL ELECTRICAL CODE 2020 & FBC 2023 ENERGY CODE 8TH EDITION
2. FIRE SPRINKLER SYSTEM: BUILDING 100% FULLY SPRINKLERED.
3. PROJECT TYPE: NEW TENANT.
4. NEW TENANT CONSTRUCTION SIZE: 36,000 SQFT, SINGLE STORY.
5. CONSTRUCTION TIPE: VB
6. OCCUPANCY CLASSIFICATION: M, F–1, S–1, A–2, B
7. OCCUPANT LOAD: 322
8. FIRE ALARM SYSTEM CLASSIFICATION IS: CENTRAL STATION SERVICE.
9. FIRE ALARM SYSTEM TYPE IS: ADDRESSABLE.
10. ALL FIRE ALARM CIRCUITS TO BE CLASS B, POWER LIMITED.
11. VERIFY IN FIELD ALL DIMENSIONS. DO NOT SCALE THE DRAWINGS
12. ALL WORK SHALL BE OF HIGHEST QUALITY AND WORKMANSHIP.
13. THIS IS A NEW FIRE ALARM SYSTEM, ALL DEVICES SHALL BE NEW AND LISTED FOR IT’S INTENDED APPLICATION.
14. ALL DEVICES INSTALLED SHALL BE AS SPECIFIED IN THE DEVICE SCHEDULE, ANY INTENDED SUBSTITUTIONS SHALL FIRST BE SUBMITTED FOR REVISION AND APPROVAL.
15. INSTALLING CONTRACTOR SHALL VERIFY IN FIELD AND COORDINATE ANY INTERFERENCE WITH OTHER TRADES.
16. ALL ELECTRICAL CIRCUITS POWERING ANY AND ALL FIRE ALARM EQUIPMENT SHALL BE DEDICATED, SHALL HAVE A MEANS OF DISCONNECT EQUIPPED WITH A MECHANICAL LOCK-ON DEVICE, AND BE IDENTIFIED AS "FIRE ALARM CIRCUIT".
17. ALL CONTROL RELAYS SHALL BE LOCATED WITHIN 3’ OF THE CONTROLLED DEVICE OR APPLIANCE.
18. ALL CONDUIT USED FOR FIRE ALARM SHALL BE DEDICATED FOR FIRE ALARM ONLY.
19. ALL CONDUIT AND CABLING INSTALLATION SHALL COMPLY WITH THE CURRENT NATIONAL ELECTRIC CODE N.F.P.A. 70.
20. ALL WALL, FLOOR AND CEILING PENETRATION SEALINGS SHALL BE RATED FOR THE SAME HOUR RATING AS THE WALL, FLOOR OR CEILING BEING PENETRATED.
21. ANY TWO OR MORE VISUAL NOTIFICATION APPLIANCES VISIBLE FROM THE SAME FIELD OF VIEW SHALL FLASH IN SYNCHRONIZATION.
22. FIRE ALARM SYSTEM WILL COMMUNICATE WITH CENTRAL STATION BY MEANS OF A CELLULAR COMMUNICATOR FOR THE PURPOSE OF FIRE DEPARTMENT NOTIFICATION.
23. ALL DEVICES INSTALLED IN WET LOCATIONS SHALL BE SUITABLE FOR SUCH AREA.
24. DUCT DETECTORS PROVIDED AND INSTALLED BY OTHERS.
25. ALL VISUAL NOTIFICATION DEVICES SHALL BE INSTALLED @ 30 A.F.F. MAXIMUM. IF CEILING HEIGHT IS HIGHER, CONTRACTOR SHALL INSTALL ELECTRICAL BOXES AND EMT PIPE TO LOWER NOTIFICATION DEVICE.
26. BACKFLOW TAMPER SUPERVISION NOT REQUIRED, THIS IS AN EXISTING BUILDING,EXISTING BACKFLOW PREVENTER IS CURRENTLY CHAINED AND LOCKED.

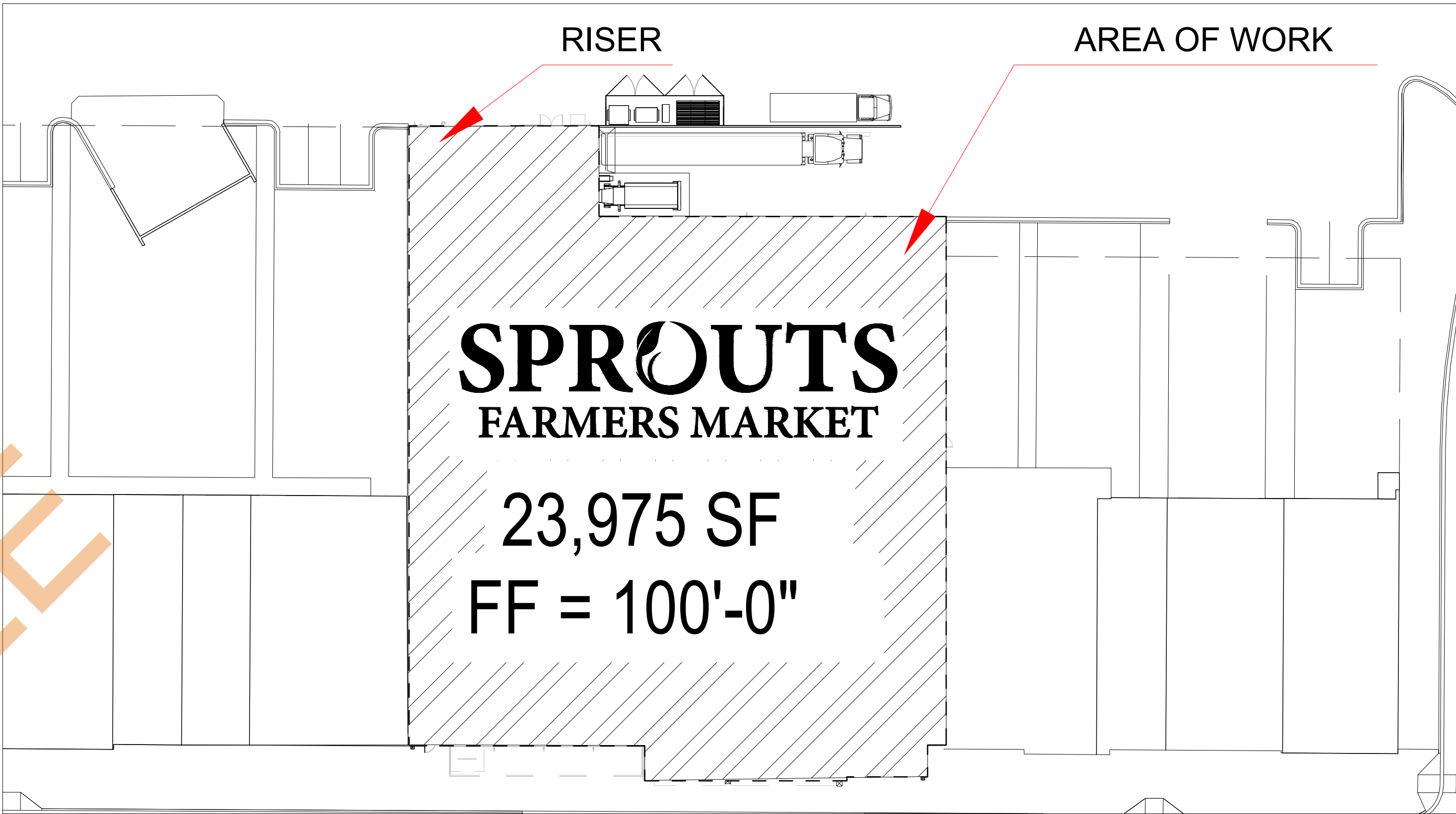
SECURITAS ES.
PHONE# 1–855–331–0359
CONTACT STEVE ORBACH
SR. ACCOUNT EXECUTIVE – NATIONAL RETAIL
M: 805–444–5700

02 MONITORING COMPANY INFORMATION
NOT TO SCALE

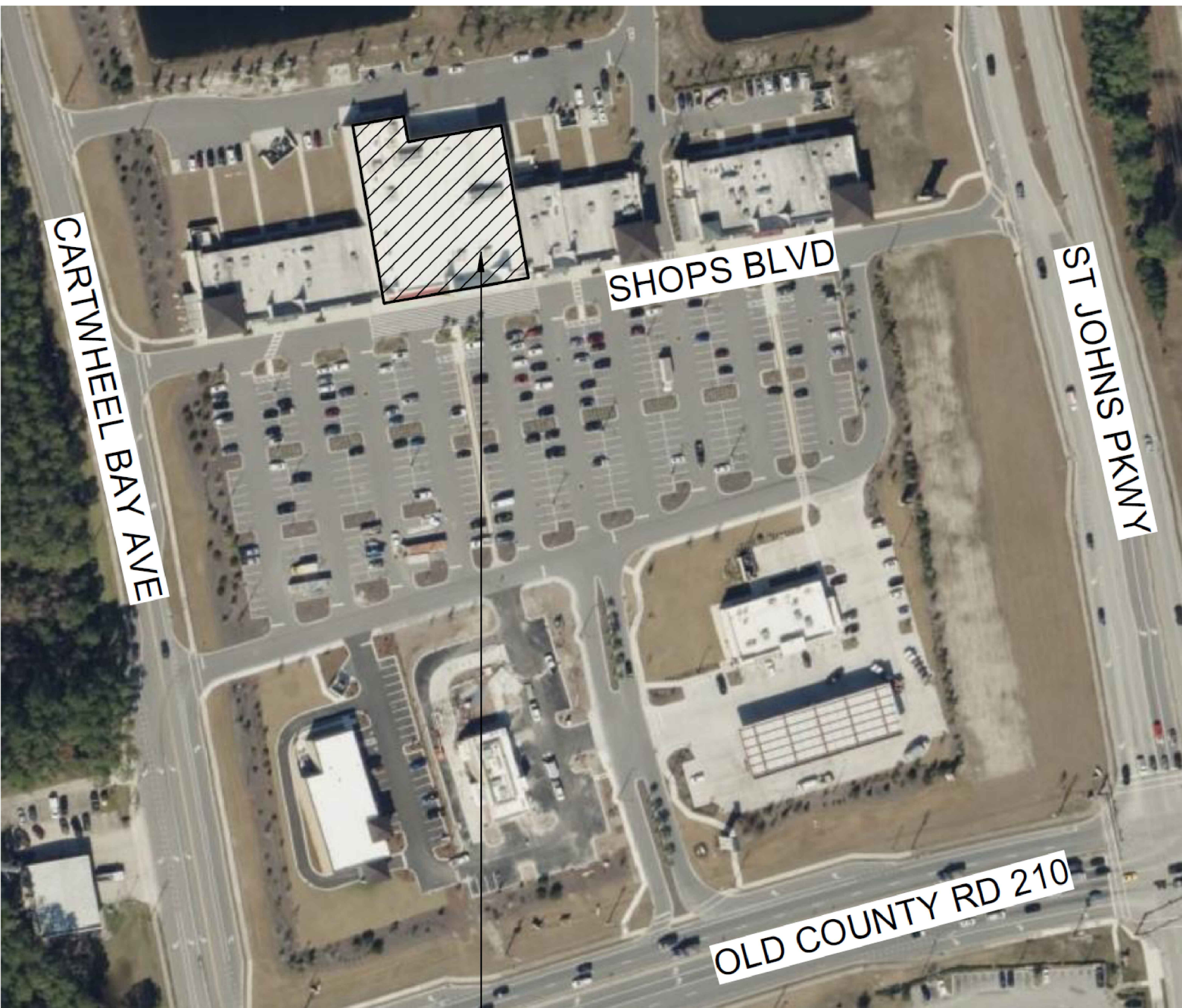
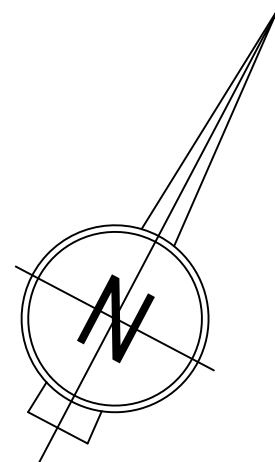
SCOPE OF WORK:

- INSTALL ALL ELECTRICAL BOXES, CONDUITS, SLEEVES AND, STUB UPS.
- INSTALL ALL CABLING.
- SET ALL ADDRESSES AND INSTALL ALL NEW INITIATING DEVICES SHOWN ON THE RISER AND FLOOR PLANS.
- SET ALL CANDELA/WATTAGE RATINGS AND INSTALL ALL NEW NOTIFICATION DEVICES SHOWN ON THE RISER AND FLOOR PLANS.
- PROGRAM AND TEST ALL PARTS OF THE FIRE ALARM SYSTEM TO FUNCTION AS SPECIFIED IN THE SEQUENCE OF OPERATION.
- DEMONSTRATE ALL PARTS OF THE FIRE ALARM SYSTEM WORK AS INTENDED DURING INSPECTIONS WITH AUTHORITY HAVING JURISDICTION.
- NEW MANUAL FIRE ALARM SYSTEM. NEW FIRE ALARM PANEL IS BEING INSTALLED ALONG WITH NOTIFICATION DEVICES AS PER THE APPLICABLE CODES. SPRINKLER WATERFLOW SWITCH IS BEING MONITORED TO ACTIVATE NOTIFICATION DEVICES UPON ALARM.

03 SCOPE OF WORK
NOT TO SCALE

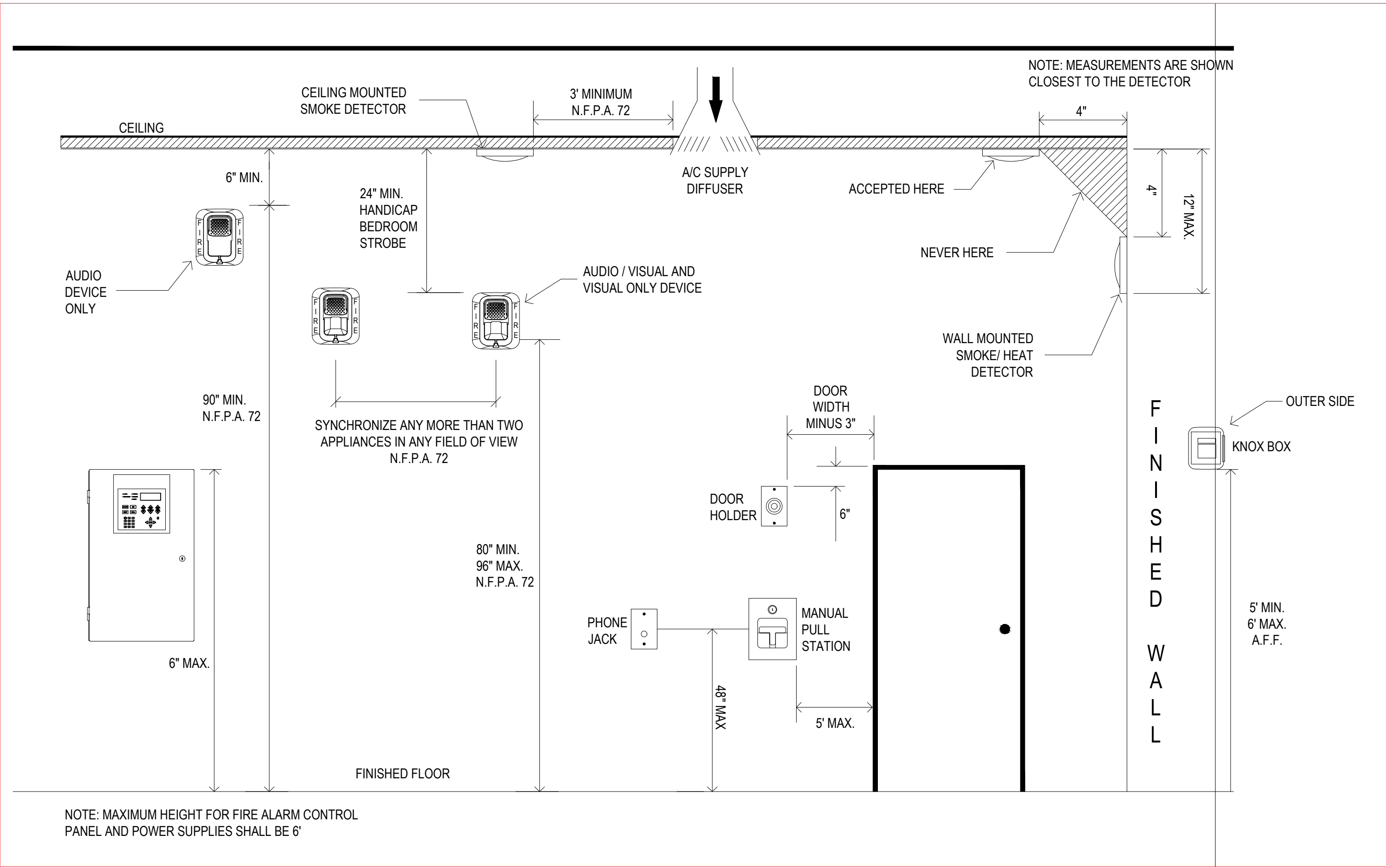
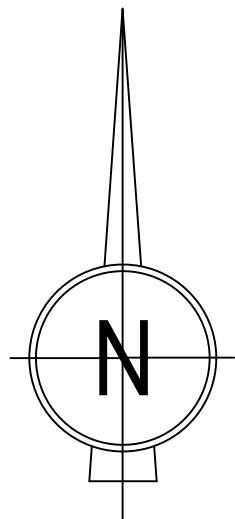


04 SITE PLAN
N.T.S.



PROJECT LOCATION

02 SITE MAP
N.T.S.



05 DEVICE MOUNTING HEIGHTS
N.T.S.

PROJECT:
SPROUTS FARMERS -
ST JOHNS

SPROUTS
FARMERS MARKET

121 Shops Blvd, St Johns, FL 32259

PROJECT ADDRESS:

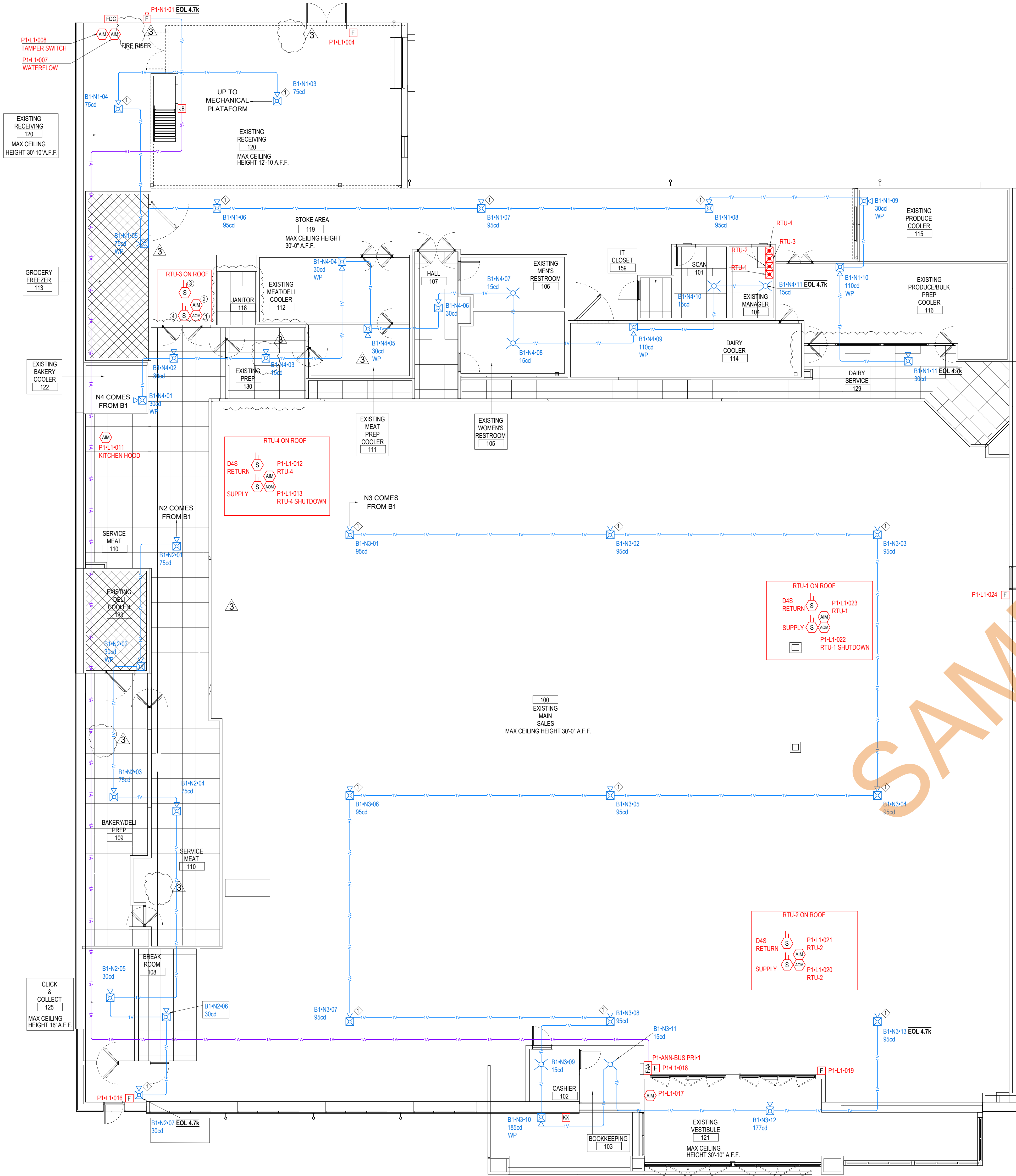
REV. NO.	DATE	DESCRIPTION	DRAWN BY:	REVIEWED BY:
01	09/20/2024	INITIAL REVISION	JEM	MO
02	10/09/2024	EDR COMMENTS	JEM	MO
03	11/20/2024	PRE DEF COMMENTS	CS	MO
04				
05				

CONTRACTOR:

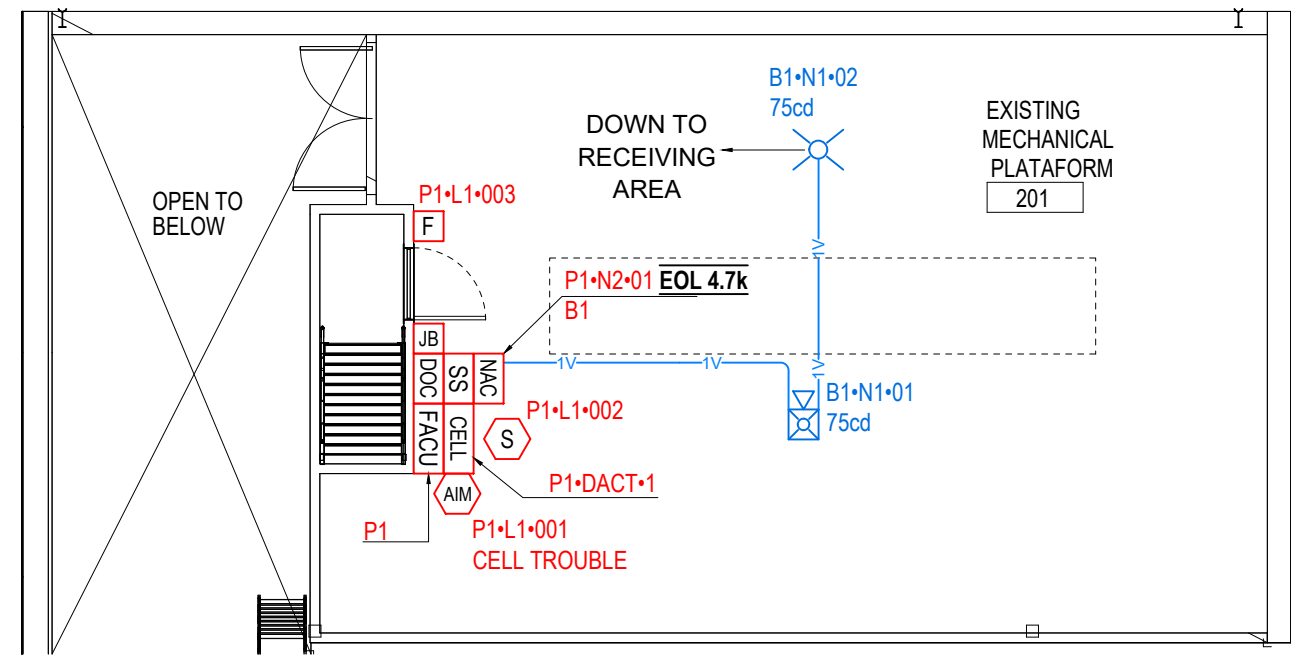
LEBS Electric
1144 S CONGRESS AVENUE PALM SPRINGS, FL 33406
754-269-1251 Fax: 754-462-0472

PROJECT No:
DATE: 11/20/2024
DWG FILE: FA-SPROUTS_FARMERS_ST_JOHNS
SCALE: SEE DRAWINGS
Sheet:

FA-01



01 FIRE ALARM FLOOR PLAN
1/8" = 1'



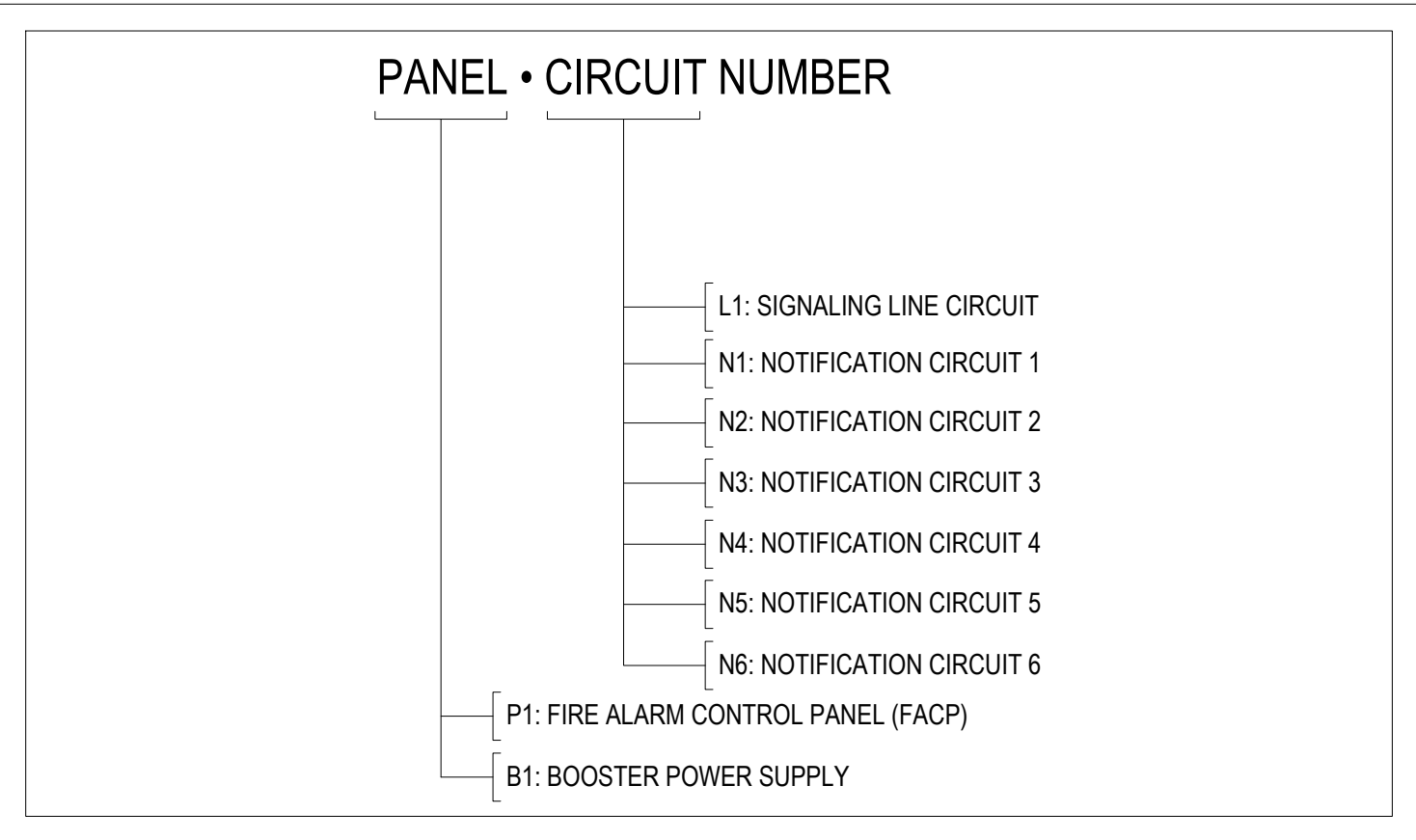
02 FIRE ALARM MECH PLATFORM PLAN
1/8" = 1'

EQUIPMENT LIST				
SYMBOL	QUANTITY	MANUFACTURER	PART NO	DESCRIPTION
[FACP]	1	FIRELITE	ES-50X	FIRE ALARM CONTROL PANEL
[DOC]	1	SPACE AGE ELECTRONICS	SSU00991	DOCUMENT BOX
[CELL]	1	TELGUARD	TG-TFS	COMMUNICATOR
[NAC]	1	FIRELITE	FL-PS6	BOOSTER POWER SUPPLY
[FAA]	1	FIRELITE	ANN-80	ANNUNCIATOR
[F]	6	FIRELITE	BG-12LX	ADDRESSABLE MANUAL PULL STATION
[AM]	9	FIRELITE	MMF-300	ADDRESSABLE MONITOR MODULE
[VCM]	4	FIRELITE	CRF-300	ADDRESSABLE RELAY MODULE
[DAS]	4	SYSTEM SENSOR	DAS	PHOTOELECTRIC SENSOR COMPONENT (BY OTHERS)
[D]	4	SYSTEM SENSOR	D4120	DUCT SMOKE DETECTOR (BY OTHERS)
[RTS]	4	SYSTEM SENSOR	RTS2	REMOTE TEST STATION (BY OTHERS)
[S]	1	FIRELITE	SD365 WE300-6	ADDRESSABLE PHOTOELECTRIC SMOKE DETECTOR W/ STANDARD BASE
[F]	1	SYSTEM SENSOR	SSM24-10	ALARM BELL 10" 24VDC, RED
[WP]	9	SYSTEM SENSOR	P2GRKLED	HORN/STROBE, WALL, RED, OUTDOOR
[C]	26	SYSTEM SENSOR	PC2RLED	HORN/STROBE, CEILING, RED
[X]	7	SYSTEM SENSOR	SCRLED	STROBE, CEILING, RED
[SS]	1	DTEK	DTK-120HW	POWER SURGE PROTECTIVE 120VAC
[KX]	1	-	-	KNOX BOX (BY OTHERS)
[FDC]	1	-	-	FIRE DEPARTMENT CONNECTION (BY OTHERS)

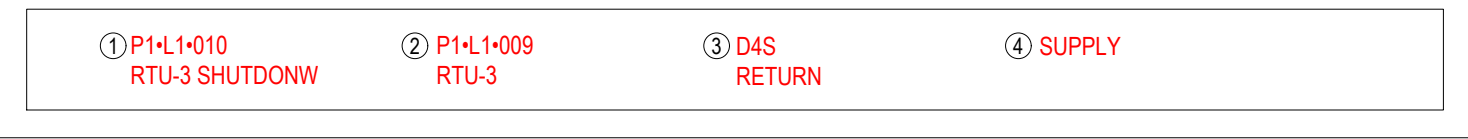
03 EQUIPMENT LIST
1/16" = 1"

CABLE AND WIRE LEGEND	
LABEL	DESCRIPTION
A	ANNUNCIATOR - 4 COND. SOLID COPPER FPLP ANALOG UNSHIELDED
B	RTS - 6 COND. SOLID COPPER FPLP ANALOG UNSHIELDED
D	SLC - 2 COND. SOLID COPPER FPLP ADDRESSABLE UNSHIELDED
E	PHONE LINE - RJ31X SOLID COPPER TWISTED SHIELDED
V	NAC - 2 COND. SOLID COPPER FPLP ANALOG UNSHIELDED
Z	IDC - 2 COND. SOLID COPPER FPLP ANALOG UNSHIELDED

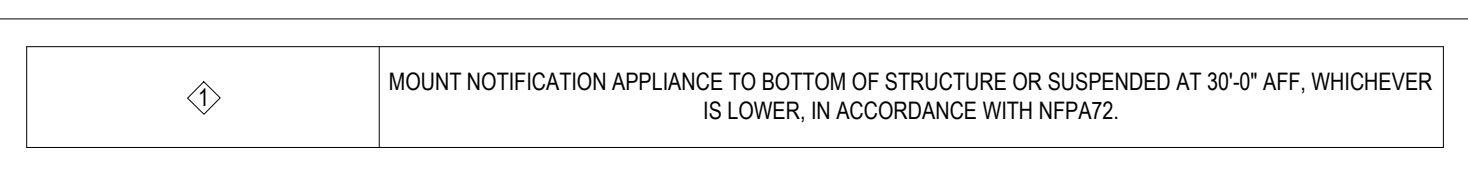
04 CABLE LEGEND
1/16" = 1"



05 LABEL LEGEND
1/16" = 1"



06 ADDRESS & LABEL REFERENCE
1/16" = 1"



07 KEY NOTES
1/16" = 1"

PROJECT:
SPROUTS FARMERS -
ST JOHNS

SPROUTS
FARMERS MARKET

122 Shops Blvd., St. Johns, FL 32259

PROJECT ADDRESS:

REVISION SCHEDULE

REV. NO.	DATE	DESCRIPTION
01	09/02/2024	INITIAL REVISION
02	10/09/2024	EDR COMMENTS
03	11/02/2024	FIRE DEPT. COMMENTS
04		
05		

CONTRACTOR:

LEBS Electric
1144 S CONGRESS AVENUE PALM SPRINGS, FL 33406
754-269-2531 Fax: 754-462-0472

PROJECT No:	
DATE:	11/20/2024
DWG FILE:	FA-SPROUTS_FARMERS_ST_JOHNS
SCALE:	SEE DRAWINGS
Sheet:	

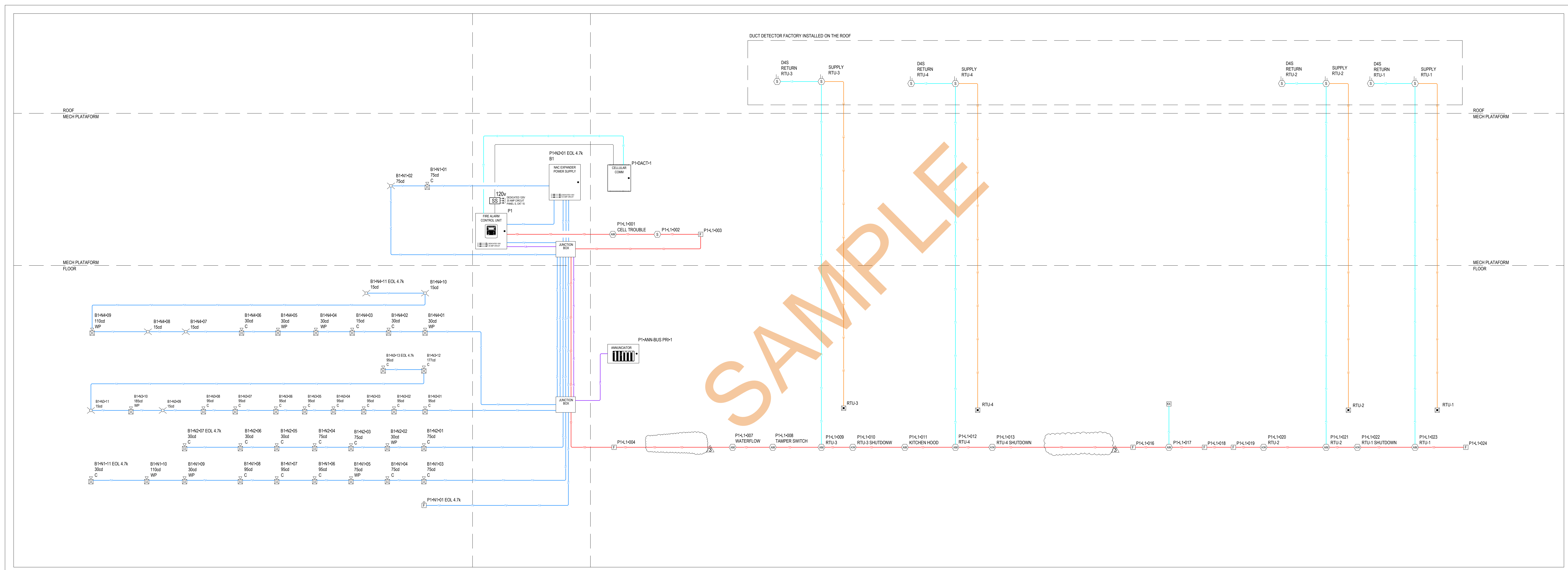
FA-02

REV. No.	DATE:	DESCRIPTION:	DRAWN BY:	REVIEWED BY:
01	08/30/2024	INITIAL REVISION	JEM	MD
02	10/09/2024	EOR COMMENTS	JEM	MD
03	11/20/2024	FIRE DEP. COMMENTS	CG	MD
04				
05				

LEBS Electric
1144 S CONGRESS AVENUE PALM SPRINGS, FL 33406
954-228-7539 | Fax 954-482-0472

Sheet: _____

FA-03



PANEL P1 (ES-50X) BATTERY CALCULATION (SECONDARY POWER SOURCE REQUIREMENTS)											
					QTY	PART NO.	DESCRIPTION	STANDBY CURRENT		SECONDARY ALARM CURRENT	
								CURRENT DRAW (A)	TOTAL (A)	CURRENT DRAW (A)	TOTAL (A)
PANEL COMPONENTS					1	ES-50X	INTELLIGENT ADDRESSABLE FACP WITH COMMUNICATOR	0.00000	0.00000	0.00000	0.00000
					1	ES-50X MAIN BOARD	MAIN BOARD FOR ES-50X FIRE ALARM CONTROL PANEL	0.14100	0.14100	0.25700	0.25700
					1	IPOTS-COM	DUAL TECHNOLOGY (POTS AND IP) COMMUNICATOR/REPLACEMENT BOARD) FOR THE ENDURANCE SERIES PANELS	0.04000	0.04000	0.04100	0.04100
CIRCUIT	MAX CARD AMPS	USED CARD AMPS	SPARE CARD AMPS	SYMBOL	QTY	PART NO	DESCRIPTION	CURRENT DRAW (A)	TOTAL (A)	CURRENT DRAW (A)	TOTAL (A)
P1+ANN-BUS PRI				[FA]	1	ANN-80	RED 80 CHARACTER LCD ANNUNCIATOR	0.00000	0.00000	0.00000	0.00000
				[F]	6	BG-12LX	ADDRESSABLE MANUAL PULL STATION WITH INTERFACE MODULE MOUNTED INSIDE	0.00038	0.00225	0.00500	0.03000
				[NAC]	4	CRF-300	ADDRESSABLE RELAY MODULE CONTAINING TWO ISOLATED SETS OF FORM-C CONTACTS, WHICH OPERATE AS A DPDT SWITCH. MOUNTS DIRECTLY TO A 4.0" (10.16 CM) BOX. SURFACE MOUNT USING THE SM8500.	0.00026	0.00102	0.00650	0.02600
				[AM]	9	MMF-300	ADDRESSABLE MONITOR MODULE W/ FLASHSCAN, SUPERVISES CLASS A OR CLASS B OF DRY CONTACT INPUT	0.00038	0.00338	0.00500	0.04500
				[S]	1	SD365 WB300-6	WHITE, ADDRESSABLE PHOTOELECTRIC DETECTOR, STANDARD BASE	0.00020	0.00020	0.00450	0.00450
P1+N1	3	0.173000	2.827000	[F]	1	SSM24-10	ALARM BELL 10" 24VDC, RED	0.00000	0.00000	0.05350	0.05350
P1+N2				[NAC]	1	FL-PS6	6.0 A, 120 VAC REMOTE CHARGER POWER SUPPLY IN A LOCKABLE METAL ENCLOSURE	0.01400	0.01400	0.01400	0.01400
P1+DACT	N/A	0.000000		[CELL]	1	TG-7FS	COMMERCIAL FIRE CELLULAR ALARM COMMUNICATOR FOR LTE NETWORKS, TELCO	0.00000	0.00000	0.00000	0.00000
								TOTAL STANDBY (A)	0.202	TOTAL ALARM (A)	0.471
								REQUIRED STANDBY TIME (HOURS)		24	
								REQUIRED ALARM TIME (MINUTES)		5	
SECONDARY STANDBY LOAD (A)								0.202	24.000	4.844	
SECONDARY ALARM LOAD (A)								0.471	0.083	0.039	
STANDBY AND ALARM SUBTOTAL (AMP HOURS)										4.884	
DERATING FACTOR										1.250	
SECONDARY LOAD REQUIREMENTS (AMP HOURS)										6.104	
PROVIDE (2) 12V 7AH BATTERIES											
*BATTERY BOX SIZE CAPACITY NOT SPECIFIED. REFER TO MANUFACTURER DOCUMENTATION.											
PANEL P1+N2+01 EOL-47K											
B1 (FL-PS6) BATTERY CALCULATION (SECONDARY POWER SOURCE REQUIREMENTS)											
					QTY	PART NO.	DESCRIPTION	STANDBY CURRENT		SECONDARY ALARM CURRENT	
								CURRENT DRAW (A)	TOTAL (A)	CURRENT DRAW (A)	TOTAL (A)
PANEL COMPONENTS					1	FL-PS6	6.0 A, 120 VAC REMOTE CHARGER POWER SUPPLY IN A LOCKABLE METAL ENCLOSURE	0.00000	0.00000	0.00000	0.00000
					1	FL-PS6 MAIN BOARD	FIRE ALARM POWER SUPPLY MAIN BOARD	0.13900	0.13900	0.15700	0.15700
CIRCUIT	MAX CARD AMPS	USED CARD AMPS	SPARE CARD AMPS	SYMBOL	QTY	PART NO	DESCRIPTION	CURRENT DRAW (A)	TOTAL (A)	CURRENT DRAW (A)	TOTAL (A)
B1+N1				[WP]	1	P2GRKLED	LED COMPACT HORN/STROBE, WALL, RED 30CD	0.00000	0.00000	0.03800	0.03800
				[WP]	1	P2GRKLED	LED COMPACT HORN/STROBE, WALL, RED 75CD	0.00000	0.00000	0.08700	0.08700
				[WP]	1	P2GRKLED	LED COMPACT HORN/STROBE, WALL, RED 110CD	0.00000	0.00000	0.09400	0.09400
				[WP]	1	PC2RLED	LED HORN/STROBE, CEILING, RED 30CD	0.00000	0.00000	0.03800	0.03800
				[WP]	3	PC2RLED	LED HORN/STROBE, CEILING, RED 75CD	0.00000	0.00000	0.08700	0.26100
				[WP]	3	PC2RLED	LED HORN/STROBE, CEILING, RED 95CD	0.00000	0.00000	0.09200	0.27600
				[WP]	1	SCRLED	LED STROBE, CEILING, RED 75CD	0.00000	0.00000	0.07000	0.07000
B1+N2	6	2.912000	3.088000	[WP]	1	P2GRKLED	LED COMPACT HORN/STROBE, WALL, RED 30CD	0.00000	0.00000	0.03800	0.03800
				[WP]	3	PC2RLED	LED HORN/STROBE, CEILING, RED 30CD	0.00000	0.00000	0.03800	0.11400
				[WP]	3	PC2RLED	LED HORN/STROBE, CEILING, RED 75CD	0.00000	0.00000	0.08700	0.26100
B1+N3				[WP]	1	P2GRKLED	LED COMPACT HORN/STROBE, WALL, RED 185CD	0.00000	0.00000	0.19000	0.19000
				[WP]	9	PC2RLED	LED HORN/STROBE, CEILING, RED 95CD	0.00000	0.00000	0.09200	0.82800
				[WP]	1	PC2RLED	LED HORN/STROBE, CEILING, RED 177CD	0.00000	0.00000	0.19000	0.19000
B1+N4				[WP]	2	SCRLED	LED STROBE, CEILING, RED 15CD	0.00000	0.00000	0.01800	0.03600
				[WP]	3	P2GRKLED	LED COMPACT HORN/STROBE, WALL, RED 30CD	0.00000	0.00000	0.03800	0.11400
				[WP]	1	P2GRKLED	LED COMPACT HORN/STROBE, WALL, RED 110CD	0.00000	0.00000	0.09400	0.09400
				[WP]	1	PC2RLED	LED HORN/STROBE, CEILING, RED 15CD	0.00000	0.00000	0.03500	0.03500
				[WP]	2	PC2RLED	LED HORN/STROBE, CEILING, RED 30CD	0.00000	0.00000	0.03800	0.07600
				[WP]	4	SCRLED	LED STROBE, CEILING, RED 15CD	0.00000	0.00000	0.01800	0.07200
								TOTAL STANDBY (A)	0.139	TOTAL ALARM (A)	3.069
								REQUIRED STANDBY TIME (HOURS)		24	
								REQUIRED ALARM TIME (MINUTES)		5	
SECONDARY STANDBY LOAD (A)								0.139	24.000	3.336	
SECONDARY ALARM LOAD (A)								3.069	0.083	0.256	
STANDBY AND ALARM SUBTOTAL (AMP HOURS)										3.592	
DERATING FACTOR										1.250	
SECONDARY LOAD REQUIREMENTS (AMP HOURS)										4.490	
PROVIDE (2) 12V 7AH BATTERIES											
*BATTERY BOX SIZE CAPACITY NOT SPECIFIED. REFER TO MANUFACTURER DOCUMENTATION.											

LUMP SUM REPORT SUMMARY																			
DISTANCE MEASURED USING DRAWN SEGMENT LENGTHS WITH 15.00% ADDITIONAL LENGTH CALCULATED																			
SOURCE	CIRCUIT	PART NO	MAX. CARD CURRENT (A)	TOTAL CARD CURRENT (A)	SPARE CARD CURRENT (A)	SPARE CARD CURRENT %	MAX. CIRCUIT CURRENT (A)	TOTAL CIRCUIT CURRENT (A)	SPARE CIRCUIT CURRENT (A)	SPARE CIRCUIT CURRENT %	WIRE GAUGE	WIRE RESISTANCE (D/KFT)	TOTAL CIRCUIT LENGTH (FT)	TOTAL CIRCUIT RESISTANCE (D)	STARTING CALCULATION VOLTAGE	MIN. OPERATIONAL VOLTAGE	MAX. VOLTAGE DROP	END OF LINE VOLTAGE	VOLTAGE DROP %
B1 (FL-PS6)	N1	FL-PS6 MAIN BOARD	6	2.912	3.088	51.47 %	3	0.864	2.136	71.20 %	14	2.600	324	1.6853	20.400	16	1.4563	18.9437	7.14 %
	N2						3	0.413	2.587	86.23 %	14	2.600	236	1.29167	20.400	16	0.50765	19.89235	2.49 %
	N3						3	1.244	1.756	58.53 %	14	2.600	558	2.02099	20.400	16	3.61179	16.78821	17.70 %
	N4	ES-50X MAIN BOARD					3	0.391	2.809	86.97 %	14	2.600	239	1.24299	20.400	16	0.48801	19.91199	2.38 %
P1 (ES-50X)	N1						2.500	0.6533	2.4465	97.86 %	14	2.600	39	0.20291	20.400	16	0.01086	20.38914	0.05 %
	N2	ES-50X MAIN BOARD	3	0.1945	2.8055	93.52 %	2.500	0.014	2.486	99.44 %	14	2.600	6	0.03232	20.400	16	0.00045	20.39955	0.00 %
CALCULATION METHODS:																			
TOTAL RESISTANCE (D) = WIRE RESISTANCE (D/KFT) X 2 X TOTAL CIRCUIT LENGTH (FT)																			
TOTAL VOLTAGE DROP = TOTAL RESISTANCE (D) X TOTAL CIRCUIT CURRENT (A)																			

02 VOLTAGE DROP
N.T.S

EQUIPMENT LIST				
SYMBOL	QUANTITY	MANUFACTURER	PART NO	DESCRIPTION
[FAC]	1	FIRELITE	ES-50X	FIRE ALARM CONTROL PANEL
[DOC]	1	SPACE AGE ELECTRONICS	SSU00691	DOCUMENT BOX
[CELL]	1	TELGUARD	TG-7FS	COMMUNICATOR
[NAC]	1	FIRELITE	FL-PS6	BOOSTER POWER SUPPLY
[FA]	1	FIRELITE	ANN-80	ANNUNCIATOR
[F]	6	FIRELITE	BG-12LX	ADDRESSABLE MANUAL PULL STATION
[AM]	9	FIRELITE	MMF-300	ADDRESSABLE MONITOR MODULE
[NAC]	4	FIRELITE	CRF-300	ADDRESSABLE RELAY MODULE
[DAS]	4	SYSTEM SENSOR	D4S	PHOTOELECTRIC SENSOR COMPONENT (BY OTHERS)
[S]	4	SYSTEM SENSOR	D4120	DUCT SMOKE DETECTOR (BY OTHERS)
[RTS]	4	SYSTEM SENSOR	RTS2	REMOTE TEST STATION (BY OTHERS)
[S]	1	FIRELITE	SD365 WB300-6	ADDRESSABLE PHOTOELECTRIC SMOKE DETECTOR W/ STANDARD BASE
[F]	1	SYSTEM SENSOR	SSM24-10	ALARM BELL 10" 24VDC, RED
[WP]	9	SYSTEM SENSOR	P2GRKLED	HORN/STROBE, WALL, RED, OUTDOOR
[C]	26	SYSTEM SENSOR	PC2RLED	HORN/STROBE, CEILING, RED
[X]	7	SYSTEM SENSOR	SCRLED	STROBE, CEILING, RED
[SS]	1	DITEK	DTK-120HW	POWER SURGE PROTECTIVE 120VAC
[KX]	1	-	-	KNOX BOX (BY OTHERS)
[FDC]	1	-	-	FIRE DEPARTMENT CONNECTION (BY OTHERS)

03 EQUIPMENT LIST
N.T.S

TELGUARD			
Standby: 24 Hours (1440 minutes)			
Device	Quantity	Current (Amp / Hour)	Total
TG-7FS with 5 Minute Supervision	1	x	60 mA x 24 = 1440 mA
			Subtotal: 1440 mA
			Add 30% for battery depletion: 432 mA
			Standby Subtotal: 1872 mA
Alarm Mode: 5 minutes			
Device	Quantity	Current (Amp / Hour)	Total
TG-7FS with 5 Minute Supervision	1	x	250 mA x 12 = 20.83 mA
			Subtotal: 20.83 mA
			Add 30% for battery depletion: 6.25 mA
			Alarm Mode Subtotal: 27.08 mA
			Standby Subtotal: 1872 mA
			Plus Alarm Mode Subtotal: 27.08 mA
			System Current Demand: 1899.08 mA
			12V Battery recommended: 7A (7000mA)

04 CALCULATION RADIO COMMUNICATOR
N.T.S

CABLE AND WIRE LEGEND				
LABEL	PART NO	AWG	RESISTANCE (D/KFT)	DESCRIPTION
A	18/4 FPLP (ANN)	18	6.5	ANNUNCIATOR - 4 COND. SOLID COPPER FPLP ANALOG UNSHIELDED
B	18/6 FPLP (RTS)	18	6.5	RTS - 6 COND. SOLID COPPER FPLP ANALOG UNSHIELDED
D	18/2 FPLP (SLC)	18	6.5	SLC - 2 COND. SOLID COPPER FPLP ADDRESSABLE UNSHIELDED
E	RJ31X (PHL)	22	16.14	PHONE LINE - RJ31X SOLID COPPER TWISTED SHIELDED
V	14/2 FPLP (NAC)	14	2.6	NAC - 2 COND. SOLID COPPER FPLP ANALOG UNSHIELDED
Z	18/2 FPLP (IDC)	18	6.5	IDC - 2 COND. SOLID COPPER FPLP ANALOG UNSHIELDED