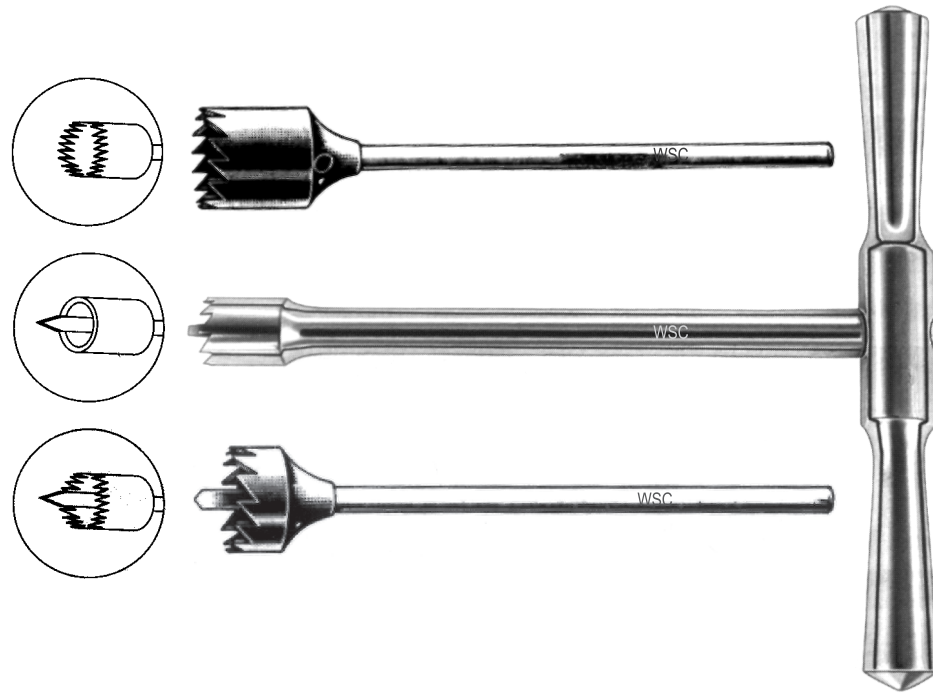


Trephines , Stand



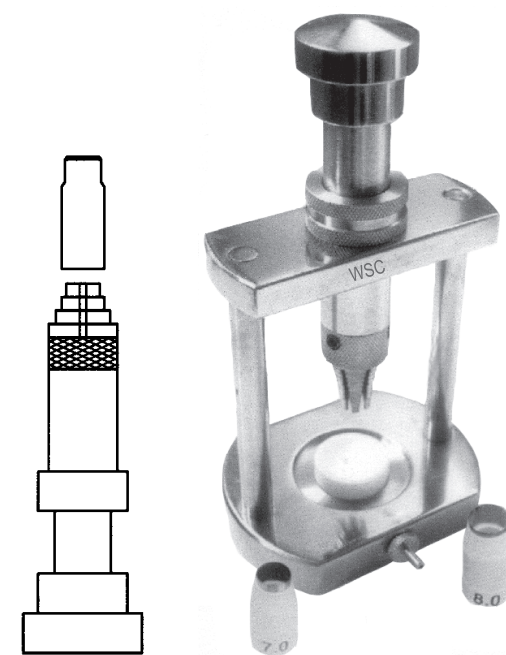
ARRUGA
Trephine Bone
WSC-338 - 7 mm
WSC-338 A - 8 mm
WSC-338 B - 9 mm
WSC-338 C - 10 mm
WSC-338 D - 8 mm with Centre Drill
WSC-338 E - 9 mm with Centre Drill
WSC-338 F - 10 mm with Centre Drill



WESTERN
Corneal Transplant Trephine for Penetrating Keratoplasty. See Through Trephine Blade for Visualizing Cutting Process
Sizes: 5, 5.5, 6, 6.5, 6.75, 7, 7.25, 7.5, 7.75, 8, 8.25, 8.5, 9, 9.5, 10, 10.5, 11, 11.5 & 12 mm
WSC-339



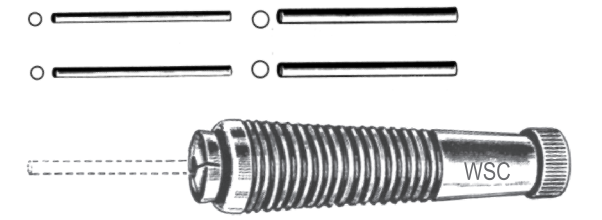
WESTREN
Corneal Transplant Punch Designed for a Perfect Vertical Punching of the Donor Corneal Button for Penetrating Keratoplasty.
The Base of Punch is Provided with a Cavity To Hold the Teflon Block in the Center.
WSC-340 Complete Set Consist of Stand with one Teflon Blocks



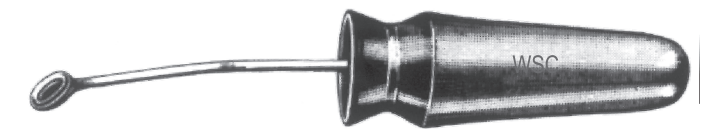
Trephines , Stand



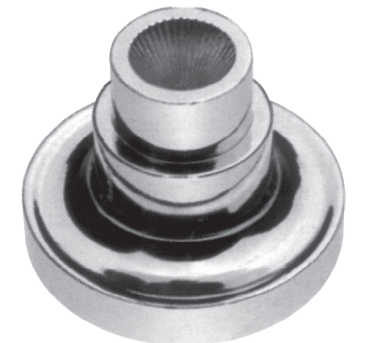
ELLIOT
Scleral Trephine
WSC-341 Handle
WSC-341 A Trephine Blades
Sizes: 1.0 mm Dia
1.5 mm Dia
2.0 mm Dia



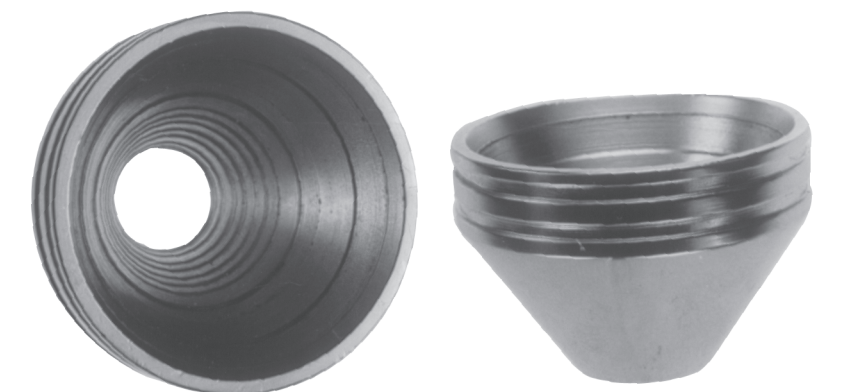
DASTOOR
Iris Erisiphake
WSC-342



TUDOR-THOMAS
Eye Ball Stand
WSC-343



KERATOMETER
WSC-344





Trephines , Stand

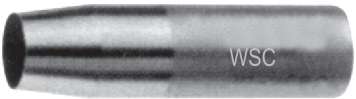


Quality Through Vision

WESTERN

Corneal Transplant Trephine
For Penetrating Keratoplasty
Blade Size: 5, 5.5, 6, 6.5, 6.75, 7, 7.25, 7.5, 7.75,
8, 8.25, 8.5, 9, 9.5, 10 and 11mm

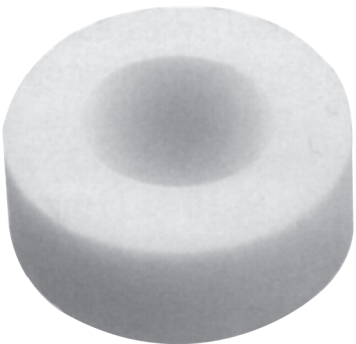
WSC-345



LIBERMAN

Corneal Cutting Block made of Teflon with
Hole in the Center for Release of Air and Fluid
Underneath the Donor button

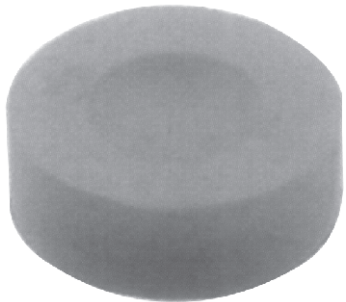
WSC-346



WESTREN

Corneal Cutting Block Made of Silicone with
Hole in the Center for Release of Air and Fluid
Underneath the Donor Button

WSC-347



CASTROVIEJO

Corneal Transplant Trephine
With Adjustable Stop Calibrated in
0.2 mm Increments
Sizes: 5, 5.5, 6, 6.5, 7, 7.5, 8, 8.5,
9, 9.5, 10, 10.5, 11, 11.5 & 12 mm

WSC-348

