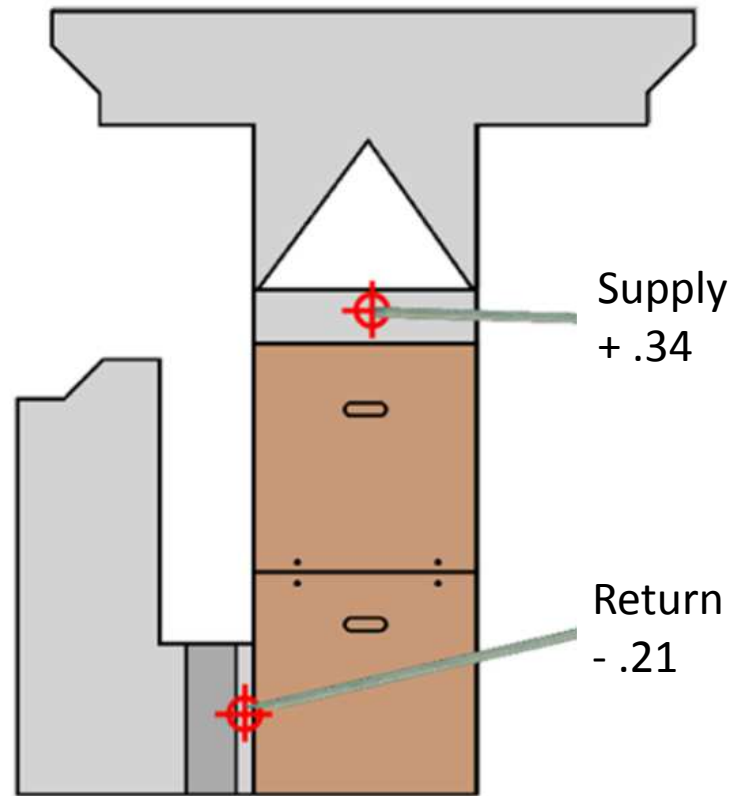


ESP Testing Locations (furnace w/ evap coil)

ESP is the combined static from your supply and return.

Note: Just add the numbers together and don't use negative versus positive when you do the addition. (see Example)



Example:

Supply **.34**

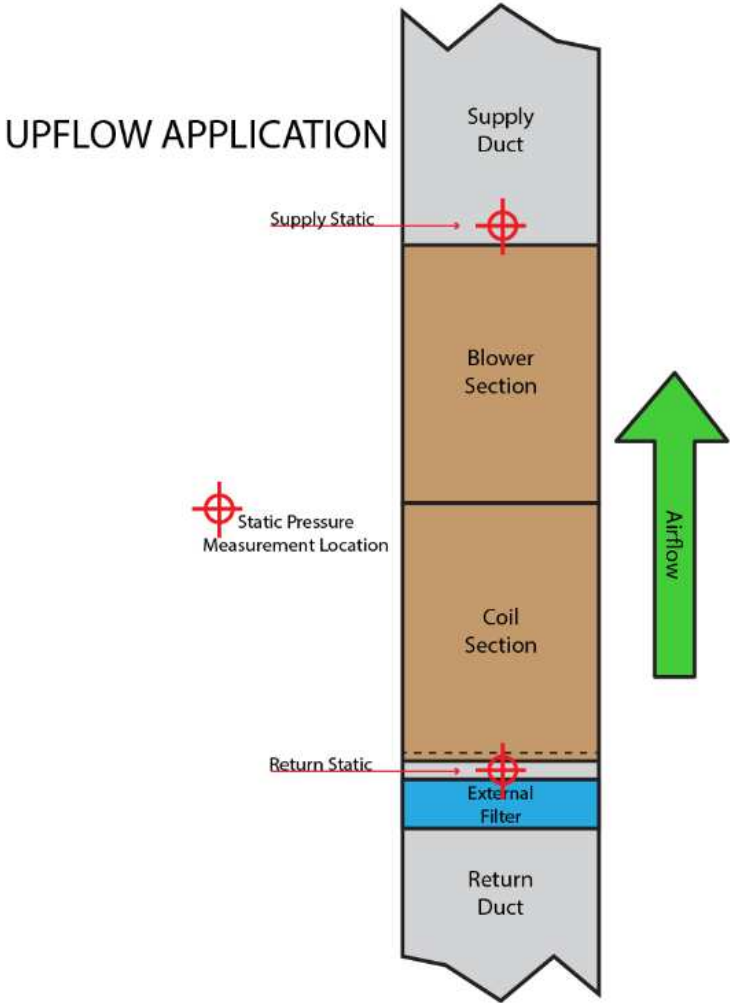
Return **.21**

Total ESP= **.55**

Total External Static Pressure Measurement

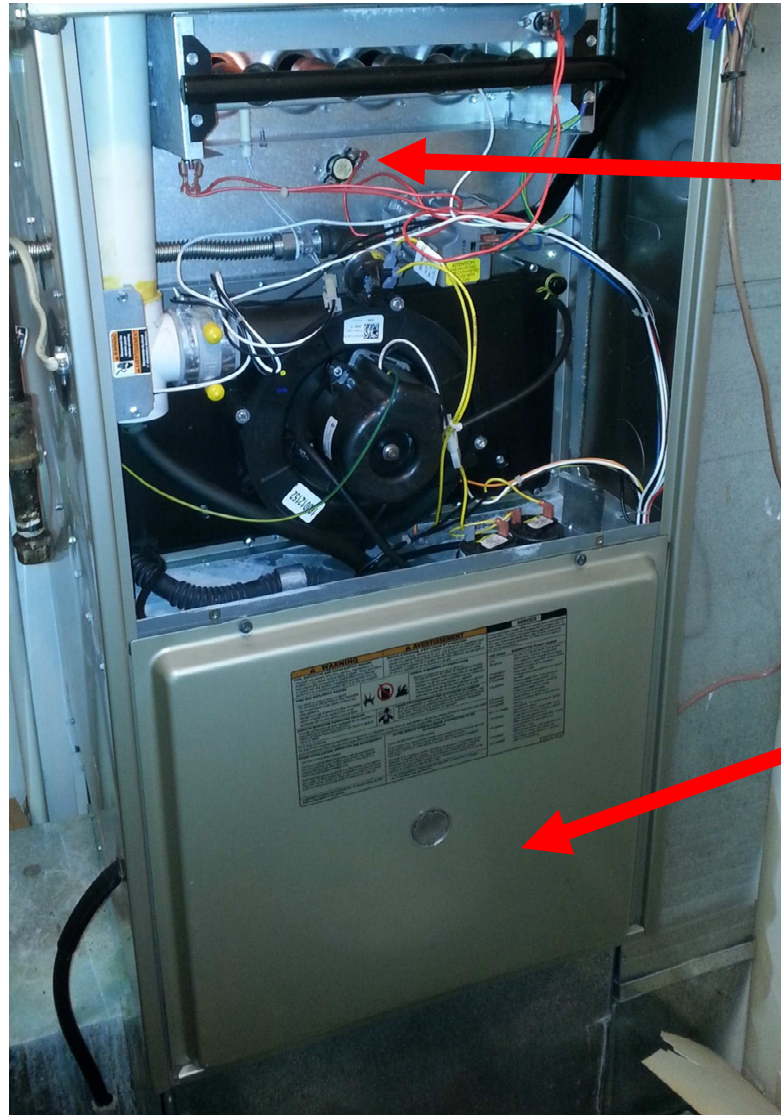


ESP Testing Locations (air handler)



ESP Testing Locations (Real Life)

When you have an application that won't allow you to measure between the furnace and coil, using the main limit location to measure the supply static is an acceptable location.



Main Limit

Bottom Door



What To Do With The Reading

Locate your model & blower speed tap, then locate your measured ESP and where they intersect is your CFM.

| MODELS Input/ Airflow/ Cabinet | Speed Tap | Airflow with Bottom or One Side Return | | | | | | | | | |
|---|--------------|--|------|------|------|------|------|------|------|------|------|
| | | External Static Pressure, Inches W.C. | | | | | | | | | |
| | | 0.1 | 0.2 | 0.3 | 0.4 | 0.5 | 0.6 | 0.7 | 0.8 | 0.9 | 1.0 |
| | High | 880 | 860 | 840 | 820 | 800 | 775 | 750 | 725 | NR | NR |
| | Med-High | 780 | 760 | 740 | 720 | 700 | 675 | 650 | 625 | NR | NR |
| | Med-Low | 700 | 675 | 650 | 620 | 600 | 575 | 550 | 525 | NR | NR |
| | Low | 600 | 575 | 540 | 520 | 500 | 480 | 460 | 425 | NR | NR |
| 60/1000/A | High | 1100 | 1075 | 1040 | 1020 | 1000 | 975 | 950 | 910 | NR | NR |
| | Med-High | 880 | 860 | 840 | 820 | 800 | 775 | 750 | 725 | NR | NR |
| | Med-Low | 780 | 760 | 740 | 720 | 700 | 675 | 650 | 625 | NR | NR |
| | Low | 700 | 675 | 650 | 620 | 600 | 575 | 550 | 525 | NR | NR |
| 60/1200/B 80/1200/B | High | 1650 | 1605 | 1570 | 1525 | 1485 | 1410 | 1350 | 1275 | 1170 | 1060 |
| | Med-High | 1165 | 1185 | 1175 | 1165 | 1150 | 1140 | 1100 | 1050 | 970 | 875 |
| | Med-Low | 895 | 915 | 935 | 940 | 940 | 920 | 905 | 860 | 815 | 750 |
| | Low | 710 | 725 | 725 | 725 | 720 | 700 | 685 | 660 | 625 | 560 |
| 80/2000/C 100/2000/C | High | 2300 | 2210 | 2120 | 2020 | 1930 | 1830 | 1715 | 1595 | 1480 | 1350 |
| | Med-High | 1950 | 1900 | 1830 | 1755 | 1680 | 1595 | 1500 | 1390 | 1270 | 1155 |
| | Med-Low | 1610 | 1545 | 1490 | 1440 | 1390 | 1315 | 1230 | 1155 | 1050 | 920 |
| | Low | 1325 | 1270 | 1225 | 1175 | 1105 | 1045 | 990 | 905 | 890 | 790 |
| 80/1600/C 100/1600/C | High | 1960 | 1955 | 1925 | 1890 | 1830 | 1765 | 1695 | 1615 | 1600 | 1485 |
| | Med-High | 1565 | 1560 | 1560 | 1575 | 1545 | 1530 | 1475 | 1425 | 1365 | 1260 |
| | Med-Low | 1230 | 1275 | 1285 | 1300 | 1310 | 1300 | 1280 | 1245 | 1190 | 1070 |
| | Low | 930 | 945 | 965 | 975 | 975 | 975 | 975 | 950 | 910 | 850 |

