



# Nisley<sup>TM</sup>

Cabinet, LLC

Wholesale Furniture Mfg.



Bedroom Collections | Occasional Tables | Kitchen Islands | Vanities



# Kitchen Islands

*Customize the perfect kitchen island for you!*

**Step 1:** Select your base\* style and size.

**Step 2:** Select any available base feature options.

**Step 3:** Select your top\* style, size† and features.

\* All island bases and tops are priced and sold separately.

† Add 7" to 10" of overhang if using barstools at the island.



Bridgeport | Brookline | Constance Bay | Jefferson City

Kingston | Oceanside | Roseburg | Traditional | Turned Leg

Designer Series | Designer Series Turned Leg | Table Bases | Table Pullouts

# Bridgeport Island Bases



**IS-2071**



**IS-2073**



Shown with optional  
slideout wastebasket and  
slideout cutting board.

**IS-2076**



**IS-2074**



Shown with optional  
3 Tier Pullout

**IS-2078**

## Available Feature Options



#4550  
**Slideout  
Wastebasket**  
w/2 wastebaskets



#4552  
**3 Tier  
Pullout**

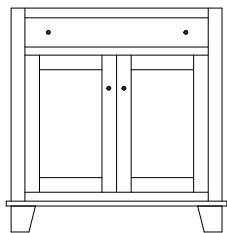


#4553  
**Pullout  
Cutting Board**  
w/hole cutout

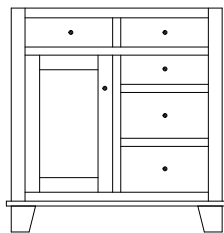


#4554  
**Sliding Shelf**  
replaces an  
adjustable shelf

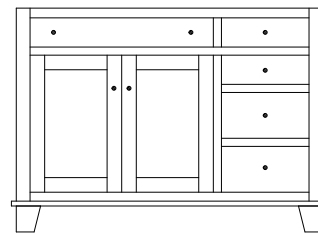
# Bridgeport Island Bases



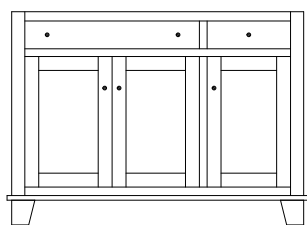
**IS-2071**  
32½"w 34½"h 24"d  
w/1 drawer 2 doors  
w/1 adjustable shelf



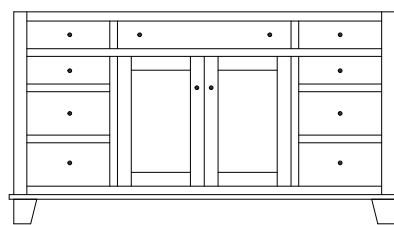
**IS-2073**  
32½"w 34½"h 24"d  
w/5 drawers 1 door  
w/1 adjustable shelf



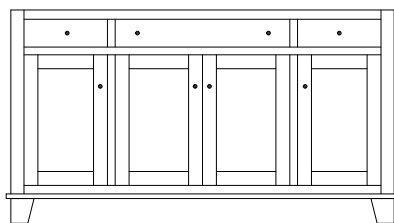
**IS-2074**  
47¼"w 34½"h 24"d  
w/5 drawers 2 doors  
w/1 adjustable shelf



**IS-2076**  
47¼"w 34½"h 24"d  
w/2 drawers 3 doors  
w/2 adjustable shelves



**IS-2078**  
62"w 34½"h 24"d  
w/9 drawers 2 doors  
w/1 adjustable shelves



**IS-2081**  
62"w 34½"h 24"d  
w/3 drawers 4 doors  
w/3 adjustable shelves

## Standard Hardware



K527 DACM

See the *Hardware & Stains* section for available hardware upgrades.



#4555  
**Mixer Lift**  
w/pullout shelf  
(in place of regular  
drawer and door)



#4556  
**Wheel Caster**  
w/brake hidden by  
adding skirting



#4561  
**Wine Rack**  
in place of door



#4570  
**Leg Extension**



# Brookline Island Bases



IS-802



IS-803



IS-801



Shown with optional  
slideout wastebasket.

IS-805



IS-804



IS-808

## Available Feature Options



#4550  
Slideout  
Wastebasket  
w/2 wastebaskets



#4552  
3 Tier  
Pullout

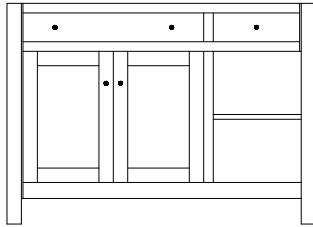


#4553  
Pullout  
Cutting Board  
w/hole cutout

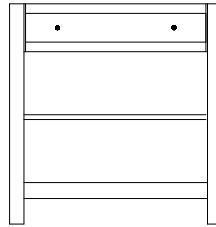


#4554  
Sliding Shelf  
replaces an  
adjustable shelf

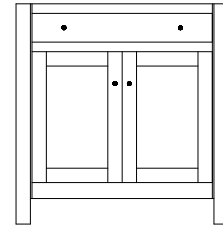
# Brookline Island Bases



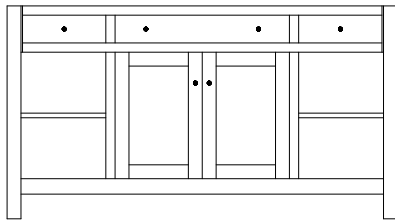
**IS-801**  
47¾"w 34½"h 24½"d  
w/2 drawers 2 doors  
w/1 adjustable shelf, 1 open shelf



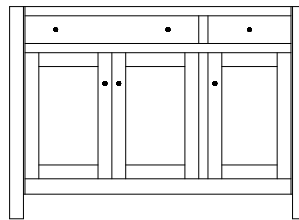
**IS-802**  
32¾"w 34½"h 24½"d  
w/1 drawer  
w/1 open shelf



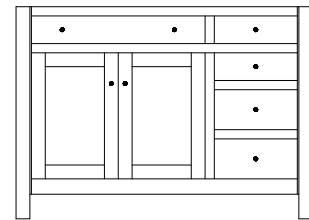
**IS-803**  
32¾"w 34½"h 24½"d  
w/1 drawer 2 doors  
w/1 adjustable shelf



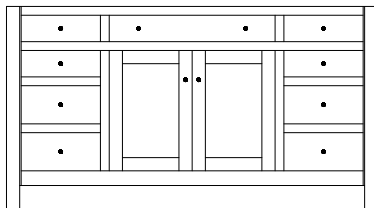
**IS-804**  
62¾"w 34½"h 24½"d  
w/3 drawers 2 doors  
1 adjustable shelf, 2 open shelves



**IS-805**  
47¾"w 34½"h 24½"d  
w/2 drawers 3 doors  
w/2 adjustable shelves



**IS-806**  
47¾"w 34½"h 24½"d  
w/5 drawers 2 doors  
w/1 adjustable shelf



**IS-808**  
62¾"w 34½"h 24½"d  
w/9 drawers 2 doors  
w/1 adjustable shelf

## Standard Hardware



4424-ORB/4425-ORB

See the *Hardware & Stains* section for available hardware upgrades.



#4555  
**Mixer Lift**  
w/pullout shelf  
(in place of regular  
drawer and door)



#4558  
**Brookline Caster**



#4560  
**Concealed Caster**



#4561  
**Wine Rack**  
in place of door

# Constance Bay Island Bases



IS-205



IS-206



Shown with optional slideout wastebasket. IS-207



IS-209



IS-211

## Available Feature Options



#4550  
Slideout  
Wastebasket  
w/2 wastebaskets



#4552  
3 Tier  
Pullout

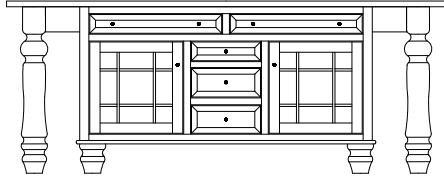


#4553  
Pullout  
Cutting Board  
w/hole cutout

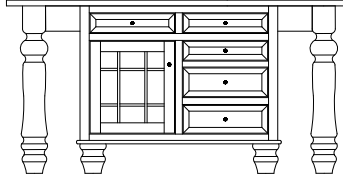


#4554  
Sliding Shelf  
replaces an  
adjustable shelf

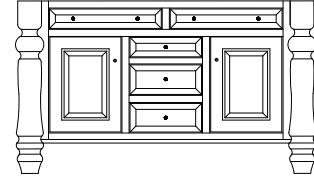
# Constance Bay Island Bases



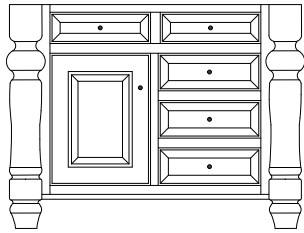
**IS-205**  
92"w 34½"h 24½"d  
w/7 drawers 2 doors  
w/2 adjustable shelves



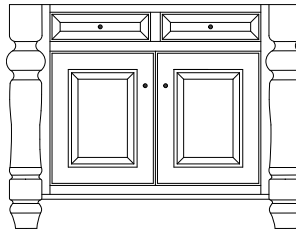
**IS-206**  
75"w 34½"h 24½"d  
w/7 drawers 1 door  
w/1 adjustable shelf



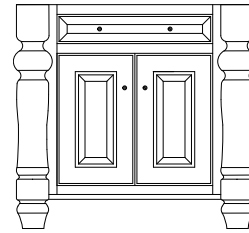
**IS-207**  
62½"w 34½"h 24½"d  
w/5 drawers 2 doors  
w/2 adjustable shelves



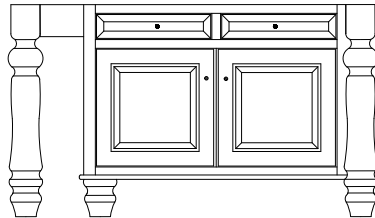
**IS-208**  
45"w 34½"h 24½"d  
w/5 drawers 1 door  
w/1 adjustable shelf



**IS-209**  
45"w 34½"h 24½"d  
w/2 drawers 2 doors  
w/1 adjustable shelf



**IS-210**  
36½"w 34½"h 24½"d  
w/1 drawer 2 doors  
w/1 adjustable shelf



**IS-211**  
65¼"w 34½"h 24½"d  
w/2 drawers 2 doors  
w/1 adjustable shelf

## Standard Hardware



1¼" Wood Knobs

See the *Hardware & Stains* section for available hardware upgrades.



#4555  
**Mixer Lift**  
w/pullout shelf  
(in place of regular  
drawer and door)



#4556  
**Wheel Caster**  
w/brake hidden by  
adding skirting



#4561  
**Wine Rack**  
in place of door



# Jefferson City Traditional Island Bases



IS-73-JC



IS-71-JC



Shown with optional  
slideout wastebasket.

IS-76-JC



IS-74-JC



IS-78-JC

## Available Feature Options



#4550  
Slideout  
Wastebasket  
w/2 wastebaskets



#4551  
Tiltout  
Wastebasket  
w/1 wastebasket

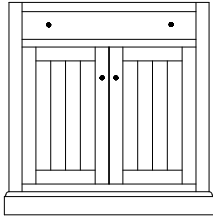


#4552  
3 Tier  
Pullout

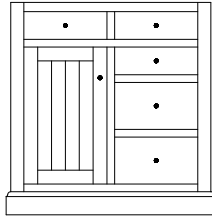


#4553  
Pullout  
Cutting Board  
w/hole cutout

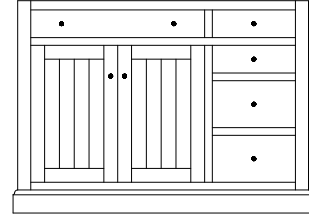
# Jefferson City Traditional Island Bases



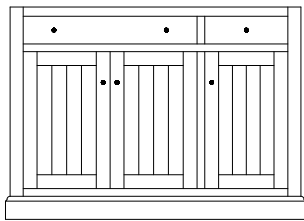
**IS-71-JC**  
32½"w 34½"h 24"d  
w/1 drawer 2 doors  
w/1 adjustable shelf



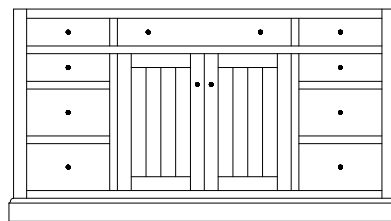
**IS-73-JC**  
32½"w 34½"h 24"d  
w/5 drawers 1 door  
w/1 adjustable shelf



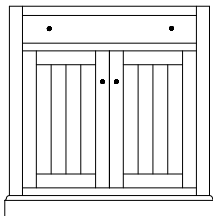
**IS-74-JC**  
47¼"w 34½"h 24"d  
w/5 drawers 2 doors  
w/1 adjustable shelf



**IS-76-JC**  
47¼"w 34½"h 24"d  
w/2 drawers 3 doors  
w/2 adjustable shelves



**IS-78-JC**  
62"w 34½"h 24"d  
w/9 drawers 2 doors  
w/1 adjustable shelf



**IS-79-JC**  
32½"w 34½"h 18"d  
w/1 drawer 2 doors  
w/1 adjustable shelf

## Standard Hardware



1¼" Wood Knobs

See the *Hardware & Stains* section for available hardware upgrades.



#4554  
**Sliding Shelf**  
replaces an  
adjustable shelf



#4555  
**Mixer Lift**  
w/pullout shelf  
(in place of regular  
drawer and door)



#4559  
**Concealed Caster**



#4561  
**Wine Rack**  
in place of door

# Jefferson City Turned Leg Island Bases



IS-68-JC



IS-69L-JC



IS-84-JC



Shown with optional  
slideout wastebasket.

IS-98-JC



IS-96-JC



Shown with optional  
slideout wastebasket.

IS-86-JC



IS-99R-JC



*Dress up your island with one of these specialty legs!*

- A #4562 Fluted
- B #4563 Reeded
- C #4564 Diamond
- D #4565 Rope Twist

## Specialty Leg Options

## Available Feature Options



#4550  
Slideout  
Wastebasket  
w/2 wastebaskets



#4551  
Tiltout  
Wastebasket  
w/1 wastebasket

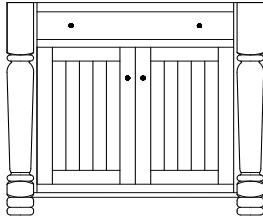


#4552  
3 Tier  
Pullout

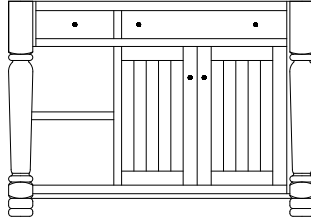


#4553  
Pullout  
Cutting Board  
w/hole cutout

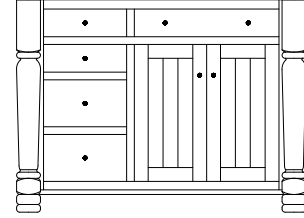
# Jefferson City Turned Leg Island Bases



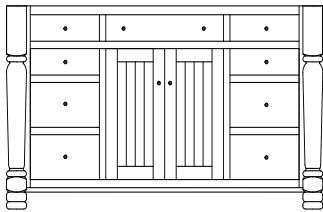
**IS-68-JC**  
37½"w 34½"h 24½"d  
w/1 drawer 2 doors  
w/1 adjustable shelf



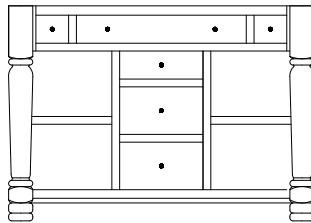
**IS-69L-JC / IS-69R-JC**  
49"w 34½"h 24½"d  
w/2 drawers 2 doors  
w/1 adjustable shelf, 1 open shelf



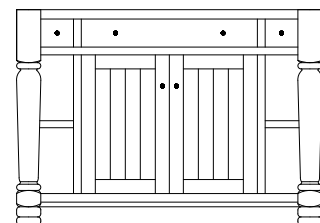
**IS-84-JC**  
49"w 34½"h 24½"d  
w/5 drawers 2 doors  
w/1 adjustable shelf



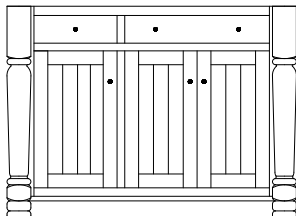
**IS-86-JC**  
61¾"w 34½"h 24½"d  
w/9 drawers 2 doors  
w/1 adjustable shelf



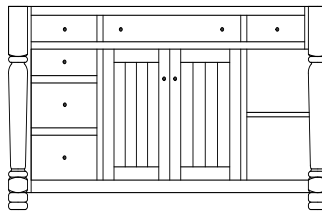
**IS-94-JC**  
49"w 34½"h 24½"d  
w/6 drawers, 2 open shelves



**IS-96-JC**  
49"w 34½"h 24½"d  
w/3 drawers 2 doors  
w/1 adjustable shelf, 2 open shelves



**IS-98-JC**  
49"w 34½"h 24½"d  
w/2 drawers 3 doors  
w/2 adjustable shelves



**IS-99L-JC / IS-99R-JC**  
62"w 34½"h 24½"d  
w/6 drawers 2 doors  
w/1 adjustable shelf, 1 open shelf

## Standard Hardware



1¼" Wood Knobs

See the *Hardware & Stains* section for available hardware upgrades.



#4554  
**Sliding Shelf**  
replaces an  
adjustable shelf



#4555  
**Mixer Lift**  
w/pullout shelf  
(in place of regular  
drawer and door)



#4556  
**Wheel Caster**  
w/brake hidden by  
adding skirting



#4557  
**3" Ball Caster**  
w/brake



#4561  
**Wine Rack**  
in place of door



# Kingston Island Bases



IS-1245



Shown with Venice bar stools

## Available Feature Options



#4550  
**Slideout  
Wastebasket**  
w/2 wastebaskets



#4572  
**2 Tier  
Pullout**

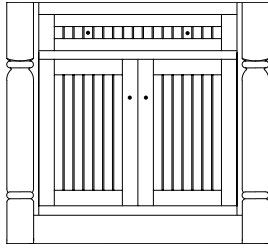


#4552  
**3 Tier  
Pullout**

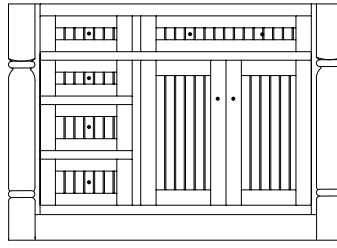


#4553  
**Pullout  
Cutting Board**  
w/hole cutout

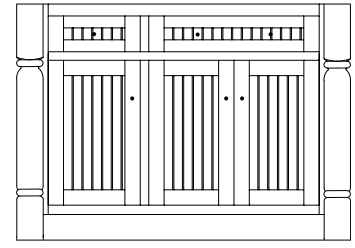
# Kingston Island Bases



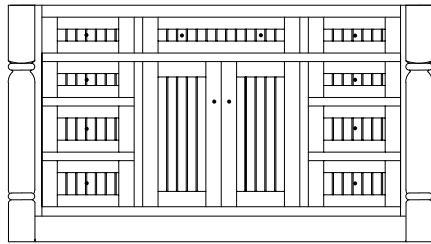
**IS-1240**  
37½"w 34½"h 24½"d  
w/1 drawer, 2 doors  
w/1 adjustable shelf



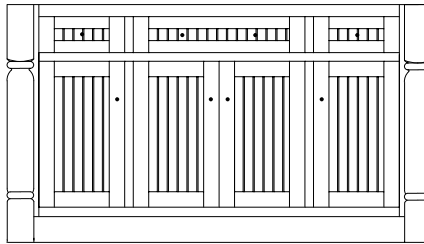
**IS-1241**  
49¼"w 34½"h 24½"d  
w/5 drawers, 2 doors  
w/1 adjustable shelf



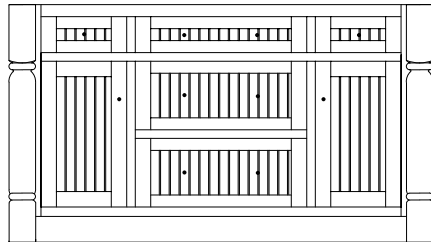
**IS-1242**  
49¼"w 34½"h 24½"d  
w/2 drawers, 3 doors  
w/2 adjustable shelves



**IS-1243**  
62"w 34½"h 24½"d  
w/9 drawers, 2 doors  
w/1 adjustable shelf



**IS-1244**  
62"w 34½"h 24½"d  
w/3 drawers, 4 doors  
w/3 adjustable shelves



**IS-1245**  
62"w 34½"h 24½"d  
w/5 drawers, 2 doors  
w/2 adjustable shelves

## Standard Hardware



53710 GPH/53715 GPH

See the *Hardware & Stains* section for available hardware upgrades.



#4554  
**Sliding Shelf**  
replaces an  
adjustable shelf



#4559  
**Concealed Caster**



#4570  
**Leg Extension**

# Oceanside Island Bases



IS-662



IS-663



IS-664



Shown with optional  
slideout wastebasket.

IS-665



IS-668

## Available Feature Options



#4550  
Slideout  
Wastebasket  
w/2 wastebaskets

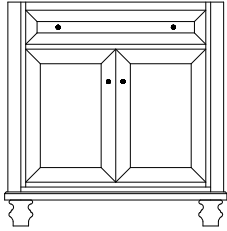


#4552  
3 Tier  
Pullout

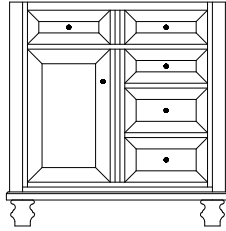


#4554  
Sliding Shelf  
replaces an  
adjustable shelf

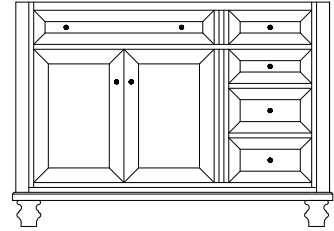
# Oceanside Island Bases



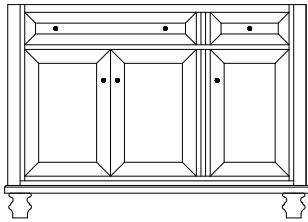
**IS-662**  
 33¼"w 34½"h 24½"d  
 w/1 drawer 2 doors  
 w/1 adjustable shelf



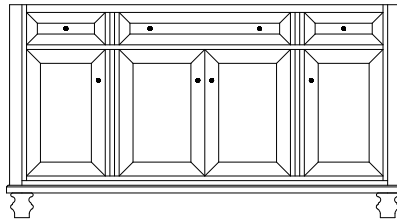
**IS-663**  
 33¼"w 34½"h 24½"d  
 w/5 drawers 1 door  
 w/1 adjustable shelf



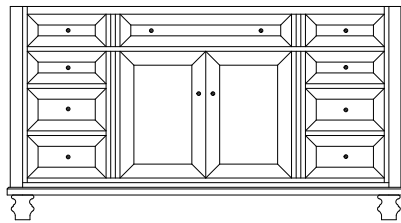
**IS-664**  
 48¼"w 34½"h 24½"d  
 w/5 drawers 2 doors  
 w/1 adjustable shelf



**IS-665**  
 48¼"w 34½"h 24½"d  
 w/2 drawers 3 doors  
 w/2 adjustable shelves



**IS-666**  
 63¼"w 34½"h 24½"d  
 w/3 drawers 4 doors  
 w/3 adjustable shelves



**IS-668**  
 63¼"w 34½"h 24½"d  
 w/9 drawers 2 doors  
 w/1 adjustable shelf

## Standard Hardware



1586-ORB

See the *Hardware & Stains* section for available hardware upgrades.



#4555  
**Mixer Lift**  
 w/pullout shelf  
 (in place of regular  
 drawer and door)



#4556  
**Wheel Caster**  
 w/brake hidden by  
 adding skirting



#4561  
**Wine Rack**  
 in place of door



# Roseburg Island Bases



**IS-1026**



Shown with optional  
slideout wastebasket.

**IS-1027**

## Available Feature Options



#4550  
**Slideout  
Wastebasket**  
w/2 wastebaskets

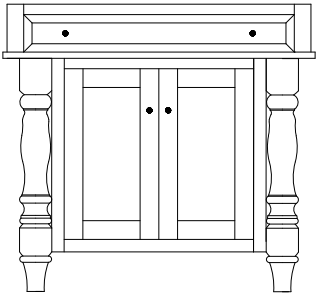


#4552  
**3 Tier  
Pullout**

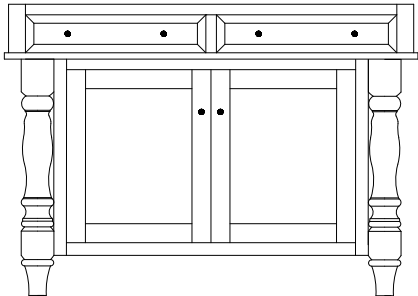


#4554  
**Sliding Shelf**  
replaces an  
adjustable shelf

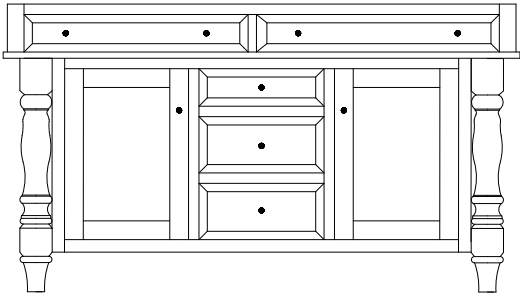
# Roseburg Island Bases



**IS-1025**  
 37½"w 34½"h 24½"d  
 w/1 drawer 2 doors  
 w/1 adjustable shelf



**IS-1026**  
 49"w 34½"h 24½"d  
 w/2 drawers 2 doors  
 w/1 adjustable shelf



**IS-1027**  
 62"w 34½"h 24½"d  
 w/5 drawers 2 doors  
 w/2 adjustable shelves



*See the Hardware & Stains section for available hardware upgrades.*



#4556  
**Wheel Caster**  
 w/brake hidden by  
 adding skirting



#4561  
**Wine Rack**  
 in place of door

# Traditional Island Bases



IS-79



IS-74



Shown with optional mixer lift and slide out shelf. IS-76



IS-78

## Available Feature Options



#4550  
Slideout  
Wastebasket  
w/2 wastebaskets



#4551  
Tiltout  
Wastebasket  
w/1 wastebasket

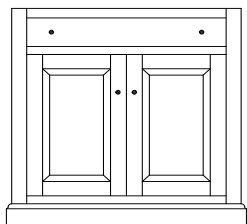


#4552  
3 Tier  
Pullout

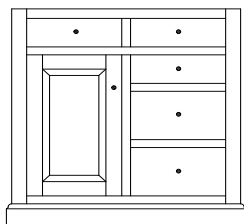


#4553  
Pullout  
Cutting Board  
w/hole cutout

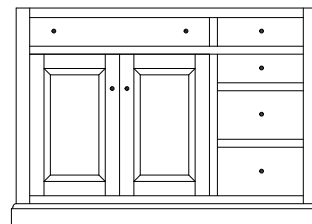
# Traditional Island Bases



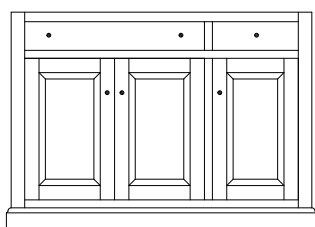
**IS-71**  
32½"w 34½"h 24"d  
w/1 drawer 2 doors  
w/1 adjustable shelf



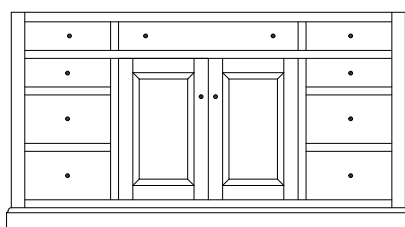
**IS-73**  
32½"w 34½"h 24"d  
w/5 drawers 1 door  
w/1 adjustable shelf



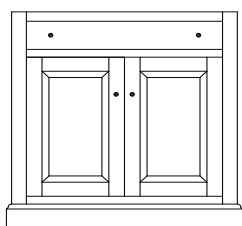
**IS-74**  
47¼"w 34½"h 24"d  
w/5 drawers 2 doors  
w/1 adjustable shelf



**IS-76**  
47¼"w 34½"h 24"d  
w/2 drawers 3 doors  
w/2 adjustable shelves



**IS-78**  
62"w 34½"h 24"d  
w/9 drawers 2 doors  
w/1 adjustable shelf



**IS-79**  
32½"w 34½"h 18"d  
w/1 drawer 2 doors  
w/1 adjustable shelf

## Standard Hardware



1¼" Wood Knobs

See the *Hardware & Stains* section for available hardware upgrades.



#4554  
**Sliding Shelf**  
replaces an  
adjustable shelf



#4555  
**Mixer Lift**  
w/pullout shelf  
(in place of regular  
drawer and door)



#4559  
**Concealed Caster**



#4561  
**Wine Rack**  
in place of door



# Turned Leg Island Bases



IS-68



IS-69 R



IS-84



Shown with optional slideout wastebasket.

IS-86



IS-94



IS-96



IS-98



Shown with optional slideout wastebasket.

IS-99 L

## Available Feature Options



*Dress up your island with one of these specialty legs!*

- A #4562 Fluted
- B #4563 Reeded
- C #4564 Diamond
- D #4565 Rope Twist

### Specialty Leg Options



#4550 Slideout Wastebasket w/2 wastebaskets



#4551 Tiltout Wastebasket w/1 wastebasket

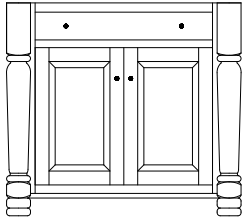


#4552 3 Tier Pullout

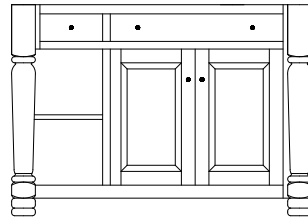


#4553 Pullout Cutting Board w/hole cutout

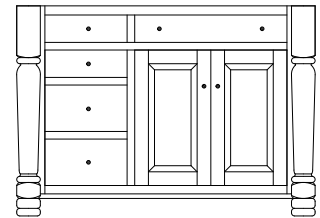
# Turned Leg Island Bases



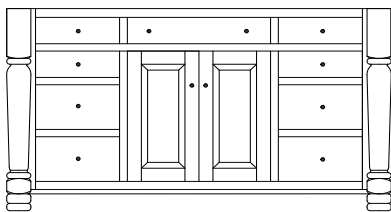
**IS-68**  
37½"w 34½"h 24½"d  
w/1 drawer 2 doors  
w/1 adjustable shelf



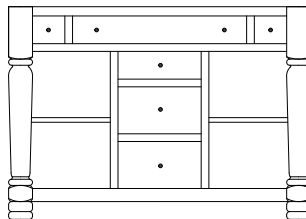
**IS-69 L / IS-69 R**  
49"w 34½"h 24½"d  
w/2 drawers, 2 doors  
w/1 adjustable shelf, 1 open shelf



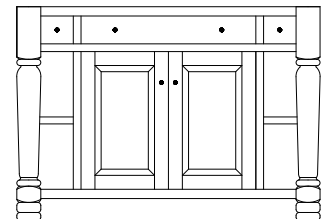
**IS-84**  
49"w 34½"h 24½"d  
w/5 drawers 2 doors  
w/1 adjustable shelf



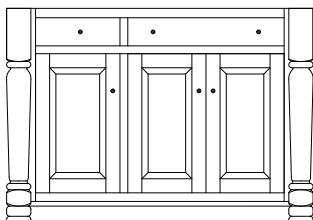
**IS-86**  
61¾"w 34½"h 24½"d  
w/9 drawers 2 doors  
w/1 adjustable shelf



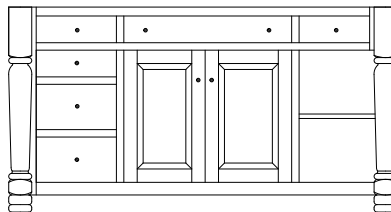
**IS-94**  
49"w 34½"h 24½"d  
w/6 drawers  
w/2 open shelves



**IS-96**  
49"w 34½"h 24½"d  
w/3 drawers, 2 doors  
w/1 adjustable shelf, 2 open shelves



**IS-98**  
49"w 34½"h 24½"d  
w/2 drawers 3 doors  
w/2 adjustable shelves



**IS-99 L / IS-99 R**  
62"w 34½"h 24½"d  
w/6 drawers 2 doors  
w/1 adjustable shelf, 1 open shelf

## Standard Hardware



1¼" Wood Knobs

See the *Hardware & Stains* section for available hardware upgrades.



#4554  
**Sliding Shelf**  
replaces an  
adjustable shelf



#4555  
**Mixer Lift**  
w/pullout shelf  
(in place of regular  
drawer and door)



#4556  
**Wheel Caster**  
w/brake hidden by  
adding skirting



#4557  
**3" Ball Caster**  
w/brake



#4561  
**Wine Rack**  
in place of door

# Designer Series Island Bases



All bases come standard with:  
Undermount Soft Close Slides & Soft Close Doors



*Choose the Designer Series Island to perfectly fit your need in 3 easy steps:*

**Step 1:** Island Layout

**Step 2:** Base Style

**Step 3:** Door/Drawer Style



**DSB-240**



**DSB-245**



**DSB-246**

## Step 2 (Base Style)



#50



#51



#52



#53



#54

## Step 3 (Door/Drawer Style)



#35



#36



#37



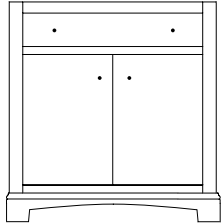
#38



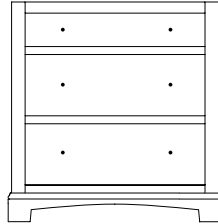
#39

# Designer Series Island Bases

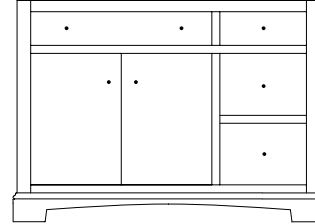
## Step 1 (Island Layout)



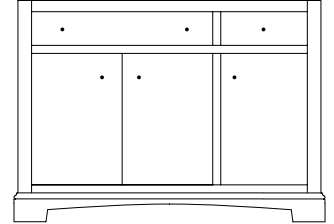
**DSB-240**  
32½"w 34½"h 24½"d  
w/1 drawer, 2 doors



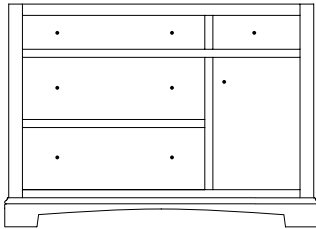
**DSB-241**  
32½"w 34½"h 24½"d  
w/3 drawers



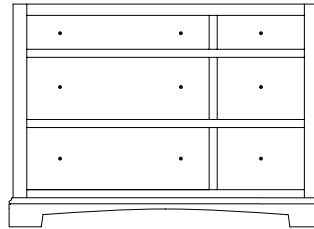
**DSB-245**  
47¼"w 34½"h 24½"d  
w/4 drawers, 2 doors



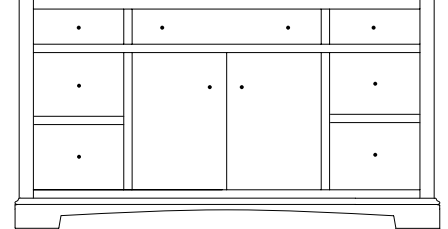
**DSB-246**  
47¼"w 34½"h 24½"d  
w/2 drawers, 3 doors



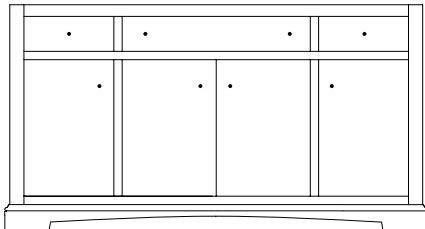
**DSB-247**  
47¼"w 34½"h 24½"d  
w/4 drawers, 1 door



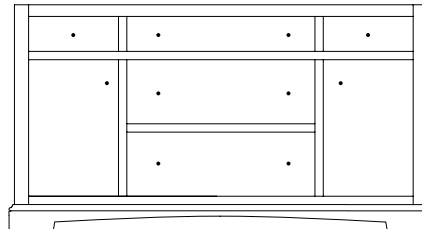
**DSB-248**  
47¼"w 34½"h 24½"d  
w/6 drawers



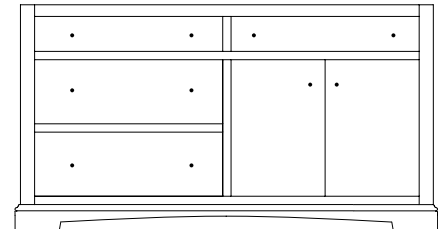
**DSB-251**  
62"w 34½"h 24½"d  
w/7 drawers, 2 doors



**DSB-252**  
62"w 34½"h 24½"d  
w/3 drawers, 4 doors



**DSB-253**  
62"w 34½"h 24½"d  
w/5 drawers, 2 doors



**DSB-254**  
62"w 34½"h 24½"d  
w/4 drawers, 2 doors

## Available Feature Options



#4550  
**Slideout  
Wastebasket**  
w/2 wastebaskets



#4572  
**2 Tier  
Pullout**



#4553  
**Pullout  
Cutting Board**  
w/hole cutout



#4571  
**Adjustable  
Sliding Shelf**  
replaces an  
adjustable shelf



#4559  
**Concealed Caster**



#4570  
**Leg Extension**

# Designer Series Turned Leg Island Bases



All bases come standard with:  
Undermount Soft Close Slides & Soft Close Doors



*Choose the Designer Series Island to perfectly fit your need in 3 easy steps:*

**Step 1:** Island Layout

**Step 2:** Leg Style

**Step 3:** Door/Drawer Style



**DSL-747**



**DSL-746**



**DSL-753**

**Step 2 (Leg Style)**



#65 #66 #67 #68 #69

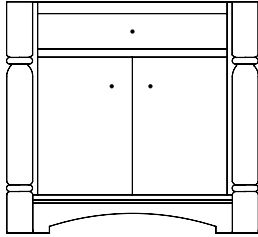
**Step 3 (Door/Drawer Style)**



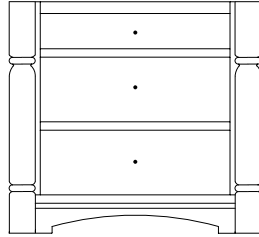
#35 #36 #37 #38 #39

# Designer Series Turned Leg Island Bases

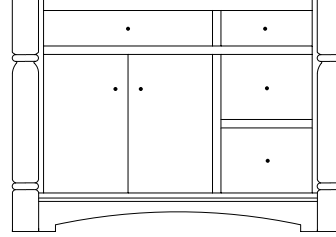
## Step 1 (Island Layout)



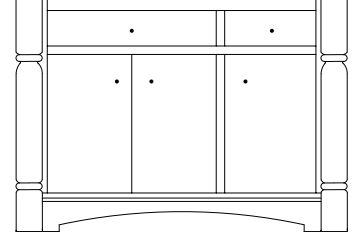
**DSL-740**  
37½"w 34½"h 24½"d  
w/1 drawer, 2 doors



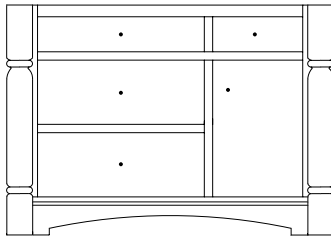
**DSL-741**  
37½"w 34½"h 24½"d  
w/3 drawers



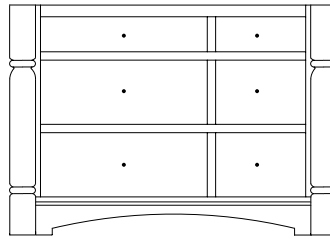
**DSL-745**  
49"w 34½"h 24½"d  
w/4 drawers, 2 doors



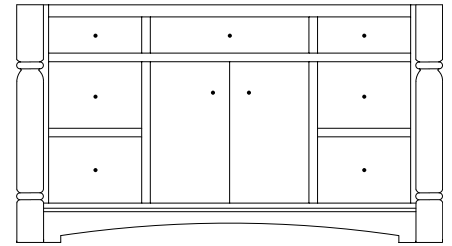
**DSL-746**  
49"w 34½"h 24½"d  
w/2 drawers, 3 doors



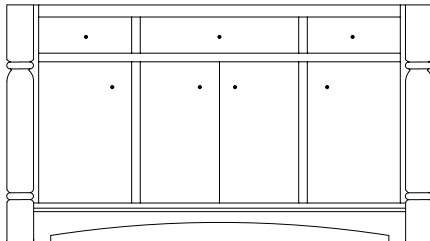
**DSL-747**  
49"w 34½"h 24½"d  
w/4 drawers, 1 door



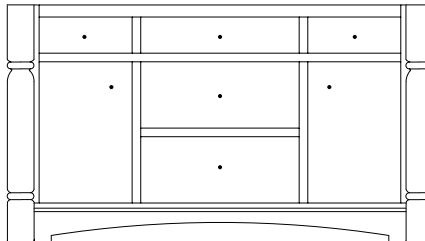
**DSL-748**  
49"w 34½"h 24½"d  
w/6 drawers



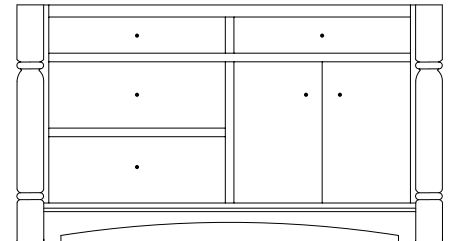
**DSL-751**  
61¾"w 34½"h 24½"d  
w/7 drawers, 2 doors



**DSL-752**  
61¾"w 34½"h 24½"d  
w/3 drawers, 4 doors



**DSL-753**  
61¾"w 34½"h 24½"d  
w/5 drawers, 2 doors



**DSL-754**  
61¾"w 34½"h 24½"d  
w/4 drawers, 2 doors

## Available Feature Options



#4550  
**Slideout  
Wastebasket**  
w/2 wastebaskets



#4572  
**2 Tier  
Pullout**



#4553  
**Pullout  
Cutting Board**  
w/hole cutout



#4571  
**Adjustable  
Sliding Shelf**  
replaces an  
adjustable shelf



#4559  
**Concealed  
Caster**



#4570  
**Leg Extension**



# Table Bases



Top is not included.  
See available top options.

**IS-5130 (Table Height)**

2¼" Square Legs | 28¼"h

**IS-5136 (Counter Height)**

2¼" Square Legs | 34½"h

**IS-5142 (Bar Height)**

2¼" Square Legs | 40½"h



Top is not included.  
See available top options.

**IS-5230 (Table Height)**

4" Square Legs | 28¼"h

**IS-5236 (Counter Height)**

4" Square Legs | 34½"h

**IS-5242 (Bar Height)**

4" Square Legs | 40½"h

# Table Bases

**IS-5330 (Table Height)**

4" Turned Legs | 28¼"h

**IS-5336 (Counter Height)**

4" Turned Legs | 34½"h

**IS-5342 (Bar Height)**

4" Turned Legs | 40½"h



Top is not included.  
See available top options.

**IS-5430 (Table Height)**

5" Constance Bay Legs | 28¼"h

**IS-5436 (Counter Height)**

5" Constance Bay Legs | 34½"h

**IS-5442 (Bar Height)**

5" Constance Bay Legs | 40½"h



Top is not included.  
See available top options.

# Table Pullouts



*\* Available on all Islands \**



IS-1246



DSL-746

# Table Pullouts



**IS-808**

Shown with Table Retracted.



**IS-808**

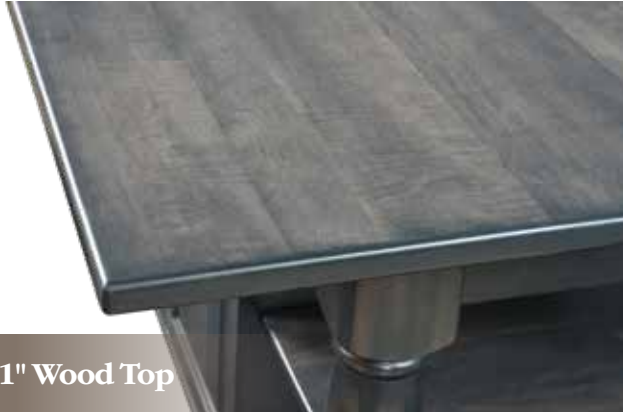
Shown with Table Pullout.



**IS-808**

Shown with  
Table Pullout and Butterfly Leaf.

# Wood & Steel Island Tops



**1" Wood Top**

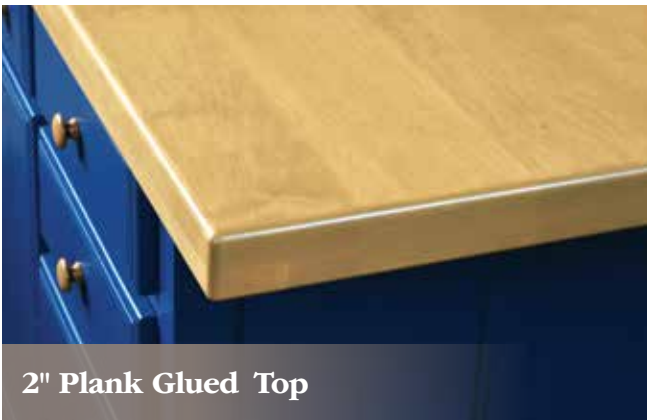


*Shown in Maple  
with rounded edges*



*Shown in Walnut  
with square edges*

**1 1/2" or 2" Butcher Block Tops  
w/Rounded or Square Edges**



**2" Plank Glued Top**



**1 1/2" Reclaimed Barnwood Top**



**1 1/4" or 1 3/4" Rough Sawn Top**



**1 1/4" Stainless Steel Top**

*Available Feature Option:  
Drop Leafs*





# Concrete & Granite Island Tops

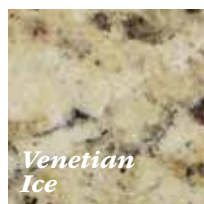
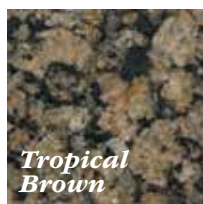
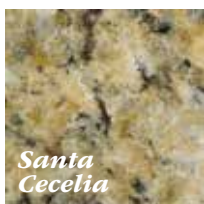
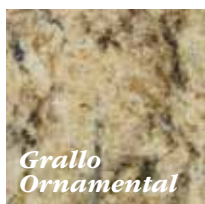
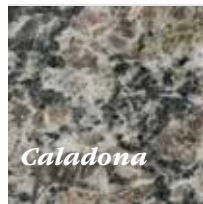
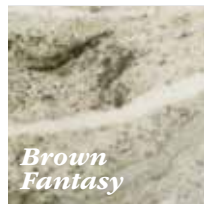
*Add 7" to 10" of overhang if using barstools at the island.*



## Available Colors



## Available Colors





# Island Extension Tops



## Available Sizes

36" x 42" w/2 - 12" leaves

36" x 48" w/2 - 12" leaves

36" x 54" w/2 - 12" leaves

36" x 60" w/2 - 12" leaves  
w/2 additional leaves

36" x 66" w/2 - 12" leaves  
w/2 additional leaves

36" x 72" w/2 - 12" leaves  
w/2 additional leaves

42" x 42" w/2 - 12" leaves

42" x 48" w/2 - 12" leaves

42" x 54" w/2 - 12" leaves

42" x 60" w/2 - 12" leaves  
w/2 additional leaves

42" x 66" w/2 - 12" leaves  
w/2 additional leaves

42" x 72" w/2 - 12" leaves  
w/2 additional leaves

48" x 42" w/2 - 12" leaves

48" x 48" w/2 - 12" leaves

48" x 54" w/2 - 12" leaves

48" x 60" w/2 - 12" leaves  
w/2 additional leaves

48" x 66" w/2 - 12" leaves  
w/2 additional leaves

48" x 72" w/2 - 12" leaves  
w/2 additional leaves

# Island Extension Tops



# Bar Stools



**Kingston Island  
with Bar Stools**



**Bluffton**

**BN101-24**  
17"w 24"h 12"d  
  
**BN102-24**  
(w/Swivel)  
17"w 24"h 12"d



**Cameron**

**CM801-24**  
16"w 24"h 11"d

shown w/ back



**Cordova**

**CD301-24**  
16½"round 24"h  
  
**CD302-24**  
(w/Swivel)  
16½"round 24"h  
  
**CD303-24**  
(w/Swivel & Back)  
18"round 36"h

shown w/ back



**Lamont**

**LM201-24**  
16½"round 24"h  
  
**LM202-24**  
(w/Swivel)  
16½"round 24"h  
  
**LM203-24**  
(w/Swivel & Back)  
18"round 36"h

# Bar Stools



**Liberty**

**LB701-24**  
17"w 24"h 12"d



shown w/ back

**Seafood**

**SD501-24**  
14"w 24"h 14"d

**SD502-24**  
(w/Swivel)  
14"w 24"h 14"d

**SD503-24**  
(w/Swivel & Back)  
16"w 36"h 16"d



shown w/ back

**Venice**

**VN901-24**  
16½"round 24"h

**VN902-24**  
(w/Swivel)  
16½"round 24"h

**VN903-24**  
(w/Swivel & Back)  
18"round 36"h



shown w/ back

**Winfield**

**WN401-24**  
16½"round 24"h

**WN402-24**  
(w/Swivel)  
16½"round 24"h

**WN403-24**  
(w/Swivel & Back)  
18"round 38½"h



# Vanity Collection

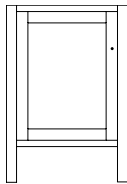


Cabin Creek | Chelsea | Oceanside | Open Shelf | Toekick

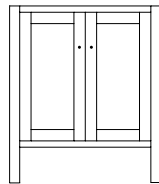
# Cabin Creek Vanity Bases



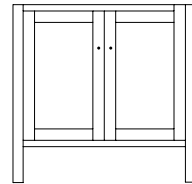
**VCA321-48**



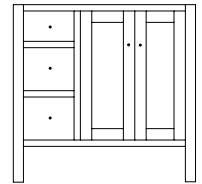
**VCA320-24**  
24"w 35"h 21½"d



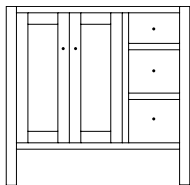
**VCA320-30**  
30"w 35"h 21½"d



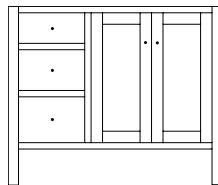
**VCA320-36**  
36"w 35"h 21½"d



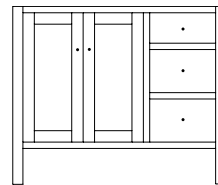
**VCA321-R-36**  
36"w 35"h 21½"d



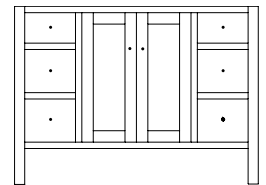
**VCA321-L-36**  
36"w 35"h 21½"d



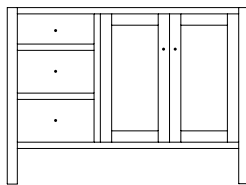
**VCA321-R-42**  
42"w 35"h 21½"d



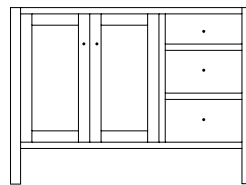
**VCA321-L-42**  
42"w 35"h 21½"d



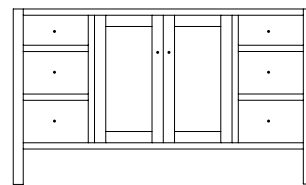
**VCA321-48**  
48"w 35"h 21½"d



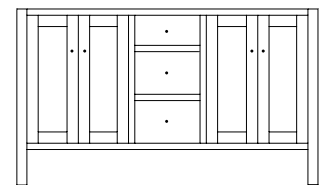
**VCA321-R-48**  
48"w 35"h 21½"d



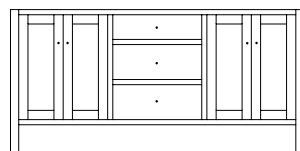
**VCA321-L-48**  
48"w 35"h 21½"d



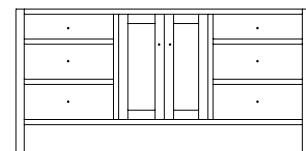
**VCA321-60**  
60"w 35"h 21½"d



**VCA321D-60**  
60"w 35"h 21½"d



**VCA321D-72**  
72"w 35"h 21½"d



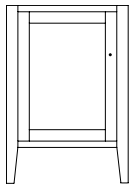
**VCA321-72**  
72"w 35"h 21½"d



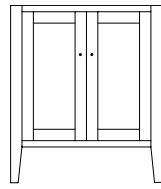
# Chelsea Vanity Bases



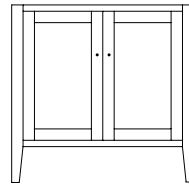
**VCS431D-60**



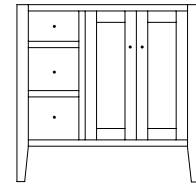
**VCS430-24**  
24"w 35"h 21½"d



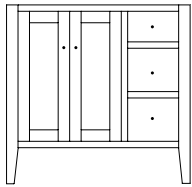
**VCS430-30**  
30"w 35"h 21½"d



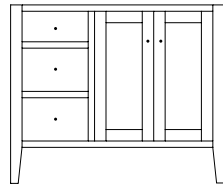
**VCS430-36**  
36"w 35"h 21½"d



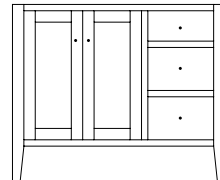
**VCS431-R-36**  
36"w 35"h 21½"d



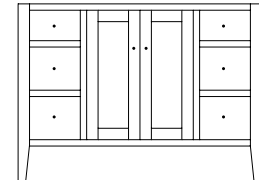
**VCS431-L-36**  
36"w 35"h 21½"d



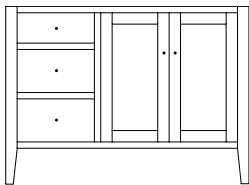
**VCS431-R-42**  
42"w 35"h 21½"d



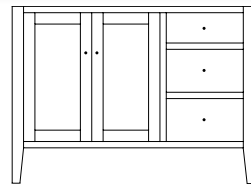
**VCS431-L-42**  
42"w 35"h 21½"d



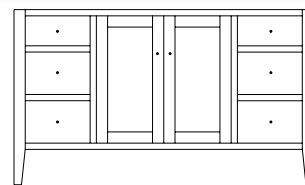
**VCS431-48**  
48"w 35"h 21½"d



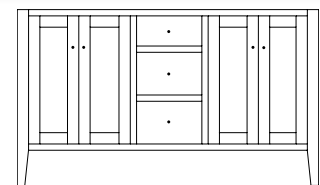
**VCS431-R-48**  
48"w 35"h 21½"d



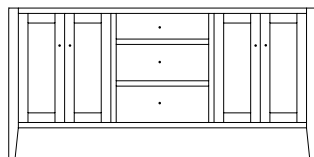
**VCS431-L-48**  
48"w 35"h 21½"d



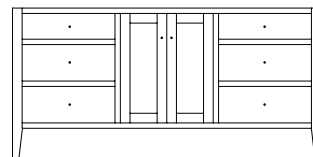
**VCS431-60**  
60"w 35"h 21½"d



**VCS431D-60**  
60"w 35"h 21½"d



**VCS431D-72**  
72"w 35"h 21½"d

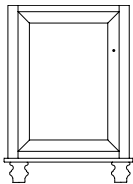


**VCS431-72**  
72"w 35"h 21½"d

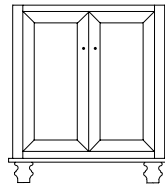
# Oceanside Vanity Bases



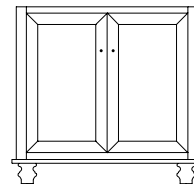
**VOC561-L-36**



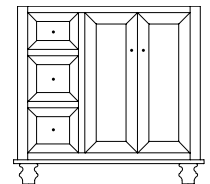
**VOC560-24**  
24"w 35"h 21½"d



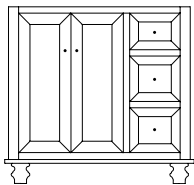
**VOC560-30**  
30"w 35"h 21½"d



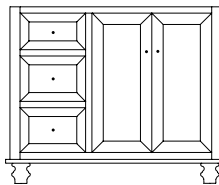
**VOC560-36**  
36"w 35"h 21½"d



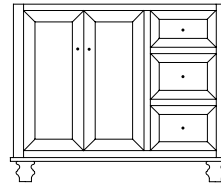
**VOC561-R-36**  
36"w 35"h 21½"d



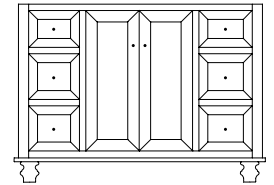
**VOC561-L-36**  
36"w 35"h 21½"d



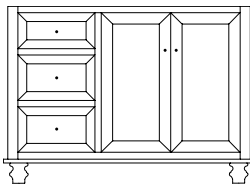
**VOC561-R-42**  
42"w 35"h 21½"d



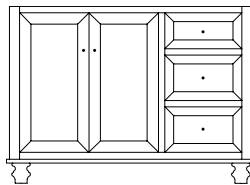
**VOC561-L-42**  
42"w 35"h 21½"d



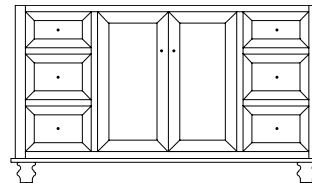
**VOC561-48**  
48"w 35"h 21½"d



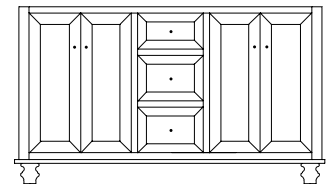
**VOC561-R-48**  
48"w 35"h 21½"d



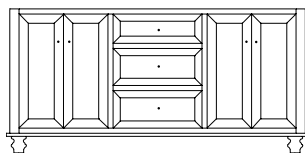
**VOC561-L-48**  
48"w 35"h 21½"d



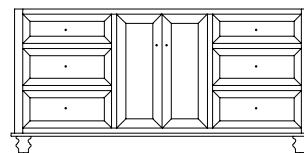
**VOC561-60**  
60"w 35"h 21½"d



**VOC561D-60**  
60"w 35"h 21½"d



**VOC561D-72**  
72"w 35"h 21½"d



**VOC561-72**  
72"w 35"h 21½"d

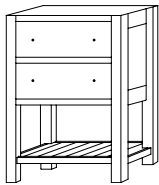
# Open Shelf Vanity Bases



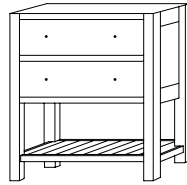
**VOS141-36**



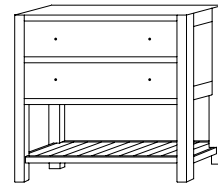
Shown with open Drawers



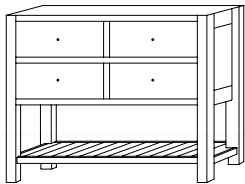
**VOS141-24**  
24"w 35"h 21½"d  
with 1 Drawer



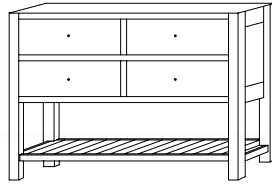
**VOS141-30**  
30"w 35"h 21½"d  
with 1 Drawer



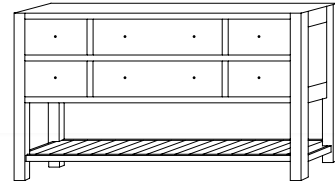
**VOS141-36**  
36"w 35"h 21½"d  
with 2 Drawers



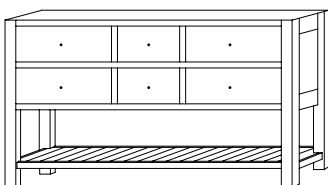
**VOS141-42**  
42"w 35"h 21½"d  
with 2 Doors



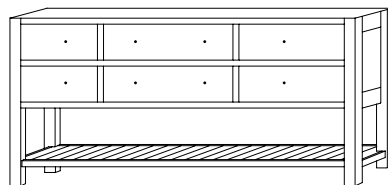
**VOS141-48**  
48"w 35"h 21½"d  
with 2 Doors



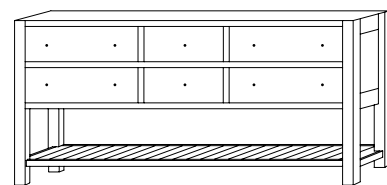
**VOS141-60**  
60"w 35"h 21½"d  
with 4 Drawers, 1 Door



**VOS142-60**  
60"w 35"h 21½"d  
with 2 Drawers, 2 Doors



**VOS141-72**  
72"w 35"h 21½"d  
with 4 Drawers, 1 Door

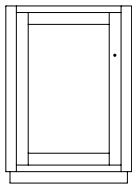


**VOS142-72**  
72"w 35"h 21½"d  
with 2 Drawers, 2 Doors

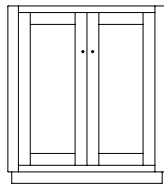
# Loekick Vanity Bases



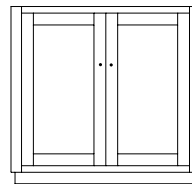
**VTK251-L-48**



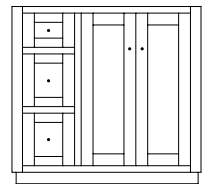
**VTK250-24**  
24"w 35"h 21½"d



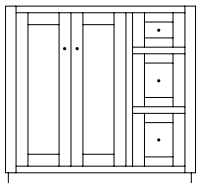
**VTK250-30**  
30"w 35"h 21½"d



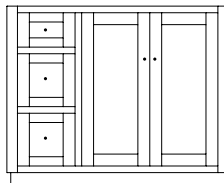
**VTK250-36**  
36"w 35"h 21½"d



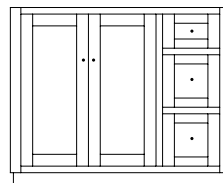
**VTK251-R-36**  
36"w 35"h 21½"d



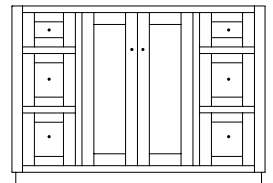
**VTK251-L-36**  
36"w 35"h 21½"d



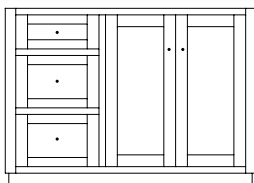
**VTK251-R-42**  
42"w 35"h 21½"d



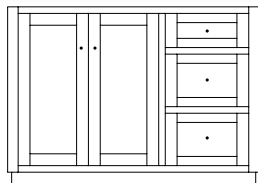
**VTK251-L-42**  
42"w 35"h 21½"d



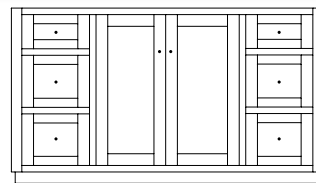
**VTK251-48**  
48"w 35"h 21½"d



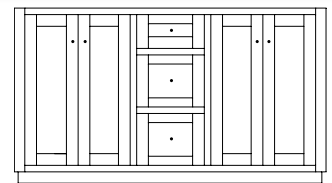
**VTK251-R-48**  
48"w 35"h 21½"d



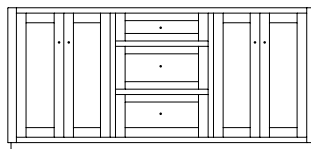
**VTK251-L-48**  
48"w 35"h 21½"d



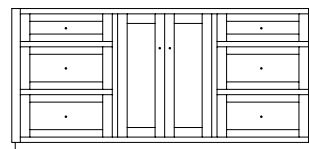
**VTK251-60**  
60"w 35"h 21½"d



**VTK251D-60**  
60"w 35"h 21½"d



**VTK251D-72**  
72"w 35"h 21½"d



**VTK251-72**  
72"w 35"h 21½"d

# Hardware

Hardware choices shown here are available at no additional cost.  
Additional hardware options are available at manufactures list price.



29310-ORB 29310-AS 29310-G10



D925-AC



D924-AC



D529-A



D527-A



K800-SN K802-AE K810-MB



D925-AE



D924-AE



D529-AE



D527-AE



K272-SN K272-BL



D925-BL



D924-BL



D529-B



D527-B



1586-ORB 1586-G10 1586-FB



4425-ORB



4425-G10



4425-BL



4424-ORB



4424-G10



4424-BL



53710 G10 53715 G10



53710 GPH 53715 GPH



K3489-SN



K2017-SN



K558-VB



K3489-MB



K2017-BL



K773-VB



44-4283-191 44-4281-191



53011-ORB



53011-G10



53011-FB



53003-ORB



53003-G10



53003-FB



K117-DACM K117-DBAC



K527-DACM K527-DBAC



174-ORB



174-G10

## Ohio Certified Stains (OCS)

<i>CHERRY</i>	<i>HICKORY</i>	<i>BROWN MAPLE</i>	<i>QU. SAWN WHITE OAK</i>	<i>RED OAK</i>
OCS 100 <i>Natural</i>	OCS 100 <i>Natural</i>	OCS 100 <i>Natural</i>	OCS 100 <i>Natural</i>	OCS 100 <i>Natural</i>
OCS 101 <i>S-2</i>	OCS 101 <i>S-2</i>	OCS 101 <i>S-2</i>	OCS 101 <i>S-2</i>	OCS 101 <i>S-2</i>
OCS 102 <i>Fruitwood</i>	OCS 102 <i>Fruitwood</i>	OCS 102 <i>Fruitwood</i>	OCS 102 <i>Fruitwood</i>	OCS 102 <i>Fruitwood</i>
OCS 103 <i>MX</i>	OCS 103 <i>MX</i>	OCS 103 <i>MX</i>	OCS 103 <i>MX</i>	OCS 103 <i>MX</i>
OCS 104 <i>Seely</i>	OCS 104 <i>Seely</i>	OCS 104 <i>Seely</i>	OCS 104 <i>Seely</i>	OCS 104 <i>Seely</i>
OCS 106 <i>Acres</i>	OCS 106 <i>Acres</i>	OCS 106 <i>Acres</i>	OCS 106 <i>Acres</i>	OCS 106 <i>Acres</i>
OCS 107 <i>Washington</i>	OCS 107 <i>Washington</i>	OCS 107 <i>Washington</i>	OCS 107 <i>Washington</i>	OCS 107 <i>Washington</i>
OCS 110 <i>Medium</i>	OCS 110 <i>Medium</i>	OCS 110 <i>Medium</i>	OCS 110 <i>Medium</i>	OCS 110 <i>Medium</i>
OCS 111 <i>Boston</i>	OCS 111 <i>Boston</i>	OCS 111 <i>Boston</i>	OCS 111 <i>Boston</i>	OCS 111 <i>Boston</i>
OCS 112 <i>Provincial</i>	OCS 112 <i>Provincial</i>	OCS 112 <i>Provincial</i>	OCS 112 <i>Provincial</i>	OCS 112 <i>Provincial</i>
OCS 113 <i>Michael's</i>	OCS 113 <i>Michael's</i>	OCS 113 <i>Michael's</i>	OCS 113 <i>Michael's</i>	OCS 113 <i>Michael's</i>
OCS 116 <i>Harvest</i>	OCS 116 <i>Harvest</i>	OCS 116 <i>Harvest</i>	OCS 116 <i>Harvest</i>	OCS 116 <i>Harvest</i>
OCS 117 <i>Asbury</i>	OCS 117 <i>Asbury</i>	OCS 117 <i>Asbury</i>	OCS 117 <i>Asbury</i>	OCS 117 <i>Asbury</i>
OCS 118 <i>Antique Slate</i>	OCS 118 <i>Antique Slate</i>	OCS 118 <i>Antique Slate</i>	OCS 118 <i>Antique Slate</i>	OCS 118 <i>Antique Slate</i>
OCS 119 <i>Cappuccino</i>	OCS 119 <i>Cappuccino</i>	OCS 119 <i>Cappuccino</i>	OCS 119 <i>Cappuccino</i>	OCS 119 <i>Cappuccino</i>
OCS 121 <i>Smoke</i>	OCS 121 <i>Smoke</i>	OCS 121 <i>Smoke</i>	OCS 121 <i>Smoke</i>	OCS 121 <i>Smoke</i>
OCS 122 <i>Cocoa</i>	OCS 122 <i>Cocoa</i>	OCS 122 <i>Cocoa</i>	OCS 122 <i>Cocoa</i>	OCS 122 <i>Cocoa</i>
OCS 131 <i>Frost</i>	OCS 131 <i>Frost</i>	OCS 131 <i>Frost</i>	OCS 131 <i>Frost</i>	OCS 131 <i>Frost</i>
OCS 132 <i>Sand</i>	OCS 132 <i>Sand</i>	OCS 132 <i>Sand</i>	OCS 132 <i>Sand</i>	OCS 132 <i>Sand</i>
OCS 133 <i>Tundra</i>	OCS 133 <i>Tundra</i>	OCS 133 <i>Tundra</i>	OCS 133 <i>Tundra</i>	OCS 133 <i>Tundra</i>
OCS 134 <i>Argos</i>	OCS 134 <i>Argos</i>	OCS 134 <i>Argos</i>	OCS 134 <i>Argos</i>	OCS 134 <i>Argos</i>
OCS 135 <i>Driftwood</i>	OCS 135 <i>Driftwood</i>	OCS 135 <i>Driftwood</i>	OCS 135 <i>Driftwood</i>	OCS 135 <i>Driftwood</i>
OCS 226 <i>Coffee</i>	OCS 226 <i>Coffee</i>	OCS 226 <i>Coffee</i>	OCS 226 <i>Coffee</i>	OCS 226 <i>Coffee</i>
OCS 227 <i>Rich Cherry</i>	OCS 227 <i>Rich Cherry</i>	OCS 227 <i>Rich Cherry</i>	OCS 227 <i>Rich Cherry</i>	OCS 227 <i>Rich Cherry</i>
OCS 228 <i>Rich Tobacco</i>	OCS 228 <i>Rich Tobacco</i>	OCS 228 <i>Rich Tobacco</i>	OCS 228 <i>Rich Tobacco</i>	OCS 228 <i>Rich Tobacco</i>
OCS 230 <i>Onyx</i>	OCS 230 <i>Onyx</i>	OCS 230 <i>Onyx</i>	OCS 230 <i>Onyx</i>	OCS 230 <i>Onyx</i>

Specialty  
Finishes

