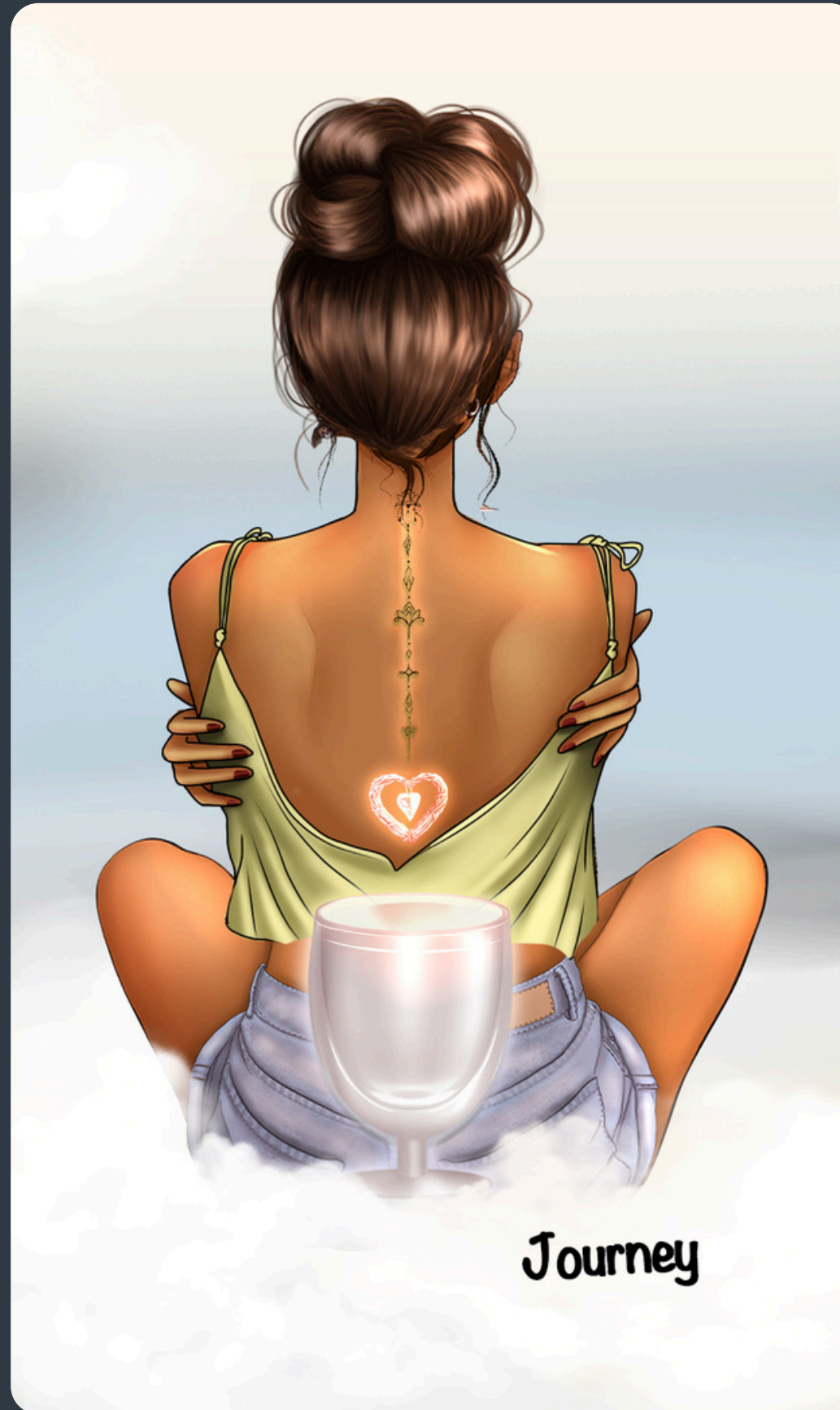


Journey

Journey Tarot Decks



Journey Deck Table of Contents

Journey Freely

This guidebook is your companion for working with the Journey Tarot Deck — a soulful exploration of self, symbolism, and intuitive connection. Inside, you'll find card interpretations, exclusive spreads, and gentle prompts to deepen your practice.

1. [Cover](#)
2. [Table of Contents](#)
3. [Welcome](#) – How to Use This Guide
4. [The Journey Card](#) – A Deck Exclusive
5. [Major Arcana](#)
6. [Minor Arcana](#)
 - [Wands](#) – Inspiration · Energy · Action
 - [Swords](#) – Thought · Clarity · Challenge
 - [Pentacles](#) – Stability · Work · Abundance
 - [Cups](#) – Emotion · Connection · Healing
7. [A Message from Tracy-K to You](#), the Traveler
8. [Blessing Your Journey Deck](#)
9. [Journey Exclusive Tarot Spreads](#)



Journey

Journey Deck - How to Use The Guide

How to Use The Guide

Welcome, Seeker—

You didn't find this deck by accident.

The Journey Tarot is a companion for those standing at the edge of something new—whether it's healing, growth, or rediscovery. Designed to quiet the noise and deepen inner dialogue, this deck holds space for the subtle magic that unfolds when intuition leads.

Let the art pull you in, but let your inner wisdom lead the reading.

What is Journey?

Journey is more than a tarot deck. It is a mirror, a map, and a conversation between your present self and your highest self.

Rooted in the Rider-Waite tradition, the deck features 78 familiar archetypes—but with refreshed symbolism and contemporary artwork that speak directly to the heart. With soft-focus jewel tones and intuitive design, each card invites reflection, insight, and healing.

At the center of this deck is a rare companion: **The Journey Card**—a 79th card that appears when you're at a turning point. It does not offer answers, but presence. It simply whispers, Pay attention here.

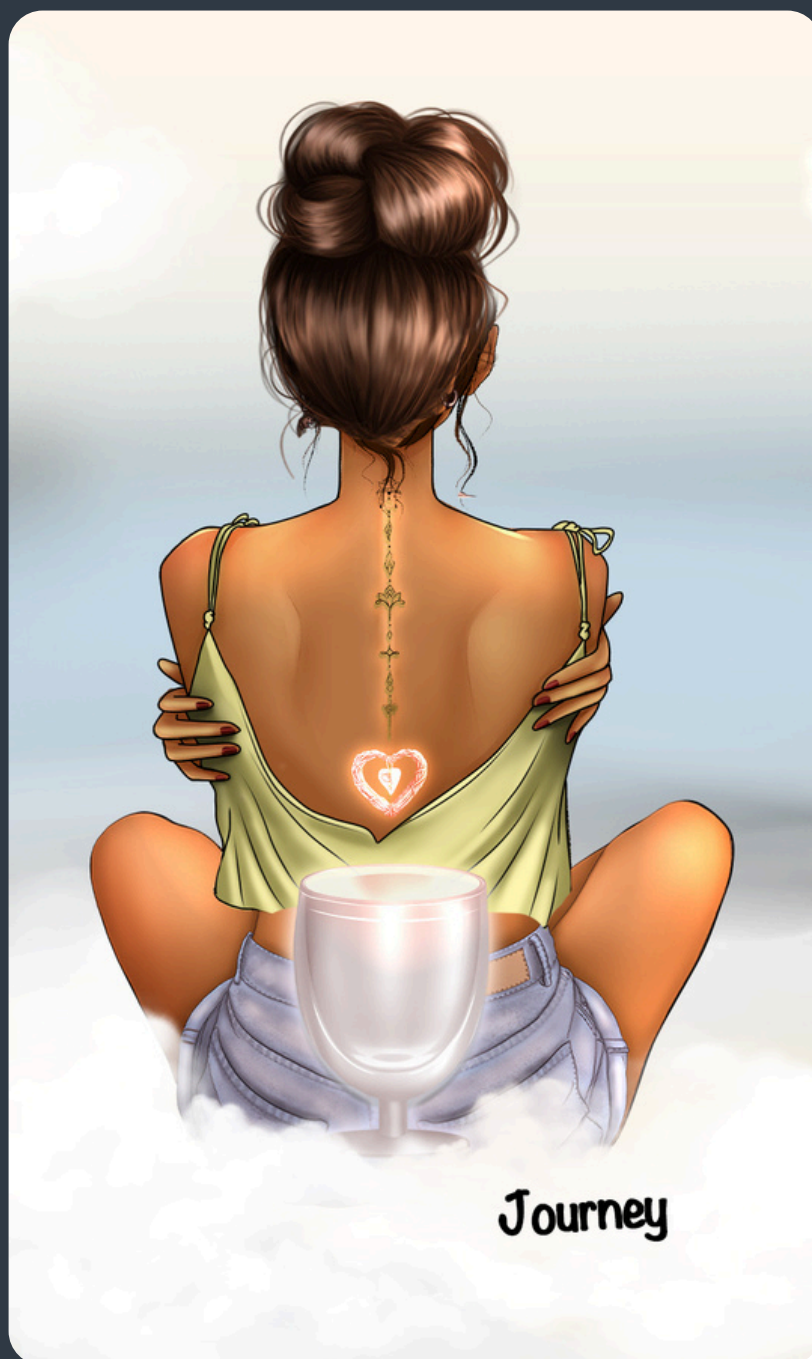
How to Use This Guidebook

This guidebook is designed to be a tool, not a rulebook.

For each card, you'll find:

- A short description and intuitive interpretation
- Keywords to spark reflection
- Gentle journal prompts and ideas for inquiry

You'll also discover suggested spreads, personal rituals, and ways to connect more deeply with your own guidance. Feel free to move through the guide at your own pace. Let your intuition lead the way.



Exclusive Journey Card

The significance and how to use in your reading

Core Significance

The Journey card is the soul of this deck — a luminous threshold between the known and the unfolding. Unlike the traditional arcana, she doesn't prescribe a path but gently invites you to remember that you are already on one. She honors the courage it takes to grow, to question, and to awaken.

When the Journey card appears, it suggests a sacred moment of self-encounter. You may be standing at a crossroads, exiting an old chapter, or entering a new one — emotionally, spiritually, or energetically. She asks: Where is your inner compass pointing? This card reflects transformation not as a destination, but as a lived experience — the kind that arises from within and reshapes everything from the inside out.

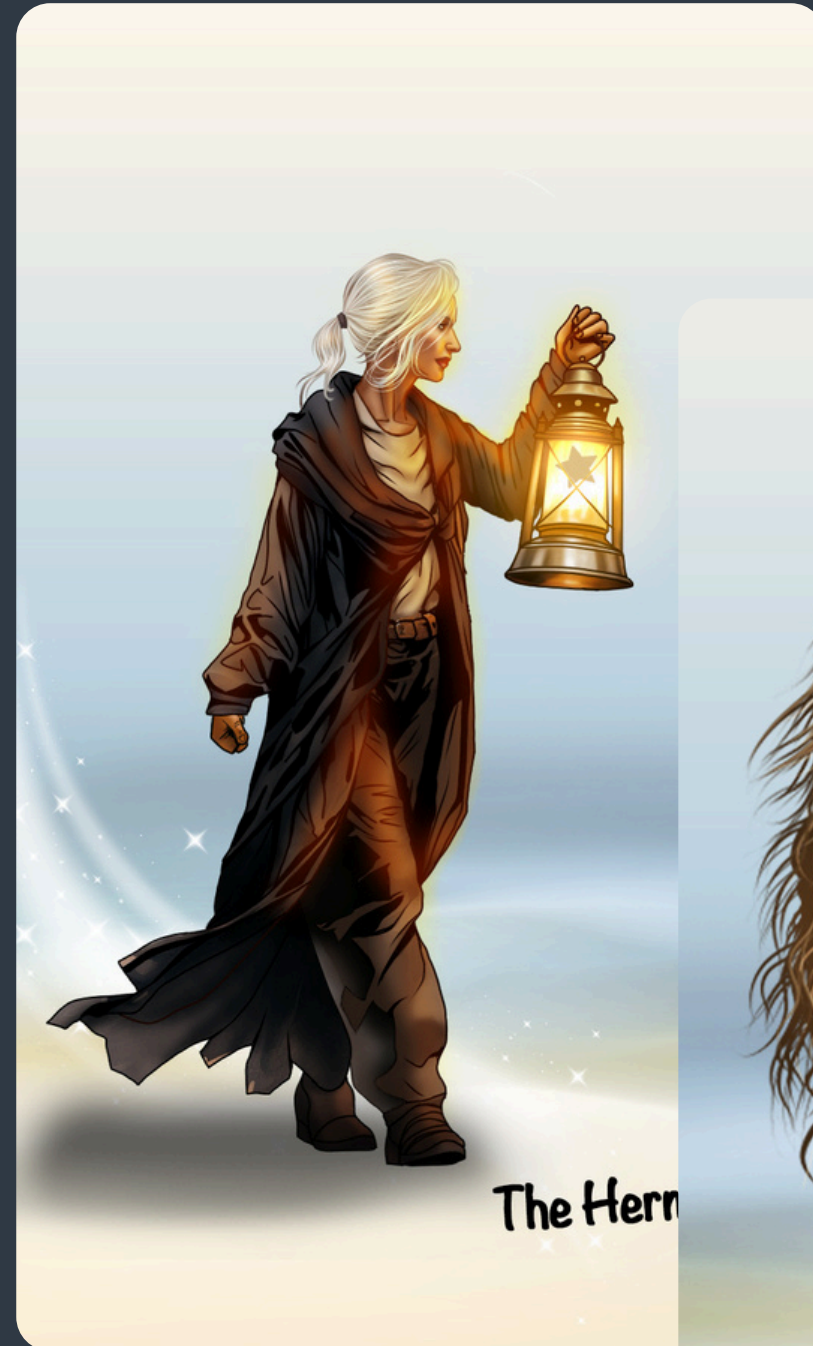
How to Use Her in a Spread

- 1. As a Signifier:** Use the Journey card to represent the querent's current spiritual focus or transformation. Shuffle her into the deck or place her intentionally at the center of the reading as an anchor.
- 2. When She Appears Naturally:** Treat her as a divine spotlight. Whatever cards surround her hold amplified meaning — these are the areas of life calling for reflection, healing, or conscious evolution.
- 3. Standalone Pull:** Use the Journey card as a prompt for journaling or meditation. Ask: What am I being called to examine or embrace at this point in my life? Let her guide a single-card pull that illuminates your next step.
- 4. As a timing card, her message is clear:** This moment matters. She signals the now — a moment so potent, so soul-stirring, it calls for full attention. Use her in spreads when you need confirmation about the when, and she'll point you to the sacredness of the present. Rather than predicting time, she affirms it — anchoring you in the meaningful unfolding of right now.

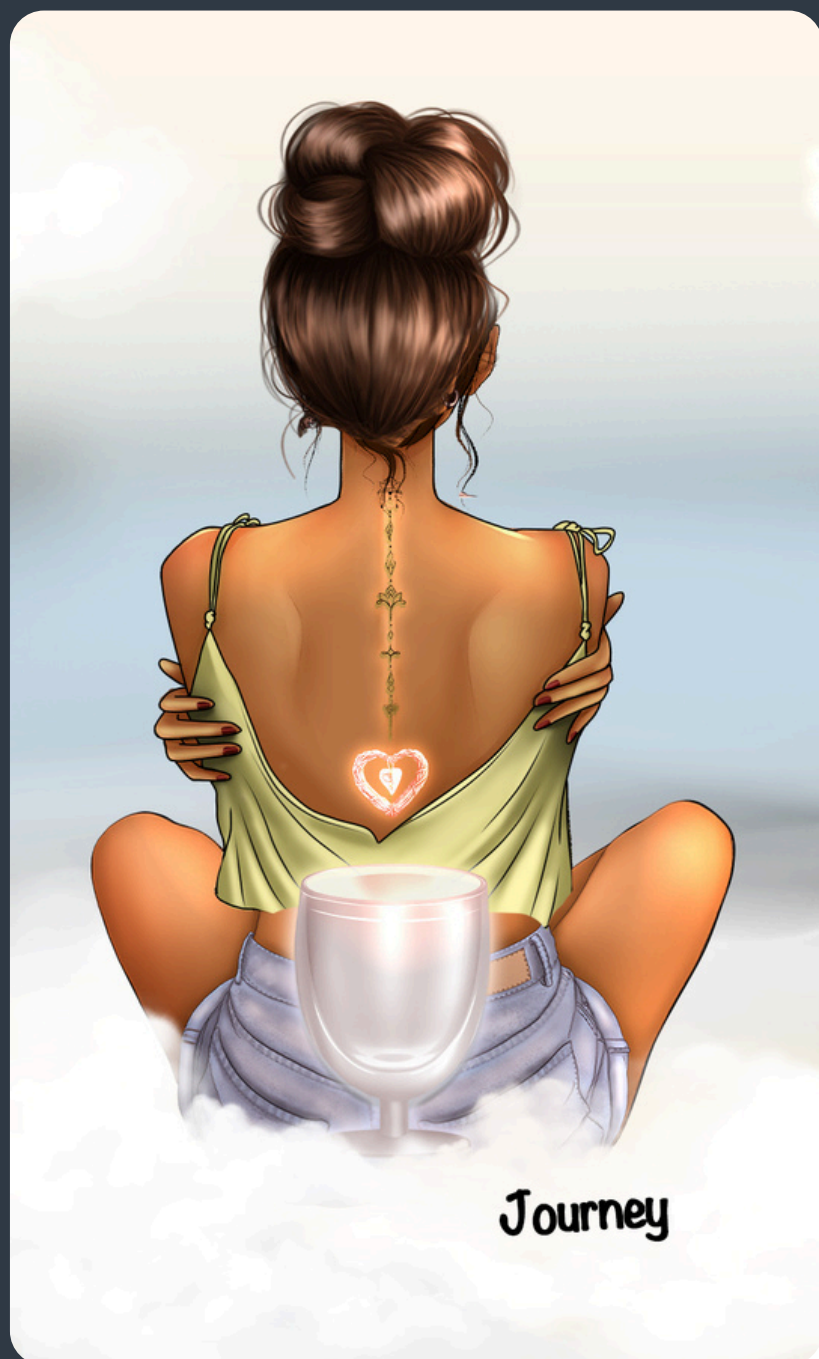
She's a quiet teacher, gently reminding you: This moment matters.

Journey

Major Arcana



Journey



Major Arcana - Journey

Awakening · Inner Knowing · Calling · Self-Remembrance · Soul Alignment · Invitation

Astrological Correspondence

Chiron – The Wounded Healer

Element: Ether 🌌

Core Message

The Journey card appears when your soul whispers, and you're ready to listen. She reminds you that the path isn't linear, but inward. Every step taken — even the faltering ones — has been a part of remembering who you really are. This card is your invitation to return to yourself, gently and fully.

Symbolism

A young woman sits nestled in a soft, cloudlike space, her back turned as she wraps herself in an embrace. A golden pathway of symbols rises up her spine, glowing with quiet power — a map etched into her very being. At her sacrum, a radiant heart with a seed of light pulses like a compass, guiding her from within. In front of her sits a luminous chalice, representing the soul's offering — not something she must earn, but something she already holds. She is at peace in the mystery. She is becoming, unbecoming, and remembering all at once.

Upright Meaning

You are being called into deeper alignment with your true self. This may be a time of spiritual awakening, inner rediscovery, or the quiet unfolding of your next chapter. The Journey card doesn't shout; it beckons. Trust what stirs within you. The path will reveal itself as you take it.

Shadow / Reversed

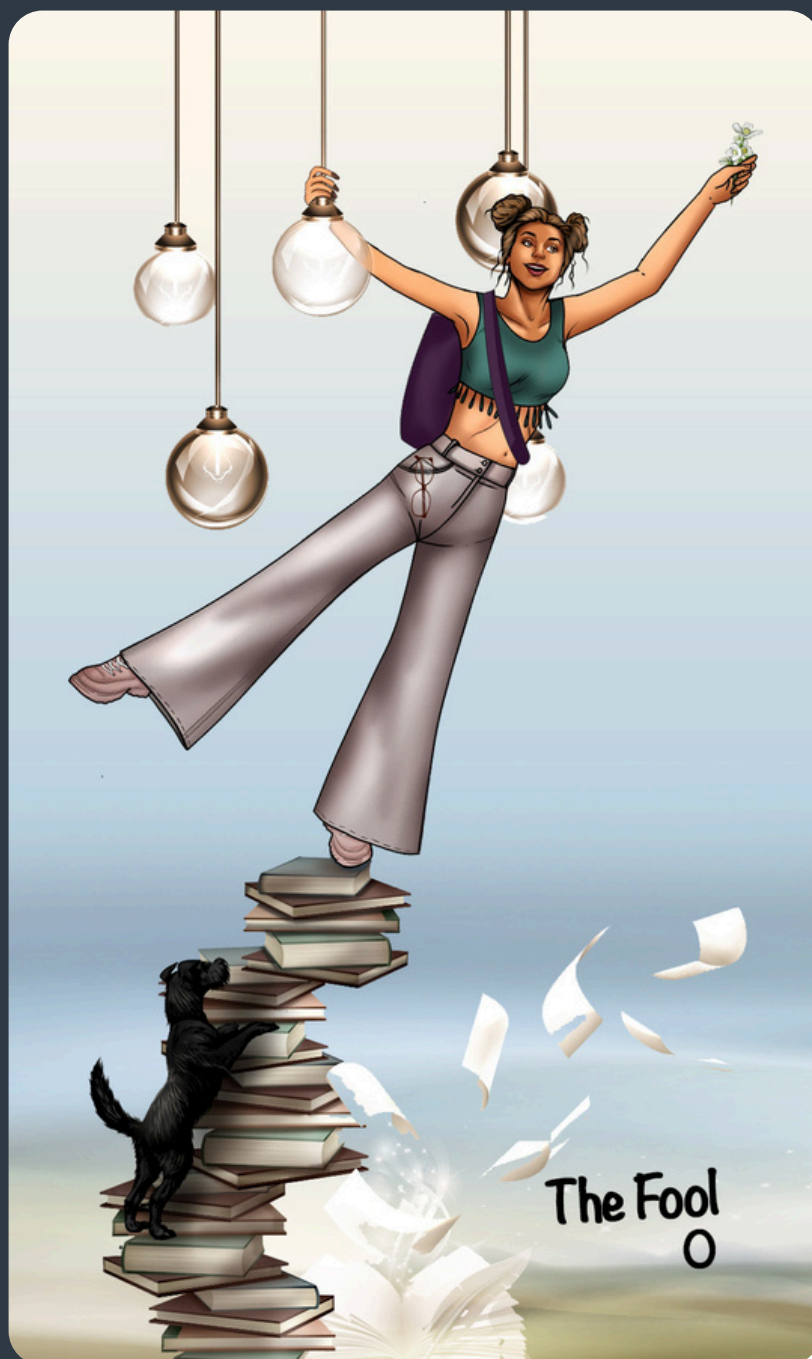
In shadow, this card can reflect resistance to growth, fear of the unknown, or the temptation to bypass the deeper work. You may feel disconnected or unsure — as if the compass has gone quiet. Return to stillness. The way forward will always begin with self-compassion.

Reflection Prompt

What part of me is calling to be remembered — and how can I respond with love?

Affirmation

I am the seeker and the sacred path. I walk in trust, guided by the wisdom within.



Major Arcana - The Fool

New Beginnings · Innocence · Freedom · Trust · Spontaneity

Astrological Correspondence

Uranus ♃

Element: Air ♁

Core Message

Every journey begins with a first step — even if you don't know where it leads. The Fool is the invitation to leap, to trust, and to remember that uncertainty isn't a flaw — it's the fertile soil of possibility.

Symbolism

A carefree young woman balances joyfully atop a wobbling stack of books, reaching toward a glowing bulb and holding a delicate sprig of possibility. Her dog climbs below, a loyal companion through the unknown. Pages fly, lights dangle like stars, and knowledge — while present — is not what steadies her. It's her spirit of wonder. This card captures the breathless beauty of the threshold: where experience hasn't yet shaped the story, and anything is possible.

Upright Meaning

You are standing at the edge of something new. This card invites risk, trust, and the freedom to break from convention. Don't overthink it. Let your intuition — and your heart — lead. There's magic in not knowing yet.

Shadow / Reversed

In shadow, The Fool may signal reckless behavior, avoidance of responsibility, or fear of grounded action. Are you leaping too fast — or refusing to leap at all? Consider what you're avoiding and how you might reconnect with your inner guide.

Reflection Prompt

What would I do if I truly trusted the path ahead — even if I didn't know where it led?

Affirmation

I am free to begin. I walk forward with trust, guided by curiosity and spirit.



Major Arcana - The Magician

Power · Intention · Alignment · Manifestation · Focus

Astrological Correspondence

Mercury ♀ ☿

Element: Air 🌬️

Core Message

The Magician reminds you that you are the bridge between thought and reality. When your heart, mind, and hands work in harmony, real magic happens. This card affirms that you have what you need — it's time to trust and begin.

Symbolism

A confident figure stands grounded, raising a candle lit at both ends. This powerful symbol evokes duality, urgency, and the energy of living fully, even when time feels compressed. His other hand reaches downward, channeling energy between realms. On the table before him rest the four emblems of the suits — cup, pentacle, wand, and sword — showing access to all elements of manifestation. The infinity symbol floats above his head, echoing limitless potential and divine connection. His burgundy cloak and calm expression reflect mastery and quiet conviction. The visual simplicity leaves space for deep reflection — a hallmark of the Journey Deck's soothing aesthetic.

Upright Meaning

This card appears when it's time to step forward with purpose. You are the one who must align your ideas with action. The Magician brings momentum and urges you to act with integrity, clarity, and will. You have access to all elements — now is your moment to create.

Shadow / Reversed

When reversed, the Magician can hint at scattered focus, misused influence, or self-doubt. Be mindful of manipulation, either by you or others. This may also be a sign to pause and clarify your intent before proceeding. Are you aligned with your higher self — or are you grasping at control?

Reflection Prompt

What am I ready to bring into form — and what energy, tools, or clarity do I need to support it?

Affirmation

I gather my energy with purpose and create from a place of wisdom and truth.



Major Arcana - The High Priestess

Inner knowing · Mystery · Intuition · Sacred stillness · Hidden truths

Astrological Correspondence

Moon 🌙

Element: Water 💧

Core Message

The answers you seek lie within. The High Priestess invites you to pause and listen — not to the noise around you, but to the subtle whispers of your soul. This card is a gateway to inner wisdom and the unseen layers of your experience.

Symbolism

Seated atop clouds in meditative stillness, the High Priestess emanates serenity and presence. Her tattoos reflect sacred geometry and spiritual symbolism, mapping the path of embodied wisdom. A radiant halo of energy encircles her crown, suggesting active connection with divine or cosmic intelligence. The lotus petals floating around her symbolize purity and the unfolding of awareness. She holds no book, no key — only stillness, suggesting the truth cannot be taught, only remembered.

Upright Meaning

This card signals a time to trust your intuition over external validation. Dreams, synchronicities, or gut feelings may be trying to guide you. You're being called inward — to contemplate, observe, and access deeper truths.

Shadow / Reversed

When reversed, the High Priestess may point to avoidance, disconnection from your intuition, or over-reliance on logic. You may be suppressing inner wisdom out of fear, distraction, or doubt. Reclaim silence and turn inward.

Reflection Prompt

What truths are already alive within me — and how can I honor them more deeply?

Affirmation

I trust the quiet voice within me. I honor the wisdom that speaks in stillness.



Major Arcana - The Empress

Nurturing · Creation · Fertility · Abundance · Sensuality · Motherhood · Earth wisdom

Astrological Correspondence

Venus ♀

Element: Earth ♁

Core Message

The Empress reminds us that creativity is an act of love. Whether you're nurturing a project, a relationship, or yourself, this card invites you to anchor into the fertile ground of your own being — and let growth unfold in its own time.

Symbolism

A serene, pregnant figure stands gently cradling her belly, the embryo inside stylized as a curled fern, signaling potential and life's sacred spiral. She is surrounded by golden wheat — a symbol of harvest and nourishment — and accompanied by a young deer, embodying innocence, gentleness, and new beginnings. The Empress wears a crown that subtly blends into nature, suggesting a harmony between sovereignty and the natural world. Everything about her posture and presence speaks of protection, care, and connection to life's cycles.

Upright Meaning

The Empress is a call to connect with your divine creative nature. This might show up as literal fertility, but often points to birth in a broader sense: new ideas, ventures, or emotional flourishing. It's a good time to tend to your environment, honor your body, and offer yourself (and others) compassion.

Shadow / Reversed

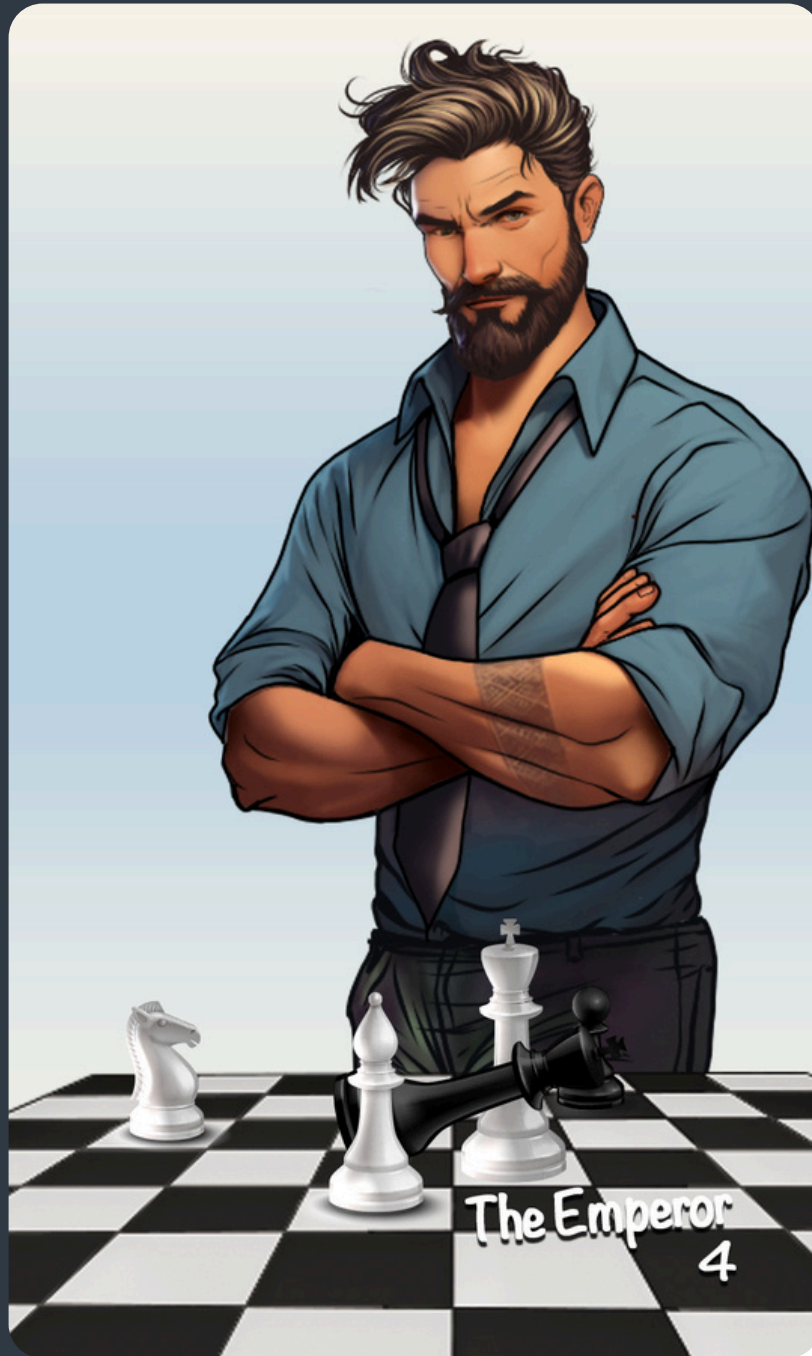
In reversal, The Empress may suggest emotional depletion, neglect of self-care, or creative blocks. It can also highlight over-giving or smothering tendencies. Rebalancing your giving and receiving — especially within yourself — is key.

Reflection Prompt

What am I being called to nurture in my life right now — and how can I do so with love and patience?

Affirmation

I honor the rhythms of life within me. I create and nurture with love.



Major Arcana - The Emperor

Structure · Authority · Boundaries · Leadership · Strategy · Discipline · Foundation

Astrological Correspondence

Aries ♈

Element: Fire 🔥

Core Message

The Emperor teaches that healthy power stems from alignment, not domination. When inner strength is channeled with wisdom and care, it creates safety and order — not only for oneself but for others, too.

Symbolism

A confident, composed man stands with arms folded over a chessboard, where white pieces have just checkmated black — a nod to strategy, foresight, and control. His sleeves are rolled up, suggesting he's both a thinker and a doer. His tattoo — geometric and symmetrical — hints at ancient wisdom and sacred order. Though stern, there's no harshness in his gaze, only certainty. He embodies grounded leadership — the kind that builds rather than breaks. The clear space behind him suggests clarity and decisiveness.

Upright Meaning

This card invites you to step into a role of leadership or to create more structure in your life. Discipline, clear boundaries, and long-term thinking are your allies right now. The Emperor supports action grounded in integrity — the kind of authority that protects rather than controls.

Shadow / Reversed

In shadow, The Emperor may reflect rigidity, control issues, or fear of vulnerability. It can also point to resistance to authority — external or internal. Where might you be overcompensating for past instability? Loosen your grip without losing your ground.

Reflection Prompt

Where in my life do I need more structure — and how can I create it in a way that supports, not stifles, my growth?

Affirmation

I lead my life with clarity, strength, and purpose. I am the foundation I can trust.



Major Arcana - The Hierophant

Wisdom · Tradition · Mentorship · Belief Systems · Inner Guidance · Spiritual Study · Transmission

Astrological Correspondence

Taurus ♉

Element: Earth ♁

Core Message

True wisdom is not rigid — it lives, breathes, and evolves. The Hierophant invites you to reconnect with what holds meaning for you — not just what you've been told, but what resonates in your bones.

Symbolism

A serene guide sits cross-legged, gently offering a radiant star anise — a humble yet powerful spice rich with cultural and healing significance. At his feet lie scattered roots and herbs — each representing pathways of embodied wisdom passed down through time. Two children sit attentively before him, suggesting that true learning arises from open-hearted presence. His OM-embellished shirt speaks to spiritual integration rather than separation — a teacher who walks the path as much as he teaches it. The overall tone is earthy, approachable, and reverent, reminding us that sacred teachings are not distant — they are steeped in the everyday.

Upright Meaning

This card invites you to explore systems of belief, study, or mentorship that align with your growth. It may be time to return to ritual or tradition — or reimagine them through your own lens. Consider who your teachers are — and what kind of teacher you are becoming.

Shadow / Reversed

When reversed, The Hierophant may signal dogma, rebellion, or spiritual disconnection. Are you clinging to outdated beliefs or resisting all structures out of fear? This card urges you to find your own truth — not just reject or inherit someone else's.

Reflection Prompt

What wisdom or teachings truly support my growth — and which no longer serve the path I'm on?

Affirmation

I honor the wisdom that feels true to me — and I trust myself to evolve with it.



Major Arcana - The Lovers

Love · Union · Heart-Centered Choice · Sacred Mirror · Emotional Honesty · Soul Contract · Partnership

Astrological Correspondence

Gemini

Element: Air 🌬️

Core Message

Love, when rooted in truth, becomes a sacred mirror. This card speaks to the power of aligned connection — with another, with yourself, or with a path that feels destined.

Symbolism

A couple stands forehead to forehead, their bodies drawn into one another in a moment of vulnerability and trust. There is no distraction, only the quiet intensity of presence. Their embrace isn't just romantic — it's soulful, signaling a deeper union that transcends surface attraction. The soft, natural backdrop suggests both grounding and openness, echoing the idea that love — in all its forms — thrives when both freedom and commitment coexist. The simplicity of the scene lets the emotional resonance take center stage: this is a card of choice, devotion, and honest alignment.

Upright Meaning

The Lovers invites you to explore what it means to choose with your whole heart. A meaningful relationship may be taking root, or a decision is calling you to honor your inner truth. This card affirms that the path ahead is not just about logic, but about what feels soulfully right. Trust your knowing, and let love — in its broadest sense — guide you.

Shadow / Reversed

In its shadow, The Lovers may reveal imbalance, misalignment, or the tendency to lose yourself in others. It might also point to avoidance when faced with hard choices or emotional truth. Where have you compromised too much — or held back out of fear?

Reflection Prompt

What part of me am I ready to meet more fully — and how will that change the way I love?

Affirmation

I choose love that honors who I am and who I'm becoming.



Major Arcana - The Chariot

Willpower · Determination · Discipline · Momentum · Control · Direction · Victory · Self-Mastery

Astrological Correspondence

Cancer ♋

Element: Water 💧

Core Message

Success arises when intention meets disciplined action. The Chariot reminds you that you're capable of navigating any terrain when you harness your focus, courage, and drive. Stay true to your path — even when the road curves unexpectedly.

Symbolism

A confident young woman skateboards powerfully forward, sunglasses gleaming, hair whipping in the wind. She holds taut reins connected to two dynamic horses — one black, one white — representing opposing forces or dual impulses. Her ballcap bears a stylized sun, symbolizing clarity and personal power. Though unconventional, her chariot (a skateboard) moves with grace and determination, carving a path of light. This modern twist on the classic card speaks to inner mastery, adaptability, and the choice to ride life's momentum with conscious intent.

Upright Meaning

You're being called to channel your energy with focus. Whether it's a goal, a relationship, or a life direction, momentum is building — but it's up to you to steer. This card signals a time to take the reins, assert your will, and move with purpose. Stay grounded in your values while making bold progress.

Shadow / Reversed

In reverse, The Chariot may suggest a lack of control, scattered intentions, or inner conflict. You might feel pulled in multiple directions or struggling to assert yourself. Slow down, realign, and ask: What am I moving toward, and who's really driving?

Reflection Prompt

Where am I ready to reclaim direction in my life — and how can I ride forward with confidence and grace?

Affirmation

I steer my life with clarity and courage. I trust the path I'm creating.



Major Arcana - Strength

Courage · Compassion · Inner Power · Patience · Resilience · Grace · Self-Mastery · Emotional Fortitude

Astrological Correspondence

Leo ♌

Element: Fire 🔥

Core Message

True strength is quiet, steady, and rooted in love. This card reminds us that gentleness can tame even the fiercest of forces — including the ones within ourselves.

Symbolism

A young woman sits peacefully against the great body of a lion. She cups his head gently in her hands, pressing a soft kiss to his brow. A gold chain — shaped into an infinity symbol — loops loosely around both of them, symbolizing the eternal bond between instinct and compassion. The lion, regal and wild, rests his full weight against her, entirely at ease in her presence. This profound trust illustrates the strength born of presence, not dominance. Her winter clothing adds a touch of softness and vulnerability, reinforcing that warmth and tenderness can quiet even the fiercest roar.

Upright Meaning

You are being invited to embody calm power. Whether facing inner doubts or external challenges, you have what it takes — not through control, but through heart-centered resilience. Trust in your ability to influence through presence, not pressure.

Shadow / Reversed

When reversed, Strength may point to insecurity, impatience, or attempts to control out of fear. It asks: Where am I pushing instead of listening? Reconnect with your heart and remember — softness is not weakness.

Reflection Prompt

Where in my life can I practice gentler strength — and what might soften if I approached it with more compassion?

Affirmation

My strength flows from within. I lead with love, and I am powerful in my calm.



Major Arcana - The Hermit

Solitude · Inner Wisdom · Introspection · Guidance · Stillness · Search for Truth · Illumination

Astrological Correspondence

Virgo ♍

Element: Earth 🌍

Core Message

The answers you seek are not out there — they're within. The Hermit invites you to step back, turn down the noise, and follow the quiet glow of your inner lantern.

Symbolism

An older woman walks forward, wrapped in dark, flowing robes. Her silver hair is pulled back, her expression calm and resolute. In her hand, she holds a lantern lit with a warm star-shaped flame — a beacon not just for herself, but perhaps for others who follow behind. The path around her sparkles faintly, suggesting this is a spiritual journey more than a physical one. Her solitary presence and steady movement reflect a moment of deep introspection, when wisdom is gathered not from action, but from presence and perspective.

Upright Meaning

The Hermit appears when it's time to retreat from the noise of daily life and reconnect with your inner truth. You may be in a phase of soul-searching, study, or quiet transformation. This card encourages patience — allow space for clarity to emerge in its own time.

Shadow / Reversed

In reversal, The Hermit warns against isolation, avoidance, or spiritual bypassing. Are you withdrawing out of wisdom — or fear? Don't lose yourself in solitude; the light you carry is meant to serve, not just to shield.

Reflection Prompt

Where in my life do I need space to think clearly — and how can I create it?

Affirmation

I trust the quiet. I follow my inner light, knowing the journey will lead me home.



Major Arcana - The Wheel of Fortune

Cycles · Change · Destiny · Turning Point · Synchronicity · Karma · Opportunity · Divine Timing · Luck

Astrological Correspondence

Jupiter ♃

Element: Fire 🔥

Core Message

Life is always in motion. The Wheel of Fortune reminds us that nothing is permanent — fortune turns, patterns shift, and our job is to stay present through it all.

Symbolism

A golden ship's wheel rises from the sand, steady yet weathered, with a vibrant compass star at its center. Behind it, ocean waves roll in endlessly — a visual rhythm of change and continuity. Seagrass and flowers bloom around the base, symbolizing adaptation and the natural flow of life cycles. This image captures the sacred dance between fate and free will, between surrender and steering.

Upright Meaning

This card marks a significant shift — a moment when something larger than you is at play. It can signify luck, alignment, or an unexpected opportunity. Trust the flow. Even if you can't control what's happening, you can choose how to meet it.

Shadow / Reversed

Reversed, the Wheel may reflect resistance to change, clinging to what was, or feeling stuck in a loop. Ask yourself: Am I trying to control what's beyond my influence? Realignment begins with acceptance.

Reflection Prompt

Where in my life is the wheel turning — and how can I ride the wave instead of resisting the tide?

Affirmation

I trust the rhythm of life. I remain centered as the wheel turns.



Major Arcana - Justice

Truth · Fairness · Accountability · Consequences · Integrity · Objectivity · Decisions · Law · Balance

Astrological Correspondence

Libra ♎

Element: Air 🌬️

Core Message

Justice speaks to the deeper laws that govern cause and effect. This card asks us to pause, reflect, and take responsibility — not only for our actions, but for the truth we choose to live by.

Symbolism

A blindfolded figure walks a fine black line — a symbol of balance and discernment — holding both the sword of truth and the scales of justice. Her dress is light, but her boots mismatched, reminding us that harmony is rarely perfect and truth often complex. Behind her, contrasting black and white feathers echo duality: light and shadow, intention and impact. The tension between these forces guides her, not away from truth, but directly into it.

Upright Meaning

When Justice appears, it's time to examine what's fair — within you and around you. This may involve legal matters, important decisions, or moral crossroads. Truth may not be comfortable, but it is clarifying. Stand in it bravely.

Shadow / Reversed

Reversed, this card warns of bias, dishonesty, or imbalance. It may reflect a refusal to take accountability or a system out of alignment. How can you restore fairness — starting with your own integrity?

Reflection Prompt

Where am I being invited to face the truth, and what might balance look like from a higher perspective?

Affirmation

I walk in truth. I accept the consequences of my choices with grace and integrity.



Major Arcana - The Hanged Man

Surrender · Pause · Perspective · Transition · Sacrifice · Suspension · Inner Illumination · Release

Astrological Correspondence

Neptune ♆

Element: Water 💧

Core Message

The Hanged Man asks you to trust the power of the pause. Sometimes the most profound shifts occur when we let go of control and allow life to move through us.

Symbolism

A young man hangs serenely upside down from a tree, his body relaxed, his hands gently woven in stillness. A subtle halo of light radiates from his head — not from effort, but surrender. His inversion is not punishment, but perspective: a sacred pause that invites inner transformation. The winding vines and tranquil horizon reflect a natural, unfolding rhythm — the wisdom that can only be found by slowing down and seeing differently.

Upright Meaning

This card encourages voluntary stillness. Something in your life may require release, patience, or a complete reframe. Allowing what is — rather than resisting — is the first step toward breakthrough.

Shadow / Reversed

Reversed, The Hanged Man can signal forced stalling, indecision, or martyrdom. Are you holding yourself in limbo out of fear? The power to shift lies not in action, but in how you see.

Reflection Prompt

What would it look like to pause, surrender, and trust that clarity will come — even if it hasn't yet?

Affirmation

I welcome the stillness. I release control and allow a new perspective to find me.



Major Arcana - Death

Endings · Transformation · Release · Rebirth · Letting Go · Cycles · Surrender · Renewal · Growth

Astrological Correspondence

Scorpio ♏

Element: Water 💧

Core Message

True transformation begins with release. Death is not an end, but an invitation to shed the old so the new can take root. Trust the sacred rhythm of becoming.

Symbolism

A serene woman melds into a tree stump, her elegant figure woven with vines and bark — half-human, half-nature. Her posture is meditative, peaceful, rooted in the quiet wisdom of change. Green butterflies flutter at her base, signaling the transformation that follows surrender. Falling leaves and bare branches overhead suggest the natural death of what no longer serves. She is both stillness and metamorphosis — grounded in the truth that endings are fertile beginnings.

Upright Meaning

The Death card signals a powerful transition. Something in your life — a belief, relationship, habit, or phase — is ready to be released. This card invites you to face that truth with courage and trust in what comes after. Clinging slows growth; surrender unlocks rebirth.

Shadow / Reversed

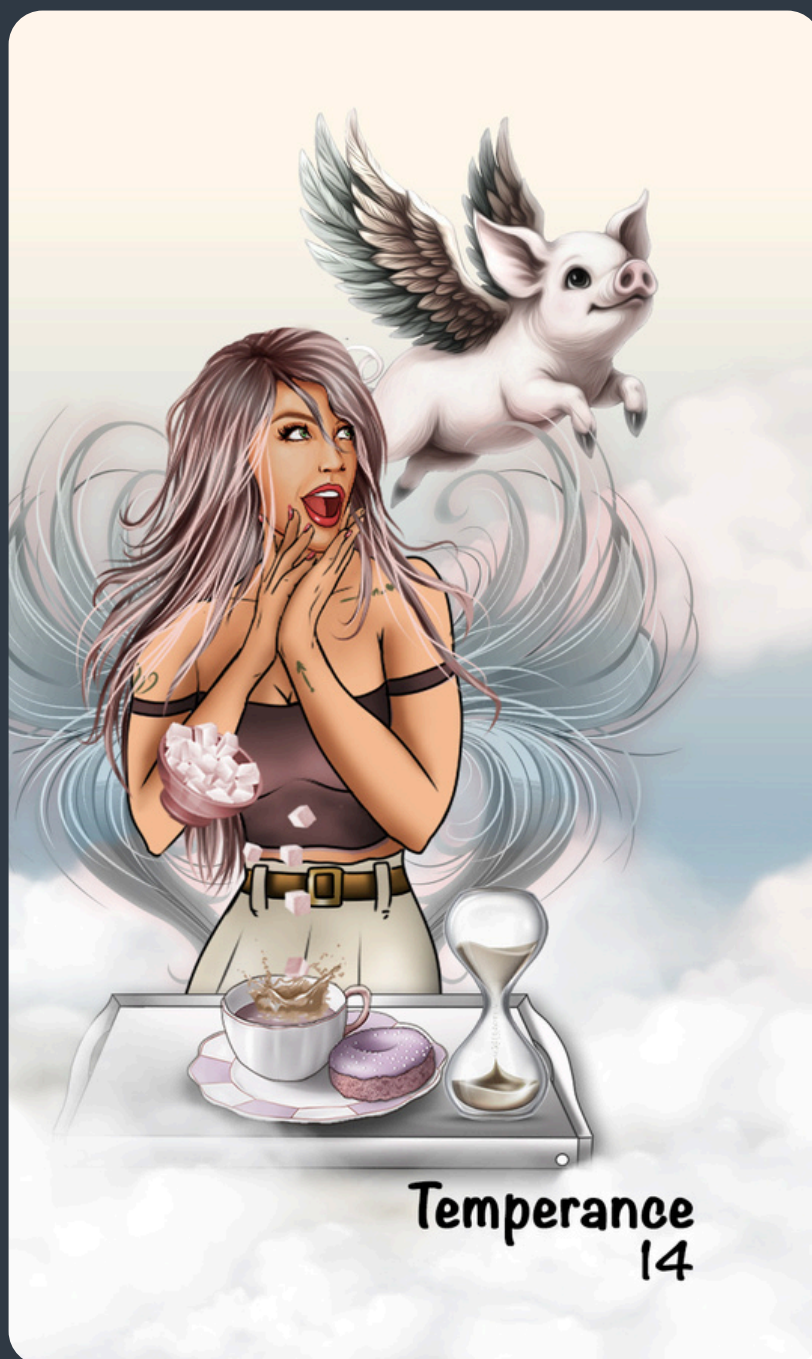
In shadow, Death may represent resistance to change, fear of loss, or denial of an inevitable shift. If you feel stuck or in mourning, be gentle with yourself — but know that letting go is a powerful act of love and liberation.

Reflection Prompt

What am I ready to release — not just in theory, but in truth — so I can make space for something new?

Affirmation

I honor the endings in my life as sacred gateways to new beginnings.



Major Arcana - Temperance

Balance · Harmony · Moderation · Integration · Timing · Alchemy · Patience · Grace

Astrological Correspondence

Sagittarius ♐

Element: Fire 🔥

Core Message

Grace emerges in the space between extremes. Temperance invites you to blend, adjust, and trust that all things are coming together — in time and in right proportion.

Symbolism

A serene angel stands in the clouds, blending the bitter with the sweet — coffee and sugar — embodying the alchemical power of balance. A winged pig soars overhead, a playful nod to miracles and the phrase “when pigs fly.” Here, it signals that what once felt impossible may now be taking flight — but only in divine timing. On the tray below, a delicate arrangement of tea, sweets, and an hourglass evoke harmony, presence, and grace. Her swirling hair and ethereal surroundings suggest that moderation is not about restriction, but sacred integration.

Upright Meaning

Temperance appears when life is asking for grace, patience, or moderation. Instead of reacting, blend what you’ve learned. Combine opposites. Soothe extremes. Trust the process — what feels chaotic now may be alchemizing into something unexpectedly beautiful.

Shadow / Reversed

In shadow, this card may suggest imbalance, impatience, or overindulgence. You may be trying too hard to control outcomes or skipping steps in a rush to resolution. Come back to center. Adjust gently.

Reflection Prompt

Where can I soften extremes and move with more trust in timing?

Affirmation

I blend all parts of myself with grace and allow the rhythm of life to guide me.



Major Arcana - The Devil

Temptation · Illusion · Power · Obsession · Control · Desire · Liberation

Astrological Correspondence

Capricorn

Element: Earth 🌍

Core Message

The Devil card reflects the places we give our power away. It doesn't accuse — it reveals. What feels inescapable might simply be a story you're still telling yourself. This card invites you to see beyond the veil and reclaim your choice.

Symbolism

A magnetic figure sits calmly, exuding control and charm. In his hands, he cradles a pulsing heart wrapped in sinewy threads — the seat of manipulation and desire. Suspended below are two figures, limbs slack, their strings leading directly from the heart in his grasp. The dual figures speak to shared illusions: entanglements where both parties are caught in a web of projection or mutual dependency. Twisting antlers and shadowed skulls add to the scene's tension — a reminder that allure often hides consequence. Yet the figures are not bound — their strings could be cut at any time.

Upright Meaning

The Devil shows up when something has too much hold over you — a fixation, a person, a belief, or even a craving. There's nothing wrong with desire, but when it becomes your master, it blocks your freedom. Awareness is the first act of liberation.

Shadow / Reversed

When reversed, this card suggests the beginning of detachment from toxic patterns or dynamics. You're waking up from the trance. The illusion may still whisper, but it no longer commands you.

Reflection Prompt

Where in my life am I playing a role instead of acting from truth?

Affirmation

I release what no longer serves and return to myself — whole and free.



Major Arcana - The Tower

Revelation · Upheaval · Breakdown · Awakening · Liberation · Shock · Truth

Astrological Correspondence

Mars

Element: Fire 🔥

Core Message

The Tower brings the lightning strike that clears the sky. It doesn't ask for permission — it arrives when illusions can no longer hold. Though uncomfortable, this card heralds necessary awakening and the start of authentic freedom.

Symbolism

A hollow tree stands mid-flame, struck by lightning — a natural tower brought low by elemental force. Smoke billows at its base while a single bird takes flight from the broken top, escaping the chaos below. The tree, once strong and rooted, now reveals its fragile core. Its fall is not random; it is catalytic — a flashpoint in the seeker's journey. The bird symbolizes the soul's capacity to rise, even from devastation. Cracked stones and wildflowers nearby hint at the raw beauty of growth after destruction.

Upright Meaning

This card arrives when structures you've relied on — beliefs, roles, relationships — are no longer sustainable. It can feel sudden, even harsh. But at its heart, The Tower clears what blocks your truth. Let it fall. What remains will be real.

Shadow / Reversed

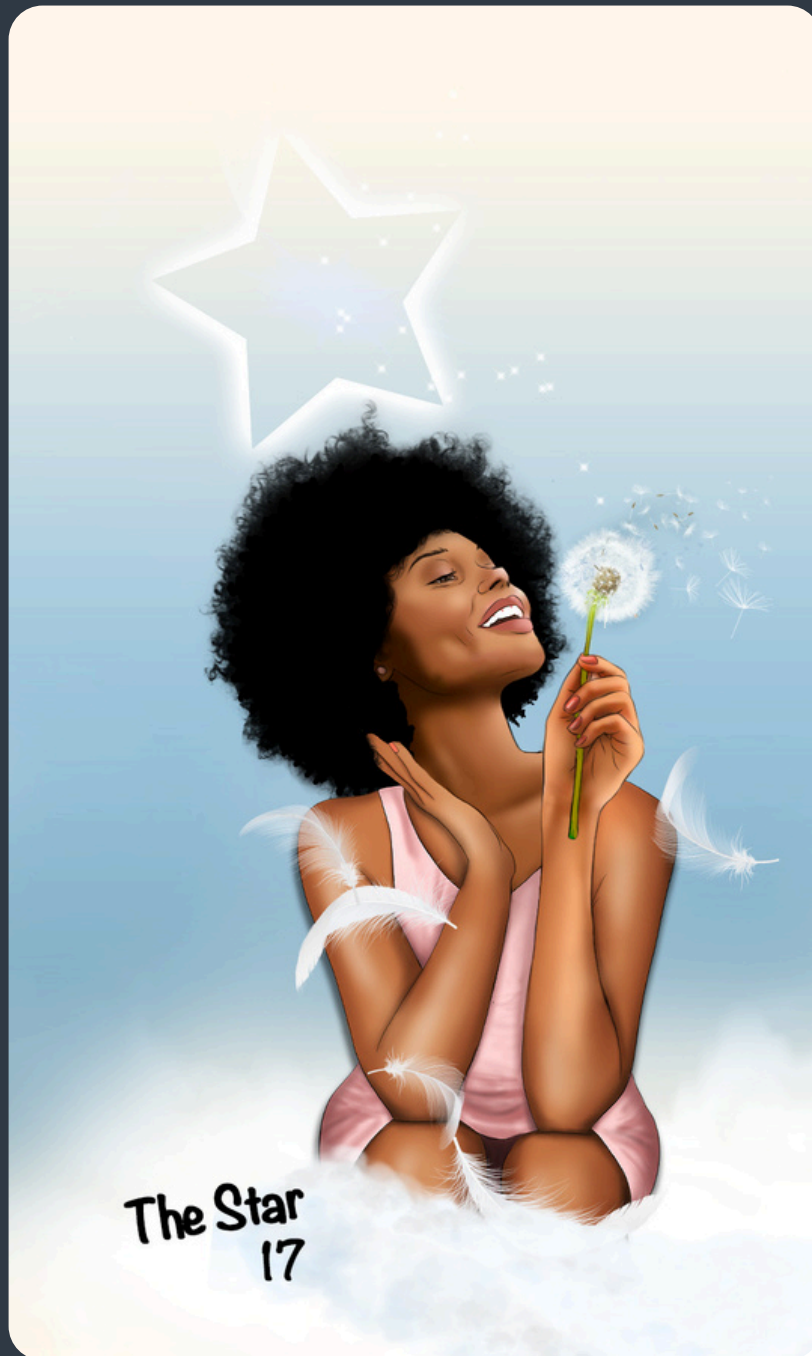
Reversed, this card can signal resistance to change or a slow unraveling. The discomfort may linger longer than necessary. Trust the breakdown — it's clearing space for something more aligned.

Reflection Prompt

What truth have I been avoiding, and what becomes possible when I finally face it?

Affirmation

Even in the storm, I trust what is breaking is making space for what I truly need.



Major Arcana - The Star

Hope · Renewal · Healing · Inspiration · Serenity · Faith · Lightness

Astrological Correspondence

Aquarius

Element: Air 🌬️

Core Message

After upheaval, The Star gently returns you to yourself. It reminds you that healing is possible — not all at once, but with grace and time. This card whispers of hope, joy, and the quiet magic that lives in simply trusting life again.

Symbolism

A woman sits in softness, eyes lifted and smiling as she blows on a dandelion puff. Feathers float around her, carried on a light breeze. A single radiant star glows overhead, pulsing with divine reassurance. The image exudes warmth, serenity, and open-hearted delight. The dandelion carries wishes, potential, and the trust that what is released will find its way. This moment isn't loud — it's sacred in its ease. The Star follows The Tower, offering light after the storm.

Upright Meaning

The Star shines in moments when you begin to believe again. You may be emerging from hardship or simply remembering your own light. This card signals a time of restoration, intuitive clarity, and soul-deep optimism. Breathe. You're aligning with your truest path.

Shadow / Reversed

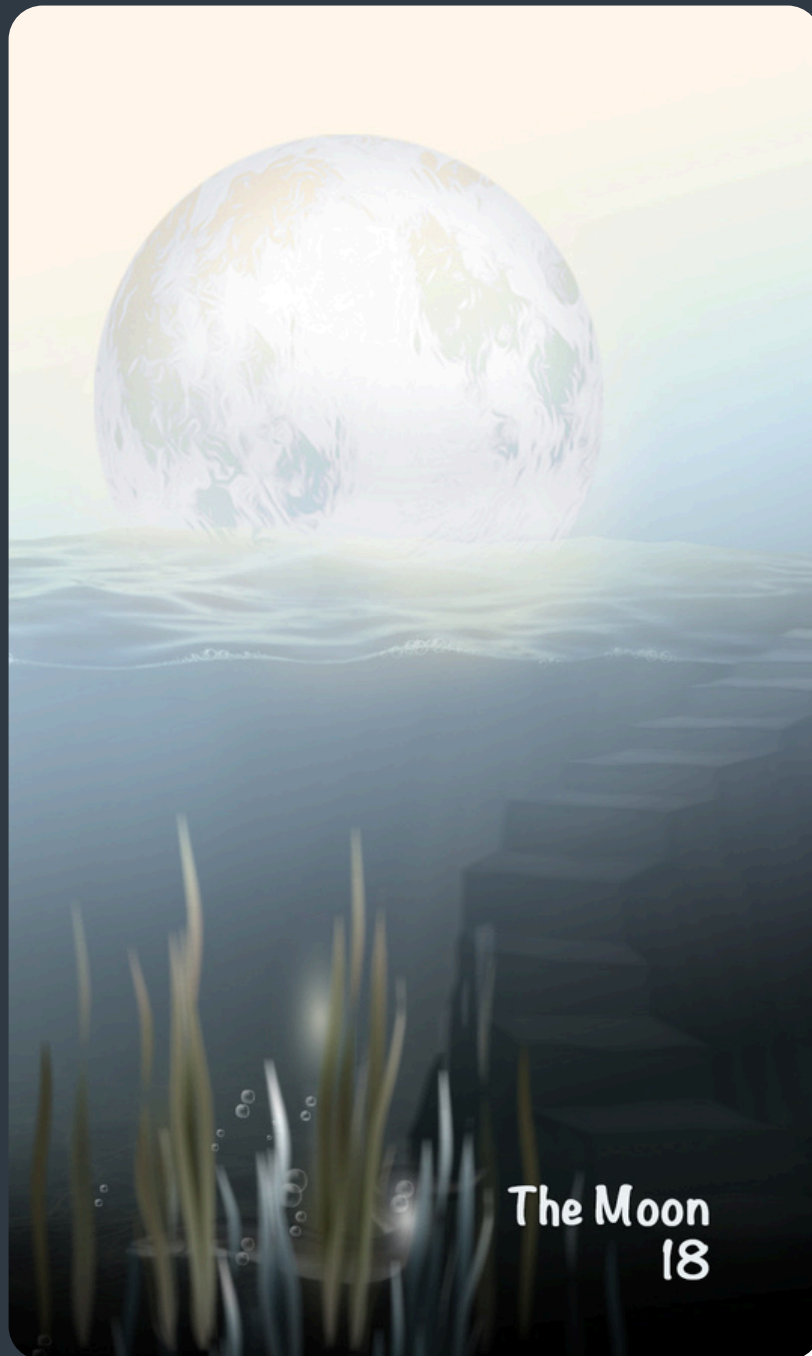
Reversed, The Star may point to discouragement, disconnection, or doubt in your own magic. You might feel lost or unsure where to turn. Even so, the star still shines — you just need to look up.

Reflection Prompt

Where in my life am I being called to soften, surrender, or wish again?

Affirmation

I trust in the light within and around me. Even in quiet moments, I am guided.



Major Arcana - The Moon

Illusion · Intuition · Subconscious · Mystery · Dreams · Shadow Work · Uncertainty

Astrological Correspondence

Pisces

Element: Water 💧

Core Message

The Moon calls us inward, toward the realms of mystery, emotion, and the unseen. It asks us to feel rather than figure out. In the space between clarity and confusion, you're invited to trust your inner knowing — even when the path isn't fully lit.

Symbolism

The glowing full moon rises above gently rippling water. Below the surface, a dark staircase descends into shadowed depths. Aquatic plants wave silently, and faint bubbles drift upward, as though secrets are surfacing from below. This image evokes the dreamy, sometimes disorienting nature of intuition, where what's real is filtered through sensation, memory, and symbol. The path forward may be submerged, but it's there — revealed only to those who slow down and sense.

Upright Meaning

The Moon often appears when something isn't fully clear. You may feel confused, emotionally tender, or unsure whom to trust — including yourself. This card urges you to pause, reflect, and listen to your instincts. Let your dreams and emotional responses guide you toward deeper truths.

Shadow / Reversed

Reversed, The Moon can reflect heightened anxiety, deception, or illusion. You may be lost in fear or projecting stories that aren't grounded in fact. This card suggests the need to gently illuminate the shadows — not to banish them, but to understand them.

Reflection Prompt

What emotions or inner nudges have I been ignoring — and what might they be trying to show me?

Affirmation

I trust the wisdom beneath the surface. Even in the dark, I am guided by the light within.



Major Arcana - The Sun

Joy · Clarity · Vitality · Innocence · Truth · Celebration · Inner Child

Astrological Correspondence

Sun

Element: Fire 🔥

Core Message

The Sun brings warmth, light, and affirmation. It reminds you that joy is not just possible — it's your birthright. This card invites you to trust in life again, to celebrate your being, and to open your heart to the moment's simple, profound beauty.

Symbolism

A woman sits on the shore, bathed in golden light, cradling her child with tenderness and peace. Her posture is relaxed and protective, her gaze soft. Behind her, a radiant sun rises high, casting its light over the calm ocean — a symbol of clarity, warmth, and timeless connection. The baby, an emblem of new life and innocent presence, reflects pure joy. The sunflower in her hair and the sparkle of the waves evoke vitality and grounded celebration. Nothing is forced. Everything simply is — alive, bright, and whole.

Upright Meaning

When The Sun appears, clarity and joy return. You may feel energized, inspired, or ready to embrace a season of growth. This card affirms your truth and encourages you to shine authentically. It's also a gentle reminder to savor the present and recognize the light that already lives within you.

Shadow / Reversed

In shadow, The Sun may reveal burnout, overexposure, or an avoidance of deeper emotions by chasing positivity. It may also point to feeling unseen, or disconnected from your true essence. Let the light in — but not at the expense of what still needs care beneath the surface.

Reflection Prompt

Where is joy already present in my life, waiting to be fully received and celebrated?

Affirmation

I welcome the light of truth and joy into my heart — I am safe to shine as I am.



Major Arcana - Judgement

Awakening · Rebirth · Accountability · Truth · Renewal · Liberation · Higher Calling

Astrological Correspondence

Pluto

Element: Fire 🔥

Core Message

Judgement marks a turning point — an invitation to rise from old versions of yourself and claim the truth of who you've become. This card calls you to reflect, release, and respond to your inner call with honesty and courage. The past has served its purpose. Now, you step forward, lighter and clearer.

Symbolism

A serene angel hovers in the clouds, eyes closed in sacred presence — neither condemning nor praising, but holding space for transformation. Below, figures emerge from open coffins: one dancing skyward in newfound freedom, the other bowed in reverence or grief. These opposing gestures capture the moment of reckoning — a personal resurrection. The clouds suggest liminality — between worlds, between who you were and who you're becoming. The light is soft but powerful, like a soul remembering itself.

Upright Meaning

Judgement signals a spiritual awakening, the urge to let go of guilt or outdated roles. You may be facing consequences — not as punishment, but as clarity. This is a moment to forgive, to take responsibility, and to step into a more honest version of yourself. You are being called — are you ready to answer?

Shadow / Reversed

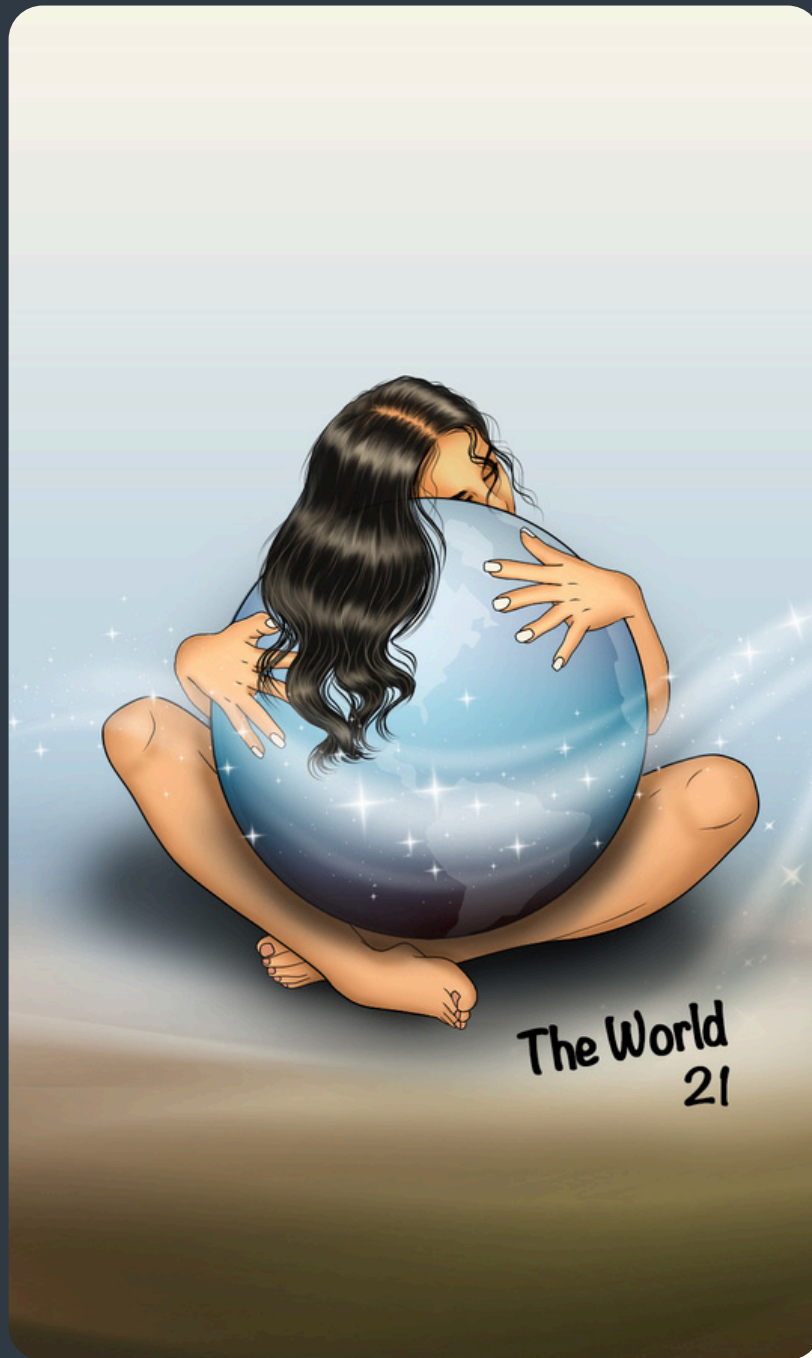
Reversed, Judgement can reflect avoidance of responsibility, fear of change, or harsh self-judgment. You may be clinging to outdated stories or refusing to release guilt. Trust that liberation doesn't require perfection — just the willingness to rise.

Reflection Prompt

What truths am I being called to face — and how might they free me?

Affirmation

I honor the lessons of my past and rise with clarity into who I am becoming.



Major Arcana - The World

Completion · Wholeness · Celebration · Integration · Arrival · Unity · Return to Self

Astrological Correspondence

Saturn

Element: Earth 🌍

Core Message

The World invites you to pause and acknowledge how far you've come. This card is a homecoming — not to a place, but to yourself. You are whole. You are enough. And everything you've been through has brought you here, ready to begin again with deeper wisdom and softer strength.

Symbolism

A woman embraces this beautiful Earth — with her entire being. Her body curls around it in reverence, intimacy, and love. She is nude, but not exposed — she is one with the world, not separate from it. Her hair flows freely, mirroring the organic movement of the stars dancing across the surface of the sphere. She is the world. And she is held by it, too. There's no distance here — only union. The soft background gradient hints at cycles completed, and new dawns unfolding.

Upright Meaning

The World signals fulfillment, integration, and joyful completion. A cycle has come to a meaningful close. You may be experiencing a personal achievement, a spiritual breakthrough, or simply the calm knowing that you are at peace with where you are. Celebrate it. You've earned it.

Shadow / Reversed

Reversed, this card may reflect a lingering feeling of incompleteness or being stuck at the threshold of closure. You might be resisting an ending — or underestimating how far you've come. Gently ask: what's keeping me from honoring this moment?

Reflection Prompt

In what ways have I come full circle — and how can I celebrate the wholeness of who I've become?

Affirmation

I honor the journey, the lessons, and the growth. I am whole, and I am ready for what comes next.

Journey

Minor Arcana - Wands





Minor Arcana - Ace of Wands

Inspiration · New beginnings · Spark of energy · Desire · Creative ignition

Astrological Correspondence

The Spark of Fire

Element: Fire 🔥

Core Message

Something new is lighting up within you. This card signals the start of a passionate journey — one fueled by curiosity, courage, and bold potential.

Symbolism

A vibrant cupcake is held reverently by a pair of hands, symbolizing the birth of something cherished and full of possibility. Atop the cupcake, a sparkler ignites, radiating excitement, clarity, and momentum — the very essence of a creative breakthrough. The sparkler doubles as a wand, emerging from a swirl of frosting adorned with sweet delights, showing how joy and intention can coexist in manifestation. A chocolate heart, twin wafer sticks, and candy bits add richness and indulgence — reminding us that beginnings can be both meaningful and fun. The warm, golden backdrop amplifies this as a moment of energetic alignment, where inspiration meets readiness.

Upright Meaning

The Ace of Wands announces a burst of creative or spiritual energy. You may be feeling a new sense of drive, an idea that won't let go, or a call to take inspired action. This is your invitation to say yes. Start the thing. Follow the nudge. You don't need to see the full path — just honor the spark. What you plant now has powerful potential to grow.

Shadow / Reversed

Reversed, this card may suggest blocked passion, hesitation, or an unlit spark. You may be feeling uninspired, fearful of failure, or waiting for "the right time." But the fire doesn't wait — it wants movement. Start small, start messy — just start.

Reflection Prompt

What is calling to be ignited within me — and how can I honor that spark, even in small ways?

Affirmation

I welcome inspiration with open hands. I trust the spark within me to lead me toward vibrant new beginnings.



Minor Arcana - 2 of Wands

Planning · Choice · Vision · Possibility · Readiness to expand

Astrological Correspondence

Mars in Aries

Element: Fire 🔥

Core Message

The world is calling — are you ready to answer? This card marks a moment of vision and choice. Expansion is possible, but intention must guide the next step.

Symbolism

A barefoot woman stands on a balcony, gazing out at a glowing horizon. In one hand, she holds sunglasses — a symbol of perspective — while the other holds a wand of inspiration not yet set afire. At her feet lie travel items: a beach ball, sunhat, camera, and passport — clear markers of future movement, adventure, and potential. To the right, a guitar leans casually against the railing, hinting at the soulful creativity that supports this journey. The scene is still, but pregnant with possibility. The door behind her remains open — a signal that the choice hasn't yet been made, but the moment is ripe.

Upright Meaning

The Two of Wands appears when you are contemplating a new path. There is clarity, vision, and the spark of ambition — but it's still early. You may be choosing between staying comfortable and stepping into something more expansive. The future is calling, and you have what you need. This is the planning stage — rich with inspiration and grounded with purpose. Make the map, trust your instincts, and prepare to move forward.

Shadow / Reversed

Reversed, this card may indicate hesitation, fear of the unknown, or the overwhelm of too many options. You might be stuck in indecision or doubting your readiness. Return to your "why." A step forward, even a small one, begins the journey.

Reflection Prompt

What vision am I holding for my future — and what small, intentional step will bring it closer?

Affirmation



Minor Arcana - 3 of Wands

Expansion · Foresight · Momentum · Opportunity · Trust in the process

Astrological Correspondence

Sun in Aries

Element Fire 🔥

Core Message

Momentum is building. You've made your choice — now the horizon opens wide. This card marks the moment where preparation meets forward motion, encouraging faith in what's coming.

Symbolism

A traveler stands at the edge of a dock, gazing out toward a glowing sunset that reflects brilliantly on the open sea. A large backpack rests firmly on his shoulders, showing he's committed to the path ahead, while a second duffel sits beside him — a reminder that he's not only prepared but willing to let go of what's no longer necessary. Three wands form a supportive frame around him, echoing structure, stability, and confidence in direction. The ocean glistens with the promise of new territory, of effort already in motion. There's no turning back — and that's a good thing.

Upright Meaning

The Three of Wands appears when you've already taken action — and now the results are beginning to unfold. It's a card of expansion and optimistic outlook. Travel, growth, or new opportunities may lie ahead. This is your reminder to remain open, steady, and aligned with your purpose. You've laid the groundwork. Now trust the tide to carry you forward.

Shadow / Reversed

Reversed, this card can point to impatience, fear of setbacks, or second-guessing your decisions. It may reflect delays or a struggle to see progress. Step back, realign with your purpose, and remember: all tides shift in time.

Reflection Prompt

What progress have I already made — and how can I continue moving forward with purpose and trust?

Affirmation

I embrace what lies ahead. With trust in my path and courage in my heart, I welcome the unfolding journey.



Minor Arcana - 4 of Wands

Celebration · Stability · Harmony · Homecoming · Community

Astrological Correspondence

Venus in Aries

Element Fire 🔥

Core Message

This is a moment to celebrate where you are — to honor the beauty of connection, commitment, and community. The Four of Wands reminds us that joy multiplies when shared.

Symbolism

The card depicts a festive scene beneath a ceremonial arch of four decorated wands. Two figures — likely newly joined in union — stand side by side, gazing toward a radiant burst of fireworks in the sky. Behind them, a joyful guest raises a glass in celebration, her braided hair and dress echoing themes of festivity and reverence. The veils tied to the wands, adorned with roses and sparkle, hint at sacredness and stability. This is a scene of arrival — the kind of moment where love, belonging, and shared dreams are grounded into the real.

Upright Meaning

The Four of Wands signifies celebration, achievement, and heartfelt connection. Whether marking a literal event — like a wedding, homecoming, or reunion — or a metaphorical milestone, this card asks you to pause and savor joy. You are held and honored here. Let yourself be seen and loved.

Shadow / Reversed

When reversed, this card may point to delays in celebration, feeling disconnected from community, or internalized beliefs that you don't deserve joy. Gently challenge these ideas. You belong in the light of celebration, too.

Reflection Prompt

Where in my life can I celebrate how far I've come — and who has helped me get here?

Affirmation

I welcome joy and connection. I celebrate life's milestones with gratitude, love, and open arms.



Minor Arcana - 5 of Wands

Tension · Competition · Disruption · Playful conflict · Creative friction

Astrological Correspondence

Saturn in Leo

Element Fire 🔥

Core Message

Not all conflict is destructive. Sometimes, healthy tension stirs energy, clears stagnation, and sparks new momentum. The Five of Wands encourages a fresh perspective on chaos.

Symbolism

A vibrant piñata bursts in midair, surrounded by flying candy and a flurry of wooden sticks. The piñata's form is playful and festive, yet it's also the focal point of clashing energy. The five scattered wands suggest both collaborative effort and uncoordinated action — a scene of joyful disruption. The falling candy represents the unexpected rewards that can come from challenge or competition. This moment is dynamic and a little chaotic, but it carries the potential for breakthrough.

Upright Meaning

The Five of Wands appears when energies clash — in a group project, a creative block, or internal doubt. While it may feel messy, this card invites you to stay present. Productive tension can lead to growth. Rather than avoiding the friction, consider what it's revealing and how it might energize you or a situation.

Shadow / Reversed

In reverse, this card may signal unproductive conflict, burnout from trying to prove yourself, or avoidance of necessary confrontation. It can also indicate internalized pressure or scattered focus. Take a breath. Choose clarity over chaos.

Reflection Prompt

Where in my life is conflict helping me grow — and where is it simply draining me?

Affirmation

I meet challenge with courage and curiosity, knowing it can clear the path to something sweeter.



Minor Arcana - 6 of Wands

Victory · Recognition · Confidence · Success · Leadership

Astrological Correspondence

Jupiter in Leo

Element Fire 🔥

Core Message

Confidence grows when we allow ourselves to be seen in our truth. The Six of Wands celebrates effort rewarded, hard-earned wins, and the joy of shared success.

Symbolism

A jubilant figure bursts through a finish line, arms raised in triumph, surrounded by a flurry of supportive hands mid-clap. Her vibrant shirt features a radiant geometric heart — a symbol of alignment and authenticity. The six surrounding wands form the frame of celebration, standing tall like pillars of support. The energy is electric, joyful, and contagious. This scene reflects the moment we are acknowledged not just for what we've done, but for how we've shown up.

Upright Meaning

This card heralds success and recognition after challenge. Whether it's a personal milestone or public accomplishment, your efforts are seen and valued. Allow yourself to fully feel the win — and to receive the applause. The Six of Wands also reminds you that confidence inspires others. Your journey uplifts more people than you realize.

Shadow / Reversed

Reversed, this card may signal imposter syndrome, fear of attention, or undervaluing your achievements. It might also point to arrogance or the need for external validation. Return to your inner compass — and trust what you've earned.

Reflection Prompt

Where do I need to let myself be celebrated — without shrinking or deflecting?

Affirmation

I stand in my success with gratitude and pride, knowing I've earned every step.



Minor Arcana - 7 of Wands

Challenge · Courage · Resilience · Defense · Standing Your Ground

Astrological Correspondence

Mars in Leo

Element: Fire 🔥

Core Message

True strength isn't just about winning — it's about holding your ground when it matters most. This card reminds you that you are capable, worthy, and already on higher ground.

Symbolism

A determined woman crouches on a rocky peak, gripping a staff with both hands as she meets unseen resistance from below. Her athletic stance, stylish jogger suit, and focused gaze speak to discipline, readiness, and an unwillingness to be pushed aside. Beneath her, six wands rise from below the mountain, each a symbol of challenge, opposition, or even envy. Yet she remains unwavering. Her elevated position and grounded stance reflect both her advantage and the effort required to maintain it. This is not a passive card — it's a visual declaration of self-worth, perseverance, and earned power.

Upright Meaning

The Seven of Wands appears when you're being tested or challenged. It may feel like others are questioning your position, your success, or your values. Yet this card affirms: you have what it takes to stand firm. You've earned your place — now defend it with integrity. Even if you're tired or feel outnumbered, remember that you have the higher ground. Let this be a moment to assert your truth, not shrink from it.

Shadow / Reversed

In reverse, this card may point to burnout, defensiveness, or self-doubt. Perhaps you're questioning whether it's worth the fight, or maybe internal fears are louder than any real opposition. This can also reflect a tendency to over-explain or prove yourself unnecessarily. Step back, recalibrate, and ask: am I protecting something meaningful — or just reacting?

Reflection Prompt

Where in my life am I being called to hold firm — and how can I do so without losing my center?

Affirmation

I honor the ground I've gained and meet each challenge with courage and clarity.



Minor Arcana - 8 of Wands

Momentum · Progress · Clarity · Movement · Acceleration

Astrological Correspondence

Mercury in Sagittarius

Element: Fire 🔥

Core Message

Energy is moving swiftly now — trust the flow. This card signals that clarity, communication, or results are finally arriving, often faster than expected.

Symbolism

Eight wands soar diagonally across the sky, each perfectly aligned in forward motion. The background is a glowing gradient, warm and full of promise, suggesting movement through space and time with ease. Surrounding the wands are soft blue butterflies and swirling ribbons of golden light — symbols of transformation, intuition, and divine timing. There's no clutter or conflict here, just pure kinetic energy. Everything is in motion, guided by unseen forces toward resolution or completion. The scene radiates both grace and urgency.

Upright Meaning

The Eight of Wands shows up when things are finally falling into place. Momentum builds. Delays lift. Conversations, projects, or emotions once tangled now move forward with clarity and purpose. Expect quick developments — travel plans, messages, or sudden insights may arrive. This card is a green light from the universe: go for it. You're in sync with the flow of life.

Shadow / Reversed

When reversed, this card may indicate scattered energy, delays, or missed communication. You may be rushing without direction, or feeling like everything is happening too fast. Take a breath. Get clear on your intentions before moving forward. Not all acceleration is progress.

Reflection Prompt

Where is life already guiding me forward — and how can I move with it rather than resist or control?

Affirmation

I trust the pace of life and welcome forward movement with clarity and ease.



Minor Arcana - 9 of Wands

Resilience · Boundaries · Perseverance · Protection · Wounded Warrior

Astrological Correspondence

Moon in Sagittarius

Element: Fire 🔥

Core Message

You've come so far — even if you're tired, your strength is in your survival. This card honors the part of you that refuses to give up, even when bruised or weary.

Symbolism

A young woman sits alert yet exhausted on a rock, gripping a wand like a staff of support and defense. Behind her stand eight other wands, forming a protective barrier — or perhaps a prison of vigilance. She bears visible signs of hardship: a bandage on her hand, a small scar on her cheek, and guarded, knowing eyes. Her layered hoodie and wrapped limbs suggest both healing and readiness. The background is muted, evoking calm after conflict — but the stance says the battle isn't quite over. This card captures the quiet strength of someone who has weathered the storm and still shows up.

Upright Meaning

The Nine of Wands appears when you're close to the finish line, but something — fatigue, fear, or old wounds — makes you hesitate. It's a card of inner strength, persistence, and protecting hard-won progress. You may be navigating burnout or anticipating the next challenge. Take heart: you've already overcome so much. Now is a time for boundaries, pacing yourself, and trusting your ability to see things through.

Shadow / Reversed

In shadow, this card can reflect hypervigilance, defensiveness, or emotional walls built from past pain. You may be expecting harm where there is none, or reliving an old pattern that no longer serves. Not every moment needs to be survived — some are meant to be lived.

Reflection Prompt

What part of me is still fighting — and what would it take to feel truly safe again?

Affirmation

I honor the strength that brought me here — and I allow space for healing and peace.



Minor Arcana - 10 of Wands

Burden · Responsibility · Exhaustion · Determination · Completion

Astrological Correspondence

Saturn in Sagittarius

Element: Fire 🔥

Core Message

You've made it through the hardest part. This card invites you to pause, reflect, and release. The journey shaped you — but you don't have to carry it all forward.

Symbolism

A lone traveler stands at the base of a steep, winding path — now behind them. Their clothing is worn and tattered, their posture tired, but they hold a lit staff with quiet strength. A bundle of ten wands rests at their feet, secured and laid down beside a flickering circle of candles — markers of reverence, completion, and spiritual acknowledgment. The bag suggests readiness for what comes next, but this moment is one of sacred pause. The traveler has made it through the climb. Now, they must decide what to keep and what to leave behind.

Upright Meaning

The Ten of Wands appears when you've been carrying a heavy load — physically, emotionally, or spiritually. You've done the work. You've walked the path. Now is the time to assess what burdens you no longer need to bear. This card marks both completion and transition: you may be close to your goal, but you won't get there by dragging what's outdated. Lighten the load. Honor the climb — and let yourself rest.

Shadow / Reversed

In reverse, this card can reflect chronic overgiving, obligation, or internalized pressure to prove your worth through effort. You may be struggling to release old responsibilities or guilt that's no longer relevant. Let go of the story that says it's only valuable if it's hard. Peace is earned, too.

Reflection Prompt

What am I still carrying out of habit — and what am I finally ready to set down?

Affirmation

I honor my path, and I give myself permission to rest, release, and move forward freely.



Court Cards - Page of Wands

Curiosity · Creativity · Enthusiasm · Exploration · New Inspiration

Astrological Correspondence

Earth of Fire

Element: Fire 🔥

Core Message

There's magic in starting fresh. This card celebrates unfiltered excitement, spontaneous joy, and the courage to express yourself freely.

Symbolism

A playful figure bursts into the frame, beaming with enthusiasm, heart-shaped sunglasses perched boldly on her nose. She flashes peace signs with both hands and leans into the viewer with joyful abandon. Her pink splatter-dyed shirt and carefree stance suggest spontaneity and full-hearted expression. At her feet, a pile of pastel macarons and melting ice cream cones enhance the atmosphere of lightness, indulgence, and fun. Her upright wand, held with ease, becomes less of a tool and more of a prop — a playful baton signaling she's ready to turn anything into an adventure.

Upright Meaning

The Page of Wands represents the spark of something new — a creative idea, a bold invitation, or the first step of a personal quest. This energy is youthful, passionate, and open to discovery. You don't need a clear plan right now — just the courage to follow what excites you. Stay curious. Stay expressive. Say yes to inspiration.

Shadow / Reversed

In reverse, this card may reflect scattered energy, impulsiveness, or self-doubt. You might feel unsure where to channel your excitement or hesitant to start something new. There's a difference between immaturity and inexperience — don't let fear rob you of joyful beginnings. Start messy if you have to.

Reflection Prompt

What excites me right now — and how can I follow that spark, even if I don't know where it leads?

Affirmation

I follow what lights me up, trusting joy to lead the way.



Court Cards - Page of Wands

Charm · Adventure · Momentum · Risk-taking · Playful Drive

Astrological Correspondence

Air of Fire

Element: Fire 🔥

Energetically aligned with Sagittarius or Aries vibes, though not fixed to a zodiac sign.

Core Message

You're being asked to move boldly and playfully toward your next adventure. Confidence, not caution, is your guide.

Symbolism

A charming figure walks confidently with a relaxed swagger, staff slung casually in one hand. His smile is magnetic, his posture loose, inviting, and full of life. Behind him, crisscrossing footprints hint at a curious and untethered path — he's not afraid to try, pivot, or explore. His tousled hair and layered clothes give a windswept, traveler's vibe, while the warm palette glows with enthusiasm and ease. The Knight of Wands here doesn't charge — he glides, led by excitement and the thrill of movement. The message is clear: this is someone who moves through life like a spark-catching wind.

Upright Meaning

The Knight of Wands arrives with passion, adventure, and charisma. He's the embodiment of bold beginnings, confident risks, and enthusiastic momentum. You might be starting something new, craving change, or simply feeling more magnetic. Embrace it. Just make sure you're not running on impulse alone. This is a card of joyful drive — not reckless speed.

Shadow / Reversed

Reversed, the Knight of Wands can signal inconsistency, impatience, or impulsive decisions. You may be chasing a thrill without a plan, or abandoning things the moment they become difficult. There's a difference between movement and progress — consider what's truly worth your fire.

Reflection Prompt

Am I acting from inspiration or distraction — and how can I move with both energy and intention?

Affirmation

I move forward with passion and play, trusting my journey to unfold one bold step at a time.



Court Cards - Queen of Wands

Confidence · Radiance · Magnetism · Purposeful Action · Inner Light

Astrological Correspondence

Water of Fire

Element: Fire 🔥

Often resonant with Leo or Aries energy due to its expressive, radiant nature.

Core Message

You are your own source of light. This card invites you to lead with confidence, own your presence, and let your authentic energy shine.

Symbolism

A regal woman walks barefoot through an open field, golden skirt flowing behind her like a flame. A crown glitters atop her head — not out of entitlement, but earned self-respect. She holds her wand upright, adorned with a crystal, symbolizing clarity, intention, and magic grounded in action. Fireworks bloom behind her, not as spectacle, but as celebration. She walks with grace and purpose, her gaze serene and forward-facing. This Queen doesn't demand attention — she attracts it naturally through her grounded presence and radiant inner fire.

Upright Meaning

The Queen of Wands is the embodiment of fierce self-assurance and magnetic warmth. She encourages you to stand tall in your truth, express yourself with boldness, and pursue your goals without shrinking. Whether leading others, stepping into visibility, or nurturing a creative spark — do it with heart and fire. This is a moment to shine without apology.

Shadow / Reversed

Reversed, this card may point to self-doubt, people-pleasing, or hiding your power for fear of judgment. You may be overextending or dimming your light to make others comfortable. Reclaim your fire. You don't need permission to be fully yourself.

Reflection Prompt

Where am I holding back my light — and what would it feel like to express myself fully and unapologetically?

Affirmation

I radiate confidence, purpose, and joy. My light uplifts everyone I meet — including myself.



Court Cards - King of Wands

Leadership · Vision · Influence · Courage · Inspired Action

Astrological Correspondence

Fire of Fire

Element: Fire 🔥

Often associated with Leo or Aries energy for its confident and commanding presence.

Core Message

This is your sign to lead from within. The King of Wands asks you to step fully into your vision, trust your voice, and guide others by example.

Symbolism

A charismatic figure stands tall with effortless confidence, one hand resting in his pocket, the other on a staff. His gaze looks ahead — calm, focused, and visionary. A crown-like band rests across his forehead, suggesting earned wisdom and natural authority rather than a need to dominate. Stylish but unpretentious, he blends approachability with presence. His rolled sleeves and relaxed posture convey someone who leads not just with words but with action. The warm landscape behind him hints at expansive opportunity, as if the world is his canvas.

Upright Meaning

The King of Wands arrives when you're being called to lead with boldness and heart. You may have a vision others need, or a fire within that's ready to light the way. This card affirms your readiness to inspire, initiate, and influence with integrity. You're not here to play small — you're here to move mountains by being fully, unapologetically yourself.

Shadow / Reversed

Reversed, this card may indicate ego-driven behavior, impatience, or over-controlling tendencies. You might be forcing outcomes, overstepping boundaries, or avoiding true vulnerability behind a confident mask. True leadership uplifts — it doesn't overpower. Reconnect with humility and service.

Reflection Prompt

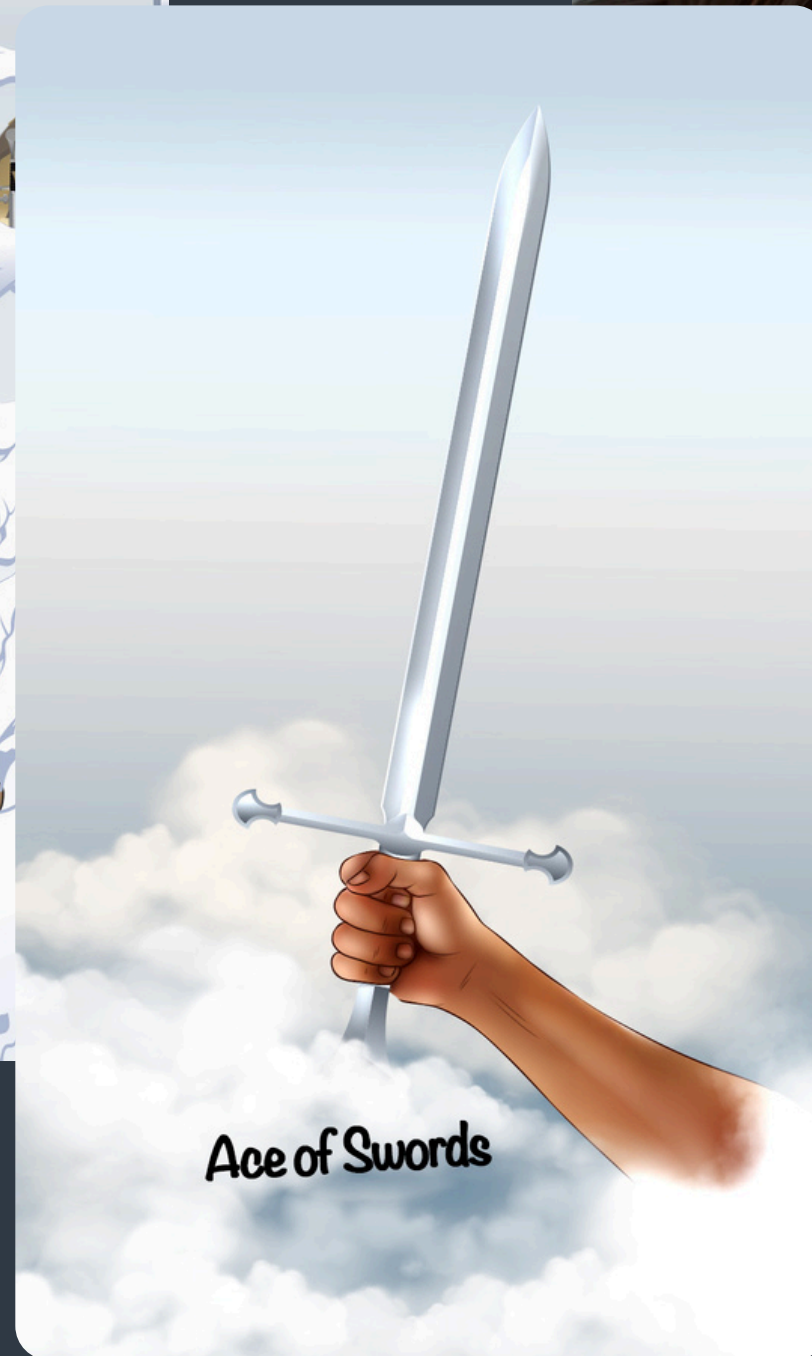
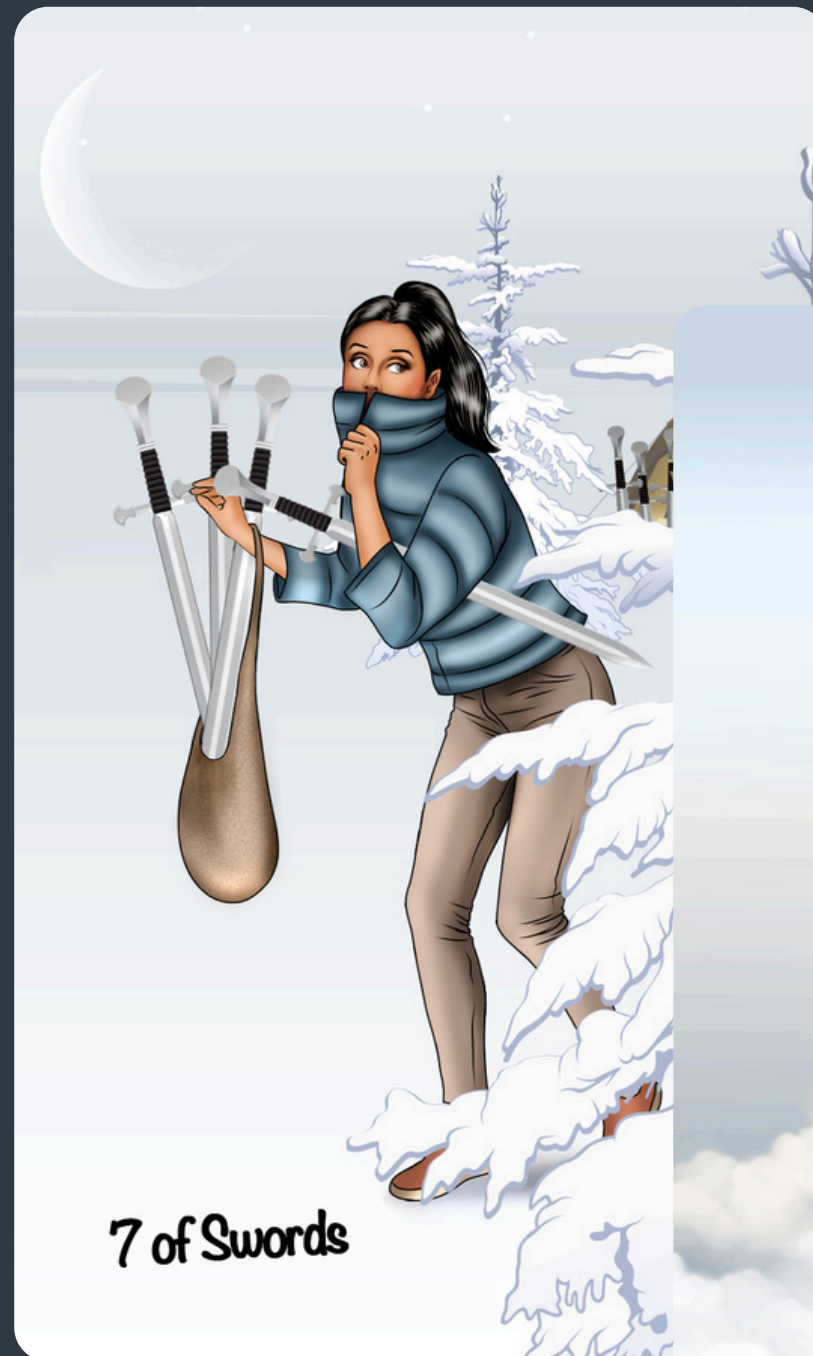
Where am I being called to lead — and how can I do so with both strength and heart?

Affirmation

I lead with purpose, clarity, and courage. My fire lights the path — for myself and others.

Journey

Minor Arcana - Swords





Minor Arcana - Ace of Swords

Clarity · Truth · Insight · Breakthrough · New ideas

Astrological Correspondence

The Spark of Air

Element: Air 🌬️

Core Message

A moment of clarity arrives — cutting through confusion with unmistakable precision. This card heralds a new way of seeing or thinking. It's a call to trust your mind, speak your truth, and stand in the power of your perspective.

Symbolism

A firm hand emerges from a cloud, confidently gripping a double-edged sword. The background is open sky — soft, gradient light representing spacious potential. The sword gleams with sharp intention, a tool of clarity and discernment. The surrounding clouds hint at prior uncertainty, now parting to reveal a mental breakthrough. This visual reflects a piercing insight or bold idea that asks to be acknowledged and acted upon with courage and honesty.

Upright Meaning

The Ace of Swords brings fresh mental energy — a new idea, a moment of truth, or a flash of insight. Something is becoming clear. This card invites you to speak honestly, begin that conversation, write that piece, or make the decision you've been circling. It's a green light to move forward with logic and precision.

Shadow / Reversed

When reversed, this card may point to clouded thinking, over-analysis, or avoidance of a necessary truth. You may be doubting your voice or withholding clarity in a situation that needs it. Be mindful of using your words as weapons. Seek balance between truth and compassion.

Reflection Prompt

Where is clarity trying to emerge in my life — and what truth am I ready to speak or see?

Affirmation

I honor the truth within me. My clarity is a gift — and I wield it with purpose and grace.



Minor Arcana - 2 of Swords

Indecision · Inner conflict · Avoidance · Stalemate · Mental tension

Astrological Correspondence

Moon in Libra

Element: Air

Core Message

Clarity doesn't always come through more thinking — sometimes, peace arrives when you give yourself permission to pause, feel, and trust what's beyond logic.

Symbolism

A hooded figure stands resolute against turbulent waters, gripping two crossed swords across her chest. The swords form a protective barrier, echoing the barbed wire circle behind them — a visual of internal armor. Her eyes are partially covered, suggesting uncertainty or the unwillingness to fully see a situation. The crashing waves reflect emotional unrest, while crows flying overhead hint at messages ignored or truths circling above. Her leather jacket and defensive posture suggest a readiness to fight, yet her stillness implies the fight is within. This card depicts the edge between mental control and emotional surrender — a quiet tension between action and stillness.

Upright Meaning

The Two of Swords often appears when you're at a mental crossroads. You may be stuck between two choices, torn between head and heart, or avoiding a decision altogether. Though it may feel like inaction is safest, the longer you delay, the more chaotic the waters beneath you become. This card invites you to gently remove the blindfold — not to force clarity, but to acknowledge what you're feeling. Stillness is useful, but clarity follows courage.

Shadow / Reversed

Reversed, this card can indicate extreme avoidance, mental overwhelm, or stubborn refusal to engage with necessary truths. You may be disconnected from your intuition or suppressing emotional cues in favor of logic. If you've been indecisive for too long, the pressure may now be surfacing. It's okay to not have all the answers — but it's time to listen.

Reflection Prompt

What truth am I avoiding — and what would happen if I approached it with compassion?

Affirmation

I honor the stillness, but I am brave enough to seek the truth when I'm ready to see it.



Minor Arcana - 3 of Swords

Heartbreak · Emotional release · Truth revealed · Grief · Growth through pain

Astrological Correspondence

Saturn in Libra

Element: Air 🌬️

Core Message

The truth cuts deep — but from this wounding, clarity and transformation can emerge. This card marks a moment of raw honesty, one that clears illusion and opens the way for authentic healing.

Symbolism

A woman cries out mid-storm, gripping a mended heart pierced by three silver swords. The rain streams down, indistinguishable from her tears, symbolizing the cleansing nature of sorrow. Her raw expression and open mouth reflect not silence, but the power of finally giving voice to grief. One sword is twisted, one perfectly centered, and one cracks the heart — revealing the multifaceted nature of pain: betrayal, realization, and release. A raven perches on a bare branch above her, a witness to endings and transformation. The barren tree shows there's no turning away — only through can she move forward.

Upright Meaning

The Three of Swords arrives with painful clarity. It may speak to heartbreak, separation, or the revelation of a truth you were not ready to face. Yet this card also brings catharsis — an invitation to release what hurts so you can finally begin healing. This moment is tender, but it's also sacred. Let yourself feel it fully.

Shadow / Reversed

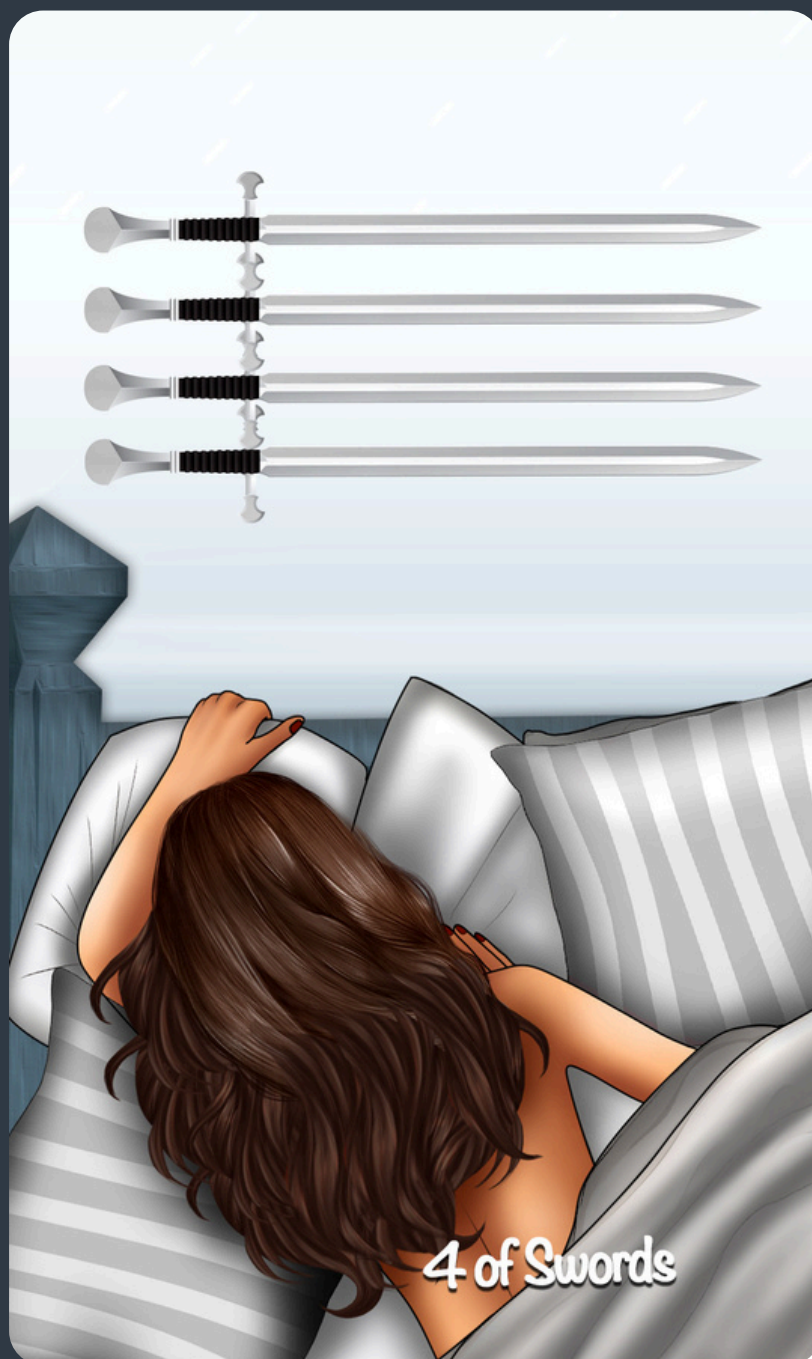
In the reversed position, this card may suggest unresolved grief, denial, or self-blame. You might be avoiding the emotional weight of a loss, suppressing your feelings, or stuck in patterns of pain. Healing asks for acknowledgment — not avoidance. Begin by naming the wound.

Reflection Prompt

Where have I been holding pain in silence — and what would it feel like to let that pain have a voice?

Affirmation

I honor my heartbreak as part of my healing. I give myself permission to feel and to release.



Minor Arcana - 4 of Swords

Rest · Recovery · Retreat · Reflection · Mental reset

Astrological Correspondence

Jupiter in Libra

Element: Air 🌬️

Core Message

Pause is sacred. After mental or emotional strain, this card offers permission to retreat into stillness so that clarity can return. Rest is not avoidance — it is an act of restoration.

Symbolism

A woman lies curled on a bed under soft, striped blankets, her body relaxed and her back turned to the world. Above her, four swords hang in alignment — symbolic of both the tension she's laid down and the thoughts still hovering nearby. The cool palette and calm setting reinforce a sense of retreat and inner focus. This is a card of sanctuary, a sacred timeout to heal from overexertion or emotional wounds. The swords remain visible, suggesting her challenges are not gone — but she has stepped away to reset her energy and perspective.

Upright Meaning

This card invites you to slow down and create space for rest. You may be feeling mentally drained, emotionally spent, or simply overwhelmed. The Four of Swords says: you don't need to fix it all right now. Instead, step back. Sleep. Meditate. Take a walk without solving anything. Let your nervous system breathe.

Shadow / Reversed

When reversed, this card may indicate burnout, refusal to rest, or chronic avoidance of necessary healing. You may be pushing through when what you really need is deep stillness. Alternatively, it may suggest you're stuck in a passive state, using withdrawal as a form of escape. Consider: what kind of rest truly restores me?

Reflection Prompt

What am I mentally or emotionally carrying that I could gently set down — even for a moment?

Affirmation

I honor my need for rest. Stillness clears my mind and restores my strength.



Minor Arcana - 5 of Swords

Conflict · Boundaries · Fallout · Tension · Emotional residue

Astrological Correspondence

Venus in Aquarius

Element: Air 🌬️

Core Message

Not every battle is worth winning. The Five of Swords arrives when the cost of victory weighs heavily — a reminder to consider what's left behind when pride or self-preservation leads the way.

Symbolism

A young woman stands with her head bowed and palm to her temple — a gesture of emotional fatigue and inner conflict. She holds three swords bundled tightly in her arm with a rope, suggesting a mix of control and entanglement. Two more swords lay at her feet, echoing loss or unresolved tension. Footprints in the background suggest others have walked away, leaving a wake of silence. The soft gray landscape creates a muted emotional field — a space after the storm, but before clarity. This card speaks to aftermaths: of disagreements, misaligned choices, or miscommunications — and the vulnerability that remains.

Upright Meaning

This card can point to recent conflict, tension, or separation. You may have stood your ground, made a hard decision, or experienced a falling out. There's no shame in defending yourself — but this card invites reflection. Was the outcome aligned with your values? What emotional cost was paid? The Five of Swords suggests you may need time to process what happened and decide how to move forward with more integrity and care.

Shadow / Reversed

Reversed, this card may indicate guilt, regret, or a tendency to ruminate on what went wrong. You may be holding onto resentment — or pushing down feelings in favor of appearing strong. This is a time to release shame, forgive yourself (or others), and set clearer boundaries going forward.

Reflection Prompt

What am I still holding onto from a recent conflict — and how might I soften or release it for my own peace?

Affirmation

I release the need to be right and choose the path of inner peace and self-respect.



Minor Arcana - 6 of Swords

Transition · Release · Healing · Journey

Astrological Correspondence

Mercury in Aquarius

Element: Air 🌬️

Core Message

This card signals a gentle yet meaningful shift — the moment when we begin moving away from mental turbulence and toward calmer internal waters. It's a quiet yes to healing, growth, and reclaiming your "own" peace.

Symbolism

A woman sits at the bow of a boat, her back to us, facing a vast horizon. Though loosely bound, she is unrestrained — the open sea before her reflects possibility and recovery. The boat glides through soft fog, symbolic of transition, uncertainty, and trust in what lies ahead. Six swords pierce the boat's planks but do not stop its movement — representing the truths, lessons, or wounds we carry that no longer anchor us. This is a sacred crossing, one not about fleeing, but about honoring the necessity of change.

Upright Meaning

The Six of Swords invites you to embrace a period of transition. This may be physical movement, emotional release, or mental detachment from what no longer serves. It often follows conflict or pain, offering a path forward — not of forgetting, but of integrating what's been and making peace with it.

Shadow / Reversed

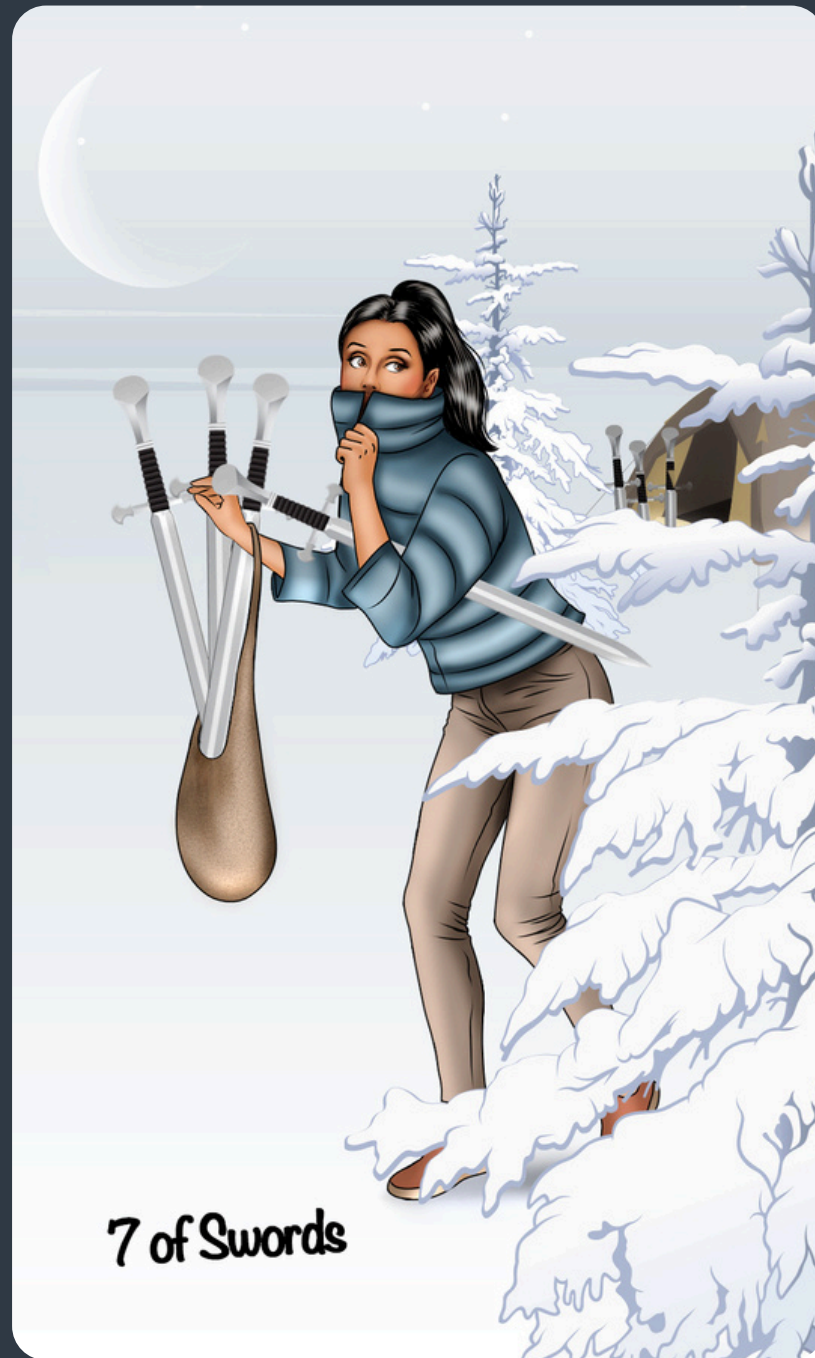
Reversed, this card can suggest resistance to moving on, staying mentally stuck, or struggling to leave the familiar behind — even if it's no longer healthy. Avoidance of discomfort may delay your healing. Give yourself permission to move forward, even if you can't see the shore just yet.

Reflection Prompt

What am I being called to leave behind — and what support do I need to cross this threshold with more ease?

Affirmation

I am moving toward peace. I release what no longer serves and trust the path unfolding before me.



Minor Arcana - 7 of Swords

Deception · Strategy · Self-preservation · Secrets · Mental games

Astrological Correspondence

Moon in Aquarius

Element: Air

Core Message

What are you not saying — and why? The 7 of Swords surfaces when you're navigating delicate territory, where truth and timing dance carefully. Sometimes, subtlety is protection. Other times, it's avoidance. This card invites honest reflection about your intentions, strategies, and the stories you tell yourself (and others).

Symbolism

A lone woman in a puffer coat moves quietly through a snowy forest at night, five swords tucked into her arms and one strapped at her side. Her eyes dart sideways, alert but not malicious — she's clearly sneaking away from a nearby encampment, still dimly lit in the distance. The crescent moon above suggests secrets or instinctual choices, while the snowy environment amplifies silence, stealth, and psychological isolation. Are we witnessing strategy... or betrayal? The answer may lie in motive.

Upright Meaning

This card often signals a need for discretion, strategy, or quiet action. You may be protecting yourself from scrutiny, sidestepping confrontation, or gathering what's needed before making a move. Be honest: is your current approach ethical and aligned — or are you slipping into patterns of avoidance or deception? The 7 of Swords invites mindfulness in both communication and motive.

Shadow / Reversed

When reversed, this card can point to secrets backfiring, dishonesty coming to light, or internal guilt for unspoken actions. It may also indicate someone else is acting behind the scenes. The call here is for clarity and integrity — especially if something feels off. You're being nudged to come clean, clarify your motives, or walk away from hidden agendas.

Reflection Prompt

What truth am I avoiding — and how might I express it with both care and courage?

Affirmation

I move with quiet clarity. I align my strategy with truth and integrity.



Minor Arcana - 8 of Swords

Restriction · Fear · Illusion · Mental entrapment · Powerlessness

Astrological Correspondence

Jupiter in Gemini

Element: Air 🌬️

Core Message

The 8 of Swords reminds us that mental captivity is often self-imposed. The way forward may not be easy — but it is possible. The key lies in reclaiming your inner clarity and choosing to believe in your “own” strength.

Symbolism

A woman sits on the ground, encircled by eight swords forming a prison-like boundary. She's blindfolded, her hands covering her head in distress, unable to see that the swords aren't actually touching her. The blindfold and expression reflect emotional overwhelm and inner fear, not true physical limitation. Her teddy bear shirt suggests a longing for comfort or safety. The blurred landscape reinforces the uncertainty she feels, while her open-toed heels highlight how ill-equipped she believes she is to “walk through” this challenge — even though she could, if she realized her own agency.

Upright Meaning

You may be feeling trapped or unsure how to proceed. Overthinking or fear may be clouding your perception. This card urges you to pause and notice: are your limitations external... or internal? You're not as stuck as you feel. Ask what support you need and trust that clarity will come once you stop resisting the discomfort.

Shadow / Reversed

When reversed, this card can point to victim mentality or persistent self-doubt. Alternatively, it may suggest a breakthrough — seeing through the illusion and taking your power back. Don't wait for a perfect moment; your liberation begins when you choose a new perspective.

Reflection Prompt

Where am I giving my power away to fear — and what small shift could help me reclaim it?



Minor Arcana - 9 of Swords

Anxiety · Sleeplessness · Inner turmoil · Regret · Emotional overload

Astrological Correspondence

Mars in Gemini

Element: Air 🌬️

Core Message

When fear takes over the mind, perspective becomes distorted. The Nine of Swords calls attention to the mental spirals that rob us of peace — often fed by imagination more than fact. This is a reminder: You are not your worst thoughts.

Symbolism

A woman lies wide-eyed in bed, clutching her blanket as nine swords loom like prison bars in the foreground. Her tousled hair and expression of alarm capture the essence of restlessness and intrusive thoughts. The swords form a mental barrier, but not a physical one — emphasizing how much of this pain is internalized rather than imposed. The scene is stark and high-contrast, reflecting the intense clarity that anxiety can sometimes bring — but also how clarity isn't always truth.

Upright Meaning

This card often appears during moments of regret, overthinking, or emotional overwhelm. Nightmares, mental anguish, or self-criticism may be playing on repeat. It's a sign that you may need to pause, breathe, and reach for a more grounded truth. It's okay to ask for help.

Shadow / Reversed

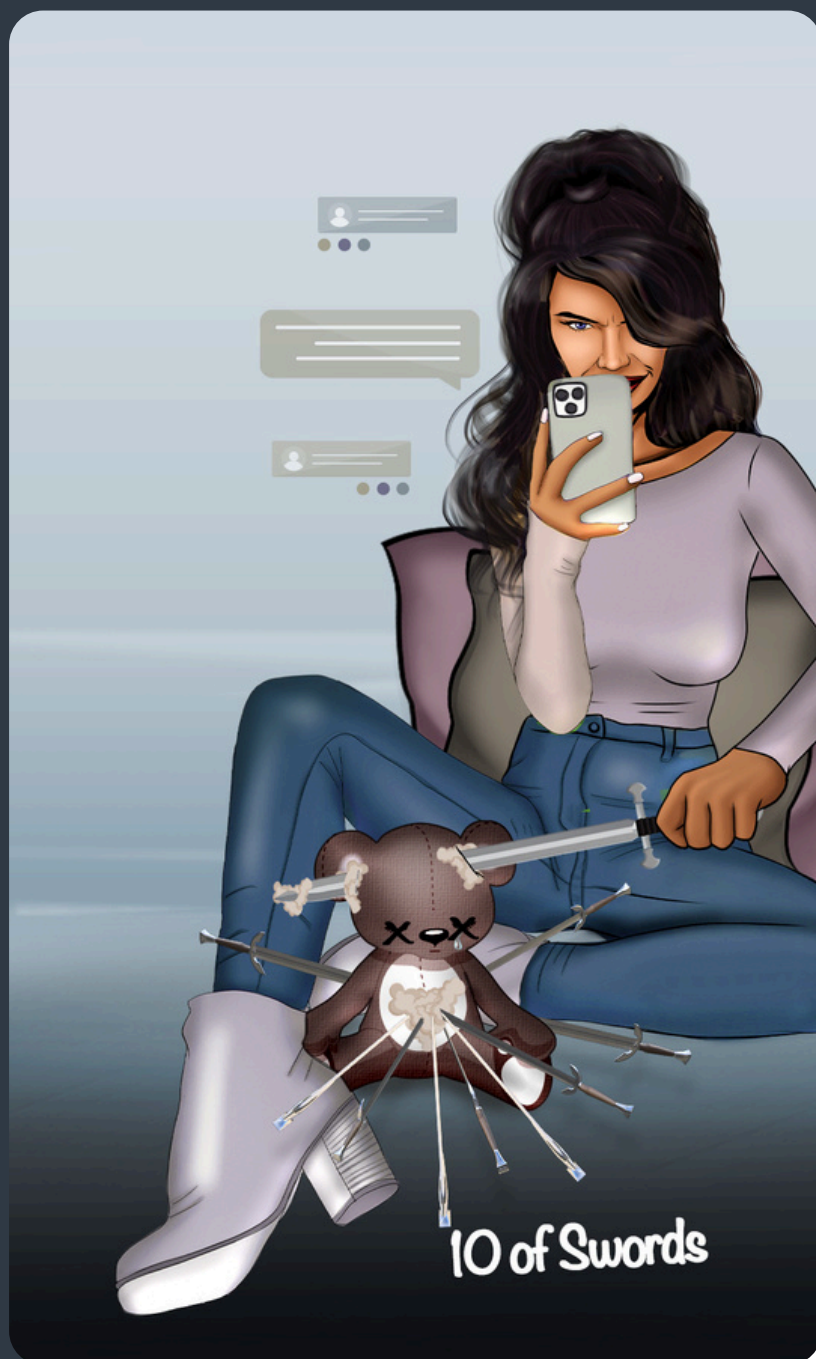
In reverse, the Nine of Swords can show a release from inner torment or a refusal to face what's causing distress. It may point to avoidance, repression, or the slow unraveling of an emotional knot. Healing begins when we name what hurts.

Reflection Prompt

What thoughts or fears keep looping in my mind — and what truth might soften their grip?

Affirmation

I am safe in this moment. I choose to witness my thoughts with compassion, not judgment.



Minor Arcana - 10 of Swords

Betrayal · Rock bottom · Finality · Collapse · Harsh truth

Astrological Correspondence

Sun in Gemini

Element: Air 🌬️

Core Message

The moment of devastation holds the seed of liberation. This card acknowledges what cannot be undone — but also reminds you that healing begins once you stop resisting the truth.

Symbolism

A smug figure casually snaps a photo while a plush teddy — pierced with ten swords — lies limp in her lap. It's a darkly modern image of cruelty masked as indifference, echoing themes of emotional sabotage, online humiliation, or inner self-sabotage. The glowing phone and floating comment bubbles represent the relentless intrusion of public judgment and the internal replay of pain. The teddy, symbol of innocence or childhood, bears the brunt — a visual metaphor for wounded vulnerability. The pale sky suggests emotional exhaustion, yet its openness hints at potential release once the pain is acknowledged.

Upright Meaning

The 10 of Swords signals a painful conclusion — perhaps betrayal, burnout, or harsh realization. Something has run its course. It's okay to grieve. But this card also assures you: the worst has passed. What's done is done. Now, there's only forward. Your recovery begins the moment you stop fighting what is.

Shadow / Reversed

Reversed, this card may suggest resisting an ending or staying in victimhood long after the wound has closed. It can also indicate private suffering, unspoken shame, or secret sabotage. Be gentle with yourself — and brave enough to rise.

Reflection Prompt

What painful truth am I finally ready to release — and who would I become if I did?

Affirmation

Even in endings, I choose compassion. I release what no longer serves my healing.



Court Cards - Page of Swords

Curiosity · Intelligence · Watchfulness · Communication · Mental energy

Astrological Correspondence

Mercury in Air Signs

Element: Air 🌬️

Core Message

The Page of Swords is a seeker of truth — ever curious, always watching. This card signals a fresh idea, a new question, or the urge to express your thoughts and gather intel.

Symbolism

A young person stands alert, holding a sword high with one hand while using spy glasses — tools of both observation and communication. Behind them, a giant eye peers through a window, suggesting insight, scrutiny, and awareness. Books lie open at their feet, a symbol of learning and mental preparedness. The backdrop is cool and neutral, highlighting a mood of sharp focus and mental readiness. This Page is the researcher, the spy, the student — endlessly inquisitive and always one step ahead.

Upright Meaning

The Page of Swords invites mental exploration. You're being called to ask questions, stay alert, and engage your intellect. A new idea or message may arrive — or perhaps it's time to express your truth. Embrace curiosity and be mindful with your words. Thoughtfulness now plants the seeds for clear communication later.

Shadow / Reversed

In shadow, this card warns of gossip, mental restlessness, or defensive communication. You may be overthinking or jumping to conclusions. Alternatively, you could be gathering information in secret. Watch for miscommunication and impulsive thoughts — not every idea needs to be voiced immediately.

Reflection Prompt

What truth am I seeking — and how can I engage with it thoughtfully and with integrity?

Affirmation

I welcome clarity and speak with awareness. My curiosity opens doors to truth and connection.



Court Cards - Knight of Swords

Purpose · Precision · Drive · Mission · Momentum

Astrological Correspondence

Air of Air

Element: Air 🌬️

Core Message

You're not just moving forward — you're being propelled by something beyond you. This card signals mission-fueled momentum. When the Knight of Swords arrives, it's go-time.

Symbolism

The Knight sprints forward with fierce resolve, sword pointed ahead, hair and clothing lifted by speed. But behind him — a ghostly white horse emerges from the mist. It is not a physical steed, but an ancestral force, a spirit-guide of courage, intellect, and vision. Crows streak alongside him, echoing intuition and air's domain. This isn't just action — it's divinely sanctioned movement. The horse represents something bigger: purpose, lineage, a whisper of destiny galloping just behind, reminding the Knight (and you) that you don't ride alone.

Upright Meaning

Fast movement, mental clarity, and the determination to act on your convictions. You may feel the call to speak up, initiate, or defend a truth. Trust your sharp mind and sense of purpose.

Shadow / Reversed

Recklessness, burnout, or charging ahead without insight. Check: are you being driven by inspiration — or chased by avoidance?

Reflection Prompt

What inner or unseen force is pushing me forward — and what would it mean to honor it consciously?

Affirmation

I ride with unseen allies. Their wisdom fuels my boldest steps.



Court Cards - Queen of Swords

Verbal Precision · Directness · Decisiveness · Fair · Mental Clarity

Astrological Correspondence

Libra ♎

Element: Air 🌬️

Core Message

Wisdom doesn't flinch. The Queen of Swords embodies a calm clarity, inviting you to lead with discernment and truth — even when it cuts through sentiment.

Symbolism

The Queen stands tall, robed in translucent layers of white and lavender, her bare feet grounded, her posture serene. She holds a sword lightly but decisively, a symbol of clear communication and unshakable integrity. The throne behind her remains empty — a subtle invitation that true authority doesn't need to be performed. Her crown glows softly, denoting earned wisdom, not entitlement. Her expression is warm, yet firm — she sees clearly and speaks from both experience and intellect. In this image, she is not cold; she's lucid. She knows when to offer kindness and when to cut through illusions.

Upright Meaning

The Queen of Swords asks you to rely on intellect, logic, and clarity in your current situation. It's a time to tell the truth — especially to yourself. Step into self-leadership, using discernment, boundaries, and honesty as your tools. This card encourages self-respect, especially in moments when emotions threaten to cloud judgment.

Shadow / Reversed

In shadow, this Queen may represent isolation, cutting words, or an overly critical stance. Her gift of discernment can become judgment when rooted in fear. If this resonates, ask: Am I protecting my heart — or walling it off?

Reflection Prompt

Where in my life can I practice both compassion and truth-telling — without compromising either?

Affirmation

I lead with clarity, speak with truth, and honor both heart and mind.



Court Cards - King of Swords

Wisdom · Authority · Integrity · Clarity · Mental Discipline

Astrological Correspondence

Aquarius ♒

Element: Air ☁️

Core Message

The King of Swords invites you to rise above the noise and lead from a place of wisdom and fairness. When emotions cloud a situation, this card urges you to step back, observe, and act from truth and intellect.

Symbolism

The King stands poised in a tailored suit, embodying quiet strength and sharp discernment. His sword is grounded but crowned, resting beside a single black butterfly — a symbol of transformation and clear vision born of darkness. Birds line the wires behind him, like advisors or witnesses, reminding us that leadership isn't isolation — it's listening, perceiving, and choosing with care. His gaze cuts sideways, aware of what others might miss.

Upright Meaning

You may be called to take the lead, make a fair decision, or speak truth with confidence. This card encourages clear communication, high standards, and strategic thinking. Approach matters with discernment — your clarity will serve everyone involved.

Shadow / Reversed

In reverse, the King of Swords can signal manipulation, cold detachment, or a misuse of intellect for control. Beware of overly rigid thinking or using logic to justify unkindness. Reconnect with integrity before making final judgments.

Reflection Prompt

Where in my life can I lead with clarity and fairness — without sacrificing compassion?

Affirmation

I lead with wisdom, speak with truth, and act with integrity.

Minor Arcana - Pentacles

Journey





Minor Arcana - Ace of Pentacles

Victory · Recognition · Celebration · Confidence · Achievement

Astrological Correspondence

Element: Earth ♁

Core Message

Every dream begins with a seed. The Ace of Pentacles marks the fertile ground where ideas take root and real-world possibilities begin to bloom.

Symbolism

A pair of cupped hands emerges from soft clouds, holding fresh soil from which a golden pentacle rises. At the center, an intricate tree design balances bare branches and lush greenery — a visual echo of cycles, investment, and growth. A bee, guardian of abundance and hard work, hovers above, reminding us that what's sweet must be earned. The overall tone is gentle but potent, grounded yet magical. The imagery evokes both nurture and manifestation.

Upright Meaning

This card brings promising beginnings in areas of stability — finances, health, work, or home. A new job, a healthy habit, or a stable relationship may be forming. Stay present and plant with it. There may be missed opportunities, procrastination, or fears of inadequacy holding you back. Are you resisting abundance or failing to believe in your worth? Reconnecting to self-trust can help you re-engage with what's trying to take root.

Reflection Prompt

What seed am I being invited to plant — and what does it need to grow?

Affirmation

I honor new beginnings and trust the path of slow, steady growth.



Minor Arcana - 2 of Pentacles

Balance · Flexibility · Prioritization · Adaptability · Flow

Astrological Correspondence

Jupiter in Capricorn

Element: Earth ♁

Core Message

Life is rarely about either/or — it's often a dance between both/and. The 2 of Pentacles invites you to cultivate presence within motion, finding balance even as things shift. Harmony doesn't always mean stillness; sometimes it means learning to move with grace amid change.

Symbolism

A woman sits cross-legged atop a wild, earthy cliff — her posture grounded in meditation, yet her entire being in active alignment. Two glowing pentacles float above her palms, connected by an infinity-like ribbon — symbolizing the eternal ebbs and flows of balance. Her long, flowing hair stretches upward, alive with butterflies — symbols of transformation, presence, and adaptability. Though suspended between stability and change, she radiates inner balance. The scene feels magical yet rooted, reflecting the practical spirituality required to hold multiple truths at once.

Upright Meaning

This card suggests you're managing multiple responsibilities or navigating choices. It encourages time management, grounded flexibility, and trusting your rhythm. You may be in a phase of juggling resources, tasks, or emotions — but you're more capable than you think. Stay mindful and responsive rather than reactive.

Shadow / Reversed

When reversed, it can indicate overwhelm, imbalance, or misaligned priorities. You may feel you're dropping balls or spinning in uncertainty. This is a nudge to pause and reassess — what truly needs your energy? What can wait or be delegated?

Reflection Prompt

How can I stay centered while holding multiple moving parts — and where do I need to simplify?

Affirmation

I create harmony by moving with life, not against it.



Minor Arcana - 3 of Pentacles

Collaboration · Teamwork · Skill · Contribution · Purpose

Astrological Correspondence

Mars in Capricorn

Element: Earth ♃

Core Message

The 3 of Pentacles reminds us that our visions become real through connection. This card celebrates the beauty of shared effort and the synergy of combining strengths. Every masterpiece begins with cooperation, communication, and the humility to listen and be heard.

Symbolism

A family works in harmony — the father stands on a ladder preparing to hang glowing pentacles, while the mother and child collaborate to string them together. The background features a tree in the shape of a flowing “3,” its roots and branches symbolizing generational connection and growth. The figures reflect a joyful exchange of ideas, trust, and mutual investment in something meaningful. Everyone plays a role, no matter their age or expertise — and together, their collective light grows stronger.

Upright Meaning

This card suggests progress through cooperation and grounded teamwork. Whether in work, family, or community, your contributions matter — and so does how you receive others'. Acknowledge and lean into each person's unique value. You're building something of lasting worth.

Shadow / Reversed

When reversed, the 3 of Pentacles can reveal imbalance — like working in isolation, miscommunication, or a lack of appreciation. Are you feeling unseen or unsupported? Or perhaps you're not giving others space to contribute? A shared goal requires shared ownership.

Reflection Prompt

Where am I being called to collaborate — and how can I strengthen that connection with trust and clarity?

Affirmation

I grow stronger through shared purpose and open-hearted collaboration.



Minor Arcana - 4 of Pentacles

Security · Control · Boundaries · Possession · Self-worth

Astrological Correspondence

Sun in Capricorn

Element: Earth ♁

Core Message

The 4 of Pentacles asks: what are you holding on to — and why? This card reflects our relationship to safety and scarcity, encouraging discernment between what nurtures stability and what feeds fear. Sometimes protecting what's ours is wise; other times, it can limit growth.

Symbolism

A woman stands quietly near a city bench, arms wrapped tightly around four gold pentacles. Her expression is soft but guarded, as if savoring something she's not ready to share. The background is filled with light, but she's turned inward — focused solely on what's in her grasp. This image suggests a tender attachment to security, yet it also raises the question: what happens when we cling too tightly?

Upright Meaning

This card represents a desire to protect what you've worked for — whether financial, emotional, or energetic. You may be creating healthy boundaries or seeking solid ground. Just remember: true abundance flows. Holding on too tightly might prevent new blessings from entering.

Shadow / Reversed

In reversal, the 4 of Pentacles warns of fear-based control, possessiveness, or a scarcity mindset. You might be resisting change or keeping others at a distance. Trusting yourself — and life — is key to moving forward with grace.

Reflection Prompt

Where in my life am I gripping too tightly — and what might shift if I softened my hold?

Affirmation

I am secure in who I am and open to the flow of abundance.



Minor Arcana - 5 of Pentacles

Hardship · Isolation · Resilience · Support · Survival

Astrological Correspondence

Mercury in Taurus

Element: Earth ♁

Core Message

The 5 of Pentacles reminds us that while material challenges can be deeply painful, they do not define our worth or future. Even in our hardest seasons, connection and hope can be lifelines. You are not alone — and this moment will pass.

Symbolism

A man carries a young child on his shoulders, walking with quiet determination. He uses a cane, and his expression is tired but strong. Behind them, five pentacles float in formation, like a distant constellation — a reminder of both spiritual support and distant potential. The subdued background reflects a feeling of isolation, but their closeness and forward motion reveal enduring love and willpower.

Upright Meaning

This card speaks to loss — financial struggle, poor health, or emotional isolation. Yet it also signals unseen help and resilience. If you're facing difficulty, reach out. Vulnerability opens the door to grace. Focus on the path ahead, not the weight of the past.

Shadow / Reversed

In reversal, the 5 of Pentacles can point to internalized shame, rejection, or a belief that you must endure alone. You may be isolating yourself when support is available. Begin by offering yourself compassion; then consider what resources you've overlooked.

Reflection Prompt

Where might I be carrying too much alone — and who or what could lighten my load?

Affirmation

Even in my struggles, I am not alone. I welcome support and remain open to healing.



Minor Arcana - 6 of Pentacles

Generosity · Reciprocity · Kindness · Exchange · Support

Astrological Correspondence

Moon in Taurus

Element: Earth ♁

Core Message

The 6 of Pentacles speaks to the dynamic flow of giving and receiving. Whether you're offering help or accepting it, this card honors the sacred exchange that builds community and balance. Mutual generosity is a form of abundance.

Symbolism

A joyful young person sits cross-legged, mid-gift, distributing pentacles to open hands below. Their relaxed posture and soft smile reflect contentment and ease in the act of giving. The coins appear to float effortlessly, symbolizing the natural cycle of generosity. There's no tension — just open-hearted sharing and a recognition of need met with kindness.

Upright Meaning

This card arrives when support, charity, or generosity is relevant. You may be in a position to give, or finally open to receiving. It's a reminder that giving does not diminish you, and receiving does not shame you. Whether financial, emotional, or energetic, help is a gift in both directions.

Shadow / Reversed

Reversed, the 6 of Pentacles may indicate imbalance — giving with strings attached, overgiving from depletion, or struggling to receive. Check your motives. Are you giving freely or to control? Are you open to receiving, or clinging to self-sufficiency out of pride?

Reflection Prompt

How do I feel when I give freely — and when I accept help?

Affirmation

I honor the cycle of generosity by giving and receiving with grace.



Minor Arcana - 7 of Pentacles

Patience · Assessment · Investment · Pause · Growth

Astrological Correspondence

Saturn in Taurus
Element: Earth ♁

Core Message

The 7 of Pentacles reminds you that meaningful growth requires patience and care. Not all rewards are immediate. Sometimes the best thing you can do is pause, reassess, and trust in what you've planted.

Symbolism

A woman rests her chin on her hand, her expression thoughtful as she gazes at a partially grown plant emerging from the soil. A large pocket watch peeks out of the rich soil — time is clearly a factor here. Beneath the earth, a vast network of golden roots winds around seven pentacles, representing investments taking root. Her sunglasses suggest shielding or introspection — she's evaluating what's unfolding without reacting too quickly.

Upright Meaning

This card signals a moment of evaluation. You've put in time, effort, or resources — now is the space between effort and outcome. Are you seeing the progress you hoped for? What needs more time, and what might need adjustment? Progress is happening, even if it's unseen.

Shadow / Reversed

In reverse, the 7 of Pentacles can suggest impatience, burnout, or discouragement. Maybe you're doubting your work, or expecting results too soon. It might be time to refine your plan, recommit, or redirect your energy altogether.

Reflection Prompt

Where in my life am I being asked to trust the process, even without guarantees?

Affirmation

I nurture what I plant and honor the time it takes to grow.



Minor Arcana - 8 of Pentacles

Skill · Practice · Focus · Mastery · Commitment

Astrological Correspondence

Sun in Virgo

Element: Earth ♃

Core Message

Dedication shapes destiny. The 8 of Pentacles reminds us that lasting achievement is the result of care, repetition, and wholehearted attention.

Symbolism

A woman sits cross-legged on the floor with a digital tablet, creating a mandala that glows with golden energy. Around her, seven other mandalas — each unique and detailed — hover in a semicircle, representing the refinement of craft through repetition. Her focus is calm and steady, her environment soft and grounded. Each pentacle in the mandalas symbolizes a different stage in the creative journey — some more elaborate, some simpler — but all part of a growing body of work.

Upright Meaning

This card speaks to the power of persistence and devotion to your craft or purpose. You may be honing a skill, building a business, or nurturing something over time. Progress may feel slow, but it is steady. Trust the process and keep showing up.

Shadow / Reversed

When reversed, the 8 of Pentacles may point to burnout, boredom, or perfectionism. Are you overworking or stuck in a loop of self-criticism? It may be time to reconnect with your “why,” or allow space for imperfection.

Reflection Prompt

What am I committed to growing — and how can I bring more joy or intention into the process?

Affirmation

Each small step I take builds the foundation of something beautiful.



Minor Arcana - 9 of Pentacles

Independence · Joy · Fulfillment · Self-Worth · Luxury

Astrological Correspondence

Venus in Virgo

Element: Earth ♃

Core Message

You've earned this. The 9 of Pentacles celebrates self-made joy and the beauty of feeling content and free in your own skin.

Symbolism

A carefree woman dances to her own rhythm, headphones on, eyes closed in delight. Her smile beams with self-satisfaction. Surrounding her are golden vinyl records marked with pentacles — a visual symphony of abundance, creativity, and personal achievement. Music notes flutter around her like butterflies, enhancing the mood of delight and self-expression. She is dressed stylishly and comfortably, radiating the confidence of someone who enjoys what they've created for themselves.

Upright Meaning

This card highlights a moment of reward, pleasure, or success earned through your own efforts. You may be experiencing financial ease, creative fulfillment, or emotional freedom. It's a reminder to savor the sweetness of independence and recognize your growth.

Shadow / Reversed

In the shadow, the 9 of Pentacles can reveal disconnection from your accomplishments — perhaps struggling to enjoy what you've worked for, or feeling isolated in your independence. It can also reflect issues around self-worth or overindulgence. Reground in your values and reconnect to joy without judgment.

Reflection Prompt

What have I created or cultivated that brings me a sense of freedom — and am I allowing myself to fully enjoy it?

Affirmation

I celebrate the richness of my life and the beauty I've created on my own terms.



Minor Arcana - 10 of Pentacles

Legacy · Home · Security · Fulfillment · Generational Wealth

Astrological Correspondence

Mercury in Virgo

Element: Earth ♁

Core Message

The 10 of Pentacles honors the long game — the rewards of devotion, patience, and building something that lasts beyond your lifetime.

Symbolism

Golden pentacles cascade from the sky toward a stately, welcoming home. In the foreground are potted plants, fresh-picked flowers, a vintage milk canister, and a basket of apples — symbols of nourishment, care, and continuity. Everything here speaks to cultivated abundance. A generational home, rich with history and love, its walls holding the echoes of laughter, stories, and shared meals. Though the figures are unseen, their presence is deeply felt — a family protected within, living out the quiet rewards of devotion and shared purpose. The architecture is classic, the earth well-tended, hinting at generational roots and deep foundations.

Upright Meaning

This card represents material and emotional abundance, often in the context of family, home, or long-term success. It may signify a milestone reached — building a business, buying a home, or creating a life that supports not just you, but those you care about. There is pride here, but it's quiet — rooted in effort and love.

Shadow / Reversed

In reversal, the 10 of Pentacles can reflect fears about financial instability, legacy, or family dynamics. It may suggest clinging too tightly to tradition or resisting necessary change. Consider where you might be sacrificing joy for the sake of permanence.

Reflection Prompt

What am I building that will outlast me — and does it align with my true values?

Affirmation

I create a life of purpose, rooted in love and built to nourish generations to come.



Court Cards - Page of Pentacles

Ambition · Study · New opportunities · Diligence · Consistency · Grounded · Goal-oriented

Astrological Correspondence

Mercury in Virgo

Element: Earth ♁

Core Message

The spark of new potential arises when you commit to your growth. This card is an invitation to ground your dreams through steady, thoughtful action.

Symbolism

A young woman sits comfortably on the earth, legs crossed, with a single pentacle resting gently on her knee. Her gaze is soft but focused, full of possibility. The landscape behind her is vast and natural — open mountains, grounded tones — symbolizing the wide terrain of learning ahead. The pentacle glows subtly, representing an idea or opportunity that is still taking shape. Her posture is relaxed yet intentional, embodying a balance between curiosity and readiness. This card holds the energy of someone who is listening for their calling — not yet experienced, but deeply willing.

Upright Meaning

The Page of Pentacles marks a time of new beginnings related to learning, career, or self-worth. You may be embarking on a new course of study, laying the groundwork for a project, or setting intentions for a healthier relationship with your body or money. This card encourages patience, humility, and devotion to the process. Progress may be slow, but it is real.

Shadow / Reversed

When reversed, this card can suggest immaturity, procrastination, or a lack of follow-through. It may also reflect fear of starting something new or undervaluing your abilities. Remember: mastery begins with the willingness to be a beginner.

Reflection Prompt

Where am I being invited to start fresh — and how can I support myself in learning as I go?

Affirmation

I honor the beginning. I take grounded steps toward the life I am building.



Court Cards - Knight of Pentacles

Dedication · Responsibility · Steady Progress · Patience · Trustworthiness

Astrological Correspondence

Virgo ♍

Element: Earth ♁

Core Message

The Knight of Pentacles reminds us that true progress is made through steady, intentional effort. This card celebrates reliability and the grounded courage it takes to show up consistently — even when the journey feels long or uneventful.

Symbolism

A young man sits calmly beside a fence, holding a pentacle close. He's paused for a moment of reflection, his posture relaxed yet purposeful. A loyal horse gazes at him with quiet understanding, while a bag of apples — symbolic of harvest and reward — rests at his feet. The simplicity of the landscape emphasizes stillness and discipline. There's no rush here, only presence and persistence.

Upright Meaning

This card encourages you to honor the work you've committed to. Whether you're building something physical, financial, or emotional, progress will come through consistent action and patience. The Knight of Pentacles values quality over speed — reminding you that slow growth is still growth.

Shadow / Reversed

In reverse, this card may suggest stagnation, stubbornness, or an overattachment to routine. Are you doing something just because it's familiar? Or neglecting creativity and adaptability for the sake of safety? A gentle recalibration may be needed.

Reflection Prompt

Where am I being called to show up more consistently — and what would that kind of devotion look like in my daily life?

Affirmation

I move forward with care, knowing each small step brings me closer to lasting success.



Court Cards - Queen of Pentacles

Nurturing · Stability · Abundance · Practicality · Self-worth

Astrological Correspondence

Capricorn ♑

Element: Earth ♁

Core Message

Rooted in the real and the sacred, the Queen of Pentacles embodies balanced care — for self, others, and the world she inhabits. This card invites you to reconnect with your inner resourcefulness and to trust that what you tend to with love will flourish.

Symbolism

The Queen sits comfortably in a plush armchair, cozy and grounded, her pentacle held close to her center. A crown rests lightly on her curls — a symbol of quiet authority. The warm textures, soft blankets, and greenery nearby reflect a life cultivated through mindful presence. She is secure not just in wealth, but in wisdom — knowing the value of time, energy, and love as currency.

Upright Meaning

This card speaks to the beauty of creating a life that sustains and supports you. It's about tending to your responsibilities while still nurturing your own spirit. The Queen of Pentacles suggests material success, home harmony, and strong caretaking energy — but also reminds you not to abandon your own well-being in the process.

Shadow / Reversed

When reversed, the Queen may indicate burnout, self-neglect, or overextension. Are you caring for everyone but yourself? Or are you overly focused on appearances, neglecting emotional needs? Real wealth begins within.

Reflection Prompt

Where in my life can I offer more grounded care — to myself, to my surroundings, or to those I love?

Affirmation

I nourish the life I've created, knowing that my care is a powerful form of abundance.



Court Cards - King of Pentacles

Success · Reliability · Leadership · Mastery · Provision

Astrological Correspondence

Taurus ♉

Element: Earth ♁

Core Message

Security isn't just about wealth — it's about wisdom, structure, and responsibility. The King of Pentacles reminds us that true abundance is cultivated over time, with intention, care, and vision.

Symbolism

The King sits at his desk, focused and at ease, surrounded by books and tools of his trade. A glowing pentacle rises behind him like a seal of earned authority. His presence is calm and competent — he's a provider, not only of material goods, but of guidance, clarity, and long-term stability. The subtle crown embedded in the coin reflects sovereignty rooted in earned respect.

Upright Meaning

This card signals financial mastery, grounded leadership, and commitment to legacy. Whether you're managing a household or an enterprise, you're being called to lead with integrity and long-term thinking. The King of Pentacles also suggests mentorship — are you ready to guide others or be guided by someone seasoned?

Shadow / Reversed

When reversed, this King may indicate rigidity, workaholism, or an unhealthy attachment to status and control. You may be stuck in a scarcity mindset or ignoring the emotional side of leadership. Reconnect with your values, not just your goals.

Reflection Prompt

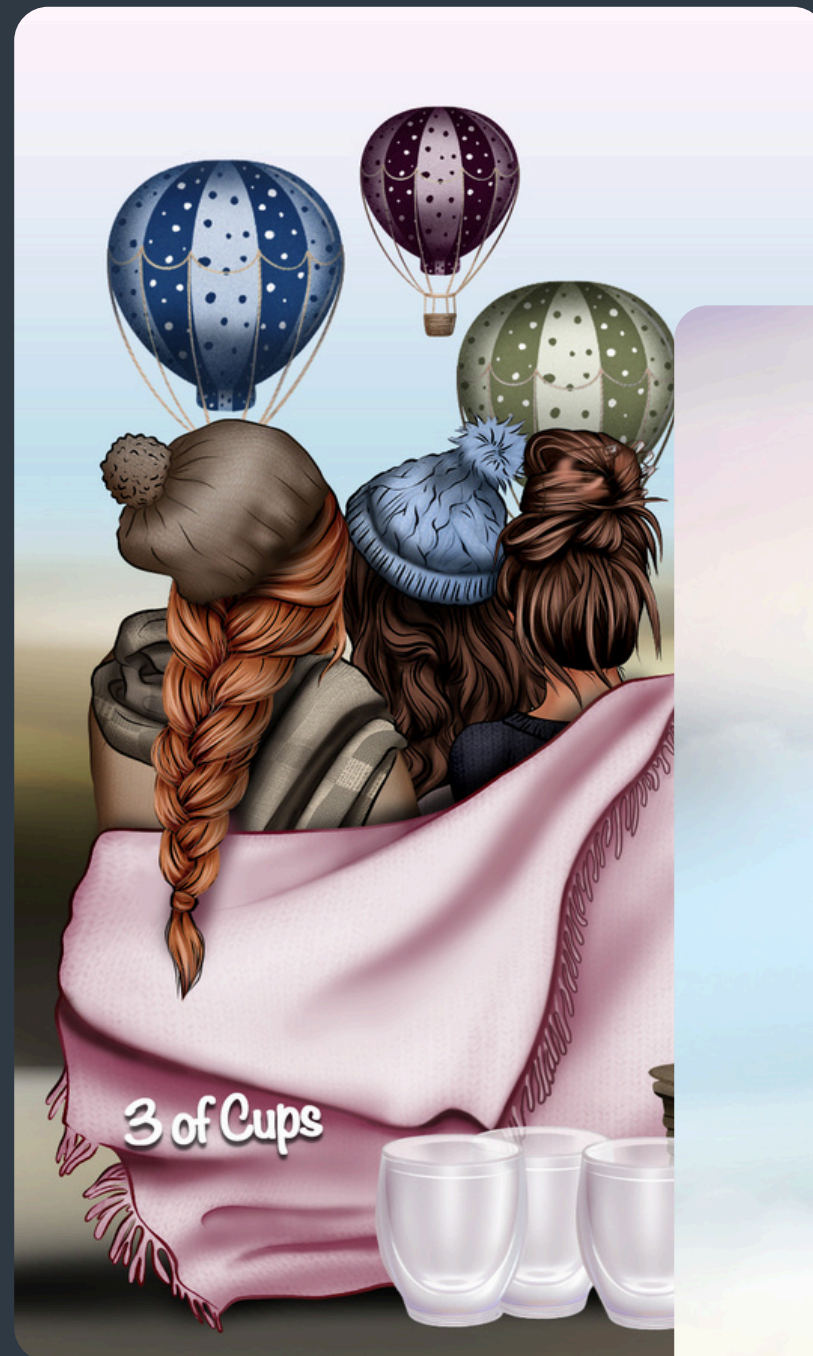
How can I lead from a place of grounded generosity — and what structures need refining to support my success?

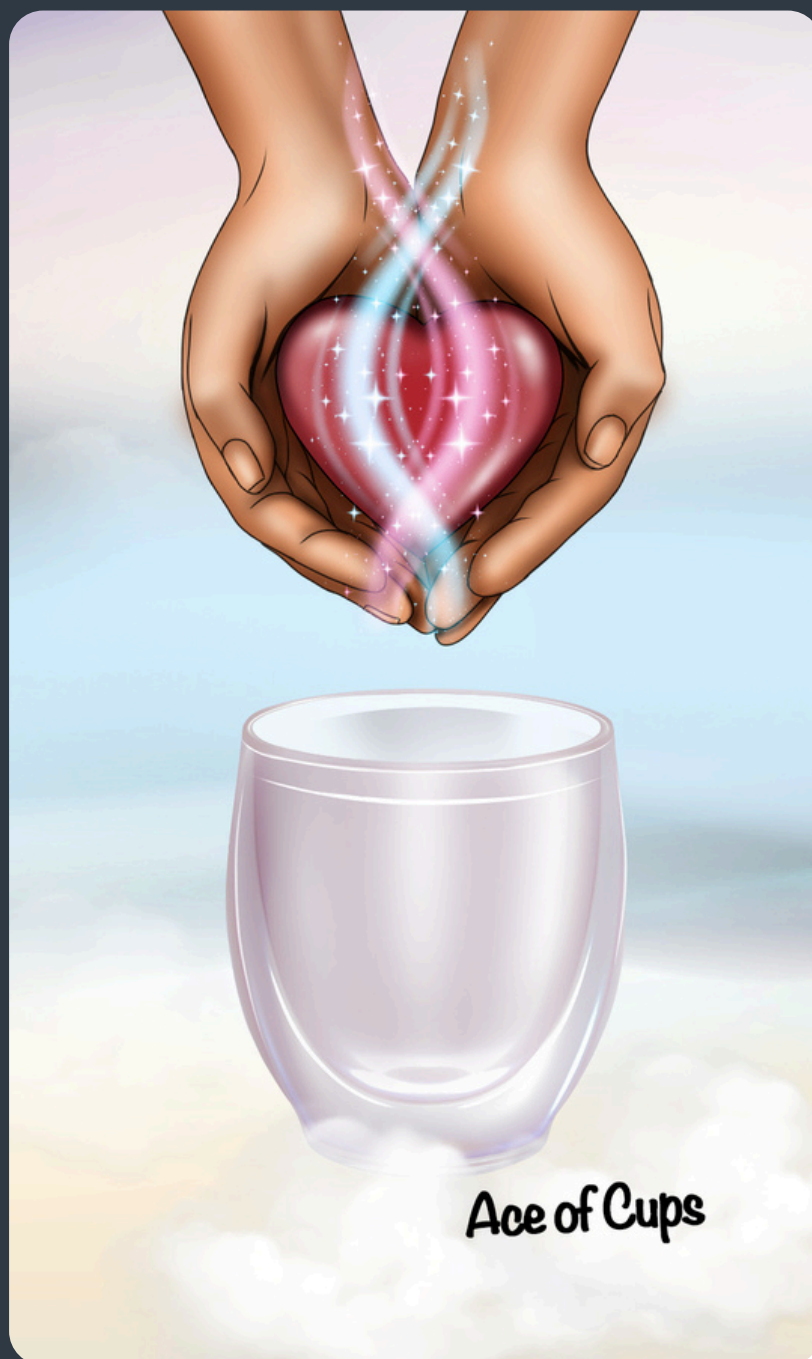
Affirmation

I lead with wisdom, create with care, and trust that what I build will endure.

Journey

Minor Arcana - Cups





Minor Arcana - Ace of Cups

New beginnings · Emotional awakening · Receptivity · Overflowing love · Spiritual connection

Astrological Correspondence

Water Signs (Cancer, Scorpio, Pisces)

Element: Water 💧

Core Message

A new wellspring of love and emotional clarity is available—whether through relationships, healing, or a renewed connection to yourself.

Symbolism

The cup hovers within a soft ring of clouds, still and receptive. In the foreground, a pair of hands gently cradles a vivid red heart — full, rounded, and oh, so tangible. The heart radiates quiet power, and from it flows delicate tendrils of etherial magic, streaming toward the cup as if something sacred is being transferred. This moment captures the threshold between feeling and expression — the pause before the heart is poured into something new. The imagery speaks to vulnerability, readiness, and the sacred act of opening oneself to emotional truth.

Upright Meaning

The Ace of Cups signals the beginning of emotional renewal. It may mark the start of a loving relationship, a deeper intimacy with someone close, or an awakening of compassion within. This card encourages you to open your heart and allow joy, vulnerability, and healing to flow in. It may also point to heightened intuition or spiritual emotional release.

Shadow / Reversed

Are you holding back your feelings or neglecting your emotional needs? This card reversed may suggest emotional suppression, burnout, or resistance to self-love. Allow space for gentleness.

Reflection Prompt

Where in your life are you ready to receive love or offer it more freely?

Affirmation

"My heart is open. I am worthy of love, joy, and deep connection."



Minor Arcana - 2 of Cups

Union · Partnership · Emotional balance · Mutual respect · Deep connection

Astrological Correspondence

Venus in Cancer

Element: Water 💧

Core Message

This card reflects the beauty of genuine connection — a meeting of hearts, minds, and souls where both are seen and held in equal measure.

Symbolism

Two hands extend toward each other in a gentle exchange — their fingers delicately entwined in a lingering touch that suggests both connection and promise. Below, two cups, veiled in soft coastal mist, as if resting on the edge of a timeless sea. Swirls of energy rise between them, hinting at the quiet magic that flows between two souls willing to meet one another openly. This image holds a moment of intimate balance, where something beautiful begins or deepens through presence, trust, and mutual care.

Upright Meaning

The Two of Cups speaks to connection — romantic or otherwise — rooted in honesty, mutual care, and emotional openness. It may signify a new or deepening relationship, a moment of forgiveness, or a shared vision forming between two people. The card reminds us that love, in its healthiest form, is not about possession but presence — and that healing often begins when we allow ourselves to truly be seen.

Shadow / Reversed

In reversal, this card may highlight imbalances in emotional exchange, misunderstandings, or fear of intimacy. It may also suggest the need to repair trust or to examine whether both people are meeting each other fully.

Reflection Prompt

Where in your life are you being invited to offer or receive emotional truth?

Affirmation

I honor the beauty of mutual connection. I meet others with openness, presence, and heart.



Minor Arcana - 3 of Cups

Celebration · Friendship · Community · Joy · Shared success

Astrological Correspondence

Mercury in Cancer

Element: Water 💧

Core Message

True joy is magnified when shared. This card reflects the power of friendship, collective energy, and meaningful connection.

Symbolism

Three friends are huddled close beneath a shared blanket, their posture intimate and relaxed as they gaze toward a sky filled with colorful hot air balloons. The image evokes a moment of quiet wonder, joy, and the comfort of being seen and supported. The rising balloons symbolize hope, transformation, and the lightness that comes from deep connection. Their vivid colors reflect the beauty of diversity — different perspectives, stories, and energies coming together in harmony. Behind the figures, three cups mirror their formation, standing tall as symbols of emotional abundance born through unity and celebration.

Upright Meaning

The Three of Cups marks a time of joy, shared success, and community support. This card signifies the magic that unfolds when people come together with open hearts. It may point to a celebration, a reunion, or a meaningful milestone achieved with others. It's also a reminder to pause and appreciate the people who lift you up — and to celebrate both the moment and the bond.

Shadow / Reversed

In reversal, this card may suggest feeling left out, emotional disconnection, or disharmony in a group. It can also speak to overindulgence or losing yourself in the collective at the cost of your own truth. A gentle reevaluation of where and with whom you feel most aligned may be needed.

Reflection Prompt

What relationships in your life bring you the most joy and authenticity — and how do you celebrate those bonds?

Affirmation

I am surrounded by love, support, and joyful connection. Together, we rise.



Minor Arcana - 4 of Cups

Apathy · Disconnection · Missed opportunities · Reflection · Inner unrest

Astrological Correspondence

Moon in Cancer

Element: Water 💧

Core Message

Emotional clarity arises when we pause to notice what's truly being offered. This card invites contemplation, gentle curiosity, and openness to what lies just beyond your current focus.

Symbolism

A young woman stands with arms crossed, eyes downcast, seemingly unaware of the luminous cup being offered to her from a clouded hand emerging from above. Her body language suggests withdrawal or deep introspection, as three cups rest at her feet — symbols of past emotional experiences. The scene is quiet and soft, with muted colors and open space, reflecting a liminal moment between what is and what could be. The hovering cup in the sky represents an unseen gift — a new emotional opportunity or insight awaiting acknowledgment. The rocky terrain hints at stagnation or emotional fatigue, while the clear light suggests that perspective is key to shift.

Upright Meaning

The Four of Cups appears during times of emotional reevaluation. You may feel uninspired, disengaged, or uncertain about what's next. This card invites you to slow down, look inward, and ask: what am I not seeing? A subtle offering — a new idea, relationship, or inner truth — may be just out of view. You don't have to act immediately, but staying open will help you reconnect with your heart's deeper desires.

Shadow / Reversed

When reversed, this card can point to persistent dissatisfaction, cynicism, or emotional numbness. It may also suggest you've been turning away from opportunities due to fear, fatigue, or doubt. There's nothing wrong with needing a break — but eventually, you'll be called to reengage with the present moment and what it's offering.

Reflection Prompt

What emotional gifts or invitations might I be overlooking — and what would it take to receive them with an open heart?

Affirmation

I am open to the quiet gifts life offers me, even when they arrive in unexpected ways.



Minor Arcana - 5 of Cups

Loss · Regret · Disappointment · Healing · Perspective shift

Astrological Correspondence

Mars in Scorpio

Element: Water 💧

Core Message

Loss can shape us, but it doesn't have to define us. This card invites reflection, release, and the courage to face forward.

Symbolism

A figure stands on a quiet beach, hands covering their face, overwhelmed by emotion. Three cups have fallen before them, their contents spilled near an old trunk — a visual echo of loss, disappointment, or emotional overwhelm. Yet two upright cups remain behind the trunk, still full — a quiet reminder of what endures. The ocean in the background reflects emotional depth and the waves of healing that come in their own time. Seagulls glide overhead, symbols of perspective, transition, and the freedom found in letting go.

Upright Meaning

The Five of Cups acknowledges grief, regret, or disillusionment. It may represent a moment where something valuable feels lost — a relationship, an opportunity, or a hope. But this card gently redirects your gaze to what still remains. Healing begins when you honor your feelings without becoming trapped in them. This is a time to process what hurts — and begin to reengage with what still holds meaning.

Shadow / Reversed

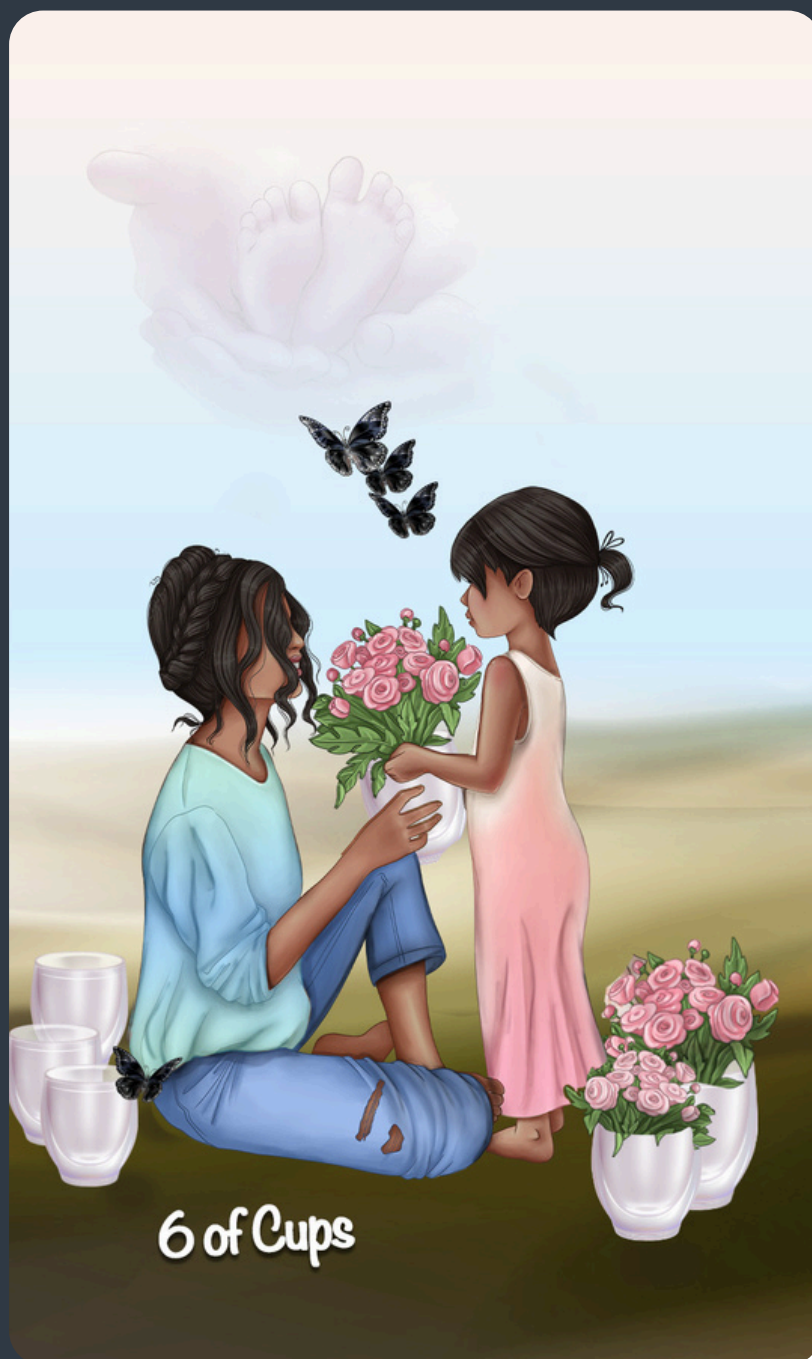
Reversed, this card can reflect avoidance of emotional pain or difficulty accepting what's passed. It may also indicate that healing has already begun, and it's time to look forward. Be mindful of lingering too long in sorrow — or rushing too fast past it. Either way, this is a card of eventual recovery and emotional resilience.

Reflection Prompt

What am I still holding onto — and what might I gain by releasing it?

Affirmation

I honor what I've lost, and I open to what remains. Healing begins now.



Minor Arcana - 6 of Cups

Nostalgia · Innocence · Generosity · Reconnection · Inner child

Astrological Correspondence

Sun in Scorpio

Element: Water 💧

Core Message

True connection transcends time. This card invites you to honor the past, cherish the present, and embrace the sweetness of sincere exchange.

Symbolism

A young girl gently offers a bouquet of pink roses to a seated woman, evoking a sense of heartfelt simplicity and timeless love. Their eye contact speaks volumes — a bond of innocence, trust, and emotional presence. Behind them, ghostlike hands cradle a baby's feet in the sky, a spiritual nod to protection, memory, and the sacredness of early bonds. Dark butterflies float above, symbolizing transformation and the soul's journey through cycles of life. Six cups surround the scene, brimming with roses — reminders that even in the present, echoes of love and joy from the past can still bloom.

Upright Meaning

The Six of Cups often signals a return to joy through nostalgia, reconnection, or generosity. It may suggest revisiting memories, people, or experiences that once brought comfort or healing. This card invites you to receive — or offer — kindness from a place of sincerity. It's a reminder that emotional safety often begins in the simplest moments of warmth.

Shadow / Reversed

In reversal, this card may reflect getting stuck in the past or idealizing it in ways that prevent forward movement. It may also point to childhood wounds seeking resolution. Healing may lie not in recreating what was, but in recognizing how far you've come.

Reflection Prompt

What memory or past connection still lives gently within you — and how might it guide or comfort you now?

Affirmation

I honor my past with love and gratitude. I welcome joy wherever it finds me.



Minor Arcana - 7 of Cups

Choices · Illusion · Imagination · Temptation · Fantasy

Astrological Correspondence

Venus in Scorpio

Element: Water 💧

Core Message

The 7 of Cups invites you to explore the vast landscape of your imagination, where dreams and desires intertwine. This card reflects the power of choice but cautions against the haze of illusion, urging you to discern reality from fantasy.

Symbolism

A figure sits in contemplation, surrounded by seven glowing cups, each revealing a distinct symbol. A dove hovers above, symbolizing hope and spiritual insight, while a snake coiled in one cup hints at wisdom or hidden challenges. A cup with blooming flowers and a pocket watch reflects the fleeting nature of time and beauty, while chocolates and a broken heart offer the allure of pleasure and the sting of loss. Mushrooms and a spider emerge from another, evoking mystery and the need for caution. The scene, set against a soft sky, captures a moment of introspection amid a sea of possibilities.

Upright Meaning

The 7 of Cups heralds a time of dreaming big and exploring options. It signifies a period where your imagination runs wild, presenting opportunities to shape your future. However, it also warns of temptation and illusion—some choices may dazzle but lead astray. Pause to evaluate which visions align with your truth, blending creativity with clarity to forge a meaningful path.

Shadow / Reversed

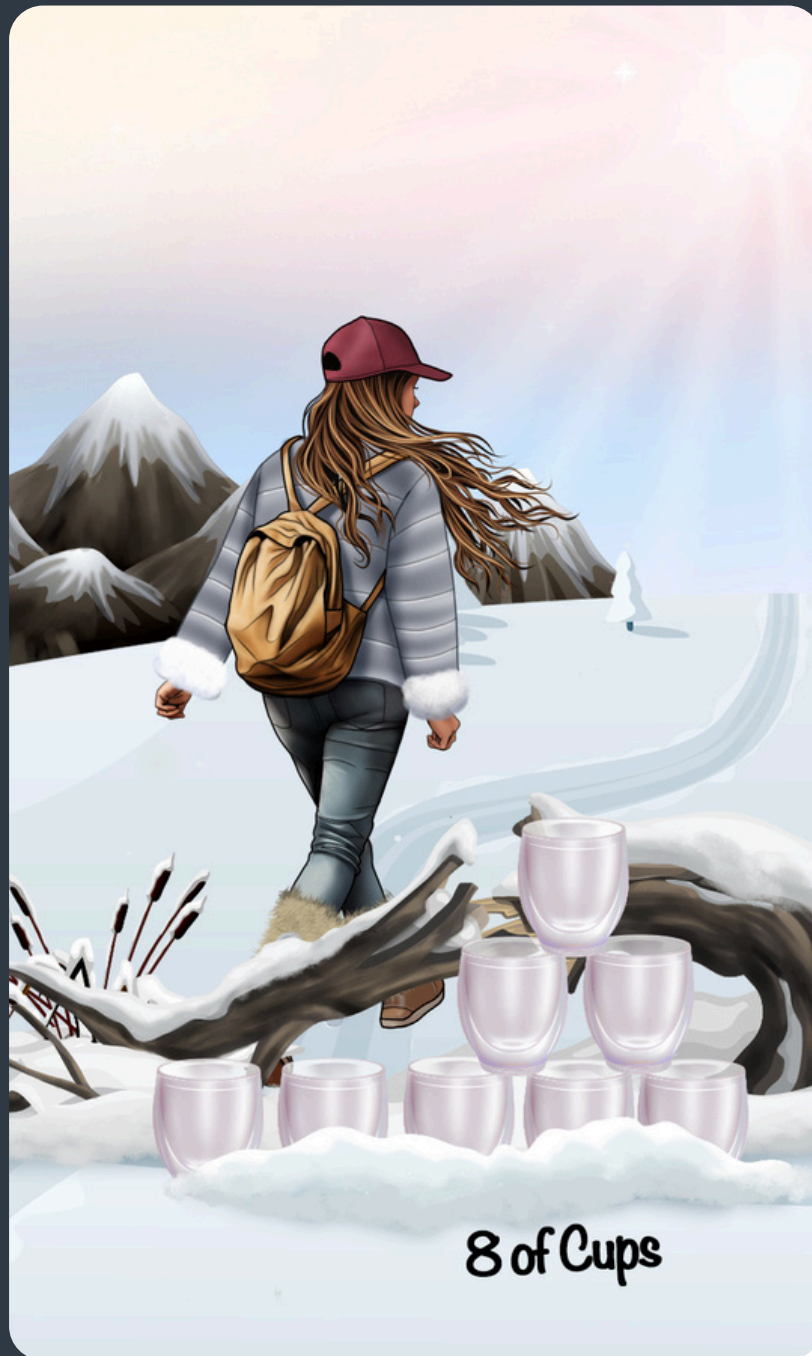
Reversed, the 7 of Cups suggests confusion or indecision, where fantasies cloud judgment. It may point to scattered energy, unfulfilled dreams, or the need to release illusions that no longer serve. This is a call to ground yourself, focusing on what is real and attainable, and to step away from distractions that hinder progress.

Reflection Prompt

What dream are you drawn to, and how can you separate true potential from fleeting temptation?

Affirmation

I see my choices with clarity, weaving my dreams into a purposeful reality.



Minor Arcana - 8 of Cups

Walking Away · Transition · Letting Go · Searching · Inner Truth

Astrological Correspondence

Saturn in Pisces
Element Water 💧

Core Message

The 8 of Cups calls you to embrace the courage to leave behind what no longer serves you, embarking on a journey toward deeper self-discovery. This card reflects the power of releasing attachments to seek a more authentic path.

Symbolism

A figure walks away from a stack of eight cups perched on a snow-covered branch, their back turned toward the abandoned vessels. The snowy landscape and distant mountains evoke a sense of solitude and vast potential, while the rising sun casts a gentle glow, symbolizing new beginnings. A backpack signifies the readiness to carry forward only what is essential, and the barren reeds hint at a past that has withered. The cups, left behind, represent emotional baggage or unfulfilling connections, urging a move toward inner fulfillment.

Upright Meaning

The 8 of Cups marks a time of transition, where you feel compelled to walk away from situations or relationships that no longer resonate. It signifies a brave step toward personal growth, even if the path ahead feels uncertain. This card encourages you to trust your intuition, seeking a life aligned with your deeper truth, and to release what keeps you stagnant.

Shadow / Reversed

In reversal, the 8 of Cups may suggest reluctance to let go, clinging to the familiar despite its emptiness. It can indicate stagnation or fear of the unknown, urging you to confront what holds you back. Alternatively, it might reflect abandoning something prematurely—pause to ensure your departure serves your growth.

Reflection Prompt

What are you ready to leave behind to step into a truer version of yourself?

Affirmation

I release what no longer serves me, walking boldly toward my inner truth.



Minor Arcana - 9 of Cups

Satisfaction · Alignment · Emotional well-being · Personal fulfillment · Gratitude

Astrological Correspondence

Jupiter in Pisces

Element: Water 💧

Core Message

Emotional harmony begins within. This card invites you to savor your present joys, honor your journey, and vibrate in tune with your truest self.

Symbolism

A serene woman leans confidently against a large, radiant cup — the centerpiece of a perfect arc of nine shimmering cups resting on a bed of mist. She holds a singing bowl mallet in her hand, symbolizing self-attunement and inner resonance. Above her, sparkling musical notes float in the air, evoking emotional frequency, beauty, and soulful vibration. Her relaxed posture, tied top, and ripped jeans speak to authentic self-expression and comfort in her own skin. She is not performing — she is simply being. The cups do not overflow chaotically; instead, they hum in harmony, suggesting that true satisfaction comes when the heart, body, and spirit are in rhythm.

Upright Meaning

The Nine of Cups is often called the “wish card,” representing contentment, emotional balance, and dreams manifesting. It’s a sign that your efforts are bearing fruit — not through force, but alignment. This card reminds you to pause, appreciate, and celebrate how far you’ve come. Fulfillment doesn’t always scream; sometimes, it sings softly and steadily, like a note struck just right.

Shadow / Reversed

In reverse, this card can suggest surface-level happiness, overindulgence, or chasing pleasure while neglecting the soul. You may appear fulfilled but feel empty inside. Reconnect to what truly nourishes you. When you tune your inner world, the outer one will follow.

Reflection Prompt

What does satisfaction feel like in my body and spirit — and how can I make more space for that feeling?

Affirmation

I am in harmony with myself. I honor my joy, my journey, and the beautiful sound of being whole.



Minor Arcana - 10 of Cups

Celebration · Harmony · Family · Fulfillment · Emotional Bliss

Astrological Correspondence

Mars in Pisces

Element: Water 💧

Core Message

True happiness is found in presence, connection, and love that endures. This card reminds you that peace of heart is possible — and sometimes, already here.

Symbolism

A family stands barefoot on a soft field of wildflowers, gazing toward a cluster of glowing, translucent cups suspended in the sky. These ten cups shimmer with divine light, symbolizing emotional abundance, harmony, and completion. The central figure — a serviceman in uniform — kneels, arms wrapped tightly around a child, embodying a moment of deep reunion, safety, and love after separation. Beside him, two other children hold hands, barefoot and grounded, wearing matching pajamas that speak to unity, warmth, and the everyday sacredness of being together. This is not fantasy — it is the emotional reality we build through connection and love.

Upright Meaning

The Ten of Cups marks a time of deep emotional fulfillment — especially within family, chosen community, or long-held dreams of peace. Whether this joy has arrived or is just on the horizon, this card affirms that harmony is possible. It can indicate reunions, homecomings, or moments when the heart feels whole. Let yourself feel it. Let it land.

Shadow / Reversed

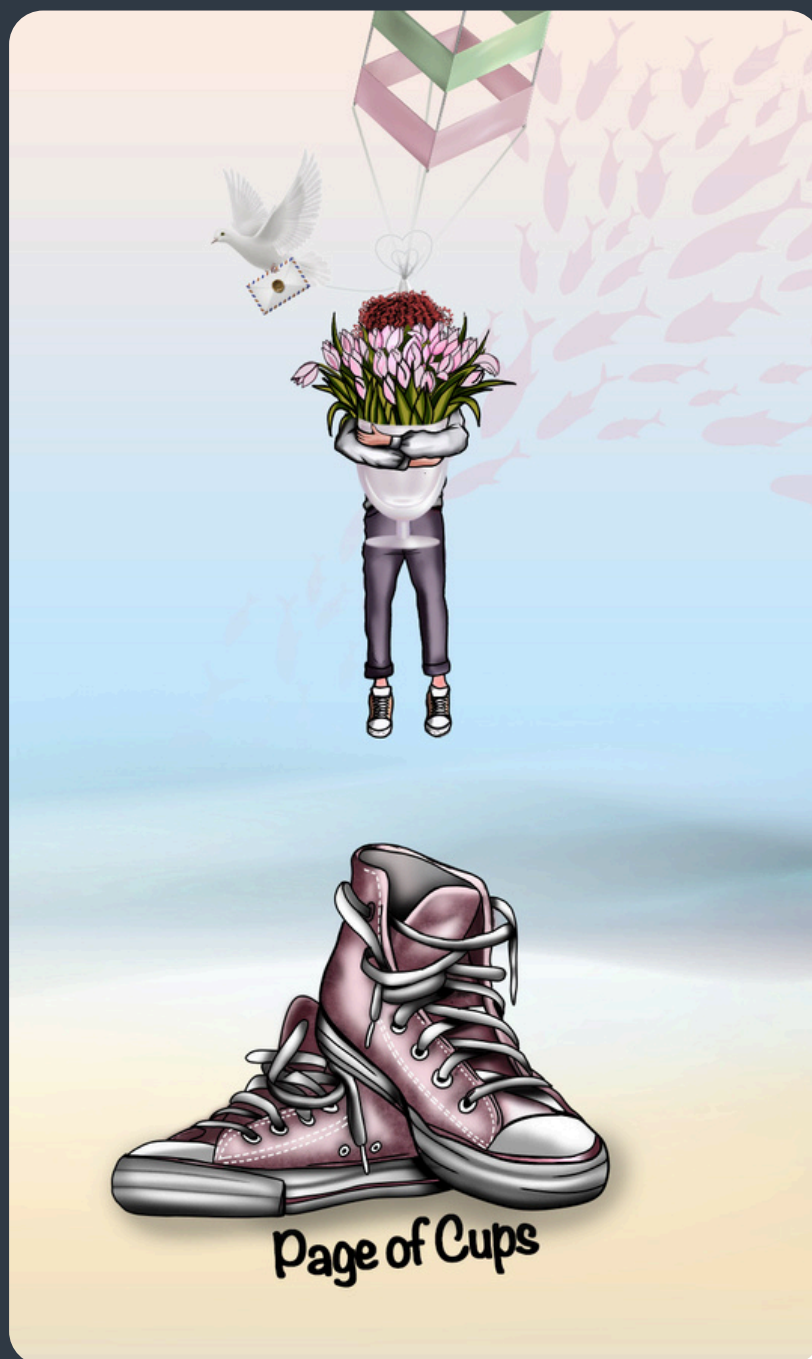
Reversed, this card may signal disconnection, unmet emotional expectations, or a longing for a dream that feels out of reach. Sometimes we chase a picture of happiness that doesn't match the deeper truth of what we need. Turn inward and ask: What does real peace look like for me?

Reflection Prompt

What does emotional fulfillment truly look like in my life — and am I allowing myself to receive it?

Affirmation

I am open to lasting joy, connection, and the quiet beauty of a heart at home.



Court Cards - Page of Cups

Innocence · Emotional beginnings · Imagination · Youthful sensitivity · Receiving love

Astrological Correspondence

Earth (associated with Pages) in Cancer

Element: Water 💧

Energetically aligned with Pisces or Cancer — intuitive, gentle, and deeply imaginative.

Core Message

Your heart is ready to grow. This card invites you to approach your emotional world with wonder, curiosity, and the openness of youth.

Symbolism

A tender figure is gently descending from the sky, holding a lush bouquet of flowers — a symbol of emotional offerings, innocence, and blooming creativity. The kite, shaped like a parachute, evokes childlike wonder and the freedom of youth. Below them sit a pair of oversized pink sneakers, clearly too big — representing the emotional maturity and self-expression they are still growing into — an invitation to step into a fuller version of who they're becoming. A white dove flies alongside, carrying a sealed envelope — a message from the heart, or the universe, yet to be opened. Soft, dreamy fish drift in the background, reinforcing intuition and the deep flow of feeling.

Upright Meaning

The Page of Cups signals emotional beginnings — a fresh feeling, a spark of affection, a creative nudge, or the first steps toward vulnerability. You may be learning how to name your feelings, how to express affection, or how to trust your inner world. The card encourages a playful, open-hearted approach. It's okay to not know everything yet. Emotional growth takes courage, and this is your gentle invitation to try the shoes on — even if they don't quite fit yet.

Shadow / Reversed

When reversed, this card may suggest insecurity, emotional immaturity, or shutting down your inner dreamer. You might be afraid of looking foolish, or worried your heart is “too much.” But hiding from your feelings only delays your growth. Return to your kite. Let yourself be a beginner.

Reflection Prompt

What emotional space am I being asked to grow into — and how can I support myself while I get there?

Affirmation

I honor where I am on my emotional path. With youth in my heart and openness in my hands, I grow into love one step at a time.



Court Cards - Knight of Cups

Romance · Idealism · Charm · Pursuit · Emotional Adventure

Astrological Correspondence

Air (associated with Knights) in Pisces

Element Water 💧

Core Message

The Knight of Cups rides forth with passion and idealism, inviting you to follow your heart on a journey of emotional depth. This card embodies the power of pursuing love, creativity, and dreams with unwavering devotion.

Symbolism

A knight strums a guitar, surrounded by flowing musical notes that dance through the air, symbolizing the harmony of emotion and expression. A white horse stands beside him, representing purity and the drive to chase ideals, while a single cup rests nearby, holding the promise of emotional fulfillment. Open sheet music on the ground reflects a story of inspiration, and the soft, dreamy background evokes a world of imagination and romance.

Upright Meaning

The Knight of Cups signifies a time of romantic pursuit, creative inspiration, or a heartfelt quest. It suggests a charismatic figure or energy entering your life, urging you to follow your passions with courage and sensitivity. This card encourages you to embrace love, art, or a new emotional adventure with an open heart.

Shadow / Reversed

In reversal, the Knight of Cups may indicate moodiness, unrealistic expectations, or being swept away by fantasy. It can suggest a tendency to avoid responsibility or chase illusions rather than facing reality. Reflect on grounding your emotions and aligning your pursuits with practical steps.

Reflection Prompt

What dream or love are you ready to chase, and how can you balance passion with practicality?

Affirmation

I ride boldly toward my heart's desires, blending passion with purpose.



Court Cards - Queen of Cups

Compassion · Intuition · Emotional Depth · Nurturing · Wisdom

Astrological Correspondence

Water (associated with Queens) in Scorpio

Element Water 💧

Core Message

The Queen of Cups embodies the essence of emotional intelligence, inviting you to trust your intuition and nurture your inner world. This card reflects the power of compassion and deep understanding in guiding your relationships and decisions.

Symbolism

A regal figure sits by the water's edge, cradling a cup overflowing with water, symbolizing emotional abundance and growth. Her crown of pearls and coral reflects wisdom born from the depths, while her serene expression and flowing gown evoke a calm, nurturing energy. The ocean behind her mirrors the vastness of her intuitive nature, and the gentle waves suggest a connection to the subconscious.

Upright Meaning

The Queen of Cups signifies a time of emotional clarity and compassionate leadership. She encourages you to listen to your intuition, offer support to others, and embrace your nurturing side. This card may represent a caring figure in your life or a call to cultivate empathy and emotional balance within yourself.

Shadow / Reversed

In reversal, the Queen of Cups may indicate emotional overwhelm, manipulation, or disconnection from intuition. It can suggest a need to set boundaries or address suppressed feelings. Reflect on restoring your emotional equilibrium and trusting your inner voice without losing yourself.

Reflection Prompt

How can you honor your intuition and extend compassion to yourself or others today?

Affirmation

I flow with wisdom and love, nurturing my heart and those around me.



Court Cards - King of Cups

Emotional wisdom · Compassionate authority · Balance · Presence · Mastery of the heart

Astrological Correspondence

Fire of Water

Element: Water 💧

Often associated with Scorpio or Cancer for its depth, intuition, and strength in sensitivity.

Core Message

True power flows from emotional equilibrium. This card invites you to lead with compassion, respond with calm, and embody emotional mastery — without losing your heart.

Symbolism

A serene man sits in meditation on the shore, cross-legged, peaceful, and poised. His calm is unshakable — grounded by wisdom and inner trust. He wears a red tank top, symbolizing passion tempered by purpose, and his silver-streaked hair and beard reflect maturity and lived experience. A single cup rests near his hand, its surface still, with a subtle splash frozen in motion, symbolizing emotional reaction held in balance. The scorpion tattoo on his arm hints at depth, loyalty, and transformative emotional power. In the distance, gentle waves and flying seabirds reflect the serenity of a mind in harmony with its emotions.

Upright Meaning

The King of Cups represents someone who leads from the heart without being ruled by it. This card signals emotional maturity, diplomacy, and empathy in action. You may be called to hold space — for yourself or others — with calm confidence. This is the wise counselor, the compassionate guide, the soul who can ride life's waves without capsizing. Embody stability, not stoicism; lead with empathy, not control.

Shadow / Reversed

Reversed, this card may suggest emotional manipulation, avoidance, or internal overwhelm. You may be suppressing feelings or using emotional control as a shield. Healing begins when you allow your emotions to be acknowledged — not just managed.

Reflection Prompt

Where in my life am I being asked to stay steady — and how can I show up with both strength and softness?

Affirmation

I trust the wisdom of my emotions. I lead with calm, love, and grounded compassion.

Journey



Thank You!

Creator of Journey Tarot Decks, Tracy-K!

Dear Seeker,

The Journey Tarot was born in the quiet corners of my own transformation — through stillness, softness, and sometimes the ache of becoming. These cards were never meant to shout, but to whisper — to offer sanctuary and space in a world that often rushes past meaning.

This guidebook and deck are for anyone who has ever paused mid-step and asked, “Is there more?” You are not alone. May these images and words be a companion as you return, again and again, to yourself.

With love and reverence,

Tracy-K!

Journey

Bless Your Journey Deck

Creator of Journey Tarot Decks, Offers a Blessing

Blessing Your Journey Deck

Before you begin working with your Journey Tarot Deck, take a moment to bless it with purpose and clarity. This blessing sets the tone for a relationship built on trust, intuition, and healing.

Suggested Ritual:

1. **Set the Mood:** Light a candle or some incense (lavender, sage, or artemisia are wonderful choices[1][3]). Sit in a quiet space where you can be fully present.
2. **Hold the Deck:** Place your hands gently on the deck. Take three deep breaths to center yourself.
3. **Speak the Blessing:**

"I welcome the wisdom of this deck. May it be a mirror to my truth, a compass on my path, and a lantern in times of shadow. May it offer clarity, compassion, and insight for all who seek through it. I dedicate this deck to the highest good and the deepest healing."

1. **Optional Elemental Blessing:** You can pass the deck through incense smoke (Air), hold it above a candle (Fire), sprinkle a few drops of water nearby (Water), or rest it on natural fabric or earth (Earth).

Repeat this ritual whenever you feel the deck needs refreshing or reconnecting.

Journey

Exclusive Journey Spreads

Journey Tarot Decks

The Journey Tarot Spreads are designed as soulful maps for inner exploration and intuitive clarity. Rooted in the spirit of self-discovery, each spread offers a unique framework to gently guide you through life's questions, transitions, and awakenings. Whether you're navigating a moment of doubt, seeking your next aligned step, or tuning into your higher self's quiet wisdom, these spreads invite reflection through purposeful placement. Unlike traditional layouts, the Journey spreads emphasize personal resonance, storytelling, and symbolic flow — encouraging you not just to read the cards, but to feel your way through them. Let your deck become a compass, and your reading, the next mile of your journey.

1. **The Journey Spread** (3 cards)

For clarity when the path feels uncertain

1. Where I Am Now – A reflection of your current state or mindset
2. The Whisper – What your higher self is gently trying to show you
3. The Invitation – What step you're being called to take

2. **The Soul Mirror Spread** (5 cards)

For deep inner exploration and emotional healing

1. What I've hidden
2. What I've outgrown
3. What I still carry
4. What wants to be seen
5. How I can move forward with grace

3. **The Journey Spiral Spread** (6 cards)

For long-term visioning and conscious evolution

1. Past Influence
2. Present Insight
3. Unfolding Lesson
4. Soul Support Available
5. Next Aligned Action
6. Message from the Journey Card (pull the Journey card intentionally or let it come naturally)

Exclusive Journey Spreads

Journey Tarot Decks

1. Journey Spread 1: Love Connection (6 cards)

This spread is designed to explore the connection between two people in a romantic relationship, and to help each partner gain insight into their own feelings and the feelings of their partner.

Layout:

1. Partner 1's perspective on the relationship
2. Partner 2's perspective on the relationship
3. What each partner brings to the relationship
4. The connection between the partners
5. Obstacles to the connection
6. The future of the relationship

2. Journey Spread 2: Emotional Connection (6 cards)

This spread is designed to explore the emotional connection between two people in a relationship, and to help each partner gain insight into their own emotions and the emotions of their partner.

Layout:

1. Partner 1's emotions in the relationship
2. Partner 2's emotions in the relationship
3. What each partner needs emotionally
4. The emotional connection between the partners
5. Obstacles to the emotional connection
6. The future of the emotional connection

3. Journey Spread 3: Communication Connection (6 cards)

This spread is designed to explore the communication between two people in a relationship, and to help each partner gain insight into their own communication style and the communication style of their partner.

Layout:

- Partner 1's communication style in the relationship
- Partner 2's communication style in the relationship
- What each partner needs in terms of communication
- The communication connection between the partners
- Obstacles to communication
- The future of communication in the relationship