



The Suit & Tuxedo

RENTAL COLLECTION

JFW

JIM'S FORMAL WEAR

STORE COPY
2025

Slim Fit Styles for **EVERY BODY**



Front & Back Cover
Photos Courtesy of:
@megcookfilmphoto



**Fashion-Forward & Comfortable
for any shape or size**

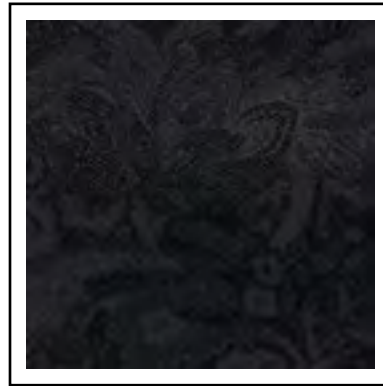
(up to size 74)

COAT FABRIC SWATCHES

FOR RENTAL

Choose your look from our collection of colored tuxedos & suits

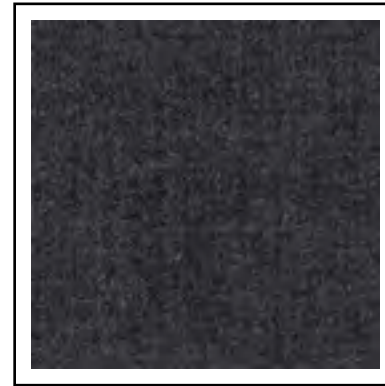
Reference page number for suit & tuxedo details



Color: Black Paisley
Style: 182
Page: 35



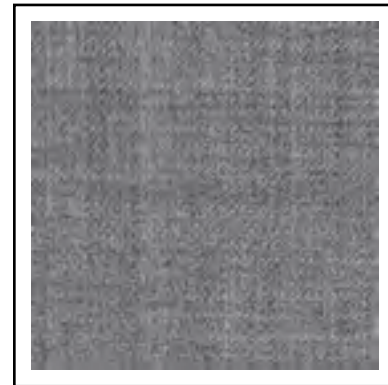
Color: Granite Paisley
Style: 192
Page: 34



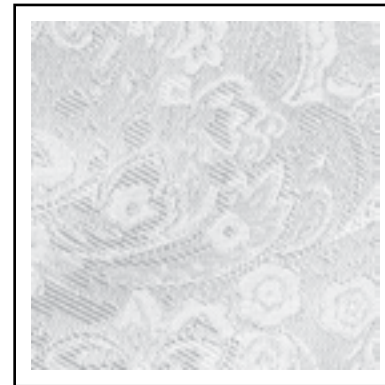
Color: Steel Grey
Styles: 391, 392
Page: 24, 25



Color: Medium Grey
Style: 350
Page: 21



Color: Heather Grey
Style: 262
Page: 29



Color: White/Silver Paisley
Style: 172
Page: 38



Color: Hunter Green
Style: 222
Page: 31



Color: Burgundy
Style: 201
Page: 30



Color: Apple Red Paisley
Style: 122
Page: 36

COAT FABRIC SWATCHES

FOR RENTAL

Choose your look from our collection of colored tuxedos & suits

Reference page number for suit & tuxedo details



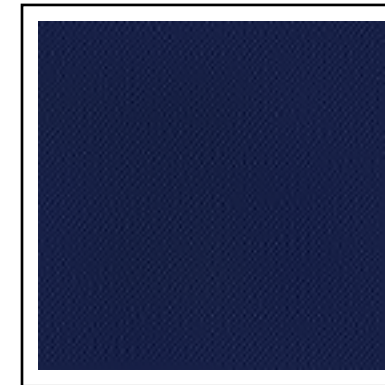
Color: Navy
Style: 311
Page: 18



Color: Navy
Styles: 371, 372
Page: 22, 23



Color: Blue
Style: 302
Page: 20



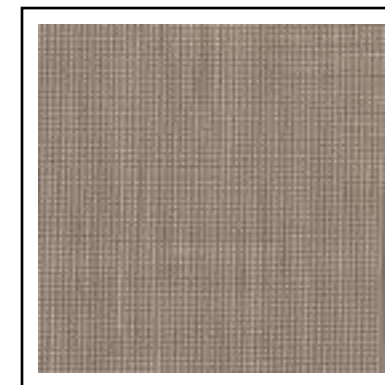
Color: Cobalt Blue
Style: 211
Page: 32



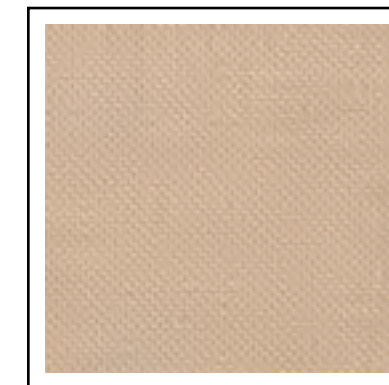
Color: Cobalt Paisley
Style: 132
Page: 37



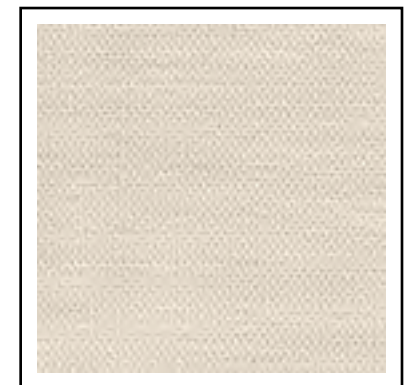
Color: Indigo Blue
Style: 221
Page: 33



Color: Sand
Style: 202
Page: 28



Color: Tan
Style: 252
Page: 39



Color: Tan
Style: 272
Page: 17



shown:
ALLURE MEN®
 Allure Men Heather Grey Clayton Suit - Style 262/N262



RENT OR BUY

THE SAME DESIGNER STYLES SO
 THE WHOLE PARTY MATCHES



RENT OR BUY STYLES



MICHAEL KORS
 Legacy Performance Stretch
 Slim Fit Tuxedo

To Rent Style 921 see page 15
 To Buy Style N921 see page 4 in
 the JFW For Purchase Catalog



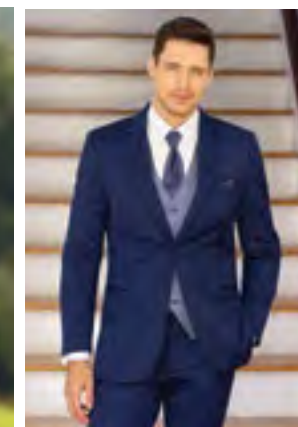
MICHAEL KORS
 Black Performance Stretch
 Slim Fit Wedding Suit

To Rent Style 421 see page 16
 To Buy Style N421 see page 8 in
 the JFW For Purchase Catalog



MICHAEL KORS
 Tan Performance Stretch
 Slim Fit Wedding Suit

To Rent Style 272 see page 17
 To Buy Style N272 see page 5 in
 the JFW For Purchase Catalog



MICHAEL KORS
 Blue Performance Stretch
 Slim Fit Wedding Suit

To Rent Style 302 see page 20
 To Buy Style N302 see page 7 in
 the JFW For Purchase Catalog



MICHAEL KORS
 Medium Grey Performance Stretch
 Slim Fit Wedding Suit

To Rent Style 350 see page 21
 To Buy Style N350 see page 9
 in the JFW For Purchase Catalog



MICHAEL KORS
 Navy Sterling
 Wedding Suit

To Rent Style 372 see page 23
 To Buy Style N372 see page 6 in
 the JFW For Purchase Catalog



MICHAEL KORS
 Steel Grey Sterling
 Wedding Suit

To Rent Style 392 see page 25
 To Buy Style N392 see page 10 in
 the JFW For Purchase Catalog



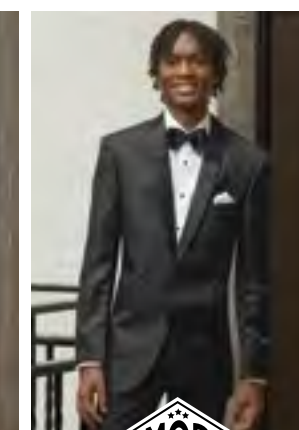
ALLURE MEN
 Heather Grey Clayton
 Slim Fit Suit

To Rent Style 262 see page 29
 To Buy Style N262 see page 11 in
 the JFW For Purchase Catalog



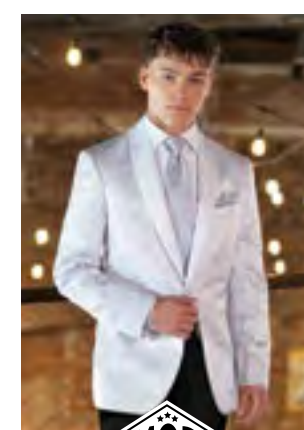
MOD
 Granite Aries Paisley
 Slim Fit Tuxedo

To Rent Style 192 see page 34
 To Buy Style N192 see page 33 in
 the JFW For Purchase Catalog



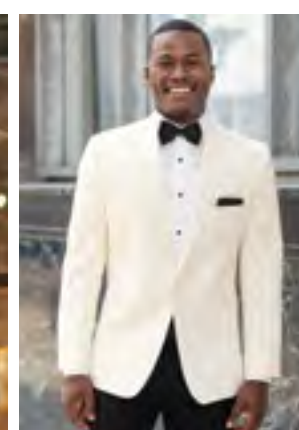
MOD
 Black Aries Paisley
 Slim Fit Tuxedo

To Rent Style 182 see page 35
 To Buy Style N182 see page 32 in
 the JFW For Purchase Catalog



MOD
 White/Silver Aries Paisley
 Slim Fit Tuxedo

To Rent Style 172 see page 38
 To Buy Style N172 see page 31 in
 the JFW For Purchase Catalog



stephengeoffrey
 Ivory Classic Shawl
 Wedding Tuxedo

To Rent Style 601 see page 45
 To Buy Style N601C see page 30 in
 the JFW For Purchase Catalog



stephengeoffrey
 White Classic Shawl
 Wedding Tuxedo

To Rent Style 701 see page 48
 To Buy Style N701 see page 30 in
 the JFW For Purchase Catalog

MIX & MATCH FOR THE PERFECT LOOK!

RENT OR BUY TO SUIT YOUR BUDGET!

RENT OR BUY



Groom Look

To Buy Style N192:
see page 33 in the
JFW For Purchase Catalog

Groomsmen Look

To Rent Style 421:
see page 16



Groom Look

To Buy Style N272C:
see page 5 in the
JFW For Purchase Catalog

Groomsmen Look

To Rent Style 421:
see page 16



RENT OR BUY



Groom Look

To Buy Style NOBC:
see page 19 in the
JFW For Purchase Catalog

Groomsmen Look

To Rent Style 302:
see page 20



Groom Look

To Buy Style NHSC:
see page 15 in the
JFW For Purchase Catalog

Groomsmen Look

To Rent Style 350:
see page 21



Groom Look

To Buy Style N292C:
see page 16 in the
JFW For Purchase Catalog

Groomsmen Look

To Rent Style 202:
see page 28



Groom Look

To Buy Style NHGC:
see page 13 in the
JFW For Purchase Catalog

Groomsmen Look

To Rent Style 421:
see page 16



RENT OR BUY



921-Legacy Performance Stretch
Slim Fit Tuxedo
by Michael Kors
page 15



421-Black Performance Stretch
Slim Fit Wedding Suit
by Michael Kors
page 16



981-Force Performance Stretch
Slim Fit Tuxedo
by Michael Kors
page 19



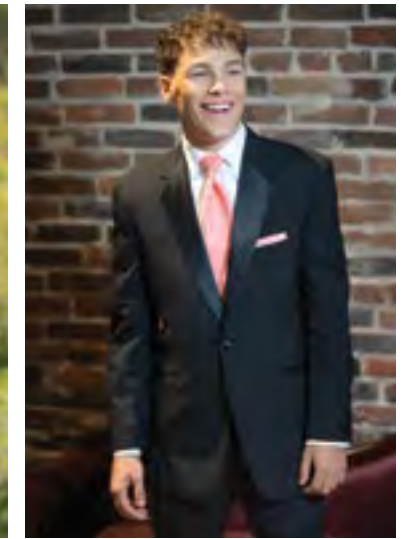
991-Berkeley
Slim Fit Tuxedo
by Michael Kors
page 26



852-Emerson
Modern Fit Tuxedo
by Stephen Geoffrey
page 40



822-Cyprus
Modern Fit Tuxedo
by Stephen Geoffrey
page 41



802-Black Troy
Modern Fit Tuxedo
by Stephen Geoffrey
page 42



990-Berkeley
Modern Fit Tuxedo
by Michael Kors
page 27



192-Granite Aries Paisley
Slim Fit Tuxedo
by Mark of Distinction
page 34



182-Black Aries Paisley
Slim Fit Tuxedo
by Mark of Distinction
page 35



820-Classic Notch
Traditional Fit Tuxedo
-
page 47



880-Classic Peak
Traditional Fit Tuxedo
-
page 49

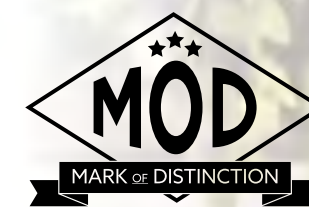


588-Classic Peak Fulldress
Traditional Fit Tuxedo
-
page 50

**MICHAEL
MICHAEL KORS**

**Legacy Slim Fit
Performance Stretch Tuxedo**
Style 921

Photo Courtesy of:
Joleen Willis Photography
joleenwillis.com



**Black Aries Paisley
Slim Fit Tuxedo**
Style 182



GREY/GREEN STYLES



350-Medium Grey Performance Stretch
Slim Fit Wedding Suit
by Michael Kors
page 21



391-Steel Grey Sterling
Slim Fit Wedding Suit
by Michael Kors
page 24



392-Steel Grey Sterling
Modern Fit Wedding Suit
by Michael Kors
page 25



262-Heather Grey Clayton
Slim Fit Suit
by Allure Men
page 29



222-Hunter Green Luka
Slim Fit Suit
by Ike Behar
page 31



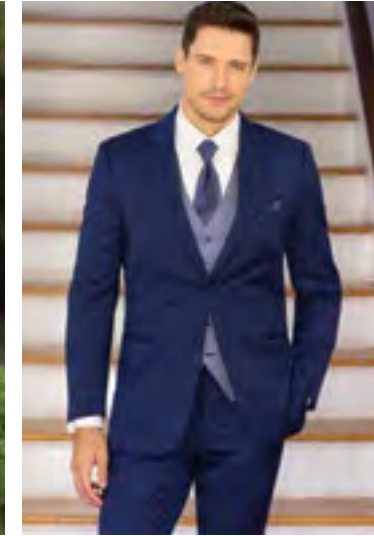
ALLURE MEN

Heather Grey Clayton
Slim Fit Suit
Style 262

BLUE/RED STYLES



311-Navy Performance Stretch
Slim Fit Tuxedo
by Michael Kors
page 18



302-Blue Performance Stretch
Slim Fit Wedding Suit
by Michael Kors
page 20



371-Navy Sterling
Slim Fit Wedding Suit
by Michael Kors
page 22



372-Navy Sterling
Modern Fit Wedding Suit
by Michael Kors
page 23



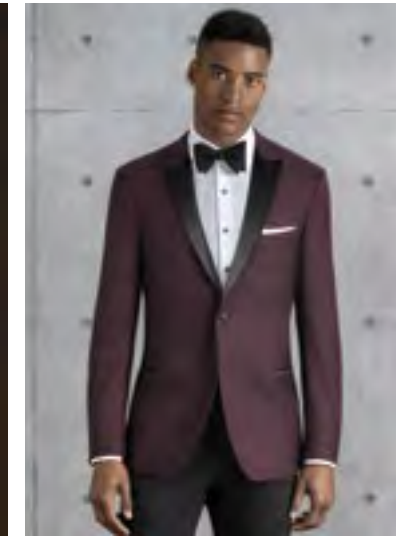
211-Cobalt Blue Tribeca
Slim Fit Tuxedo
by Ike Behar
page 32



221-Indigo Blue Lane
Slim Fit Tuxedo
by Ike Behar
page 33



132-Cobalt Aries Paisley
Slim Fit Tuxedo
by Mark of Distinction
page 37



201-Burgundy Empire
Slim Fit Tuxedo
Kenneth Cole
page 30



122-Apple Red Aries Paisley
Slim Fit Tuxedo
by Mark of Distinction
page 36

MICHAEL MICHAEL KORS

Blue Performance Stretch
Slim Fit Wedding Suit
Style 302



TAN, WHITE & IVORY STYLES

FASHION STYLES



272-Tan Performance Stretch
Slim Fit Wedding Suit
by Michael Kors
page 17



202-Sand Brunswick
Slim Fit Suit
by Allure Men
page 28



252-Tan Havana
Modern Fit Suit
by Lord West
page 39



311-Navy Performance Stretch
Slim Fit Tuxedo
by Michael Kors
page 18



201-Burgundy Empire
Slim Fit Tuxedo
by Kenneth Cole
page 30



222-Hunter Green Luka
Slim Fit Suit
by Ike Behar
page 31



211-Cobalt Blue Tribeca
Slim Fit Tuxedo
by Ike Behar
page 32



172-White/Silver Aries Paisley
Slim Fit Tuxedo
by Mark of Distinction
page 38



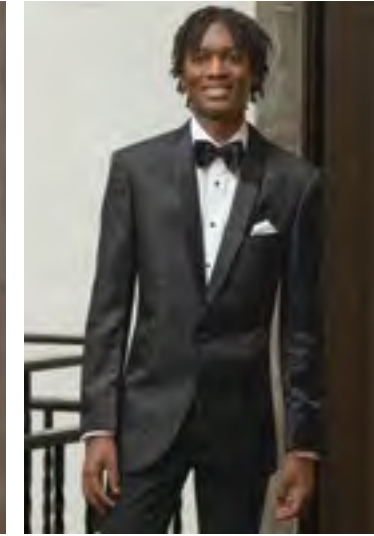
712-White Troy
Modern Fit Tuxedo
by Stephen Geoffrey
page 43



751-Waverly
Slim Fit Tuxedo
by Ike Behar
page 44



192-Granite Aries Paisley
Slim Fit Tuxedo
by Mark of Distinction
page 34



182-Black Aries Paisley
Slim Fit Tuxedo
by Mark of Distinction
page 35



122-Apple Red Aries Paisley
Slim Fit Tuxedo
by Mark of Distinction
page 36



701-White Classic Shawl
Modern Fit Tuxedo
by Stephen Geoffrey
page 48



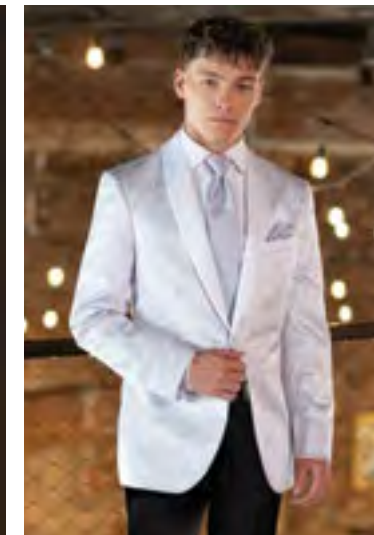
601-Ivory Classic Shawl
Modern Fit Tuxedo
by Stephen Geoffrey
page 45



602-Ivory Troy
Modern Fit Tuxedo
by Stephen Geoffrey
page 46



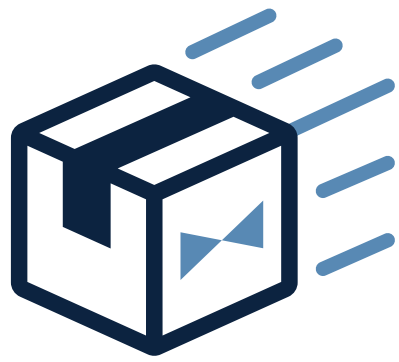
132-Cobalt Aries Paisley
Slim Fit Tuxedo
by Mark of Distinction
page 37



172-White/Silver Aries Paisley
Slim Fit Tuxedo
by Mark of Distinction
page 38

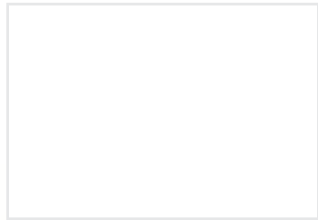


751-Waverly
Slim Fit Tuxedo
by Ike Behar
page 44



DIRECT DELIVERY

Home, Office, Destination...
We'll Deliver There!



Direct Delivery Cost



To BUY see page 4 in the
JFW For Purchase Catalog



MICHAEL KORS

Legacy Performance Stretch Tuxedo

Style 921



SLIM FIT
Contemporary styling
with a slimming
appearance.

Size Scale: A2 - see page 54

Men's coat sizes: 34-74

Boys' coat sizes: 3-18

921 pant sizes: 18-71

Features:

- ▶ Tailored to fit all body types
- ▶ CoolMax® performance stretch fabric
- ▶ Satin notch lapel, side-vented, 30^{1/2}" length
- ▶ Shown with slim fit pants with belt loops and buttons to accommodate suspenders

Fabric Content:

CoolMax® / Sorona® / Wool

To order ensemble as shown:

Coat	921
Slim Fit Pants	921
Shirt (upcharge)	96W
Tie	BSAT
Fullback Vest	F921
Jewelry	BLACK
Formal Shoes (upcharge)	BXS
Pocket Square (purchase only)	PWWH

Black Pant Option:

Slim Fit Pants **921**

DIAMOND COLLECTION



Ring Bearer SAVINGS

ALL STYLES are specially priced for your little guy.

To qualify for the Ring Bearer Special Price:

- ▶ The Ring Bearer must be accompanied by the groom's tuxedo or suit rental and five fully paid rentals in the wedding party.
- ▶ Ring Bearer's tuxedo or suit may not exceed size 16.

All Tuxedos and Suits are specially priced for the Ring Bearer at:

Any pant, basic shirt, tie and premium vest included; shoes and pocket squares are additional.



SCAN ME
for additional images

MICHAEL KORS

Black Performance Stretch Wedding Suit

Style 421



SLIM FIT
Contemporary styling with a slimming appearance.

Size Scale: A2 - see page 54

Men's coat sizes: 34-74

Boys' coat sizes: 3-18

921 pant sizes: 18-71

Features:

- ▶ Tailored to fit all body types
- ▶ CoolMax® performance stretch fabric
- ▶ Self-framed notch lapel, side-vented, 29½" length
- ▶ Shown with slim fit pants with belt loops and buttons to accommodate suspenders

Fabric Content:

CoolMax® / Sorona® / Wool

To order ensemble as shown:

Coat	421
Slim Fit Pants	921
Shirt (upcharge)	96W
Tie	WXRW
Fullback Vest	F921
Jewelry	BLACK
Formal Shoes (upcharge)	BXS
Pocket Square (purchase only)	PWRW
Belt (purchase only)	NBLT

Black Pant Option:

Slim Fit Pants	921
----------------	------------



SCAN ME
for additional images



To BUY see page 8 in the JFW For Purchase Catalog



To BUY see page 5 in the JFW For Purchase Catalog



MICHAEL KORS

Tan Performance Stretch Wedding Suit

Style 272



SLIM FIT
Contemporary styling with a slimming appearance.

Size Scale: A2 - see page 54

Men's coat sizes: 34-74

Boys' coat sizes: 3-18

272 pant sizes: 18-71

Features:

- ▶ Tailored to fit all body types
- ▶ CoolMax® performance stretch fabric
- ▶ Self-framed notch lapel, side-vented, 29½" length
- ▶ Shown with slim fit pants with belt loops and buttons to accommodate suspenders

Fabric Content:

CoolMax® / Sorona® / Wool

To order ensemble as shown:

Coat	272
Slim Fit Pants	272
Shirt (upcharge)	96W
Tie	WFRS
Fullback Vest	F272
Jewelry	BLACK
Formal Shoes (purchase only)	NCSW
Pocket Square (purchase only)	PFRS
Belt (purchase only)	NBLT

Tan Pant Option:

Slim Fit Pants	272
----------------	------------



SCAN ME
for additional images

MICHAEL KORS

Navy Performance Stretch Tuxedo

Style 311



SLIM FIT
Contemporary styling with a slimming appearance.

Size Scale: A2 - see page 54

Men's coat sizes: 34-74

Boys' coat sizes: 3-18

311 pant sizes: 18-71

Features:

- ▶ Tailored to fit all body types
- ▶ CoolMax® performance stretch fabric
- ▶ Black satin peak lapel, side-vented, 29 1/2" length
- ▶ Black satin double besom pockets and button
- ▶ Shown with slim fit pants with belt loops and buttons to accommodate suspenders

Fabric Content:

CoolMax® / Sorona® / Wool

To order ensemble as shown:

Coat	311
Slim Fit Pants	311
Shirt (upcharge)	96W
Tie	BTDS
Fullback Vest	F311
Jewelry	BLACK
Formal Shoes (purchase only)	NBNL
Pocket Square (purchase only)	PWWH
Belt (purchase only)	NILB

Navy Pant Option:

Slim Fit Pants **311**

Black Pant Option:

Slim Fit Pants **921**



SCAN ME
for additional images



MICHAEL KORS

Force Performance Stretch Tuxedo

Style 981



SLIM FIT
Contemporary styling with a slimming appearance.

Size Scale: B - see page 54

Men's coat sizes: 34-66

Boys' coat sizes: 3-18

921 pant sizes: 18-71

Features:

- ▶ Tailored to fit all body types
- ▶ CoolMax® performance stretch fabric
- ▶ Grosgrain notch lapel, side-vented, 29 1/2" length
- ▶ Grosgrain trimmed pockets and covered buttons
- ▶ Shown with slim fit pants with belt loops and buttons to accommodate suspenders

Fabric Content:

CoolMax® / Sorona® / Wool

To order ensemble as shown:

Coat	981
Slim Fit Pants	921
Shirt (purchase only)	N91W
Tie	B981
Fullback Vest	F921
Jewelry	BLACK
Formal Shoes (purchase only)	NBNL
Pocket Square (purchase only)	PWWH
Belt (purchase only)	NILB

Black Pant Option:

Slim Fit Pants **921**



SCAN ME
for additional images

DIAMOND COLLECTION

DIAMOND COLLECTION

MICHAEL KORS

Blue Performance Stretch Wedding Suit

Style 302



SLIM FIT
Contemporary styling with a slimming appearance.

Size Scale: A2 - see page 54

Men's coat sizes: 34-74

Boys' coat sizes: 3-18

302 pant sizes: 18-71

Features:

- ▶ Tailored to fit all body types
- ▶ CoolMax® performance stretch fabric
- ▶ Self-framed notch lapel, side-vented, 30½" length
- ▶ Shown with slim fit pants with belt loops and buttons to accommodate suspenders

Fabric Content:

CoolMax® / Sorona® / Wool

To order ensemble as shown:

Coat	302
Slim Fit Pants	302
Shirt (upcharge)	96W
Tie	WNMB
Fullback Vest	FNMB
Jewelry	BLACK
Formal Shoes (upcharge)	COP
Pocket Square (purchase only)	PNMB
Belt (purchase only)	NBLT

Blue Pant Option:

Slim Fit Pants	302
----------------	------------



SCAN ME
for additional images



To BUY see page 7 in the JFW For Purchase Catalog



To BUY see page 9 in the JFW For Purchase Catalog



MICHAEL KORS

Medium Grey Performance Stretch Wedding Suit

Style 350



SLIM FIT
Contemporary styling with a slimming appearance.

Size Scale: A2 - see page 54

Men's coat sizes: 34-74

Boys' coat sizes: 3-18

350 pant sizes: 18-71

Features:

- ▶ Tailored to fit all body types
- ▶ CoolMax® performance stretch fabric
- ▶ Self-framed notch lapel, side-vented, 29½" length
- ▶ Shown with slim fit pants with belt loops and buttons to accommodate suspenders

Fabric Content:

CoolMax® / Sorona® / Wool

To order ensemble as shown:

Coat	350
Slim Fit Pants	350
Shirt (upcharge)	96W
Tie	BNST
Fullback Vest	FNST
Jewelry	BLACK
Formal Shoes (upcharge)	COP
Pocket Square (purchase only)	PNST
Belt (purchase only)	NBLT

Grey Pant Option:

Slim Fit Pants	350
----------------	------------



SCAN ME
for additional images

MICHAEL KORS

Navy Sterling Wedding Suit

Style 371



SLIM FIT
Contemporary styling
with a slimming
appearance.

Size Scale: E - see page 54

Men's coat sizes: 34-44

Boys' coat sizes: N/A

371 pant sizes: 27-44

Features:

- ▶ Self-framed notch lapel, side-vented, 30 1/2" length
- ▶ Shown with slim fit pants with belt loops and buttons to accommodate suspenders

Fabric Content:

Venetian Super 130's Wool

Companion Coat:

Style 372 - Navy Sterling Modern Fit
Wedding Suit; see page 23

To order ensemble as shown:

Coat	371
Slim Fit Pants	371
Shirt (upcharge)	96W
Tie	BNNA
Fullback Vest	F372
Jewelry	BLACK
Formal Shoes (upcharge)	CXS
Pocket Square (purchase only)	PWWH
Belt (purchase only)	NBLT

Navy Pant Options:

Slim Fit Pants	371
Modern Fit Pants	372



SCAN ME
for additional images



AVAILABLE IN
TWO FITS:
SLIM FIT
Shown
MODERN FIT
See page 23



To BUY see page 6 in the
JFW For Purchase Catalog



AVAILABLE IN
TWO FITS:
MODERN FIT
Shown
SLIM FIT
See page 22

MICHAEL KORS

Navy Sterling Wedding Suit

Style 372



MODERN FIT
Fashion-forward
styling with a flattering
appearance.

Size Scale: B - see page 54

Men's coat sizes: 34-66

Boys' coat sizes: 3-18

372 pant sizes: 18-65

Features:

- ▶ Self-framed notch lapel, side-vented, 30 1/2" length
- ▶ Shown with modern fit pants with belt loops and buttons to accommodate suspenders

Fabric Content:

Venetian Super 130's Wool

Companion Coat:

Style 371 - Navy Sterling Slim Fit
Wedding Suit; see page 22

To order ensemble as shown:

Coat	372
Modern Fit Pants	372
Shirt (upcharge)	96W
Tie	WFSE
Fullback Vest	F372
Jewelry	BLACK
Formal Shoes (upcharge)	CXS
Pocket Square (purchase only)	PFSE
Belt (purchase only)	NBLT

Navy Pant Options:

Slim Fit Pants	371
Modern Fit Pants	372



SCAN ME
for additional images

MICHAEL KORS

Steel Grey Sterling Wedding Suit

Style 391

S **SLIM FIT**
Contemporary styling with a slimming appearance.

Size Scale: E - see page 54
Men's coat sizes: 34-44
Boys' coat sizes: N/A
391 pant sizes: 27-44

Features:

- ▶ Self-framed notch lapel, side-vented, 30 1/2" length
- ▶ Shown with slim fit pants with belt loops and buttons to accommodate suspenders

Fabric Content:

Venetian Super 130's Wool

Companion Coat:

Style 392 - Steel Grey Sterling Modern Fit Wedding Suit; see page 25

To order ensemble as shown:

Coat	391
Slim Fit Pants	391
Shirt (upcharge)	96W
Tie	WNWI
Fullback Vest	F392
Jewelry	BLACK
Formal Shoes (upcharge)	CXS
Pocket Square (purchase only)	PNWI
Belt (purchase only)	NBLT

Steel Grey Pant Options:

Slim Fit Pants	391
Modern Fit Pants	392



SCAN ME
for additional images

AVAILABLE IN
TWO FITS:

SLIM FIT
Shown

MODERN FIT
See page 25



To BUY see page 10 in the JFW For Purchase Catalog

AVAILABLE IN
TWO FITS:

MODERN FIT
Shown

SLIM FIT
See page 24

MICHAEL KORS

Steel Grey Sterling Wedding Suit

Style 392

M **MODERN FIT**
Fashion-forward styling with a flattering appearance.

Size Scale: B - see page 54
Men's coat sizes: 34-66
Boys' coat sizes: 3-18
392 pant sizes: 18-65

Features:

- ▶ Self-framed notch lapel, side-vented, 30 1/2" length
- ▶ Shown with modern fit pants with belt loops and buttons to accommodate suspenders

Fabric Content:

Venetian Super 130's Wool

Companion Coat:

Style 391 - Steel Grey Sterling Slim Fit Wedding Suit; see page 24

To order ensemble as shown:

Coat	392
Modern Fit Pants	392
Shirt (upcharge)	96W
Tie	BNST
Fullback Vest	F392
Jewelry	BLACK
Formal Shoes (upcharge)	COP
Pocket Square (purchase only)	PNST
Belt (purchase only)	NBLT

Steel Grey Pant Options:

Slim Fit Pants	391
Modern Fit Pants	392



SCAN ME
for additional images

DIAMOND COLLECTION

DIAMOND COLLECTION

MICHAEL KORS

Berkeley Tuxedo Style 991

S **SLIM FIT**
Contemporary styling
with a slimming
appearance.

Size Scale: E - see page 54
Men's coat sizes: 34-44
Boys' coat sizes: N/A
991 pant sizes: 18-59

Features:

- ▶ Grosgrain notch lapel, side-vented, 30^{1/2}" length
- ▶ Grosgrain trimmed pockets
- ▶ Shown with slim fit pants with no stripe

Fabric Content:

Venetian Super 130's Wool

Companion Coat:

Style 990 - Berkeley Modern Fit Tuxedo;
see page 27

To order ensemble as shown:

Coat	991
Slim Fit Pants	991
Shirt (upcharge)	96W
Tie	BXBL
Fullback Vest	F900
Jewelry	BLACK
Formal Shoes (upcharge)	BDS
Pocket Square (purchase only)	PWWH

Black Pant Options:

Slim Fit Pants	991
Modern Fit Pants	990



SCAN ME
for additional images

AVAILABLE IN
TWO FITS:

SLIM FIT
Shown

MODERN FIT
See page 27

MICHAEL KORS

Berkeley Tuxedo Style 990

M **MODERN FIT**
Fashion-forward
styling with a flattering
appearance.

Size Scale: B - see page 54
Men's coat sizes: 34-66
Boys' coat sizes: 3-18
990 pant sizes: 18-65

Features:

- ▶ Grosgrain notch lapel, side-vented, 30^{1/2}" length
- ▶ Grosgrain trimmed pockets
- ▶ Shown with modern fit pants with grosgrain piping on the leg

Fabric Content:

Venetian Super 130's Wool

Companion Coat:

Style 991 - Berkeley Slim Fit Tuxedo;
see page 26

To order ensemble as shown:

Coat	990
Modern Fit Pants	990
Shirt (upcharge)	96W
Tie	BXBL
Fullback Vest	F900
Jewelry	BLACK
Formal Shoes (upcharge)	BDS
Pocket Square (purchase only)	PWWH

Black Pant Options:

Slim Fit Pants	991
Modern Fit Pants	990



SCAN ME
for additional images



DIAMOND COLLECTION

DIAMOND COLLECTION

ALLURE MEN

Sand Brunswick Suit

Style 202

S **SLIM FIT**
Contemporary styling with a slimming appearance.

Size Scale: B - see page 54

Men's coat sizes: 34-66

Boys' coat sizes: 3-18

202 pant sizes: 18-65

Features:

- ▶ Tailored to fit all body types
- ▶ Self-framed notch lapel, side-vented, 30" length
- ▶ Shown with slim fit pants with belt loops and buttons to accommodate suspenders

Fabric Content:

60/40 Super 130's Wool Blend

To order ensemble as shown:

Coat	202
Slim Fit Pants	202
Shirt (upcharge)	96W
Tie	WFWI
Fullback Vest	F202
Jewelry	BLACK
Formal Shoes (upcharge)	COP
Pocket Square (purchase only)	PFWI
Belt (purchase only)	NBLT

Sand Pant Option:

Slim Fit Pants	202
----------------	------------



SCAN ME
for additional images



To BUY see page 11 in the JFW For Purchase Catalog

ALLURE MEN

Heather Grey Clayton Suit

Style 262

S **SLIM FIT**
Contemporary styling with a slimming appearance.

Size Scale: A2 - see page 54

Men's coat sizes: 34-74

Boys' coat sizes: 3-18

262 pant sizes: 18-71

Features:

- ▶ Tailored to fit all body types
- ▶ Self-framed notch lapel, side-vented, 29 7/8" length
- ▶ Shown with slim fit pants with belt loops and buttons to accommodate suspenders

Fabric Content:

Super 130's Wool

To order ensemble as shown:

Coat	262
Slim Fit Pants	262
Shirt (upcharge)	96W
Tie	BXNA
Fullback Vest	F262
Jewelry	BLACK
Formal Shoes (upcharge)	CXS
Pocket Square (purchase only)	PWNA
Belt (purchase only)	NBLT

Heather Grey Pant Option:

Slim Fit Pants	262
----------------	------------



SCAN ME
for additional images



KENNETH COLE

Burgundy Empire Tuxedo

Style 201



SLIM FIT
Contemporary styling with a slimming appearance.

Size Scale: D - see page 54

Men's coat sizes: 34-60

Boys' coat sizes: 3-18

991 pant sizes: 18-59

Features:

- ▶ Tailored to fit all body types
- ▶ Black satin peak lapel, side-vented, 30^{1/2}" length
- ▶ Black satin double besom pockets
- ▶ Shown with black slim fit pants with no stripe

Fabric Content:

Super 120's Wool

To order ensemble as shown:

Coat	201
Slim Fit Pants	991
Shirt (upcharge)	96W
Tie	BSAT
Jewelry	BLACK
Formal Shoes (upcharge)	BDS
Pocket Square (purchase only)	PWWH

Black Pant Options:

Slim Fit Pants	991
Modern Fit Pants	990



SCAN ME
for additional images



IK EVENING
BY KE BEHAR

Hunter Green Luka Suit

Style 222



SLIM FIT
Contemporary styling with a slimming appearance.

Size Scale: A2 - see page 54

Men's coat sizes: 34-74

Boys' coat sizes: 3-18

222 pant sizes: 18-71

Features:

- ▶ Tailored to fit all body types
- ▶ Pick-stitched, self notch lapel, side-vented, flap pockets, 29^{3/4}" length
- ▶ Shown with slim fit pants with belt loops

Fabric Content:

100% Wool

To order ensemble as shown:

Coat	222
Slim Fit Pants	222
Shirt (upcharge)	96W
Tie	WLDC
Fullback Vest	F222
Jewelry	BLACK
Formal Shoes (upcharge)	COP
Pocket Square (purchase only)	PLDC
Belt (purchase only)	NILT

Hunter Green Pant Option:

Slim Fit Pants	222
----------------	-----



SCAN ME
for additional images



DIAMOND COLLECTION

DIAMOND COLLECTION

**Cobalt Blue
Tribeca Tuxedo**
Style 211

S **SLIM FIT**
Contemporary styling
with a slimming
appearance.

Size Scale: D - see page 54
Men's coat sizes: 34-60
Boys' coat sizes: 3-18
211 pant sizes: 18-59

Features:

- ▶ Tailored to fit all body types
- ▶ Black satin peak lapel, side-vented, 30" length
- ▶ Black satin double besom pockets
- ▶ Shown with slim fit pants with no stripe

Fabric Content:

Super 120's Wool

To order ensemble as shown:

Coat	211
Slim Fit Pants	211
Shirt (upcharge)	96W
Tie	BXBL
Fullback Vest	EXBL
Jewelry	BLACK
Formal Shoes (upcharge)	BDS
Pocket Square (purchase only)	PWWH

Cobalt Blue Pant Option:

Slim Fit Pants	211
----------------	------------

Black Pant Options:

Slim Fit Pants	991
Modern Fit Pants	990



SCAN ME
for additional images



**Indigo Blue
Lane Tuxedo**
Style 221

S **SLIM FIT**
Contemporary styling
with a slimming
appearance.

Size Scale: B - see page 54
Men's coat sizes: 34-66
Boys' coat sizes: 3-18
221 pant sizes: 18-65

Features:

- ▶ Tailored to fit all body types
- ▶ Satin-edged peak lapel, side-vented, 29 1/4" length
- ▶ Shown with slim fit pants with no stripe

Fabric Content:

Super 120's Wool

To order ensemble as shown:

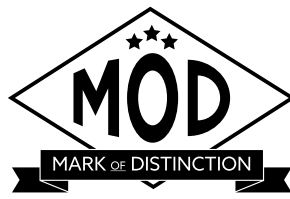
Coat	221
Slim Fit Pants	221
Shirt (upcharge)	96W
Tie	BXCP
Fullback Vest	EXCP
Jewelry	BLACK
Formal Shoes (upcharge)	CXS
Pocket Square (purchase only)	PWCP

Indigo Blue Pant Option:

Slim Fit Pants	221
----------------	------------



SCAN ME
for additional images



Granite Aries Paisley Tuxedo

Style 192



SLIM FIT
Contemporary styling with a slimming appearance.

Size Scale: G - see page 54

Men's coat sizes: 34-66 (even sizes only)

Boys' coat sizes: 3-18 (even sizes only)

N11P pant sizes: 26-44 (even sizes only)

Features:

- ▶ Black satin shawl lapel, side-vented, 30^{1/2}" length
- ▶ Fabric covered buttons
- ▶ Shown with Black Euro Slim Stretch Suit Pants for purchase

Fabric Content:

100% Polyester

To order ensemble as shown:

Coat	192
Euro Slim Pants (purchase only)	N11P
Shirt (upcharge)	96W
Tie	BSAT
Jewelry	BLACK
Formal Shoes (purchase only)	NCSSS
Pocket Square (purchase only)	PWBL

Black Pant Options:

Euro Slim Pants (purchase only)	N11P
Slim Fit Pants	921
Modern Fit Pants	990



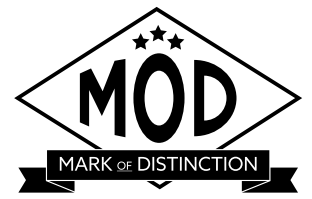
SCAN ME
for additional images



To BUY see page 33 in the JFW For Purchase Catalog



To BUY see page 32 in the JFW For Purchase Catalog



Black Aries Paisley Tuxedo

Style 182



SLIM FIT
Contemporary styling with a slimming appearance.

Size Scale: G - see page 54

Men's coat sizes: 34-66 (even sizes only)

Boys' coat sizes: 3-18 (even sizes only)

N11P pant sizes: 26-44 (even sizes only)

Features:

- ▶ Black satin shawl lapel, side-vented, 30^{1/2}" length
- ▶ Fabric covered buttons
- ▶ Shown with Black Euro Slim Stretch Suit Pants for purchase

Fabric Content:

100% Polyester

To order ensemble as shown:

Coat	182
Euro Slim Pants (purchase only)	N11P
Shirt (upcharge)	96W
Tie	BSAT
Jewelry	BLACK
Formal Shoes (purchase only)	NBSKS
Pocket Square (purchase only)	PWWH

Black Pant Options:

Euro Slim Pants (purchase only)	N11P
Slim Fit Pants	921
Modern Fit Pants	990

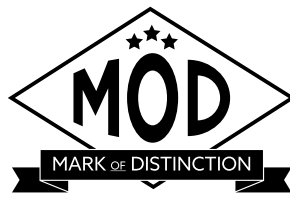


SCAN ME
for additional images



DIAMOND COLLECTION

DIAMOND COLLECTION



Apple Red Aries Paisley Tuxedo

Style 122



SLIM FIT
Contemporary styling with a slimming appearance.

Size Scale: F - see page 54

Men's coat sizes: 34-50 (even sizes only)

Boys' coat sizes: 14-18 (even sizes only)

N11P pant sizes: 26-44 (even sizes only)

Features:

- ▶ **Limited size scale**
- ▶ Black satin shawl lapel, side-vented, 30¹/₂" length
- ▶ Fabric covered buttons
- ▶ Shown with Black Euro Slim Stretch Suit Pants for purchase

Fabric Content:

100% Polyester

To order ensemble as shown:

Coat	122
Euro Slim Pants (purchase only)	N11P
Shirt (upcharge)	96W
Tie	BSAT
Jewelry	BLACK
Formal Shoes (purchase only)	NCSSS
Pocket Square (purchase only)	PWBL

Black Pant Options:

Euro Slim Pants (purchase only)	N11P
Slim Fit Pants	921
Modern Fit Pants	990

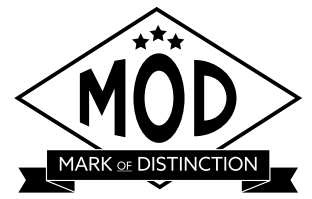


SCAN ME
for additional images

LIMITED
SIZE SCALE



LIMITED
SIZE SCALE



Cobalt Aries Paisley Tuxedo

Style 132



SLIM FIT
Contemporary styling with a slimming appearance.

Size Scale: F - see page 54

Men's coat sizes: 34-50 (even sizes only)

Boys' coat sizes: 14-18 (even sizes only)

N11P pant sizes: 26-44 (even sizes only)

Features:

- ▶ **Limited size scale**
- ▶ Black satin shawl lapel, side-vented, 30¹/₂" length
- ▶ Fabric covered buttons
- ▶ Shown with Black Euro Slim Stretch Suit Pants for purchase

Fabric Content:

100% Polyester

To order ensemble as shown:

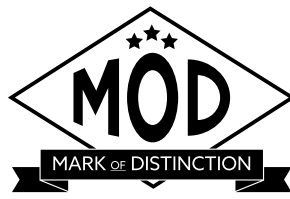
Coat	132
Euro Slim Pants (purchase only)	N11P
Shirt (upcharge)	96W
Tie	BSAT
Jewelry	BLACK
Formal Shoes (purchase only)	NBLVS
Pocket Square (purchase only)	PWBL

Black Pant Options:

Euro Slim Pants (purchase only)	N11P
Slim Fit Pants	921
Modern Fit Pants	990



SCAN ME
for additional images



White/Silver Aries Paisley Tuxedo

Style 172

S

SLIM FIT
Contemporary styling with a slimming appearance.

Size Scale: F - see page 54

Men's coat sizes: 34-50 (even sizes only)

Boys' coat sizes: 14-18 (even sizes only)

N11P pant sizes: 26-44 (even sizes only)

Features:

- ▶ **Limited size scale**
- ▶ White satin shawl lapel, side-vented, 30 1/2" length
- ▶ Fabric covered buttons
- ▶ Shown with Black Euro Slim Stretch Suit Pants for purchase

Fabric Content:

100% Polyester

To order ensemble as shown:

Coat	172
Euro Slim Pants (purchase only)	N11P
Shirt (upcharge)	96W
Tie	WFPT
Jewelry	BLACK
Formal Shoes (purchase only)	NSSKS
Pocket Square (purchase only)	PFPT

White Pant Options:

Euro Slim Pants (purchase only)	N17P
Modern Fit Pants	750

Black Pant Options:

Euro Slim Pants (purchase only)	N11P
Slim Fit Pants	921
Modern Fit Pants	990



SCAN ME
for additional images

RENT
OR
BUY

To BUY see page 31 in the
JFW For Purchase Catalog

LIMITED
SIZE SCALE



LORD & WEST

Tan Havana Suit

Style 252

M

MODERN FIT
Fashion-forward styling with a flattering appearance.

Size Scale: B2 - see page 54

Men's coat sizes: 34-66

Boys' coat sizes: 3-18

252 pant sizes: 18-65

Features:

- ▶ Self notch lapel, bone buttons, side-vented, 30" length
- ▶ Shown with modern fit pants with no stripe

Fabric Content:

Ultra Fine Poly / Wool Blend

To order ensemble as shown:

Coat	252
Modern Fit Pants	252
Shirt (upcharge)	96W
Tie	WRCP
Fullback Vest	F252
Jewelry	BLACK
Formal Shoes (upcharge)	CXS
Pocket Square (purchase only)	PKWH

Tan Pant Options:

Slim Fit Pants	251
Modern Fit Pants	252

PLATINUM COLLECTION



stephengeoffrey

Emerson Tuxedo Style 852



MODERN FIT
Fashion-forward styling with a flattering appearance.

Size Scale: H - see page 54

Men's coat sizes: 34-56

Boys' coat sizes: 14-18

850 pant sizes: 18-71

Features:

- ▶ **Limited size scale**
- ▶ Grosgrain notch lapel, non-vented, 3 1/2" length
- ▶ Grosgrain buttons
- ▶ Shown with modern fit pants with a beaded stripe

Fabric Content:

100% Tropical Worsted Wool

To order ensemble as shown:

Coat	852
Modern Fit Pants	850
Shirt (upcharge)	96W
Tie	WKLA
Fullback Vest	HRLA
Jewelry	BLACK
Formal Shoes (upcharge)	BDS
Pocket Square (purchase only)	PKLA

Black Pant Option:

Modern Fit Pants **850**



LIMITED
SIZE SCALE



stephengeoffrey

Cyprus Tuxedo Style 822



MODERN FIT
Fashion-forward styling with a flattering appearance.

Size Scale: B2 - see page 54

Men's coat sizes: 34-66

Boys' coat sizes: 3-18

850 pant sizes: 18-71

Features:

- ▶ Satin shawl lapel, non-vented, 3 1/2" length
- ▶ Shown with modern fit pants with a beaded stripe

Fabric Content:

100% Tropical Worsted Wool

To order ensemble as shown:

Coat	822
Modern Slim Fit Pants	850
Shirt (upcharge)	96W
Tie	WXRA
Fullback Vest	EXRA
Jewelry	BLACK
Formal Shoes (upcharge)	BDS
Pocket Square (purchase only)	PWRA

Black Pant Option:

Modern Fit Pants **850**



PLATINUM COLLECTION

PLATINUM COLLECTION



stephengeoffrey

Black Troy Tuxedo

Style 802



MODERN FIT
Fashion-forward styling with a flattering appearance.

Size Scale: H - see page 54

Men's coat sizes: 34-56

Boys' coat sizes: 14-18

850 pant sizes: 18-71

Features:

- ▶ **Limited size scale**
- ▶ Satin notch lapel, non-vented, 31¹/₂" length
- ▶ Shown with modern fit pants with a beaded stripe

Fabric Content:

100% Worsted Wool

To order ensemble as shown:

Coat	802
Modern Fit Pants	850
Shirt (upcharge)	96W
Tie	WRCO
Fullback Vest	HRCO
Jewelry	BLACK
Formal Shoes (upcharge)	BDS
Pocket Square (purchase only)	PKCO

Black Pant Option:

Modern Fit Pants	850
------------------	------------

LIMITED
SIZE SCALE



stephengeoffrey

White Troy Tuxedo

Style 712



MODERN FIT
Fashion-forward styling with a flattering appearance.

Size Scale: B - see page 54

Men's coat sizes: 34-66

Boys' coat sizes: 3-18

750 pant sizes: 18-65

Features:

- ▶ Satin notch lapel, non-vented, 31¹/₂" length
- ▶ Shown with modern fit pants with a beaded stripe

Fabric Content:

100% Polyester

To order ensemble as shown:

Coat	712
Modern Fit Pants	750
Shirt (upcharge)	96W
Tie	BXWH
Fullback Vest	EXWH
Jewelry	PEARL
Formal Shoes (upcharge)	WAS
Pocket Square (purchase only)	PWWH

White Pant Option:

Modern Fit Pants	750
------------------	------------



PLATINUM COLLECTION

PLATINUM COLLECTION

Waverly Tuxedo
Style 751

S **SLIM FIT**
Contemporary styling
with a slimming
appearance.

Size Scale: D - see page 54
Men's coat sizes: 34-60
Boys' coat sizes: 3-18
991 pant sizes: 18-59

Features:

- ▶ Tailored to fit all body types
- ▶ Self shawl lapel edged in black satin, center-vented, 30" length
- ▶ Shown with black slim fit pants with no stripe

Fabric Content:
100% Polyester

To order ensemble as shown:

Coat	751
Slim Fit Pants	991
Shirt (upcharge)	96W
Tie	BXBL
Fullback Vest	EXBL
Jewelry	BLACK
Formal Shoes (upcharge)	BDS
Pocket Square (purchase only)	PWBL

White Pant Option:

Modern Fit Pants **750**

Black Pant Options:

Slim Fit Pants **991**

Modern Fit Pants **850**



RENT
OR
BUY

To BUY see page 30 in the
JFW For Purchase Catalog



Ivory Classic
Shawl Tuxedo
Style 601

M **MODERN FIT**
Fashion-forward
styling with a flattering
appearance.

Size Scale: B - see page 54
Men's coat sizes: 34-66
Boys' coat sizes: 3-18
991 pant sizes: 18-59

Features:

- ▶ Self shawl lapel, side-vented, 30 1/2" length
- ▶ Shown with black slim fit pants with no stripe

Fabric Content:
100% Polyester

To order ensemble as shown:

Coat	601
Slim Fit Pants	991
Shirt (upcharge)	96W
Tie	BSAT
Sash	CUMB
Jewelry	BLACK
Formal Shoes (upcharge)	BDS
Pocket Square (purchase only)	PWBL

Ivory Pant Option:

Modern Fit Pants **650**

Black Pant Options:

Slim Fit Pants **991**

Modern Fit Pants **850**



stephengeoffrey

Ivory Troy Tuxedo

Style 602



MODERN FIT

Fashion-forward styling with a flattering appearance.

Size Scale: B2 - see page 54

Men's coat sizes: 34-66

Boys' coat sizes: 3-18

650 pant sizes: 18-65

Features:

- ▶ Satin notch lapel, non-vented, 31½" length
- ▶ Shown with modern fit pants with a beaded stripe

Fabric Content:

100% Polyester

To order ensemble as shown:

Coat	602
Modern Fit Pants	650
Shirt (upcharge)	96W
Tie	WRGO
Fullback Vest	HRGO
Jewelry	BLACK
Formal Shoes (upcharge)	COP
Pocket Square (purchase only)	PKGO

Ivory Pant Option:

Modern Fit Pants	650
------------------	------------



Classic Notch Tuxedo

Style 820



TRADITIONAL FIT

A classic, fuller cut tuxedo.

Size Scale: A - see page 54;

expanded sizes available

Men's coat sizes: 34-74

Boys' coat sizes: 2-18

850 pant sizes: 18-71

Features:

- ▶ Satin notch lapel, non-vented, 31½" length
- ▶ Shown with modern fit pants with a beaded stripe

Fabric Content:

100% Worsted Wool

To order ensemble as shown:

Coat	820
Modern Fit Pants	850
Shirt	85W
Tie	BSAT
Sash	CUMB
Jewelry	BLACK
Formal Shoes (upcharge)	BDS
Pocket Square (purchase only)	PSWH

Black Pant Option:

Modern Fit Pants	850
------------------	------------

White Classic Shawl Tuxedo

Style 701



MODERN FIT
Fashion-forward styling with a flattering appearance.

Size Scale: B2 - see page 54

Men's coat sizes: 34-66

Boys' coat sizes: 3-18

850 pant sizes: 18-71

Features:

- ▶ Self shawl lapel, flap pockets, non-vented, 30" length
- ▶ Shown with black modern fit pants with a beaded stripe

Fabric Content:

100% Polyester

To order ensemble as shown:

Coat	701
Modern Fit Pants	850
Shirt	85W
Tie	BSAT
Sash	CUMB
Jewelry	BLACK
Formal Shoes (upcharge)	BDS
Pocket Square (purchase only)	PSBL

White Pant Option:

Modern Fit Pants **750**

Black Pant Option:

Modern Fit Pants **850**



To BUY see page 30 in the JFW For Purchase Catalog



Classic Peak Tuxedo

Style 880



TRADITIONAL FIT
A classic, fuller cut tuxedo.

Size Scale: A - see page 54;

expanded sizes available

Men's coat sizes: 34-74

Boys' coat sizes: 2-18

850 pant sizes: 18-71

Features:

- ▶ Satin peak lapel, center-vented, 31 1/2" length
- ▶ Shown with modern fit pants with a beaded stripe

Fabric Content:

100% Worsted Wool

To order ensemble as shown:

Coat	880
Modern Fit Pants	850
Shirt	85W
Tie	BSAT
Sash	CUMB
Jewelry	BLACK
Formal Shoes (upcharge)	BDS
Pocket Square (purchase only)	PSWH

Black Pant Option:

Modern Fit Pants **850**

Classic Peak Fulldress Tuxedo Style 588



TRADITIONAL FIT
A classic, fuller cut tuxedo.

Size Scale: D - see page 54

Men's coat sizes: 34-60

Boys' coat sizes: 3-18

850 pant sizes: 18-71

Features:

- ▶ Six-button fulldress styling
- ▶ Satin peak lapel, center-vented tail, 42" length
- ▶ Shown with modern fit pants with a beaded stripe

Fabric Content:

100% Tropical Worsted Wool

To order ensemble as shown:

Coat	588
Modern Fit Pants	850
Shirt	36W
Tie	BPIQ
Vest	VPIQ
Jewelry	PEARL
Formal Shoes (upcharge)	BDS
Pocket Square (purchase only)	PSWH

Black Pant Option:

Modern Fit Pants	850
------------------	------------



MEASURING TECHNIQUES

NO LOOSE MEASUREMENTS OR FINGERS UNDER THE MEASURING TAPE

Always record the customer's height & weight, as well as his fit preference (regular or tighter fit)



CHEST

- Lift arms
- Place tape around broadest part of chest
- Lower arms to side and relax
- Measure from side to ensure tape is level



OVERARM

- Arms relaxed by side
- Place tape around broadest part of chest and arms
- Measure from side to ensure tape is level



NECK

- Measure around neck where collar will button
- Do not place fingers under the tape
- Add 1" to measurement for neck size



PANT SIZING

- **Hip measurement** - 6 = smallest pant waist (Ex. 40" hip - 6" = 34" waist)

COAT SIZING

- **Slim Fit Coats**
 - Chest measurement + 1" - or - Overarm measurement - 8"
 - The LARGER number is the coat size
- **Modern Fit Coats**
 - Chest measurement - or - Overarm measurement - 9"
 - The LARGER number is the coat size



HIP

- Remove items from pockets
- Stand to side and measure broadest part of hip and rear



PANT WAIST

- Measure where pants will be worn (1" under the navel is ideal)



PANT WAIST - WITH STOMACH

- Measure below the stomach if that's where the pants will be worn
- Pull tape snug for this measurement



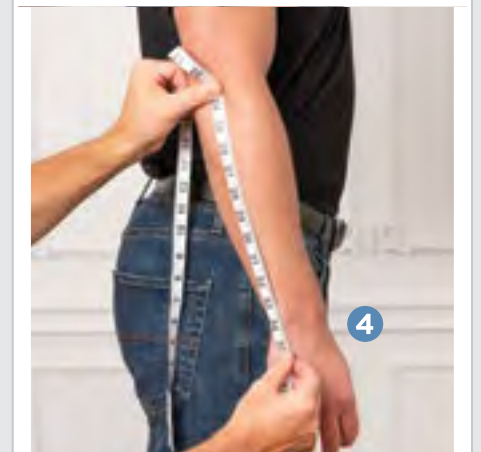
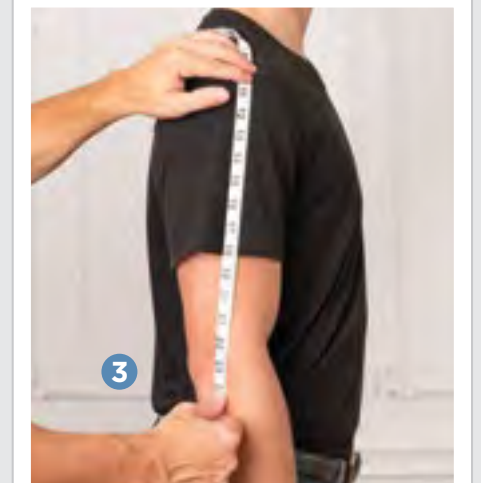
STOMACH

- Measure widest part of customer's stomach
- Helps determine shirt and coat size on larger customers
- DO NOT record as the waist measurement



OUTSEAM

- Remove shoes and look straight ahead
- Measure from the back
- Start at top of waistband and measure to the floor
- Subtract 1" for a standard pant break



SHIRT SLEEVE

- 1 Measure from base of neck centered on spine
- 2 Measure over the top of shoulder
- 3 Measure to elbow
- 4 Measure to wrist bone and add 1"

SIZE SCALE REFERENCE GUIDE

Coat Sizing Scales: Use these sizing scales as guides to see which styles are available in a particular size.

SCALE A	
MEN'S	
Regular	34-74
Portly Regular	40-60
Short	34-60
Long	36-74
Extra Long	38-66
BOYS'	
Regular	2-18
Husky	8-18
Coats available in this scale:	
820 page 47	880 page 49

SCALE A2					
MEN'S					
Regular	34-74				
Short	34-60				
Long	34-74				
Extra Long	38-66				
BOYS'					
Regular	3-18				
Husky	8-16				
Coats available in this scale:					
222 page 31	262 page 29	272 page 17	302 page 20	311 page 18	350 page 21
421 page 16	921 page 15				

SCALE B					
MEN'S					
Regular	34-66				
Short	34-56				
Long	34-66				
Extra Long	38-56				
BOYS'					
Regular	3-18				
Husky	8-16				
Coats available in this scale:					
202 page 28	221 page 33	372 page 23	392 page 25	601 page 45	712 page 43
981 page 19	990 page 27				

SCALE B2			
MEN'S			
Regular	34-66		
Short	34-56		
Long	36-66		
Extra Long	38-56		
BOYS'			
Regular	3-18		
Husky	8-16		
Coats available in this scale:			
252 page 39	602 page 46	701 page 48	822 page 41

SCALE D			
MEN'S			
Regular	34-60		
Short	34-50		
Long	36-60		
Extra Long	38-50		
BOYS'			
Regular	3-18		
Husky	N/A		
Coats available in this scale:			
201 page 30	211 page 32	588 page 50	751 page 44

Note: In size scale D, coat style 588 is available up to 68L and 68R. (All other sizing in size scale D applies.)

SCALE E		
MEN'S		
Regular	34-44	
Short	34-44	
Long	34-44	
Extra Long	38-44	
BOYS'		
Regular	N/A	
Husky	N/A	
Coats available in this scale:		
371 page 22	391 page 24	991 page 26

Note: 371 and 391 pants available in sizes 27-44. 991 pant available in sizes 18-59.

SCALE F		
MEN'S		
Regular	34-50	
Short	34-50	
Long	34-50	
Extra Long	38-50	
BOYS'		
Regular	14-18	
Husky	N/A	
Coats available in this scale:		
122 page 36	132 page 37	172 page 38

Note: Even sizes only.

SCALE G	
MEN'S	
Regular	34-66
Short	34-56
Long	34-66
Extra Long	38-56
BOYS'	
Regular	3-18
Husky	N/A
Coats available in this scale:	
182 page 35	192 page 34

Note: Even sizes only.

SCALE H	
MEN'S	
Regular	34-56
Short	34-56
Long	36-56
Extra Long	38-56
BOYS'	
Regular	14-18
Husky	N/A
Coats available in this scale:	
802 page 42	852 page 40

PANT FITS

Every detail of your ensemble is important, including your pants. Use this guide to help you achieve your preferred look.



Modern Fit Pants		
Pant Styles	Features	Waist Sizing
252	+	18-65
372	~	18-65
392	~	18-65
650	*	18-65
750	*	18-65
850	*	18-71
990	•	18-65

Slim Fit Pants		
Pant Styles	Features	Waist Sizing
202	~	18-65
211	+	18-59
221	+	18-65
222	#	18-71
251	+	27-44
262	~	18-71
272	~	18-71
302	~	18-71
311	~	18-71
350	~	18-71
371	~	27-44
391	~	27-44
921	~	18-71
991	+	18-59

Euro Slim Fit Pants		
Pant Styles	Features	Waist Sizing
N11P	>	26-44 (even sizes)
N17P	>	26-44 (even sizes)

- * pant styles with a beaded stripe
- + pant styles with no stripe
- pant styles with a faille piped leg stripe
- ~ pant styles with no stripe; includes buttons for suspenders and belt loops
- # pant styles with no stripe; includes belt loops
- > pant styles with an exact waist and belt loops - for purchase only

Please Note: Cowboy boots fit best with modern fit pants. However, they can be worn with slim fit pants when accompanied by boot straps.

PRICING INFORMATION

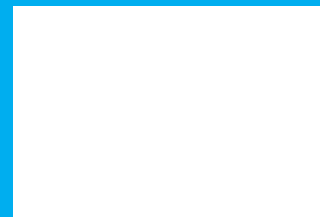
Find Tuxedos, Suits and Formal Accessories to match any budget



DIAMOND COLLECTION | Pages 15-38

Diamond Collection ensembles include:

Any pant, any basic shirt with nickel-plated jewelry, any tie and any vest or cummerbund.



PLATINUM COLLECTION | Pages 39-46

Platinum Collection ensembles include:

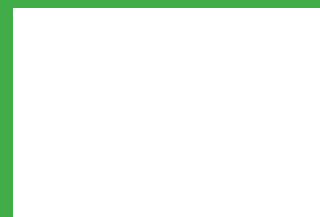
Any pant, any basic shirt with nickel-plated jewelry, any tie and any vest or cummerbund.



GOLD COLLECTION | Pages 47-48

Gold Collection ensembles include:

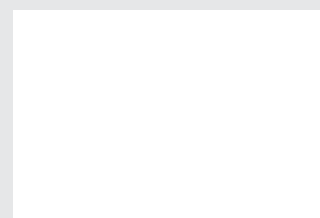
Any pant, any basic shirt with nickel-plated jewelry, any tie and any vest or cummerbund.



BUDGET COLLECTION | Pages 49-50

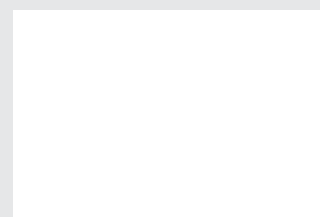
Budget Collection ensembles include:

Any pant, any basic shirt with nickel-plated jewelry, any tie and any vest or cummerbund.



POCKET SQUARES

An essential component of every ensemble, a colorful pocket square is available to match nearly every fullback vest or tie offered. Don't forget to add one to your look!



ACCIDENTAL DAMAGE WAIVER (ADW) - added to each rental

The ADW relieves you from additional charges resulting from accidental damages when they can't be repaired through normal dry cleaning or minor tailoring. The ADW does not cover malicious damages, lost or stolen items, or any late return charges.

All Tuxedo and Suit Rentals MUST be returned the next business day to avoid additional rental charges!



FOR RENTAL