

Disease Management in Poultry Production: From Biosecurity to Precision Prevention

Shashi Bhushan Sudhakar¹ and Sudhanshu Shekhar²

¹ICAR-National Institute of High Security Animal Disease, Bhopal, M.P, India

²Krishi Vigyan Kendra, Ramgarh (ICAR-RCER, Patna, Bihar), Mandu, Ramgarh, Jharkhand, India

Corresponding Author: sudha.vet@gmail.com

Introduction

Poultry production has emerged as one of the fastest-growing sectors of animal agriculture, contributing significantly to global food security, nutritional improvement, and rural livelihoods. Eggs and poultry meat are widely recognized as affordable sources of high-quality protein, essential amino acids, vitamins, and minerals. The intensification of poultry production systems, characterized by high stocking densities, genetic improvement for rapid growth, and large-scale commercial integration, has substantially enhanced productivity. However, these advancements have also increased the vulnerability of flocks to infectious and non-infectious diseases, making disease management a central component of sustainable poultry production.

Disease outbreaks in poultry farms can result in severe economic losses due to mortality, reduced growth rate, decreased egg production, poor feed conversion efficiency, treatment costs, and trade restrictions. In addition, many poultry diseases have zoonotic potential, posing risks to public health and food safety. The emergence and re-emergence of infectious diseases such as avian influenza, Newcastle disease, infectious bronchitis, and salmonellosis highlight the need for comprehensive disease surveillance and preventive health management strategies. Modern poultry health management emphasizes prevention rather than treatment, relying on biosecurity, vaccination, sanitation, and monitoring systems.

Advances in veterinary epidemiology, molecular diagnostics, and precision livestock technologies have improved the capacity to detect, prevent, and control diseases in poultry flocks. Nevertheless, disease occurrence is rarely attributed to a single factor. Instead, it results from complex interactions among host susceptibility, environmental stressors, and pathogen virulence. Understanding these interactions is essential for developing effective disease control programmes. Therefore, a systematic approach integrating scientific knowledge, farm management practices, and field experience is necessary to minimize disease risks and improve productivity in poultry enterprises.

Why disease management is now a production strategy

In practical terms, disease management is no longer a post-failure activity. It is a production strategy that protects

bird welfare and farm economics at the same time. Respiratory, enteric, metabolic, and immunosuppressive disorders often overlap on commercial farms, making diagnosis and intervention more complex than the name of the disease suggests. A flock with mild infectious pressure may still appear outwardly normal while quietly losing performance. This subclinical burden is especially important in broilers, layers, breeders, and hatchery-linked systems where small biological losses accumulate into serious financial damage. Therefore, the real aim of disease management is not simply to treat sick birds, but to keep pathogen challenge below the threshold at which productivity begins to decline.

The disease triangle on the poultry farm

Disease occurrence in poultry production is commonly explained using the disease triangle, a conceptual model that illustrates the interaction among three essential components: the host (bird), the pathogen (disease-causing agent), and the environment. Disease develops only when these three factors interact in a manner that favors pathogen multiplication and reduces the bird's resistance. The disease triangle concept provides a practical framework for veterinarians, farm managers, and researchers to understand the epidemiology of poultry diseases and to design effective control strategies.

1. Host Factors

The host component refers to the susceptibility or resistance of poultry birds to infection. Genetic makeup, immune status, age, nutrition, and physiological stress influence the bird's ability to resist pathogens. Young chicks and aged birds are generally more susceptible to infections due to immature or weakened immune systems. Nutritional deficiencies, particularly of vitamins A, E, selenium, and essential amino acids, can impair immune function and increase vulnerability to diseases. Genetic selection for high productivity traits such as rapid growth or high egg yield may sometimes compromise disease resistance, necessitating improved management and health monitoring practices.

Vaccination programmes play a critical role in strengthening host immunity against major viral and bacterial diseases. However, vaccine efficacy depends on proper administration, storage conditions, and timing. Stress factors such as transportation, overcrowding, temperature

fluctuations, and poor ventilation can suppress immune response, reduce vaccine effectiveness and increase disease susceptibility.

2. Pathogen Factors

Pathogens include viruses, bacteria, fungi, parasites, and other microorganisms capable of causing disease in poultry. The virulence, infectivity, and transmission rate of pathogens determine the severity and spread of disease within a flock. Some pathogens, such as Newcastle disease virus and avian influenza virus, are highly contagious and can spread rapidly across farms and regions. Opportunistic pathogens, including *Escherichia coli* and *Clostridium* species, often cause disease when birds are stressed or immunocompromised.

Mutation and genetic variation among pathogens can result in new strains with increased virulence or resistance to vaccines and antimicrobial drugs. The emergence of antimicrobial resistance in bacterial pathogens has become a major global concern, emphasizing the need for prudent use of antibiotics and adoption of alternative disease control strategies such as probiotics, prebiotics, phytobiotics, and improved hygiene practices.

3. Environmental Factors

Environmental conditions on poultry farms significantly influence disease occurrence and transmission. Factors such as temperature, humidity, ventilation, litter quality, stocking density, and sanitation affect the survival and multiplication of pathogens. Poor ventilation can lead to accumulation of ammonia and dust, predisposing birds to respiratory diseases. Wet litter promotes the growth of pathogens and increases the incidence of coccidiosis, colibacillosis, and footpad dermatitis.

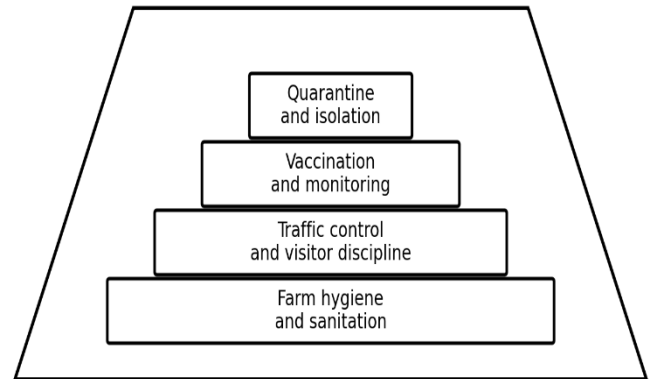
Climate change and seasonal variations also influence disease patterns by affecting pathogen survival and bird stress levels. Heat stress, commonly observed in tropical and subtropical regions, can suppress immune function and increase susceptibility to infections. Effective environmental management practices such as proper housing design, ventilation systems, litter management, and sanitation protocols are essential to minimize disease risk.

Understanding the disease triangle emphasizes that disease prevention should not rely solely on medication or vaccination but must integrate improvements in bird health, pathogen control, and environmental management.

Biosecurity begins at the gate

The most cost-effective control measure on any poultry farm is still biosecurity. Clean clothing and footwear, footbaths that are actually maintained, controlled entry of vehicles and visitors, rodent control, separation of age

groups, and proper disposal of carcasses and litter are basic but non-negotiable practices. Quarantine of new stock is equally important, especially in breeder and layer operations where infections can spread vertically or persist unnoticed. In many farms, disease starts not with dramatic negligence but with small routine failures: shared egg trays, contaminated crates, uncovered feed, or workers moving from sick pens to healthy pens without changing gear. The lesson is simple. If pathogens can move freely through the farm, treatment becomes expensive, uncertainty increases, and production stability disappears.



A layered approach reduces pathogen entry, spread, and persistence.

Fig. 1. Layered biosecurity is the first line of defense against poultry disease

Vaccination, nutrition, and immunity

Vaccination remains a central pillar of poultry disease control, but its success depends on the quality of execution. The right vaccine given at the wrong time, under poor cold-chain conditions, or in a flock weakened by stress may fail to deliver adequate protection. Hence, vaccination schedules should be designed with local disease pressure, maternal antibody status, production stage, and management system in mind. Equally important is nutrition. Deficiencies of protein, energy, vitamins, trace minerals, and water quality can blunt immune responses and worsen disease outcomes. Functional nutrition, including the use of probiotics, prebiotics, organic acids, enzymes, and carefully chosen feed additives, can support gut integrity and resilience. In this sense, immunity is not produced by a vaccine alone; it is built by the interaction of management, health, and feed quality.

Early diagnosis and surveillance

Good poultry health programs rely on early warning, not late discovery. Daily observation of feed intake, water intake, activity, respiratory sounds, droppings, egg quality, and uniformity can reveal problems long before mortality rises. Post-mortem examination remains an indispensable field skill because lesions often point to the broad category of disease even before laboratory confirmation is available. In

research and diagnostic settings, bacteriology, virology, serology, molecular assays, and antimicrobial sensitivity testing help distinguish between primary infections, secondary invaders, and management-related problems. The best farms keep records that link morbidity, mortality, feed conversion ratio, hatchability, egg production, medication use, and environmental readings. Such data are not administrative luxury; they are disease intelligence.

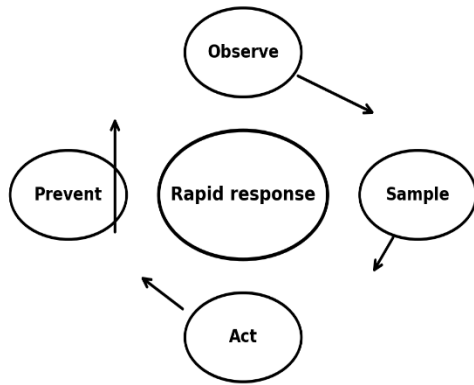


Fig. 2. Surveillance, sampling, action, and prevention form a practical control loop

Antimicrobial stewardship and responsible intervention

The era of routine, indiscriminate antibiotic use is passing, and rightly so. Poultry systems must move toward targeted intervention based on diagnosis rather than blanket medication. Overuse of antimicrobials increases resistance pressure, disturbs gut ecology, and creates longer-term public health concerns. Supportive therapy, electrolyte management, heat stress correction, and environmental improvement should accompany any treatment plan. When medication is necessary, dose, duration, withdrawal period, and route of administration must be followed precisely. For researchers, this is an area of growing importance because the future of poultry production depends on reducing reliance on antimicrobials while preserving both productivity and safety.

Common disease complexes seen in practice

In commercial poultry production, diseases rarely occur as isolated infections. Instead, multiple pathogens often interact simultaneously, resulting in disease complexes that complicate diagnosis, treatment, and control. These disease complexes are typically associated with stress, poor management, or immunosuppression and can significantly reduce flock performance. Recognizing common disease complexes helps veterinarians and poultry managers adopt integrated disease prevention strategies.

Respiratory Disease Complex: Respiratory diseases are among the most common health problems in poultry

production systems. The respiratory disease complex involves multiple pathogens, including Newcastle disease virus, infectious bronchitis virus, Mycoplasma gallisepticum, Escherichia coli, and avian influenza virus. Environmental stressors such as poor ventilation, high ammonia levels, and dust predispose birds to respiratory infections.

Clinical signs include coughing, sneezing, nasal discharge, swollen sinuses, reduced feed intake, poor growth, and decreased egg production. Secondary bacterial infections often aggravate disease severity, leading to increased mortality and economic losses. Effective control requires a combination of vaccination, improved ventilation, and strict biosecurity measures.

Enteric Disease Complex

Enteric diseases affect the gastrointestinal tract and impair nutrient digestion and absorption. Common pathogens involved in enteric disease complex include Eimeria species (coccidiosis), Clostridium perfringens (necrotic enteritis), Salmonella species, and Escherichia coli. Poor litter management, contaminated feed, and high stocking density contribute to disease occurrence.

Birds affected by enteric disease complex show symptoms such as diarrhea, poor weight gain, reduced feed efficiency, dehydration, and uneven growth. Subclinical infections often go unnoticed but result in significant production losses. Control strategies include anticoccidial vaccination or medication, good litter management, feed quality control, and use of probiotics.

Immunosuppressive Disease Complex

Immunosuppressive diseases reduce the bird’s ability to respond effectively to infections and vaccines. Important immunosuppressive diseases include infectious bursal disease (IBD), Marek’s disease, chicken infectious anemia, and mycotoxicosis. These conditions weaken the immune system, increasing susceptibility to secondary infections such as colibacillosis and respiratory diseases.

Flocks affected by immunosuppressive diseases often show poor response to vaccination, increased disease incidence, poor growth rate, and high mortality. Preventive strategies include proper vaccination programmes, use of toxin-free feed, and stress reduction.

Reproductive Disease Complex

Reproductive disorders affect egg production, fertility, and hatchability in breeder and layer flocks. Diseases such as egg drop syndrome, infectious bronchitis, avian encephalomyelitis, Mycoplasma infections, and nutritional deficiencies can impair reproductive performance. Vertical transmission of pathogens from breeder birds to chicks may occur in some infections. Proper breeder vaccination,

hygienic egg handling, and monitoring of reproductive health are essential to minimize production losses.

From outbreak response to farm resilience

When an outbreak is suspected, speed matters more than optimism. Separate affected groups, intensify sanitation, review ventilation and temperature, check water quality, and consult diagnostic laboratories early. At the same time, communication between farm staff, veterinarians, hatchery teams, and feed personnel must be tight and factual. A disease event should also trigger a review of what allowed the problem to occur: Was the downtime too short? Was litter reused too aggressively? Was the vaccine schedule appropriate? Was there a hatchery or breeder source issue? The best farms treat every outbreak as a learning opportunity. That is how resilience is built—not by avoiding all problems, but by reducing the chance of repetition.

Conclusion

Disease management remains one of the most critical determinants of efficiency, profitability, and sustainability in modern poultry production systems. With the rapid intensification of poultry farming, the risk of disease outbreaks has increased due to high stocking density, genetic uniformity, and continuous production cycles. The economic impact of diseases extends beyond mortality, encompassing reduced growth rate, poor feed efficiency, decreased egg production, increased medication costs, trade restrictions, and compromised product quality. Therefore, effective disease management is not merely a therapeutic intervention but a comprehensive preventive strategy that integrates scientific knowledge, farm management practices, and field-level vigilance.

The concept of the disease triangle highlights that disease occurrence is the result of dynamic interactions among host susceptibility, pathogen characteristics, and environmental stressors. Manipulation of any one component of the triangle can significantly influence disease outcomes. Strengthening host immunity through balanced nutrition, vaccination, and stress reduction enhances resistance to infections. Minimizing pathogen load through strict biosecurity measures, sanitation protocols, and monitoring programmes reduces the chances of disease transmission. Optimizing environmental conditions through proper housing design, ventilation, litter management, and temperature control helps maintain bird health and welfare. An integrated approach addressing all three components

simultaneously provides the most reliable method for disease prevention. The occurrence of disease complexes in poultry production emphasizes the multifactorial nature of health challenges in intensive farming systems. Respiratory, enteric, immunosuppressive, and reproductive disease complexes often involve interactions among multiple pathogens and predisposing factors, making diagnosis and control more complex. Such conditions require a systems-based approach involving laboratory diagnostics, epidemiological surveillance, and coordinated management interventions. Early detection through regular flock monitoring and diagnostic testing can significantly reduce the severity and spread of diseases.

In recent years, growing concerns regarding antimicrobial resistance have encouraged the poultry industry to adopt alternative disease control strategies, including probiotics, prebiotics, phytogenic additives, organic acids, and immunomodulators. Precision livestock technologies, biosensors, artificial intelligence-based disease prediction models, and molecular diagnostic tools are emerging as valuable components of modern poultry health management. These innovations facilitate early disease detection, improve decision-making, and support targeted interventions, thereby reducing indiscriminate drug use. From a broader perspective, poultry disease management also contributes to public health protection through control of zoonotic pathogens such as Salmonella, Campylobacter, and avian influenza viruses. The One Health approach, which recognizes the interconnection between animal health, human health, and environmental health, is particularly relevant in poultry production systems. Strengthening surveillance systems, improving farm biosecurity, and promoting responsible use of veterinary therapeutics are essential components of global disease prevention strategies.

In conclusion, sustainable poultry production depends largely on proactive disease prevention rather than reactive treatment. Adoption of integrated disease management strategies combining biosecurity, vaccination, nutrition, environmental control, and advanced diagnostic tools can significantly reduce disease burden, improve productivity, and ensure safe poultry products for consumers. Continuous research, innovation, and knowledge dissemination are essential to strengthen poultry health management systems and support the long-term growth of the poultry sector.
