

# 99-07 To 11-16 Nose Conversion Installation Instructions



## Necessary Conversion Parts (NOT included)

### All Parts for 2011-2016 Nose conversion can be OEM or Aftermarket

- Headlights (May also need newer headlight plugs depending on year )
- Hood
- Hood hinges
  - BC3Z-16796-A (Passengers Side)
  - BC3Z-16797-A (Drivers Side)
- Hood Striker (7C3Z-16K689-A)
- Fenders (Left and Right)
- Grill and Bracket
  - If a non open grill or grill inserts are used you will need a 08-10 hood latch assembly with cable, some fabrication required.
- (2) 99-07 SuperDuty hood strut lower ball bolt (Available on Website)
- Lower Grill Reinforcement (Ford Part Number#BC3Z-17A792-A)
- Upper Grill Reinforcement (Ford Part Number#BC3Z-8A284-A)
- Front Bumper and Bracket (installation not shown)
- 2011-2016 factory cowl kit or 11-16 Wiper cowl, Wiper motor, wiper transmission and linkage, wipers and possible wiring. (This kit Does not include instructions on 11-16 Cowl installation)

## Necessary Tools

- Metric Rivet Cert Gun (Astro 1427 Recommended)(Available on Website)
- Drill
- Drill Bits: 3/16", 11/32", 9/32", 1/2"
- Cut off tool w/ 3" disk
- Sawzall or Grinder (cutting)
- Chalk or Marker

**For Instructional Videos please Search Youtube.com for "McNasty Customz"**

**For Colored Pictures Please Visit <http://www.mcnastycustomz.com> and select instructions from the menu**

# TERMS & CONDITIONS

Thank you for your recent purchase of a McNasty Customz Conversion Kit. This is a Universal Kit to mount a newer style nose or dash onto a truck it was never designed to fit on. The Conversion kit will help bridge the gap from old to new but there are many things to factor in that may affect the installation and fitment such as:

- **Parts Condition**
  - New or Used
  - OEM or Aftermarket
- **Truck Condition**
  - Good
  - Straight
  - Twisted
  - Prior Accidents
  - Prior Repairs

In some cases, the installer may need to address any and or all of these issues to allow for a proper fit. If this is something the installer cannot adapt to it is **HIGHLY** recommended to seek professional help and contact your local body shop to complete the installation.

McNasty Customz LLC has no control over the installation and use of the parts once sold. McNasty Customz LLC highly recommends that certified professionals install all parts that it sells. You the Buyer, agrees that you rely on your own skill and judgment in evaluating the installation of parts bought from McNasty Customz LLC, and agree that you are solely responsible for the part's use.

You, the Buyer, agree to hold the Seller (McNasty Customz LLC) harmless from, and hereby assume the entire responsibility and liability for, any and all damage or injury of any kind or nature whatever, including death, as to all persons, whether Buyer's employees, agents or otherwise, and as to all property, including Buyer's own property, caused by, resulting from, arising out of, or occurring in connection with the use by Buyer or any other person, of any parts serviced by and or purchased from McNasty Customz LLC.

Having read this agreement and knowing these facts and in consideration of Seller accepting my purchase, I, the Buyer, for myself and anyone entitled to act on my behalf, waive and release McNasty Customz LLC, its members, shareholders, officers, directors, agents, volunteers and employees, from all claims or liabilities of any kind arising out of the installation and or use of parts sold and or serviced by McNasty Customz LLC even though that liability may arise out of negligence or carelessness on the part of the Seller.

## **Removing Old Nose**

1. Remove Hood, grill, left & right fenders, Headlights and headlight support. Be sure to remove hood first, then grill, then remove plastic wiper cowl.
  - a. Note: It is not necessary to separate and label factory hardware. Save factory hardware in a safe place/container for future use. Use factory bolts at your discretion to create the cleanest factory look. Placement and hardware length is not critical to the project.
2. Remove bolts from hood latch and hang from attached cable.

## **Preparing Truck for New Nose**

3. Trim 2" from the protruding lip off the factory upper fender support on cab, both left and right sides. Not all trucks will have this piece



## **Hood Hinges**

4. Cut factory antenna bracket off as pictured
5. Oblong all four hood hinges to resemble picture below, (The two main hood bolt holes and the two main mount holes) some vehicles may require additional modification, hole size varies from vehicle to vehicle for the lower bracket main mount holes.
6. Bolt bracket onto body.





## **Radiator Support Notching For Headlights**

7. Using template #3 (Drivers Side Headlight Template) and template #4 (Passengers Side Headlight Template) Line up template and insert 2 factory bolts in labeled holes, make sure template is pressed firmly against radiator support.



8. Trace out areas with chalk or white marker.
9. Drill out 2 marked holes with 3/16" drill bit to create pilot holes for headlight brackets on both sides
10. Remove templates and cut out marked areas using a cut off tool (wiz Wheel) or (Saw Zall). Be very careful not to damage any factory components or wiring, Especially ABS pump and windshield washer tank while making the Cut. A 3" Cut off wheel is strongly recommended for this reason.



11. Drill Pilot holes with 11/32" drill bit if inserting Rivet Certs (Nuts and Bolts can also be used with washers in no rivet gun is available. Regular Aluminum rivets also create a clean look. Rivet Certs are Strongly Recommended for ease of installation and removal).

12. Both left and right front fender supports must be trimmed for headlight installation. Measure in 3.5" from the front of the radiator support and mark off the rectangular area where the fender support is protruding as pictured.
13. Cut and remove rectangular area marked in previous step.



14. The area in front of the resulting hole must be reformed to properly fit headlights. See picture below, marked area (X) should be reformed with a hammer to make a concave area as viewed from front.



**\*Light reshaping is suggested at first, more indentation can always be added later by simply Removing headlight during final nose mock up to ensure proper fit without overdoing it**

**\*NOTE: Front to of both frame rails need to be trimmed to fit lower grill support. Trim as shown in pic. Black area must be removed as shown**

**1 1/4 in from edge and 2 5/8 down from top**





## **Installation** (*Hand Tighten Bolts Until You Are Happy With Fitment*)

15. Using Brackets #1 and #2 (fender brackets) Install the lower hood piston mount in center hole on top of the drivers side bracket



16. Place 2 supplied fender brackets on top of the fender and radiator support on each side as shown, lining up bolt holes over factory holes. Install factory bolt in rear factory hole, Install supplied 1 1/4" bolt in front fender hole and hand tighten.
17. Using a 3/16" drill bit; drill a pilot hole through the remaining forward hole next to hood adjuster through bracket into top layer of radiator support.



18. Remove both brackets by removing bolts that were hand tightened.
19. Drill pilot holes with 11/32" drill bit for NutCerts and install NutCerts, one on each side of vehicle (nuts and bolts can also be used with washers if NutCert gun is not available. Regular Aluminum rivets will work as well (not as strong). NutCerts are Strongly Recommended for ease of installation and removal.

20. Hood latch bracket installation (Bracket Pictured Below)



21. Remove two factory radiator support bolts on both sides of the hood latch, on the front of the radiator support that supports the two 45 degree angle braces (7.3 models). Place new hood latch bracket on front of radiator support. Use the 2 holes that you just removed the latch from as a reference for centering the bracket.

22. Using a 9/32" drill bit, Drill two pilot holes through the front of the hood latch bracket and single layer of radiator support. BE CAREFUL OF RADIATOR



23. Remove bracket by loosening bolts and removing

24. Re-Drill the two pilot holes through the front of the radiator support with an 11/32" drill bit and insert supplied NutCerts (nuts and bolts can also be used with washers if no rivet gun is available. Regular Aluminum rivets also great a clean look. NutCerts are Strongly Recommended for ease of installation and removal).

25. Reinstall brackets using the two factory bolts for the inner 45 degree angle supports and any two factory bolts in the outer drilled holes.



26. Attach factory hood latch to the center section using bolts that are supplied on the bracket.  
(NOTE: when attaching hood latch to the hood latch bracket use a washer on each side of the hood latch)



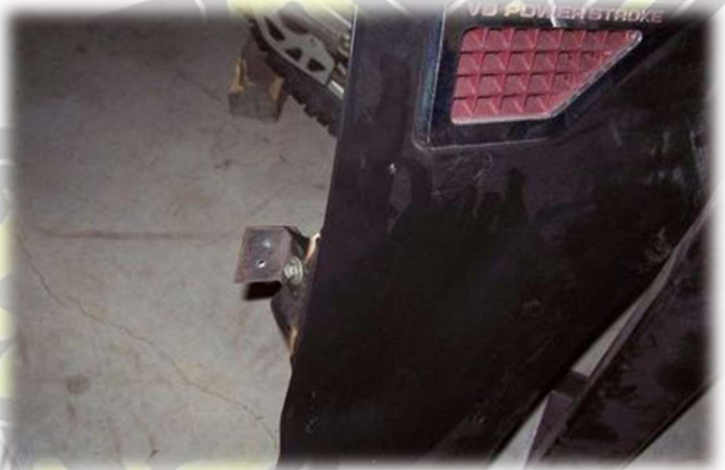
27. Depending on what grill is used in your installation, there are two methods to install the hood safety latch.
- With any open grill (XL Models) all you have to do is bend the lever down as pictured above. This allows you to reach through the grill and release hood.
  - Using a solid grill, or grill inserts, the 08-10 factory Ford uses a cable and latch mounted to a lower hood stop. If this is the grill style you are using you need to either custom make a cable release (rod release) or you need to adapt the 08-10 factory latch setup (factory 08-10 lower grill brackets where hood release lever is attached cannot be used on this conversion due to distance between radiator support and grill, custom fabrication required).

## **Fender Installation**

28. Reinstall left and right fender brackets starting with bolt closest to hood height adjuster (hand tighten to hold brackets in place do not tighten all the way).



29. Using brackets #4 and #5 insert  $\frac{3}{4}$ " – 1" factory bolt into face of insert. Attach bracket #4 to driver's side fender and bracket #5 to passenger side fender by placing brackets into fender mounts and hand tightening. (As pictured)
30. Hang each fender using a factory bolt (hand tighten) in rear hole and 1 1/4" bolt and washer in front hole (hand tighten).



31. Place two factory bolts on bottom rear of fender into rocker panel (hand tighten) repeat opposite side.
32. After both fenders are installed loosely you can begin installation of the hood.
33. Installer must use best judgment to shim hood and fenders. Shims may be placed under fenders and or brackets or behind the bolts, anywhere adjustments may be required to achieve desired look with body panel alignment. There are no for final fit shimming. Every truck is different. NOTE: supplied washers may be used in place of factory shims. Do not expect factory shims to remain in same locations or to be used at all. You may need more or less again every truck is different.
34. Drill the small factory hood piston/strut end to enlarge hole opening in order to properly fit the new ball stud. (use a  $\frac{25}{64}$ " drill bit)
35. Ball and socket can be bolted into each upper hood bracket.
36. Install hood sandwiching OEM hood hinges between hood and supplied upper hood pistons brackets as pictured below.





**NOTE:** Supplied washers may be used in place of factory shims. Do not expect factory shims to remain in same locations or be necessary. You may need more or less.

### **Grill Installation**

37. Lower grill brackets both need to be trimmed to look like picture below.

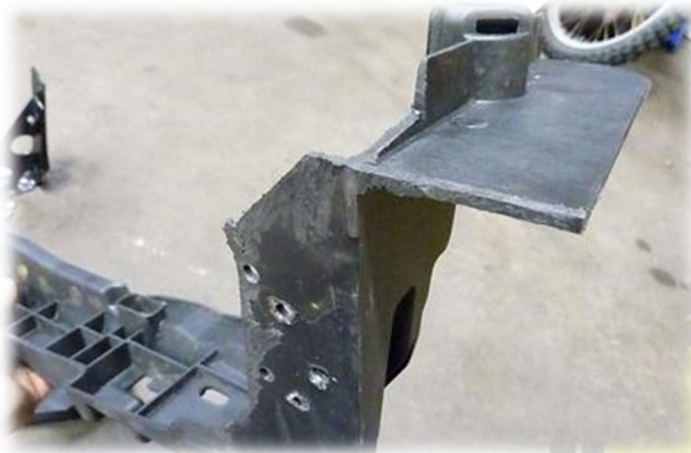


38. Passenger (right) side to be trimmed as shown below.





39. Drivers (left) side shown below.



40. Once trimmed left and right lower head light / lower grill mount brackets can be installed as shown below



41. Place a bolt in the front bracket hole, through the factor plastic hole and hand tighten. More back holes can be drilled and install nuts and bolts per installers needs.



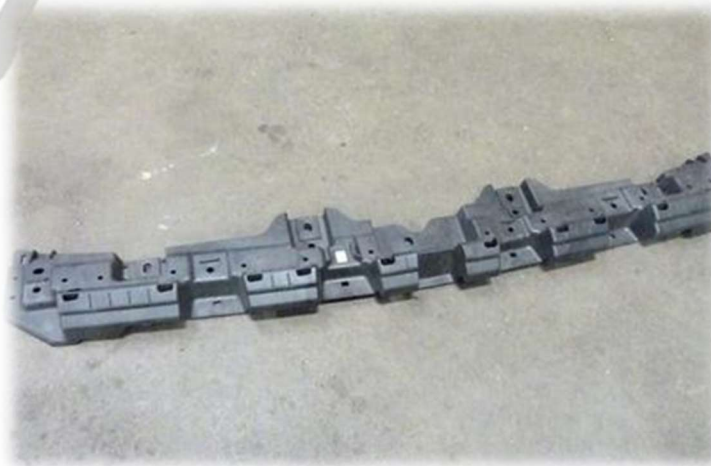
42. Left side, repeat, as pictured below.



43. Bracket can now be mounted to radiator support using the two holes marked from the original template in earlier steps as pictured.



**Upper Grill Bracket Installation (Upper Grill Reinforcement Ford Part #BC3Z-8A284-A)**





44. With four bolts mount the upper grill support to the hood support bracket as pictured below.
45. Install grill and headlights.



46. Once installer is satisfied with proper hood and fender alignment, brackets #4 & #5 can now be attached to cab. Open door, loosen each bracket slightly and push against cab. This bracket is in place to keep fender from being pushed in.
47. Bolting on the fender bracket:
- a. Option A: with door fully opened installer can use a drill to install two supplied  $\frac{3}{4}$ " #8 self-tappers (5/16" head) attaching bracket to cab.
  - b. Option B: with door fully opened, installer can scribe or mark holes, remove fender and bracket, then with a drill install self-tappers in marked areas. Reinstall bracket, then Reinstall fender.
48. It is strongly recommended that installer recheck body lines and alignments of sheet metal. Everything should be fit how installer likes at this point. Once done this kit is completely installed.

**NOTE:** On some 99-04 models you may need to change the main headlight plugs to the 05 or newer plugs ((wiring in the 3 wires per side)) Harness adapters available at [McNastyCustomz.com](http://McNastyCustomz.com)



## Available Accessories



### **11-16 Bumper Bracket Kit \$249.99**

Includes: Plates (2) Out Riggers (2)  
Frame Rail Inserts (2) Hardware Pack (1)



### **Bumper Plate Kit \$84.99**

Available for 08-10 or 11-16  
\$79.99 when purchased with Conversion Kit



### **Frame Rail Inserts \$39.99**

Weld in to box out your frame Rail where it Was Cut  
\$37.99 When purchased with Conversion Kit



### **Astro 1427 \$72.99**

Tool Used to Install Metric NutCerts



### **McNasty Customz Wiper Motor Bracket \$26.99**

Install Your Wiper Motor onto New Transmission with no modification  
\$24.99 When purchased with conversion Kit



### **McNasty Customz Headlight Adapter Harness \$34.99**

Converts a 99-04 SuperDuty Headlight plug to a 05-16  
\$32.99 When Purchased With a Conversion Kit



### **Ball Studs (2) \$17.99**

Required for Conversion. While Supplies Last



### **Body Panel Shims \$36.99**

Assorted Package of body panel shims for nose install