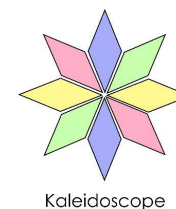


Kaleidoscope

Kaleidoscope School: Admissions Policy

We believe you can!



Introduction and Aims

The aim of the Kaleidoscope School is to provide a safe, nurturing, fun and creative environment in which children with a range of needs can access a broad and balanced curriculum. The school will focus on enriching children's experiences and developmental skills through a range of activities throughout the school day. At our school there will be an appropriate balance between - supporting children to access and make progress within a suitable curriculum, which is differentiated for their needs; Whilst ensuring we are also prioritising the developmental and life skills and focussing on building children's self-esteem and confidence. We believe this will create a holistic education plan for the children.

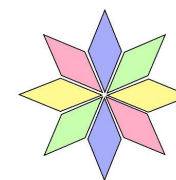
Children do not require a diagnosis to attend kaleidoscope school, however there will evidence to suggest a mainstream education environment is not suitable for their individual needs. Some examples of the underlying needs are below:

- Speech, Language and Communication
- Mild learning delay (MLD)
- FAS, PFAS, ARND, ARBD
- ASD
- ADHD
- Complex trauma history
- Sensory processing difficulties
- SEMH

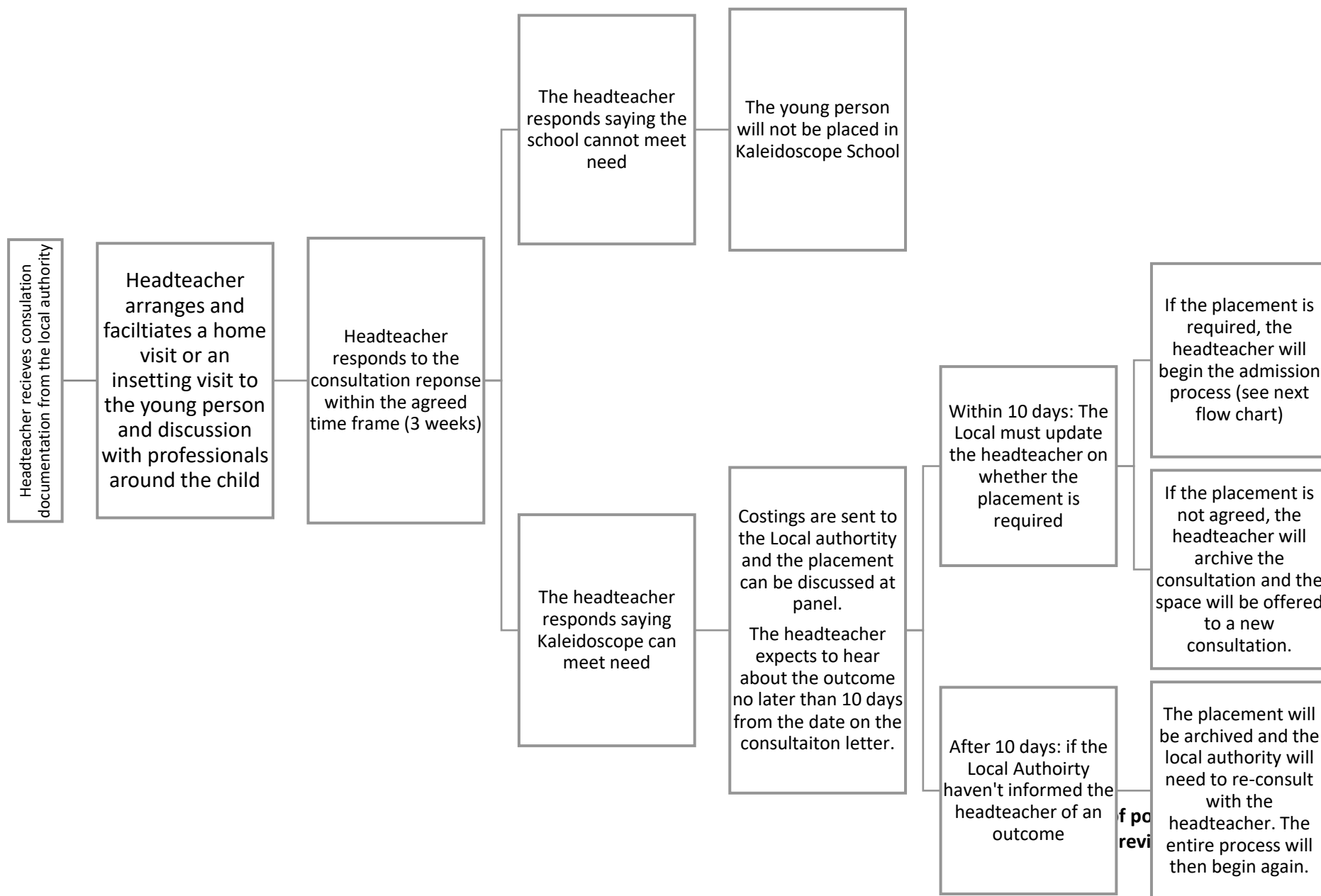
A child could begin with Kaleidoscope school at any point in the school year and any point in their primary school life. In all cases, the headteacher will liaise closely with the current school to understand the needs of the child and gather information on strategies the school have implemented to support the child. The headteacher will also liaise closely with parents/carers and child to develop a transition plan that will enable the child to successfully begin and feel safe within our school. If the child is not attending a school or is too young to attend school, the headteacher will only liaise with the parents/carers and any other external agency, if it is deemed appropriate to do so at this stage.

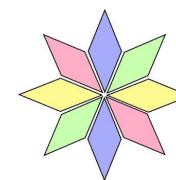
Please see below for the consultation process and admissions flow chart:

Date of policy: November 2021
Date of next review: September 2024



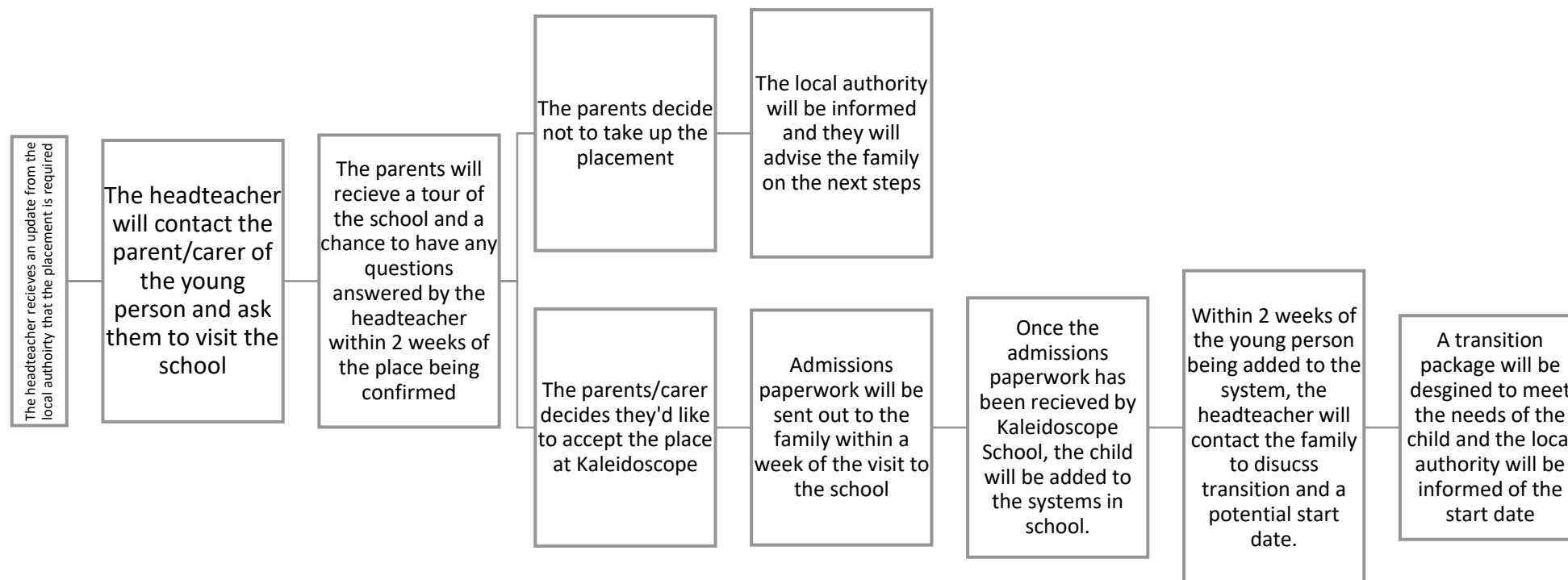
Kaleidoscope





Kaleidoscope

Once a placement has been agreed with the Local Authority, the following process will begin:



Date of policy: November 2021
Date of next review: September 2024