

RHODES 44

JAMES FORD RHODES
HIGH SCHOOL LIBRARY



JUNE '41



James Ford Rhodes Alumni Association 2022

JAMES FORD RHODES HIGH SCHOOL



CLASS
JUNE - 1941



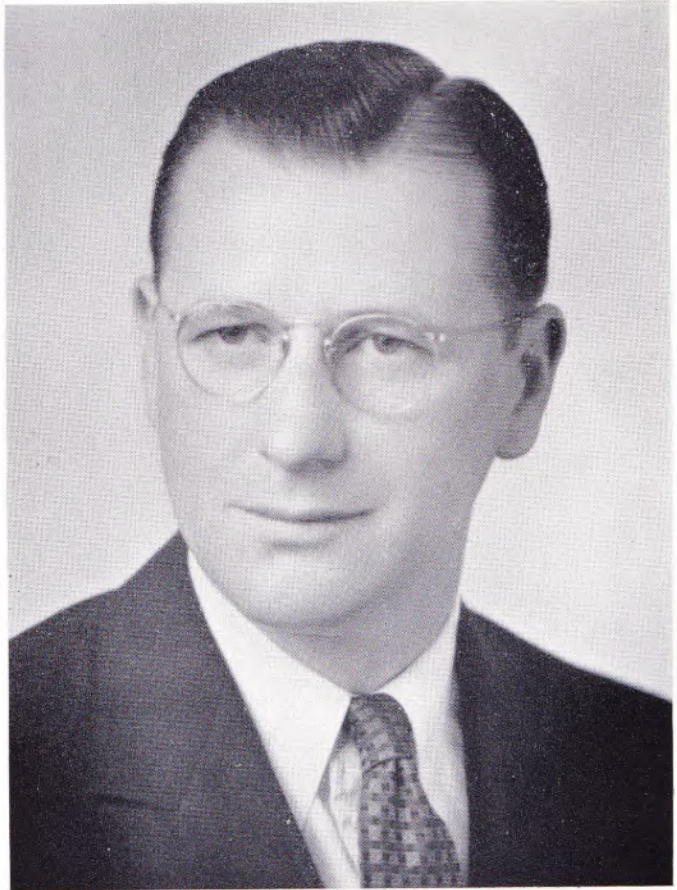
Neil D. Mathews

These are days of tragedy throughout the world. At no previous time in our history has the future looked so uncertain. It is possible that what we have known as our American way of life may be lost in the confusion of a world struggle.

It is my hope that you who have spent the past few years at Rhodes High School will be willing to sacrifice much in order that the desirable elements of our democratic way of life may not perish. Only if we of the present generation are willing to earn them for ourselves, can the privileges of democracy be preserved for us and those who come after us.

My sincere good wishes go to each member of the class of June, 1941.

NEIL D. MATHEWS



E. J. Holden

Mr. Holden

In an attempt to show our appreciation for your co-operation with our class and for your sincere counsel and guidance both on the track and in the classroom, we humbly express our gratitude by dedicating this Class Book, as we feel that you are deserving of this recognition.

THE SENIOR CLASS

CLASS OFFICERS



PRESIDENT
Stanley Blackburn

VICE-PRESIDENT
Steve Dziama

TREASURER
Dorothy Brandt

SECRETARY
Dorothy Demchik

SOCIAL CHAIRMAN
Glendene Markham

Class Motto

"When we build, let us think that we build forever"

Class Flower

Talisman Rose

Class Colors

Garnet and Sand

LUCILLE ABE
"Lu"

Art Club, Nature Club, Girls' Leaders Club, Boosters' Club, Class Color Committee, 11A Social Committee, Student Announcer, Radio Guild

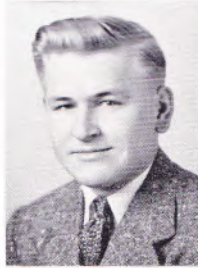


NANETTE BARTELL
"Nan"

Choir, Glee Club, Nature Club, 11A Social Committee, Girls' Sextette, Commencement Chairman of Announcement Committee

AMIEL ADAMCZYK
"Adams"

Intramural Baseball



ROBERT R. BASISTA
"Buzz"

College Club, Curiosity Club, Chem. Laboratory Assistant, Intramural Sports

MAX ADAMCZYK



HELEN BENCHO

CAROL ANNE ADKINS

Sr. Friendship Club, Choral Club, Art Club, Music Appreciation



MARTHA BENEDEK
Chorus, Choral Club

JANE ADLER
"Janie"

Glee Club, Choir, Girls' Leaders Club, Army and Navy Game, Chorus



STANLEY A. BIALEC
"Bosco"

ALMA BALZER

Glee Club, Choral Club



DOROTHY BIESINGER
"Dottie"

Orchestra, Senior Friendship Club, Latin Club, Chorus, Jr. Friendship Club, Sports

EDWARD BARDIS

Varsity Football, Boys' Leaders Club, Varsity "R" Club, Bowling Team, Intramural Sports



STANLEY BLACKBURN
"Stan"

Chairman of Year Book Committee, Sigma Delta Phi Hi-Y, Radio Operator, Boosters' Club, Intramural Bowling

GEORGE BODNER
"Bode"

Freshman Basketball, Intramural Sports, Glee Club



MARJORIE BROWN
Jr. Journal, Rhodes Review, French Club

DOLORES BOETTNER
"Dee"

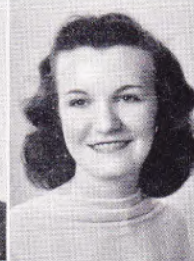
College Club, Book Club, Sr. Friendship Club, Honor Society, German Club, Home Economics Club



ALBERT BRUGGEMEIER
"Zooks"
Choir, Glee Club, Hockey

TED C. BORZAK

Boys' Leaders Club, Honor Society, Rho. Mercurius Chi, Varsity Track, Varsity "R" Club, Sciences Club



MARGARET BUB
"Bubbie"
Treasurer of Boosters' Club, Art Club, Nature Club, Sr. Friendship Club, 12A Social Committee, Sports

HAROLD J. BRANDES
"Hal"

A Capella Choir, Boys' Octette, Glee Club, Madrigal Singers



JESSIE BUCZYNSKI
Choral Club

DOROTHY BRANDT
"Dukie"

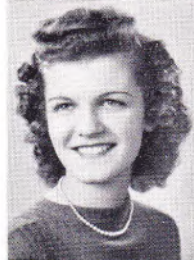
Girls' Leaders Club, German Club (Sec.), Art Club, Nature Club, Boosters' Club, Secretary-Treas. of National Honor Society, 1940 Track Queen, Dramatics Guild, Student Announcer, Radio Guild



MARY ELLEN BURDORFF
A Capella Choir, Glee Club, Boosters' Club, Friendship Club

AUDREY BRED A
"Bunnie"

Girls' Leaders Club, A Capella Choir, Glee Club, Art Club, Nature Club, Boosters' Club, Chorus, Jr. Friendship Club, Sports, Year Book Committee



FRANK BURGET
Boosters' Club, Chairman

MARGARET BROWN
Rhodes Review, Choral Club



ARLINE BURBSBY

RICHARD BUSH
"Dick"

Track, Varsity "R" Club, Cross Country Manager, Jr. Foreign Affairs Council

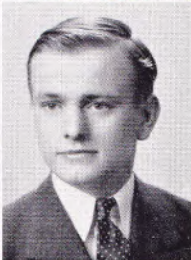


OLGA M. CLISCHE
"Ollie"

Chorus, Choral Club, Home Economics Club, Bowling

JUNE MARIE BUTLER

Sr. Friendship, Rhodian Rollers, Art Club, Choral Club



RAYMOND CISMAN
"Ray"

Baseball, Intramural Basketball

DORIS CAMPBELL

"Soupy"
Girls' Leaders Club, Treasurer, 11A, 12B Class Vice-president, Whirl Club



TONY COLJOHN
"Blackie"

Football, Wrestling, Glee Club, Student Council, Varsity "R" Club, Baseball, Intramural Bowling, Shop Foreman

WILLIAM CASH
"Bill"



JANE CROUCH
"Janie"

Sr. Friendship Club, Art Club, Glee Club, Choir

ANN CEHLAR
"Pudgy"



DOROTHY DEMCHIK
"Duchess"

National Honor Society, Chairman of German Club, Sr. Friendship Club, Pres. College Club, Dramatics Guild, Glee Club, A Capella Choir, Community Fund Speaker, Jr. Friendship Club

MARJORIE JANE CHOWANETZ
"Marj"



MARY DEMKO
Bowling

EDWARD A. CHUHNA
"Eddie"

President of A Capella Choir, Boys' Glee Club, Boys' Octette, Sigma Delta Phi Hi-Y



ANNE M. DE NARDIS
"Dinny"

Friendship Club, Latin Club, Vice-president of Choral Club, Boosters' Club, Sports

IDA R. DiLELLIS
"Tiny"
Choral Club, Art Club, Sports



THOMAS EATON
"Wolf"
Hockey Club, Hockey, Intramural Sports

ROBERT JAMES DINDA
"Bob"
Honor Society, German Club, Pres. of Airplane Club, College Club, Orchestra Studio Orchestra



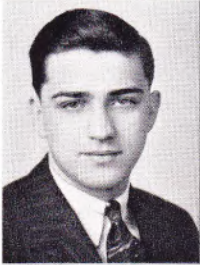
MARILYN EBNER
A Capella Choir, Secretary of Glee Club, French Club, Boosters' Club, Madrigals, Sextette, City Duet Contest, City Vocal Contest, Operettas

DOROTHY DOEBELE



PHILIPPINE EGGIMANN
"Phil"
Whirlo Club, German Club, Bowling

HARRY DOHANL



ANNETTE EHMAN
"Ehms"
Book Club, Boosters' Club, Sr. Friendship Club, 12B and 12A Social Committee, Choral Club

ELAINE DRESS
Chorus, Choral Club, Glee Club, Choir



HAZEL IRENE ESCHWEILER
Choral Club

MARGARET A. DURICKO
"Michael"
Sports, Sr. Friendship Club



JUNE FELBER
"Turtle"
Jr. and Sr. Friendship Club, Nature Club, Girls' Leaders Club, Latin Club, Class Prophecy Committee, Radio Speech Guild, Dramatic Guild, Rhodes Review, Jr. Journal, Honor Society, Student Announcer, Student Council

STEVE DZIAMA
"Russian"
Pres. of Boys' Leaders Club, Varsity Football Capt., Basketball Capt., Track Capt., Visual Aids Club, Sigma Delta Phi Hi-Y



ETHEL FIELDS
"Cobina"
12A Social Committee, Pres. of Whirlo Club, Girls' Leaders Club, Band, Orchestra, Little Symphony, Commencement Solo, Sports, Rhodes Review, Student Council Sec., National Music Rating, first

EDWARD FISCHER
Senior Band, Chorus



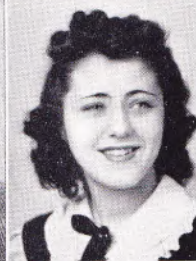
CARL GALETZ
"Curly"

MILTON FORGATCH
"Pimple"
Dance Band, Pres. of Sr. Band



DONALD GALLAGHER
"Doc"
Chorus, Glee Club

STANFORD FOULTZ
"Stan"
Honor Society, Varsity, Wrestling,
Pres. of Latin Club, Spring Play, Sig-
ma Delta Hi-Y, Sports Editor of
Rhodes Review



DORIS GATZ
National Honor Society, Sec. of Latin
Club, Sr. Friendship Club, Book Club,
College Club, Spring Play, Little
Symphony, Ring Group, Music Appre-
ciation Club, Orchestra, Dramatics
Club

RITA FRIDRICH
"Fritz"
Choral Club



JEANNE M. GEIGER
Whirlo Club, Latin Club, Sr. Friend-
ship Club

HELEN FURJANIC
"Pug"
Bowling



NANCY GILDERSLEEVE
"Blondie"
Art Club, Whirlo Club

GERTRUDE GAERTNER
"Trudy"
Pres. of Choral Club, Voice Culture



EDMUND GIORGIONE
"Beard"
Varsity and Reserve Football, Vice-
pres. of Boys' Leaders Club

NOREEN GAFFNEY
"Gaff"
Friendship Club, Latin Club, Book
Club, Ring Group, Dramatic Club



RUTH C. GOLKE
Glee Club, Choral Club, Whirlo Club

EARLYN GRAB
"Glo"

Boosters' Club, Jr. Friendship Club,
12B Social Committee, Student Council,
Sports, Army and Navy Game



RUTHIE HEISE
Glee Club, Choral Club

WILLIAM GRADY
"Tom"

College Club, 12B and 12A Social
Committee, Sigma Delta Phi Hi-Y,
Intramural Sports



ELAINE HENDRIECH
"Henny"
Art Club, Glee Club, A Capella Choir,
French Club, National Honor Society,
National Contest, City Instrumental
Contest, 1st

ANNETTE GRIEGER
"Nang"



JUNE HEROLD
"Junie"
Sr. Friendship Club, Boosters' Club,
Choral Club

GEORGE RAYMOND GUSCOTT
"Bocky"



VIRGINIA HERRMANN
"Gin"
National Honor Society, Library As-
sistant, Latin Club, Nature Club

HENRY HALLER
Industrial Arts Foreman, Boosters'
Club



ARTHUR HOBZEH
"Art"

EINAR HANSEN
"Dykes"
A Capella Choir, Glee Club



DORIS HOLLOWAY
Little Symphony, Orchestra, A Capella
Choir, Musis Appreciation, Harpist,
Band.

JOYCE LYNN HEINZ
Jr. and Sr. Band, 12B Social Commit-
tee



WILLIAM C. HOLMAN
"Bill"

CORDON C. HOWER
"Homer"

Pres. of National Honor Society,
Work and Win Club, Pres. of Sr.
Band, Dance Band, French Club, Lit-
tle Symphony, Music Contest Winner



MARGARET E. JONES
"Jonesy"

National Honor Society, Tres. of Ger-
man Club, Glee Club, A Capella
Choir, Radio Guild, Dramatic Guild,
Sr. Friendship Club, Art Club, Nature
Club, Boosters' Club, College Club,
Class Flower Committee

IRENE HNAT
"I"

Home Economics Club, Sports



BETTY JUROKA
Friendship Club

KENNETH HUGO
"Ken"

Cross Country Track



PAUL J. KATZEN
"Curly"
National Honor Society

JACK C. HUGHES
"Twinkletoes"

Football, Track, Boys' Leaders Club,
A Capella Choir, Glee Club, Varsity
"R" Club, Intramural Sports, Dra-
matics



DANIEL J. KEMENY
"Danny"
Football, Track, Capt. of Varsity Ice
Hockey Team, Social Chairman of
Boy's Leaders, 12A Social Committee
Sigma Delta Phi Hi-Y

DORIS HUMPAL
"Dump"

National Honor Society, College Club,
Sr. Friendship Club, Latin Club, Art
Club



JAMES KILBANE
"Killer"
Industrial Arts Foreman, Freshman
Track Man

JOHN JAKUBKO
"Pal"



DONALD KITSTEINER
"Kits"

BETTY JAMES
"Blondie"

National Honor Society, French Club,
A Capella Choir, Girls' Glee Club



GENEVIEVE KLEINPELL
"Morning Glory"
Art Club, Choral Club

RUTH L. KLOMFAS
"Klompie"

Glee Club, Choir, Nature Club,
Chorus



MILDRED KUBALA
"Milly"

Chorus, Glee Club, A Capella Choir,
Latin Club, Girls' Leaders Club, Stu-
dent Council, Intramural Sports

RAYMOND KOLKE
"Ray"

German Club, Visual Aids, Sigma Del-
ta Phi Hi-Y, Operator of Movies,
Tennis and Bowling Teams



BETTY KUEBLER
"Keets"

Girls' Leaders Club, French Club, Art
Club, Glee Club, Boosters' Club, Girls'
Sextette, A Capella Choir, 12B Treas-
urer, Army and Navy Game, Sports

STELLA KOPCZYK

Choral Club, Intramural Sports



JEAN KUNTZ

EUGENE KONEWICKE
"Konny"

Freshman Track



JEAN LAMOUREUX
"Lammie"

Sr. Friendship Club, Ring Group, Latin
Club, French Club, College Club,
Book Club, Dramatic Club, Band, Or-
chestra, Music Appreciation Club

IRENE KORSGAARD

German Club, A Capella Choir, Chor-
al Club

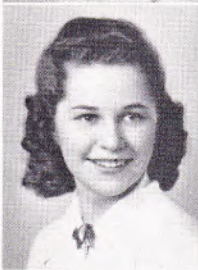


MARION LOUISE LANGE
"Jimmy"

Jr. Friendship Club, Sr. Friendship
Club, Boosters' Club, Latin Club,
Choral Club, Jr. Classical League

ANN MARIE KORSNYAK

Girls' Leaders Club, Home Economic
Club, Sports



MILDRED LAPPY
"Cuddles"

Whirlo Club

HAZEL KORTZ
"Snooks"

Choral Club, Chorus, Sr. Friendship
Club



LOIS JEAN LAUX
"Lauxie"

Glee Club, A Capella Choir, Chorus,
Vice-pres. Girls' Leaders Club, French
Club, Boosters' Club, Art Club, Sec.
of Jr. Foreign Affairs Council, Sports,
Army-Navy Game

MARYANNA LAUX

Boosters Club, Cap and Gown Committee, 12B Social Committee, Intramural Sports



DORIS LISTER
"Liste"

National Honor Society, Latin Club, Jr. Journal

LESTER LEAHY

Wrestling Manager, Band, Sigma Delta Phi Hi-Y, Intramural Wrestling



MARY A. LOBAS

Home Economics Club, Sr. Friendship Club

MATHEW LEICHER

"Matt"



HELEN LOEFFLER

"Lef"

Whirlo Club, Band, Art Club, Sr. Friendship Club, Boosters' Club, Dramatics Club, Clothing III Pres., Sports

DAGMAR SIGRID LEWIS

National Honor Society, French Club, College Club, Choral Club, Art Club, Sr. Friendship Club, Boosters' Club, Student Council, 12A Class Colors Comm., 12B Social Committee, Ice Skating Club



ALBERT LORENZ, JR.

"Al"

Orchestra, A Capella Choir, Glee Club

SHIRLEY LIEBERMAN

"Shirl"

Latin Club, Associate Editor of Rhodes Review



CLEMENT THOMAS LOSHING

"Moan"

National Honor Society, Treas. of Delta Hi-Y, Track, Science Club, Chemistry Lab. Assistant, Sports

DONALD R. LINGRUEN

"Don"

Hockey, Football and Basketball Manager, Social Committee



BETTE LUZIUS

"Lutz"

College Club, Book Club, German Club, Jr. and Sr. Friendship Club, National Honor Society, Wohica Club

LOIS LINK

"Bonnie"

Latin Club, Book Club, College Club, Sr. Friendship Club, National Honor Society, Jr. Journal, Chorus

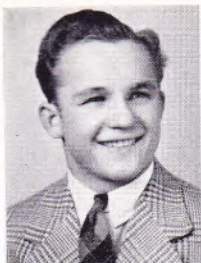


NORA MACRON

National Honor Society, French Club, Art Club, College Club, Student Council

JOE MALINOWSKI
"Tarz"

City and State Champ. in Wrestling,
Boys' Leaders Club, Apparatus



QUENTIN MCKENNA
"Mac"

National Honor Society, French Club,
Sigma Delta Phi Hi-Y Club, Wrest-
ling, 12A Social Committee, Intra-
mural Sports

WALTER MALEK
"Wally"



JEAN McCLELLAN
"Scottie"

French Club, Boosters' Club, Student
Council

GLENDEN MARKHAM
"Glenny"

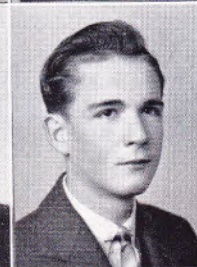
Valedictorian of Class, National Hon-
or Society, Girls' Leaders Club,
French Club, Work and Win Club,
Art Club, Nature Club Sec., Boosters'
Club, 12A Social Committee



EUGENE A. MEIER
"Gene"

Sigma Delta Phi Hi-Y, Dramatics
Guild

EDMUND J. MASUGA
"Beast"



JOHN MEISER
Science Club

AGNES MATEY

Home Economics Club, Sr. Friendship
Club, Chorus, 12B Social Committee,
Sports



ROSALIE MELNESCHUC

Glee Club, Boosters' Club, Choral
Club, Sr. Friendship Club, Sports

BETTY MCGREGOR
"Mac"

A Capella Choir

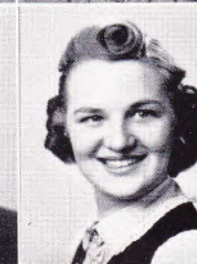
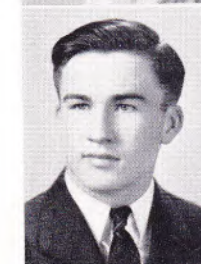


LaVERNE MELVIN

Nature Club, Boosters' Club, Choral
Club, Sr. Friendship Club, Sports

RICHARD MCGINTY
"Mick"

Football, Student Council, Glee Club,
Boys' Leaders Club, Varsity "R" Club,
Intramural Sports, Choir



JOAN MEYER
"Jo"

Girls' Glee Club, A Capella Choir,
Chorus, Girls' Sextette, Student
Council, Rhodes Review Staff, Boost-
ers' Club, Year Book Committee

JESSIE MICHOL
"Aggie"

Choir, Girls' Glee Club, Girls' Leaders Club, Sec., Girls' Sextette, Student Council



VERONICA MUDRY
"Verne"

Choral Club, Sports

MARGARET M. MIHALY
"Marge"

Home Economics Club, Sr. Friendship Club

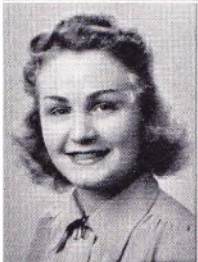


JEANNE MUELLER

Treas. of Work and Win Club, National Honor Society, Sr. Friendship Club, College Club, Glee Club

MARJORIE MILLETT
"Marny"

Art Club, Whirlo Club, Sr. Friendship Club, Choral Club



BILL MUSOLF

"Moose"
Co-Captain of Wrestling

MARIE A. MOLCHAN

Choral Club



MARION NEMEC

"Mitzi"
Chorus, Glee Club, Art Club, Sr. Friendship Club, Rhodian Rollers Club, Boosters' Club

EVELYN LOUISE MONTGOMERY
"Monty"

Nature Club, Drum Majorette, Girls' Gym Leaders Club



JUNE NEUMAN

IRENE I. MORIAK

Sr. Friendship Club, Boosters' Club



DORIS MAE NOONBURG

Boosters' Club, Go-to-College Club, French Club, Honor Society

ANNE J. MUDRY
"Annie"

Sports



CHESTER NOVAK

"Chet"
Boosters' Club, Intramural Sports

JOHN OFCAR
Rhodes Publicity Club, Boosters' Club,
Intramural Sports



JANE PERDUE
Girls' Sextette, Glee Club, Chorus
Madrigals

ALYCE OLENBURG
"Frenchie"
Glee Club, A Capella Choir, Band, Sr.
Friendship Club, Chorus, Madrigals,
Orchestra



WILLIAM PLUMER
"Plum"
Reserve Basketball, Student Council,
Chemistry Lab. Assistant, Science
Club, Vice-pres. of Sigma Delta Phi
Hi-Y

ARTHUR OLSHEFSKI
"Sally"
Art Club



JEAN PODHRADSKY
"Brenda"
Choral Club, Glee Club, Choir, Army
and Navy Basketball, Sports

PAUL P. ONDO
"Don Pablo, Pasquali"
Track, Student Council, Social Com-
mittee



JOHN POBEREZNI
Track, Cross Country, Glee Club

CHARLES OPER
"Chick"
German Club, Sigma Delta Phi Hi-Y,
Radio Announcer, Track



LEW W. POTTS
"Senator"
National Honor Society, Sigma Delta
Phi Hi-Y, Latin Club

LILLIAN ORLANDI
"Lil"
Girls' Leaders Club, Art Club, Nature
Club, Whirlo Club, Glee Club, Choir,
Girls' Sextette, Band, Madrigals Sing-
ers, Student Council, Boosters' Club,
Sports



CLARICE POWELL
"Sis"
Sr. Friendship Club, Boosters' Club

BETTY JANE PAINE
Sports



RUTH POWELL
"Sis"
Sr. Friendship Club, Boosters' Club

JACK POWELL

Track, Foreman's Club, Wrestling, In-
tramural Sports, Science Club



NORMA M. ROWE
"Norm"

Choral Club, Sr. Friendship Club,
Rhodian Rollers' Club

RUTH PRESLAN

Glee Club, Choral Club



MARIAN RUDOLPH
"Rudy-Toot"

Choral Club, Glee Club

LORETTA PRETZER

Go-to-College Club, Girls' Glee Club,
Sr. Friendship Club, National Honor
Society, Choral Club



ROBERT RUNYAN
"Bob"

Photography Club, Whirlo Club, Sci-
ence Club

ROBERT RATH

"Bob"

German Club, Go-to-College Club



BERTHA RUZICKA
"Birdie"

Sr. Friendship Club

LOIS RIEMAN

"Fanny McGoogle"

National Honor Society, Glee Club,
Pres. College Club, Latin Club, Sr.
Friendship Club, Student Council



JANET KAY SAVAGE

Chorus, Nature Club, Boosters' Club,
Friendship Club

ROBERT C. REIMER

"Bob"

Printing Foreman, Glee Club



YOLANDA A. SCHALZITTI
"Jo"

Choral Club, Sports

ROBERT H. REHBURG

"Bob"

National Honor Society, Alpha Hi-Y,
Vice-president Hi-Y Council, Band,
Studio and Concert Orchestra, Drum
Quintette



ELEANOR L. SCHAFRICK
"Butch"

VIRGINIA HENRIETTE SCHIEVE
"Gina"

Sr. Friendship Club, National Honor Society, Spring Play, Home Economics Club, Nature Club, Radio Guild



EDITH SEMONES
Chorus, Choral Club

ARNOLD SCHINKE



EDWARD SHORTS
"Curley"
Freshmen Basketball, Reserve Basketball, Track, Track Club

CAROL SCHMOCK

A Capella Choir, Glee Club, Choral Club



EDWARD SIDOR
"Feather"
Boosters' Club

VIRGINIA SCHROEDER
"Ginny"

Sr. Friendship Club, Nature Club



VIRGINIA SIENNICKI
Latin Club, Book Club, College Club, Art Club, Jr. and Sr. Friendship Club, Music Appreciation Club, Band Orchestra, Little Symphony, Cleveland Music Contest, National Contest

VIRGINIA MAE SCHULTZ
"Ginny"

Chorus, Choral Club, Boosters' Club, Sr. Friendship Club, Whirlo Club



DOROTHY SIMEK
"Dotty"
Sr. Friendship Club, Dramatic Guild, 12A Social Committee, Boosters' Club, Dramatics

CAROL SCHUUR
Glee Club, Friendship Club



CARL SITZLER

JANE SELZER
"Selz"

Editor of Rhodes Review, Band, Orchestra, Little Symphony, Nature Club, Jr. Friendship Club, Boosters' Club, 12B Social Committee, Jr. Journal, Writing for Print



JAMES SKINNER
"Jimmie"
Wrestling, Track, Intramural Sports

HENRY JOHN SKONEZNY
"Hank"

A Capella Choir, Boys' Glee Club,
Madrigals



VIRGINIA SPAHR
"Blondie"

Chorus, Choral Club, Treas. of Girls'
Glee Club, A Capella Choir, Sr.
Friendship Club, Boosters' Club

ANN SKOTSCHIR
"Scotty"



MAE SPILKER
"Sis"

Choral Club

ELAINE SMIRT
"Smirty"

Girls' Leaders Club, French Club, Art
Club, Boosters' Club, Jr. Foreign Af-
fairs Council, 11A Class Treasurer,
12A Social Committee, Football
Queen 1940, Track Queen 1941,
Army-Navy Basketball



JOE STECIOW
"Duke"

CHARLES SMITH

National Honor Society, Nature Club,
Year Book Committee, Rhodes Re-
view Photographer, Pres. of Boys'
Photography Club, Science Club,
Chemical Lab Assistant



WILLIAM A. STEJKOV
Boys' Glee Club

WILLIAM RUTLEDGE
"Bill"

President of Student Council, Na-
tional Honor Society, Treasurer of
French Club, Varsity Cross Country,
Track, Science Club, Sr. Band, Sigma
Delta Phi Hi-Y, Spring Play



ROBERT SWAFFIELD
"Bob"

ISABELLA SOMOLES
"Bella"

Choral Club, Chorus



MARY SWEENEY
"Mare"

Sports, Boosters' Club

RUTH SOMMERFELDS



EUGENE TARNAWA
"Turtle"

Drum Major, Leader of School Dance
Band, Boosters' Club, Little Sympho-
ny, Music Contest Winner

EDWARD TOOLIS
"Rat Legs"

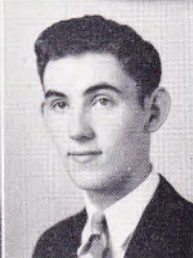
Pres. of Wohica Club, Nature Club,
French Club



VIOLET VOIGT

ALICE TROYAN
"Ally"

Girls' Gym Leaders Club, Boosters' Club, College Club, Rhodian Rollers' Club, Army-Navy Basketball, Sports



RICHARD WAITE
"Dick"
Rhodian Rollers

CLYDE TUSSEY

Pres. of Boosters' Club, Pres. of Sigma Delta Phi Hi-Y Club, Vice-pres. of National Honor Society, Spring Play, On Announcing Staff, Community Fund Speaker, French Club, Class Will Committee, Pres. of Rhodes Hi-Y Council



JAYNE WALKER
"Red"

Art Club, French Club, 12A Social Committee, Jr. and Sr. Friendship Club, Rhodes Review Business Manager, Jr. Journal, Will Committee, Boosters' Club, Hockey Club

RUTH URBAN
"Urbie"

Jr. and Sr. Friendship Club, Jr. Journal, Whirlo Club, Boosters' Club, Student Council, Sports



DOROTHY WARHOLAK
"Dotty"

Jr. and Sr. Friendship Club, Chorus, Glee Club, Nature Club, Whirlo Club, Boosters' Club, Sports, Choral Club, 9th Grade Dramatics Club

GLORIA ULMICHER
"Mimi"

Chorus, Choral Club, Boosters' Club



JOHN WEBER
"Scoop"

Basketball, Reserve Football, Ping Pong Team, Intramural Baseball and Bowling

DORIS VAN KANNEL

Chorus, Choral Club, Nature Club



ROBERT WEEKLEY
"Cosmo"

National Honor Society, Pres. of German Club, Sigma Delta Phi Hi-Y, Movie Operator, Visual Aid, Photography Club, Class Prophecy Committee

JULIUS VITKOVICS



FRANCES WEHAGEN

Choral Club, Sr. Friendship Club, Art Club

RUTH WEISE
"Fifi"

Chorus, Choral Club, Boosters' Club,
Jr. and Sr. Friendship Club



MARJORIE YONKER
"Mutch"

Jr. Journal, Sports Editor of Rhodes
Review, Orchestra, Jr. and Sr. Friend-
ship Club, Garden Club, Wohica
Club, Boosters' Club, German Club,
Vive-pres., National Honor Society,
Nature Club, Go-to-College Club

STEVE WIDLAK
Boys' Glee Club



BETTY YOUNG
"Youngum"

Glee Club, Latin Club, Jr. and Sr.
Friendship Club, Boosters' Club,
Choral Club, Sports

STEVE WILCYNYSKI
"Pee-Wee"
Intramural Sports



EDWARD YUGULIS
"Ed"

Sports

KATHERINE WILLIAMS
"Katy"
Jr. Friendship Club



LOTTIE S. ZAWADA
"Dictator"

Home Economics Club, Choral Club,
Chorus, Boosters' Club, Pres. of Girls'
Leaders, Whirlo Club, Army-Navy
Team

RALPH WILSON
Wrestling



MARTHA ZAYKOWSKI
"Marty"

National Honor Society, Nature Club

ROBERT WITENHAFFER
"Bob"



MARY ROENIGK
"Sis"

Sports, Choral Club, Boosters' Club,
Hockey Club, 12B Social Committee

JOHN YAKIR
Foreman



COLETTA KLINGBEIL

Sr. Friendship Club, Jr. Journal,
Rhodes Review, Boosters' Club,
Ring Group

MARION OSTERLAND
"Ossie"

Chorus, Choral Club, A Capella
Choir, Glee Club

NORMA SMITH

CLASS HISTORY

Friends, Rhodians, and SENIORS, we bring before you a modest panorama of four years of study, friendship, and fooling around.

Four long years ago, three hundred and two freshmen, now proud and lofty seniors, feelin' kinda' funny and looking worse, stumbled up the hard stone steps of this building, erected in honor of America's greatest historian.

In our obscure freshman year, highlighted only by the stellar performances of a few, we made little history in the life of Rhodes. Steve Dziama and Bill Plumer were the first to emblazon their names upon the sports page of the Rhodes Review as outstanding bucketballers. Today we find Steve Dziama captain of three varsity squads. Bill Plumer, still—well, still—fooling around.

As 9A's, the class won renown with Hughes' sensational wrestling pin in the freshman tournament—Jackson was flattened before he started. Dan Kemeny stepped into the freshman spotlight by showing extra skill in the Discovery Day track meet. He also made the Boy Leaders in the ninth grade—the first frosh to make the club. Glendeen Markham, as usual, came through on the scholastic end. She achieved the second best average in the school, 95.2.

And so we finished our freshman year, a lot braver and a little wiser.

In the fall of '38, we ascended those same steps, not a group of timid freshman, but a mob of pushing, shoving, self-confident sophomores. And now more than ever, we were a part of the school.

Bill Rutledge and Stan Foultz hit the height lines by getting "mugged" for the Review, the first of our class. Along the sports line, big little Joe Malanowski scored. He took the Ohio State wrestling crown in the 105 pound division. Ethel Fields led the girls' sports field with her bowling average of 117. Tony Coljohn was the first "soph" to make the pigskin varsity. Steve Dziama, Dan Kemeny, Dick McGinty, Jack Hughes, and Ed Bardis carried the ball for the Reserves, hoping—hoping.

Doris Holloway took honors as a "one and only"—Rhodes first harpist.

And then, one day, the Delta Hi-Y came forth, bringing with it an era of memorable and "not so good" events.

By far the outstanding feature of our 10A class was its organization. President Bob Weekly vowed to do things for the class; he did—look at us today. The social event of the season was the class picnic at Snow Road Metropolitan Park. In the June of '39, we left Rhodes hoping that in the fall we would be able to set new records and win new honors.

At the threshold of our junior year, we walked up those same steps, knowing that the coming two years meant the most in our high school lives.

And honors we did reap in our third year. Bob Weekley continuing his role as class president, attempted to guide us through the 11B.

Along the literary line, Bill Grady won five dollars and honors for his safety essay. (Thanks to someone.) In the dramatic field six of our class scored in the spring play, Not So Long Ago. The Barrymores were: June Felber, Dorothy Brandt, Bill Rutledge, Virginia Schieve, Ruth Summerfeld, and Dorothy Demchik.

Marilyn Ebner took a superior rating in the Cleveland vocal solo contest. Harold Brandes and Ruth Klomfus upheld tradition with excellent ratings. In the Greater Cleveland Instrumental Contest several of our class took top honors. Ethel Fields, Robert Rehburg, and Elaine Hendriech scored firsts and upheld Rhodes' honor at the national contest in Battle Creek.

A most memorable event was the Boy (chorus girl) Leaders doing their stuff at the Vodvil show. Such legs!

The first big break in our junior year was Bill Rutledge's achievement in gaining the office of president of the Student Council. Blame the unforgettable campaign on the Deltas.

Dorothy Brandt topped the school by being installed as track queen for the West Side District Meet.

In closing the junior year, we donate a great deal of credit to Clyde Tussey for his handling of the 11A class.

And then, seniors at last. The big fish in a little pond. As seniors, our first job was to elect a 12B class president—namely Stan Blackburn. Bossing the Rhodes Review, Jane Selzer was cracking the heads of her staff together in order to make numerous deadlines.

Football season brought with it a host of honors for the class. Eline Smirt was chosen 12B pigskin queen. Bardis, Kemediy, McGinty, Georgione, Coljohn, and "the Russian" were the mainstays of the squad, with of course Hughes' help.

We entered the 12A, most of us wondering whether the squabbles over class president, yearbooks, formals, informals, picnics, and caps and gowns would be settled by commencement.

Demon Dinda not only took top scores in the Ohio State Scholarship exam, but also made the honor roll—the only boy in the school. Exercising their tonsils with eloquence, Clyde Tussey and Dorothy Demchik spoke for the Community Fund. Down on the Arena ice, for the first time, the blue and white was displayed on Rhodes hockey uniforms. Skating for the new team were Tom Eaton, Al Bruggemeier, Don Lingruen, and captain Dan Kemeny. Late in the year in the same building Dan Kemeny took first place for low hurdles in the annual indoor track meet.

For once, the Deltas showed that they could be serious, when they held the formal induction for their new junior chapter in the auditorium.

Brown as a berry, Lew Potts returned to good old Rhodes, after spending two months among the pampas down South American way.

As the rehearsals for the spring play, June Mad, which ended in a smash hit, rolled around we found Eugene Meier and Dorothy Brandt learning lines for the lead. Actor and S. C. president, Bill Rutledge, counted tax stamps between scenes.

After the excitement of the close senior class election, in which Stanley Blackburn edged out Steve Dziama, minds seemed to wonder. Some concentrated on scholarships, others on jobs in the Army. Many played on the sweet thoughts of formals, commencement, and graduation. But all of us felt a big lump in our throats at the thought of leaving "DEAR OLD RHODES HIGH."

LAST WILL AND TESTAMENT

We, the Senior June Class in the year of our Lord one thousand nine hundred and forty-one, do hereby establish, expound, propound, and set forth this our last will and testament for the benefit of all those who are fed up on classical literature.

First of all, we wish to bestow upon our duly grateful successors all such diabolical talents which we may divest ourselves of in the act of graduation and which have so delighted the faculty during our ecstatic sojourn at Rhodes. In this expansive feeling of generosity we enumerate the following specific hereditaments with which we endow those who will carry on in our absence.

Suction I

Cup I We leave the splendid records of our first bowling and ice-hockey teams to all those who would sustain Rhodes prowess in these as well as other athletic fields.

Cup II We leave the first All-Sports Boosters Club to the wiles of the dynamic Adolph Schanzenbach. We are firm in the belief that the fall of 1941 will see more than one thousand in the ranks.

Cup III We leave the captainships of the football, basketball, and track teams, which were formerly held by Steve Dziama, to any other three fellows who are capable of assuming them.

Suction II

Cup I To all future patrons of the noon movies we leave Mr. Howard's trailer fare box. Ah! Remember the good old days when we had the privilege of putting our two pennies in the doorman's hand!

Cup II To Mr. Henderson we leave the peace and quiet of his chemistry lab minus the evil inventions and vile concoctions of his lab assistants, Bill Plumer, Bob Pasista, and Clem Loshing of foaming mouth fame.

Cup III To all the would-be journalists who will reside at 218 Rhodes Hall from June '41 on, we leave all the inefficiency and inexpertness promoted by Selzer, Yonkers, Walker, Felber, and Lieberman during their hectic careers at the various heads of that publication.

Suction III

Cup I Clyde Tussey leaves all his lines, dramatic and otherwise, as left to him by Phil Finn, January '41, to Bob Duffy, who is already somewhat of a flash on the gash.

Cup II Harold Brandes is going to leave Rachel Zwilling—but not to anybody.

Cup III Ethel Fields and Robert Rehburg leave their drumming ability (?) to any other subnormal persons who drum on the table with spoons between the soup and steak courses.

And in parting we wish to pay a renewed tribute of respect and admiration to Miss Hier, Mr. Mathews, Mr. Bryan, Mr. Ferguson, and Mr. Harsh in appreciation of their guidance and counsel during our stay at Rhodes. Also, to the rest of the faculty we wish to express our gratitude for their kind indulgence of our spirit of youth while endeavoring to unravel before our eyes the misty threads of knowledge. Now we come to say goodbye to the halls and corridors which have echoed so long with our shouts and laughter and ambitious philosophies.

As these last fading echoes die to whispers, we stand on the threshold of another world with new opportunities and greater conquests and we say farewell to a life we have lived and loved and shall revere in our memories in days to come.

FACULTY



First row, left to right—Miss N. Thompson, Miss Lanese, Miss Davis, Miss Kenyon, Miss Couden, Miss Hassler, Miss Bell, Mrs. Minch, Miss Blankor. Second row—Mr. Howard, Mr. Seedhouse, Mr. Tanko, Mr. Vannorsdall, Mr. Hartzell, Miss Thompson, Mr. Harsh, Miss Keller, Mr. Henderson, Mr. Imhoff, Mr. Van Kennel. Third row—Mr. Folkman, Mr. Stevens, Mr. Moran, Miss Jenny, Miss Manning, Miss Ballash, Miss Oetjen, Mrs. Bush, Miss L. Thompson, Mr. Bereit, Mr. Booth. Fourth row—Mr. Jackson, Miss Birney, Miss Barhyte, Miss Hier, Miss Palmer, Mr. Ferguson, Mr. Mathews. Fifth row—Mr. Bryan, Mr. Younger, Mr. Hicks, Mr. Sifritt, Mr. Caulkins, Miss Konker, Mr. Hoffman, Miss Thieme, Miss Mallard, Miss Cherrington, Mr. Holden, Miss Simpson, Mr. Forster, Miss Sorge, Mr. Bright, Miss Stebbins, Mr. Baker, Mr. Jacobs.

The faculty of James Ford Rhodes has in its hands a major share of the task of shaping the destinies of the many young people who come under their supervision. The caliber of their conscientious work is reflected in the sterling accomplishments of the alumni, it is reflected also in the harmony and happiness within the school. Therefore we are very glad indeed to realize that this group which plays such an important part in influencing our lives is not only a group of teachers, but also is a group of friends; and in this relationship, we, the graduating class shall ever hold the remembrance of their kindness and graciousness to us.

NATIONAL HONOR SOCIETY



1st row front (left to right)—Elaine Hendriech, Glenden Markham, Loretta Pretzer, Lois Link, Dorothy Brandt, Margaret Jones, Harriet Coates, Bette Luzius, Dolores Boettner. 2nd row—Fern Feltes, Laverne Prah, Virginia Herrmann, Betty James, Virginia Schieve, Doris Humpal, Doris Lister, Dorothy Pariza. 3rd row—Jean Sauer, June Felber, Martha Zaykowski, Doris Gatz, Helen Kowalski, Hildigard Boehm, Lois Reiman, Jeanne Mueller, Shirley Rockwell. 4th row—Miss Bell, Corinne Shaw, Dagmar Lewis, Dorothy Maline, Myrtle Woehrman, Betty Jane Walzak, Dorothy Demchik, Robert Weekly. 5th row—Robert Rehburg, Clem Loshing, Joe Matye, Bill Rutledge, Stanford Fultz, Charles Smith, Clyde Tussey. 6th row—Paul Katzen, Lew Potts, Gorden Hower, Russell Svec, Quentin McKenna, Teddy Borzak.

Membership in the National Honor Society is the highest honor that can be conferred upon a high school student. Those pupils selected to receive this honor are judged on the basis of scholarship, leadership, character, and service; and only those who can qualify in all four of these necessary essentials are admitted to membership. To be a member of the National Honor Society is a coveted award of recognition that is worth working for, and to be worthy of membership in such a highly esteemed organization should be the goal of every boy and girl beginning his or her high school career.

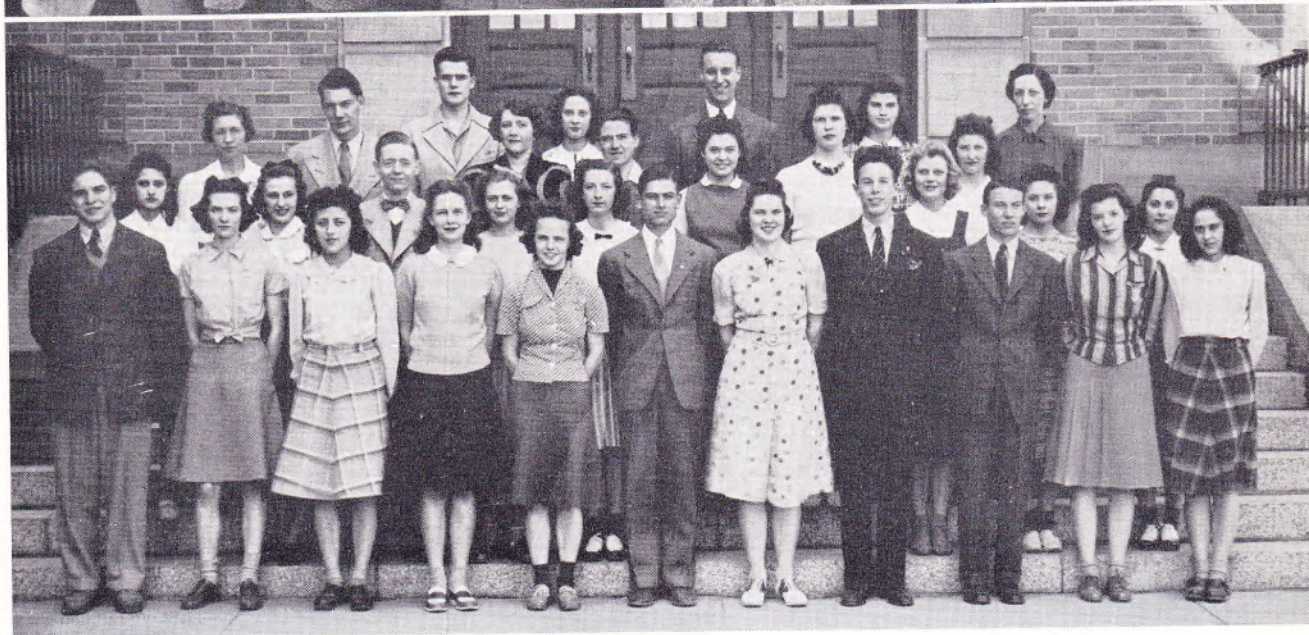
GIRLS LEADERS



BOYS LEADERS

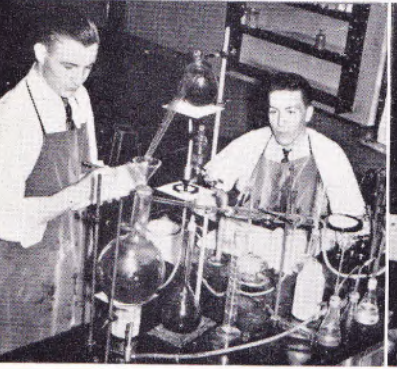
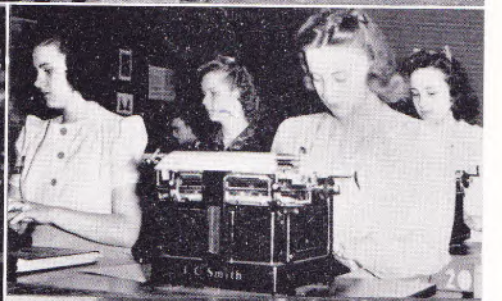
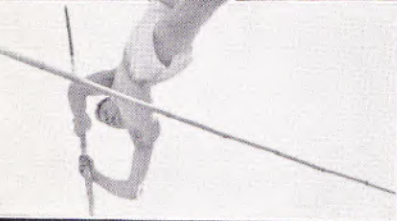
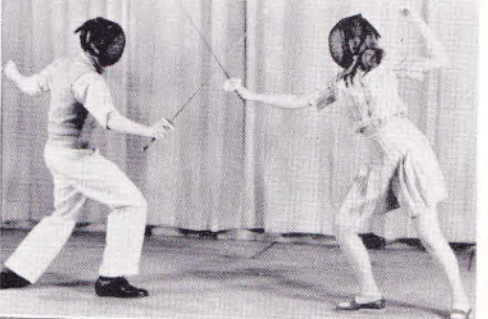
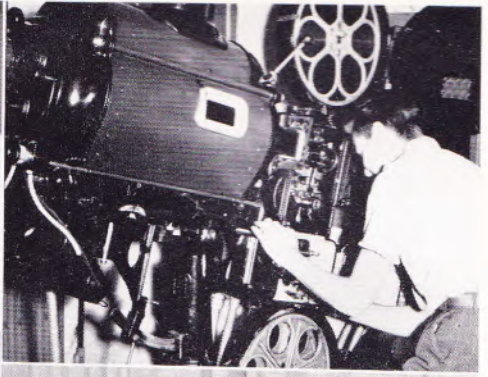
JAMES FORD RHODES
HIGH SCHOOL LIBRARY

SIGMA DELTA PHI HI' Y



LANGUAGE CLUBS

Senior Members, Officers and Sponsors



You go no more on your exultant feet
Up paths that only mist and morning knew,
But you were something more than young and sweet
And fair,—and the long year remembers you.

From Renascence, by Edna St. Vincent Millay

To the memory of Elsie Korylak; loyal classmate, admirable student, and gracious friend. Her life was a joyous, vital experience, filled with many interests, her friends, her school and her church — bright with many delights. At this momentous period in our lives, we only wish that Elsie could be with us to enjoy the romance of graduation.