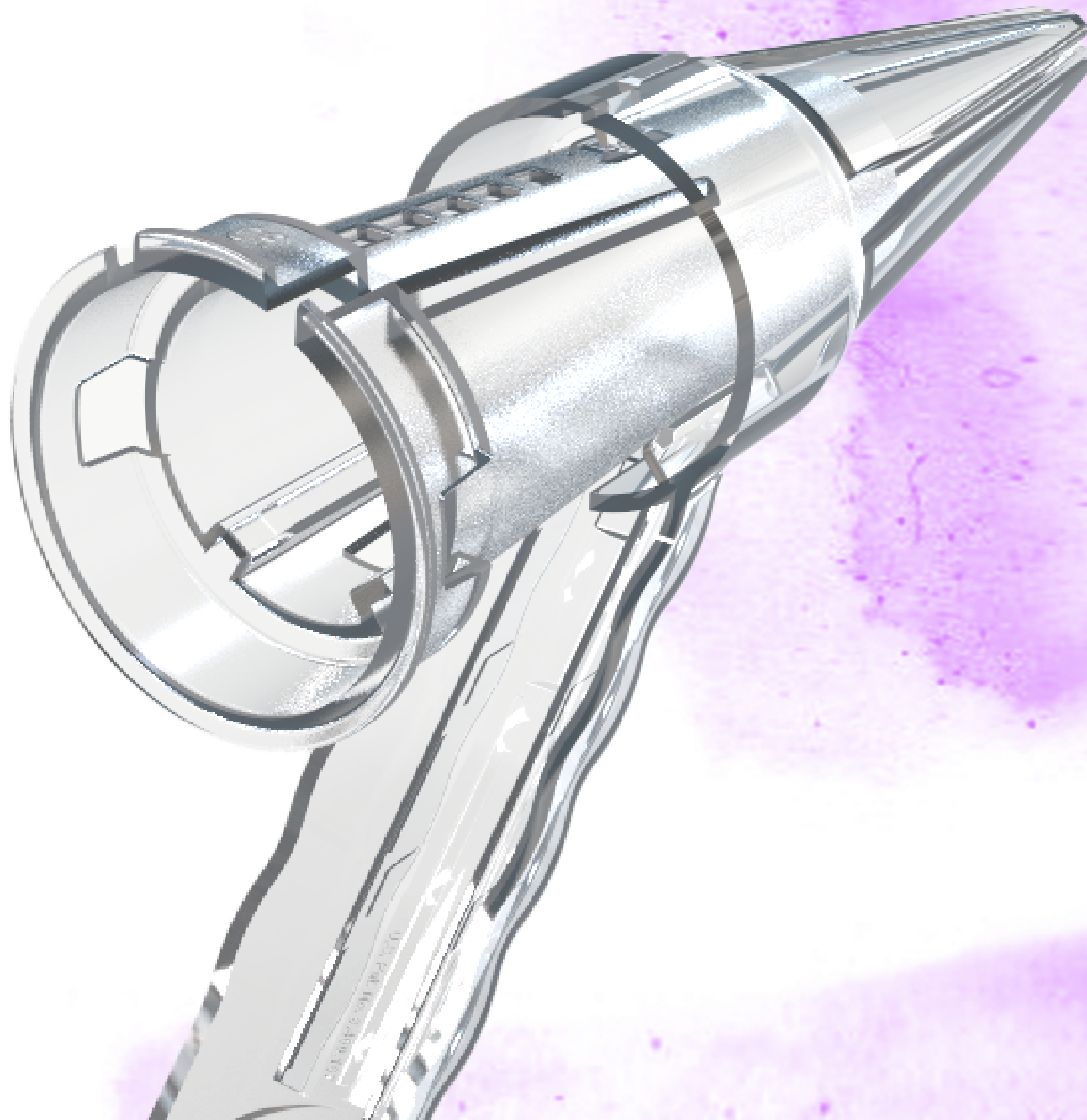


# The Bouquet Speculum

discover the product





# About The Product

The Bouquet Speculum is a disposable 5-petaled vaginal speculum that opens in a radical fashion, preventing vaginal wall collapse, enhances visibility of the cervix whilst providing a more comfortable exam for the patient



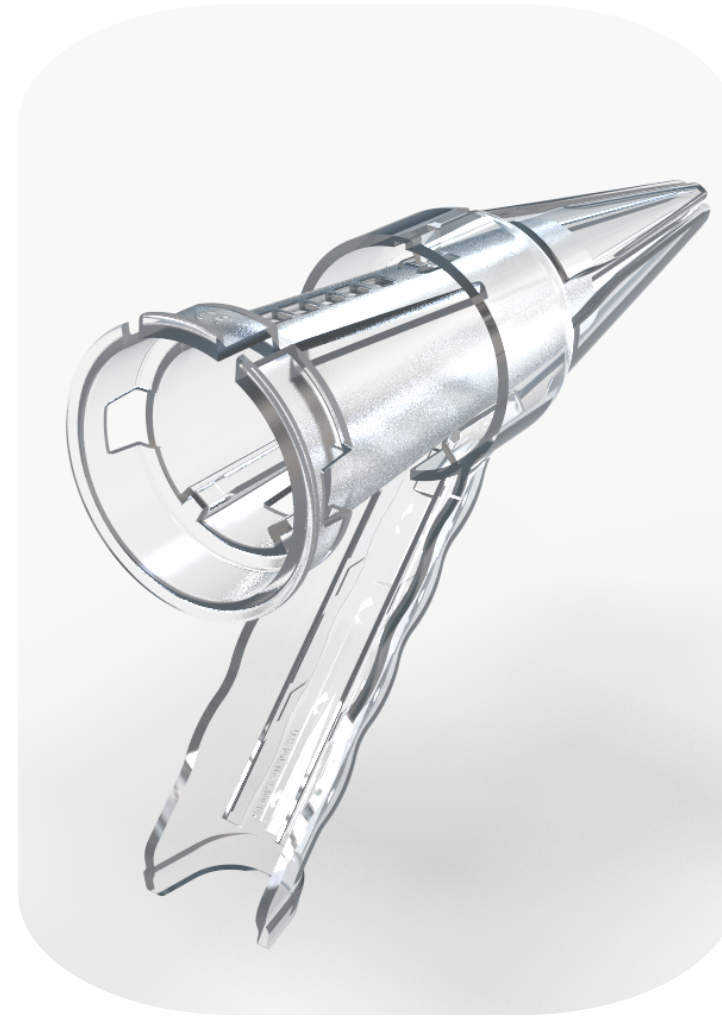
# Advantages



## Improved view of the cervix in all cases

The challenge with the existing 2-bladed speculum is that the lateral vaginal walls can collapse, obscuring the view of the cervix, leading to inconsistent sampling.

The Bouquet speculum opens in a radial fashion, providing an unencumbered view of the cervix



## Ease of use

The Bouquet Speculum has been ergonomically designed to aid the provider in visualizing the cervix

The easy opening mechanism provides one handed use, without the need for a specialist table nor repeated adjustments or re-insertions.

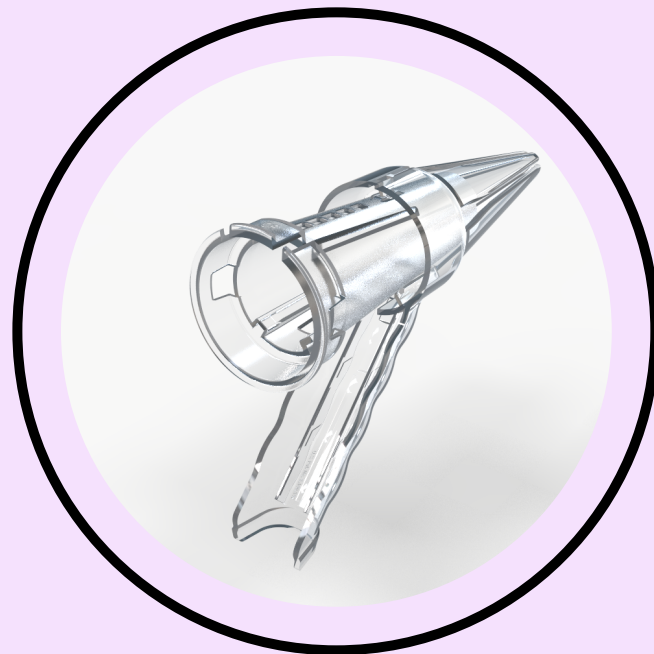


## Less discomfort for the patient

The radial opening of the Bouquet Speculum allows for a radial and even distribution of internal forces resulting in increased patient comfort.

# Comparision

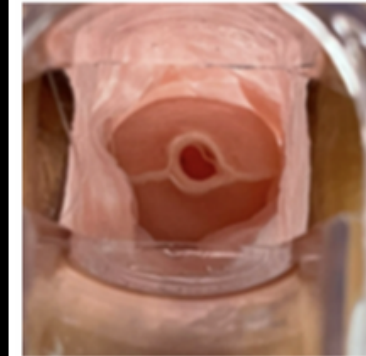
Statistical analysis shows that the mean PVA (Percent visual area) for the Bouquet Speculum was statistically higher than the 2-bladed speculum across all internal pressure ranges



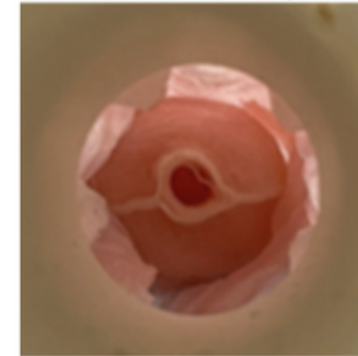
5-petaled design allows for easy opening and improved visualization of the cervix

0.1 cm H<sub>2</sub>O (10 Pa)

Traditional:

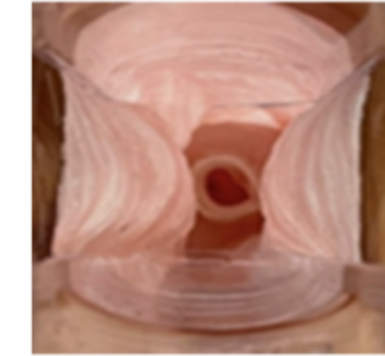


Bouquet:

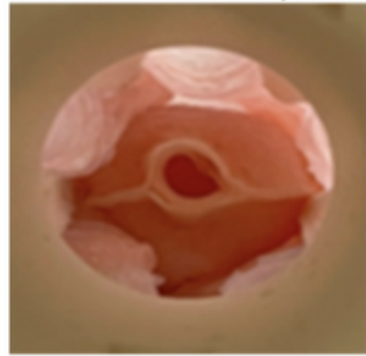


4 cm H<sub>2</sub>O (392 Pa)

Traditional:



Bouquet:

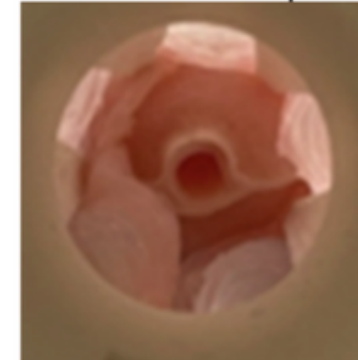


8 cm H<sub>2</sub>O (785 Pa)

Traditional:



Bouquet:

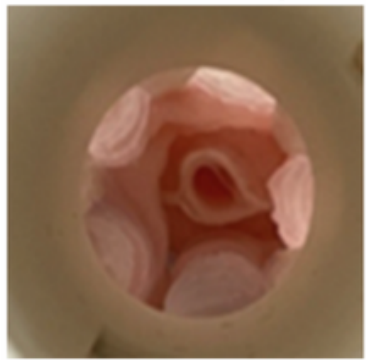


12 cm H<sub>2</sub>O (1177 Pa)

Traditional:

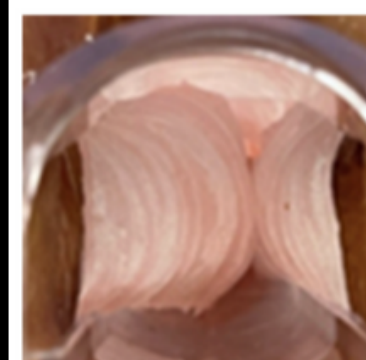


Bouquet:



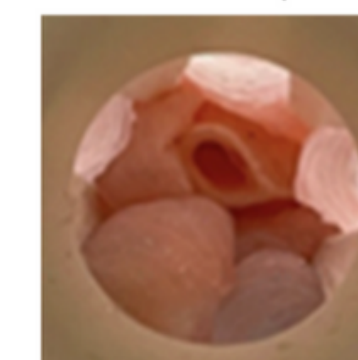
16 cm H<sub>2</sub>O (1569 Pa)

Traditional:



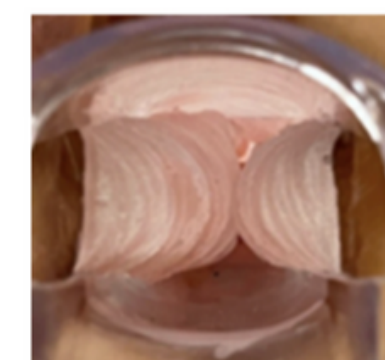
\*Full Obstruction

Bouquet:



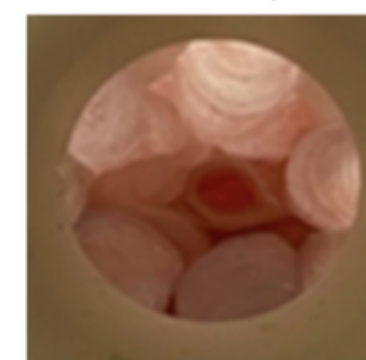
18 cm H<sub>2</sub>O (1765 Pa)

Traditional:



\*Full Obstruction

Bouquet:



# Features

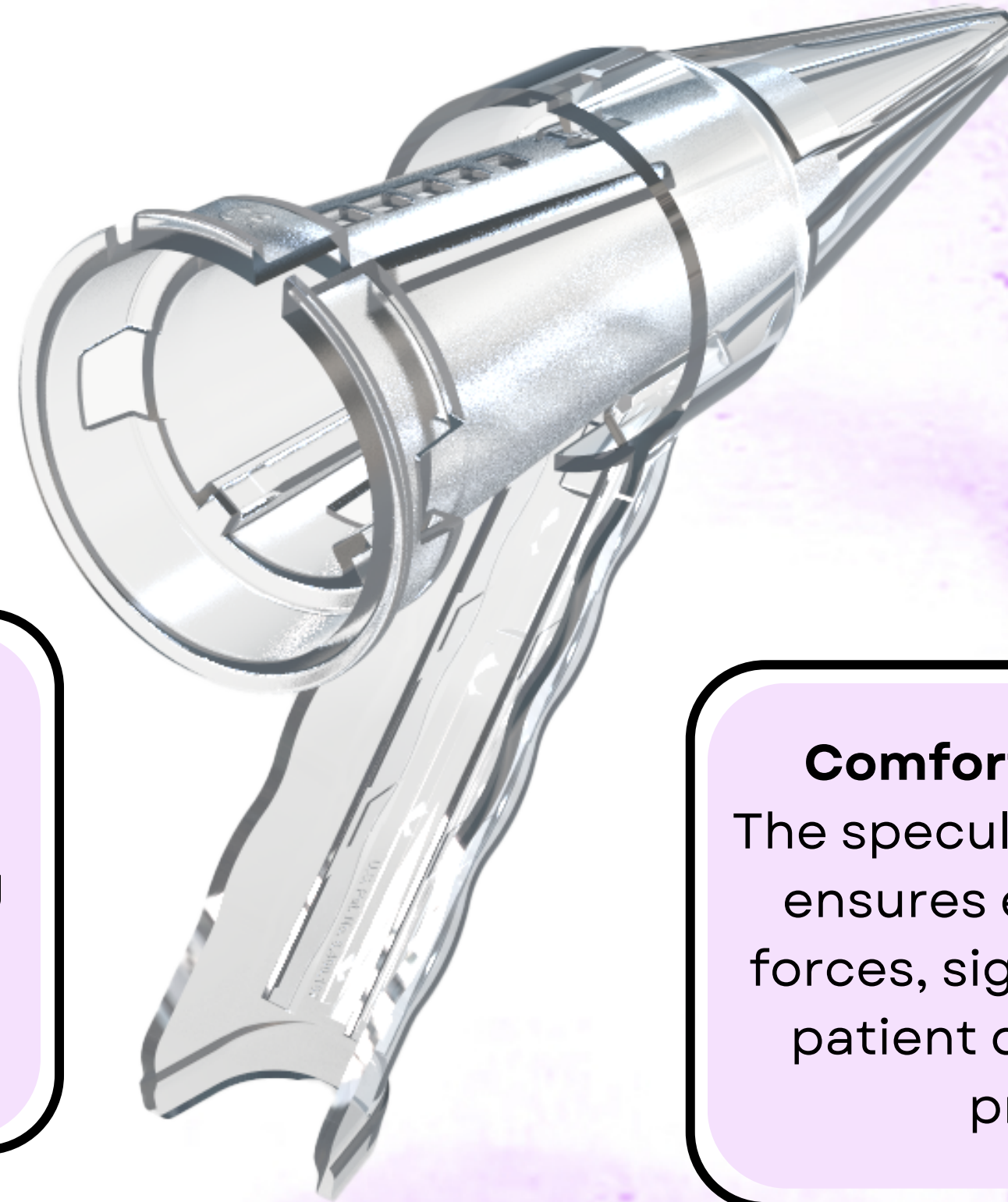
---

## **Innovative Radial Speculum**

Featuring a five-petaled design that gracefully opens in a radial fashion, providing a revolutionary approach to cervical procedures.

## **Integrated Penlight Holder**

Designed with a dedicated space for a penlight, enabling enhanced visibility during examinations.



## **Enhanced Safety**

Thoughtfully designed gaps between the petals minimise the risk of pinching, prioritising patient safety.

## **Comfort-Centric Design**

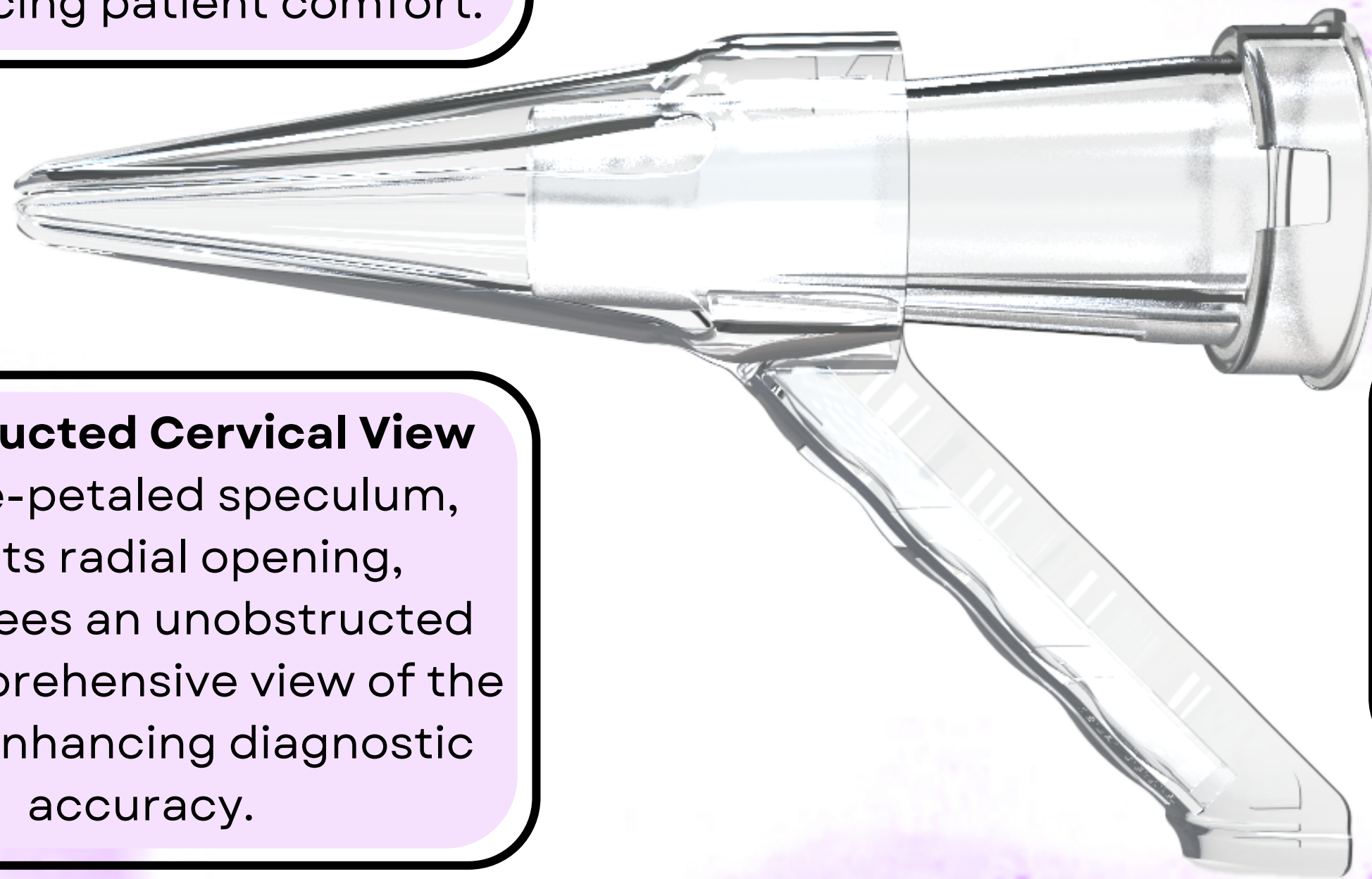
The speculum's radial opening ensures evenly distributed forces, significantly reducing patient discomfort during procedures.

# Features

---

## **Smooth and Precise Insertion**

Its rounded edges and slim insertion point facilitate gentle and precise placement, enhancing patient comfort.



## **Unobstructed Cervical View**

The five-petaled speculum, with its radial opening, guarantees an unobstructed and comprehensive view of the cervix, enhancing diagnostic accuracy.

## **Universal Adjustable Fit**

The dilator offers a versatile and customisable fit, ensuring comfort and ease of use for all patients.

## **Versatile Usage**

The uniquely angled handle allows for flexible usage on any surface, ensuring convenience and adaptability.

# Components

---

## Speculum Dilator



- Used for insertion on the speculum component to induce opening of blades from the forward movement.
- Key Features include:
  - Locking mechanism
  - Designated holes for additional mating with the speculum component.
  - Suitable for forward and backward movement with just one hand.

## Handle with Speculum

### Petals



- Used to dilate the vagina.
- Key Features include:
  - Consists of 5 petals.
  - Insertion end of diameter = 12mm.
  - Has a designated space for a pen light
- Equally usable and comfortable to right-handed and left-handed users.

Additional component LED penlight



# Testimonial

## Physician Impact Statements...

---

*This model provides an answer to the common problem of visualization of the cervix as well as being inexpensive, completely mobile and providing good light. It looks like an easy winner in my office.*

**Dr. Jill Pitcher, President of the Colorado Society of Osteopathic Medicine**

*Unlike ordinary two bladed speculum that you keep adjusting all around to get a cervical image, The Bouquet Speculum makes it easy for us. Just a one single insertion and a dilation of the vaginal walls giving the best patient comfort without tissue biting and multiple adjustments. We highly recommend it to anyone.*

**Daniel Kimani, MD, Clinical Colposcopist. Global Cancer Care and Research Institute-Kenya**

