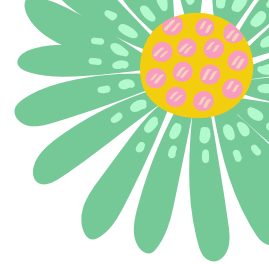


Welcome to Earthshine!



We look forward to partnering with your family to begin a sure to be amazing experience at Earthshine Early Childhood Enrichment Center! We are a Morning Preschool center that uses both Montessori and Reggio Emilia philosophy in our engaging classroom spaces.

In this welcome letter, you will find more information about different expectations, what your child needs daily, and more information that will better prepare you for the first day. We look forward to providing you and your child an excellent learning experience and welcome you to our Earthshine Family!

Hours:

We are a part time care center. Children are not permitted to stay longer than 4 hours a day. We are open from the hours of 8:15am- 12:30pm. All children must be picked up within 4 hours of their arrival, and picked up by 12:30pm.

Arrival and Cutoff Time

Drop begins at 8:15
for all classrooms.
All children must be
arrive before 9:15
everyday, unless
previously arranged
with staff.

Items Needed Daily

- Water bottle or cup
- Snack & Lunch* see Food*
- Extra Clothes (2 sets of full outfits, including a shirt, pants/ shorts, socks, and underwear, if needed)
- Diapers and Wipes (teachers will inform you if your child is running low on these items)

Food

Parents must provide all food for their child daily. We have a morning snack and lunch time everyday.

We ask you to bring in nutritious and filling foods, and avoid processed food with lots of sugars and fats. We know that food is fuel and we want to set the children up for a great day by fueling their bodies with healthy foods.

Please label all of your children's snack items and water bottles with their name and date on it everyday.

Toys:

No toys from
home are
permitted. Please
do not bring any
toys from home
into the building.

Outside Play:

We spend a lot of time outside, so please dress children appropriately for the weather. This includes applying sunscreen and or bug spray in the warmer months, as well as providing a coat during the cooler months.

