



Pottery & Porcelain

CATALOGUE 2023/24



Our personalized dinnerware is here to make the boring beautiful, by sneaking art into everyday routines. All our ceramics are handmade in effortless organic shapes to add a touch of uniqueness and personality to every home and every table.

“Every dish you serve can taste better, as the process of eating starts with observation.”

Any palette, any form and any personal requests are welcome, as we are passionate to plate pleasure and aesthetics to any dining occasion. From the classic to the unexpected, you can choose from our versatile collections or ask for a made-to-order special set that suits your style and taste.

- | Personalized dinnerware
- | Exclusive collections
- | Entirely handmade process
- | Organic shapes
- | Bold colors
- | Food safe materials

COLLECTIONS

Our diverse collections possess such distinctiveness that one might question if they stem from the same creative mind. Embrace a splendid array of color combinations, sizes, and shapes perfectly tailored

to harmonize with your home, restaurant, or culinary creations. For our esteemed partners, whether they own restaurants, shops, or galleries, we curate designs that hit the bullseye.



At the heart of our artistic endeavors stands Maria Baleva, a experienced architect with a wealth of expertise in product design. Her visionary touch infuses each creation with unparalleled charm and functionality. Reach out with your inquiry, and we guarantee you'll be utterly convinced by the unparalleled artistry we bring to life.

[VIEW ALL COLLECTIONS](#)

■
"The everyday extraordinary"



ICONIC AND CHROMATIC



material:
white porcelain

colors:
any possible color & hue



Color collections

Color collections are our iconic and best-selling ones. They combines the elegance of the white porcelain with the spontaneity of the organic forms and the delight of combining colors.

The playfulness of colors harmoniously dances with the elegant white porcelain canvas, creating a symphony

of visual delight. Whether it's a subtle pastel palette or a bold and vibrant array of hues, the colors in these collections add depth and dimension, inviting individuals to express their personality and style through the art of table setting. Each subcollection exudes the brand's unique spirit and distinct character.



material:
white porcelain

basic colors:
sage
ivory
ivory wuth blue dots

special colors:
orange rose
blue sunset

intense colors:
ultramarine
indian yellow
green

SUBCOLLECTION

Fall/Winter



**WARM AND
FRIENDLY**

[GO TO COLLECTION](#)



What are our color topics? We are definitely inspired by the slanting sun, the autumn fruits and the the feeling of returning home after a long absence. We worked a lot to create our own glazes that make a great color combination and some of them include more than one color at oneself.



GO TO COLLECTION

SUBCOLLECTION

Bliss



Bliss
is inspired by nature and the eternal beauty. The idea behind each piece is to embody the simple tranquility of nature in order to bring her healing power closer to us even when we are behind the closed doors of our everyday lives.

material:
white porcelain

basic colors:
forest green
sage green
ivory

accent colors:
pink
purple
yellow
sky blue
dark blue
orange

**UNIQUE PIECES
INSPIRED BY NATURE**



Project
BLISS - 2023

Client
Liberty London



there is a curse of blessings in your mind
just praise something different each day
this secret keeps the way ahead
it simply teaches you how to find
next steps you have to take

Zornitsa Genova
[Poetry]

SUBCOLLECTION

Ultramarine



BLUE AND INDIAN YELLOW

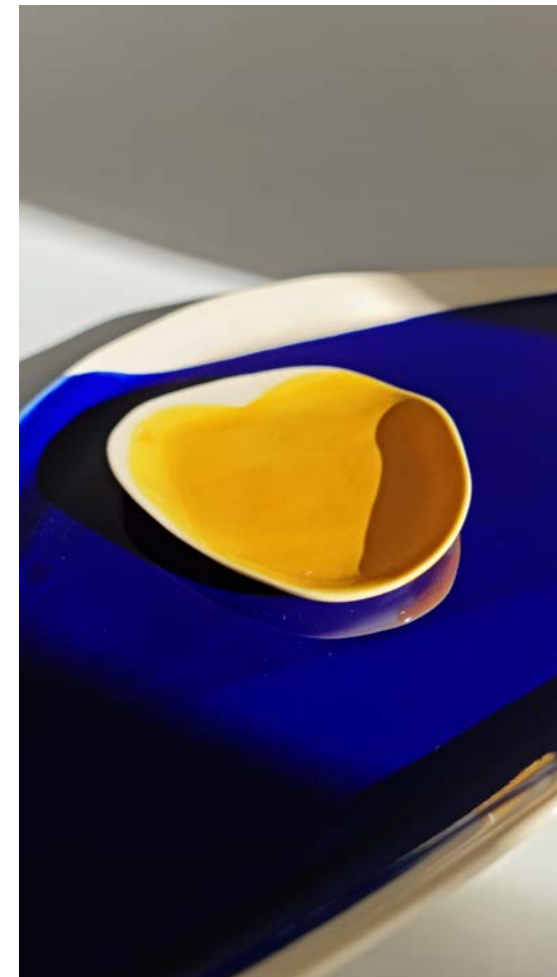
material:
white porcelain

basic colors:
transparent

accent colors:
ultramarine
indian yellow
light blue
light grey

■
ULTRAMARINE is a small collection made of white porcelain, painted with blue and Indian yellow glazes. The combination is really magic and the free shapes gives this crazy feeling of surreal beauty, something that could not be defined.

[GO TO COLLECTION](#)







Chocolate

material:

natural brown clay

basic colors:

chocolate

accent colors:

melted chocolate

white

graphite grey

mint

For the sweetest moments

All pieces are made of dark clay and are glazed with shiny transparent accents. The technique is entirely handmade and mixed between pinching, slab and kurinuki.

[GO TO COLLECTION](#)





material:
white porcelain

basic colors:
aubergine
forest green
sage green
milky pink

Aubergine

Aubergine is a remarkable collection of textured pieces in enchanting array of colors, each hue carefully chosen to evoke a sense of wonder and elegance. These pieces effortlessly bring the outdoors inside, creating a harmonious dining experience.

[GO TO COLLECTION](#)





Porcelain imprinted with gold

GISELLE is collection of limited edition bright ceramic pieces made from fine porcelain imprinted with luxurious golden textural design. These classy birds could bring vibrant artistry energy to any interior space.

material:

white porcelain

basic colors:

transparent glaze and golden details

[GO TO COLLECTION](#)

Giselle

—
a family of butterflies is fluttering inside
it's always summer even if it's cold
my heart's collected from some broken parts
its cracks are filled with gold
—

Zornitsa Genova
[Poetry]





Indigo

Cobalt blue

The cobalt oxide as a pigment on a white porcelain is maybe the most classical and timeless combination of ceramics. We use this combination and decorate our plates with homemade crayons. The lines are always freehand and gives the artistic value to the classic color combo.

material:
white porcelain

basic colors:
warm white

accent colors:
cobalt blue accents

GO TO COLLECTION



This extraordinary collection showcases an eclectic fusion of diverse textures and daring colors, designed to transport you to a realm of wonder and excitement.

Each piece is a work of art, meticulously crafted to push the boundaries of conventional design. The power of bold colors makes a statement and command attention.



BOLD COLORS AND TEXTURES

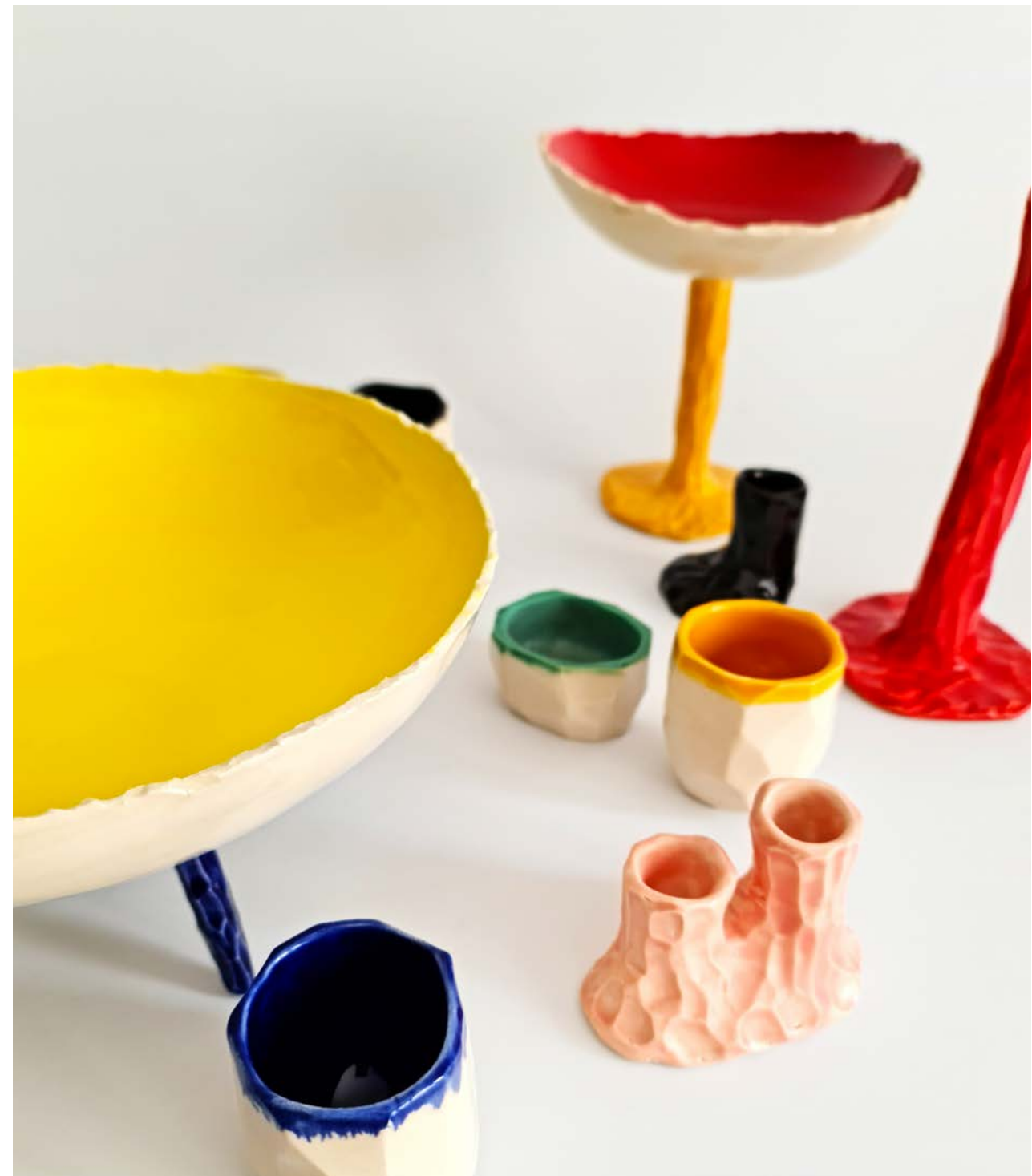


material:
white porcelain

basic colors:
white

accent colors:
scarlet red
royal blue
orange
lemon yellow
cadmium yellow
algae green
milky pink

Alienistic



Traditional Japanese Technique

The Japanese term refers to a hand forming process where solid blocks of clay are hollowed out to obtain interior space. This very old Japanese technique perfectly combines the search of beauty outside the usual form and the wisdom that echoes true the centuries.

Kurinuki



—
i'm sleeping on a pill of faith
not knowing the power of hope
to make desire so impossible to kill
it sneaks and makes you long
—

Zornitsa Genova
[Poetry]



GO TO COLLECTION

Grapes of love

This exquisite collection is a symphony of elegance, where the timeless allure of white porcelain harmoniously blends with the enchanting brilliance of spectacular bronze glazes.

material:
white porcelain

colors:
transparent and spectacular bronze glazes



PATTERNS THAT IMPRESS



Each piece tells a story of craftsmanship and creativity. The rich diversity of textures and shapes delights the senses, inviting your senses to explore the gentle undulations, intricate patterns, and velvety smoothness of the porcelain.



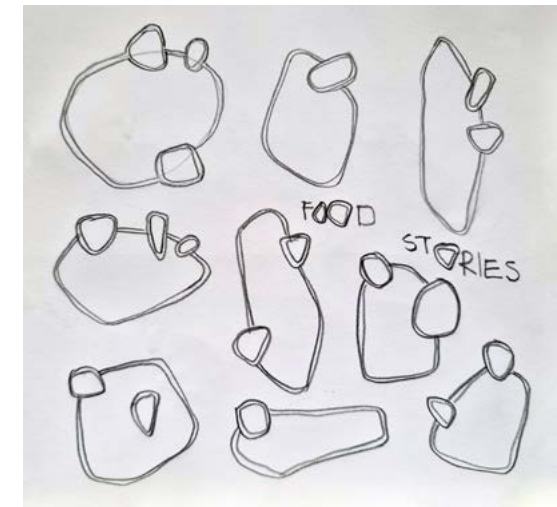
Food stories

material:
white porcelain

basic colors:
trasparent

accent colors:
use your imagination

CONNECTION WITH OUR FOOD AND THE WORLD



A collection that wants to emphasize on the connection with our food and the world. More and more people are living in an urban environment and are too busy to indulge their meal while spending some time with friends, telling stories. In our everyday life, we have breakfast on-the-go, eat lunch while swiping through Instagram and have dinner while watching TV shows. We should take the time to listen and share with the world, time to look at our food and appreciate it so we could please fully the senses – physically, mentally and spiritually. The collection is made of sculptural ceramic pieces made from fine white porcelain. They are perfect to decorate beautifully your table as a way to create enchanting atmosphere for your guest and yourself.

[GO TO COLLECTION](#)

■
**SOFT
AND
FEMININE**



The collection is inspired by the mystic power of nature that always wears the wisdom of spirit and harmonizes our instabilities. We used the natural colors and texture of clay for handbuilt objects in organic shapes so that they could give an instant intuitive association with the wild and untouched nature. It is named UNFINISHED SYMPATHY as in the modern times our connection with the living world is unfulfilled in the way it should be.

Unfinished sympathy

[GO TO COLLECTION](#)

At the heart of this collection lies the distinctive utilization of diverse clay types and the deliberate choice of transparent or absent glazes. These artistic decisions purposefully showcase the inherent beauty of the materials in all their unadorned splendor.

material:
white porcelain
brown clay

colors:
natural colors of the clay
transparent glazes



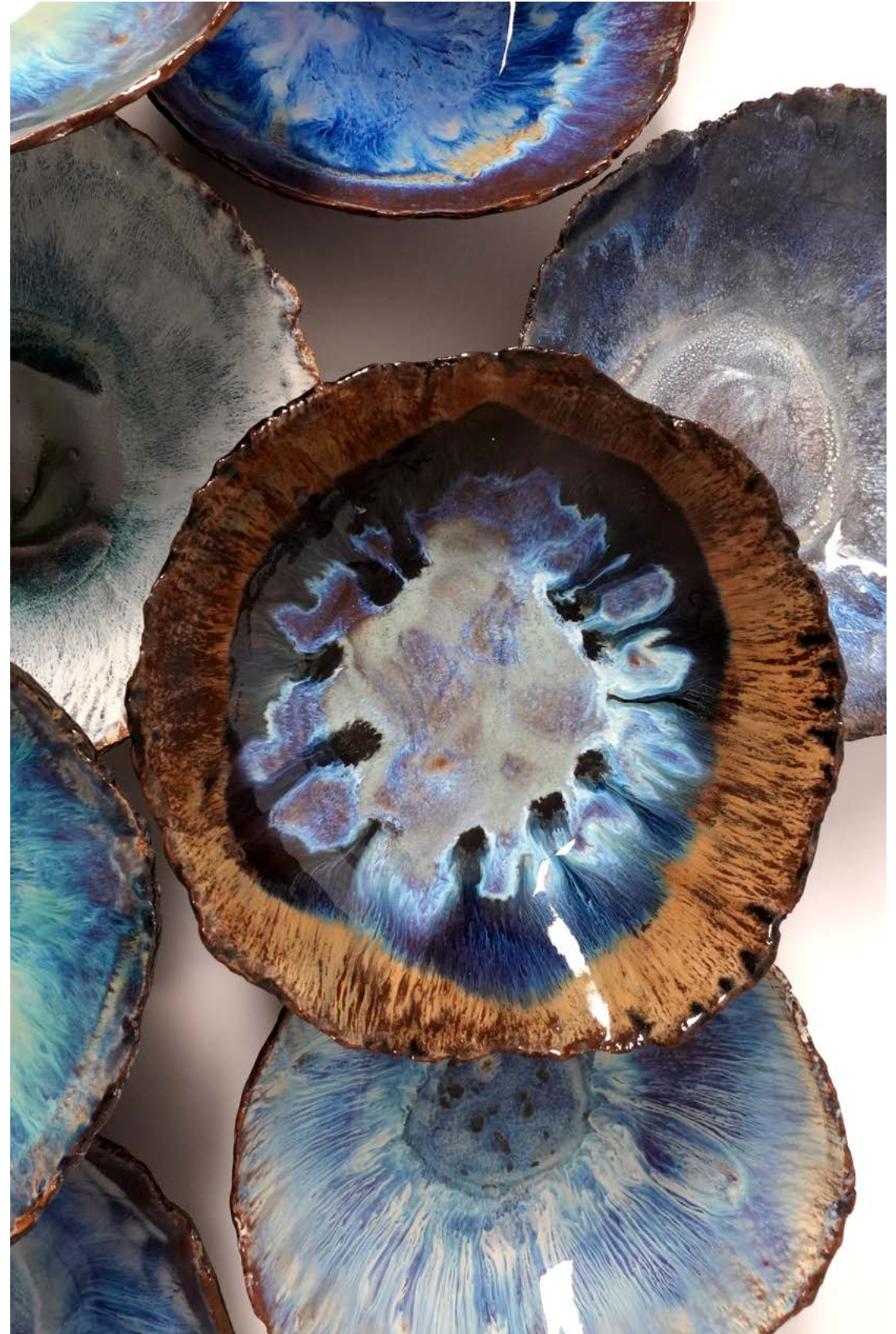
ICUSTOM DESIGN CERAMICS

UNIQUE PIECES DESIGNED ESPECIALLY FOR YOU

In our creative realm, collaborations are not just welcomed; they are cherished as another exquisite form of art. We extend an open invitation to join hands with us, and together, we can curate limited edition sets tailor-made for your restaurant or gallery. With our expertise and passion, we craft collections that seamlessly align with the unique concept of your place.

From the very onset of our collaboration, we forge a bond that nurtures creativity and innovation. We listen attentively to your vision, discussing every single detail, and collectively shaping the artistic journey ahead. And to ensure your utmost satisfaction, we meticulously create samples that leave no room for compromise.

Reach out to us, and let our collaborative endeavor culminate in a masterpiece that leaves both your clients and senses satisfied beyond measure.



A WORLD OF CULINARY HARMONY: TAILORED
TABLEWARE FOR YOUR UNIQUE RESTAURANT

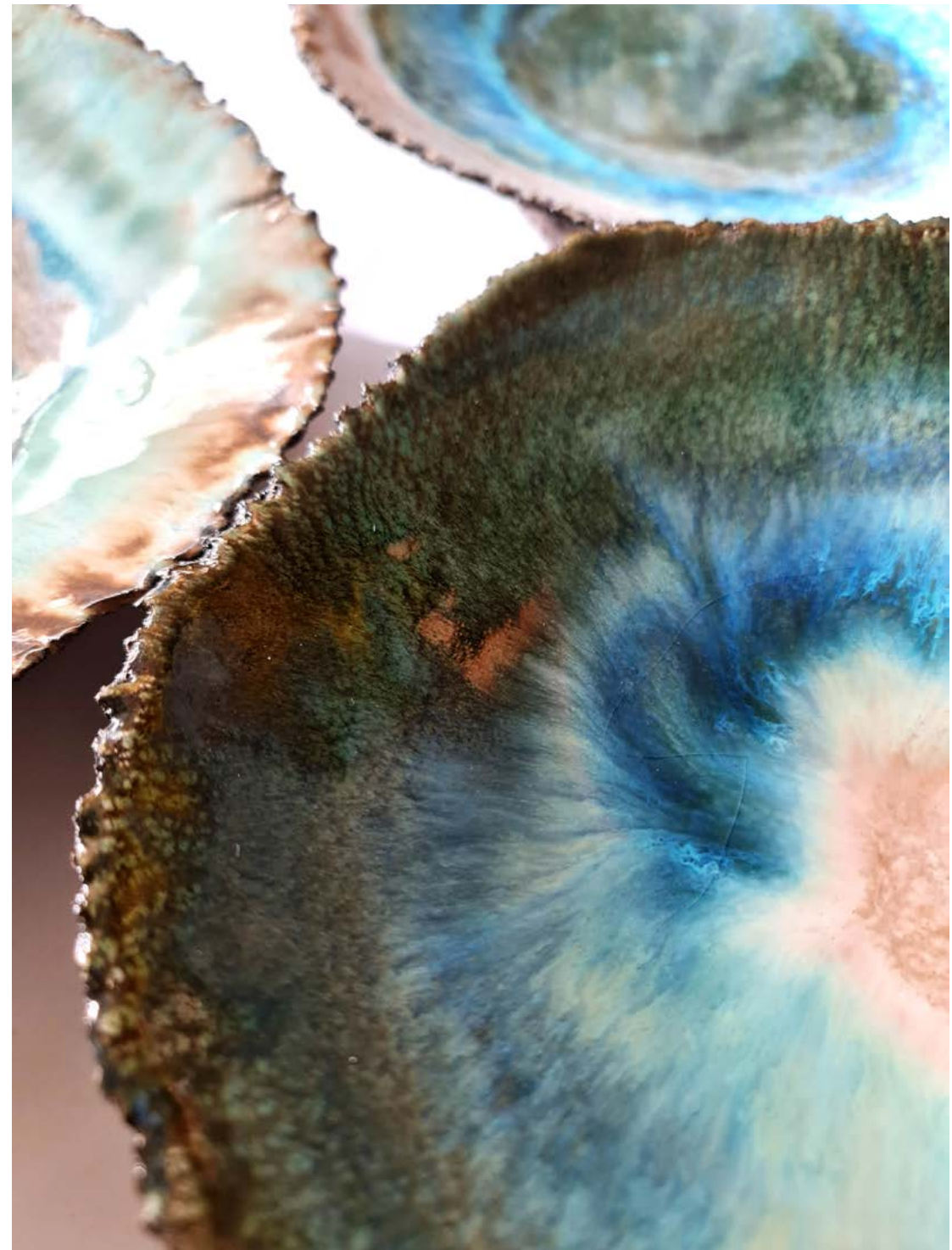
—
grounded by the vibe
that should make me fly
I just have used my body
to realize my mind

Zornitsa Genova
[Poetry]

**Table by Chef Bruno Verjus
in Paris, France**

2-star Michelin restaurant
No.10 World's best restaurant and
No.1 in France for 2023

Restaurants



[VIEW RESTAURANTS](#)



BOUTIQUE RESTAURANT IN BULGARIA

Restaurants



Our expertise lies in crafting bespoke tableware that perfectly complements the exquisite flavors of your culinary creations and harmonizes seamlessly with the distinctive concept of your establishment.

Whether you run a gourmet restaurant, a pizzeria, a diner bar, or a cozy cafe, we are dedicated to designing tableware that elevates the overall dining experience and adds unparalleled value to your space.

POTTERY & POETRY



1. PARADISO

Italian pizzeria in Sofia,
Bulgaria

2. A BISTROT

Paris, France

3. KYOTO

Bakery in Doha, Qatar

**THE RESTAURANT OF YOUR DREAMS
WITH THE TABLEWARE OF YOUR DREAMS**

Restaurants

Embrace the art of culinary harmony as we curate tableware that transforms your establishment into a cohesive and immersive experience.

Our creations are more than just plates and bowls; they are an extension of your culinary vision, accentuating the pleasures of taste with a visual and tactile symphony.





Galleries and retail

We take immense pride in collaborating with galleries, nurturing partnerships that breathe life into custom, tailor-made collections that resonate with their discerning clientele.

Flexibility is the core of our design process, as we adapt to the client's preferences, from choosing specific color palette to experimenting with different techniques.

This personalized touch results in a bespoke collection that complements the gallery's exhibitions and brings a new dimension to the space.

1. LIBERTY LONDON
Designer Department Store
Selling Luxury Brands

2-4. ABASK
A destination for curated, collectible and unique objects



**CUSTOM COLLECTION
PROPOSAL for
SELFRIDGES**
A chain of upscale department
stores in the United Kingdom
founded in 1908.





1-2. HIGO BLUE
Spain

3. THE CAT
Sinemoretz, Bugaria

4-6. ARTEMIS DECO
London



Galleries and retail



The slab technique starts with smooth slabs of clay that are then shaped by hand. Although it can be used to create many of the same shapes that are achievable on a wheel, slab building also allows to create unlimited sculpturing forms.





STORY OF SPACE

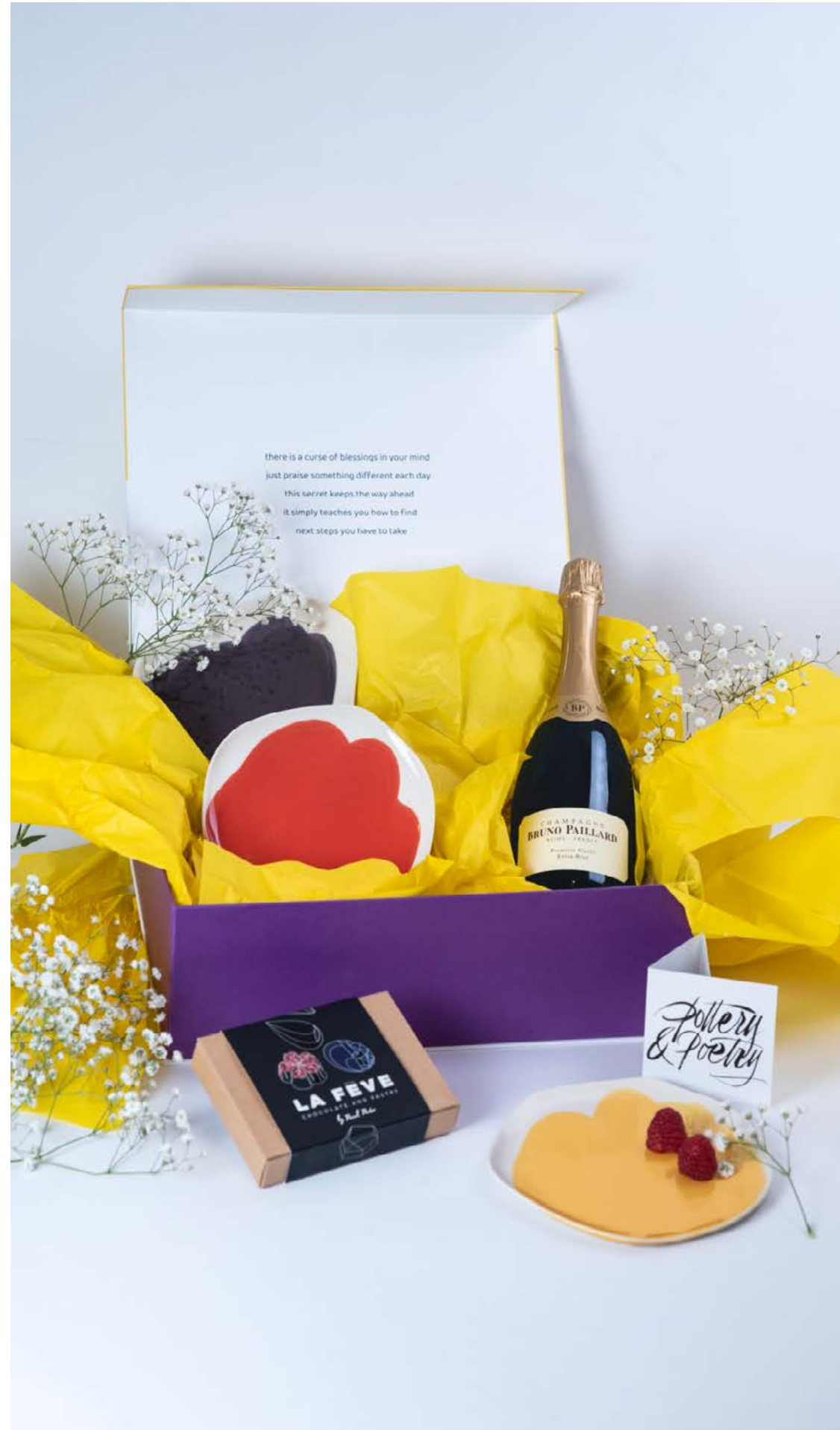
is an e-commerce based in Kuwait. They strive to search the world for distinct pieces that will transform your house into a home. Our collection is inspired from the desert sands, the wind and the unexpected shapes that can be observed all over the world.



Corporate gifts

We believe that corporate gifting should be a meaningful and impactful experience.

Our custom corporate gifts are more than just presents; they are powerful tools that strengthen relationships, enhance brand visibility, and leave a lasting impression on your clients and partners.



Understanding Your Brand:

We start by understanding your brand values, target audience, and gifting objectives. This knowledge forms the foundation of our design process, ensuring that your gifts resonate with the right message.

Collaborative De-sign:

Our designer and ceramists collaborates with you throughout the design journey. From color selection to packaging concepts, we value your input, making the process a seamless and enjoyable experience.



CORPORATE CLIENTS

- SETTLE
- SEEWINES
- YETTEL
- SMARKETING
- DREKKA
- MULLENLOWE
- TEPRO
- MAZZILO COSMETICS
- SOFIA LIVE FESTIVAL





Branding

Personalizing your products during manufacturing adds an authentic touch, showcasing that each item was made especially for you. Elevate your brand with our distinguished approach to personalization.



—
he splits the atoms in the air
transforming my wisdom in lust
I'll go to the hours of nowhere
as long as we never give up

Zornitsa Genova
[Poetry]
—

—
behind the eyes that taught us to be blind
we keep the walls that flesh cannot define
these walls are made from our fear
the way ahead is straight through it

Zornitsa Genova
[Poetry]

—

Packaging

Variant with Colored Sleeve



Variant with Stickers



Customized Hard Cardboard Boxes



While the shapes may be organic and inspired by nature's grace, we also recognize the importance of practicality in daily living. To strike a perfect balance between art and functionality, our collections feature sizes that are thoughtfully designed to offer versatility and ease of use.

The fixed sizes of our plates, bowls, and other items are carefully calibrated to ensure they fit seamlessly together, allowing for easy stacking and storage. Whether adorning your kitchen shelves or arranging a stunning table setting, this practical feature enhances the convenience of handling and maintaining our pieces.

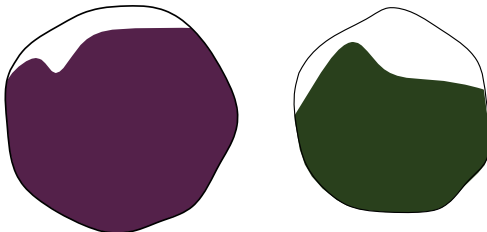


DIPPING BOWLS



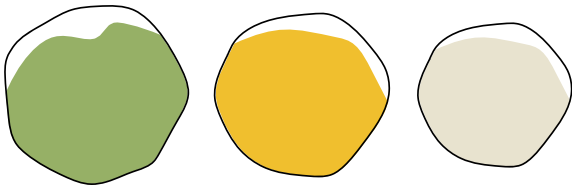
Shapes and sizes

LARGE SERVING PLATES



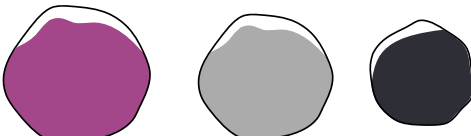
35 cm 31 cm

DINNER PLATES



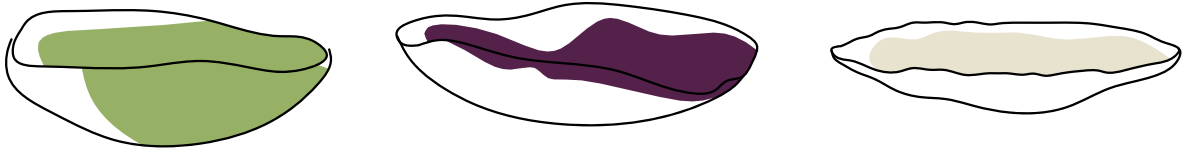
28 cm 26 cm 24 cm

SIDE PLATES



22 cm 19 cm 16 cm

SERVING BOWLS - UP TO 40 cm



MULTI-USE BOWLS



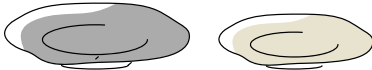
400 ml 300 ml

BREAKFAST / PASTA BOWLS



500 ml 350 ml

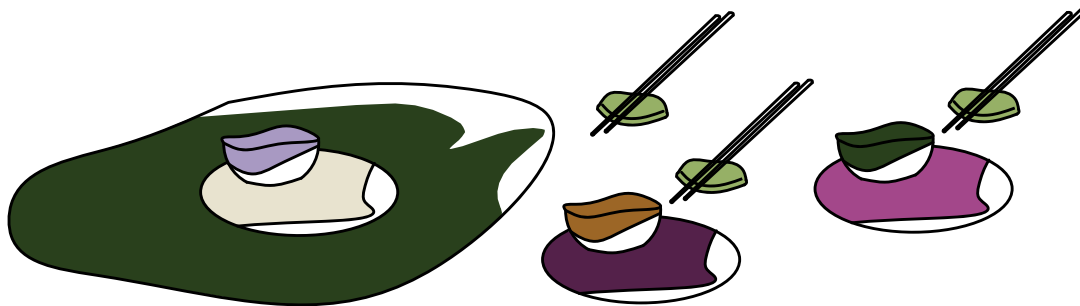
DEEP PASTA PLATES



500 ml 350 ml



SUSHI SETS - FOR 2 TO 10 PERSONS



At the heart of our collections lies a commitment to organic shapes that are thoughtfully and skillfully crafted by hand. Each piece is a testament to the artistry and dedication of our talented ceramicists, who meticulously shape and mold the clay, celebrating the beauty of imperfections and embracing the uniqueness of every creation.



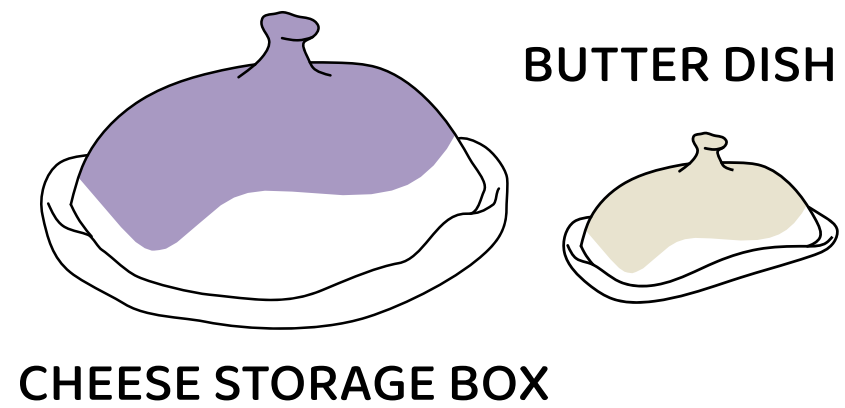
Shapes and sizes

TRAYS SETS - ANY SIZE UP TO 48 cm + MINI PLATES OR DIPPIG BOWS

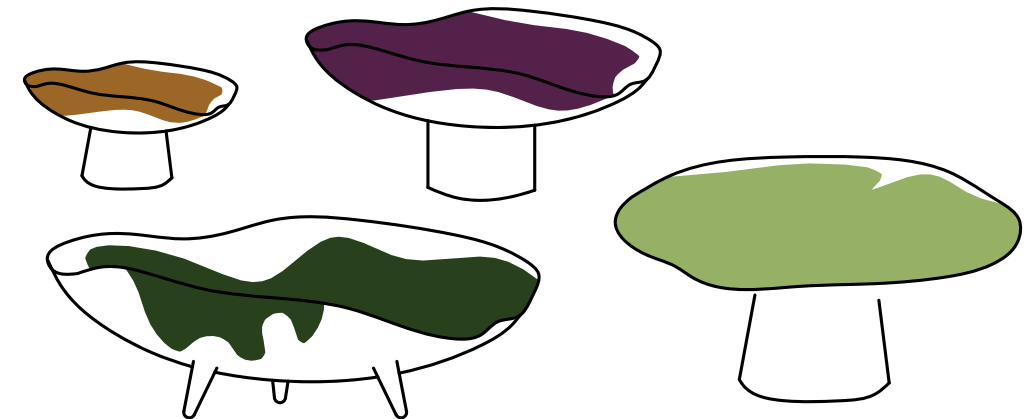
CUPS AND MUGS UP TO 600 ml



Shapes and sizes



LEGGED SCULPTURAL SERVING BOWLS AND CAKE STANDS

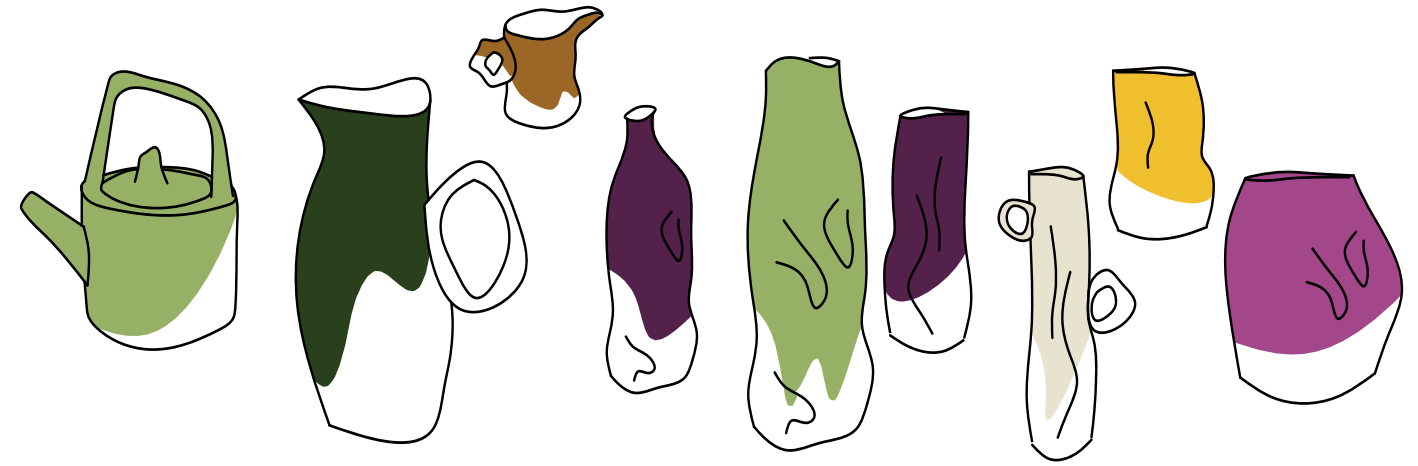


CANDLEHOLDERS



Shapes and sizes

TEAPOTS, BOTTLES, PITCHERS, JUGS, VASES UP TO 1200 ml



Textures



The world of clay is a world where creativity knows no bounds, and beauty finds its most captivating form. In this realm of artistry, one can discover a multitude of texturing possibilities that imbue products with a remarkable richness. The inherent versatility of clay empowers artisans and craftsmen to create intricately textured masterpieces, each exuding its unique charm and allure.

In the hands of our ceramicists, clay reveals a myriad of textures - from gentle curves evoking tranquility to rugged surfaces exuding raw authenticity, and from intricate patterns

showcasing craftsmanship to unparalleled works of art. With each creation, the textures serve as a testament to the infinite possibilities that clay brings forth.





TAILORED PERFECTION FOR SPECIAL ORDERS

When it comes to special orders, we go the extra mile to create exclusive colors, unique color combinations, and exquisite glazes. Each detail is meticulously designed to make your custom creations truly exceptional.

Colors



LATEST COLOR PALETTE

Every year we develop our newest assortment of colors, meticulously crafted for our bespoke products. Our current palette is a delightful fusion of shades to elevate your custom creations.





Orders & Discounts

EXCLUSIVE BENEFITS FOR OUR BUSINESS CLIENTS

We value our business clients and are committed to providing exceptional service. As a token of our appreciation, we offer special offers and generous discounts exclusively for our corporate partners. Depending on the quantity of your orders, you can enjoy discounts of up to 50%,

providing you with significant savings and added value for your investment.

Moreover, we understand the importance of pricing flexibility, and that's why we have no claims to the retail price you set on our products. You have the freedom to price our products in a way that aligns with your business strategy, ensuring you can maximize profitability and cater to your market's needs.

Studio

Follow us on INSTAGRAM
@pottery.and.poetry

The place where you can see our everyday creativity, sometimes making photos and process and caught sunlight moments.

Pottery & Poetry

75 Krum Popov Str.
 1421 Sofia / Bulgaria
 +359 889312498
 hi@potteryandpoetry.eu

www.potteryandpoetry.eu



Design

Maria Baleva

Photography

Maria Baleva

Beatrice Bocheva

Vasil Tanev

Tihomir Rachev

Team

Maria Baleva

Nataliya Zhelyazkova

Zlatka Vacheva

Elena Minkova

Beatrice Bocheva

Emilia Yankova