

BEAR CLIFF SUBDIVISION ON LAKE JAMES
PHASE - 4

A SURVEY OF A PORTION OF THE BLACK BEAR DEVELOPMENT INC. PROPERTY
DESCRIBED IN DEED BOOK 752 PAGE 782
LOCATED IN NEBO TOWNSHIP MCDOWELL COUNTY, N.C.
REFERENCE MAP BOOK 9 PAGE 14 RECORDED IN
THE MCDOWELL COUNTY REGISTRY.

BEAR CLIFF SUBDIVISION ON LAKE JAMES
PHASE - 3 REVISION
REVISION OF MAP BOOK 9 PAGE 72
TO SHOW ADDITION OF LOTS 33 THROUGH 47
AND LABEL LOTS THAT ARE LAKE SET
OR INTERIOR LOTS

NORTH ORIENTATION BASED ON
MAP BOOK 9 PAGE 16, RECORDED
IN THE MCDOWELL COUNTY REGISTRY.

CONSERVATION AREA
PIN 1714-12-1931
DEED BOOK 752
DISCO ROWE 782

LINE	BEARINGS	EASEMENT DISTANCE
L1	N12°59'49"W	22.92'
L2	N47°46'38"E	63.75'
L3	N06°32'55"W	137.61'
L4	S17°57'52"W	137.07'
L5	N17°57'52"E	134.86'

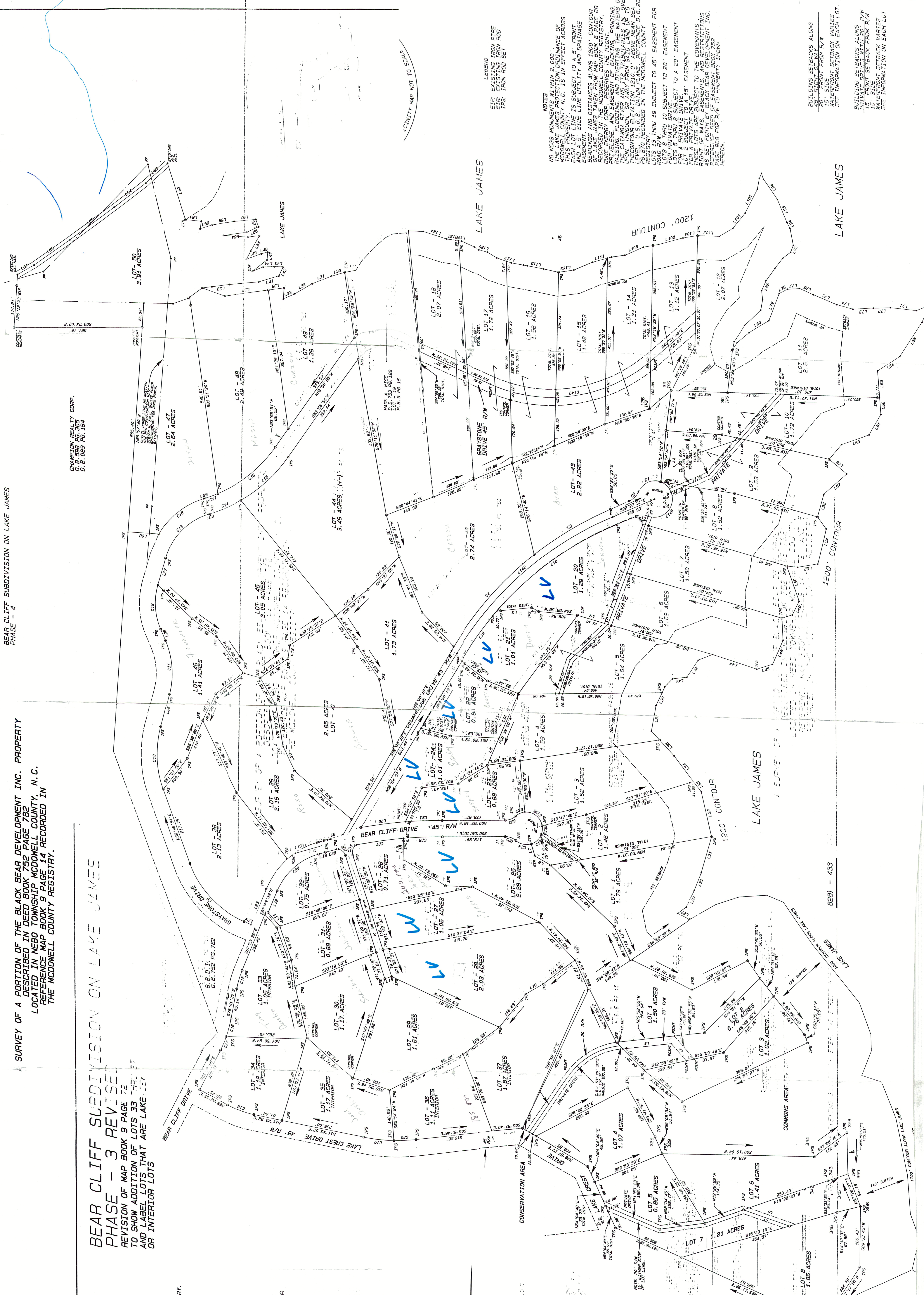
CERTIFY THAT THIS MAP IS AN ACTUAL SURVEY MADE BY ME OR UNDER MY CLOSE PERSONAL SUPERVISION AND THAT THE INFORMATION PLOTTED FROM INFORMATION WAS PREPARED BY ME OR UNDER MY CLOSE PERSONAL SUPERVISION AND SEAL.

LICENSE NUMBER _____
DATE _____

I HEREBY CERTIFY THAT THIS SURVEY WAS MADE BY ME OR UNDER MY CLOSE PERSONAL SUPERVISION AND THAT THE INFORMATION PLOTTED FROM INFORMATION WAS PREPARED BY ME OR UNDER MY CLOSE PERSONAL SUPERVISION AND SEAL.

A REVIEW OFFICER HAS REVIEWED THIS MAP AND FINDS IT TO BE ACCURATE AND COMPLETE AND THAT THE MAP OR PLAN MEETS ALL REQUIREMENTS FOR RECORDING.

RENTAL CABIN AREA
B.B.D.I.
D.B.752 PG.782



CHAMPION REALTY CORP.
D.B. 558 PG. 355
D.B. 089 PG. 184

LAKE JAMES

628) - 433

RENTAL CABIN AREA
B.B.D.I.
D.B.752 PG.782