

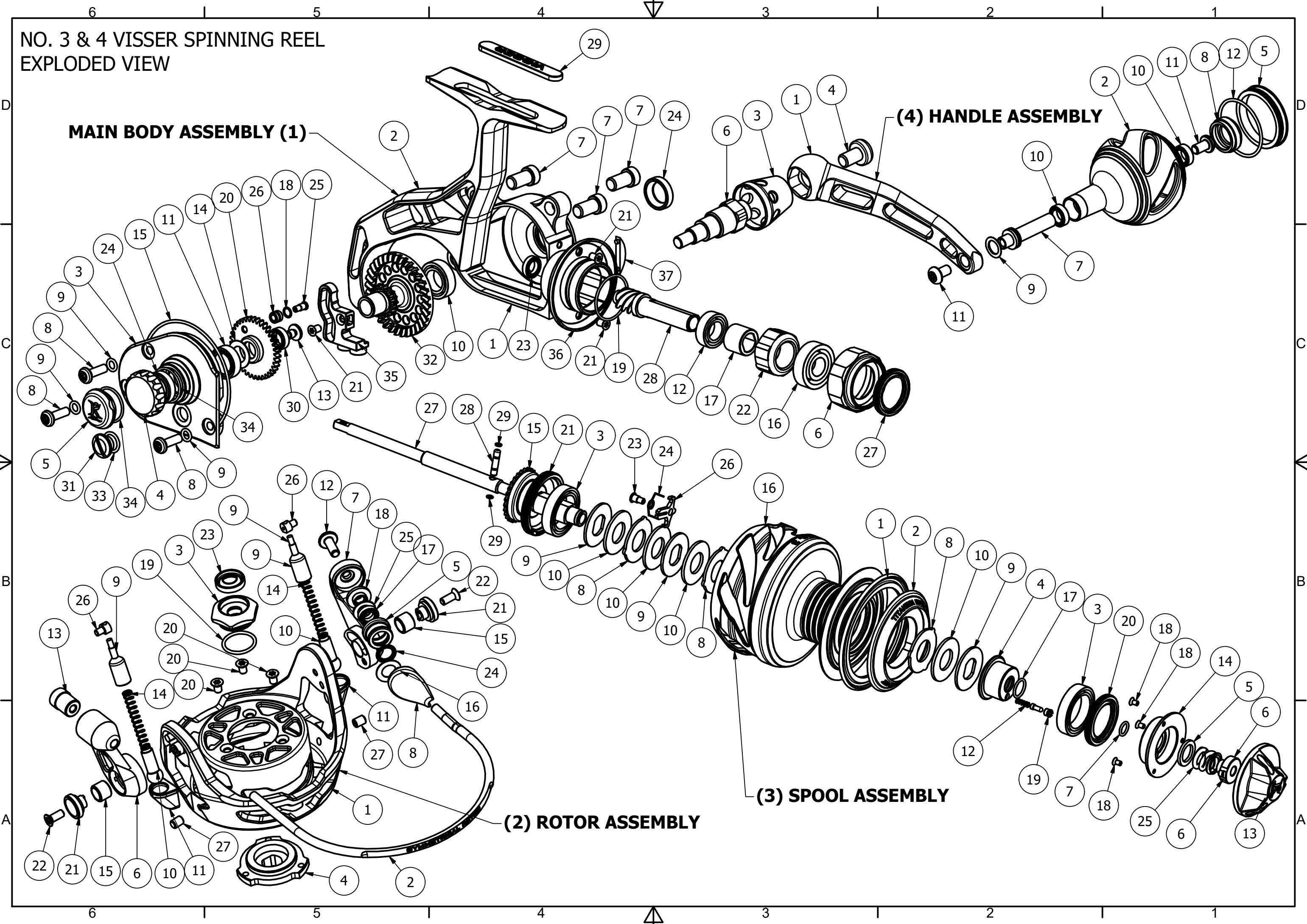
NO. 3 & 4 VISSER SPINNING REEL
EXPLODED VIEW

MAIN BODY ASSEMBLY (1)

(4) HANDLE ASSEMBLY

(3) SPOOL ASSEMBLY

(2) ROTOR ASSEMBLY



VISSER REELS

Part List No. 3 & 4

(1) Main Body Assembly

ITEM	QTY	PART NUMBER	DESCRIPTION
1	1	UB1000-75-02	Gear Housing
2	1	UB1001	Foot
3	1	UB1002-75-01	Slider Cover
4	1	UB1019	Side Cover Cap
5	1	UB1020	Slider Gear Post
6	1	UB1030	Clutch Housing Nut
7	3	UB1052	Foot Mount Screw
8	3	UB1053	Cover Screw
9	3	UB1054	Cover Screw O-Ring
10	1	UB1055	Drive Gear Bearing
11	1	UB1056	Drive Gear Support Bearing
12	1	UB1057-01	Pinion Support Bearing
13	1	UB1059	Slider Bearing Screw
14	1	UB1060	Slider Trust Washer
15	1	UB1062	Cover O-Ring Seal
16	1	UB1063-01	Clutch Bearing
17	1	UB1064	Clutch Sleeve
18	1	UB1065	Slider Post O-Ring
19	1	UB1066	Clutch Housing O-ring
20	1	UB1069	Slider Gear
21	3	UB1070	Spool Shaft / Flange Screw
22	1	UB1091	Huada Clutch
23	1	UB1092	Pinion Support Bearing
24	2	UB1095	Gear Shaft Seal
25	1	UB1069-1	Roller Post-Main Gear
26	1	UB1069-2	Slider Cam Roller
27	1	UB6102	Main Seal
28	1	UB1011-5-01	Pinion
29	1	UB6103	Foot Logo
30	1	UB1015	Slider Gear Bearing
31	1	UB6104	Sight Plug
32	1	UB1012-33-01	Face Gear
33	1	UB1100	O-Ring Sight Cap
34	2	UB1105	Slider Cap Post O-ring
35	1	UB1022-01	Bearing Slider Assy R1
36	1	UB1003-01	Neck Flange
37	1	UB1003-02	Neck Flange incert

(2) Rotor Assembly

ITEM	QTY	PART NUMBER	DESCRIPTION
1	1	UB1028-01	Rotor
2	1	UB1029	Bail
3	1	UB1036	Rotor Nut
4	1	UB1035	Rotor Base
5	1	UB1034	Line Roller
6	1	UB1033	Bail Arm
7	1	UB1032	Lever Arm
8	1	UB1031	Bail Cone
9	2	UB1038	Upper Joint
10	2	UB1039	Lower Ball Joint
11	2	UB1040	Ball Socket Insert
12	1	UB1044	Lever Arm Screw
13	1	UB1043	Counterweight
14	2	UB1041	Bail Spring
15	2	UB1042	Bushing
16	1	UB1045	Trust Washer
17	1	UB1046	Line Roller Bearing
18	1	UB1048	Line Roller Spacer
19	1	UB1050	Seal Cap O-ring
20	3	UB1071	Rotor Hub Screw
21	2	UB1037	Lever Arm Hinge Post
22	2	UB1096	Lever Arm Hinge Screw
23	1	UB1049-1	Seal
24	1	UB1034-1	Line Roller Seal SM
25	1	UB1034-2	Line Roller Seal
26	2	UB1102	Pivot
27	2	UB6105	Stop Screw

(4) Handle Assembly

ITEM	QTY	PART NUMBER	DESCRIPTION
1	1	UB1004	Handle Arm
2	1	UB1006	Crank Knob
3	1	UB1005	Handle Base
4	1	UB1008	Handle Base Screw
5	1	UB1007	Knob Cap
6	1	UB1009	Handle Base Insert
7	1	UB1010	Crank Knob Post
8	1	UB1013	Rubber Cap
9	1	UB1014	Crank Knob Post Seal
10	2	UB1015	5 X 8 X 2.5 mm Bearing
11	2	UB1016	Knob Screw
12	1	UB1018	

(3) Spool Assembly

ITEM	QTY	PART NUMBER	DESCRIPTION
1	1	UB1021-3	Spool Lip Ring
2	1	UB1073	Spool Lip Cap
3	2	UB1074	Spool Bearing
4	1	UB1077	Drag Trust Member
5	1	UB1078	Compression Washer
6	1	UB1079	Drag spring Nut
7	1	UB1081	Retaining Clip
8	3	UB1088	Drag Washer Outer Lock
9	3	UB1089	Drag Washer Inner Lock
10	4	UB1090	Friction Washer
12	1	UB6099	Clicker Spring
13	1	UB1075	Drag Knob
14	1	UB1076	Drag Knob Base
15	1	UB1072_2	Spool Hub
16	1	UB1027-3	No. 3 Spool
17	1	UB1108	O-Ring Drag Trust
18	3	UB1076-2	Drag knob Screw
19	1	UB1098-1	Clicker Retainer
20	1	UB1101	Spool Seal
21	1	UB1085	Spool Seal Back
23	1	UB1087	Drag Click Screw
24	1	UB1084	Clicker Spring
25	1	UB1080	Drag Spring
26	1	UB1086	Drag Clicker
27	1	UB1026	Spool Shaft
28	1	UB1082	Spool Shaft Pin
29	2	UB1083	Spool Shaft Pin O-Ring
43	1	UB6098-01	Drag Knob Click