

VISSER NO. 5, 6, 7, 8 SIZE SPINNING REEL
EXPLODED VIEW

(1) MAIN BODY ASSEMBLY

(3) Spool Assembly

(2) Rotor Assembly

D

D

C

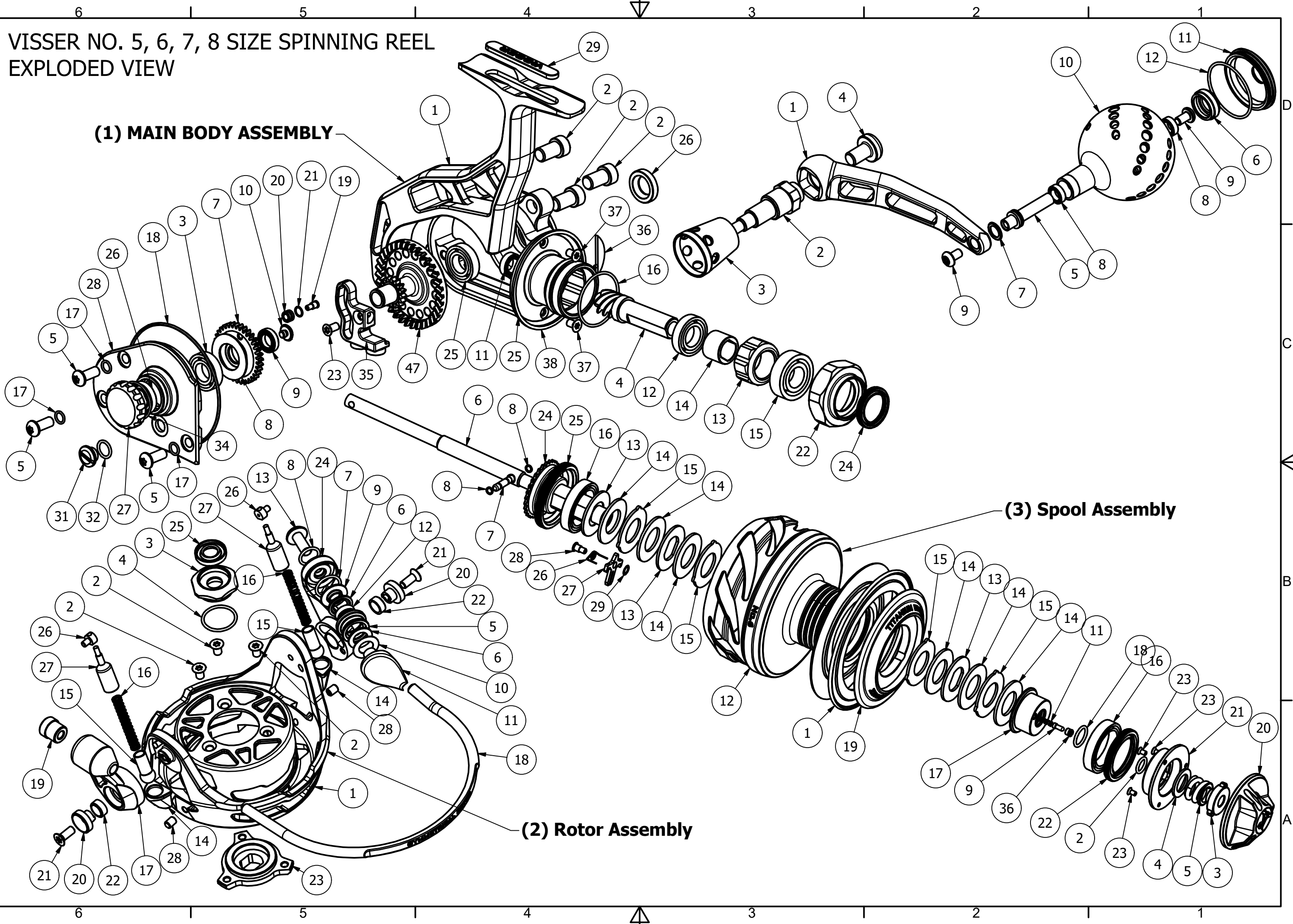
C

B

B

A

A



VISSER REELS

No. 5 - 8 part list

(1) Main Body Assembly

ITEM	QTY	PART NUMBER	DESCRIPTION
1	1	UB6002	Foot
2	3	UB6052	Foot Mount Screw
3	2	UB6055	Drive Gear Bearing
4	1	UB6011	Pinion
5	3	UB6053	Cover Screw
7	1	UB6069	Slider Gear
8	1	UB6060	Slider Trust Washer
9	1	UB6058	Slider Bearing
10	1	UB6059	Slider Bearing Screw
11	1	UB6092	Pinion Support Bearing
12	1	UB6057-01	Pinion Center Bearing
13	1	UB6091	Clutch
14	1	UB6064	Clutch Sleeve
15	1	UB6063-01	Clutch Bearing
16	1	UB6066	Clutch Housing O-ring
17	3	UB6054	Cover Screw O-Ring
18	1	UB6062	Cover Seal
19	1	UB6069-1	Slider Roller Post
20	1	UB6069-2	Slider Roller
21	1	UB6065	Slider Post O-Ring
22	1	UB6030	Clutch Housing Nut
23	1	UB6017	Slider Support Screw
24	1	UB6102	Main Seal
25	1	UB6000-01	Gear Housing
26	2	UB6095	Gear Shaft Seal
27	1	UB6019	Side Cover Cap
28	1	UB6001-01_2	Side Cover
29	1	UB6103	Foot Logo
31	1	UB6104	Sight Plug
32	1	UB1100	Sight plug O-Ring
34	1	UB6019-01	Seal Cap O-ring
35	1	Assy R1	Slider Assy R1
36	1	UB6003-02	Neck Flange Insert
37	2	UB6071	Mounting Screw
38	1	UB6003-01	Neck Flange
47	1	UB6012-02	Face Gear

(2) Rotor Assembly

ITEM	QTY	PART NUMBER	DESCRIPTION
1	1	UB6028	Rotor
2	3	UB6071	Mounting Screw
3	1	UB6036-1	Rotor Nut
4	1	UB6050	Seal Cap O-ring
5	1	UB6034	Line Roller
6	2	UB6034-1	Line Roller Seal
7	1	UB6034-2	O-ring Bail Arm inner
8	1	UB6034-3	O-ring
9	1	UB6045	Spacer Line Roller
10	1	UB6047	Line Roller Spacer
11	1	UB6031	Bail Cone
12	1	UB1015	5 X 8 X 2.5 mm Bearing
13	1	UB6034-4	Lever Arm Screw
14	2	UB6040	Ball Socket Insert
15	2	UB6039	Lower Ball Joint
16	2	UB6041	Bail Spring
17	1	UB6033	Bail Arm
18	1	UB6029	Bail
19	1	UB6043	Counterweight
20	2	UB6037	Lever Arm Hinge Post
21	2	UB6096	Lever Arm Hinge Screw
22	2	UB6042	Bushing
23	1	UB6035	Rotor Base
24	1	UB6032	Bail Lever Arm
25	1	UB6049-1	Seal
26	2	UB6048	Pivot Pin
27	2	UB6038-1	Upper Joint
28	2	UB6105	Stop Screw

(4) Handle Assembly

ITEM	QTY	PART NUMBER	DESCRIPTION
1	1	UB6004	Handle Arm
2	1	UB6009-1	Handle Base Insert
3	1	UB6005-1	Handle Base
4	1	UB6008-1	Handle Base Screw
5	1	UB6010-1	Crank Knob Post
6	1	UB6013	Rubber Cap
7	1	UB1014	Crank Knob Seal
8	2	UB1015	5 X 8 X 2.5 mm Bearing
9	2	UB1016	Knob Screw
10	1	UB6006-01	Crank Knob
11	1	UB6007-01	Crank Knob Cap
12	1	UB6018	Crank Knob Cap O-ring

(3) Spool Assembly

ITEM	QTY	PART NUMBER	DESCRIPTION
1	1	UB6021-6	Spool Lip Ring
2	1	UB6081	Retaining Clip
3	1	UB6079	Drag Spring Nut
4	1	UB6078	Compression Washer
5	1	UB6080	Drag Spring
6	1	UB6026	Spool Shaft
7	1	UB6082	Spool Shaft Pin
8	2	UB6083	Spool Shaft Pin O-Ring
9	1	UB6098	Drag Knob Click
11	1	UB6099	Clicker Spring
12	1	UB6027-6	No. 6 Spool
13	3	UB6089	Drag Washer Inner Lock
14	6	UB6090	Friction Washer
15	4	UB6088	Drag Washer Outer Lock
16	2	UB6074	Spool Bearing
17	1	UB6077	Drag Trust Member
18	1	UB6034-3	O-ring
19	1	UB6073-6	Spool Lip Cap
20	1	UB6075	Drag Knob
21	1	UB6076	Drag Knob Base
22	1	UB6101	Spool Seal Front
23	3	UB6097	Drag Knob Screw
24	1	UB6072	Spool Hub
25	1	UB6015	Spool Seal-Back
26	1	UB1084	Clicker Spring
27	1	UB6086	Drag Click
28	1	UB1087	Drag Click Screw
29	1	UB1103	Drag Click Washer
36	1	UB1098-1	Clicker Retainer