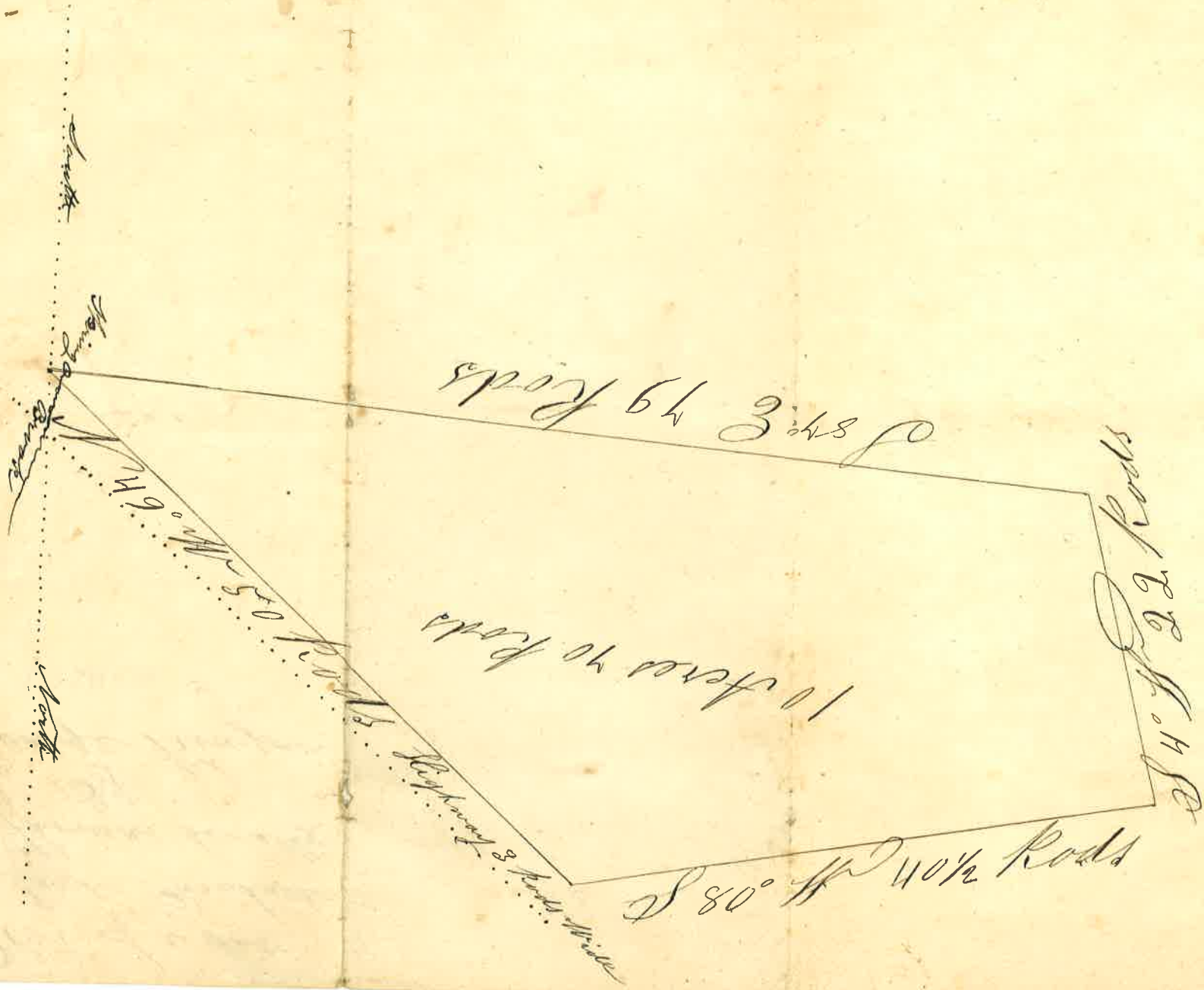


Plot of a lot  
of Land Purchased  
of Thomas Sewally  
By  
George Pinyon

9/23/1839



Plot of a lot of land lying on the highway  
 that runs from Greenville to Lippitts village  
 in the town of Warwick Purchased of  
 Thomas Levally By George Kenyon  
 Surveyed and Plated Sept<sup>r</sup> 28<sup>th</sup> 1839  
 By Louis Greene Surveyor  
 Scale 10 Rods to an Inch