



bipv korea

**Building
Integrated
Photovoltaic
System**

BiPV CREATIONS

BiPV REFERENCES



Yeomchang-dong, Seoul _ Hanwall 51Kw

1. Type of BiPV used
2. Project
3. Cost to install
4. Solar energy generated

1. SOLWALL

2. Yeomchang-dong, Seoul
3. US\$4,000/kW
4. 2hour/DAY(50kW*2=100kW/DAY)

1. POSSOLAR

2. 9 bus stop in Seoul
3. US\$4,000won/kW
4. 2.5hour/DAY (90kW*2.5=225kW/DAY)



9 Smart Shelters in Seoul _ Possolar 90Kw

BiPV REFERENCES



Sejong City _ Solwall 20Kw

1. SOLWALL

2. Sejong City
3. US\$3,000/kW
4. 2.5hour/DAY ($20\text{kW} \times 2.5 = 50\text{kW/DAY}$)



Gwangju City_ CIGS Flex 5Kw

1. CIGSflex

2. Gwangju city
3. US\$2,700/kW
4. 4.5hour/DAY ($5\text{kW} \times 4.5 = 22.5\text{kW/DAY}$)



Cheongju City _ Soltile 5Kw

1. SOLTILE

2. Wonpyeong-dong, Cheongju
3. \$US3,000/kW
4. 3.5hour/DAY ($5\text{kW} \times 3.5 = 17.5\text{kW/DAY}$)

BiPV REFERENCES



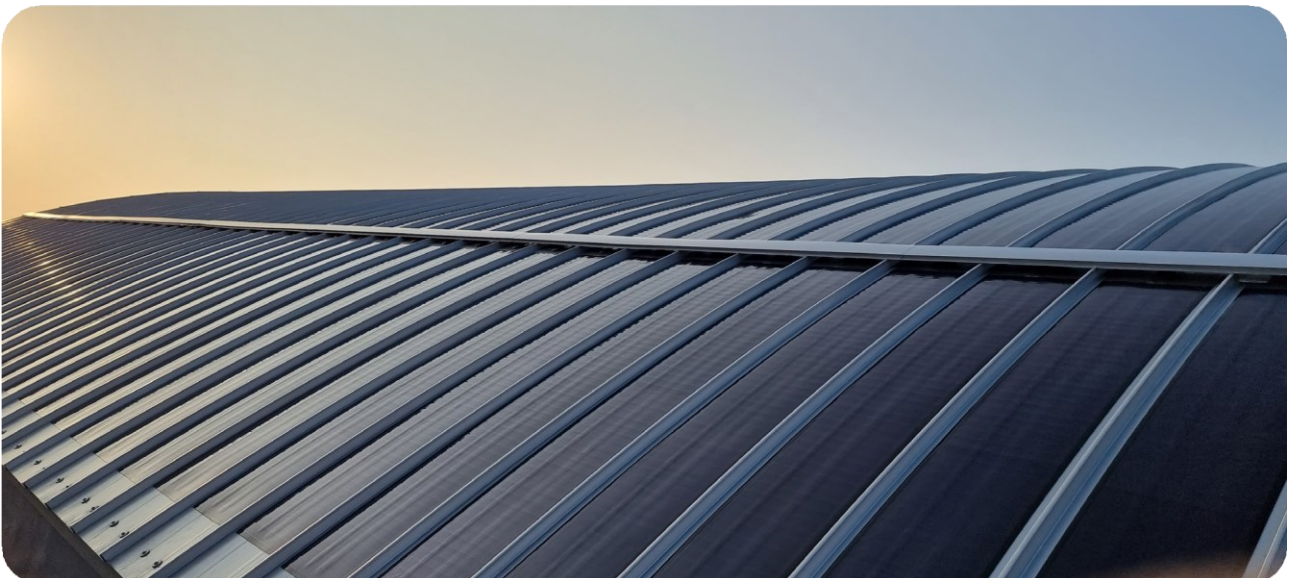
1. SOLWALL

2. Jongno-gu, Seoul
3. US\$3,400/kW
4. 2hour/DAY ($30\text{kW} \times 2 = 60\text{kW/DAY}$)

Seoul city_Hanwall 51Kw

1. CIGSflex

2. Buan, Jeollabuk-do
3. US\$2,700/kW
4. 3.5hour/DAY ($32\text{kW} \times 3.5 = 112\text{kW/DAY}$)



Sports stadium_CIGS Flex 32Kw

BiPV REFERENCES



Yongin City _ CIGS Flex 5Kw



Gimcheon-si linked vinyl house_ Mono Flex 30Kw



Kwangju city_ CIGS Flex 3Kw



Cheongju city_ Soltile 5Kw



Seoul Bus stop_ Possolar 5Kw

BiPV REFERENCES



Daehyun dong_Roof solar 20Kw



Haemil dong_Solwall 20Kw



Jinju Bus stop_Mono Flex 9Kw



Unjoong dong_CIGS Flex 9Kw