

# Exit Devices

## Fire Rated ECore 2hr

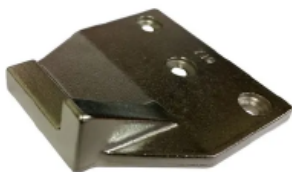


SGPDX55LL2

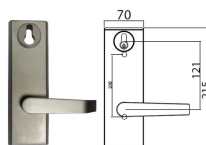
The LOCKTON Art. SGPD250-F-SS-WD-1 Fire Rated Wide Panic Exit Device (Panic Bar).

### PRODUCT SPECIFICATION

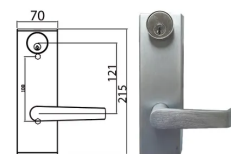
- Complies with BS EN1125
- Rim type installation
- 304B Stainless steel construction
- High Shock resistant latching mechanism
- All inside components are of high rust resistant alloy & Heavily electroplated steel to avoid corrosion
- NON Handed
- External access trims are available
- Can use a 201 "Round" Cylinder to open from outside
- Latch automatically dead latches when door is closed
- Suits standard door size (1120mm) can be cut down up to 170mm to suit smaller doors



SGP0570



SGPDXEL-SS  
External Trim Lever  
with Escutcheon



SGPDXELSS-E

Product Code	Description	Apn number	List PRICE
SGPDOS710	OVERLAPPING STRIKE FIRE RATED SS	9309000400133	\$70.00
SGPD250-F-SS	PANIC EXIT RIM TYPE FIRE RATED SS	9309000400126	\$778.00
SGPDXELSS-E	PANIC EXTERNAL ENTRY FUNCTION	9309000	\$310.00
SGPDXELSS	PANIC EXTERNAL STOREROOM FUNCTION	9309000	\$310.00
SGPDX55LL2SS	PANIC EXTERNAL STOREROOM FUNCTION	9309000	\$280.00

All prices are exclusive of GST.

# Exit Devices

## Fire Rated Ecore 2hr



The LOCKTON Art. SGPD250-F-VR-SS-WD-1 Fire Rated Wide Panic Exit Device (Panic Bar).

### PRODUCT SPECIFICATION

- Complies with BS EN1125
- Rim type installation
- 304B Stainless steel construction
- High Shock resistant latching mechanism
- All inside components are of high rust resistant alloy & Heavily electroplated steel to avoid corrosion
- NON Handed
- External access trims are available
- Can use a 201 "Round" Cylinder to open from outside
- Latch automatically dead latches when door is closed
- Suits standard door size (1120mm) can be cut down up to 170mm to suit smaller doors



The LOCKTON Art. SGPD250-WD-F-DDKIT Panic Exit Device (Panic Bar) Wide Fire Rated Double Door Kit

### PRODUCT SPECIFICATION

- Complies with BS EN1125
- Rim type installation
- 304B Stainless steel construction
- High Shock resistant latching mechanism
- All inside components are of high rust resistant alloy & heavily electroplated steel to avoid corrosion
- NON Handed
- Alternative external access options available
- Can use a 201 "Round" Cylinder for exterior access
- Latch automatically dead latches when door is closed
- Standard dimensions width 1120mm (Single & Double Point)
- Suits standard door size (1120mm), can be cut down up to 170mm to suit smaller doors

### Kit Includes:

- 1 x SGPD250-F-SS-WD-1 Single Point Wide Fire Rated Panic Bar
- 1 x SGPD250-F-VR-SS-WD-1 Double Point Wide Fire Rated Panic Bar
- 1 x SGPDOS710 Overlapping Strike

The LOCKTON Art. SGPDETR-G - PANIC EXIT DEVICE - GUIDE for Extension Rods.

### PRODUCT SPECIFICATION

- SGPDETR-G Guide for vertical rods
- Perfect for use with taller doors
- Helps keep rods straight
- Material: Stainless Steel
- Compatible with Art. ID SGPDETR-1 and SGPDETR-2 (please see RELATED PRODUCTS)

### PRODUCT SPECIFICATION

- 600mm extension rod
- Designed to work with LOCKTON PANIC EXIT DEVICES

Product Code	Description	Apn number	List Price
SGPD250-F-VR-SS	VERTICAL SINGLE DOOR RIM PANIC EXIT	9309000	\$1086.00
SGPDETR-2	EXTENSION ROD SS	9309000	\$78.00
SGPDETR-G	GUIDE FOR VERTICAL RODS	9309000	\$78.00
SGPD250-WD-F-DDKIT	DOUBLE DOOR PANIC BAR KIT	9309000	\$1786.00

All prices are exclusive of GST.