

*Luxury*  
LIFESTYLE  
AWARD WINNER  
2023



**EziHomes**  
INTERNATIONAL

**2024**  
**AWARD WINNING HOMES • APARTMENTS • BUNGALOWS • VILLAS**



'Building a Better Future'

At EziGroup Europe we believe in building a better future for our clients through exceptional construction services. From design to completion, we're dedicated to delivering residential or commercial projects that exceed expectations.

### An international partnership with Group Uno

Group Uno is a multi-award winning, full-service promotion and construction company with over 20 years of experience in the industry. Specialising in both residential and commercial projects, including new construction, remodels, and renovations.

With team of skilled professionals - dedicated to providing high quality work and exceptional customer service both before and after the sale process.

Recognised for continuous excellence over the years in the industry with multiple awards for the projects and architectural designs... The company is committed to using the latest techniques and technologies to ensure that each project is completed on time with an exceptional build finish.

#### A MULTI AWARD WINNING COMPANY





**MURCIA REGION**



**SAN JAVIER**



**SAN JAVIER**



**ROLDAN**



**SAN PEDRO DEL PINATAR**



**SAN PEDRO DEL PINATAR**



**ROLDAN**



**LOS BELONES**



**LOS BELONES**





SCAN ME

## ELISA BEACH VILLAS

**3**



**2**



M<sup>2</sup>  
**94**



BUILD

M<sup>2</sup>  
**120+**



PLOT



SCAN ME

## VILLA VENTURA

**3**



**3**



M<sup>2</sup>  
**115**



BUILD

M<sup>2</sup>  
**190**



PLOT

- BEACH LOCATION (650 METERS)
- VILLAS WITH POOLS
- FITTED KITCHEN APPLIANCES
- STONE FEATURE WALLING
- NEXT TO LARGE PARK AREA



# VILLAS WITH POOLS

**SAN JAVIER**  
MURCIA REGION



## MONTE VISTA LUX

3



2



M<sup>2</sup>  
97



BUILD

M<sup>2</sup>  
260+



PLOT



SCAN ME



**SMALL PRIVATE DEVELOPMENT  
FITTED KITCHEN APPLIANCES  
STONE FEATURE WALLING  
BBQ TO GROUND FLOOR  
DETAILED EXTERIOR FINISHES  
GENEROUS PLOT SIZES  
OFF ROAD PARKING  
NEXT TO PARK AREA  
RESIDENTIAL SETTING**





SCAN ME

## PERLA LUX VILLA

3



2



M<sup>2</sup>  
160



BUILD

M<sup>2</sup>  
600 +



PLOT

- TOWN CENTRE PLOTS
- RESIDENTIAL LOCATION
- SIGNATURE STYLE HOME
- DOUBLE GARAGE
- ROOFTOP SOLARIUM
- SUMMER KITCHEN & PERGOLA
- STONE FEATURE WALLING
- LARGE PLOT SIZES



## VILLAS WITH POOLS

## SAN JAVIER

MURCIA REGION





**MASTER PLAN  
PERLA LUX VILLAS**

**PLOT 2  
INDIVIDUAL PLAN**



**SAN JAVIER**  
MURCIA REGION



SCAN ME

## RESIDENTIAL LISBOA

2



2



M<sup>2</sup>  
63



BUILD

M<sup>2</sup>  
68



SOLARIUM

M<sup>2</sup>  
10



TERRACE

- AWARD WINNING PROJECT (2023)**
- 350 METERS TO THE BEACH**
- TOWN CENTRE LOCATION**
- SIGNATURE STYLE HOMES**
- GARAGE PARKING (PHASE I)**
- ROOFTOP SOLARIUM**
- LARGE COMMUNAL POOL**
- DETAILED FINISHES**
- GROUND FLOOR & PENTHOUSE MODELS**



*Luxury*  
LIFESTYLE  
AWARDS

2023 BEST LUXURY RESIDENTIAL PROPERTY IN MURCIA, SPAIN



**LUXURY APARTMENT**

**SAN PEDRO DEL PINATAR**

**MURCIA REGION**





## GROUND FLOOR PLAN

M<sup>2</sup> 63 M<sup>2</sup> 10



2 BEDROOM  
2 BATHROOM  
FRONT TERRACE  
REAR PATIO



## PENTHOUSE FLOOR PLAN

M<sup>2</sup> 63 M<sup>2</sup> 68



2 BEDROOM  
2 BATHROOM  
FRONT TERRACE  
ROOF SOLARIUM







# SAN PEDRO DEL PINATAR




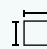
MURCIA REGION



SCAN ME

## SERENDIPIA VILLAS

<b>2</b>	<b>2</b>	<b>M<sup>2</sup> 68</b>	<b>M<sup>2</sup> 155</b>
			
		<b>BUILD</b>	<b>PLOT SIZE</b>

<b>3</b>	<b>2</b>	<b>M<sup>2</sup> 81</b>	<b>M<sup>2</sup> 155</b>
			
		<b>BUILD</b>	<b>PLOT SIZE</b>

- SPANISH VILLAGE & GOLF SETTING**
- MODERN FINISHES**
- PRIVATE SWIMMING POOL**
- ROOFTOP SOLARIUM**
- FITTED KITCHEN APPLIANCES**
- TERRACED AREA**
- 2 OR 3 BEDROOM DESIGNS**
- DISTANT SEA AND COASTAL VIEWS**
- PARK & CENTRAL LOCATION**



## VILLAS WITH POOLS

**ROLDAN**  
MURCIA REGION

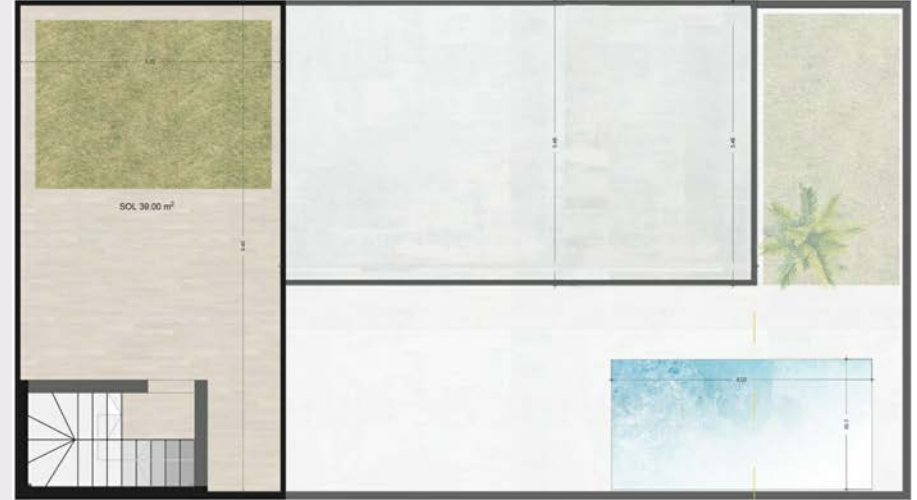




**2 BEDROOM FLOOR PLAN**



**3 BEDROOM FLOOR PLAN**





SCAN ME

## SERENDIPIA LUX VILLAS

3



2



M<sup>2</sup>  
95



BUILD

M<sup>2</sup>  
205 +



PLOT SIZE

### NEW FOR 2024 - DETACHED MODEL

- SPANISH VILLAGE & GOLF SETTING
- MODERN FINISHES
- PRIVATE SWIMMING POOL
- ROOFTOP SOLARIUM
- STORAGE ROOM
- STONE DETAIL FINISH
- FITTED KITCHEN APPLIANCES
- TERRACED AREA
- 3 BEDROOM DESIGNS
- DISTANT SEA AND COASTAL VIEWS
- PARK & CENTRAL LOCATION



## VILLAS WITH POOLS

**ROLDAN**  
MURCIA REGION





## SERENDIPIA LUX MASTER PLAN

### INDIVIDUAL PLAN 3 BEDROOM MODEL





SCAN ME

## RESIDENTIAL LISBOA II

2



2



M<sup>2</sup>  
63



BUILD

M<sup>2</sup>  
68



SOLARIUM

M<sup>2</sup>  
10



TERRACE

**2024  
NEW PHASE LAUNCH**

- AWARD WINNING PROJECT**
- TOWN CENTRE LOCATION**
- SIGNATURE STYLE HOMES**
- OFF ROAD PARKING**
- ROOFTOP SOLARIUM (PENTHOUSE)**
- LARGE COMMUNAL POOL**
- COMMUNAL GARDENS**
- DETAILED FINISHES**
- GROUND FLOOR & PENTHOUSE MODELS**

**TO VIEW PLANS SEE PAGE 9**



**LUXURY APARTMENT**

**SAN PEDRO DEL PINATAR**

**MURCIA REGION**



## VILLA CRISTINA

3



3+



M<sup>2</sup>  
130



BUILD

M<sup>2</sup>  
300+



PLOT



Dropbox



SCAN ME



**2024  
NEW PHASE LAUNCH**

**INDIVIDUAL CUSTOM BUILD  
POPULAR SELLING VILLA  
ALL BEDROOM EN-SUITE  
DETAILED EXTERIOR FINISHES  
GENEROUS PLOT SIZES  
PRIVATE SWIMMING POOL  
TERRACE AREAS  
STORAGE ROOM  
RESIDENTIAL SETTING**



2023 BEST LUXURY CUSTOM HOME DEVELOPER IN MURCIA, SPAIN



We are dedicated to providing exceptional customer service and support.

Our team is here to assist you with any questions or assistance you may need regarding our products or services. Please don't hesitate to reach out to us by phone, email, or whatsapp!

We look forward to seeing you soon.



**EziHomes International Ltd**  
(Part of the EziGroup Europe Ltd)  
Saxon House - 27 Duke Street, Chelmsford Essex. CM1 1HT

**T: 01245 922122**  
**M: 07940 878520**

**E: [property@ezihomes.co.uk](mailto:property@ezihomes.co.uk)**  
**W: [www.ezigroup.co.uk](http://www.ezigroup.co.uk)**

THE INFORMATION SUPPLIED IN THIS INFORMATION IS TO BE USED AS A GUIDE ONLY - GROUP UNO IS PART OF GRUPO IN ONE PROPERTY GROUP S.L. ALL IMAGES, MEASUREMENTS ARE TO BE USED AS A GUIDELINE ONLY - FULL DETAILED PLANS ARE AVAILABLE ON REQUEST. THIS INFORMATION HAS NO CONTRACTUAL VALUE. ALL IMAGES, PLANS, RENDERS © 2024 GROUP UNO