

HUMMER CEA 2.2 Carbon Evaporation Accessory

The Hummer CEA 2.2 is designed to provide accurate, repeatable carbon coatings in less than two minutes.

Applications:
X-Ray Microanalysis
Carbon Shadowing
Pre-coating prior to metal coating



Coating Head Detail

**Evaporate Carbon using your Hummer sputter coater.
Available for Hummer models 6.2 and 6.6**



Hummer model 6.2 sputter coater shown with CEA and thickness monitor

**HUMMER ® IS A REGISTERED TRADEMARK OF
ANATECH USA
CARBON EVAPORATION ACCESSORY**

Operation

The **Hummer CEA 2.2** deposits thin films of carbon quickly and conveniently.

Carbon is the preferred material for the conductive coating of SEM specimens for energy dispersive X-ray analysis, since the carbon coating does not interfere with the analysis.

All of the carbon rods are pre-sharpened allowing repeat settings for consistent coatings run to run. The carbon coating system evaporates a point source of carbon centered between two electrodes with up to 100 amps of electrical current.

Safety interlocks ensure operator and machine safety.

Samples up to 3.25" diameter or 12 microscope stubs can be coated in a single operation.

Specifications

Input Power - 115 VAC, 50-60 Hz, 6
amps

Power Supply - 10 Volts, 0-100 amps

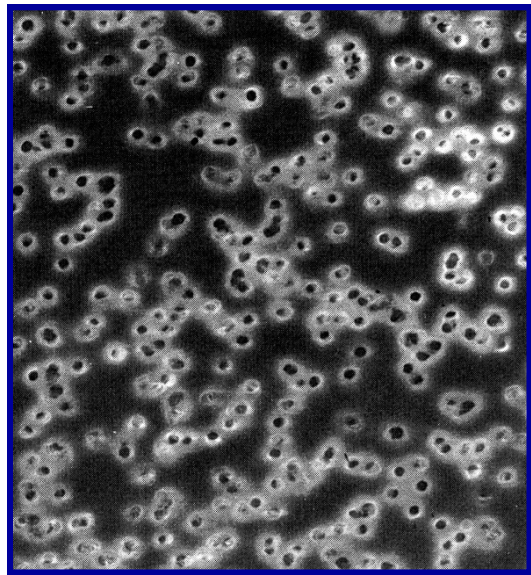
Dimensions - 11"W x 20"D x 14"H

Weight - 45 lbs

Includes: 20-Presharpened carbon rods and
dedicated chamber

Optional Items

Pre-Sharpened spare carbon rods,
20 rods per package.



Carbon Coated Nucleopore Filter

Photo courtesy of :
Center for Microanalysis, University of Maryland

CALL ANATECH USA TODAY TO DISCUSS YOUR APPLICATION

Anatech USA
1395 Greg Street
Suite 110
Sparks, NV 89431
775-657-8685

ANATECH USA WEB SITE: www.anatechusa.com

EMAIL: info@anatechusa.com