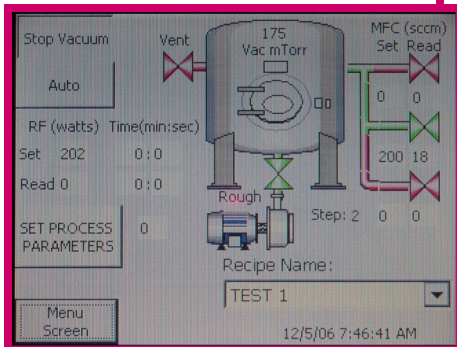


## 18" ALUMINUM REACTOR PLASMA SYSTEM

SCE-AL-1818



Siemens S7-200 Series "Touch Panel" Control  
Graphic Operational Display - Pass Word Protected

**Applications: Aerospace, Bio-Medical and Electronics**

Plasma treatment cleans parts to increase surface energy, which produces higher bond strengths, fewer adherence voids and better continuity.

Plasma can be used on a variety of materials: biomaterials, ceramics, composites, metals, plastics and polymers.

Anatech USA's line of plasma systems offer either dedicated single function or come in a PLC controlled "Touch-Panel" model with 10 or more recipes on board.

# 18" Aluminum Plasma Reactor System

## Control System:

Siemens Programmable logic controller S7-200

### LCD Display:

- Pressure display
- Gas flow with mass flow controller
- Single gas input
- Process time remaining

## Power Requirements:

- 115-VAC 15A 50/60-HZ System  
220-VAC optional
- 208/220 3P 30A Vacuum pump

## Control System Options:

- 4 Gas channels
- PC control
- Data logging
- Capacitance manometer
- Temperature sensor
- Throttle valve
- Nitrogen backfill
- Slow pump and particle reduction
- Process light (Optional)
- Emergency Off (EMO)

## Dimensions:

- Cabinet 28" x 28" x 65" height
- Pump 30" L x 12" W x 18" H
- Shipping weight 1050 lbs Crated

## Reactor Chamber 18" Aluminum:

- 18" Cube aluminum chamber
- Shelves 6 (3-Hot), (3-Ground)
- Shelves can be configured for primary or downstream plasma
- Front loading
- View port on front door with UV shield
- **Optional** Robotic load/unload
- **Optional** In-line configuration

## Vacuum System:

- 42.4 CFM Standard
- Main Vacuum Valve (system controlled)
- 6 feet of 1½" ID Vacuum line
- All interconnecting parts

## RF Power Source:

- 0-600 Watt, 13.56 MHz
- Forward and reflected power reading  
3% Power regulation
- **Optional** 1000 Watt 13.56 MHz supply
- Low frequency optional

## Vacuum System Options:

- Oxygen service
- Corrosive service
- Mist filter
- Certain applications may require higher gas through put than standard. Pump needs to be sized accordingly.

**CALL ANATECH USA TODAY TO DISCUSS YOUR APPLICATION**

**Anatech USA  
1395 Greg Street  
Suite 110  
Sparks, NV 89431  
775-657-8685**