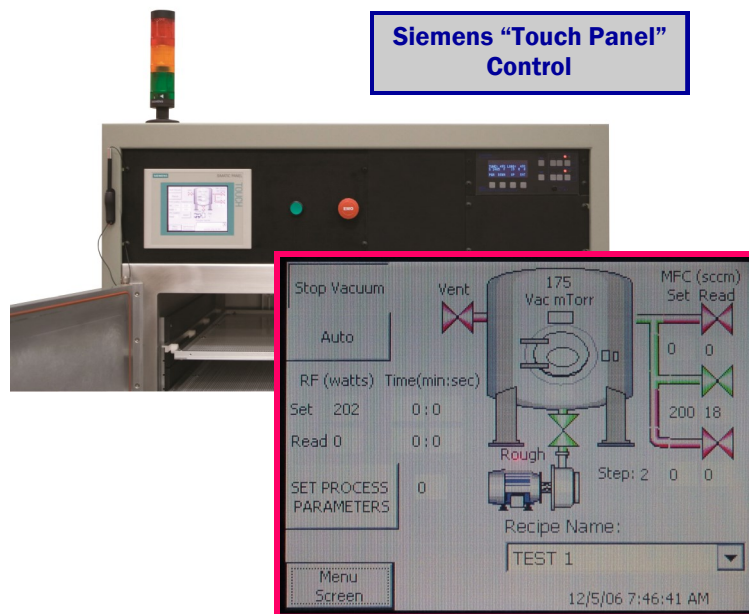


## 30" Aluminum Reactor Plasma System



Vacuum and Process Control Functions are clearly visible on one easy to read display



### Applications: Aerospace, Bio-Medical and Electronics

Plasma treatment cleans parts to increase surface energy, which produces higher bond strengths, fewer adherence voids and better continuity.

Plasma can be used on a variety of materials: biomaterials, ceramics, composites, metals, plastics and polymers.

Anatech USA's line of plasma systems offer either dedicated single function or come in a PLC controlled "Touch-Panel" model with 10 or more recipes on board.

## **30" Aluminum Reactor Plasma System**

### **Control System:**

Siemens S7 Programmable Logic Controller

LCD Display:

- "Touch-Panel" display screen
- Pressure display
- Gas flow with mass flow controller
- Single gas input
- Process time remaining
- Emergency Off (EMO)

### **Control System Options:**

- 3 Gas channels
- PLC control
- Data logging
- Capacitance manometer—corrosive use
- Temperature sensor
- Throttle valve
- Nitrogen backfill
- Slow pump and particle reduction
- Photo end point for photoresist stripping

### **Reactor Chamber 30" Aluminum:**

- Shelves can be configured for primary or downstream plasma
- 30" Cube aluminum chamber
- Multiple shelves— (8)
- Front loading
- View port on front door RF and UV shielded

### **RF Power Source:**

- 0-1000 Watt, 13.56 MHz
- Forward and reflected power reading
- 3% Power regulation
- Fully protected circuitry

Optional:

- Low frequency
- Coolant Chiller

### **Power Requirements:**

220VAC Standard  
208/220 3P 30A Vacuum Pump

### **Dimensions:**

Standard 30" equipment rack  
36" W x 60" H x 36" D  
Pump dimensions  
30" L x 12" W x 18" H  
Shipping weight  
1500 lbs Crated weight (estimated)

### **Vacuum System:**

85 CFM Standard service with all manifold interconnects

### **Vacuum System Options:**

- Dry Pumps
- Oxygen service
- Corrosive service
- Mist filter—exhaust
- Oil filtration—Fomblin
- Larger pumps required for some applications



**CALL ANATECH USA TODAY TO DISCUSS YOUR APPLICATION**  
**1395 Greg Street Suite 110 Sparks, NV 89431**  
**775-657-8685**