



The TabEASE  
Company LLC

Sample 482-062824-279

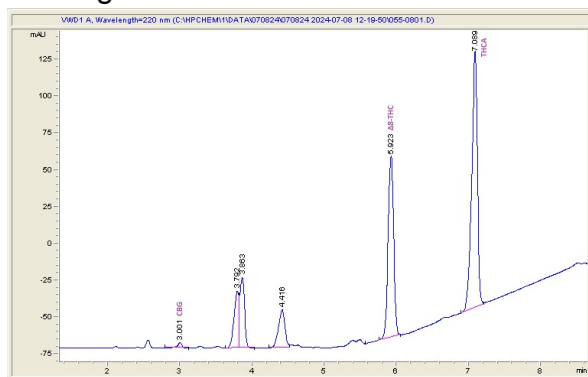
White Runtz Sauce

Sample Submitted: 06-28-2024; Report Date: 07-08-2024

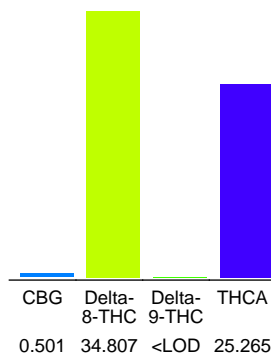
## White Runtz Sauce

Extract / Concentrate

### Chromatogram



### Cannabinoid Profile



### Cannabinoid Profile by HPLC

0.00%

Delta-9-THC

0.00%

CBD

60.57%

Total Cannabinoids

Cannabinoid	% wt	mg/g
CBG	0.501	5.01
Delta-8-THC	34.81	348.07
Delta-9-THC	<LOD	<LOD
THCA	25.27	252.65
<b>Total Cannabinoids</b>	<b>60.57</b>	<b>605.7</b>
<b>Calculated Total THC</b>	<b>22.16</b>	<b>221.57</b>
<b>Calculated CBD Yield</b>	<b>0.00</b>	<b>0.00</b>

Calculated Total THC = Delta-9-THC + 0.877 \* THCA

Calculated Maximum CBD Yield = CBD + 0.877 \* CBDA

**Notes:** Delta-9-THC Limits of Detection (LOD): 0.001%

**Marin Analytics, LLC**

250 Bel Marin Keys Blvd, Suite D4  
Novato, CA 94949

833-321-TEST / info@marinanalytics.com

**Mike Clemmons**  
Lab Manager

This sample has been tested by Marin Analytics, LLC using valid testing methodologies and a quality system. Values reported relate only to the sample tested. Marin Analytics, LLC makes no claims as to the efficacy, safety, or other risks associated with any detected or non-detected levels of any compounds reported herein. This Certificate shall not be reproduced except in full without the written approval of Marin Analytics, LLC. Copyright 2023 Marin Analytics, LLC All Rights Reserved.