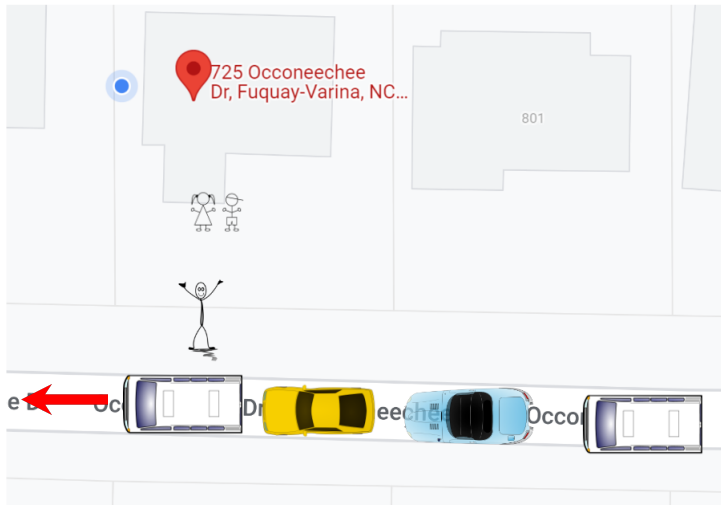


Drop off and Pick up Plan

Unfortunately, we live on a street without shoulder parking. To avoid congestion and prevent angry neighbors, let's cooperate together for a safe and efficient Drop off and Pick up!

The Plan:



Pick up starts at 8:50

We are going to handle this like an elementary school carpool line. I will be in the driveway, you will line up coming from the East (so your passenger door is parallel with my driveway). You will pull up, I will help your child out of their carseat and out of the vehicle, you will wave goodbye and pull away from the house. The next parent will move up after you and follow the same steps. I will take a couple of children at a time to the door where my assistant will take them upstairs for play.

Pick up starts at 1:00

Same system for Pick up; I have arranged my schedule to be outside (weather permitting) at pick up time each day. We will follow the same plan: you will pull up, I will load your child into the vehicle, I will wave goodbye and you will pull away from the house. The next parent will pull up likewise.

Come on in!

We have an Open Door Policy so you are free to come to the school to drop off or pick up our child. But please do so occasionally, and arrive later and park in the driveway AFTER the carpool line is finished.

We are a small school so I am confident that we can work together on this!

Thank you