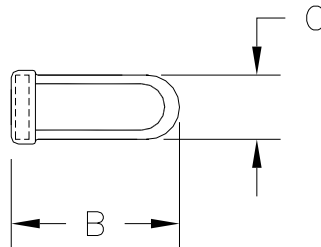
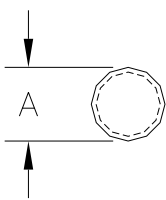


FISH BODY IMPLANT

Series F1000



Technical Specifications

Transmitter type:	Crystal controlled 2-stage
Calibration tolerance:	± 2.5kHz
Frequency stability:	± 2.5kHz, -20°C to 40°C
Pulse rate and width:	Typical on time 20ms, off time 1100ms (controlled by astable circuit)
Pulse rate variation:	5%/volt, ± 20% for temperatures -20°C to +40°C
Battery:	Silver Oxide
Activation:	By removing magnet
Encapsulation:	Electrical resin, water-proof, specific gravity: 1.12

MODEL	BATTERY	BATTERY CAPACITY (days)			DIMENSIONS (mm)			WEIGHT (grams)	PRICE GROUP
		30 ppm*	40 ppm	55 ppm	A	B	C		
F1010	379	34	20	14	8	20	9	1.4	B
F1020	377	58	34	25	9	21	9	1.7	B
F1030	392	94	55	40	10	22	9	2.1	B
F1040	393	158	93	68	10	23	9	2.5	B

* 15 ms pulse width

Warranty life is 50% of battery capacity.