

IN-PERSON FAMILY SUPPORT GROUP



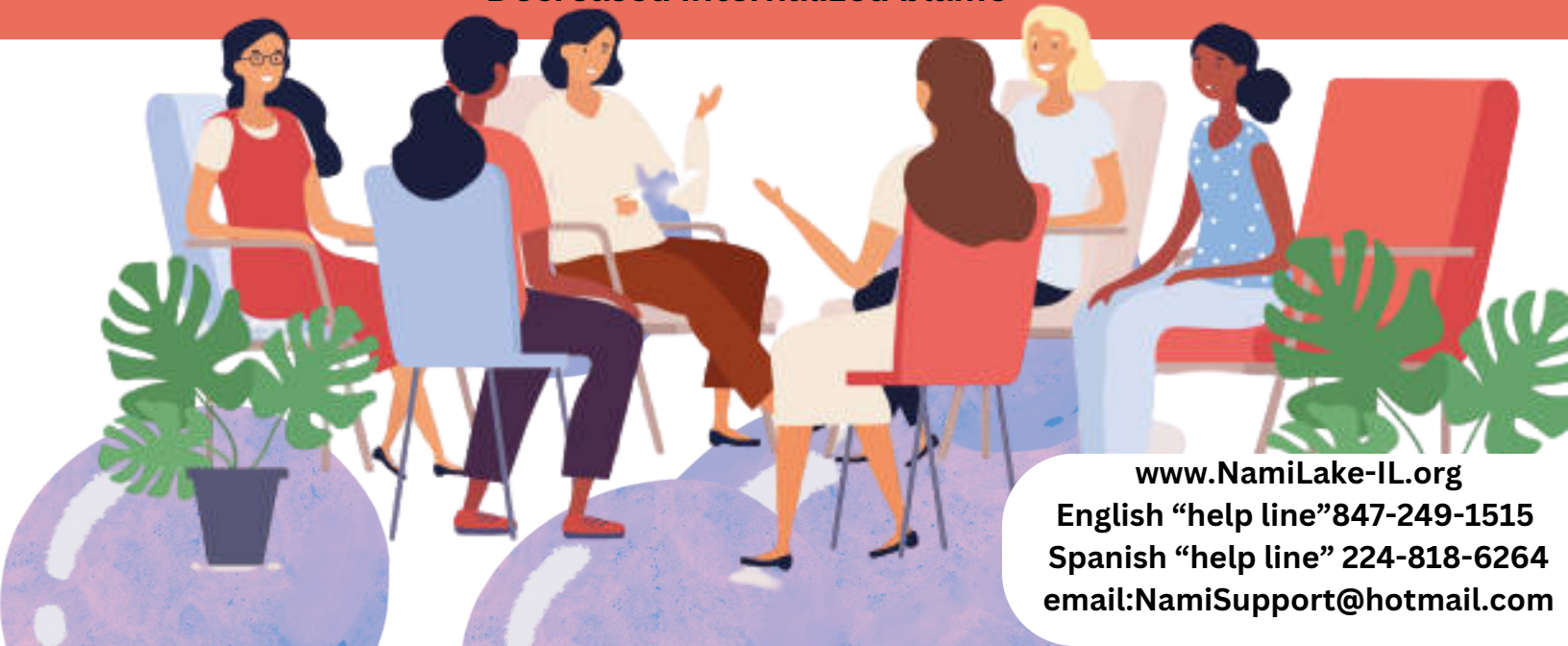
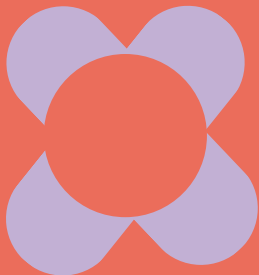
**Where: Warren-Newport Public Library
224 O'Plaine Rd, Gurnee**

When: On the 2nd Tuesday of the month

**2023 Groups:
August 8th
September 12th
October 10th
November 14th
and
December 12th**

NAMI FAMILY SUPPORT GROUPS

- **Designed for adults 18 and over caring for those with mental health conditions**
- **No cost to participants**
- **Confidential**
- **Emotional connection of people who have “been there”**
- **Decreased internalized blame**



www.NamiLake-IL.org
English “help line” 847-249-1515
Spanish “help line” 224-818-6264
email: NamiSupport@hotmail.com