



# Ridgecrest, CA Industry Forum

25 February 2020

Overall Classification: **UNCLASSIFIED//FOR OFFICIAL USE ONLY**

# Agenda



0900

- Welcome
- Navy & Ridgecrest Panel & Staff introductions
- City of Ridgecrest Capabilities Brief
- Navy Earthquake MILCON Program Update
- Questions & Answers Panel
- Lunch
- Match Making

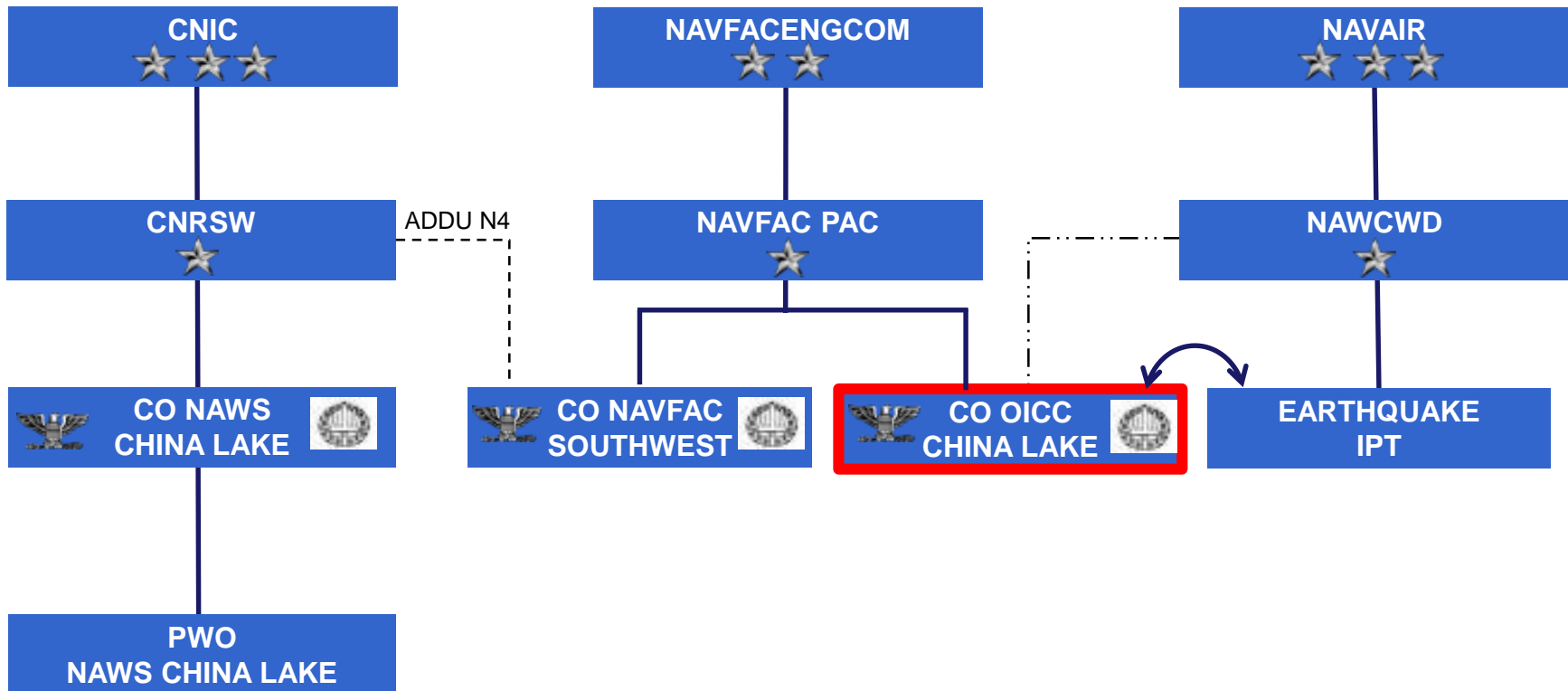
1600

# Navy Earthquake MILCON Program Update

25 February 2020

Overall Classification: **UNCLASSIFIED//FOR OFFICIAL USE ONLY**

# OICC China Lake Establishment Alignment



# Earthquake Recovery MILCON

## Orientation & Projects Program Cost



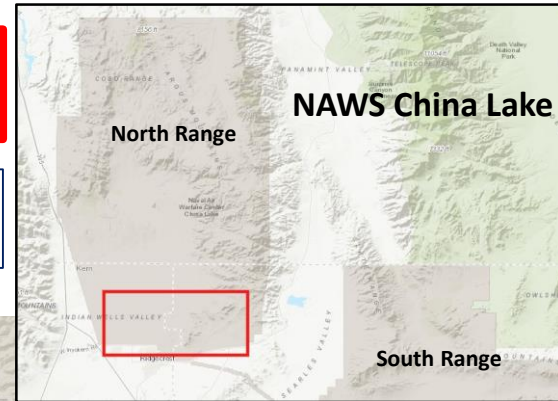
### South Airfield: \$948M

- P1900 Hangar 3 Replacement: \$515M
- P1901 Integration Lab: \$150M
- P1902 Air Ops and ATC Tower: \$71M (CNIC)
- P1907 Aircraft Parking Apron for Hangar 2: \$51M
- P1908 Advanced Weapons Hangar: \$117M
- P1914 Aircraft Rescue & Fire Fighting Sta: \$45M(CNIC)

**18 projects @ \$2.3B funded in FY20 Appropriations Bill**

### Range Control Complex: \$192M

- P1911 Range Control Complex: \$192M



### Main Magazine Area: \$139M

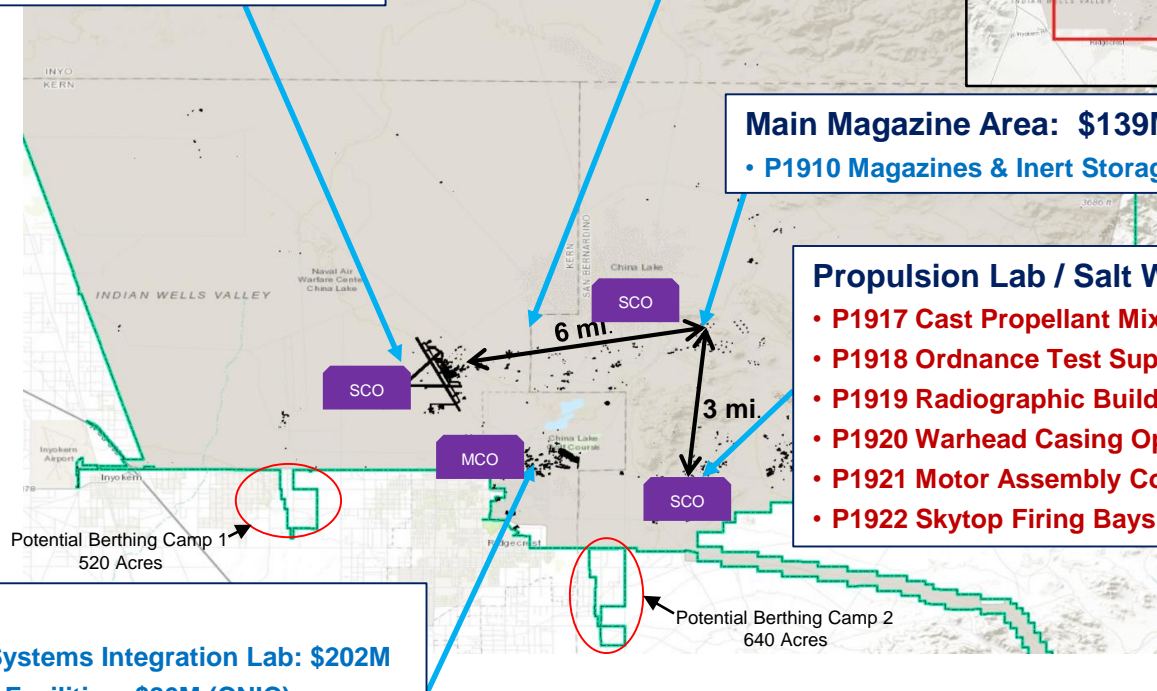
- P1910 Magazines & Inert Storage Facility: \$139M (CNIC)

### Propulsion Lab / Salt Wells: \$396M

- P1917 Cast Propellant Mix Building: \$56M
- P1918 Ordnance Test Supt & Tech Svcs Lab: \$88M
- P1919 Radiographic Building: \$53M
- P1920 Warhead Casing Operations: \$23M
- P1921 Motor Assembly Compound: \$52M
- P1922 Skytop Firing Bays: \$124M

### Mainside: \$604M

- P1903 Michelson Mission Systems Integration Lab: \$202M
- P1916 Community Support Facilities: \$86M (CNIC)
- P1904 Michelson Lab Complex: \$282M
- P1924 Academic Training Building: \$35M



**Key:**  
**FY20 PLANNED AWARDS**  
**FY21 PLANNED AWARDS**

MCO = Main Construction Office

SCO = Satellite Construction Office

# China Lake MILCON Acquisition Plan



## Design & Construction Strategy

- 18 projects in 13 Design Build packages
  - 6 projects packaged for a single task order award using Global Contingency Construction Contract (GCCC)
  - 10 individual task order awards using Regional Multiple Awards Construction Contracts (MACC)
  - 2 individual task order awards using Regional Small Business Multiple Awards Contracts
- Small Business subcontracting goals included in contracts
- Designs will include stringent building codes for earthquake seismic activity

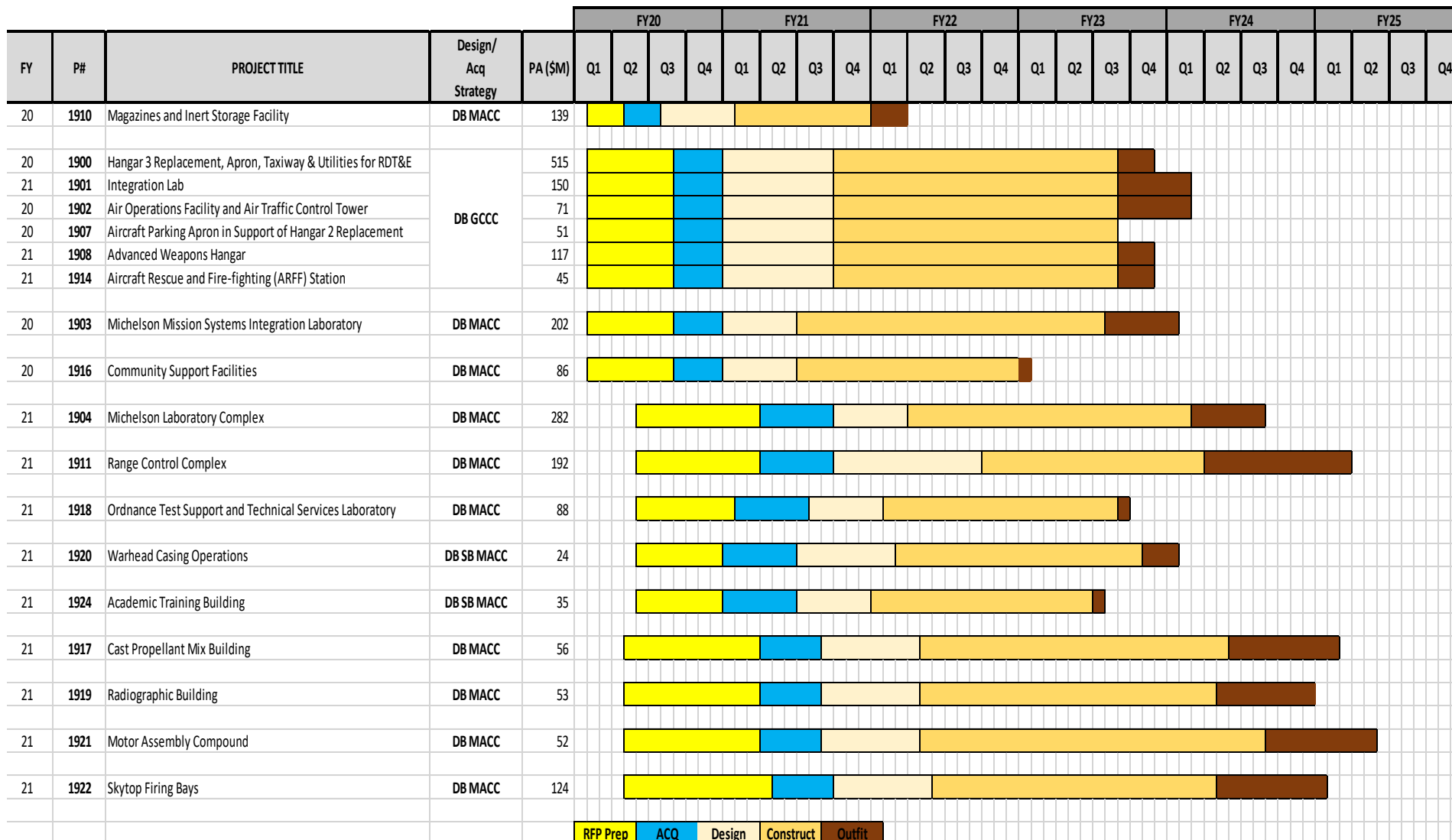
## Major Milestones

Category	Action	Timeframe
Preparation Milestones	Industry Forum, San Diego, CA	1-Aug-19
	Requirements Validation & Acquisition Plan Review w/NAWCWD & CNIC	Sep-20
	Industry Forum, San Diego, CA	18-Dec-19
	Small Business Centric Industry Forum with the City of Ridgecrest (Ridgecrest, CA)	25-Feb-20
	GCCC & MACC Contractors Construction Site Windsheild Tours	26-Feb-20
	Award first Earthquake recovery MACC Task Order (P1910) <b>\$139M</b>	Apr-20
	Award single GCCC task order (P1900, P1901, P1902, P1907, P1908, P1914) <b>\$948M</b>	Sep-20
	Award two MACC task orders (P1903, P1916) <b>\$288M</b>	Sep-20
FY21	Award Unrestricted MACC with \$2.5B Overall Capacity	Oct/Nov-20
Project Milestones	Award nine MACC task orders (P1904, P1911, P1917, P1918, P1919, P1920, P1921, P1922, P1924) <b>\$905M</b>	Mar-Jun 21

Milestone Complete

# China Lake MILCON Execution Timeline\*\*

(\*\*Design, construction and outfitting targeted timelines)



# NAWS CL Mass Vetting Process for DBIDS Cards



**ALL** personnel will require a **NAWSCL issued DBIDS** (Facilitate Restricted Area Access)

## **Scenario 1: Employees DO NOT possess DBIDS cards**

- Employees complete SECNAV 5512
  - Used for vetting purposes (criminal history, etc.)
- Employees makes a copy of completed SECNAV 5512 and takes the following action:
  - Provides the original completed SECNAV 5512 to the employer
  - Provides a copy of the completed SECNAV 5512 to nearest Navy Region SW Pass & ID office
    - Information entered into DBIDS, photo taken for enrollment/registration, etc
- Employer submits employees' completed SECNAV 5512 to designated Government Sponsor/POC assigned to NAWSCSCL (i.e. COR, ET, etc.)
- Government Sponsor/POC provides batch of completed SECNAV 5512 to NAWSCSCL Pass & ID office
- Two options to retrieve once DBIDS cards are ready:
  - Government Sponsor/POC picks up batch of completed SECNAV 5512 from NAWSCSCL Pass & ID office and provides to employer to disseminate to employees
  - Employee picks up DBIDS card from NAWSCSCL Pass & ID office

## **Scenario 2: Employees possess a DBIDS cards, but it was NOT issued by NAWSCSCL Pass & ID Office**

- Employees complete SECNAV 5512
  - Used for vetting purposes (criminal history, etc.)
- Employees provides the original completed SECNAV 5512 to the employer
- Employer submits employees' completed SECNAV 5512 to designated Government Sponsor/POC assigned to NAWSCSCL (i.e. COR, ET, etc.)
- Government Sponsor/POC provides batch of completed SECNAV 5512 to NAWSCSCL Pass & ID office
- Two options to retrieve once DBIDS cards are ready:
  - Government Sponsor/POC picks up batch of completed SECNAV 5512 from NAWSCSCL Pass & ID office and provides to employer to disseminate to employees
  - Employee picks up DBIDS card from NAWSCSCL Pass & ID office

# 26 Feb MILCON Site Windshield Tour



- Muster at Kerr McGee Center parking lot - 0830
- Must be on the RSVP list
- Bring Photo ID to get on bus
- NO PICTURES!!
- Tour:
  - Electrical and Water Tie-in points for South Airfield
  - South Airfield
    - P1900 Hangar 3 Replacement
    - P1901 Integration Lab
    - P1902 Air Ops and ATC Tower
    - P1907 Aircraft Parking Apron for Hangar 2
    - P1908 Advanced Weapons Hangar
    - P1914 Aircraft Rescue & Fire Fighting Station
  - Range Control Complex (P1911 Range Control Complex)
  - Main Magazine Area (P1910 Magazines & Inert Storage Facility)
  - Propulsion Lab
    - P1917 Cast Propellant Mix Building
    - P1918 Ordnance Test Support & Technical Services Lab
    - P1919 Radiographic Building
    - P1920 Warhead Casing Operations
    - P1921 Motor Assembly Compound
    - P1922 Skytop Firing Bays
  - Mainsite
    - P1903 Michelson Mission Systems Integration Lab
    - P1916 Community Support Facilities
    - P1904 Michelson Lab Complex
    - P1924 Academic Training Building
- Return to Kerr McGee Center parking lot - 1100

# Thank You!!

- **What are your:**
  - **Questions?**
  - **Issues/Concerns?**
  - **Thoughts?**
    - Housing
    - Logistics
    - Building Commissioning
    - Safety
    - Electronic Construction Management System (eCMS)
    - Contractor Program Managers onsite
    - Pitfalls to avoid
    - Best practices to incorporate

## **Backup Slides**

# Project Site Visit Requirements during RFP Process



- Site visit will be scheduled approximately 2-3 weeks after issuance of the RFP.
- DBIDS card with required Controlled Access Area annotated will be required to access NAWS China Lake.
  - DBIDS card from another base will not give access to NAWS China Lake
    - NAWS China Lake has several Controlled Access Areas that require access privileges added to contractor DBIDS badges.
  - Request forms must be submitted 8 business days prior to site visit
- The RFP will designate a government point of contact to receive and submit the completed forms from the prime contractor's POC
- Contractors will meet in a designated conference room for a brief and then convoy to the project site
  - No cameras are allowed but a government person will be available to take requested photos; cell phones may be required to be turned off in some areas

## **Document Requirements for DBIDS and Controlled Access Areas:**

- Filled out SECNAV 5512 Form
- Filled out NAWS China Lake Badge Request Form
  - Check X next to the controlled access area required for the project site visit. The RFP will annotate which area will be required for the site visit.
- If access to CLPL area is required, each individual must review two CLPL access and security training documents and sign two documents acknowledging the training.
- Must bring two forms of ID (State Driver License or ID card, Military ID, voter's registration, Social Security Number card, Birth Certificate issued by State, county, territory, or Department of State, US Passport, Permanent Resident card, and/or DBIDs ID from another military installation)
- Non US-Born citizens must be prepared to submit either an original passport or original naturalization paper at Pass & ID to pick up their badge.



# DoD Access Process Earthquake Related Activity



**ALL** personnel will require a **NAWSCL issued DBIDS** (Facilitate Restricted Area Access)

Employee

Receive partially completed SECNAV 5512 from employer  
Complete SECNAV 5512  
Provide completed SECNAV 5512 to Employer  
Get enrolled in DBIDS system  
Pick up completed DBIDS as directed

Employer

Provide partially completed SECNAV 5512 to employee  
Collect completed SECNAV 5512 from employee  
Provide completed SECNAV 5512 to Prime

Prime

Provide partially completed SECNAV 5512s to employer  
Collect **ALL** completed SECNAV 5512s from employer  
Provide **ALL** completed SECNAV 5512s to COR

COR

Collect **ALL** completed SECNAV 5512s from Prime  
Provide **ALL** completed SECNAV 5512s to NAWS Security  
Complete NAWS 5530 indicating Area Access  
Requirements and attach spreadsheet listing employees  
needing access  
Receive from NAWS Security completed DBIDS for  
distribution

NAWS Security

Complete vetting requirements  
Produce DBIDS cards with Area Access Indicators  
Provide DBIDS to COR for distribution

# MACC Contractors Overview



FY	Project #	Project Title (All projects anticipated design-build)	Planned Contract Vehicle	MACC Contractors
20	1910	Magazines and Inert Storage Facility	86 H. HORIZ	ORION CONSTRUCTION CORPORATION; BILBRO CONSTRUCTION COMPANY; REYES CONSTRUCTION INC; M A MORTENSON CO; BALDI BROS INC; GRANITE CONSTRUCTION COMPANY; HAL HAYES CONSTRUCTION INC
20	1900	Hangar 3 Replacement, Apron, Taxiway & Utilities for RDT&E	GCCC	AECOM; APTIM; CH2M HILL; ECC; FLUOR; PERINI
21	1901	Integration Lab		
20	1902	Air Operations Facility and Air Traffic Control Tower		
20	1907	Aircraft Parking Apron in Support of Hangar 2 Replacement		
21	1908	Advanced Weapons Hangar		
21	1914	Aircraft Rescue and Fire-fighting (ARFF) Station		
20	1903	Michelson Mission Systems Integration Laboratory	89 UR C&I	M.A. MORTENSON COMPANY DBA; RQ CONSTRUCTION LLC; R.A. BURCH CONSTRUCTION CO INC; HARPER CONSTRUCTION CO INC; SUNDT CONSTRUCTION INC; SOLTEK PACIFIC CONSTRUCTION CO; BETHEL-WEBCOR PACIFIC JV; WHITING-TURNER CONTRACTING CO
20	1916	Community Support Facilities	89 UR C&I	M.A. MORTENSON COMPANY DBA; RQ CONSTRUCTION LLC; R.A. BURCH CONSTRUCTION CO INC; HARPER CONSTRUCTION CO INC; SUNDT CONSTRUCTION INC; SOLTEK PACIFIC CONSTRUCTION CO; BETHEL-WEBCOR PACIFIC JV; WHITING-TURNER CONTRACTING CO
20	RM19-1867	Michelson Lab Repairs, Wings 2-5	81 UR C&I	HARPER CONSTRUCTION CO INC; HENSEL PHELPS CONSTRUCTION CO; M.A. MORTENSON COMPANY DBA; RQ CONSTRUCTION LLC; R.A. BURCH CONSTRUCTION CO INC; SOLTEK PACIFIC CONSTRUCTION CO; STRAUB CONSTRUCTION, INC.
21	RM19-1867	Michelson Lab Repairs, Wings 6-7	105 UR C&I	New MACC
21	1904	Michelson Laboratory Complex	105 UR C&I	New MACC
21	1911	Range Control Complex	105 UR C&I	New MACC
21	1918	Ordnance Test Support and Technical Services Laboratory	105 UR C&I	New MACC
21	1920	Warhead Casing Operations	82 SB C&I	R.A. BURCH CONSTRUCTION CO INC; BRISTOL DESIGN BUILD SERVICES, LLC; I E PACIFIC INC; BARNHART-REESE CONSTRUCTION INC; BILBRO CONSTRUCTION COMPANY
21	1924	Academic Training Building	82 SB C&I	R.A. BURCH CONSTRUCTION CO INC; BRISTOL DESIGN BUILD SERVICES, LLC; I E PACIFIC INC; BARNHART-REESE CONSTRUCTION INC; BILBRO CONSTRUCTION COMPANY
21	1917	Cast Propellant Mix Building	105 UR C&I	New MACC
21	1919	Radiographic Building	105 UR C&I	New MACC
21	1921	Motor Assembly Compound	105 UR C&I	New MACC
21	1922	Skytop Firing Bays	105 UR C&I	New MACC